



Holidays



HAPPY HAUNTING

Call Graham
around

Christmas in Great Britain



Every year there is a big Christmas tree in the centre of London, in...

Trafalgar Square

Christmas in Great Britain

A very big Christmas tree in the centre of London is a present from ...
to the people of Great Britain.

the people of Norway



Christmas in Great Britain

People put their present
under the tree on ...

Christmas Eve





In Britain, Santa Claus enters houses

- by climbing through the window
- by coming down the chimney
- through the front door.
- through the back entrance



Christmas in Great Britain

Correspondence between the place and the things:

On the Christmas tree Toys

Little colored lights

Under the Christmas tree Colored balls

Stockings

Near beds Presents



In the old Christmas Song, there are 12 days of Christmas. The first day of Christmas is

- 25th December
- 15th December
- 6th December



The background features several black musical notes and staves scattered across the white space. A central red box contains the title and a list of options. The title is in yellow text, and the list items are in white text.

A 'carol' is

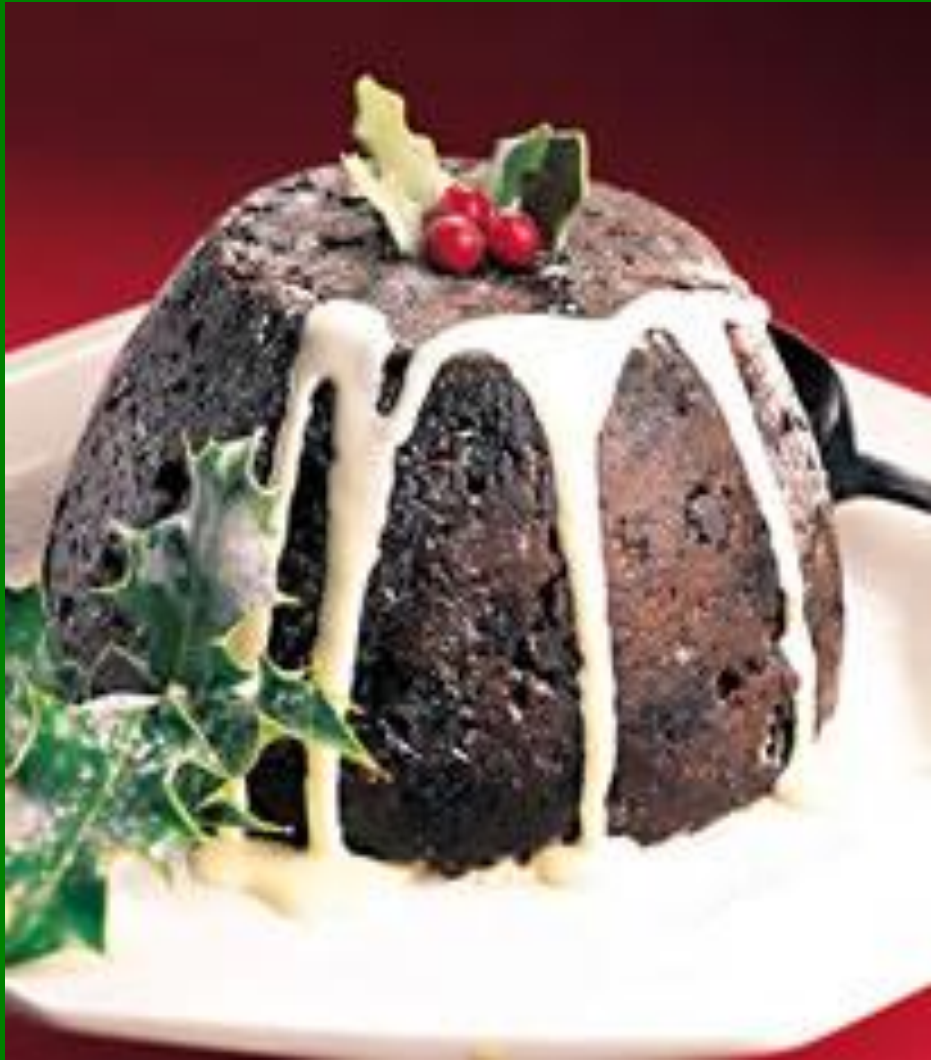
- a pie traditionally eaten on Christmas day
- a religious Christmas song
- a Christmas party with dancing

Which of these would you NOT see on top of a British Christmas tree?

- a star
- a fairy
- Santa Claus



A traditional Christmas pudding is made



- a week before Christmas
- on Christmas morning
- up to 3 months before Christmas

dinner British families usually have

- Beef
- Turkey
- Chicken
- Apples
- Soup
- Salami



Christmas in Great Britain

The correct order of events:

- For Christmas lunch people eat turkey, potatoes and vegetables.
- Then they have tea
- Then they have the Christmas pudding



The correct chronological order is

- New year
- Mother's Day
- Easter
- Fool's Day



Correspondence between English holidays and their dates.



Christmas

in April

Easter

on the 31st of October

New Year

on the 25th of December

Mother's Day

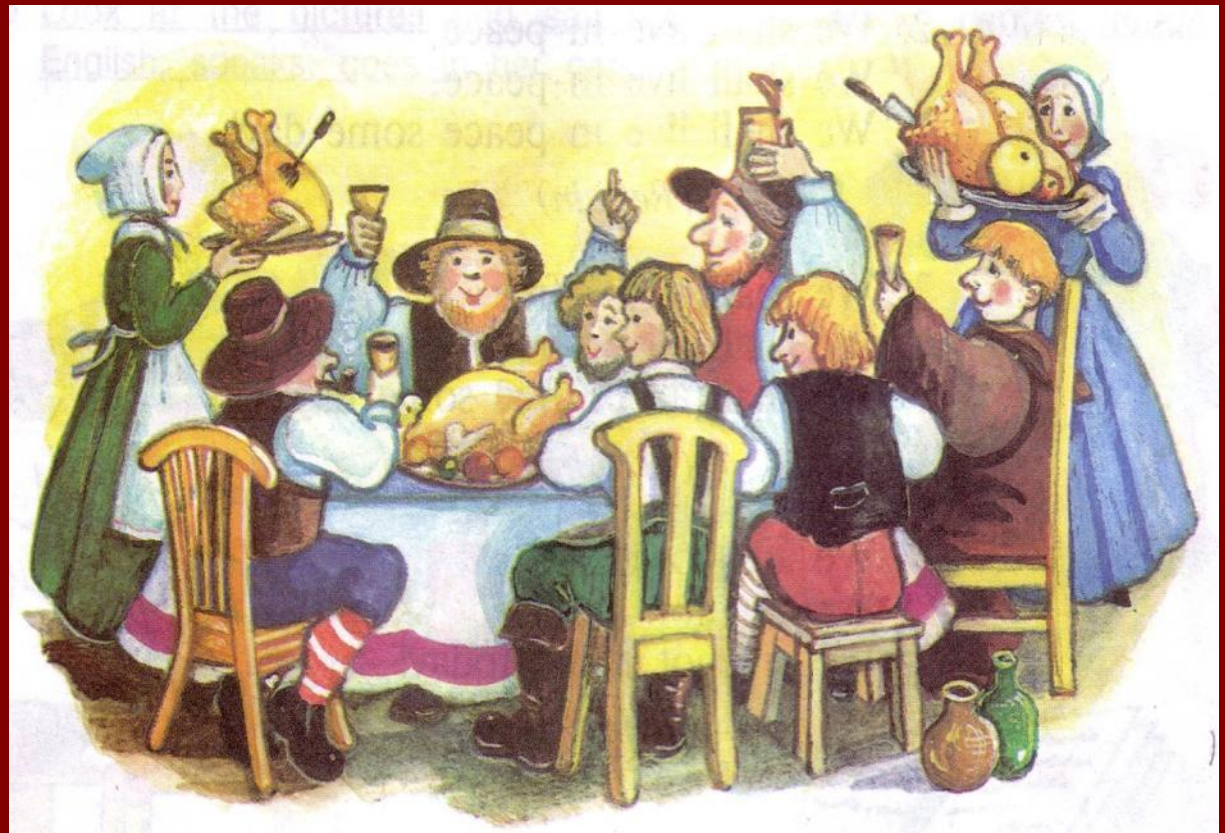
*on the 31st of
December/
1st of January*

Halloween

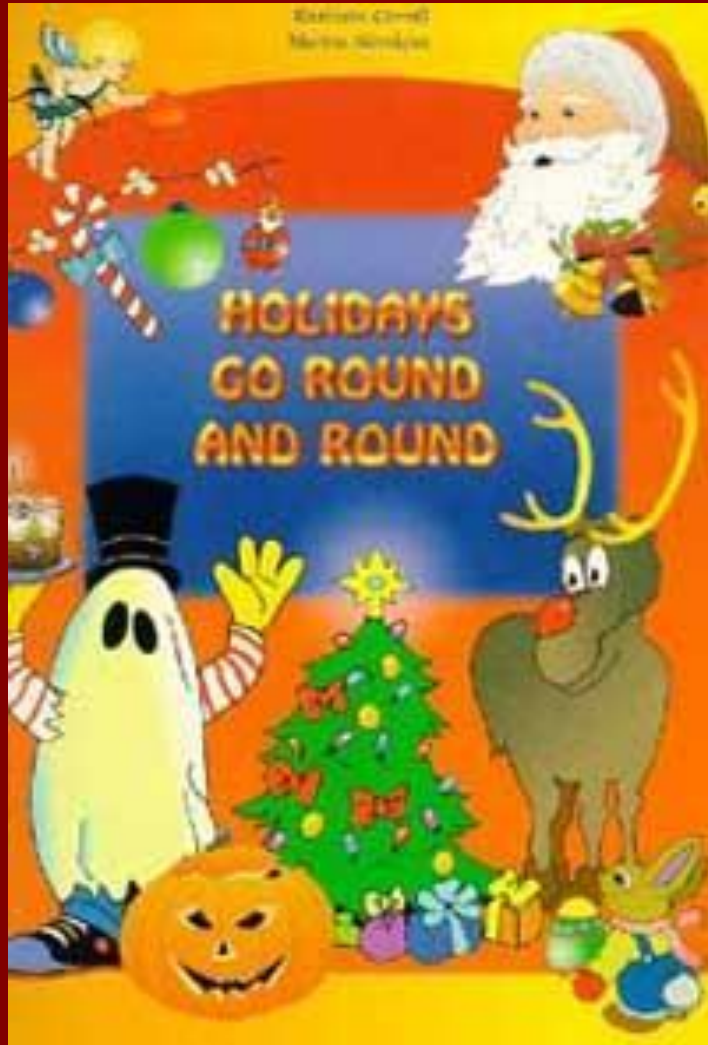
on the 26th of March

11. The traditional food of thanksgiving Day is

- turkey-
- beef -
- pork -



5. People usually ... for the New Year.
+ make promises



6. People call St.
Valentine the ...
+Saint of Love

3. Thanksgiving Day is an ... holiday

- a) British -
- b) French -
- c) American +
- d) Indian -



(COURTESY BOSTON PUBLIC LIBRARY)

The English year

Children get chocolate
Ester eggs or rabbits
on

...

Easter Sunday





The English year

**On Halloween
people say:**

- **Trick or treat**
- **April Fool!**
- **Happy New Year**
- **Merry Christmas**



If you solve the rebuses you'll find what presents Santa Claus has in his bag

a)



b)



c)



d)

