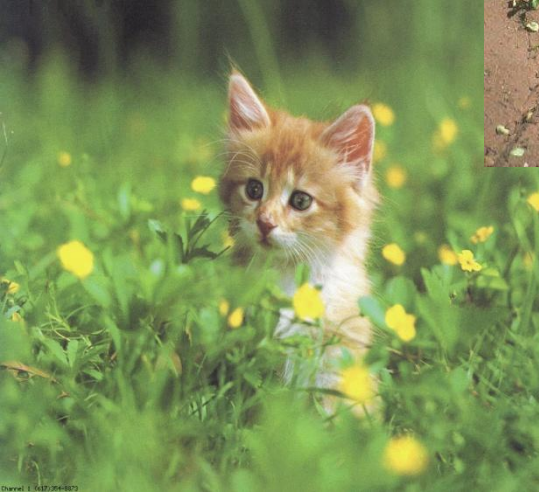
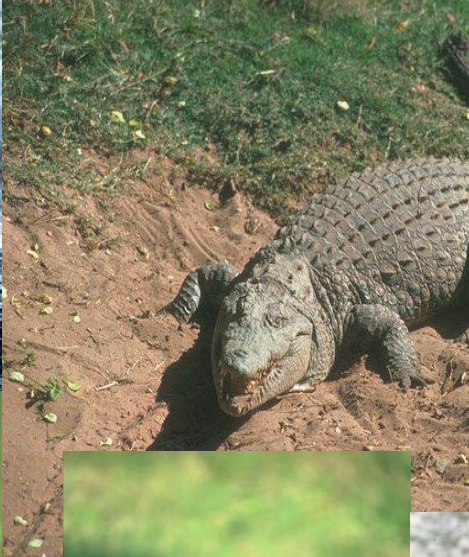


DOTTY THE DOG AND HIS FRIENDS.





**TRY TO REMEMBER THESE WORDS
AND EXPRESSIONS:**

ANY – КАКОЙ-НИБУДЬ

FIND – НАЙТИ

**TAKE ME WITH YOU – ВОЗЬМИ МЕНЯ С
СОБОЙ**

WANT – ХОТЕТЬ

COME WITH ME – ПОЙДЕМ СО МНОЙ

EMPTY – ПУСТОЙ



**LISTEN TO THE STORY
AND ANSWER WHO IT IS
ABOUT.**



SAY WHO (WHAT):

- is black and nice
- goes to the forest to find friends
- comes to a house in the forest
- is empty and big
- wants to live in the house

GET READY TO ANSWER THE QUESTIONS AFTER IT.



ANSWER THE QUESTIONS:

1. Who is Dotty?
2. Is he nice?
3. Why does he go to the forest?
4. Who does he see in the forest?
5. How many friends has Dotty got?
6. Where do Dotty and his friends?
7. Is the house little?
8. Do they live in the house now?

FILL IN THE BLANKS WITH THE CORRECT ANSWER USING WORDS FROM THE BOX:

forest, fox, bear, little, empty, friends

1. Dotty the Dog, Polly the Cat, Tommy the Fox and Willy the Hare see a _____.
2. The ___ says, “Hello, take me with you”.
3. Now the _____ live in that house.
4. One day he goes to the _____ to find some friends.
5. The house is _____.
6. Dotty is a _____ black dog.



WHOSE WORDS ARE THESE?

Choose the correct answer from the list of characters:

Dotty the dog	Polly the cat	Tommy the fox	Willy the Hare	Billy the Bear
------------------	------------------	------------------	-------------------	-------------------

1. Who are you?
2. Hello. Take me with you. I want to be your friend.
3. What a nice house!
4. OK. Lets live in this house.



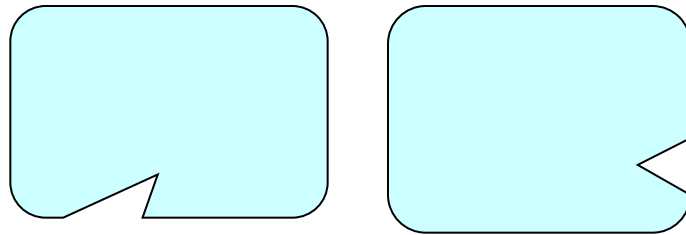
CHOOSE THE RIGHT SENTENCES.

- ❑ Dotty is a big black dog.
- ❑ He is very nice.
- ❑ He hasn't got any friends.
- ❑ One day Dotty goes to the forest to see his friends.
- ❑ In the forest he sees Polly the Cat, Tommy the Fox, Willy the Hare and Jenny the Giraffe.
- ❑ Dotty has got four friends.
- ❑ The house is near the river.
- ❑ Now they don't live in the house.



MAKE UP SHORT DIALOGUES BETWEEN:

- Dotty the Dog and Polly the Cat



RETELL THE STORY, DESCRIBING THE PICTURES.

