

*This – that*

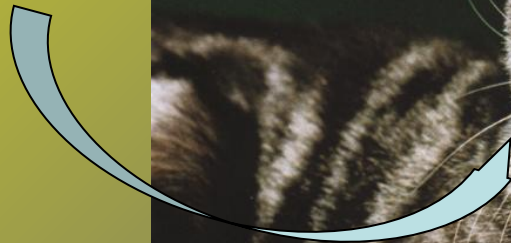
**Pat**



You like that cat



I like this  
cat



**Pit**



You like Pat

**Pat**



**That**

I like Pit



**This**

**Pit**



**Bat**



**Bit**

I like this dog  
You like that  
dog

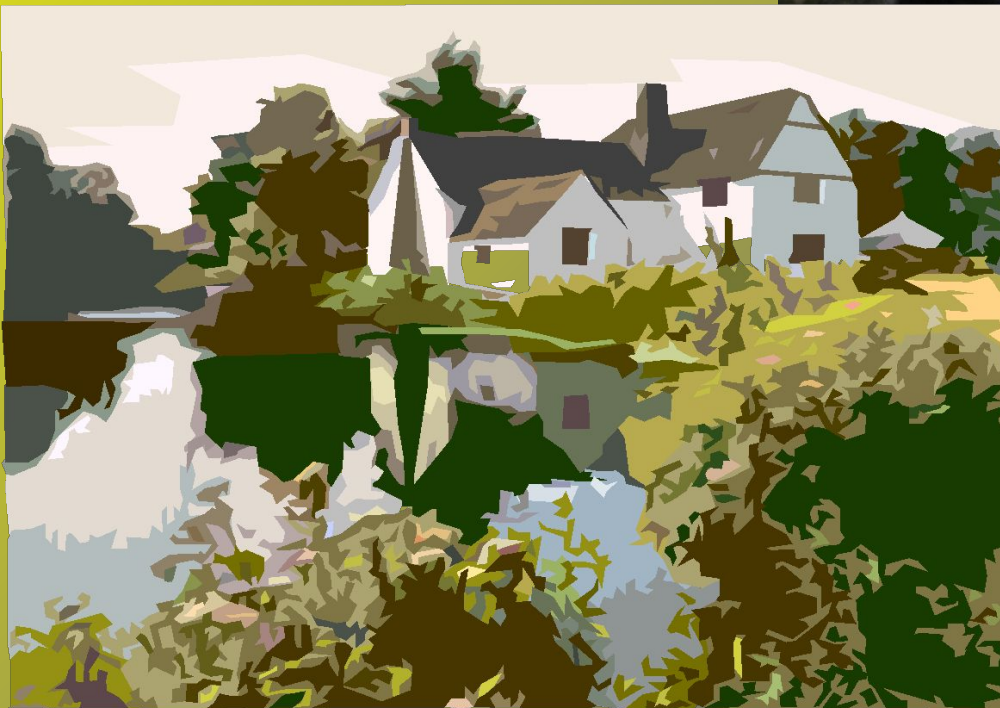


I like Bit

You like Bat



That is  
a  
mouse



This is a house



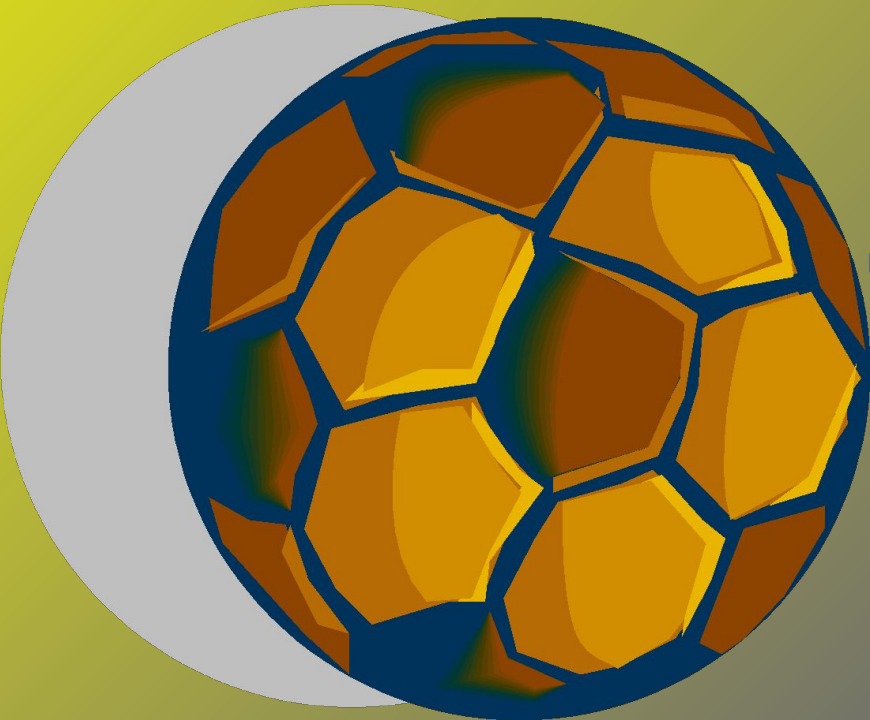
That is a truck

This is a duck





That is a doll



This is a ball



That is a  
frog



This is a dog

Look

at

these





ethos

Look

at



se [are](#)

*chicks*



Those are



**crows**

These are chicks

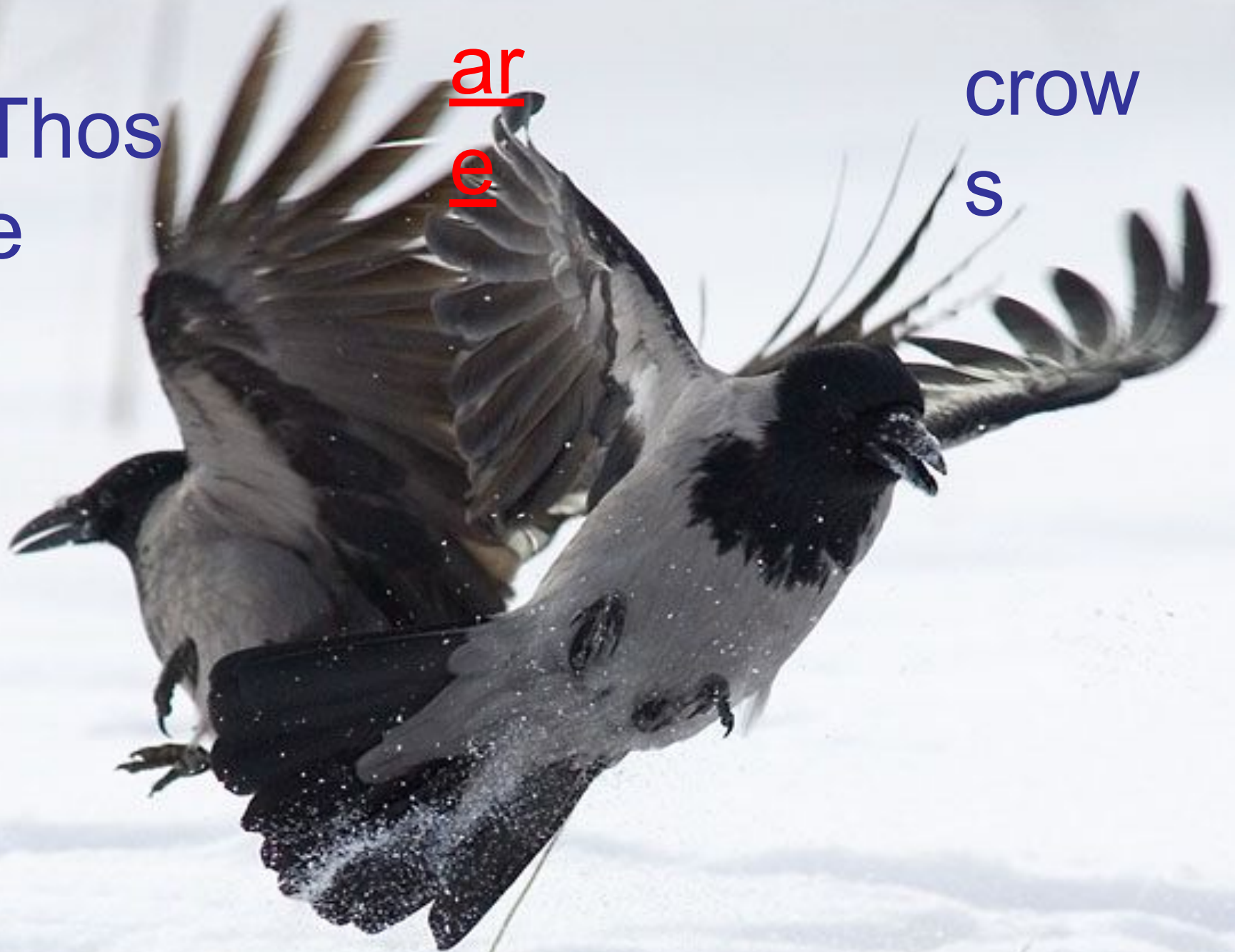




Thos  
e

ar  
e

crow  
s



I

like



thes

e

HUNTING DECOYS



thos  
e

You like