A high-speed train, likely a Shinkansen, is shown in motion on a track. The train is white with a prominent red stripe running along its side and a blue stripe near the bottom. The front of the train is aerodynamic with a large black windshield. The background is blurred, suggesting speed. The sky is overcast.

Completed: Nasyrov Marat,  
a student of class 11 A  
Leader: Shamshurina Tatiana, the teacher of the  
highest category

Agryz, 2012

Agryz  
transport on the

tion by rail  
movement of trains and  
the residents of Agryz.  
onmental situation





# Introduction



Content

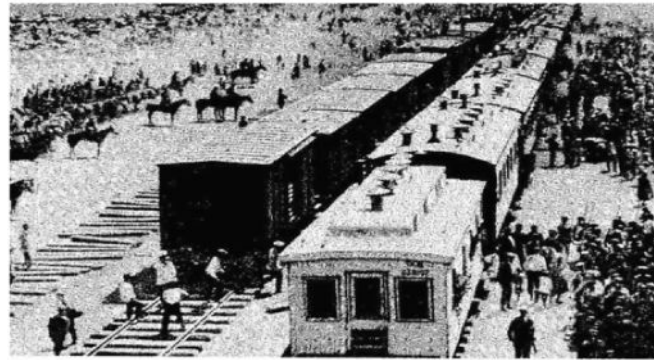
# The aim of my project

To study the influence of railway transport on the environment in Agryz.

To explore the problems of the protection of environment and try to find the ways of reducing the negative influence of railway transport.



# The history of the station Agryz





The pollution of the environment is a negative influence

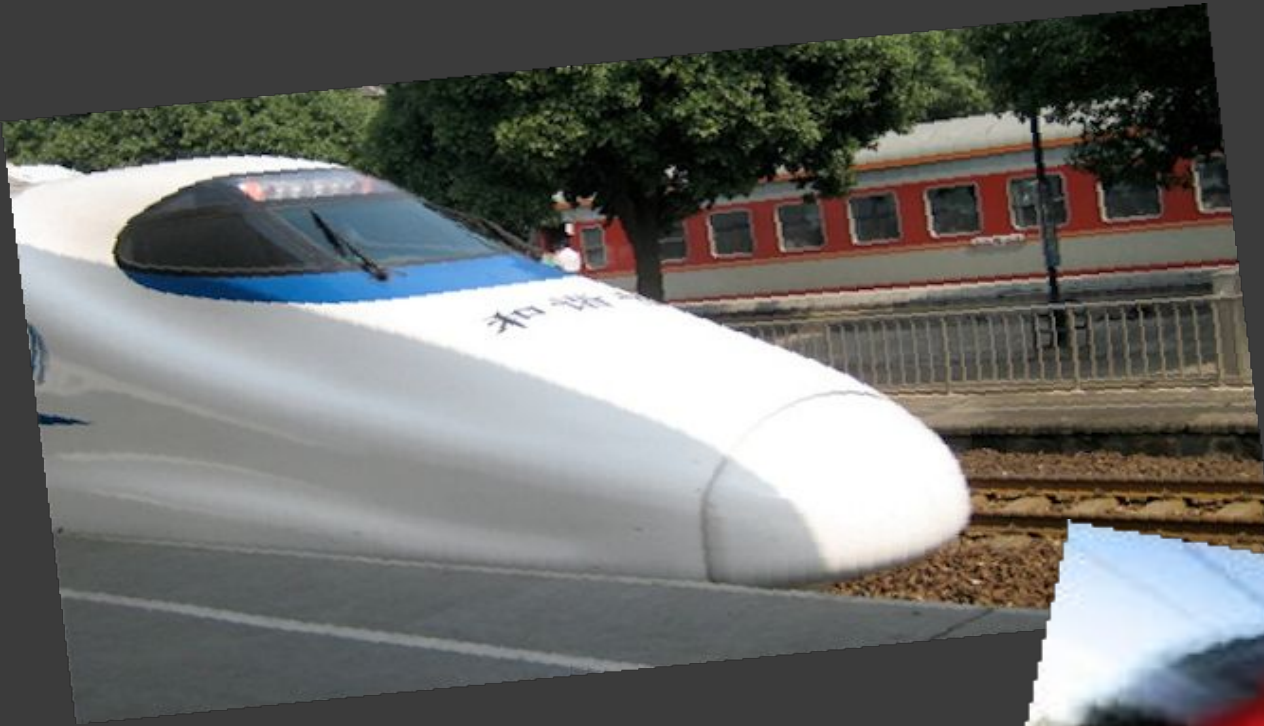


# The railway pollutes air



Content

# Noise and vibration during movement of trains and their impact on the health of the residents of Agryz.



Content



# Ways to improve the environmental situation



Content

Output:

The railways has positive and negative influence. We must take care of our planet



*THE END*