

A detailed illustration of a parchment scroll. The scroll is unrolled, showing its texture and the way it is tied at the ends. In the bottom-left corner, there is a red wax seal with a braided cord, featuring a monogram. The background is a solid green color.

INCREDIBLE BRITAIN

WHAT IS HALLOWEEN?

a holiday of people
in love

a holiday of the
witches and ghosts

Carlson's birthday

When do they celebrate Christmas in England?



March, 8



April, 1



January, 1



December, 25

Which city is a capital of Great Britain?



Paris



Washington

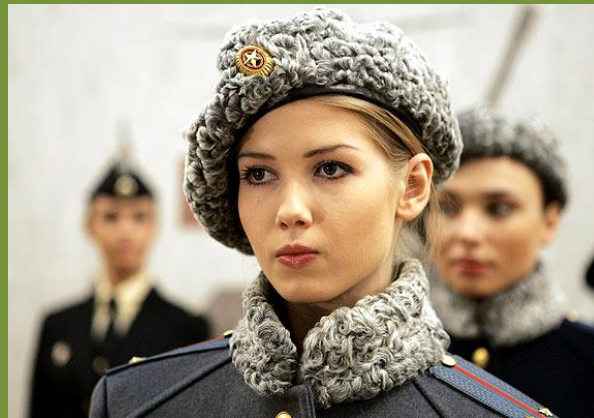


London

Who lives in Britain besides the Englishmen?



the French,
the Chinese



Russian



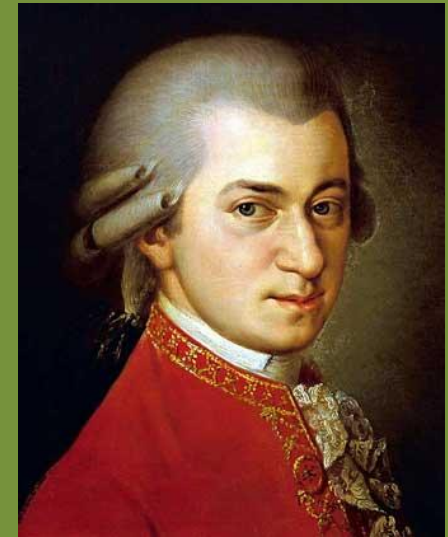
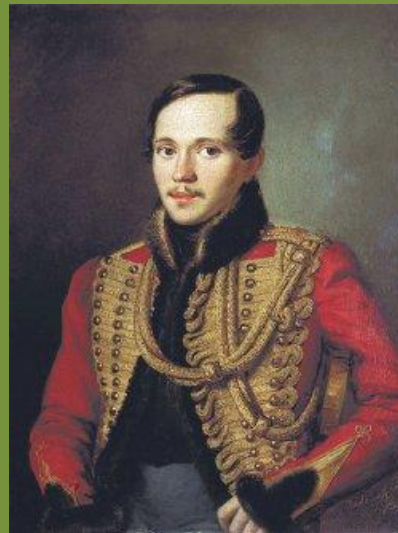
the Scots,
the Irish, the
Welsh

Who wrote «Romeo and Juliet»?



Shakespeare

Lermontov



Mozart

Who rules in Britain nowadays?



Prince Charles



Prince William



Elizabeth II

Which one of these sights is not in Great Britain?



**Westminster
Abby**



**The Tower
of London**



**Notre Dame
de Paris**

WHAT DO THE ENGLISHMEN TRADITIONALLY COOK FOR CHRISTMAS?



**a roasted
turkey**

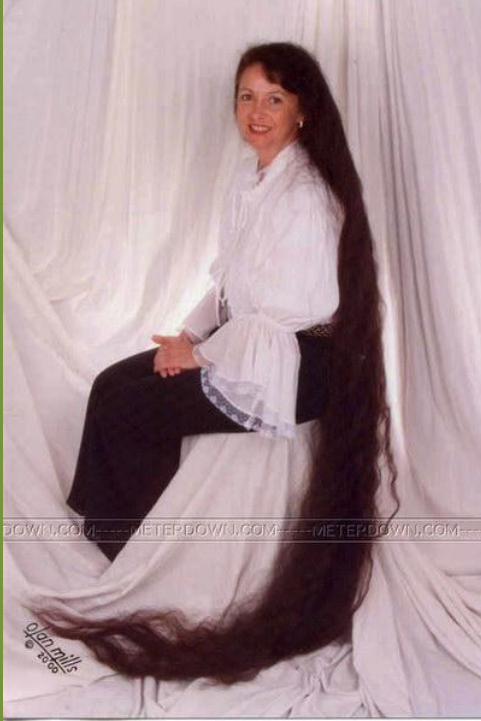


**a duck with
apples**



**a grilled
chicken**

What is the difference between the men in Scotland and the men from other countries?



they have long hair



they wear skirts

Byron is ...?

a singer

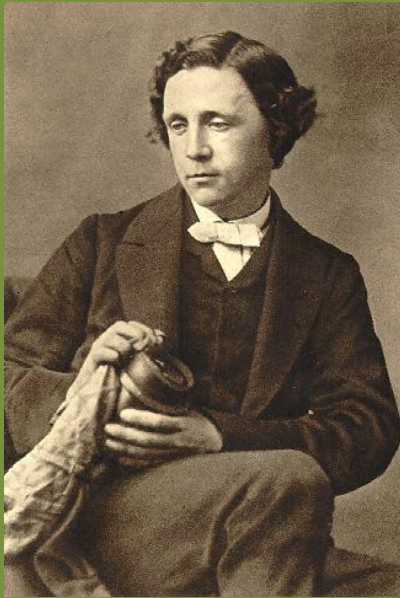


a producer

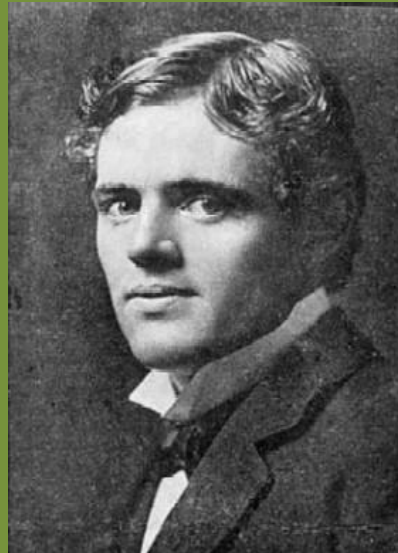
a poet

a model of computer

Who wrote «Alice in Wonderland»?



**Lewis
Carroll**



**Jack
London**



**Sydney
Sheldon**

Where is Sydney situated?



At what time do the Englishmen usually have their traditional «tea»?



What holiday do we celebrate on the fourteenth of February?



a day of people
in love



a day of liberty



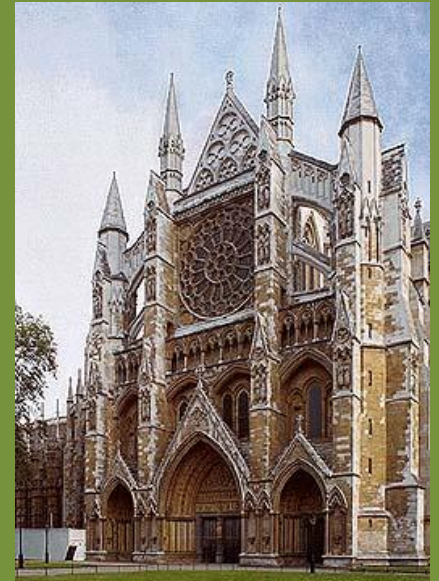
What place is an official Residence of the Queen?



**Buckingham
Palace**



**British
Museum**



**Westminster
Abby**

What river is the most important and the deepest in Britain?



Thames



Seine



Mississippi

WHAT IS THE SYMBOL OF ENGLAND?



red rose



shamrock



thistle



By Alex

Thank You

ImpImages.com