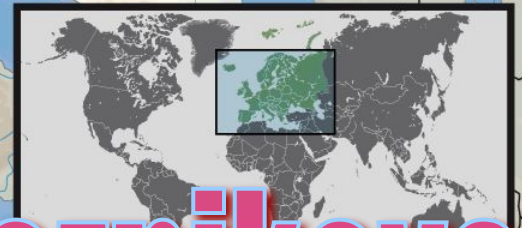


A map of Europe with a grid overlay. The United Kingdom and Northern Ireland are highlighted in red. The rest of Europe is colored in shades of orange and yellow. The text is overlaid on the map.

The United Kingdom Of Great Britain and Northern Ireland.



prepared by Alissa Meznikova



GEOGRAPHY OF GREAT BRITAIN



GEOGRAPHICAL INFORMATION

- **Location:** Western Europe, islands including the northern one-sixth of the island of Ireland between the North Atlantic Ocean and the North Sea, northwest of France
- **Geographic coordinates:** 54 00 N, 2 00 W
- **Map references:** Europe
- **Area:** total: 244,820 sq km
 - land: 241,590 sq km
 - water: 3,230 sq km
- **note:** includes Rockall and Shetland Islands
- **Area - comparative:** slightly smaller than Oregon
- **Land boundaries:** total: 360 km
- **border countries:** Ireland 360 km
- **Coastline:** 12,429 km
- **Maritime claims:** territorial sea: 12 nm
- **exclusive fishing zone:** 200 nm
- **Climate:** temperate; moderated by prevailing southwest winds over the North Atlantic Current; more than one-half of the days are overcast

GEOGRAPHICAL INFORMATION

- ▣ **Terrain:** mostly rugged hills and low mountains; level to rolling plains in east and southeast
- ▣ **Elevation extremes:** lowest point: The Fens -4 m
- ▣ highest point: Ben Nevis 1,343 m
- ▣ **Natural resources:** coal, petroleum, natural gas, iron ore, lead, zinc, gold, tin, limestone, salt, clay, chalk, gypsum, potash, silica sand, slate, arable land
- ▣ **Land use:** arable land: 23.46%
- ▣ **permanent crops:** 0.21%
- ▣ other: 76.33% (2001)
- ▣ **Natural hazards:** winter windstorms; floods

- ▣ **Geography - note:** lies near vital North Atlantic sea lanes; only 35 km from France and now linked by tunnel under the English Channel; because of heavily indented coastline, no location is more than 125 km from tidal waters
- ▣ **Population:** 60,441,457 (July 2005 est.)



Geographical position

The United Kingdom of Great Britain and Northern Ireland is situated on the British Isles. The British Isles consist of 2 large islands, **Great Britain and Ireland**, and about 5000 small islands.

The British Isles are separated from the European continent by **the North Sea and the English Channel**. The western coast of Great Britain is washed by **the Atlantic Ocean and the Irish Sea**.



CLIMATE

- ▣ temperate; moderated by prevailing southwest winds over the North Atlantic Current; more than one-half of the days are **overcast**



GREAT BRITAIN

- lies near vital North Atlantic sea lanes; only 35 km from France and now linked by tunnel under the English Channel; because of heavily indented coastline, no location is more than 125 km from tidal waters



GEOGRAPHICALLY, THE ISLAND IS MARKED BY LOW, ROLLING COUNTRYSIDE IN THE EAST AND SOUTH, WHILE HILLS AND MOUNTAINS PREDOMINATE IN THE WESTERN AND NORTHERN REGIONS. IT IS SURROUNDED BY OVER 1,000 SMALLER ISLANDS AND ISLETS.

Mountains

The north and west of England are mountainous, but mountains are not very high. **BEN NAVIS** in Scotland is the highest mountain (1343 m)



Rivers

There are a lot of rivers in the UK, but they are not very long.

- The **SEVERN** is the longest river.



The **THAMES** is the deepest and the most important one.



The UK consist of
4 countries:
England,
Scotland,
Wales
and
Northern Ireland.



ENGLAND



SCOTLAND



WALES



NORTHERN IRELAND



Flags



England



Scotland



The UK



Wales



Northern Ireland

Symbols



the symbol of England is the red rose



the symbol of Wales is the daffodil



the symbol of Scotland is the thistle



The symbol of Nothern Ireland is the shamrock



THE CAPITAL OF ENGLAND IS LONDON



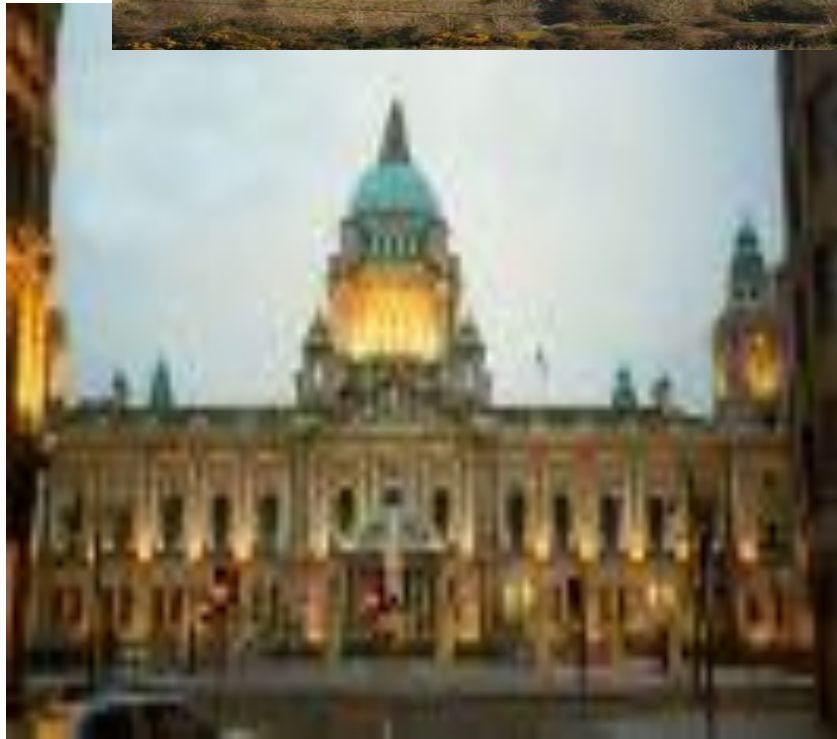
THE CAPITAL OF SCOTLAND IS EDINBURGH



THE CAPITAL OF WALES IS CARDIFF



THE CAPITAL OF NORTHERN IRELAND IS BELFAST

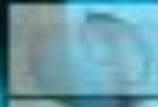
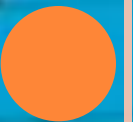


THE CAPITAL OF THE UK



The
Holloways

**SO THIS
IS
GREAT
BRITAIN?**



FUNKY SOUND

YES, THIS IS GREAT BRITAIN





The End