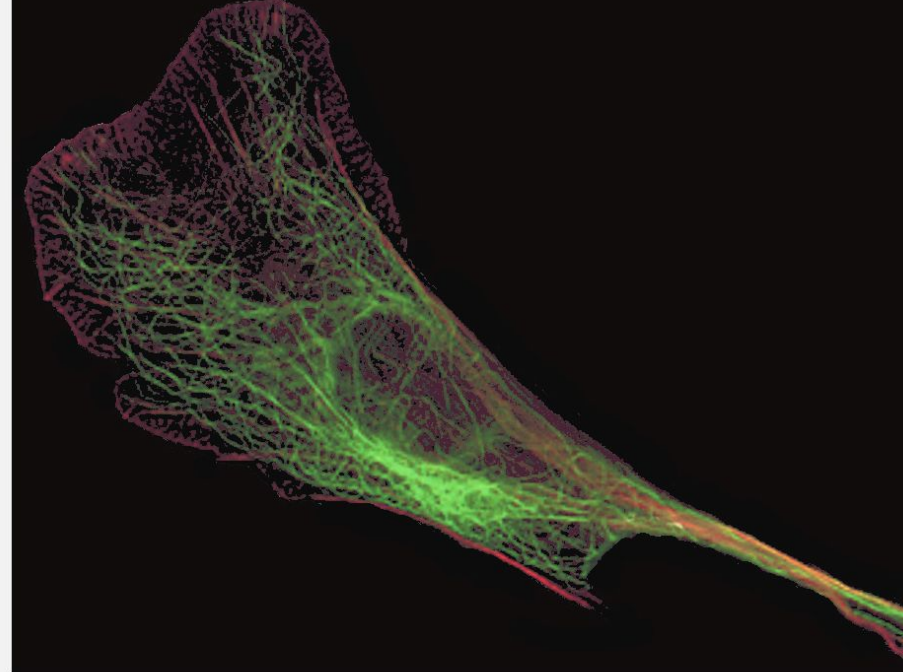
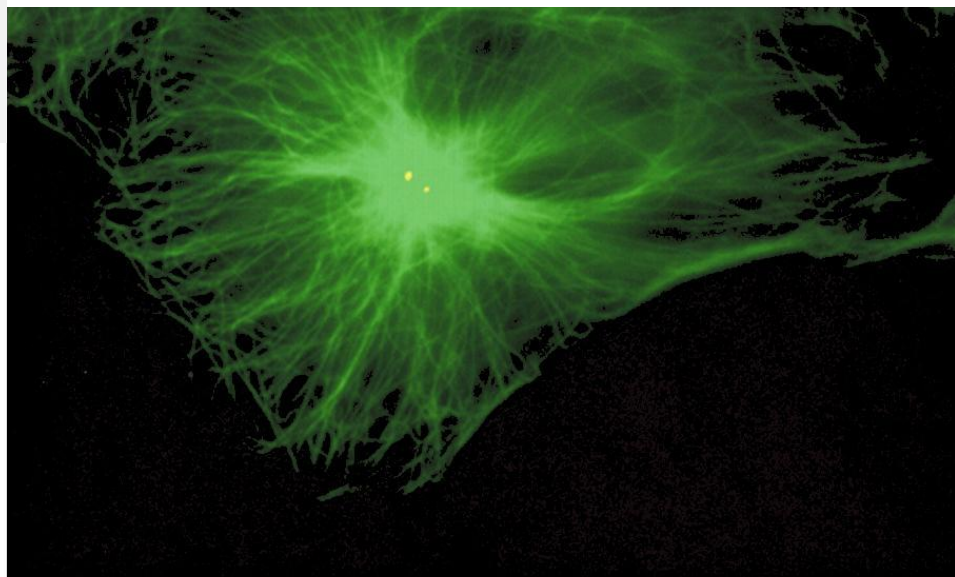


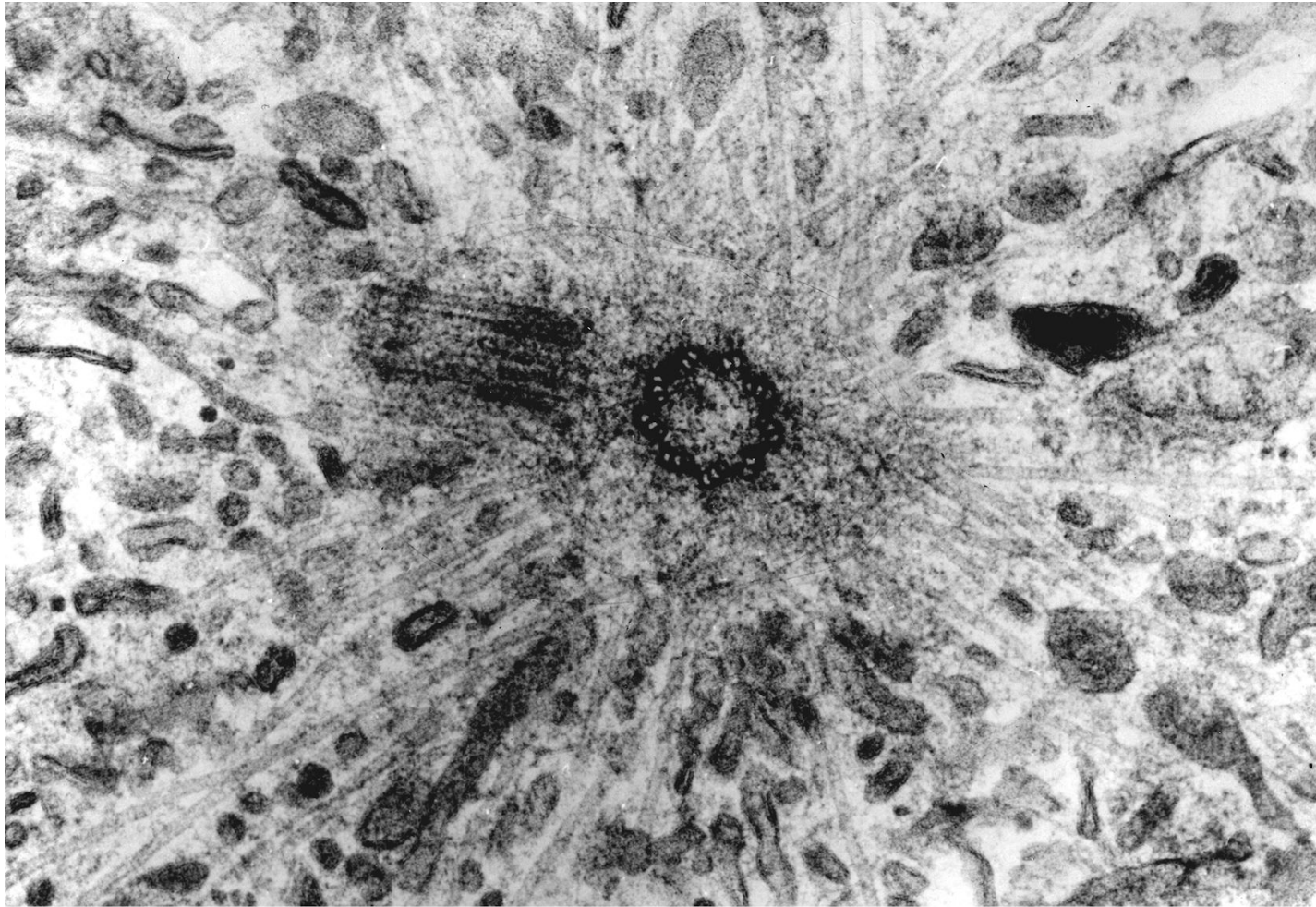
Митоз и апоптоз



**Двойное окрашивание фибробласта:
 α -тубулин и актин**

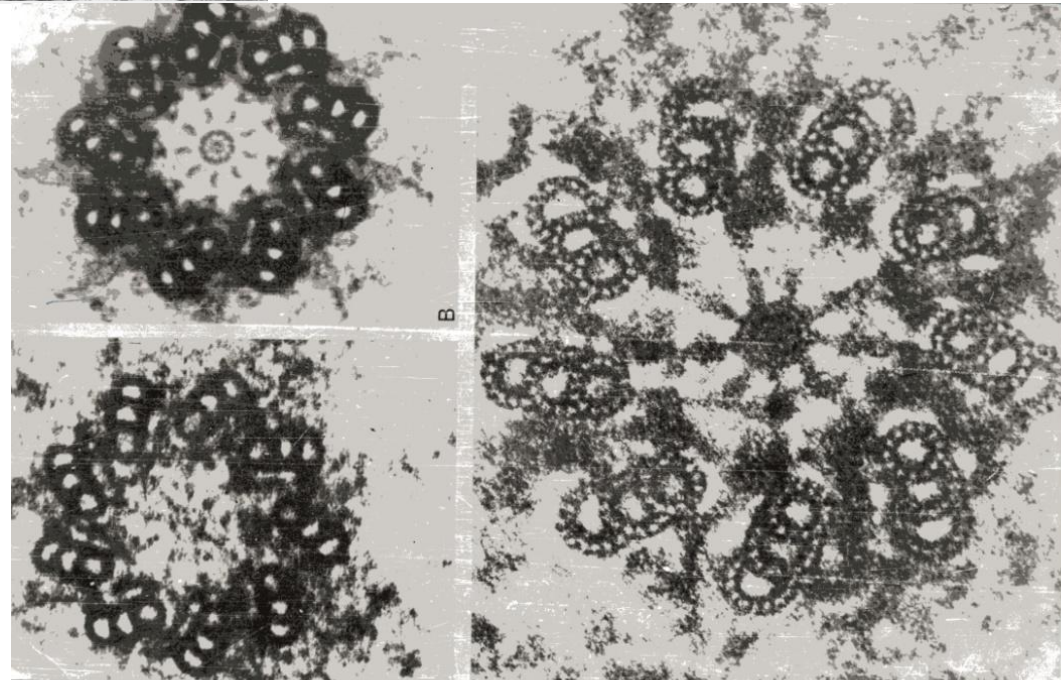
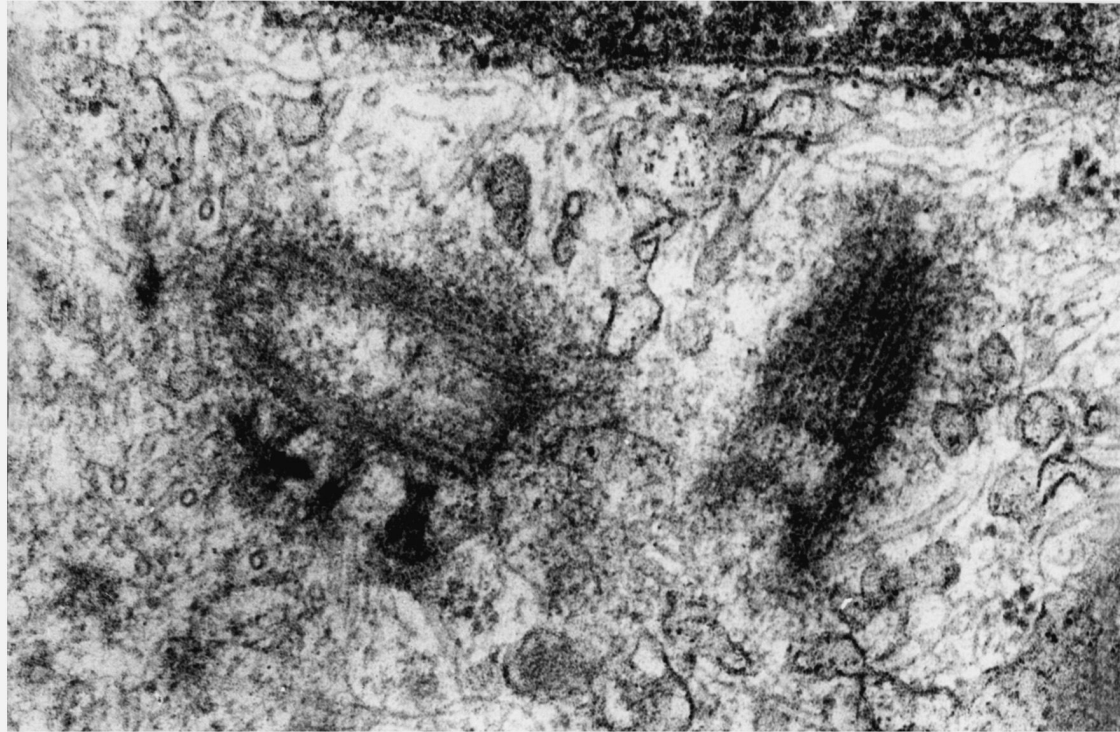


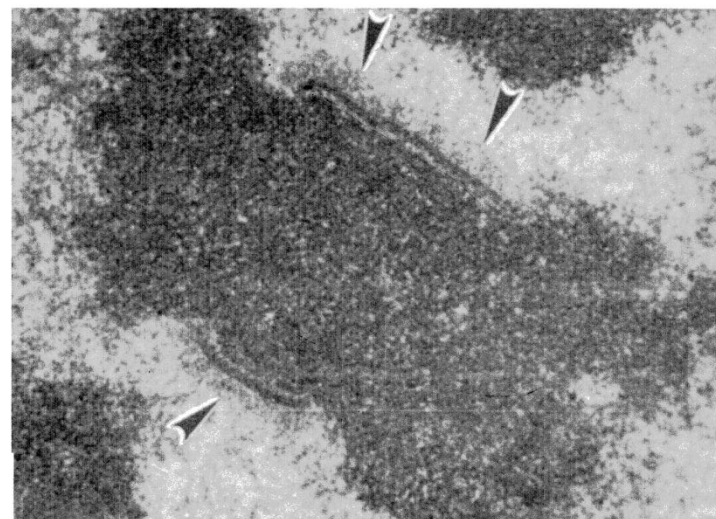
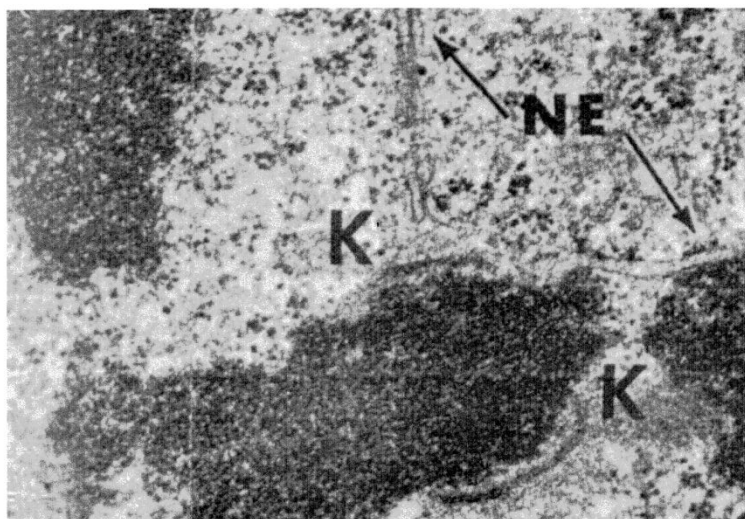
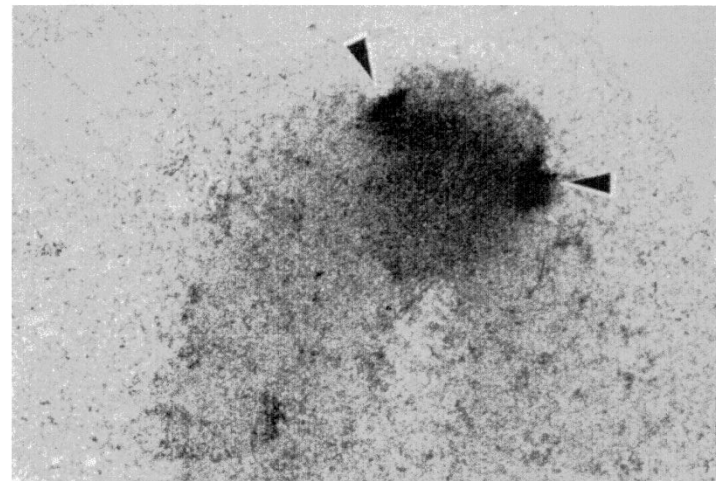
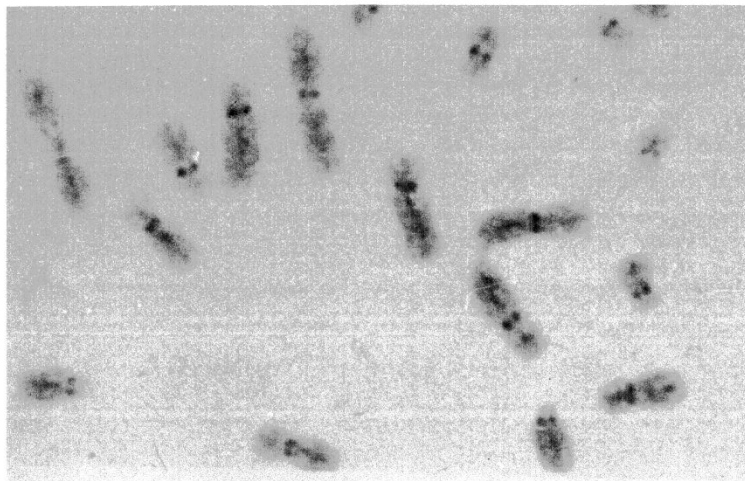
**Удвоение centrosомы. Двойное окрашивание:
 α -тубулин, γ -тубулин**



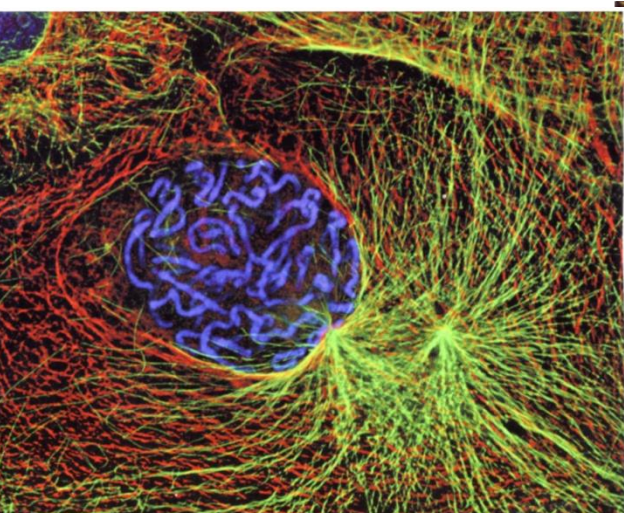
Центросома и микротрубочки в митозе

Клеточный центр в
интерфазе (центросома)

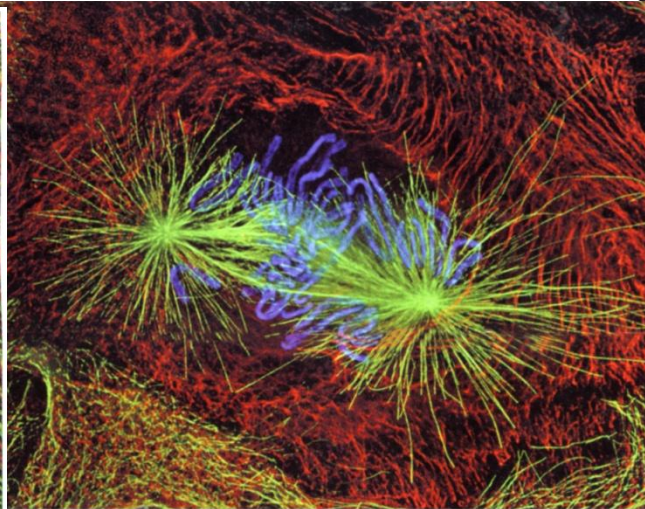




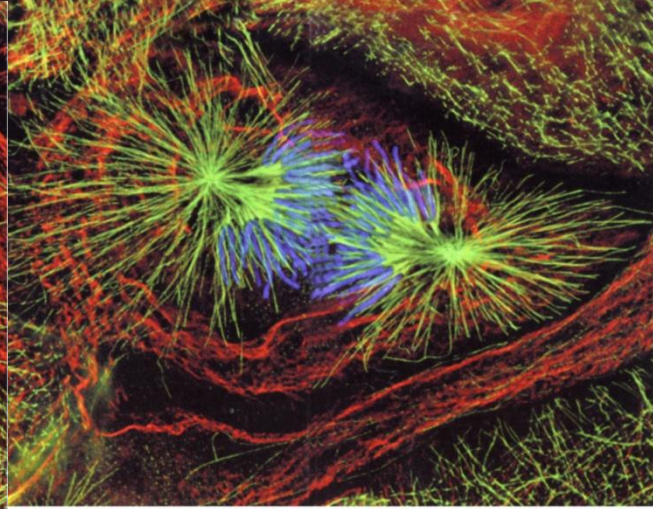
Кинетохор



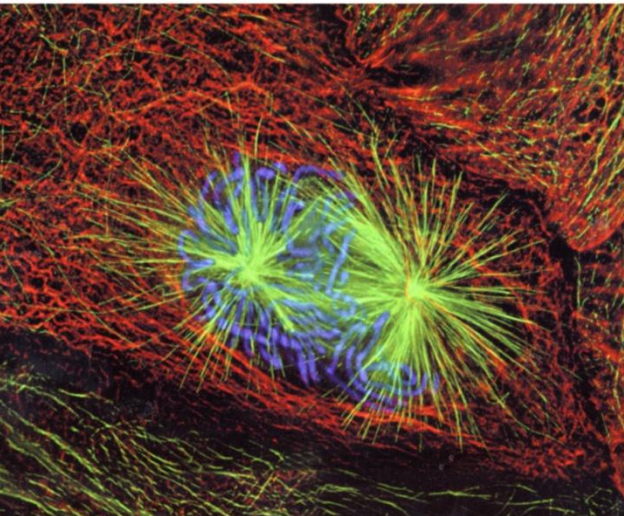
Профаза



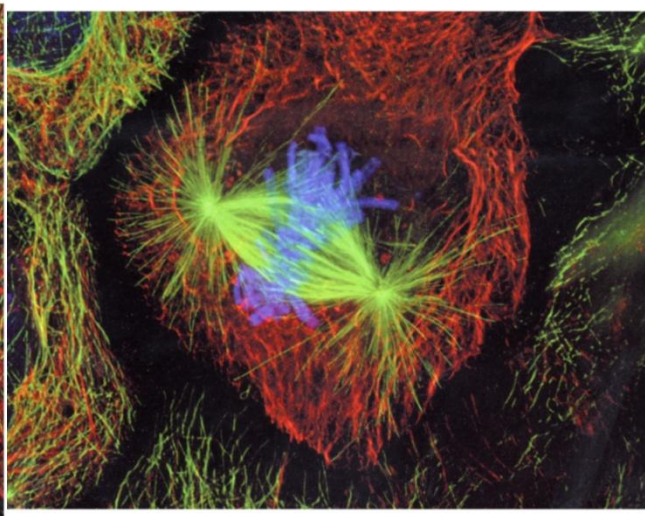
Прометафаза



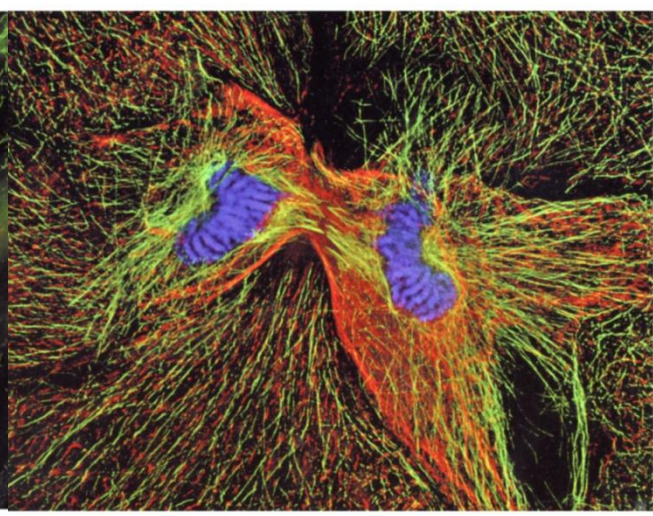
Анафаза



Прометафаза



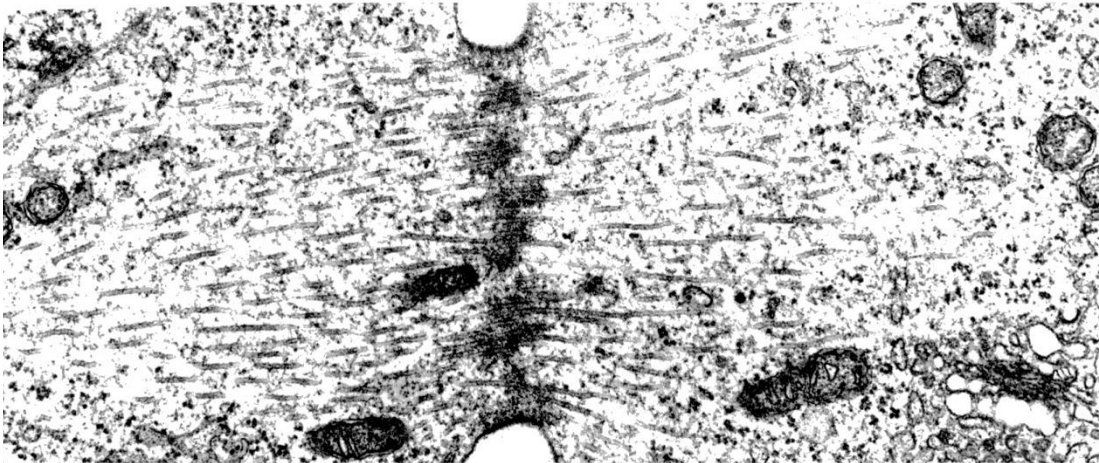
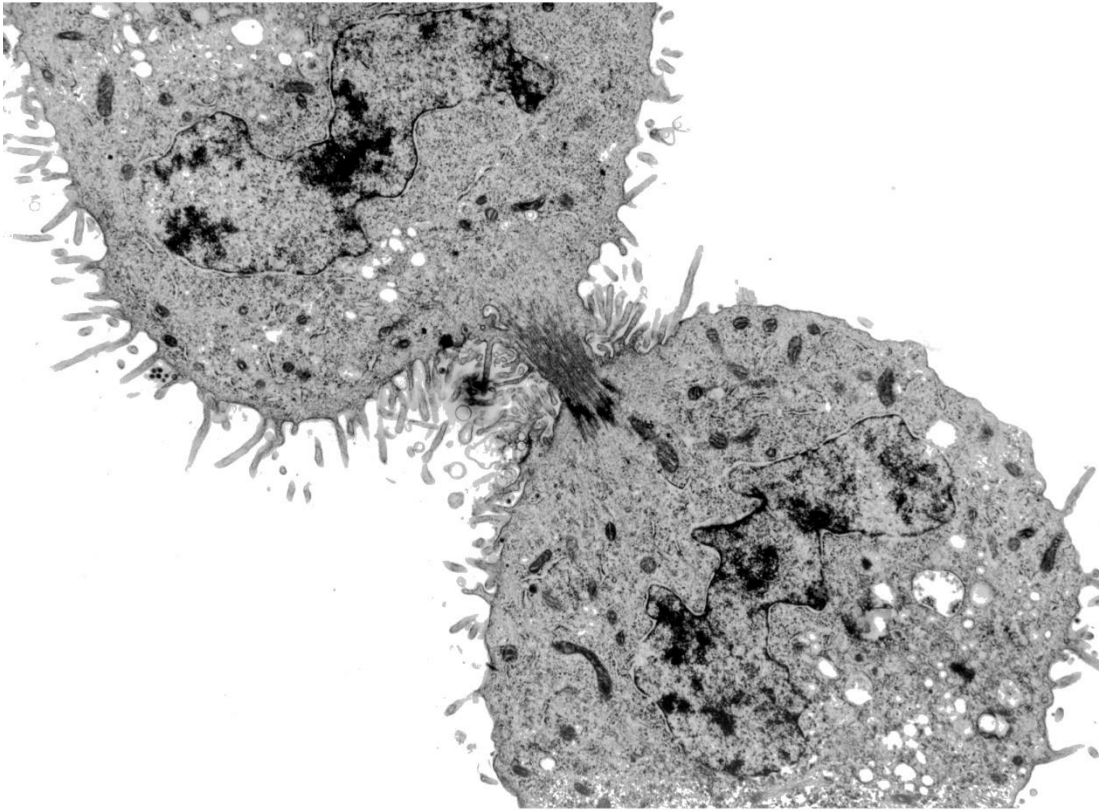
Метафаза

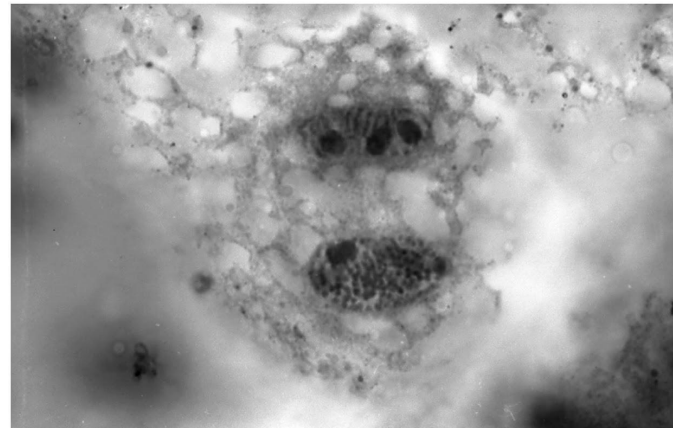
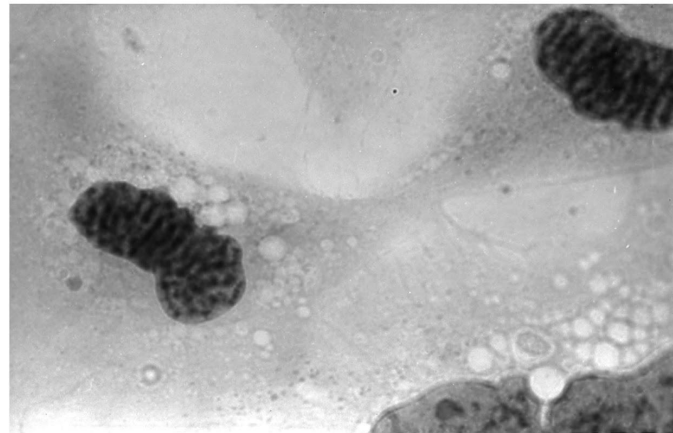
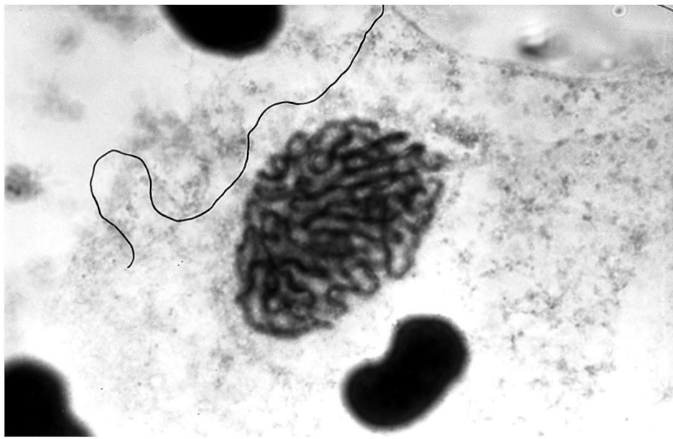
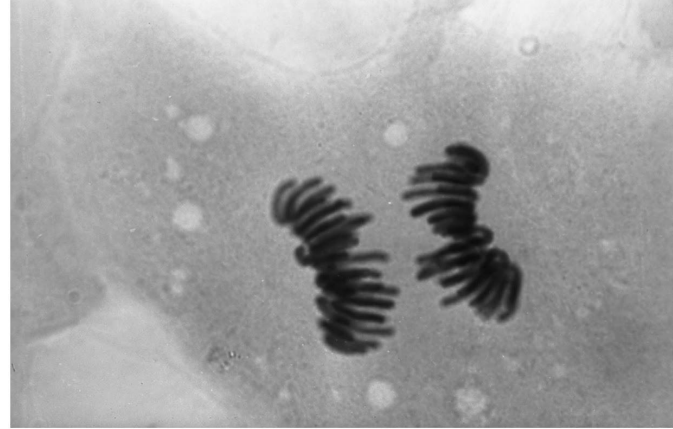
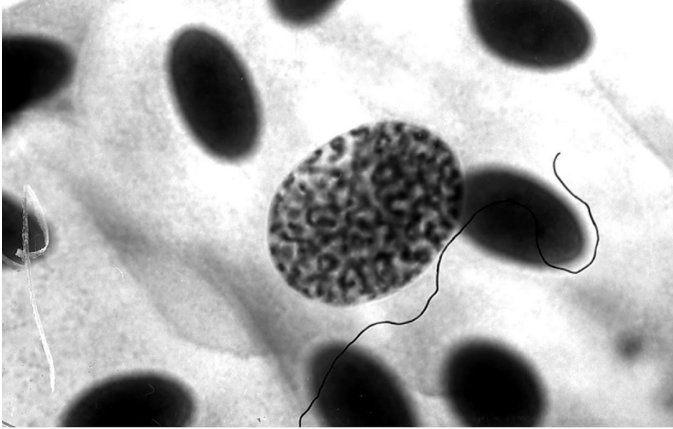


Телофаза

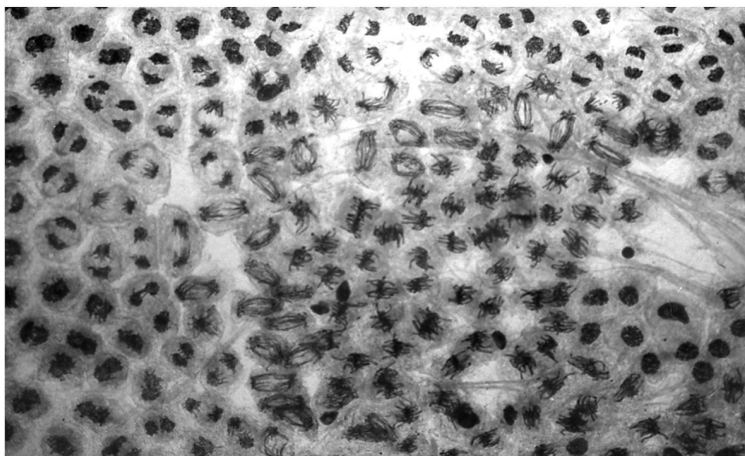
МИТОЗ В ЖИВОТНОЙ КЛЕТКЕ

Цитокинез





Митозы в клетках культуры пневмоцитов тритона

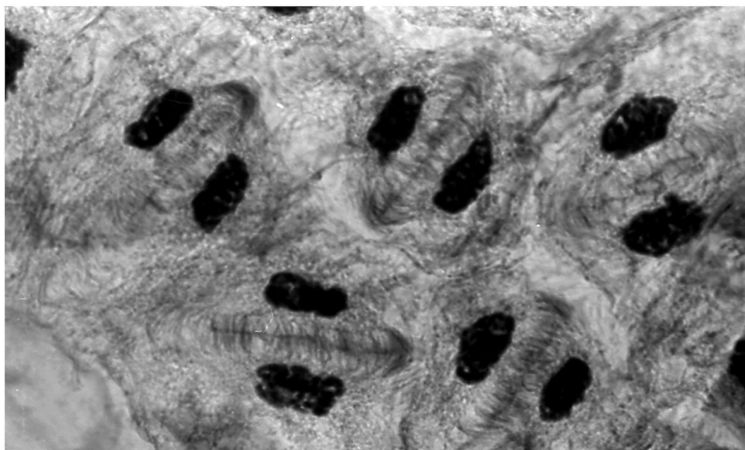


Митоз в
эндосперме
пшеницы

А. Митотическая
волна



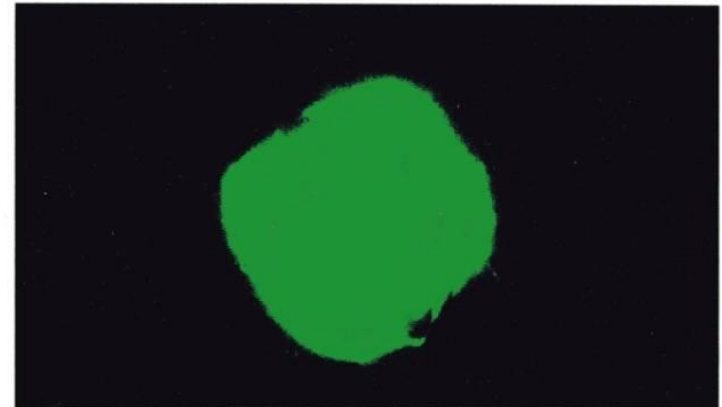
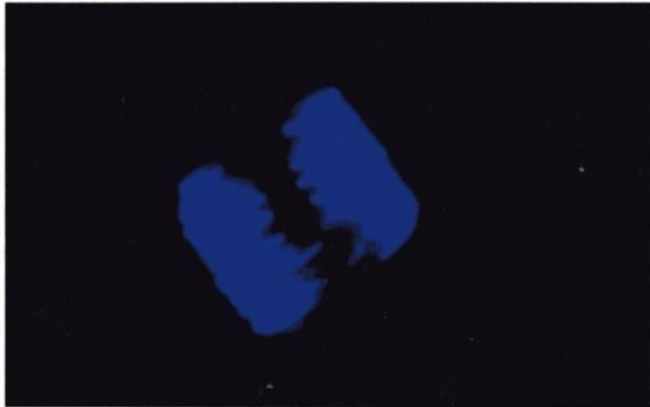
Б. Анафаза,
телофаза



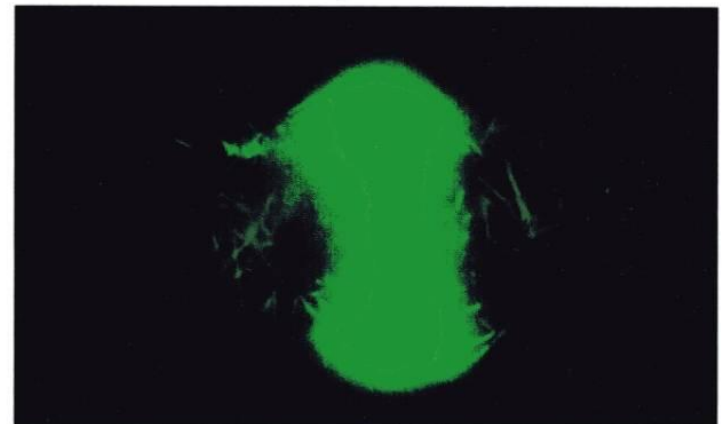
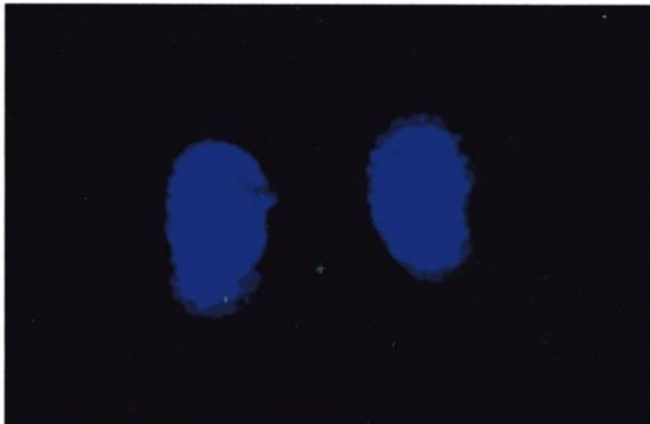
В. Телофаза
(фрагмопласт)

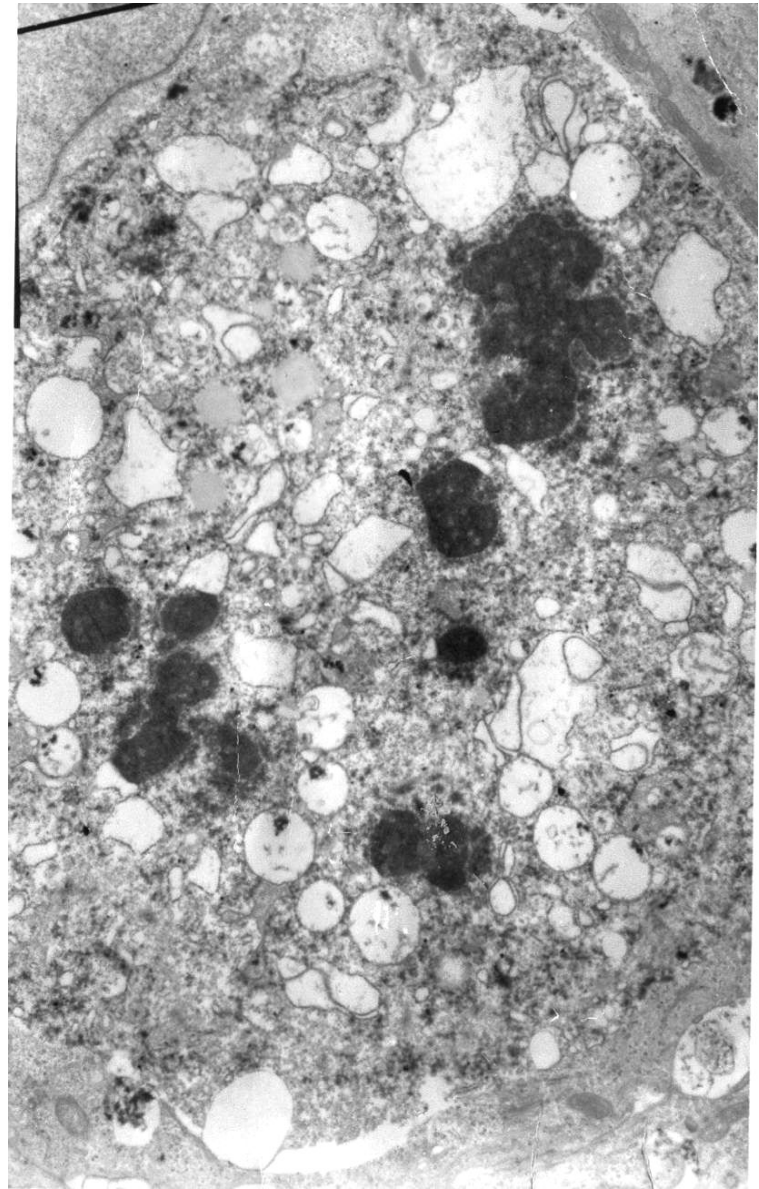
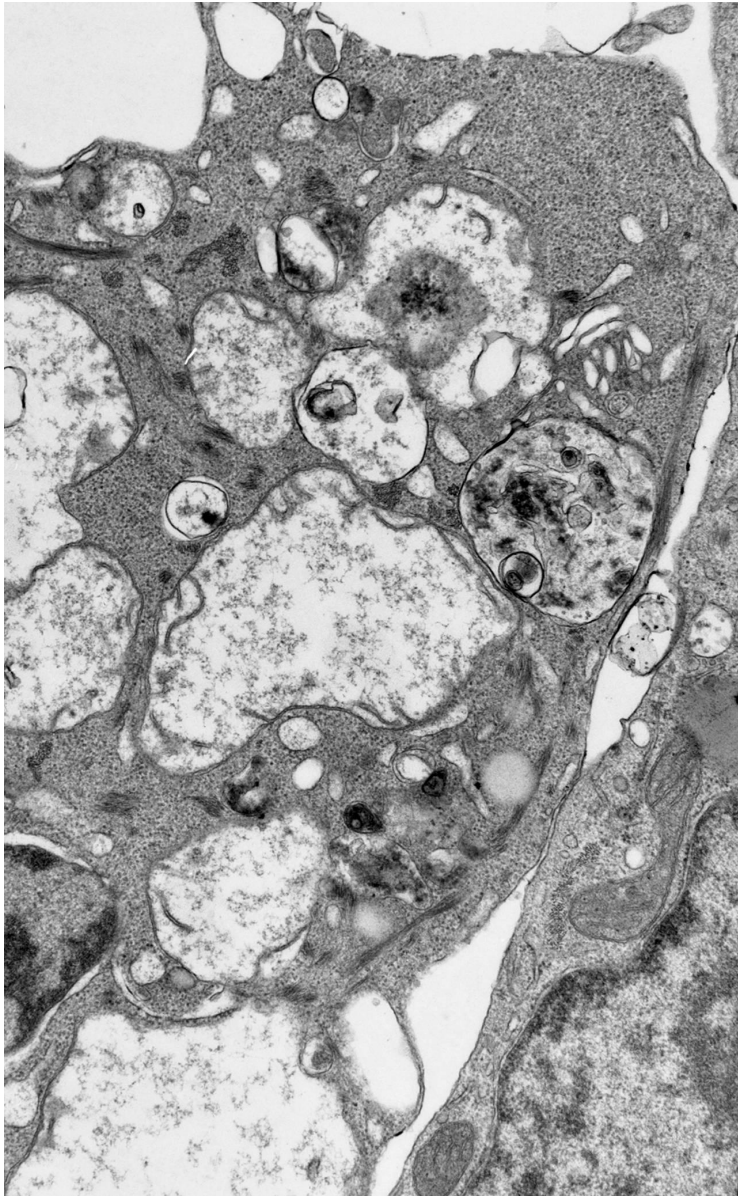
Клетки меристемы корня пшеницы *Triticum aestivum*

АНАФАЗА

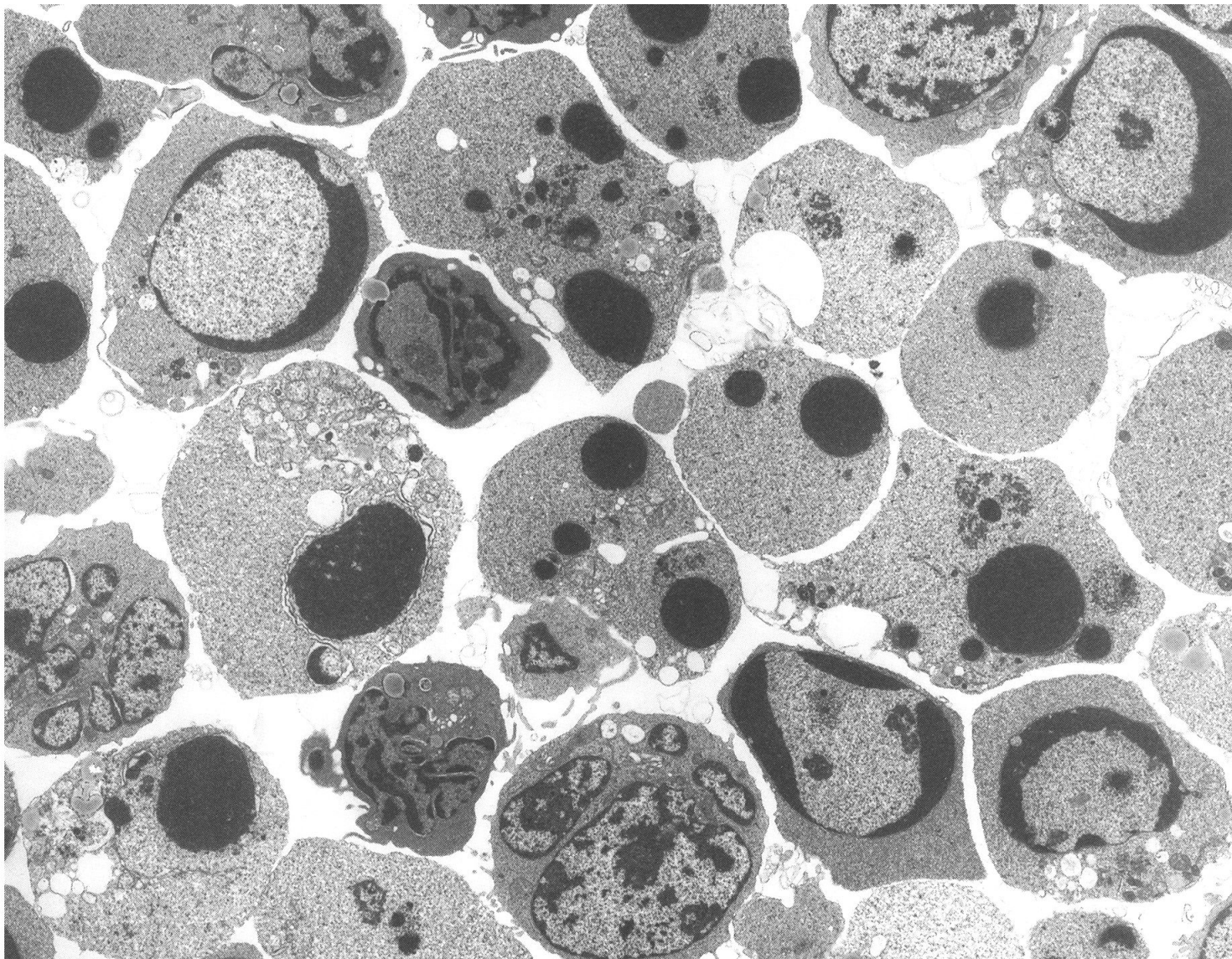


ТЕЛОФАЗА



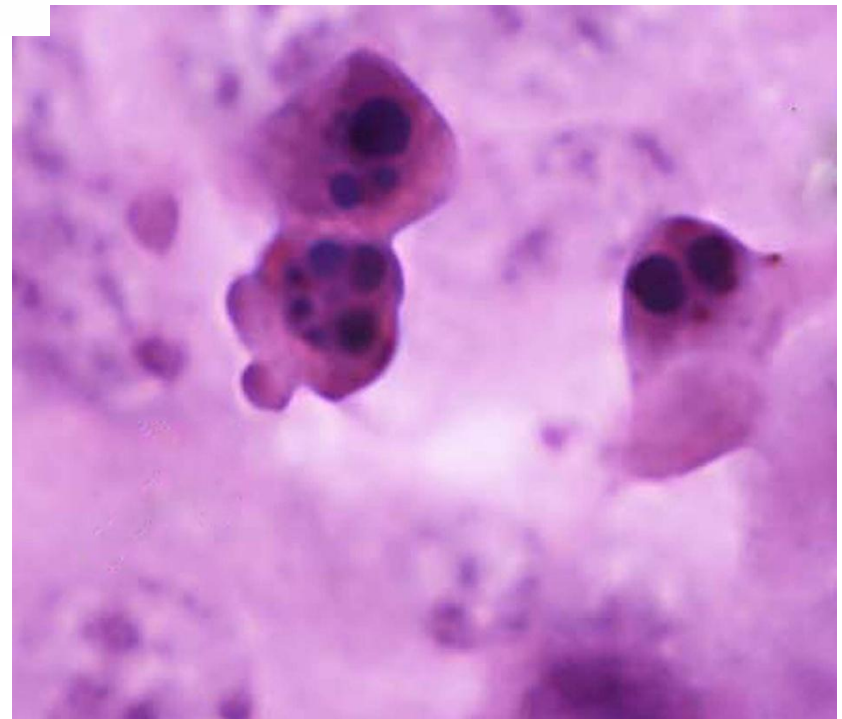
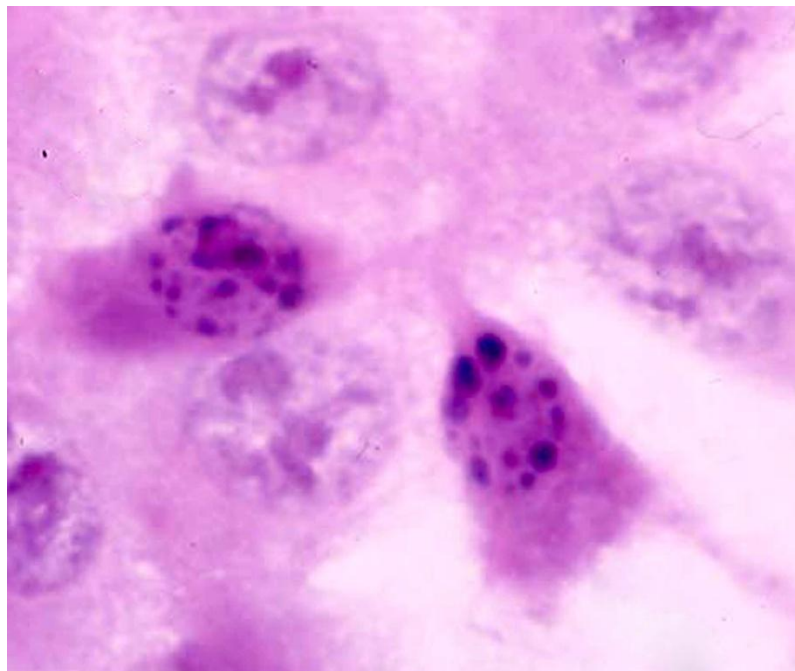
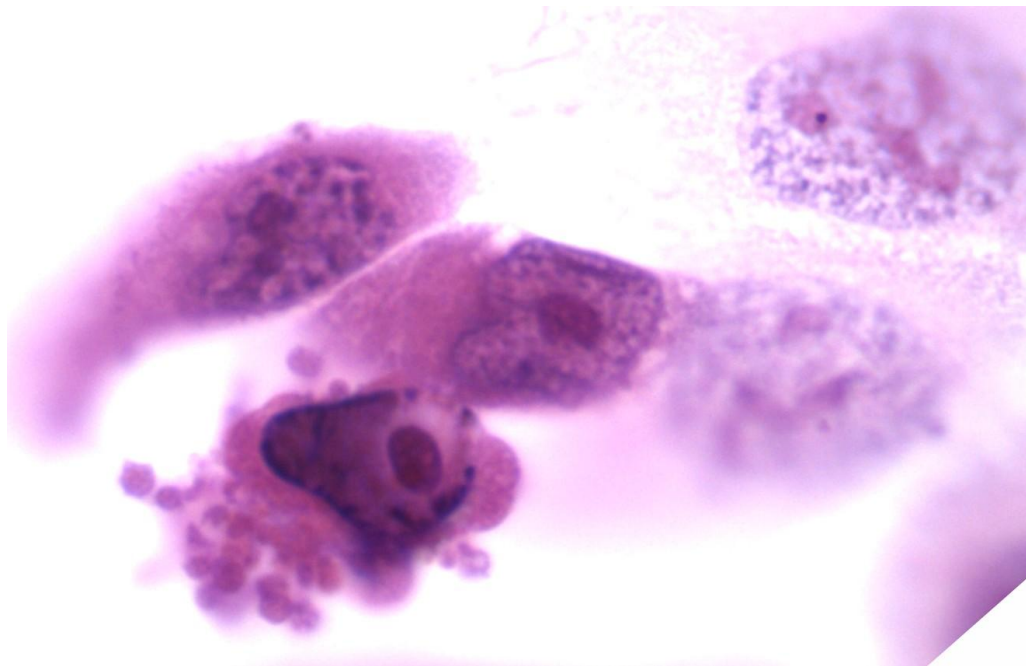


Стадии некроза

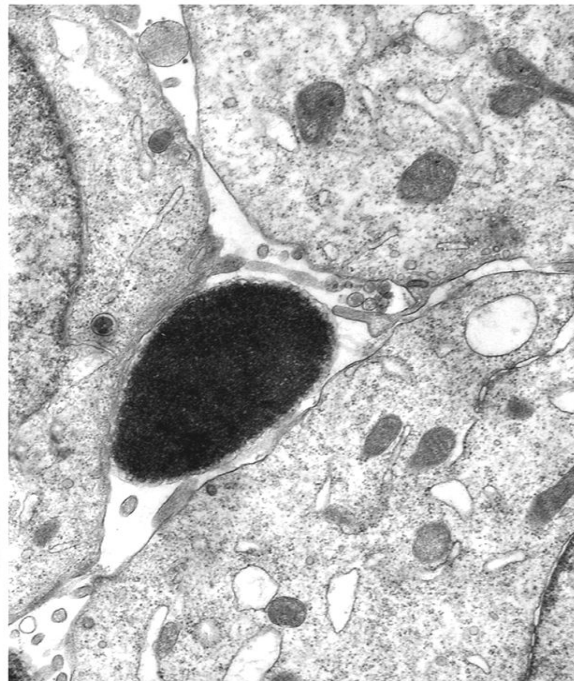
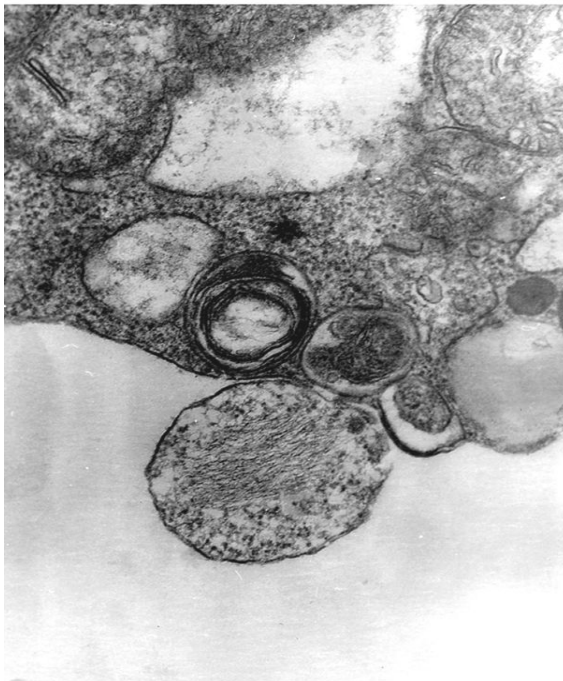
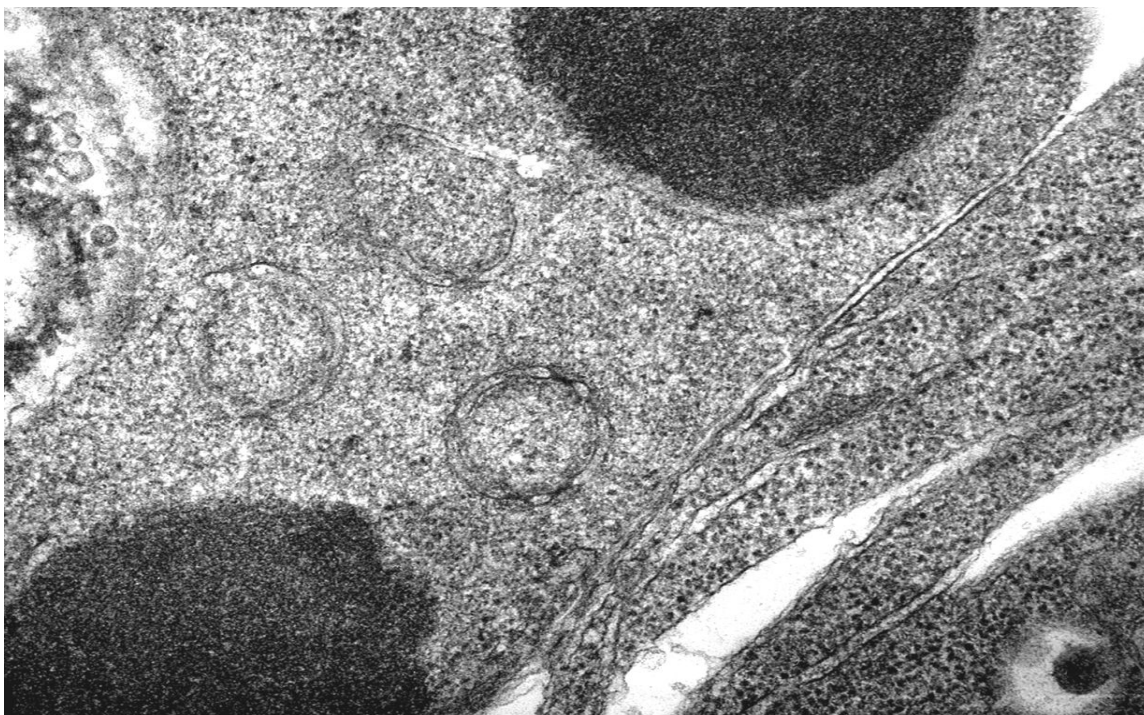


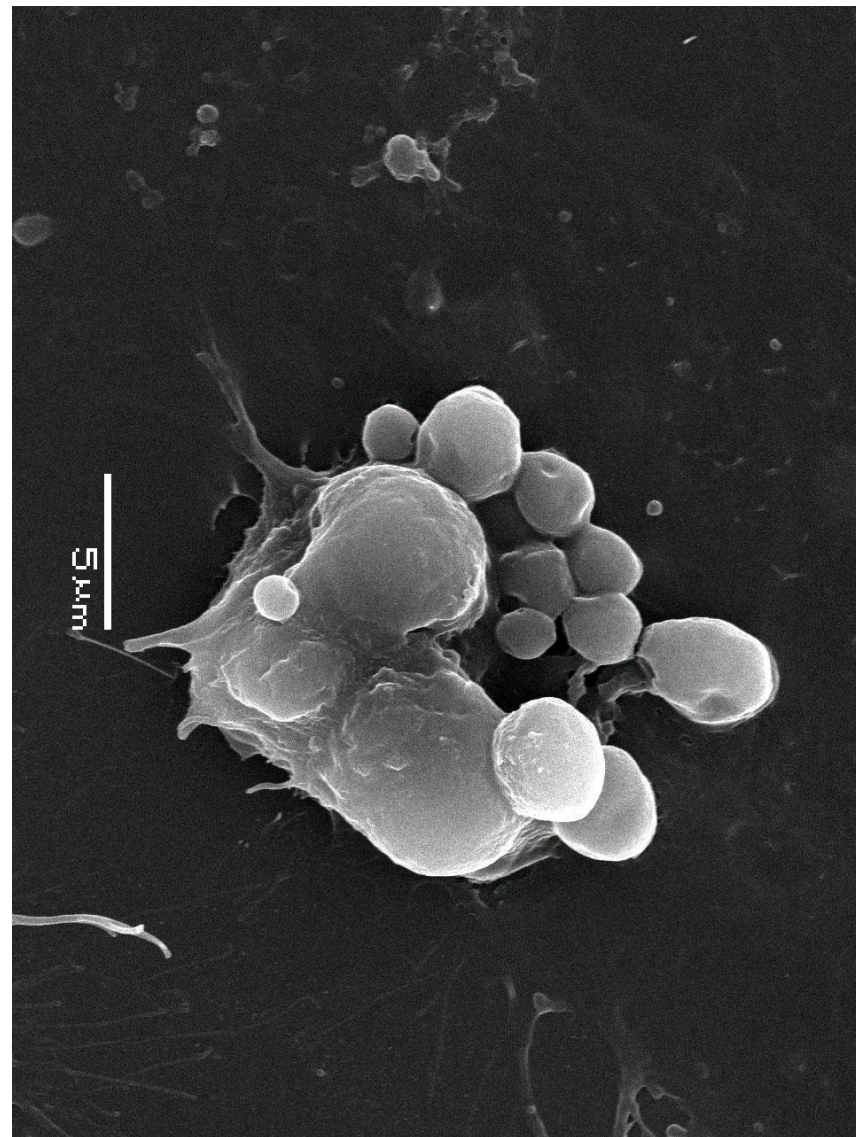
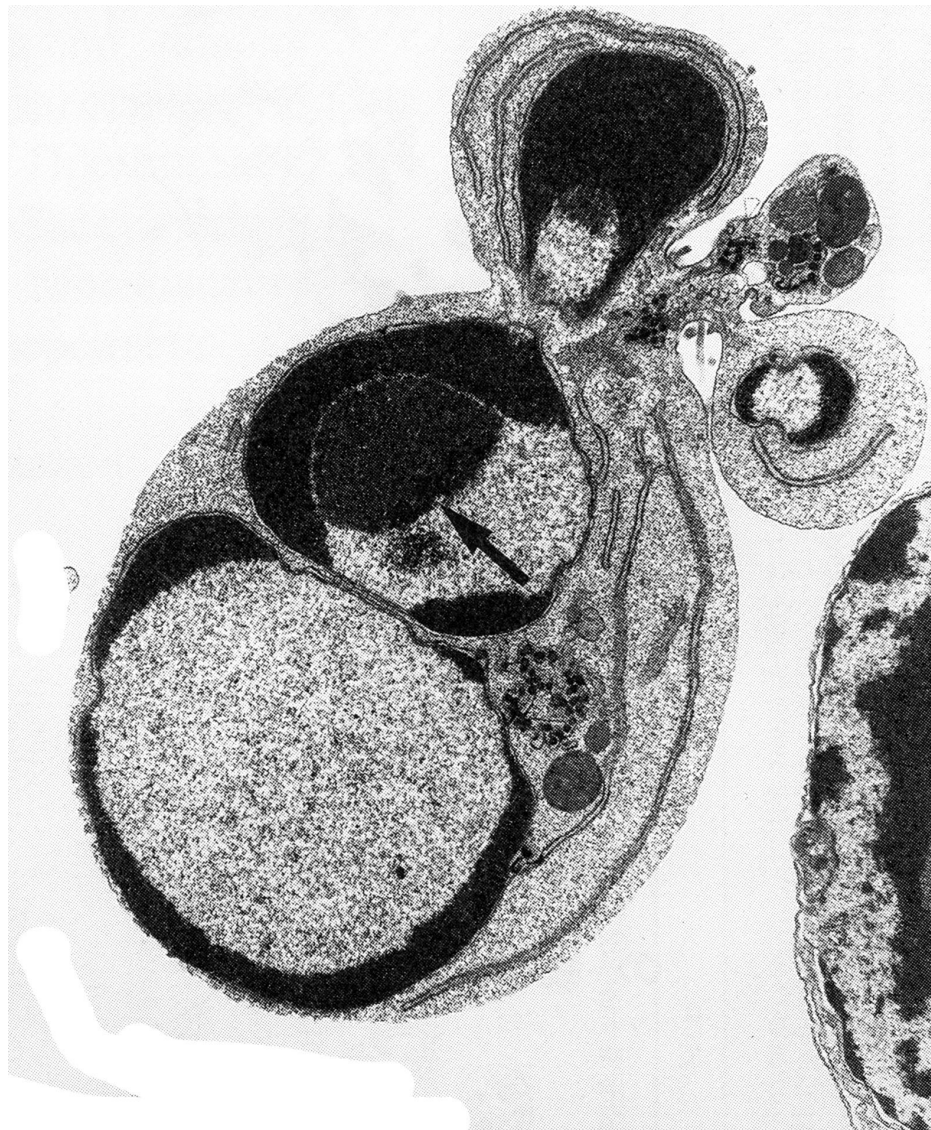
Апоптотические клетки лимфомы при
тепловом шоке

ΑΠΟΠΤΩΣ



Стадии апоптоза





Блеббинг

Иммуноцитохимическое окрашивание на активную каспазу 3

