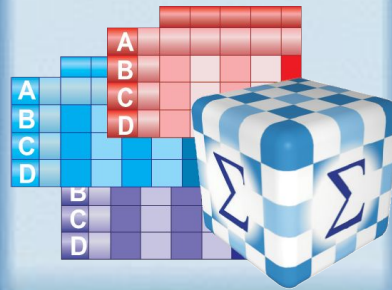




The .NET ModelKit Suite

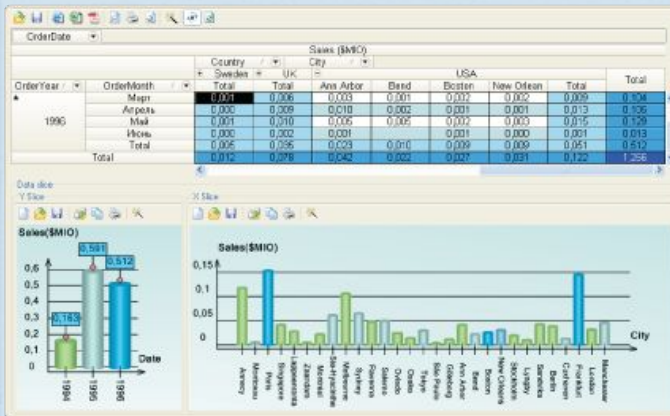
is a pack of .NET components which offers complex solution for reports creation, data visualization and data analysis. The product represents an interconnected components framework for the creation of corporative reporting and decision making systems.



The .NET ModelKit Suite includes:

OLAP ModelKit

is an advanced OLAP component. You can perform complex multidimensional analysis using any .NET data sources. The results of the analysis can be represented in the form of charts due to the built-in chart component.

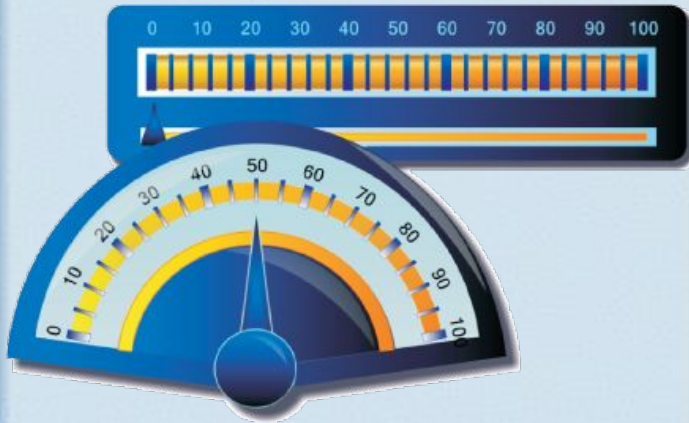


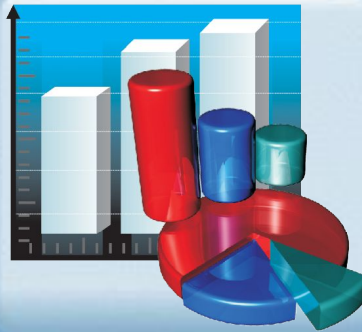


The .NET ModelKit Suite includes:

Instrumentation ModelKit

is a component intended for designing hardware emulators, SCADA systems and digital dashboards for monitoring of data in real time. You can use a rich library of ready made instruments. The full-featured designer allows the creation of new gauges or customization and modification of the existing ones.





The .NET ModelKit Suite includes:

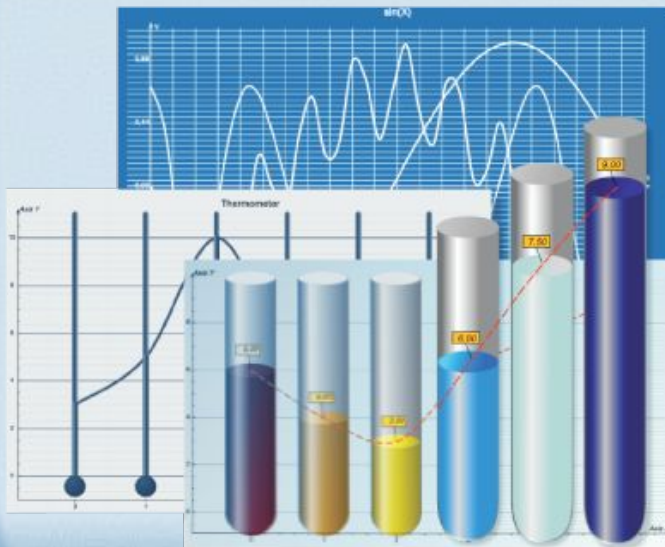


Chart ModelKit –

is a graphical component for creation of functional 2D charts and diagrams with a true WYSIWYG designer and improved data binding model. You can build unique attractive charts using an extended library chart elements and types.

The .NET ModelKit Benefits:



- License of all released products at the lowest price.

- Free 1-year product updates and upgrades. With your subscription, you will get all new product versions including major ones.

- All new products included in the .Net ModelKit Suite will be sent to you automatically.

- Free 1-year technical support.

- Access to beta version.

- Flexible Licensing.

- Subscription renewal is available for 40% of your current license price.

- Professional Edition of the .NET ModelKit Suite is delivered with full source code.

The .NET ModelKit Suite supports the following data sources

Any .NET data sources:



IEnumerable



IList



IListSource



ICustomTypeDescriptor



ITypedList



ADO.NET



Custom business
objects

The .NET ModelKit Suite has the following interface localizations:



Russian



English



French



Thai



Romanian



Swedish



Italian



Finnish



Turkish



Serbian



Dutch



Spanish



German



Norwegian



Portuguese



Czech



Arabic



Danish

Flexible licensing

The .NET ModelKit Suite

is licensed for each computer on which it is installed and used. If you use a product on several machines, you should purchase additional licenses. Each additional license costs 50% of a full license price.



Price starts from \$ 1 600