

Rheumatic illnesses



***Prepared by: Ergonysova B.E
Kenesbek M.A
Checked by: Tolebaev Zh.A
Group: GM14-29-01***



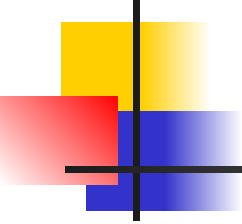
Rheumatic illnesses

- - *are the group of diseases in basis of development of which is the progressive system disorganization of connecting tissue and vessels, which is predefined by immune violations .*



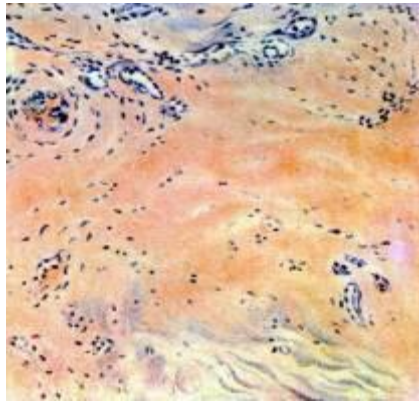
Classification of rheumatic illnesses

- rheumatism;
- rheumatoid arthritis (RA);
- lupus erythematosus (LE);
- systemic scleroderma (SS);
- nodular periarteritis (NPA) and other systemic vasculites;
- dermatomyositis;
- illness (syndrome) of Sjogren;
- illness of Bechterew (spondylitis deformans).

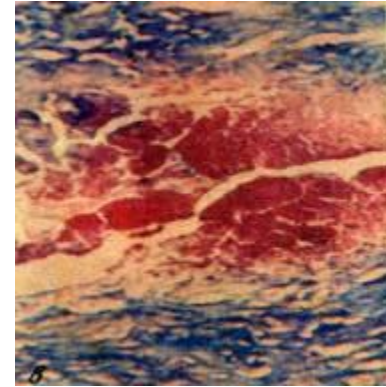
- 
-
- **All rheumatic illnesses are combined by the systemic progressive damage of connecting tissue,** which is characterized by *stages* and includes 4 types of changes:

Stages of disorganization of connecting tissue

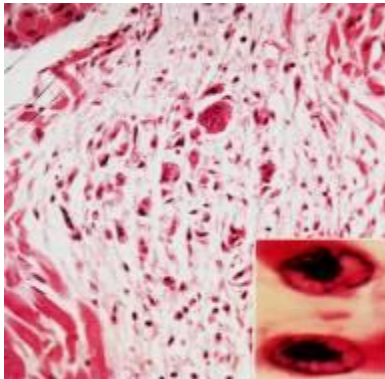
Mucoid swelling



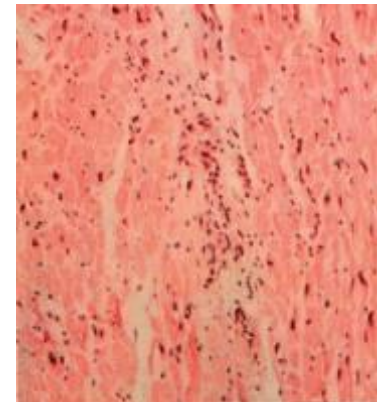
Fibrous changes



Cellular reactions
(granulomatous inflammation)



Sclerosis





Rheumatism

(Sokolsky-Bouillaud disease)

is the infectious-allergic disease which is characterized by system disorganization of connecting tissue with the dominant defeat of the heart-vessels system.

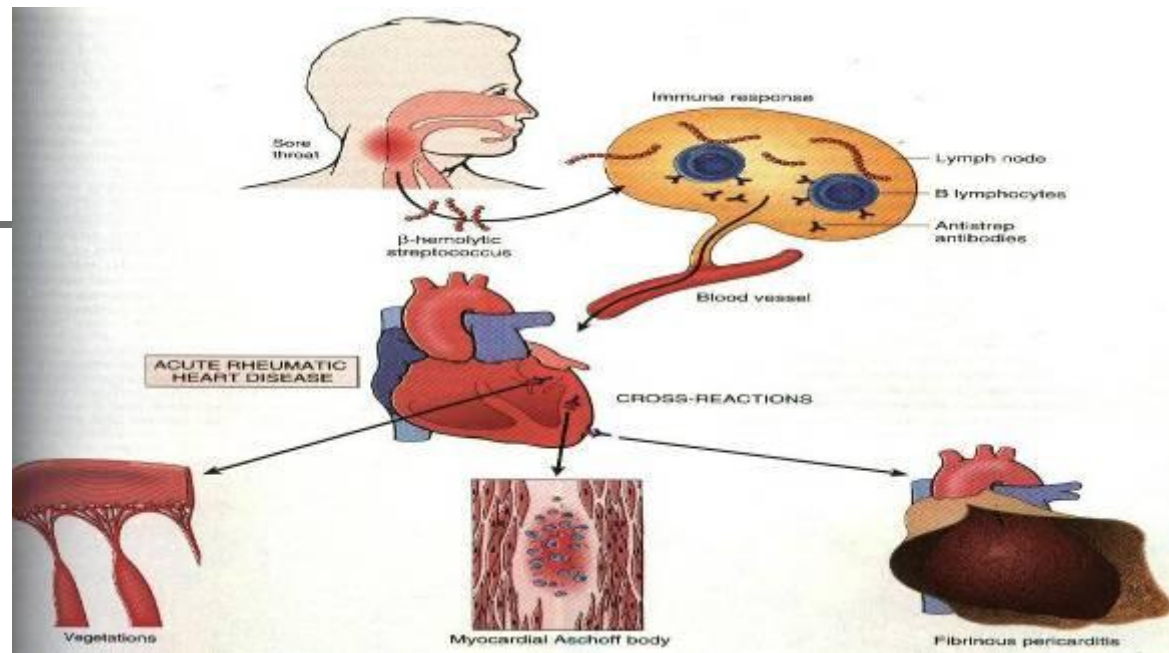
An exciter is the β -haemolytic streptococcus of group A. 1-3 % of peoples which had streptococci quinsies will be ill by rheumatism. This mean that is the inclination coupled with X-chromosome.

Clinico-morphologic forms of rheumatism



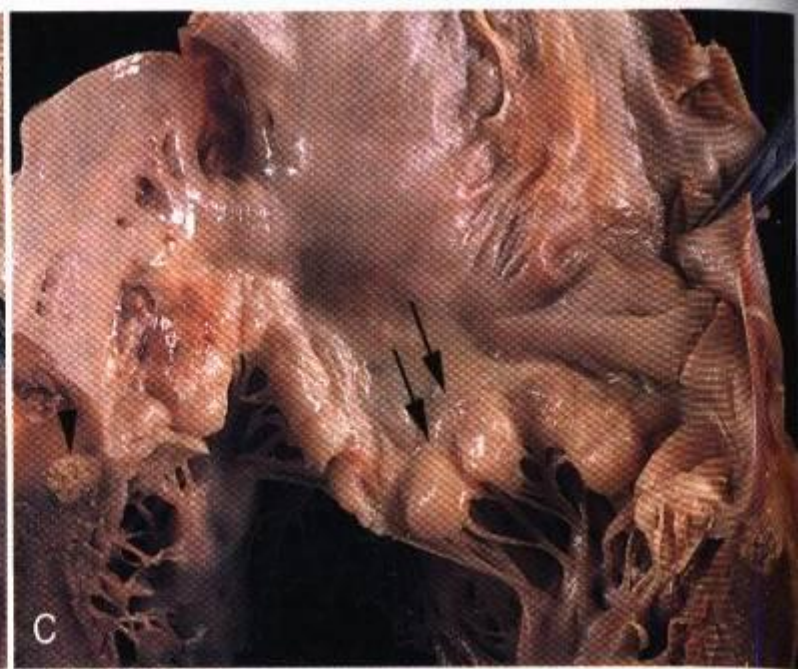
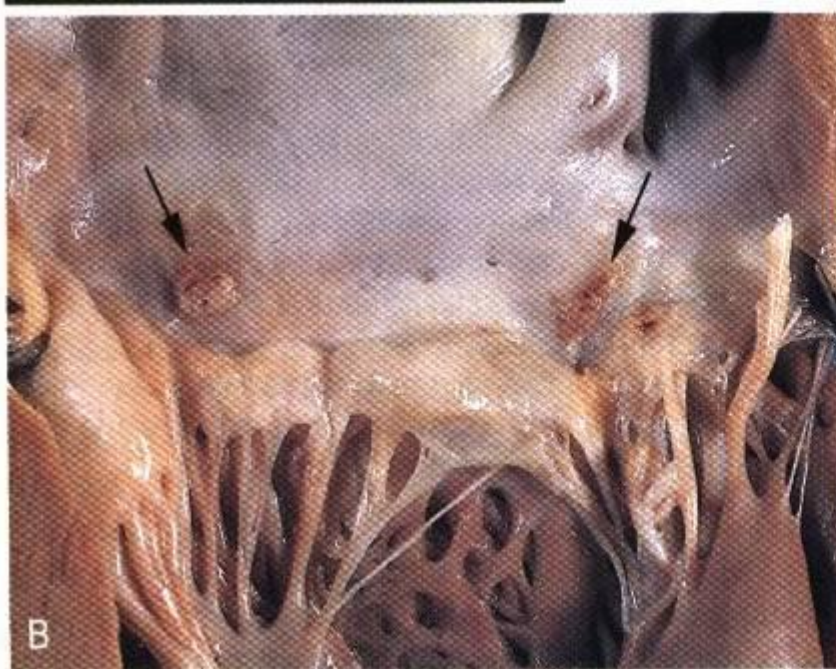
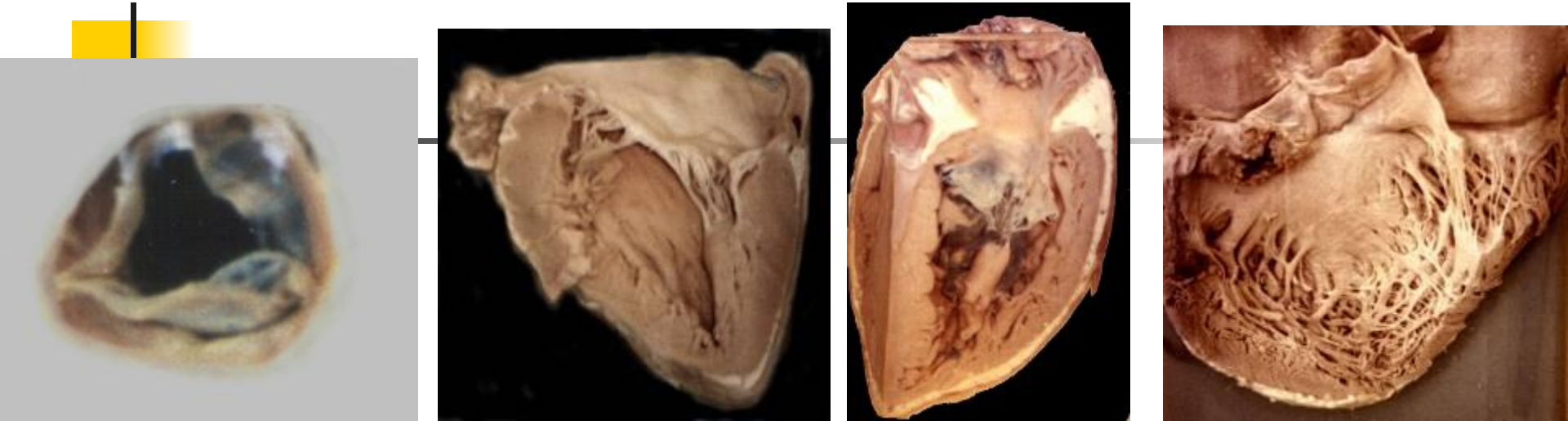
- cardiovascular;
- polyarthritic;
- nodular;
- cerebral.

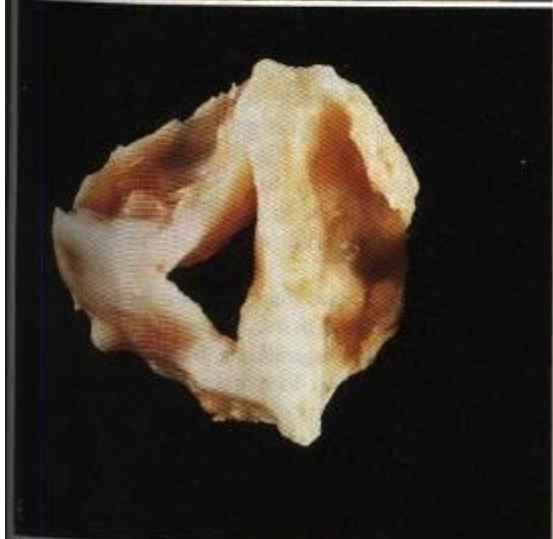
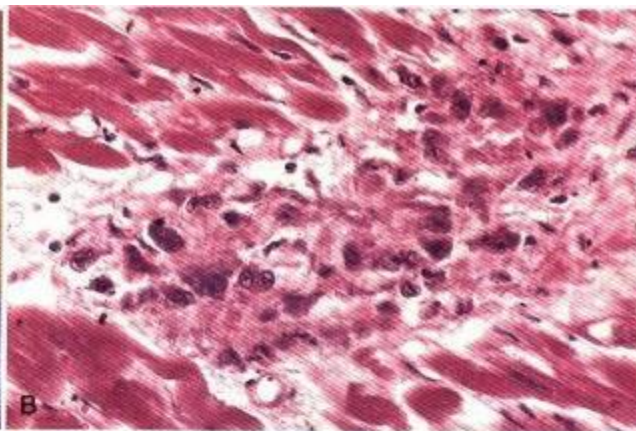
Cardiovascular form of rheumatism



- **Endocarditis:** valvular, chordal, atriparietal; acute diffuse, acute warty, fibroplastic, relapsing warty
- **Myocarditis:** granulomatous (nodular productive), diffuse interstitial exudative, focal interstitial exudative.
- **Pericarditis:** serous, serofibrinous, fibrinous.
- **Vasculitis:** capillaritis, arteriolaritis, arteritis.

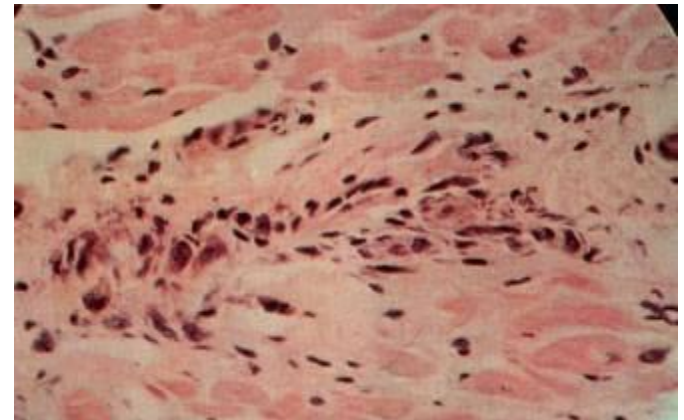
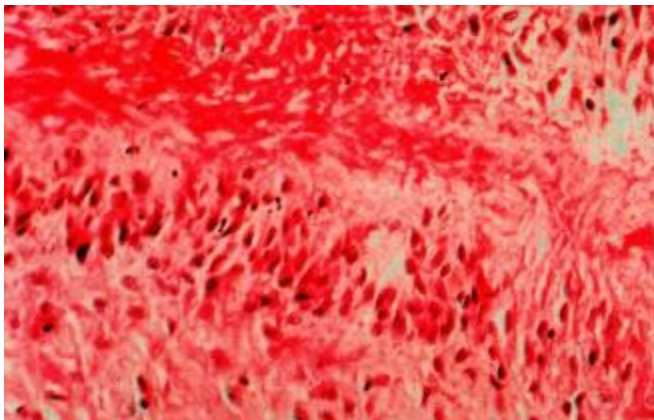
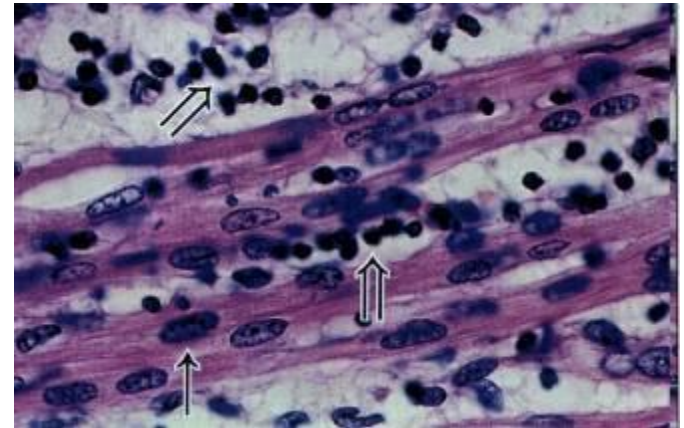
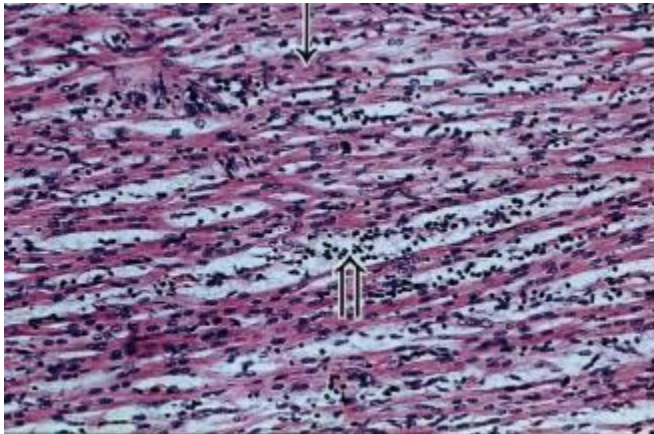
Endocarditis



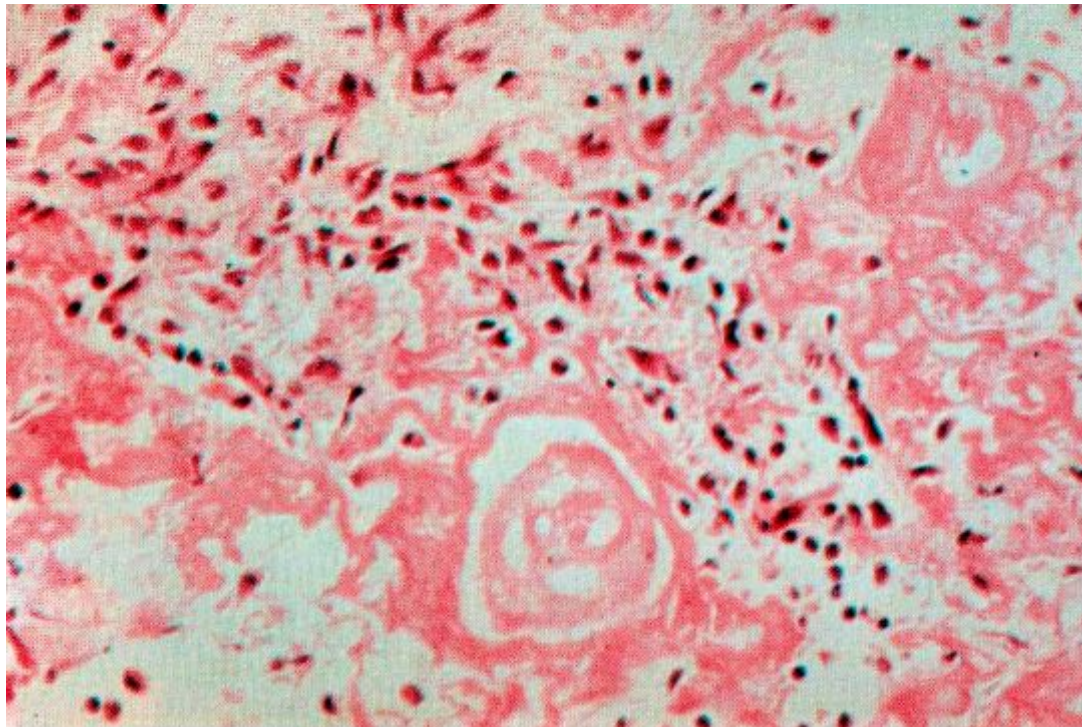


- The heart tends to dilate
- Acute and chronic valvulitis
- Mural thrombi

Myocarditis



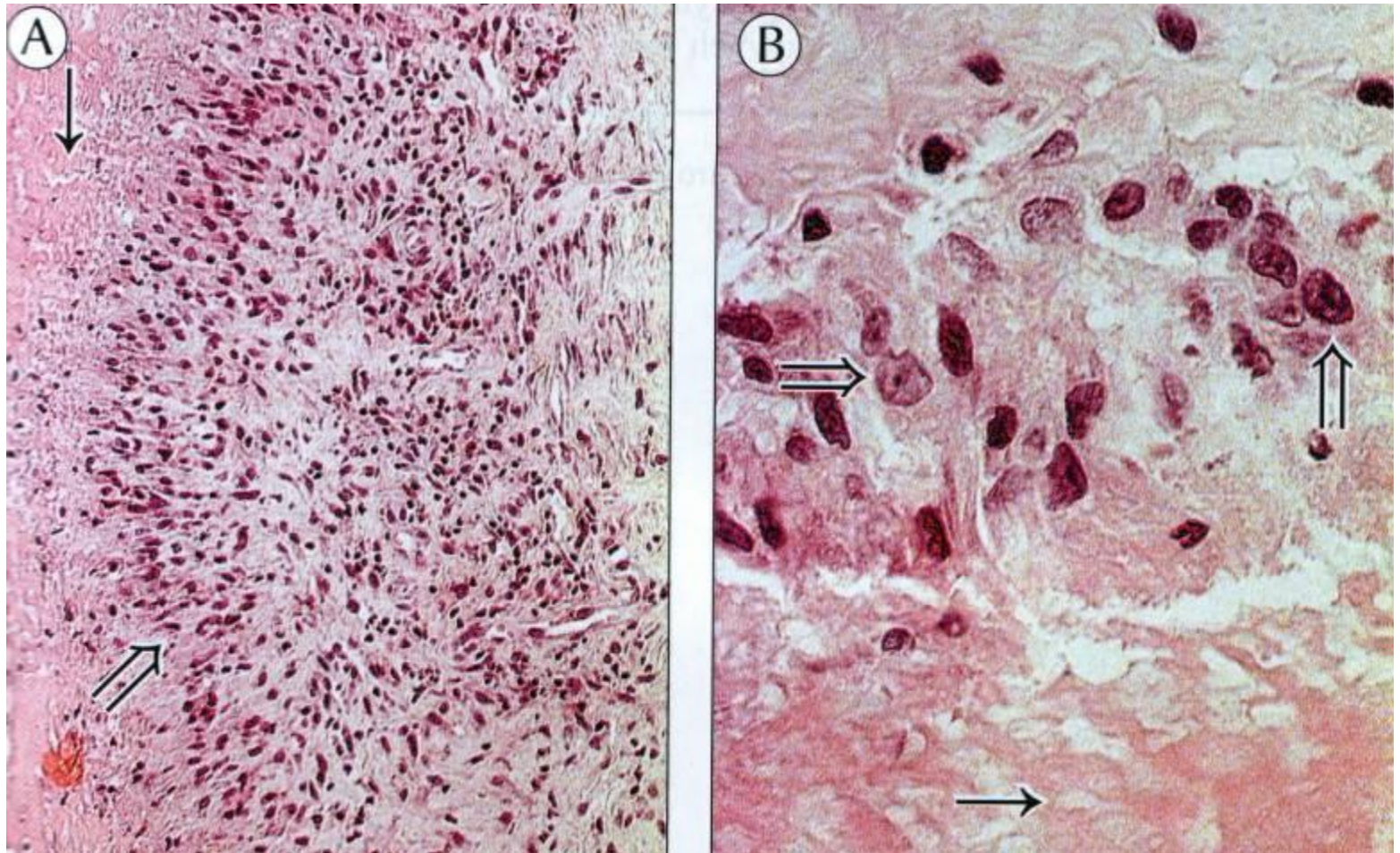
Pericarditis



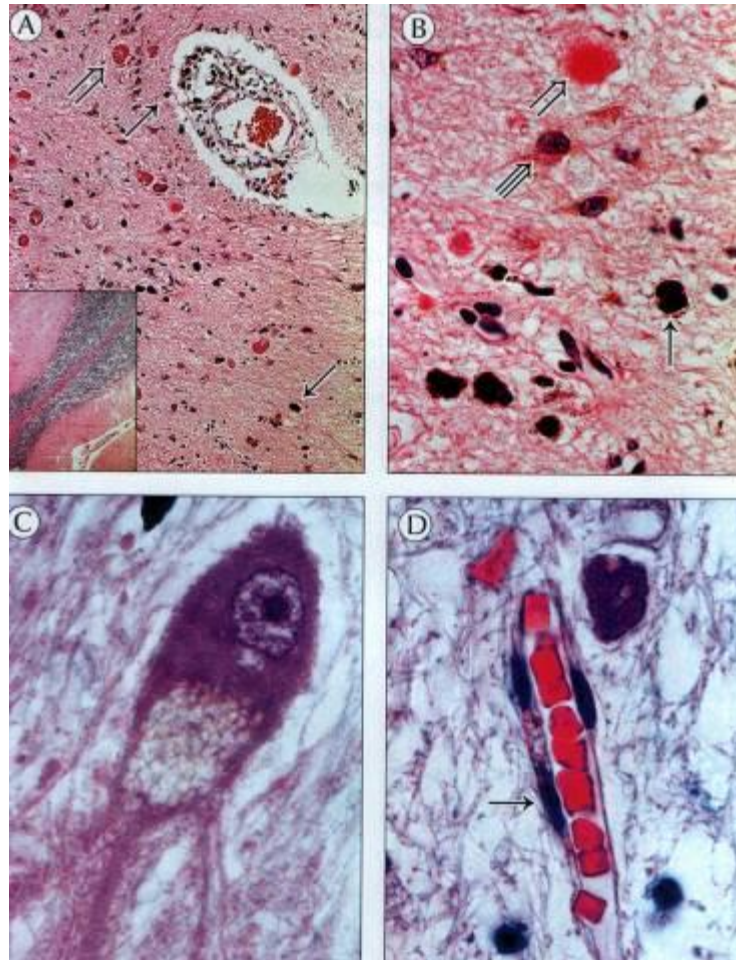
Polyarthritic form of rheumatism



Nodular form of rheumatism



Cerebral form of rheumatism





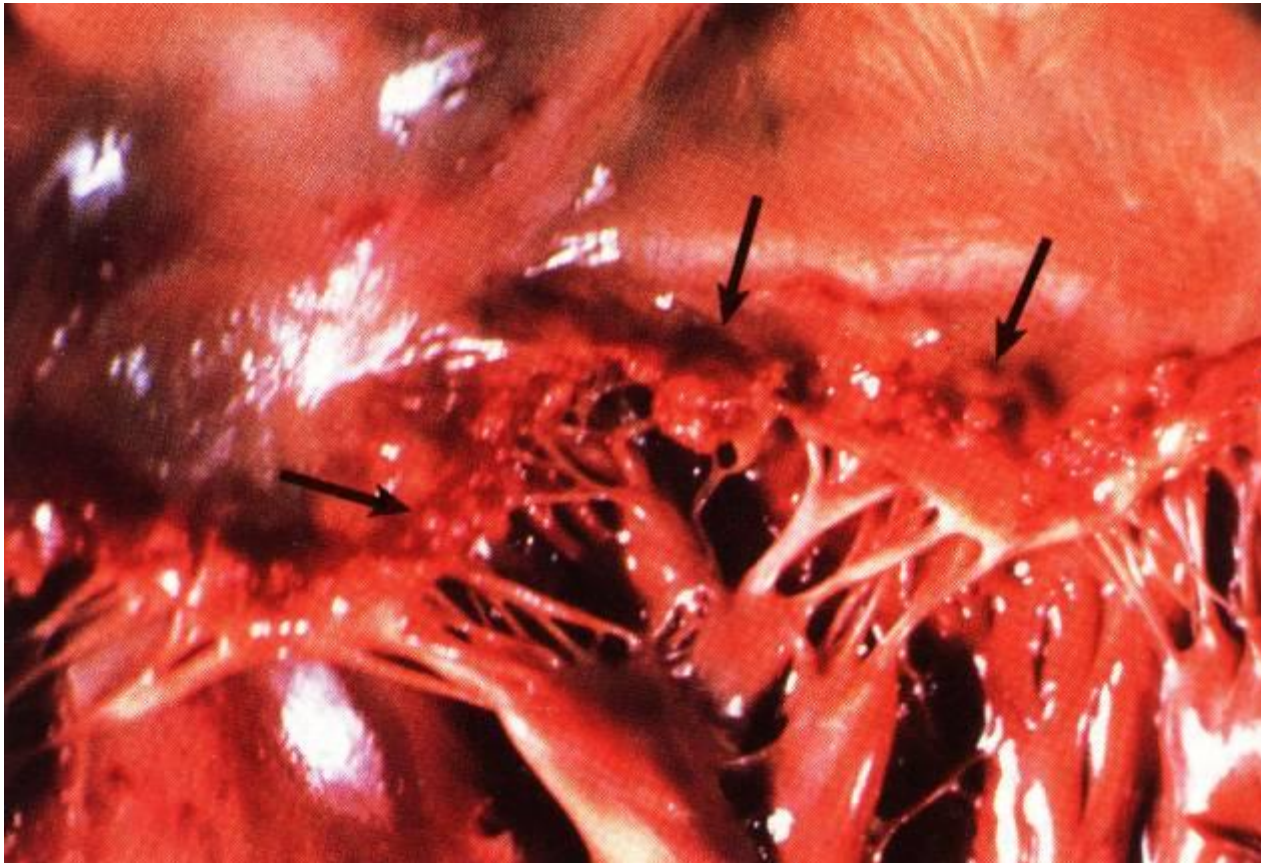
System lupus erythematosus

- *Lupus erythematosus (LE) is chronic polysyndrome disease mostly of young women and girls, which develops on a background the genetic predefined imperfection of immunoregulatory processes. It results to the uncontrolled productions of antibodies to own tissues and their components with development of autoimmune and immunocomplex chronic inflammation.*
- *Morbidity by LE makes 48-50 cases per 100 thousands of population, death rate – 5,8 per 1000 000 (at this 4,7 are women).*

Symptom of “Butterfly”



Endocarditis of Libman-Sacks

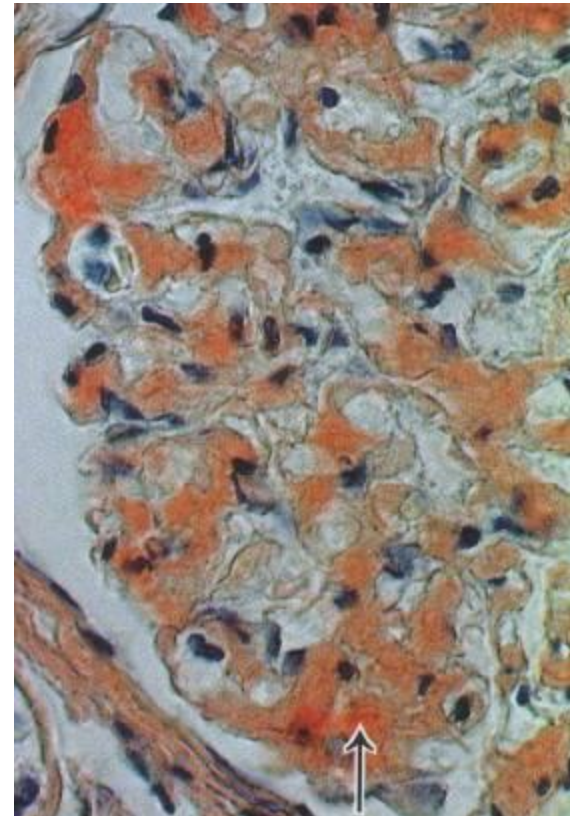




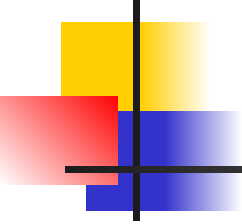
Rheumatoid arthritis

- **Rheumatoid Arthritis (RA)**
(polyarthrititis) is the chronic system disease of connective tissue with the progressive defeat of peripheral (synovial) joints mostly as the type of erosive-destructive polyarthrititis.
- *RA is registered in the all countries of the world and all climate-geographical areas with frequency from 0.6 to 1.3 %. Everywhere women are unwell more frequent (3-4:1).*

Complication of Rheumatoid Arthritis



Rheumatoid Arthritis





Systemic scleroderma (scleriosis)

(Progressive systemic sclerosis)

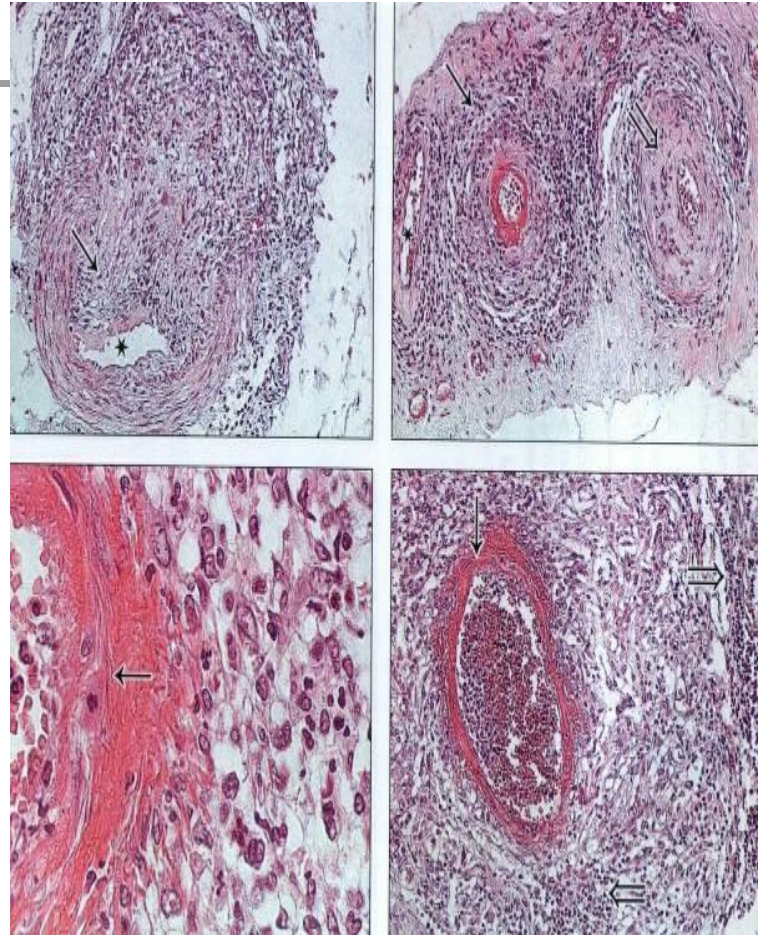
- *Systemic scleroderma is the system disease of connecting tissue and small vessels, which is characterized by the widespread fibrotic-sclerotic changes of skin, stromae of internalss and symptomes of obliterated endocarditic in the form of syndrome of Reino.*
- *Primary morbidity in the USA is known only – 12 accidents on the 1 million populations in a year. The women are unwell in 3-7 times more frequent. Age-dependent peak – 30-60 years.*

Systemic scleroderma



Nodular periarteritis

Nodular periarteritis is a systemic necrotic vasculitis as the type of segmental defeat of small and middle caliber arteries with formation of the aneurysm protrudes. The men of young age are ill mostly, morbidity makes 2-3 on the 1 million populations in the year.



***I thank you for
attention !***