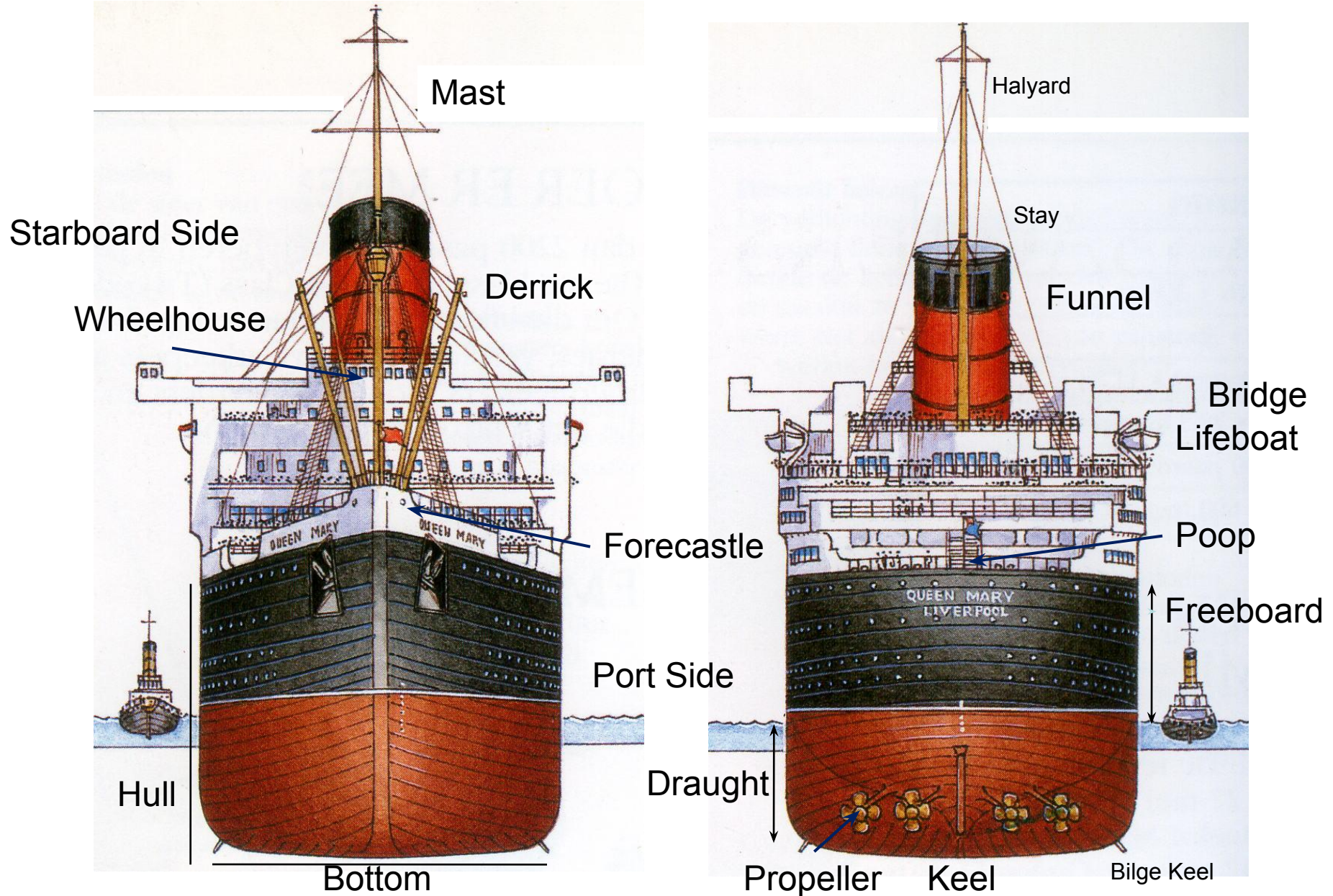
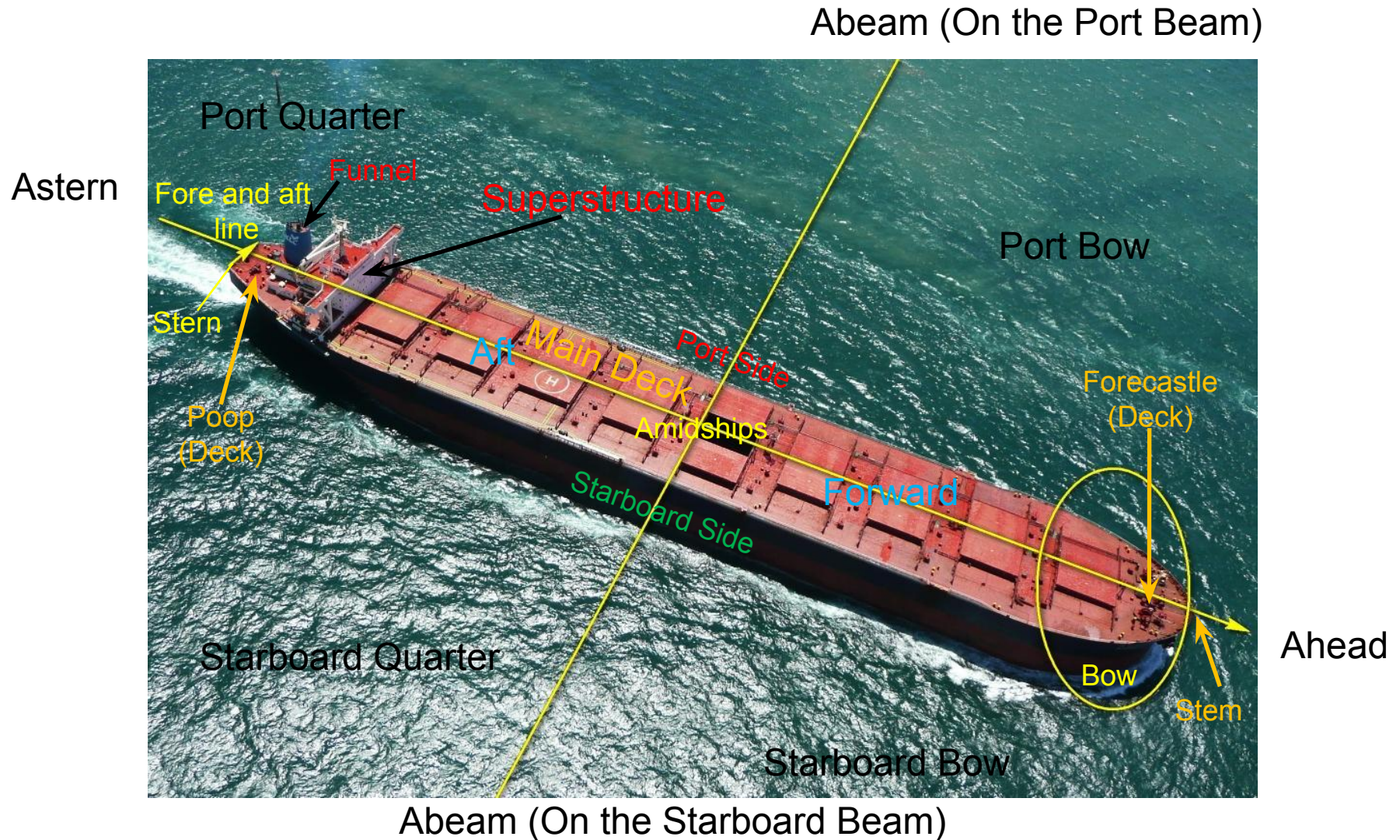


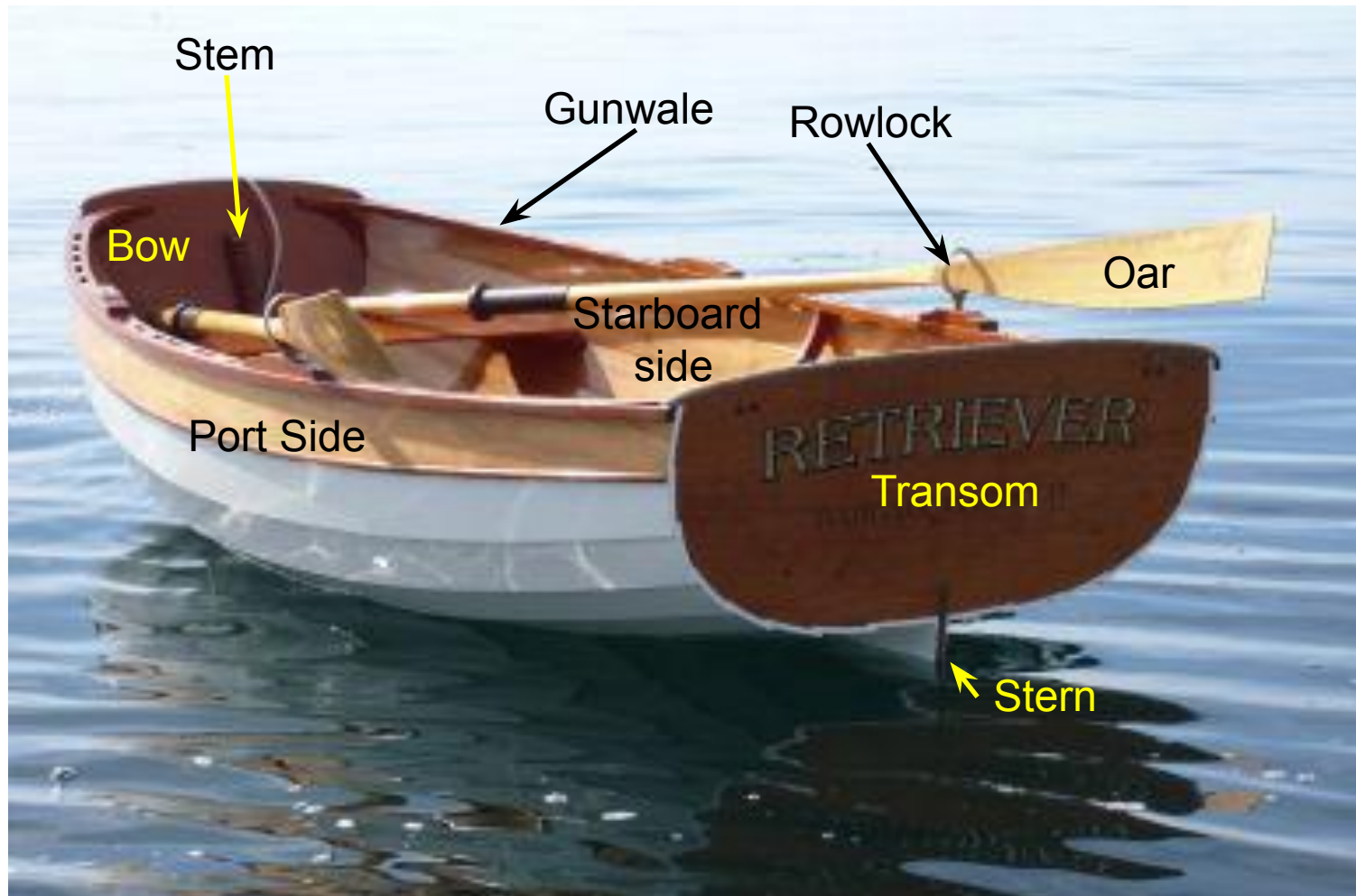
# A Ship's whereabouts – Ship terms



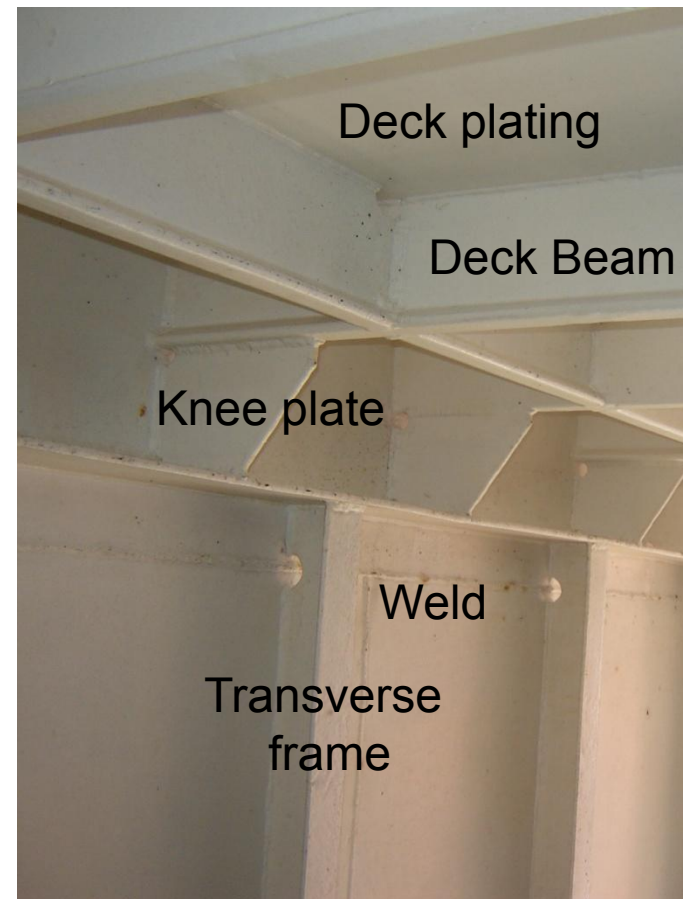
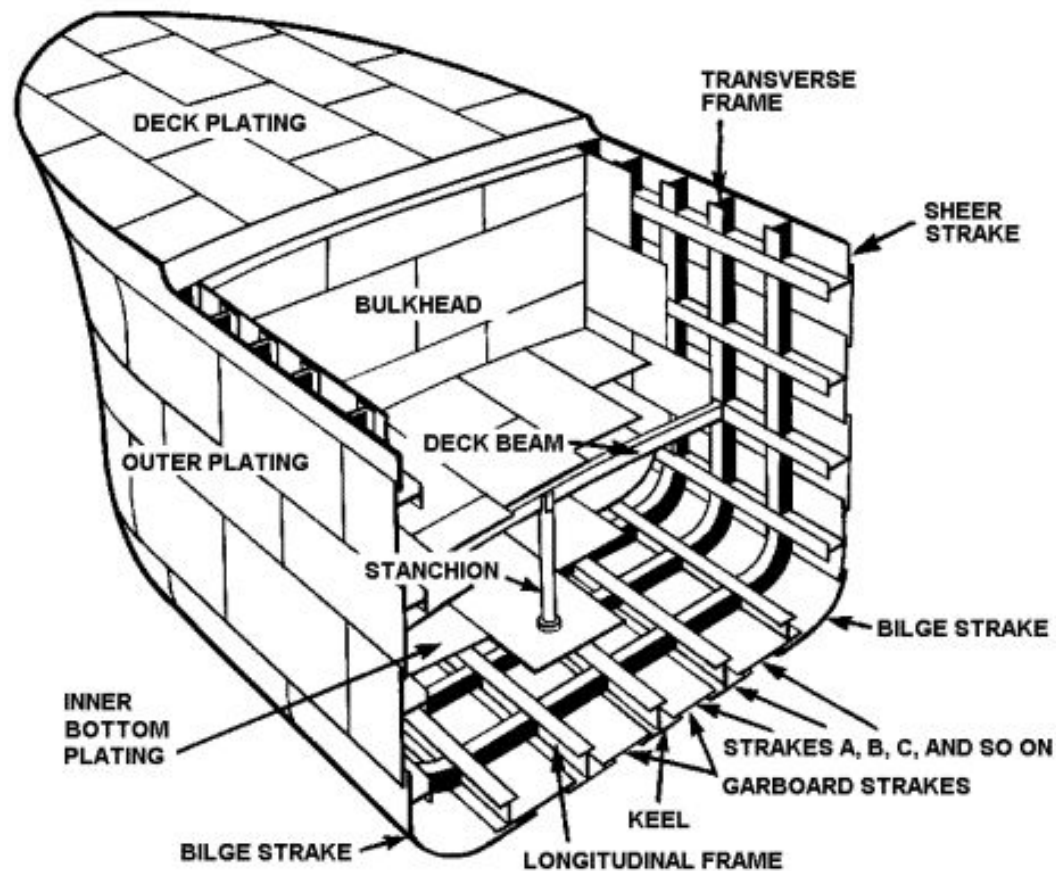
# Part 1 - The basic lay-out of a ship

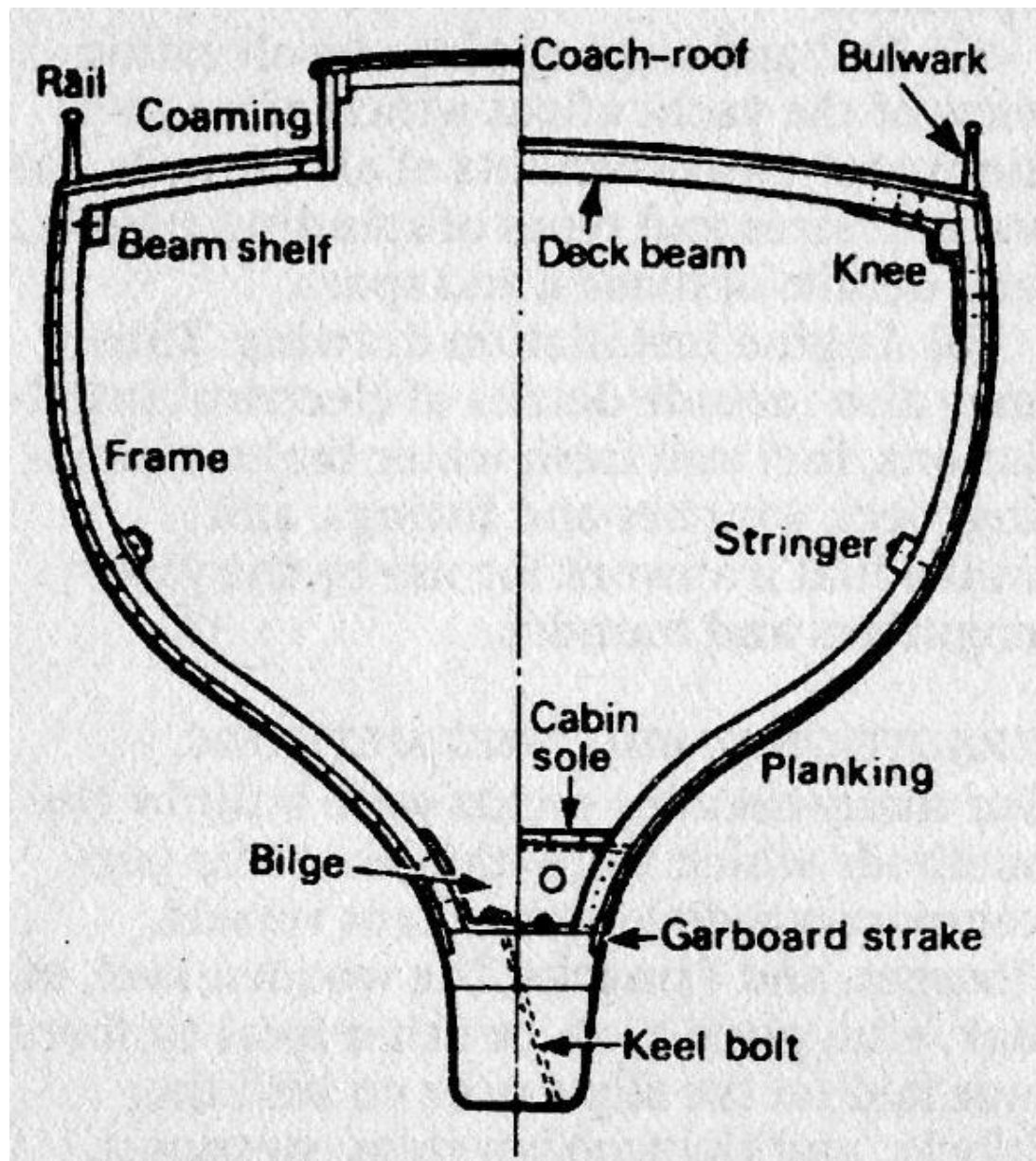


is similar to the lay-out of a boat.



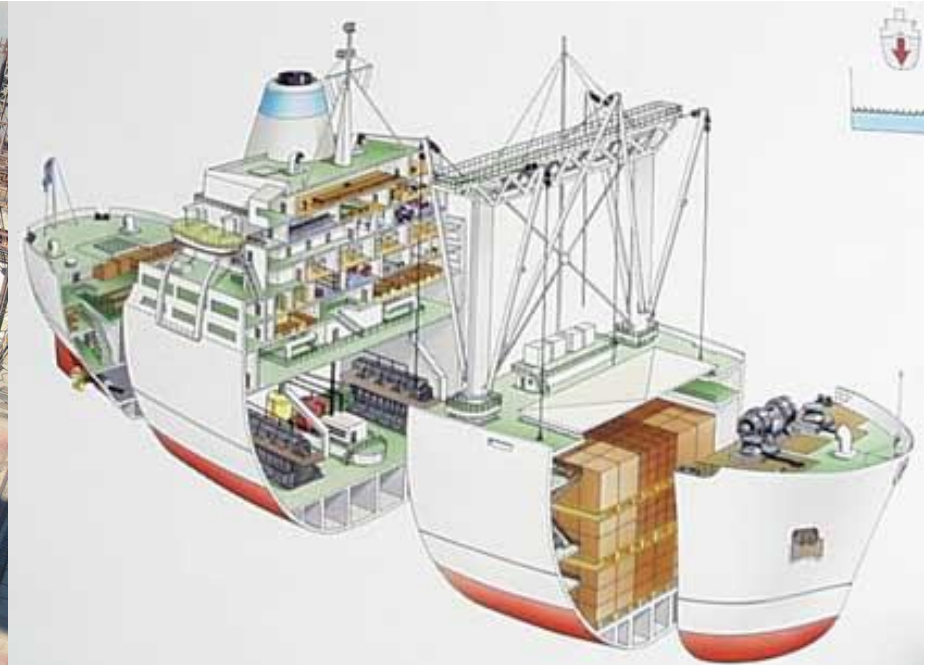
# The construction of welded steel frames and plates in steel ships



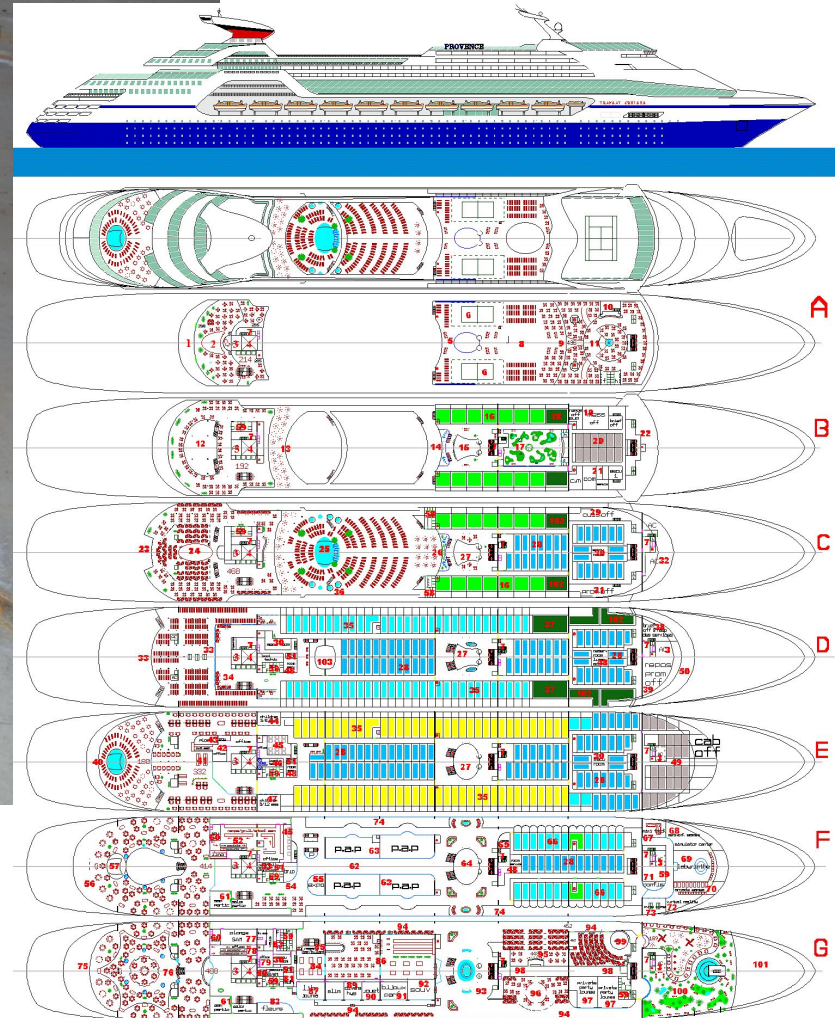


is also similar  
to the planks  
and timbers  
of wooden  
ships.

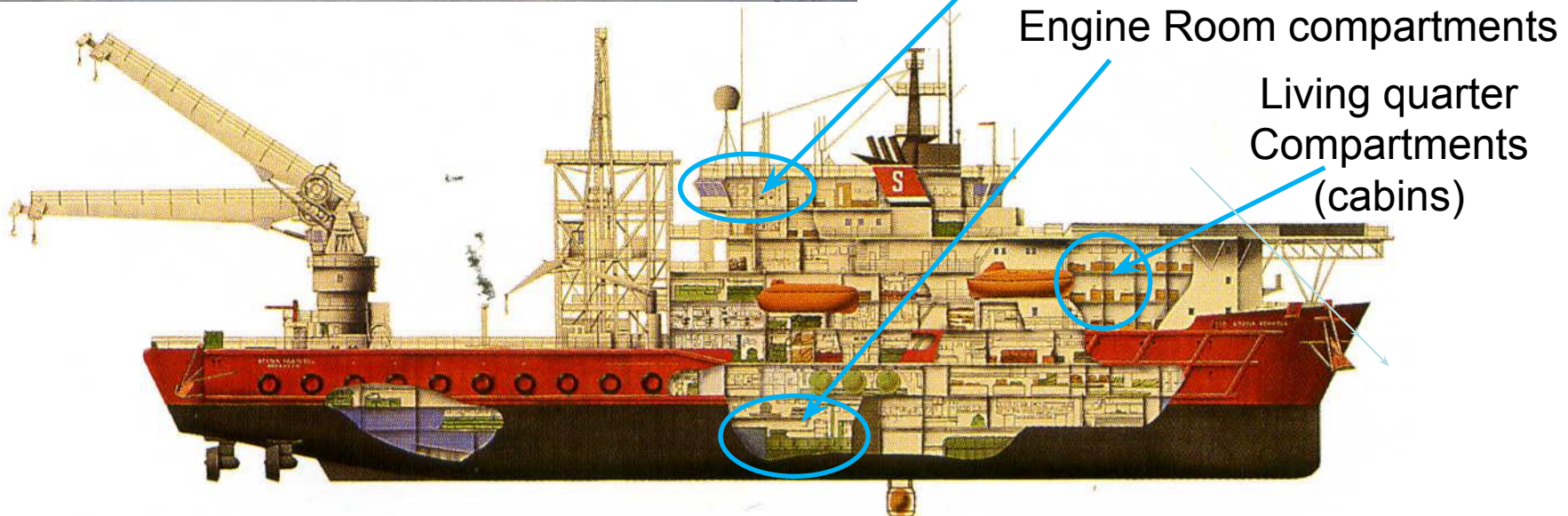
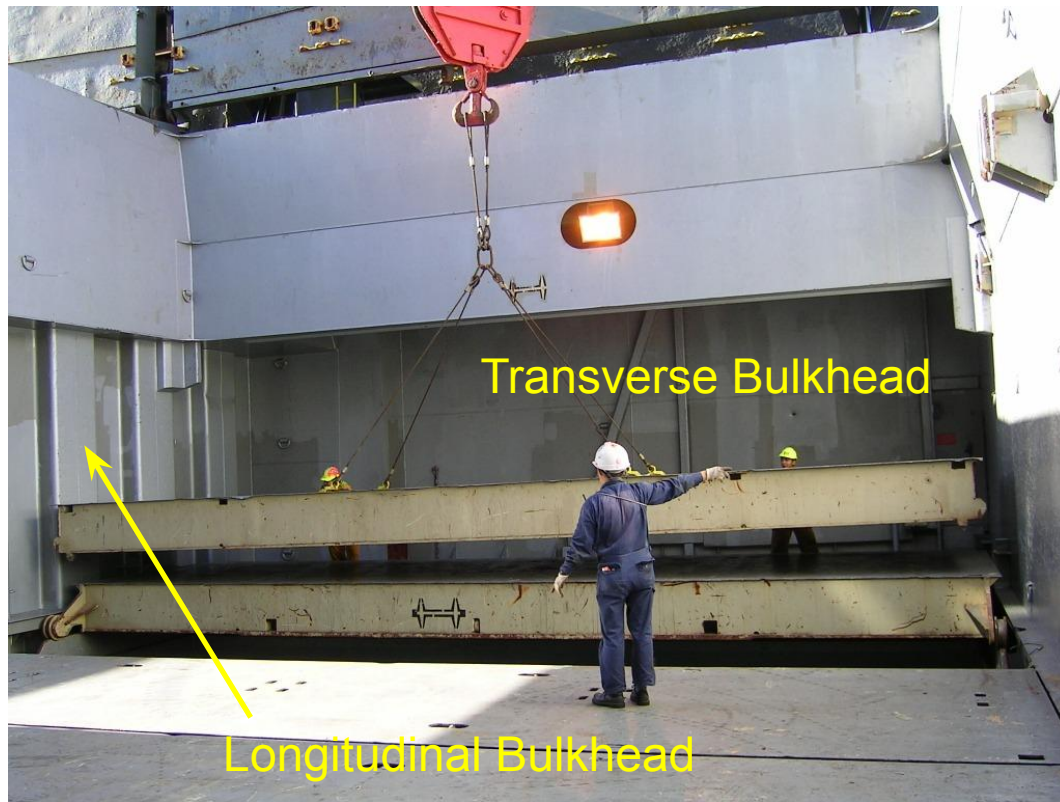
# Modern ships are built in sections



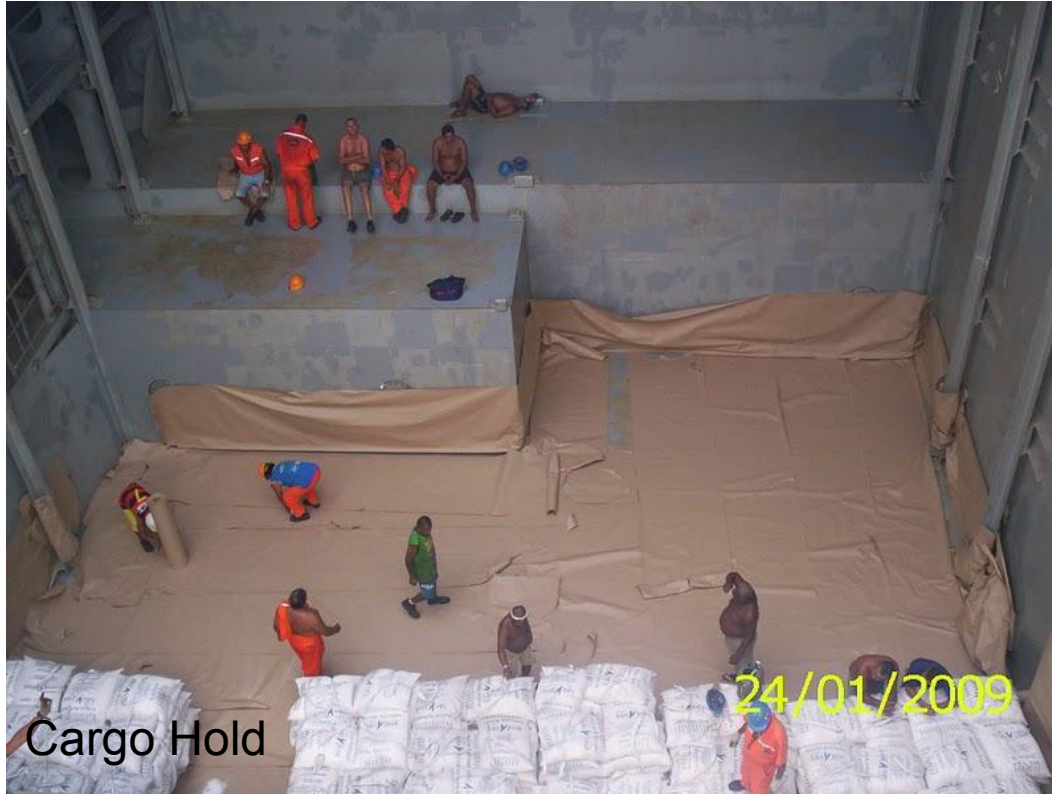
# Decks separate large horizontal compartments (also called decks).



# Bulkheads divide ships (and their decks) into compartments.



# Cargo holds, decks or tanks, are the largest compartments.



Cargo Hold



Hopper



Cargo deck (Vehicle deck)



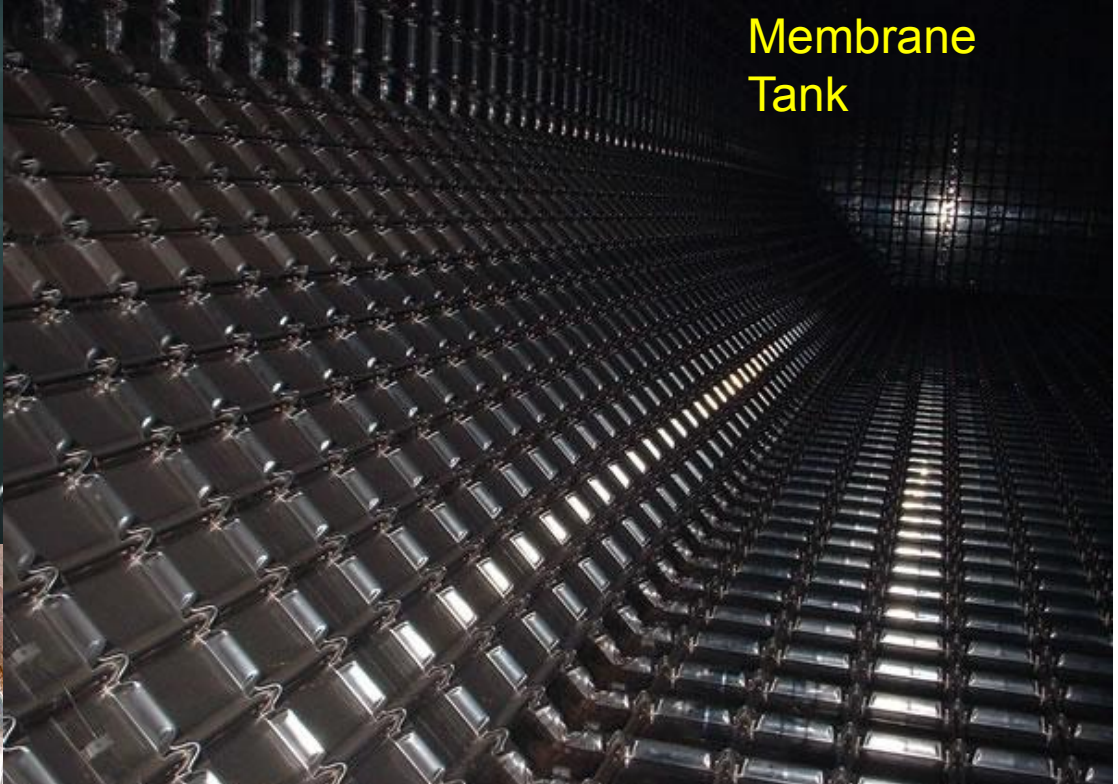
Cargo Tank

# Tanks keep large quantities of Cargo, Ballast and Fuel.

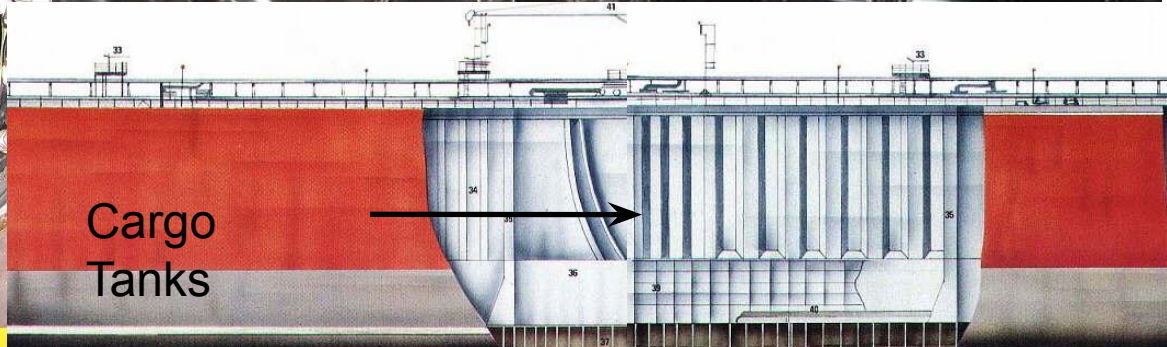
Heavy Fuel Oil (HFO) Tank



Membrane Tank

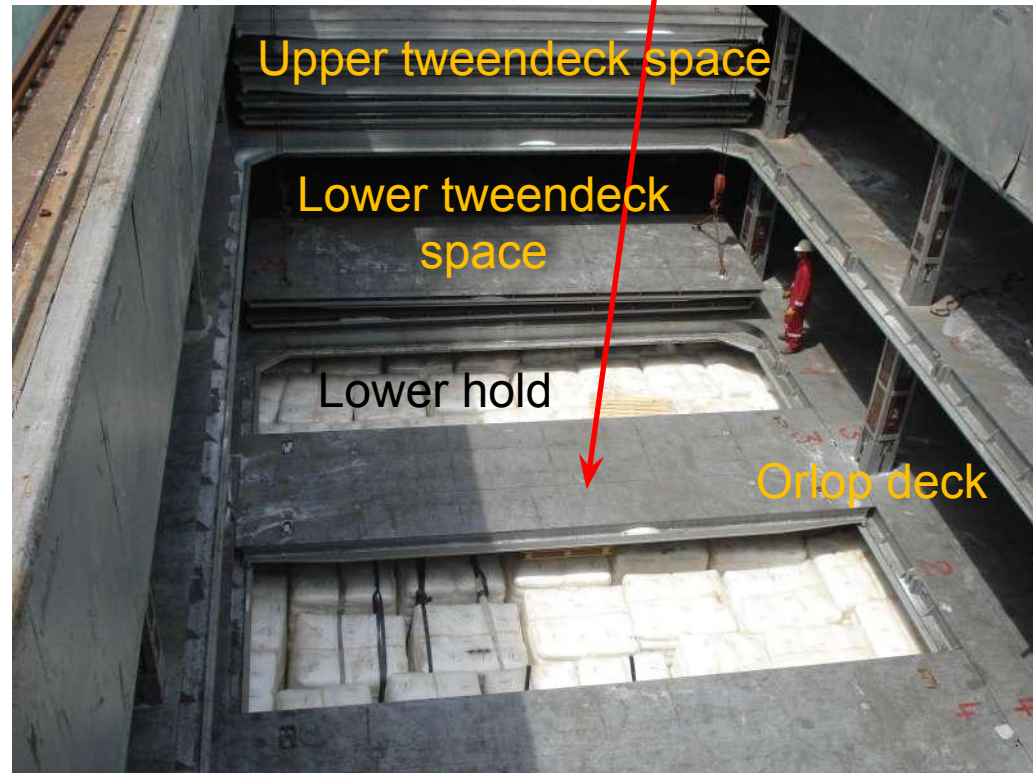
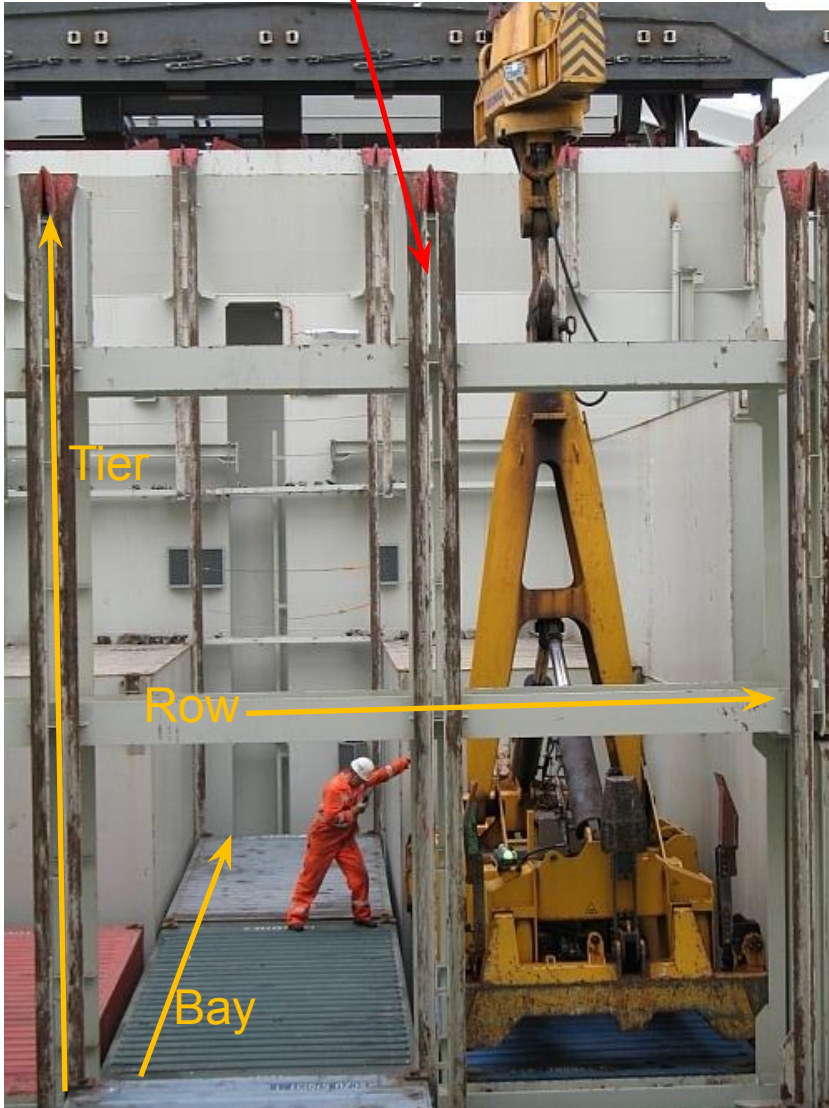


Ballast Water Tank

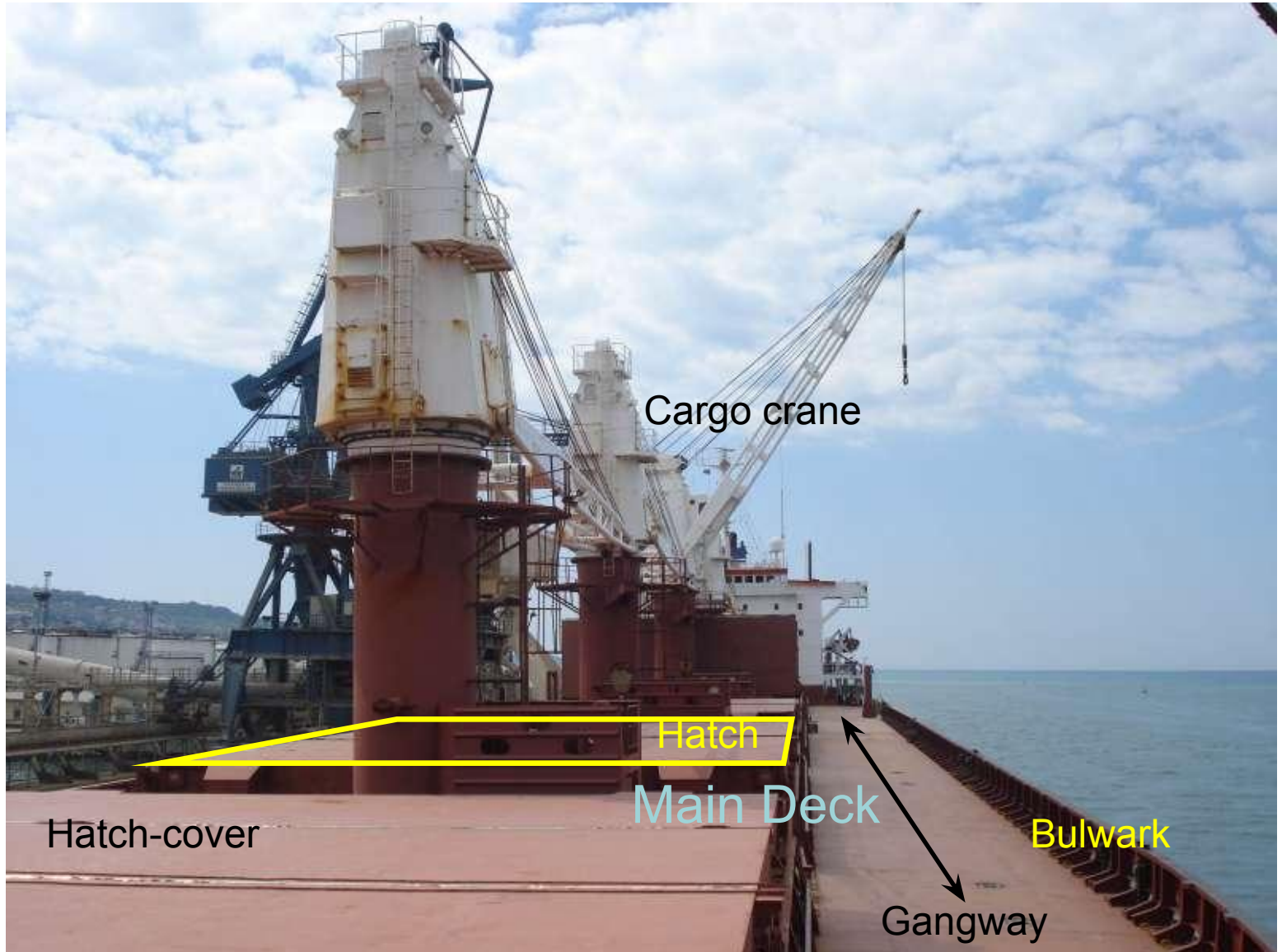


Cargo Tanks

# Some holds are divided by cellguides or tweendecks.



The main deck, the hatches and hatch-covers are situated over the hold.



# Above the main deck, we find superstructures and deck cargo.

Deckhouse and Funnel

Bridge and Accommodation

Mast and Breakwater



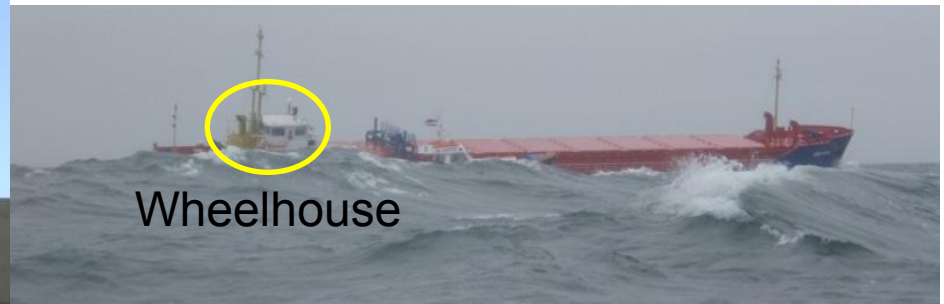
Conning Tower



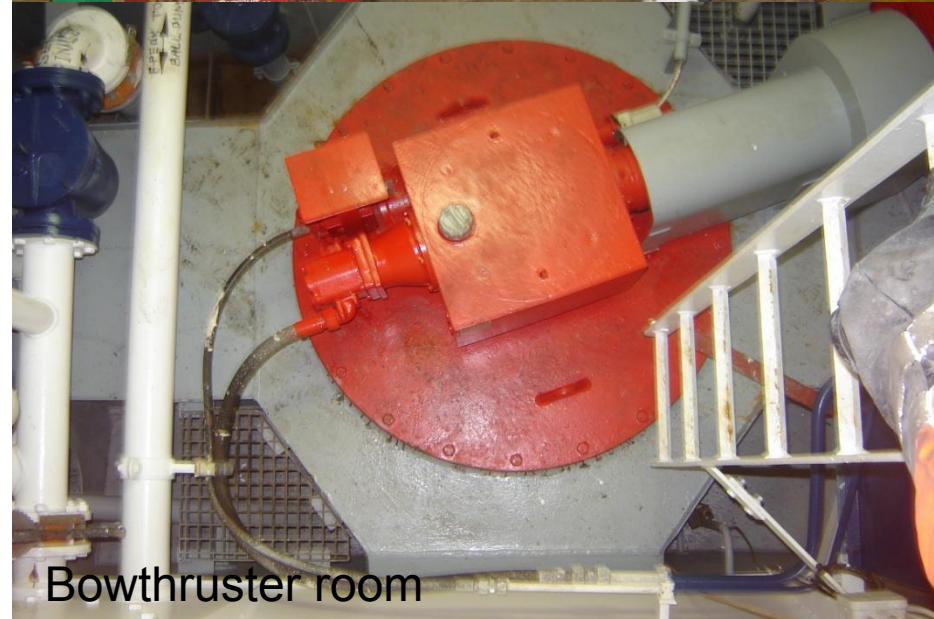
Passenger Decks



Wheelhouse



# The forecastle (usually) contains :



# Access to Deck Spaces



# Machinery spaces include :

Engine Control Room (ECR)



Pump Room



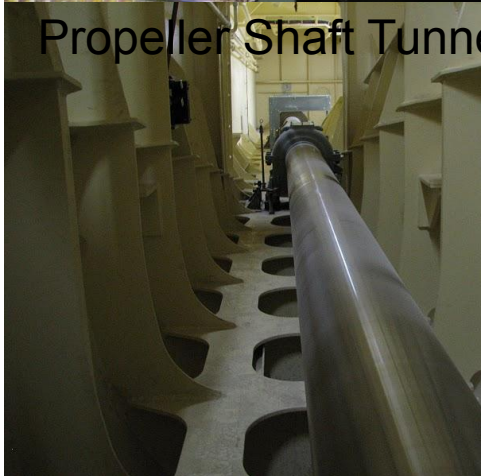
Workshop



Stores



Propeller Shaft Tunnel



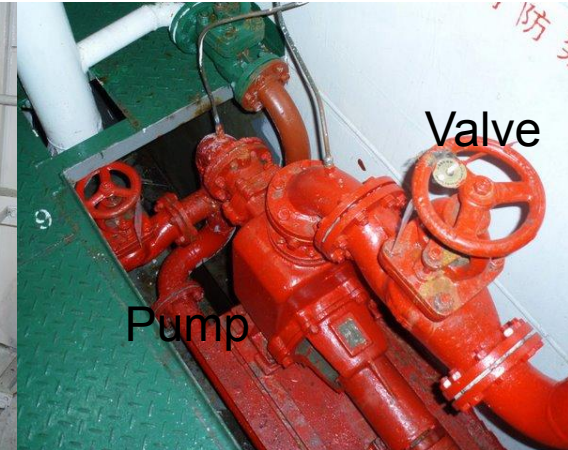
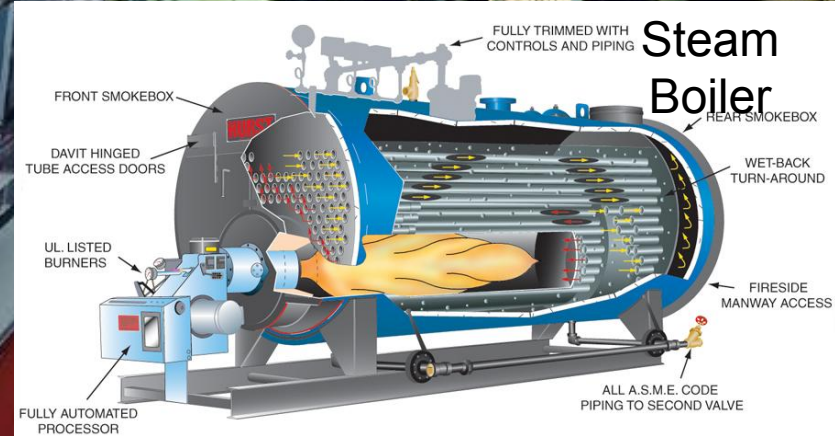
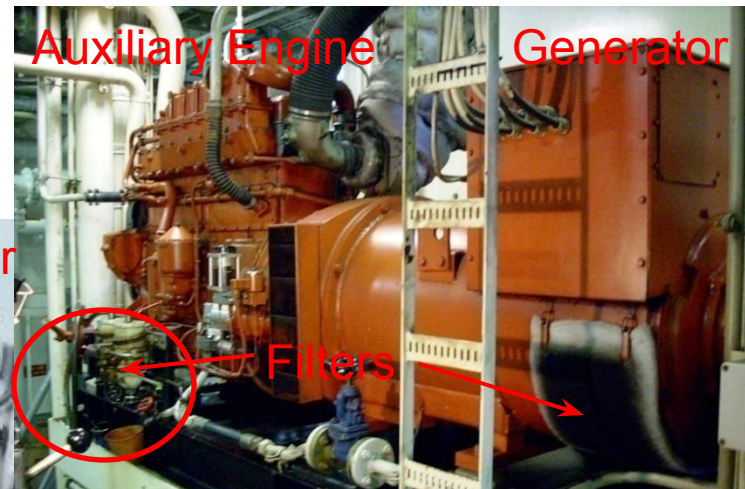
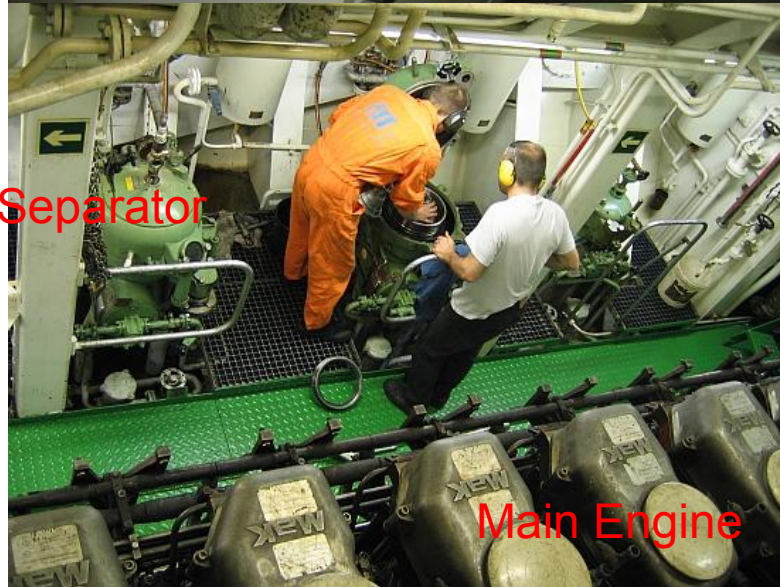
Steering Engine Room



Engine Room (ER)



# Critical Engine room Equipment



# Inside the accommodation, we find :

Cabin



Recreation Room (Gym)



Cold Stores



Mess room



Galley



Hospital (Sick Bay)



Deck Office



Laundry



# Access to accomodation spaces



# In the wheelhouse



# Wheelhouse equipment



# Spaces concerning Safety

Muster station



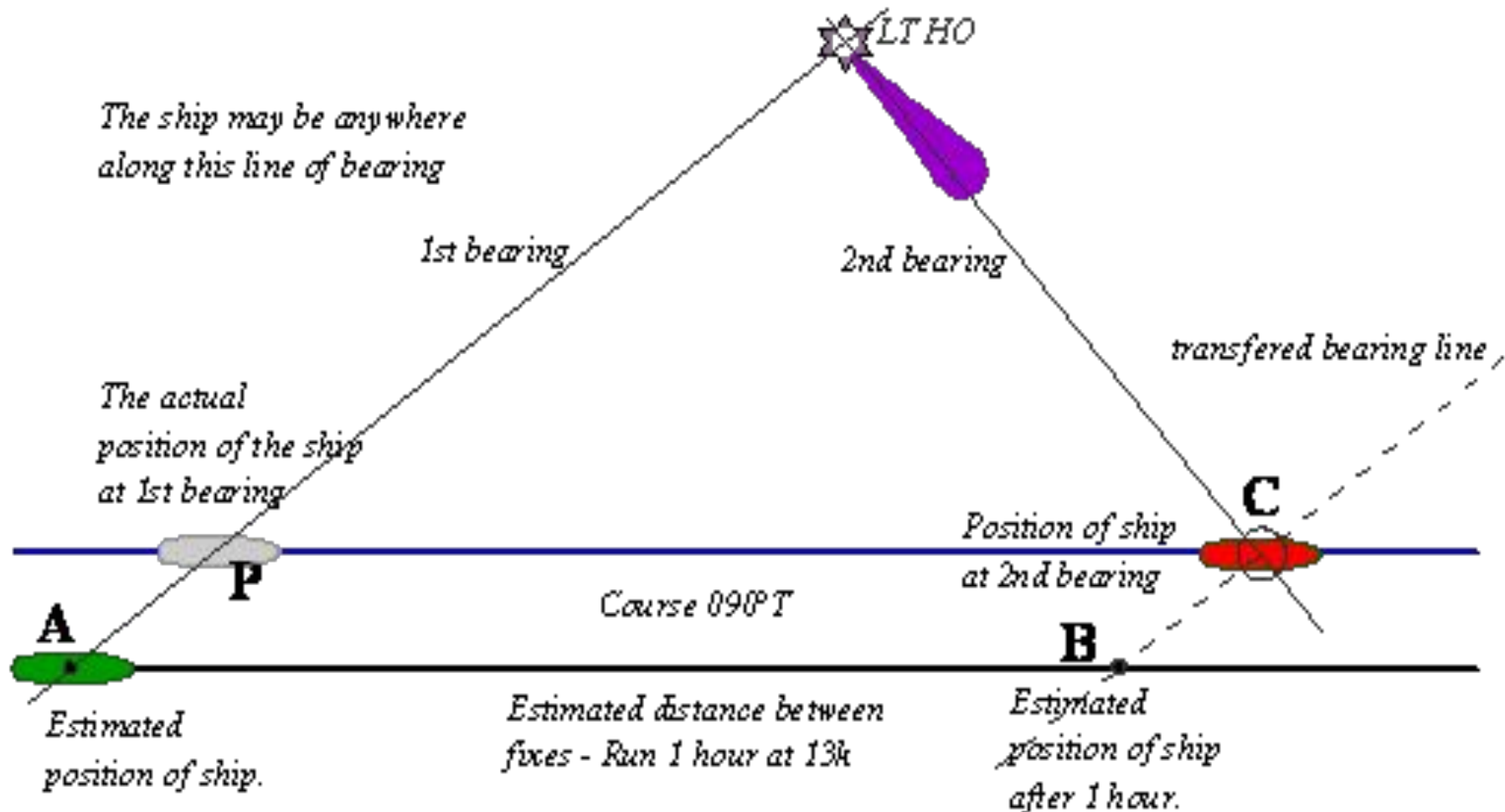
Safety Locker



CO2 Room



# Part 2 – Prepositions and Statives referring to position.



# Point :

to  
→ ×  
1

at  
• ×  
2

(away) from  
× →  
3

away from  
×  
4

2. At the wheel



4. Away from the wheelhouse, at the bridge-wing controls (2)



1. To the bridge



3. Disembarking from the ship



# Line :

on (to)



1

on



2

off



3

off



4

across, over

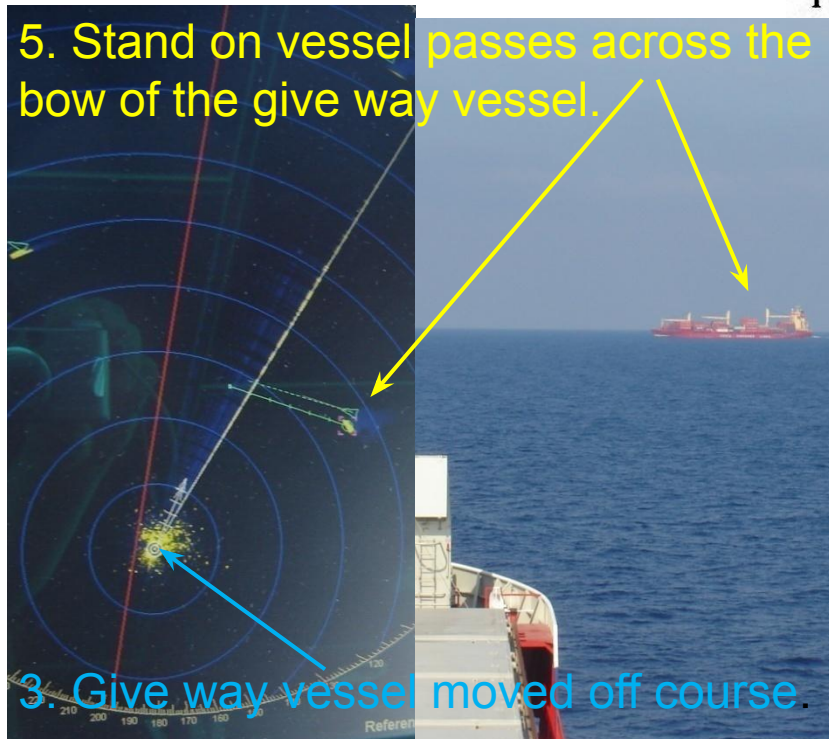


5

along



6



2. Vessel on reciprocal course

2. Vessels on parallel courses

4. Bunkering operations off the breakwater.



# Surface :

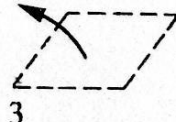
on (to)



on



off

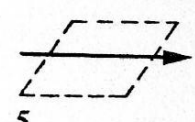


off

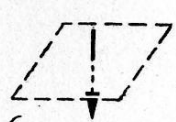


across,

over



through



1. Loading cargo onto the deck



2. Cargo (already) on deck

3. The AB is chipping the sweepings off the tanktop!



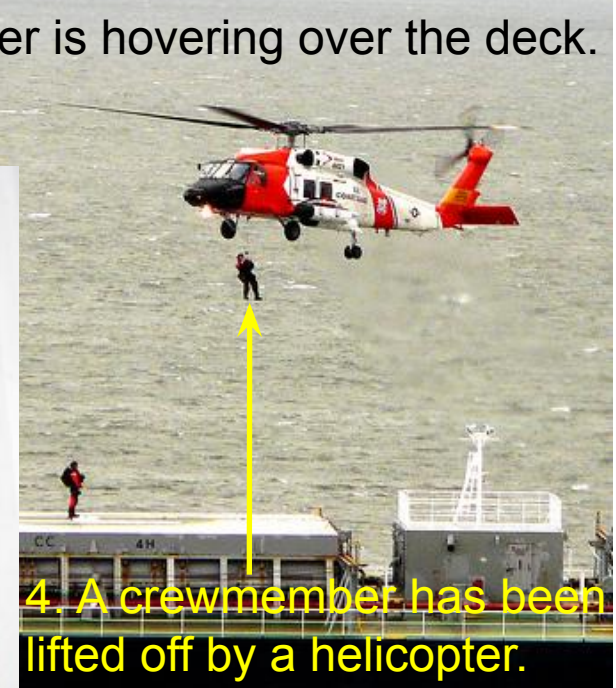
6. The stores are lowered through the hatch.



5. Ferries across the Dover Strait



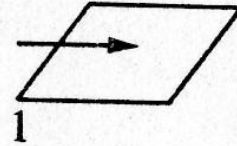
5. A helicopter is hovering over the deck.



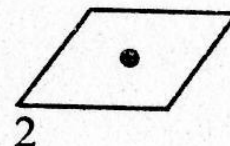
4. A crewmember has been lifted off by a helicopter.

# Area :

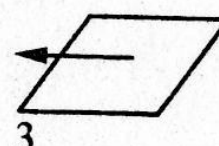
*in (to)*



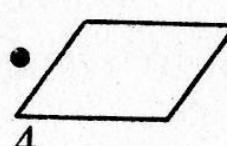
*in*



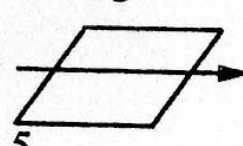
*out of*



*out of*



*through*



3. Ships that are out of the port,  
2. in the approaches.



3. Proceeding out of the port  
5. Through the port entrance

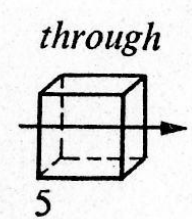
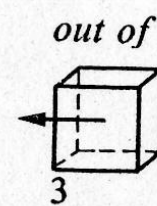
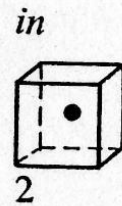
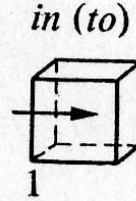


1. Proceeding into the port.

2. Moored in the port entrance.



# Volume :

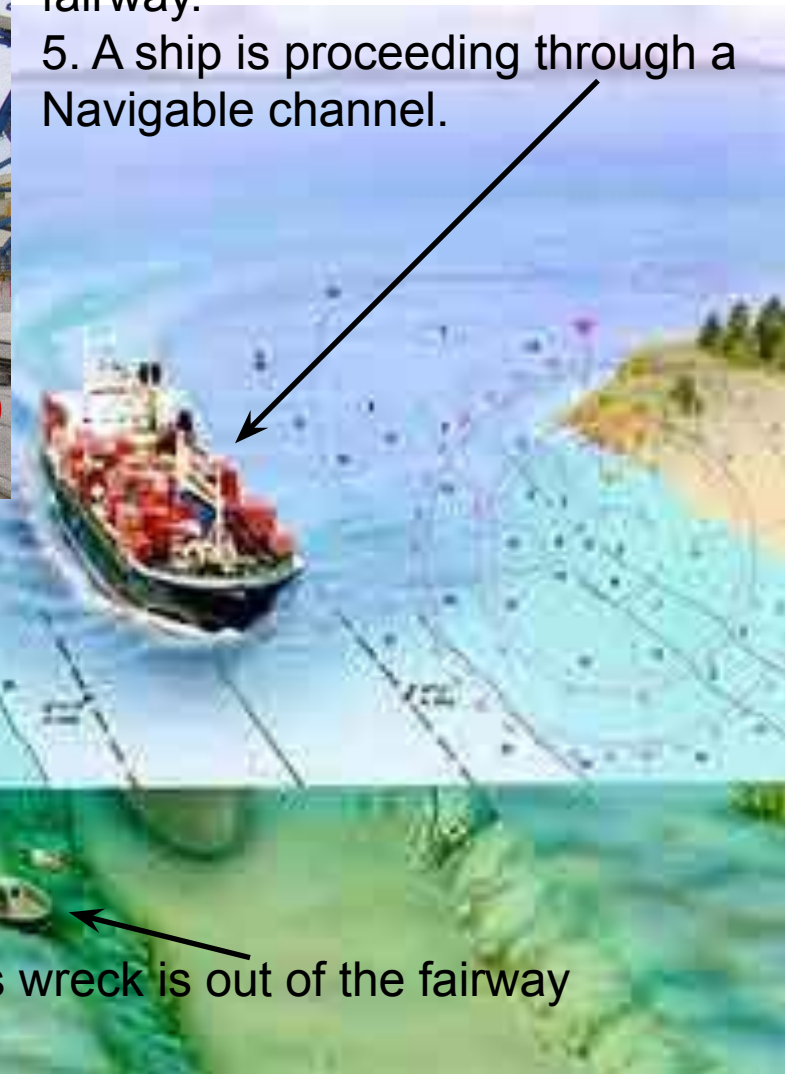


The ship's waste is separated into (1) different containers. In (2) port, the waste is taken out of (3) the containers and landed ashore.



2. A ship is proceeding in the fairway.

5. A ship is proceeding through a Navigable channel.



4. This wreck is out of the fairway

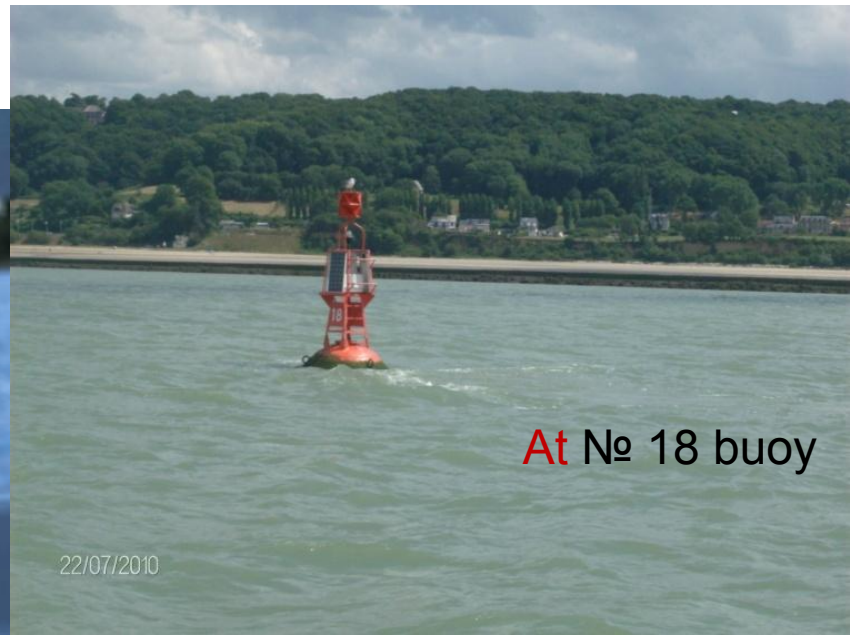
# Relative positions :

Bearing Tarifa Lighthouse 353 degrees =  
Bearing **from** Tarifa Lighthouse 173 degrees



Taking a bearing **across** a magnetic compass

**Abeam** of Svenska Bjoern  
Lighthouse



**At** № 18 buoy

22/07/2010

**Off** Gibraltar



**On** the leading line

# Statives

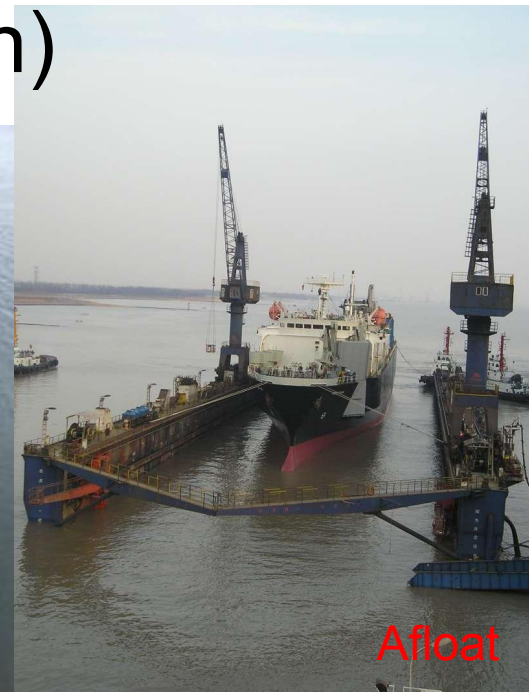
- Modifiers (Adjectives/Adverbs) that indicate a state i.e. a condition of something
- Formally : prefix a- + noun or verb
- In Nautical English a number of statives are used to express direction which in their turn refer to position (a relative position)



Ashore



Aground



Afloat

# Statives – Direction = Position

Berths along both sides of the canal

Barge tow further ahead, astern of the green tanker

Barge tow ahead and across our bow, abeam of the jetty

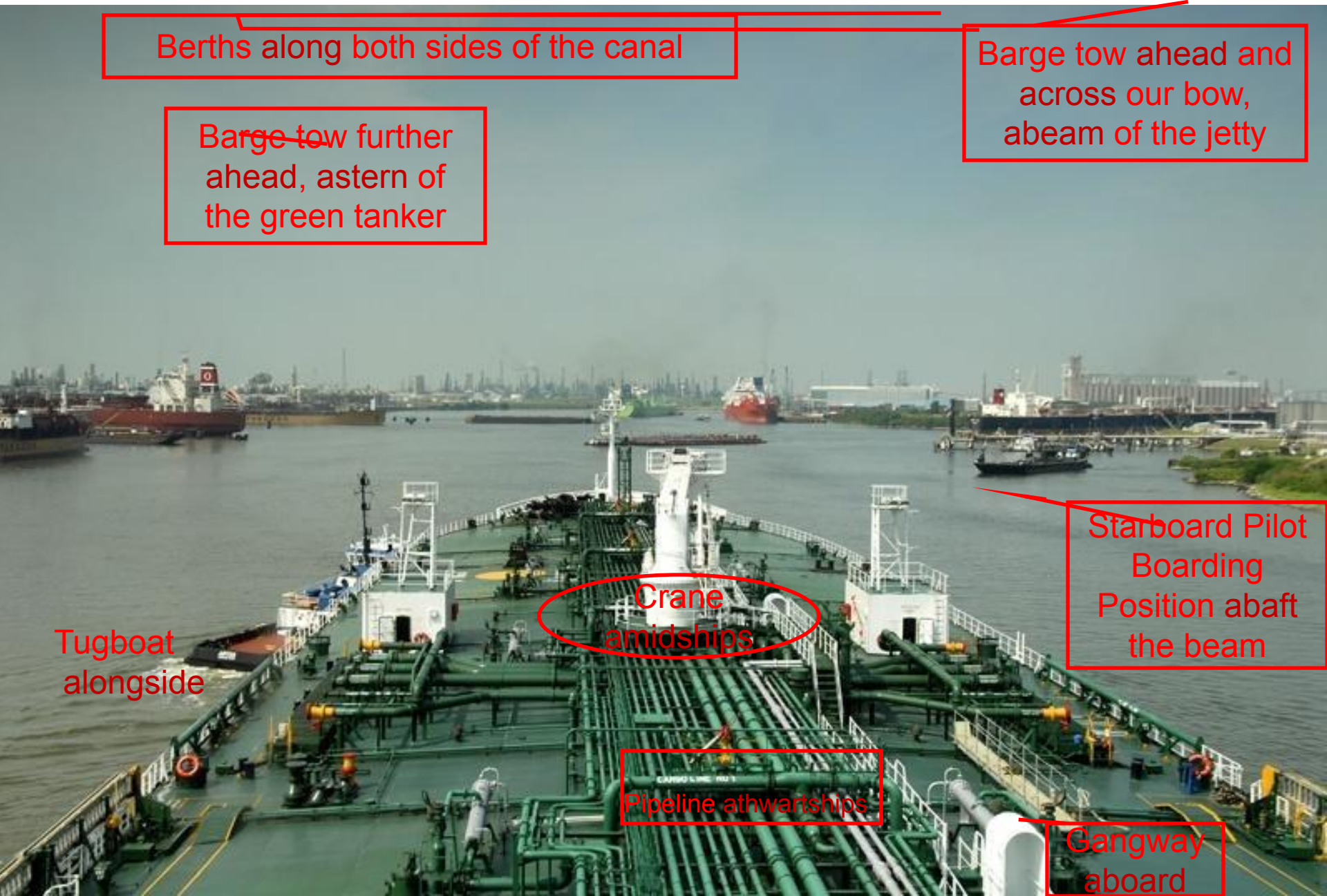
Tugboat alongside

Crane amidships

Starboard Pilot Boarding Position abaft the beam

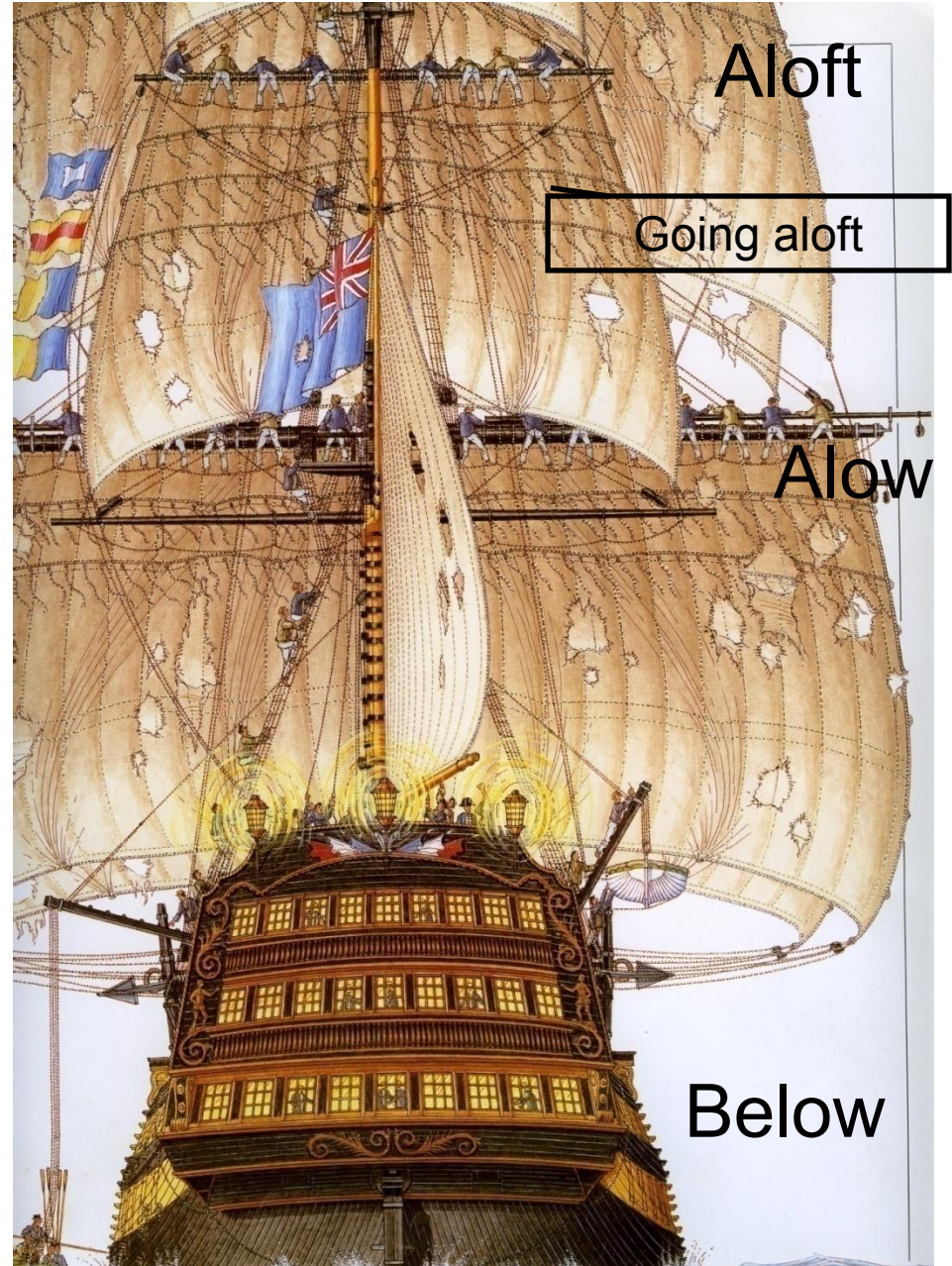
Pipeline athwartships

Gangway aboard



# Some statives express opposite directions :

- Aport



# Some basic expressions :

At Anchor



On board



Aboard / On the Boatswain's chair

Ashore

# Famous Proverbs :

He is all **at** sea.

*(He is at a loss and  
doesn't know what to do.)*



We are all **in** the same boat.

*(We face the same problems  
and have to solve them together.)*



# Thank you for your attention !

