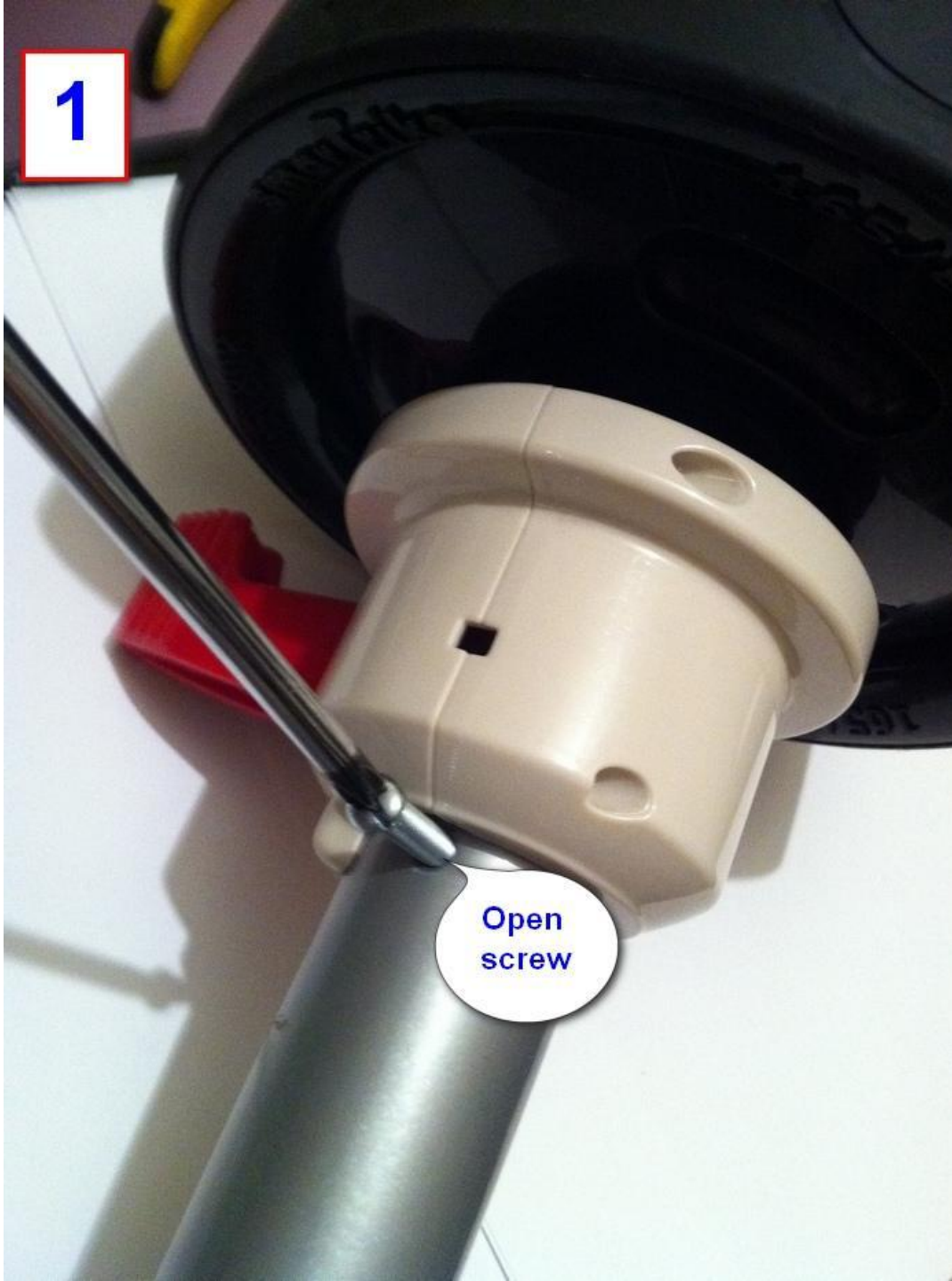



Pin for side brake – replacement instructions

1

Open
screw



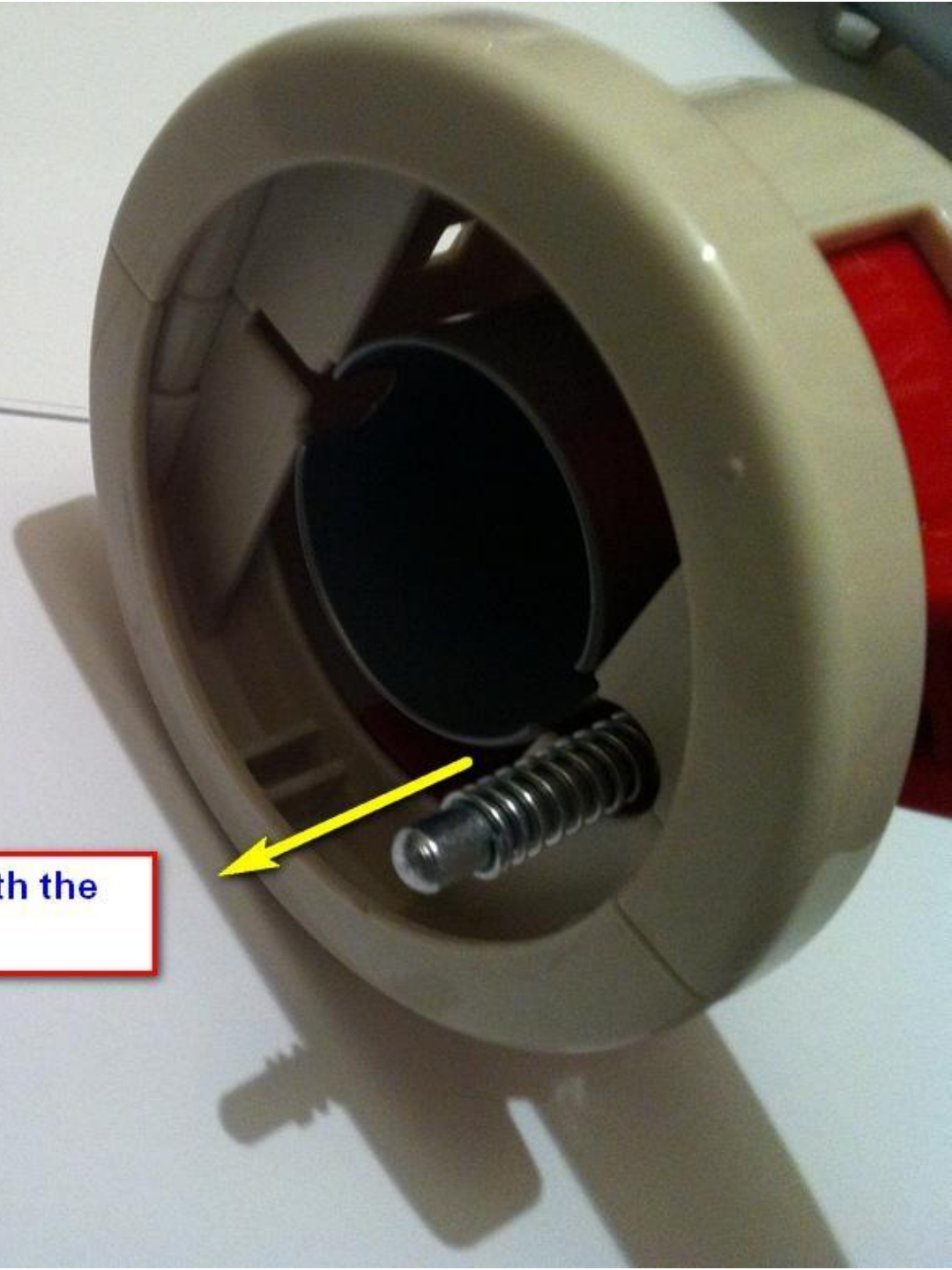
2



**Pull out the
wheel**

3

**Pull out the pin with the
spring**



4



Replace the pin

5

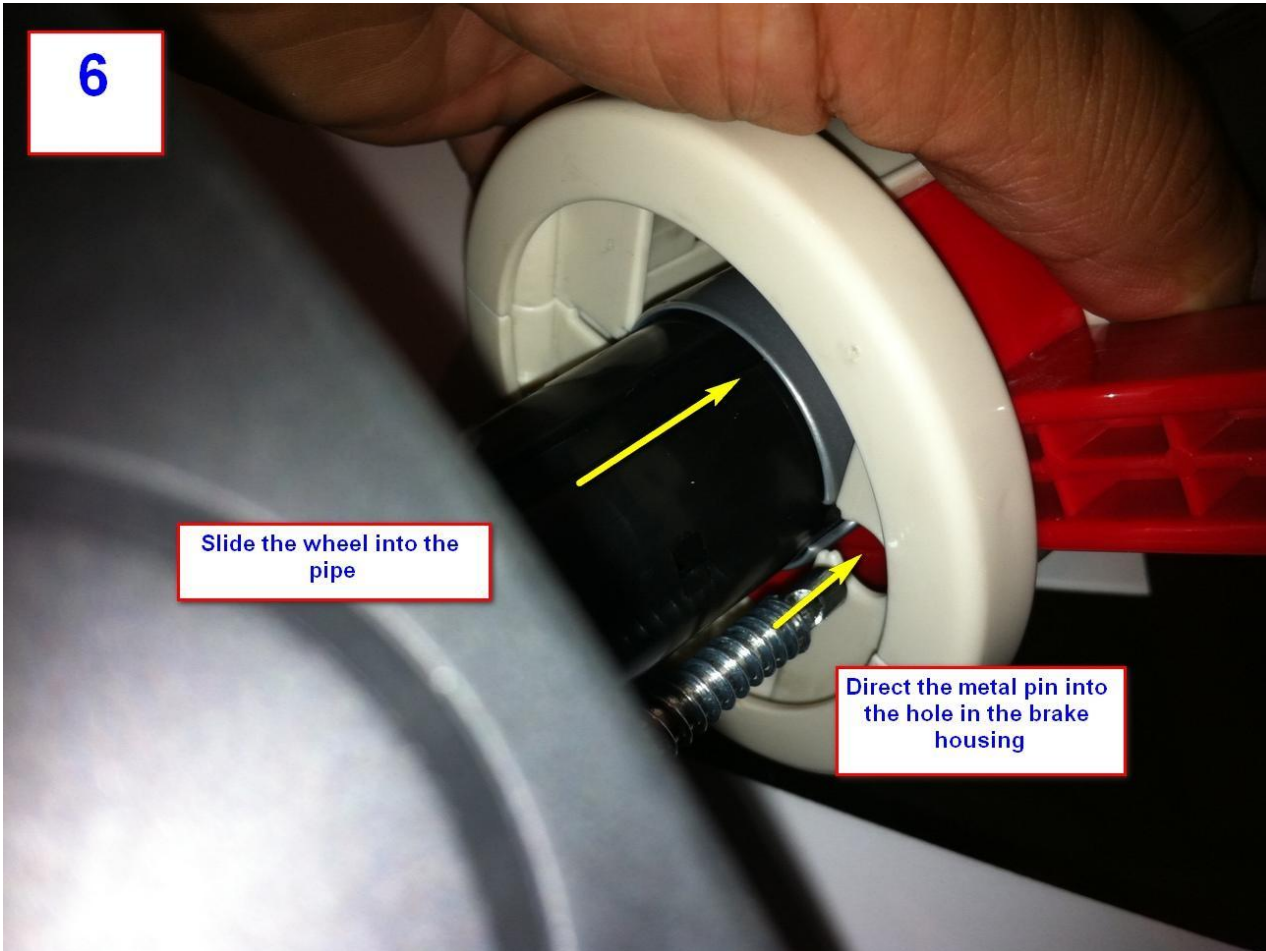
Slide the pin with the spring into the sleeve on the wheel holder



6

Slide the wheel into the pipe

Direct the metal pin into the hole in the brake housing



7



close back the screw

Pull the lever up and down few times and check if it stopes the wheel from turning