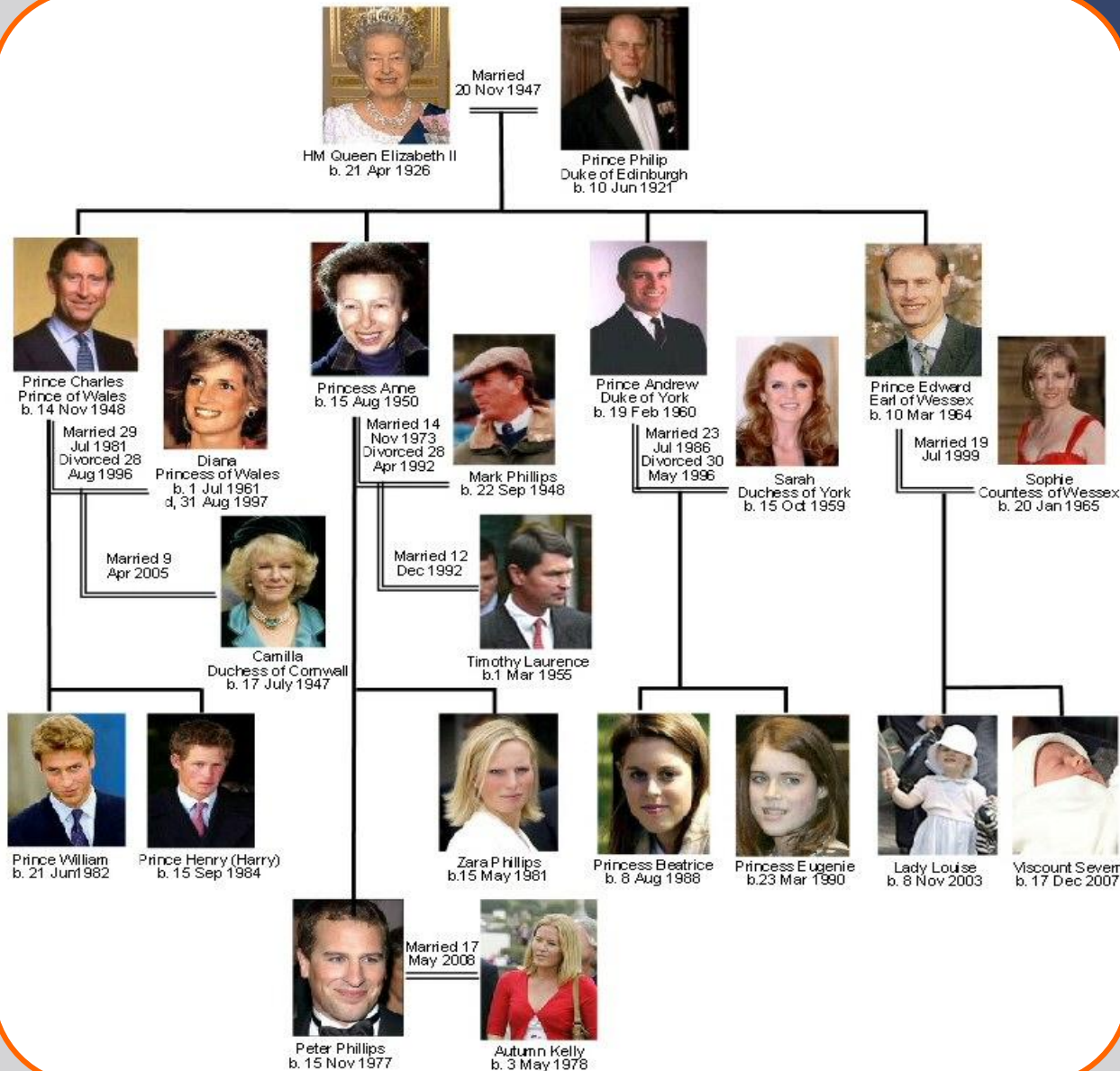




FAMOUS PEOPLE OF GREAT BRITAIN
ELIZABETH II :
THE BRIGHT MONARCH OF HER EPOCH

ROYAL FAMILY TREE



QUEEN
ELIZABETH II

PRINCE PHILIP

PRINCE CHARLES

PRINCE ANDREW

PRINCE EDWARD

PRINCESS ANNE

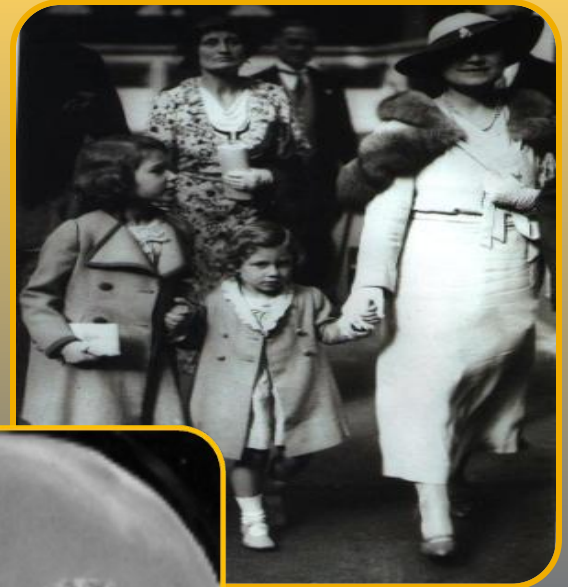




Queen Elizabeth II was born Princess Elizabeth Alexandra Mary on April 21, 1926, in London, to Prince Albert, Duke of York (later King George VI), and Elizabeth Bowes-Lyon.

Queen's parents





Princess Elizabeth's early years were spent at 145 Piccadilly, the London house taken by her parents shortly after her birth, and at White Lodge in Richmond Park. She also spent time at the country homes of her paternal grandparents, King George V and Queen Mary, and her mother's parents, the Earl and Countess of Strathmore.



29.8.

H. R. H. PRINCESS ELIZABETH

READER POSTCARD



PHOTOGRAPH BY - BARNES

H.M. QUEEN ELIZABETH II.



H.M. QUEEN ELIZABETH II.



Elizabeth R. 1952





Her Majesty Queen Elizabeth II



Queen Elizabeth was still a Princess when she married Prince Philip of Greece and Denmark in November 1947.



Queen Elizabeth II and her husband





They have four children: Charles, Anne, Andrew and Edward. The couple also have eight grandchildren: Peter and Zara Phillips (b.1977 and 1981); The Duke of Cambridge and Prince Harry (b.1982 and 1984); Princess Beatrice of York and Princess Eugenie of York (b.1988 and 1990); and The Lady Louise Windsor and James, Viscount Severn (b.2003 and 2007).





Queen Elizabeth II of Great Britain was crowned in 1953. Her 60 years on the throne was celebrated in June 2012, with the Diamond Jubilee.

CORONATION OF QUEEN ELIZABETH II





As a constitutional monarch, Elizabeth does not express her personal political opinions publicly. She has maintained this discipline throughout her reign, doing little in public to reveal what they might be, and so her political views are not known. However, she is believed to hold centre, even slightly left of centre views. She was seen as closer to Harold Wilson than Edward Heath and was certainly closer to Tony Blair than Margaret Thatcher. She also enjoys especially close relations with Ireland, having expressed support for the Good Friday Agreement which eventually brought peace to Northern Ireland.





Personal Quotes

My husband has quite simply been my strength and stay all these years, and I owe him a debt greater than he would ever claim.

Grief is the price we pay for love.

Like all best families, we have our share of eccentricities, of impetuous and wayward youngsters and of family disagreements.









Queen Elizabeth is now the second longest serving British monarch and has presided over half a century of continual change both within the Royal Family, Britain and the Commonwealth.





Prince George of Cambridge

Full Name: George Alexander Louis Father: Prince William, Duke of Cambridge Mother: Catherine, Duchess of Cambridge Relation to Elizabeth II: Great grandson Born: July 22, 2013 at St Mary's Hospital, Paddington, London Current Age: 1 year, 4 months and 24 days Prince George is the son of Prince William and Catherine Duchess of Cambridge. He was born on 22 July 2013 and is the first great grandson and third great grandchild of Queen Elizabeth II.



Sources of information

Campbell, Judith. Queen Elizabeth. New York: Crown Publishers, 1979.

Lacey, Robert. Monarch: The Life and Reign of Elizabeth II. New York: Free Press, 2012.

Longford, Elizabeth. The Queen: The Life of Elizabeth II. New York: Knopf, 2013.

Shawcross, William. Queen and Country: The Fifty-Year Reign of Elizabeth II. New York: Simon and Schuster, 2012.