

**Fashion of
last years**

Men's style

- The male costume of the first half century consisted of a shirt, coat and top coat, which, unlike the French, was not surrounded. On his feet were sewn obtyazhnoe tights and soft wide pants sborchatye.

- Мужской костюм первой половины XVI века состоял из рубашки, камзола и верхнего кафтана, который, в отличие от



Men's style

- In the middle of the XVI century in England invented the knitting machine. Since that time, gradually comes to fashion knit tights. In the first half-century short hair sheared. The characteristic hat was the ornate takes.
- *В середине XVI века в Англии изобрели вязальную машину. С этого времени постепенно в моду входит вязаное трико. Волосы коротко стригли.*



Men's style

- In the second half of the XVI century exterior splendor of the court of Queen Elizabeth contributed to the suit. Trendy tunic, trousers sewn from fabric pouffe bright colors, decorated with embroidered border, precious stones, and the end of the century - lace. Colette is shaped like a Spanish-French: had narrow sleeves, wings at the shoulders and collar.
- *Во второй половине XVI века внешняя пышность двора королевы Елизаветы повлияла и на мужской костюм. Модный колет,*



Women's style



- Women's costume of the first half of the XVI century was shaped vertyugada: tight bodice that hides the shape of the breast, chest in the shape of a square; sleeve, narrow of shoulder to elbow, with a huge, wide funnel-shaped cuff. Sometimes, more often among the bourgeoisie, were marlot - swinging from his neck dress, which had no waist.
- Женский костюм первой половины XVI века имел форму вертюгада: тугий лиф, скрывающий форму груди

Women's style



- In the second half-century aristocratic luxury fashions reaches its climax. The costume of this time is extremely narrow bodice with a cape that extended to the whole abdomen, giving the impression of an excessively long waist. The skirt is slightly shortened and severely stretched in the sides. In ceremonial dress her stretched on a frame, on which lay around his waist "ploenoe the wheel."

Women's style



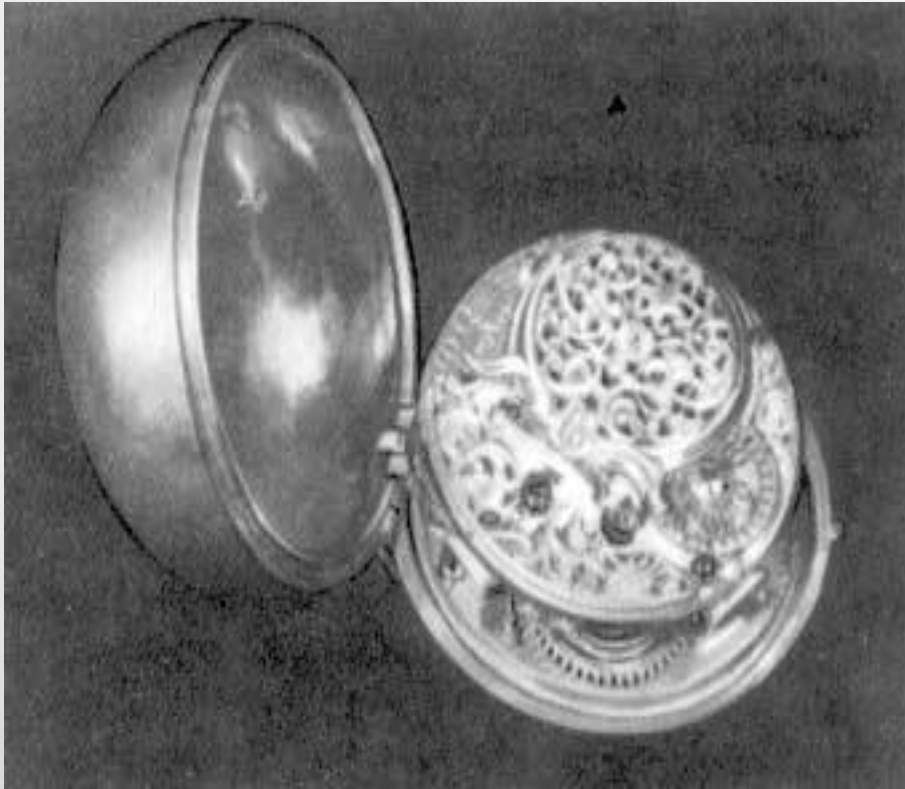
- Necessary complement to a suit was wearing gloves, which are usually decorated with embroidery, and sometimes precious stones
- *Необходимым дополнением костюма были перчатки, которые обычно*

Women's style

- For the first time at this time in England there were decorative handkerchiefs, embroidered richly, but with the end of the century - trimmed with the finest lace.
- *Впервые в это время в Англии появились декоративные носовые платки, роскошно*



Women's style



- Suit and complement the fine jewelry: belts, pearl beads, threads, and first appeared hours. Hours were oval and were called "Nuremberg eggs." Wore them on a chain attached to his belt.
- *Костюм дополняли и массой драгоценных украшений: поясами, жемчужными нитями бус и впервые появившимися часами. Часы имели овальную форму и назывались «нюрнбергское яйцо». Носили их на цепочке, прикрепленной к поясу.*