



# The geography of the USA



The USA is the 4<sup>th</sup> largest country in the world (after Russia, Canada and China). It is situated in central North America and stretches from the Pacific to the Atlantic Ocean.



## **Canada**

It has border with ... in the north and ...in the south and has a sea-border with **Russia** It also includes Alaska and Hawaii.

## **Mexico**

The total area of the country is 9.4 million square kilometers. The enormous size of the country influences the diversity of landscape, climate and even people.



# Alaska







The USA is a **federal republic**, a union of **50** states. The capital of the country **Washington** is situated in a special federal area called **the District of Columbia**.

.

There are many mountains in the West:  
the Rocky Mountains , the Cordillera and  
the Sierra Nevada The highest peak is Mount  
McKinley in Alaska (6,000 meters).



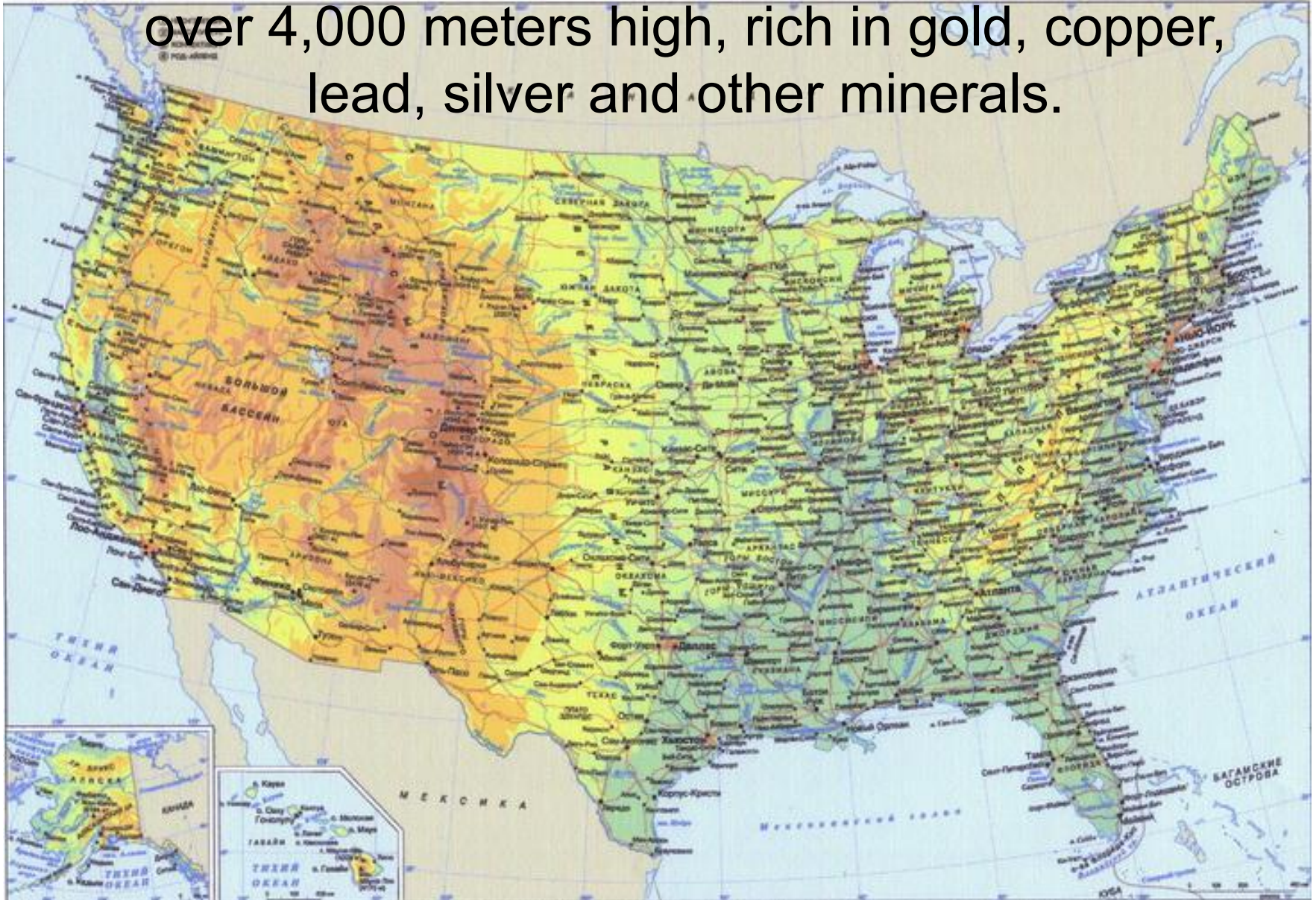


# The Appalachians are in the east.



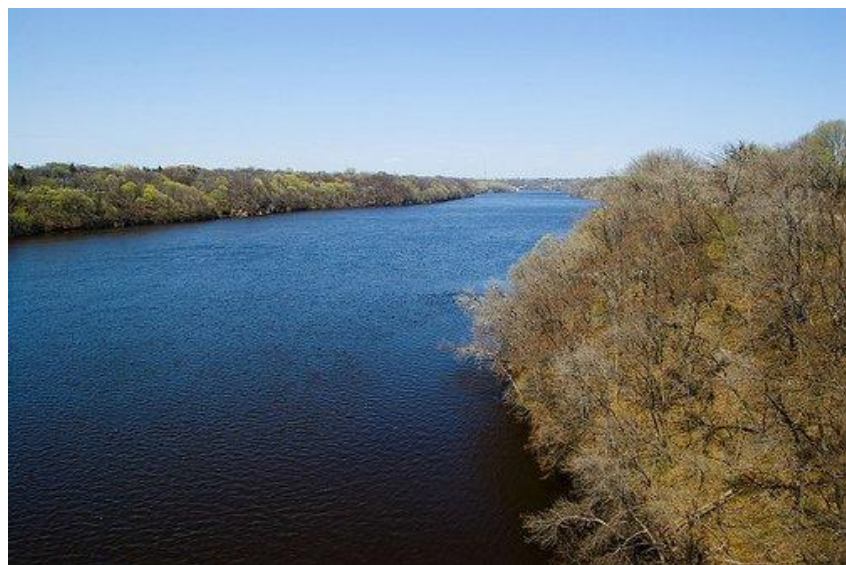


The Rocky Mountains are sharp and rugged, over 4,000 meters high, rich in gold, copper, lead, silver and other minerals.



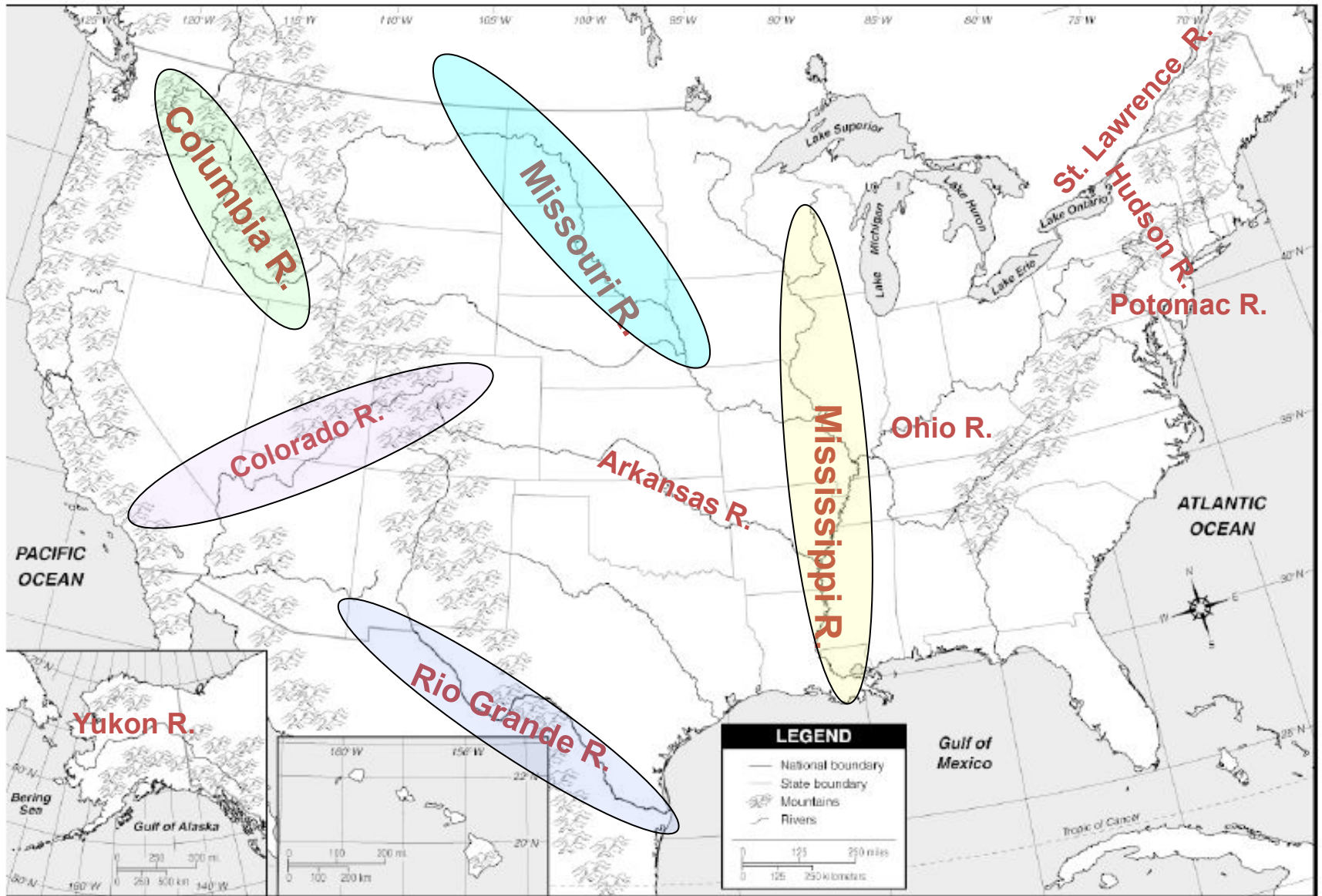


The longest rivers are [the Mississippi](#) (6,400 kilometers), «the father of waters», [the Missouri](#) (1,600 kilometers) «too thin to plough and too thick to drink», [the Colorado](#) wild, restless and angry, [the Columbia](#) full of quiet dignity and [the Rio Grande](#) (3,200 kilometers), a national boundary between the USA and Mexican sizes.





# Rivers



The Colorado forms the Grand Canyon, which strikes one's imagination as a fabulous phenomenon of nature. Its perpendicular walls go up to 1,500 meters above the river level. The USA has thousands of lakes of all kinds





The Great Lakes make up the largest group; they are the greatest collection of fresh water lakes in the world with the total area equal to that of Great Britain. Here the famous Niagara Falls precipitate from the height of 50 meters.







# The Niagara Fall





Among salty lakes the Great Salt Lake in Utah and the Salton Sea in California are the most famous. They are rich in salt (6,000 million tons).





# The Mineral Resources

- **iron**



- **oil**

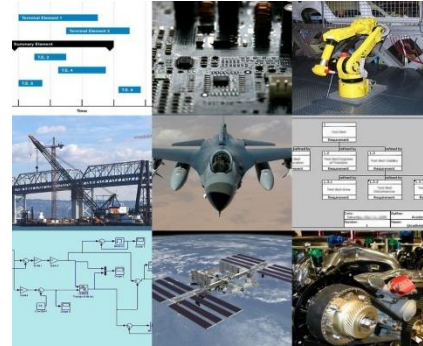


- **coal**

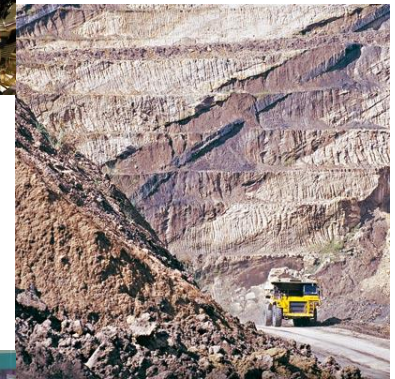


# The Heavy Industry:

•engineering →



•mining →



•chemical industry →





# The Light Industry:

textile



leather



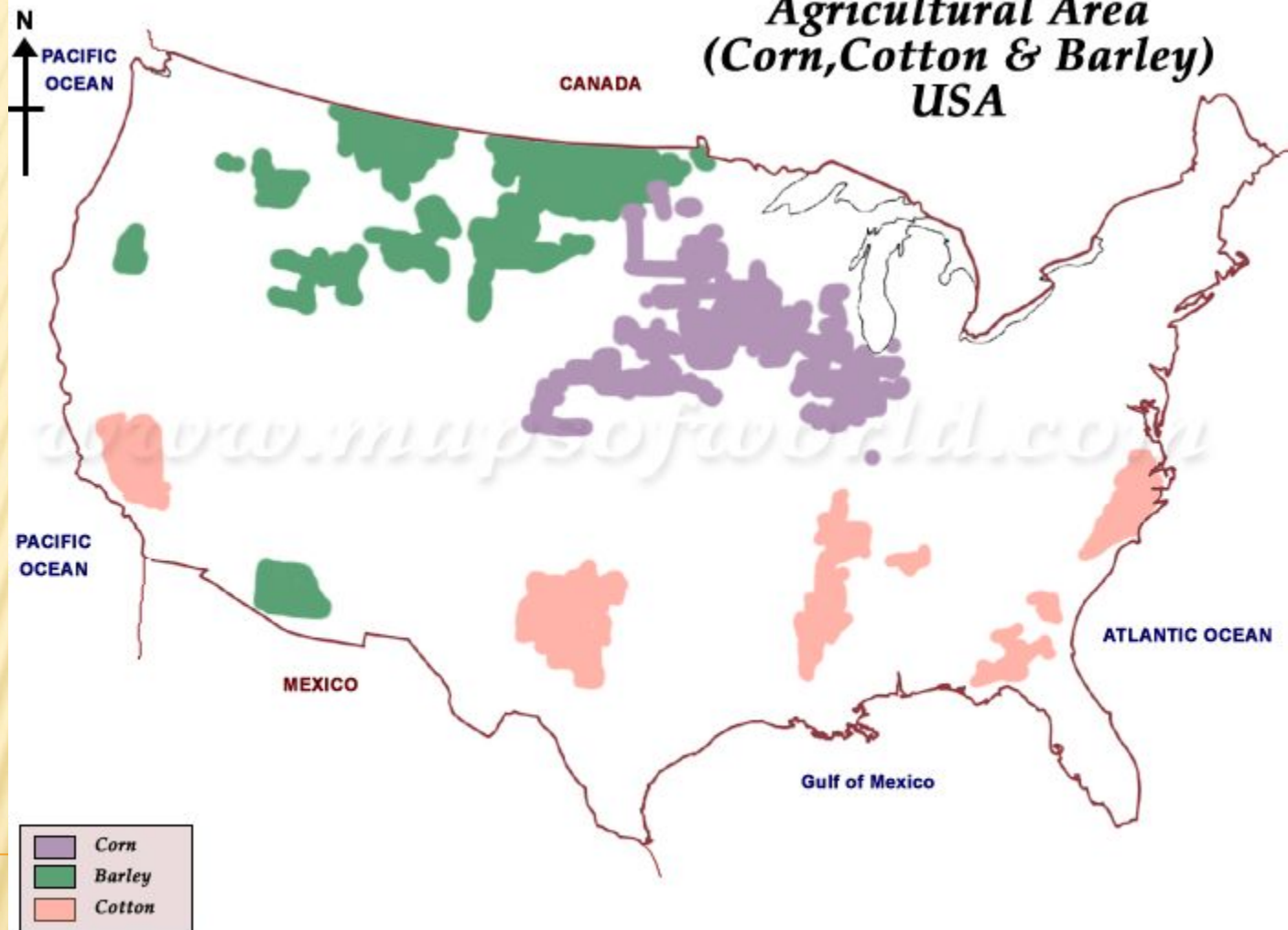
footwear







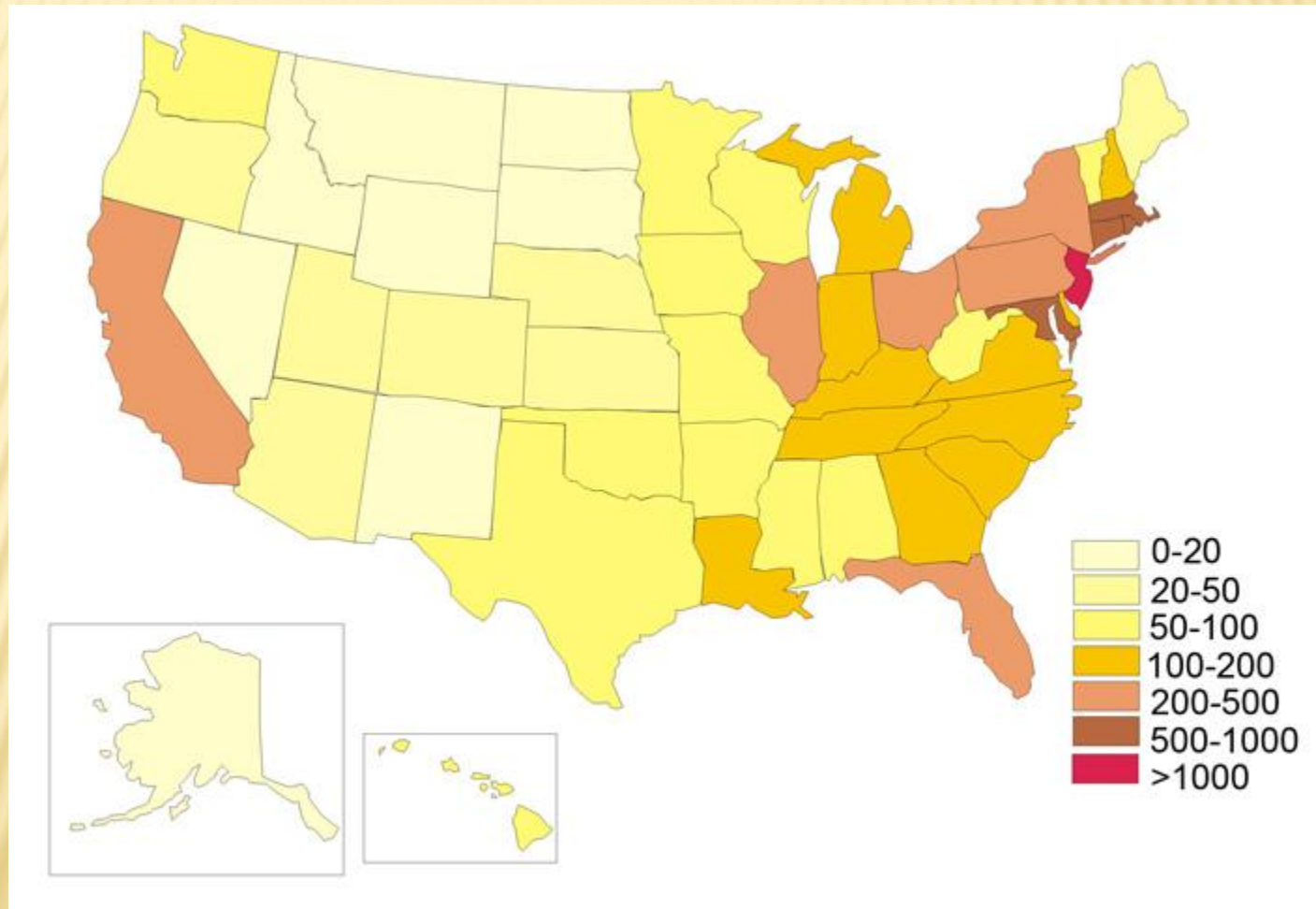
# Agricultural Area (Corn, Cotton & Barley) USA



Map not to Scale

Copyright © Compare Infobase Pvt Ltd 2004-2005

# Population of the USA





# Major US Cities





# New York



# Philadelphia

# Los Angeles



# Chicago



**Thank you for attention!**

