



Gothic Painting



From Sister Wendy Becket, *The Story of Painting*

“The Gothic style began with the architecture of the 12th century, at the height of the Middle Ages, when Europe was putting the memory of the Dark Ages behind it and moving into a radiant new era of prosperity and confidence.



From Sister Wendy Becket, *The Story of Painting*

“In the realm of painting, the change to the new style became visible about a century after the first of these cathedrals rose. In contrast to the Romanesque and Byzantine styles, the most noticeable feature of the art of the Gothic period is its increased naturalism. This quality, which first appeared in the work of Italian artists in the late 13th century, became the dominant painting style throughout Europe until the end of the 15th century.”

Instructive Art

- ◆ Early Gothic art was almost entirely religious in nature.
- ◆ It was intended to teach the largely illiterate public or to serve as spiritual aids for prayer, in the Byzantine tradition.



Three Women at the Tomb
Biblical fresco on the wall of
the monastery of Pedralbo,
Barcelona

Italian Origins



Fresco of the Annunciation,
Church of S. Claudio, Spello,
Umbria

- ◆ The Gothic style in painting emerged in Italy in the 13th century.
- ◆ This is partly due to the tendency of Italian church building to retain large wall spaces, suitable for frescos. Gothic architecture in the North resulted in a movement to stained glass.

Departure from Byzantine Influence

- ◆ Though it may not appear clear to the modern eye, Italian painters departed from Byzantine formalism as they sought greater realism.
- ◆ There is an interest in producing the illusion of depth, though mathematical perspective remained unknown.



Cimabue The Virgin and Child Enthroned and Surrounded by Angels – Still close to the Greek style.

Cimabue



- ◆ Working in Florence at the end of the 13th century, he moved away from the flatness of icon painting.
- ◆ His Maesta figures have a sweetness about them.
- ◆ The drapery looks soft.
- ◆ 3 dimensionality is hinted at.

Cimabue

Angels, detail from
Cimabue's fresco
*Apocalyptic
Christ*, found in the
upper church of San
Francesco, Assisi.



Duccio of Sienna



- ◆ Much greater three dimensionality appears in the work of Duccio.
- ◆ His figures are more “solid” than Cimabue’s.



Duccio's *Maesta*, above & detail to left.

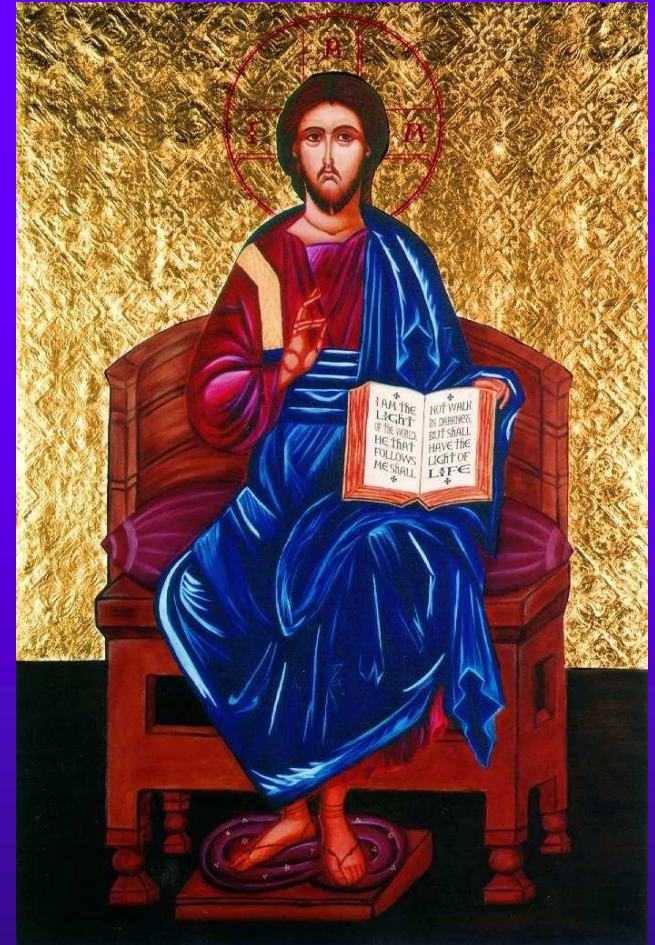
Painting with Gold



- ◆ This most valuable metal has always been reserved for the most important works – in sculpture, painting, or architectural detailing.

Painting with gold

- ◆ In Byzantine and Medieval painting, gold was used to indicate the spiritual or heavenly sphere.
- ◆ Its reflective properties are superbly suited to candle-lit illumination.



A modern gilded icon in the Byzantine tradition

Painting With Gold



Gilded Icon with Christ Enthroned. St. Paul's Monastery, St. Athos.

Painting With Gold



- ◆ Sometimes a greenish colour tinges the gold.
- ◆ This is the result of natural impurities showing through.

Simone Martini

- ◆ One of the most influential of the Italians was Simone Martini, also of Sienna, and a disciple of Duccio.



Simone Martini



- ◆ At the end of his life, Martini resided in Avignon, the temporary residence of popes.
- ◆ This brought his style to the attention of the French.

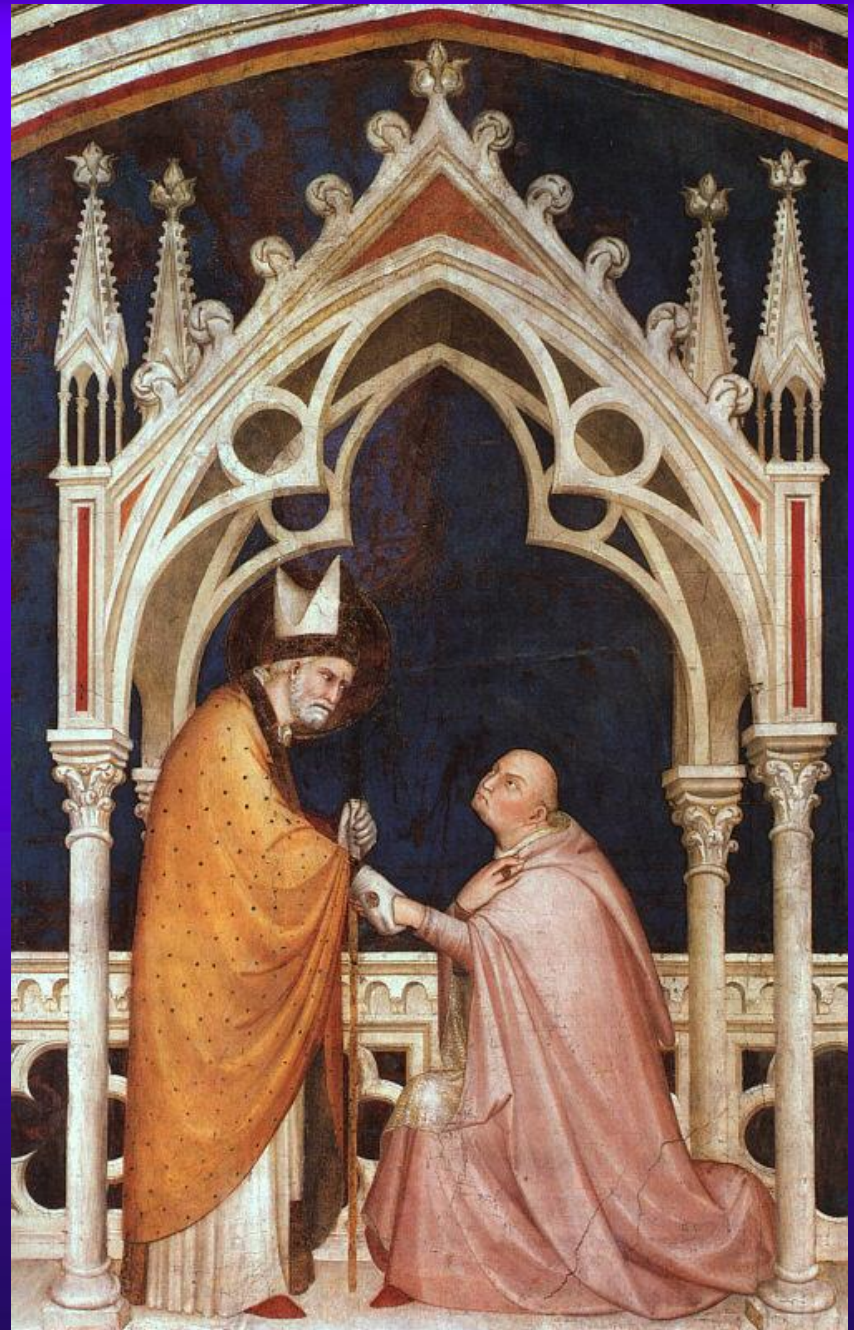
Simone Martini

- ◆ Martini's colours and architectural backgrounds are in the manner of Duccio.
- ◆ His modeling of people, however, is in the more radical style of Giotto.



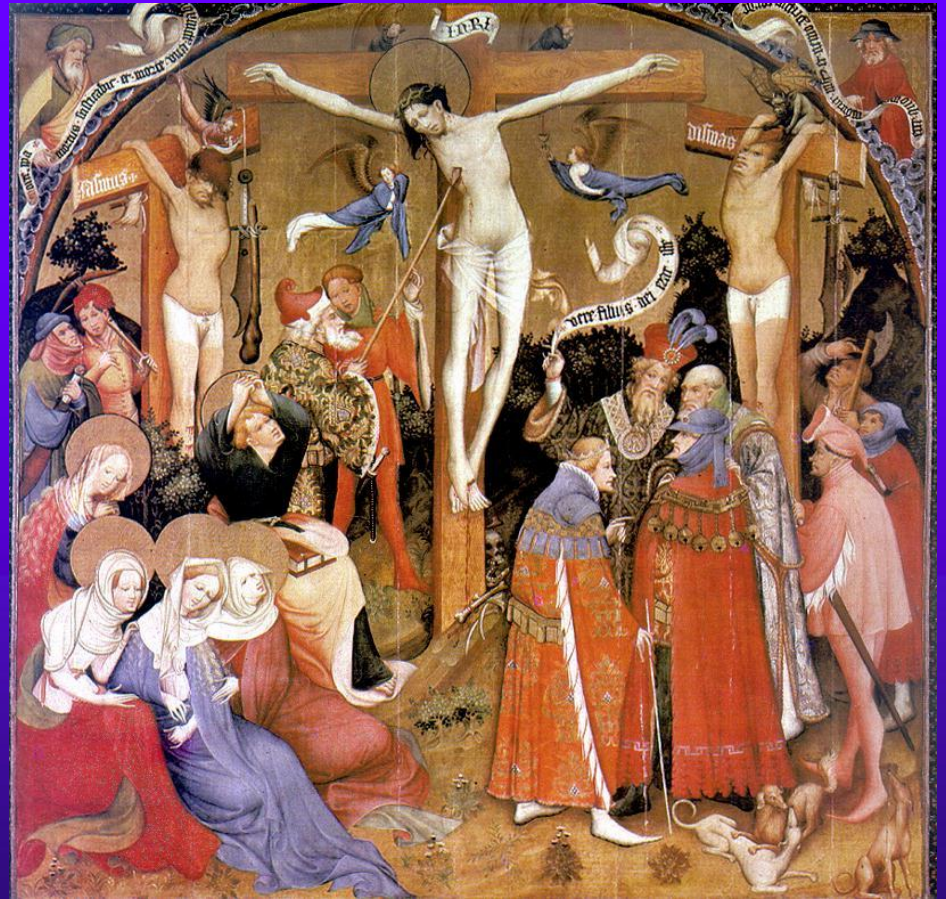
Simone Martini

Martini's portrait of
Gentile Portino de
Montefiore.



The International Gothic Style

- ◆ This courtly style was popular throughout Europe and came to be known as *International Gothic*.



Konrad von Soest, *The Crucifixion*

The Wilton Diptych

- ◆ The *Wilton Diptych* is a prime example of this style.
 - Richard II , accompanied by two saintly kings and John the Baptist, receives the blessing of the Christ Child as he is held in the arms of Mary and surrounded by bejeweled angels.



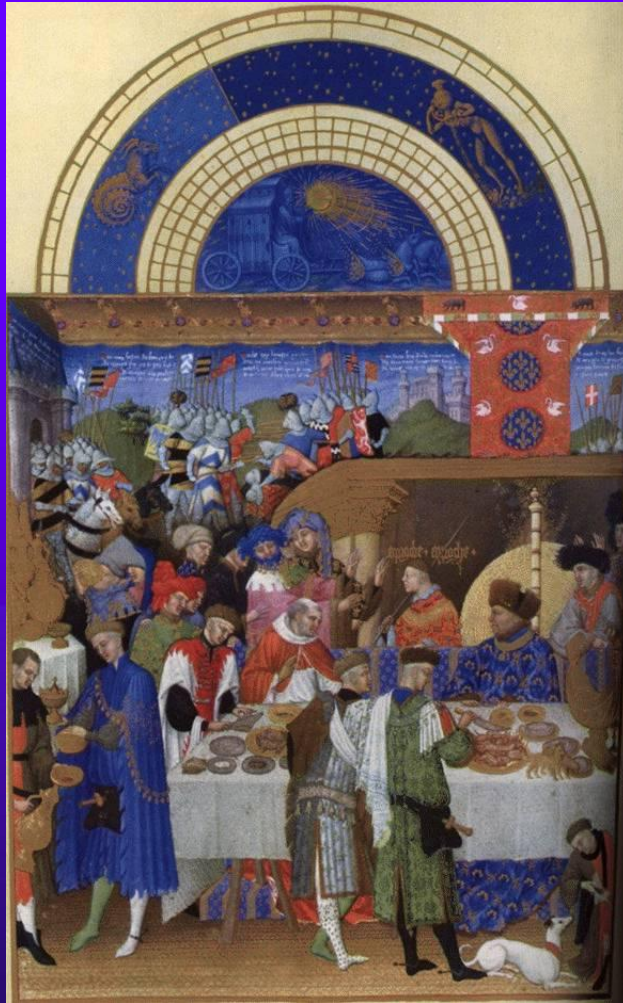
Illumination

- ◆ This courtly style was particularly suited to illuminated works produced for noblemen.



King David, Andre Beauneveu

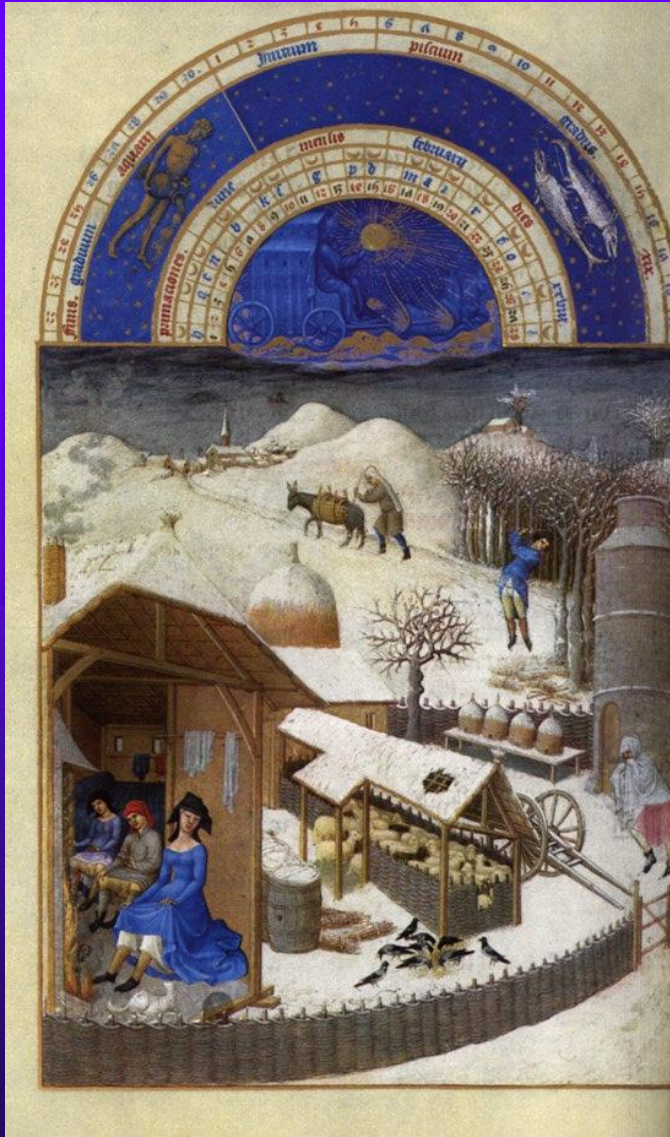
The Limbourg Brothers



- ◆ The greatest of all of Medieval illuminators were three brothers, Pol, Herman and Jean Limbourg, who worked for the immensely rich Duc de Berry.

January, from Les Tres Riches Heures

The Limbourg Brothers



- ◆ Historians have found this volume a particularly rich source of information on the lives of rich and poor in early 15th century France.

February

The Limbourg Brothers

- ◆ Their work displays courtly refinement .



Detail from May



Detail from *September*

- ◆ ...mixed with every day reality



Questions

- ◆ When appeared gothic style?
- ◆ Which style in painting emerged in Italy in the 13th century?
- ◆ Who was Simone Martini?

Thank you for attention!

