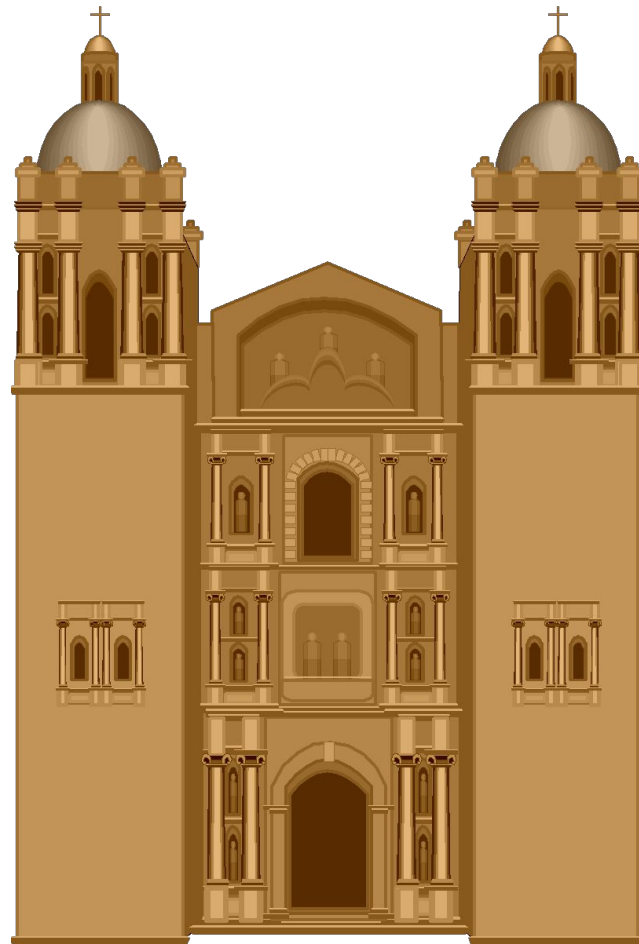
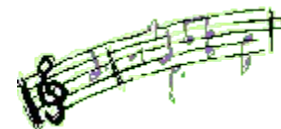


In der Stadt

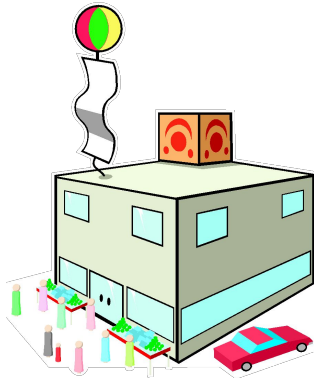
der Dom (die Döme)



der Musikladen (die Musikläden)



der Supermarkt (die Supermärkte)



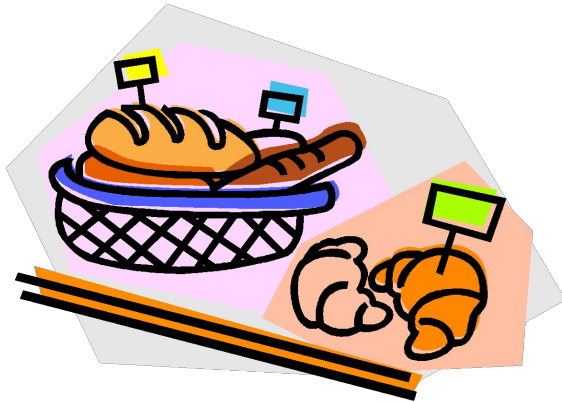
der Bahnhof (die Bahnhöfe)



der Park (die Parks)



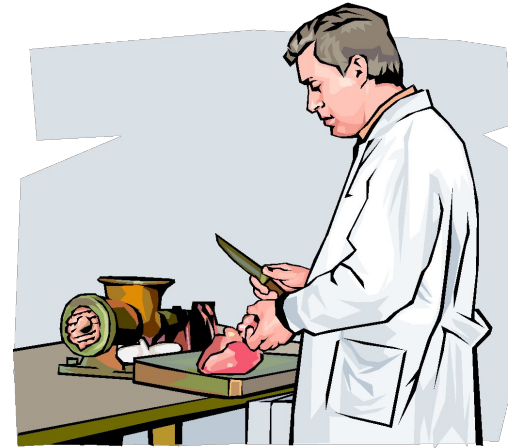
die Bäckerei (en)



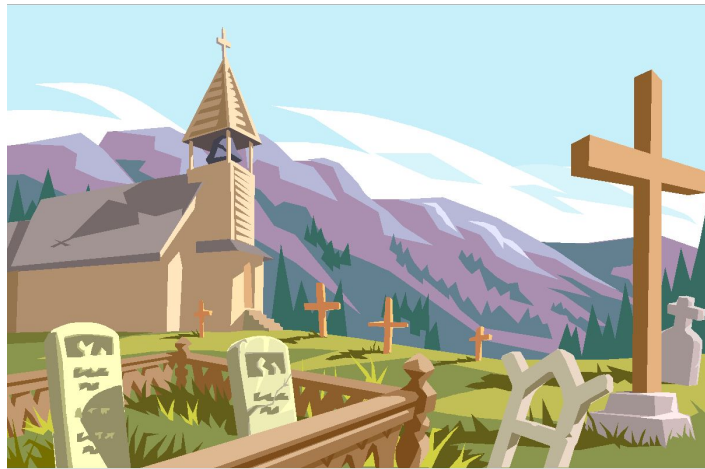
die Konditorei (en)



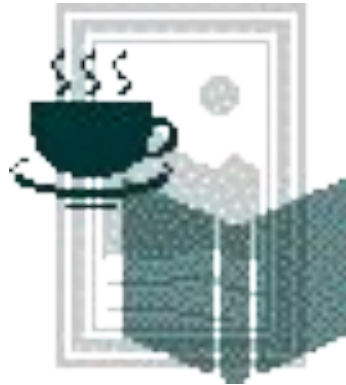
die Metzgerei (en)



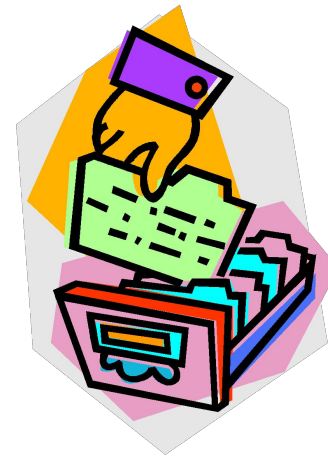
die Kirche (die Kirchen)



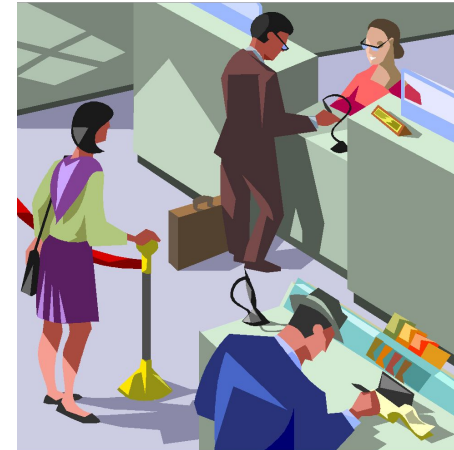
die Buchhandlung (en)



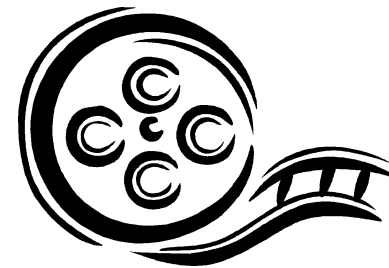
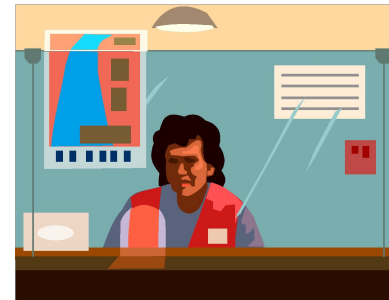
die Bibliothek (en)



die Bank (en)



das Kino (s)



das Hallenbad (die Hallenbäder)



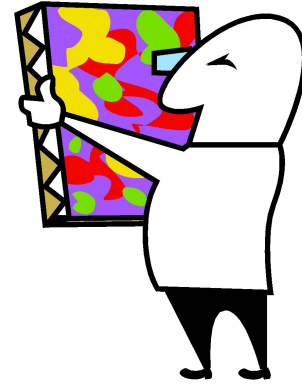
das Schwimmbad (die Schwimmbäder)



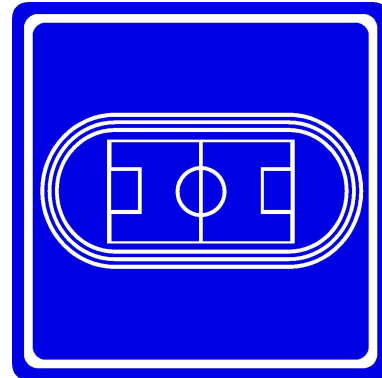
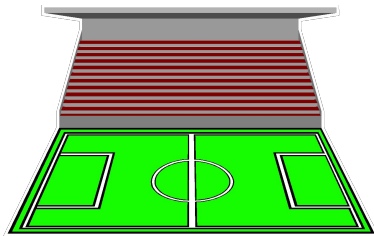
das Schloss (die Schlösser)



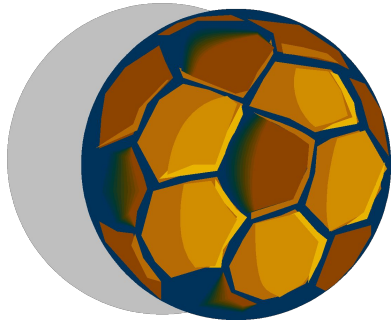
das Museum (die Museen)



das Stadion (die Stadien)



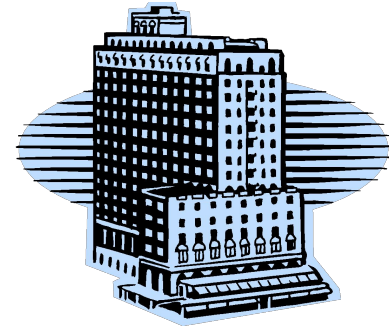
das Sportzentrum (zentren)



das Büro (s)



das Hotel (s)



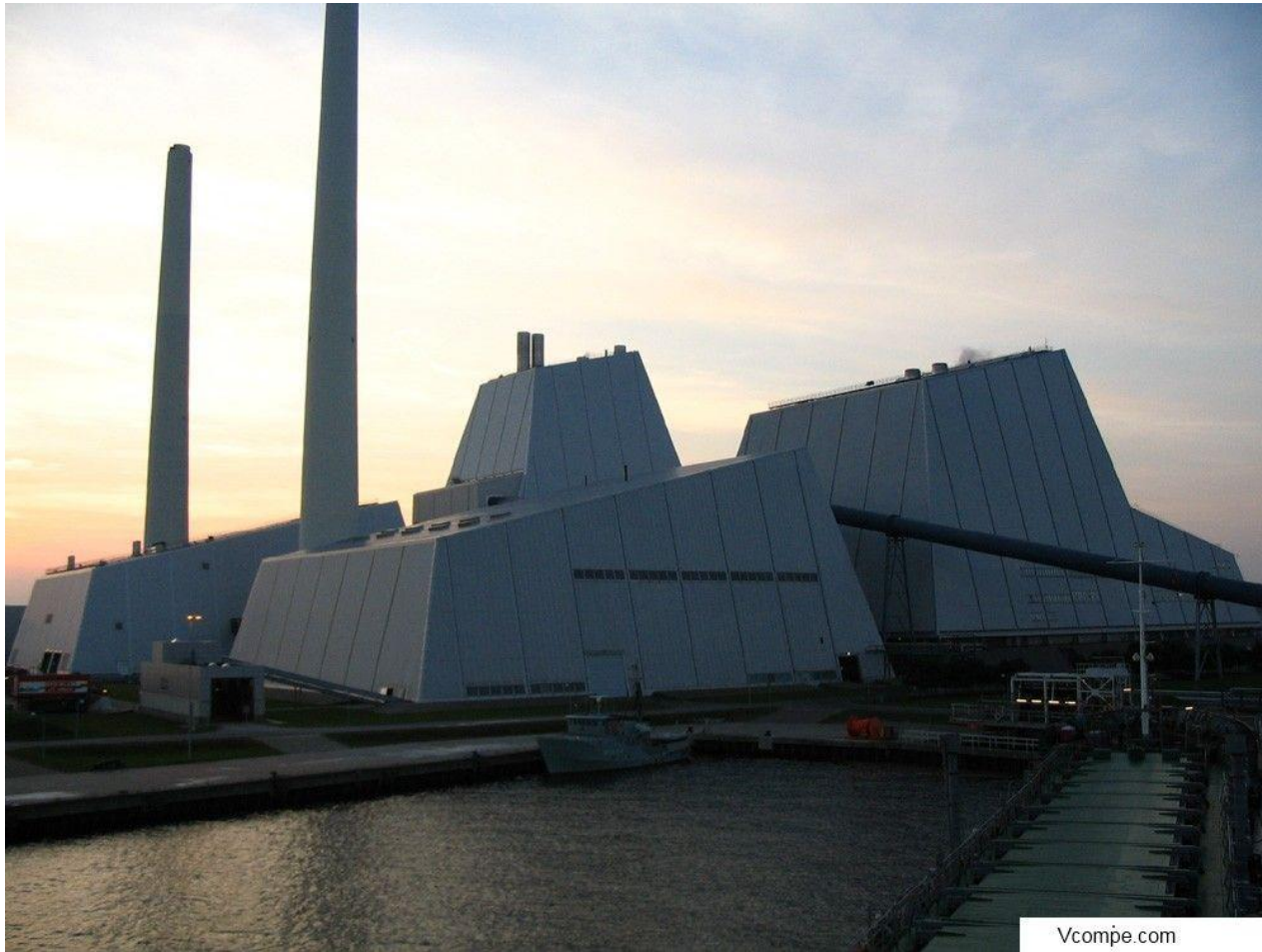
das Theater (die Theater)



das Geschäft (die Geschäfte)



Die Fabrik (en)



Die Apotheke (n)



Das Krankenhaus (die Krankenhäuser)



Die Bibliothek (en)



Die Post (en)



<http://dar-altay.spb.ru>

Die Stadt (die Städte)



Das Dorf (die Dörfer)



Der Baum (die Bäume)



Die Burg (die Burgen)



Die Burgruine (die Burgruinen)



Der Flughafen (die Flughäfen)



Die Kneipe (die Kneipen)



Der Wohnblock (die Wohnblocks)



Die Tankstelle (die Tankstellen)



Der Platz (die Plätze)



Der Kinderspielplatz (die Kinderspielplätze)



Der Jugendherberge (die Jugendherbergen)



Das Zoo (die Zoos)



Das Café (die Cafés)



Das Parkhaus (die Parkhäuser)



Das Restaurant (die Restaurants)



Die Fußgängerzone (die)

