

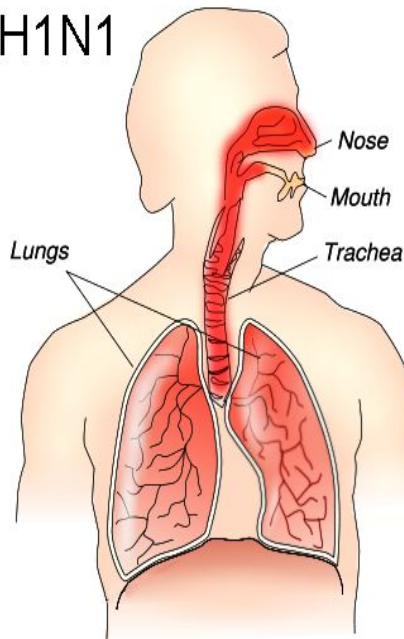


Infectious Diseases

presentation
by students of group 147

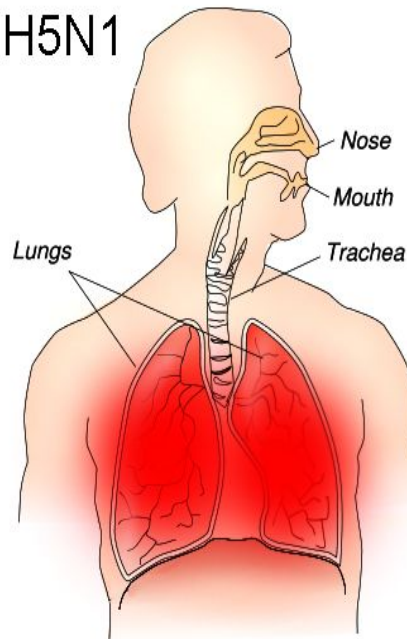
Avian Influenza A

H1N1

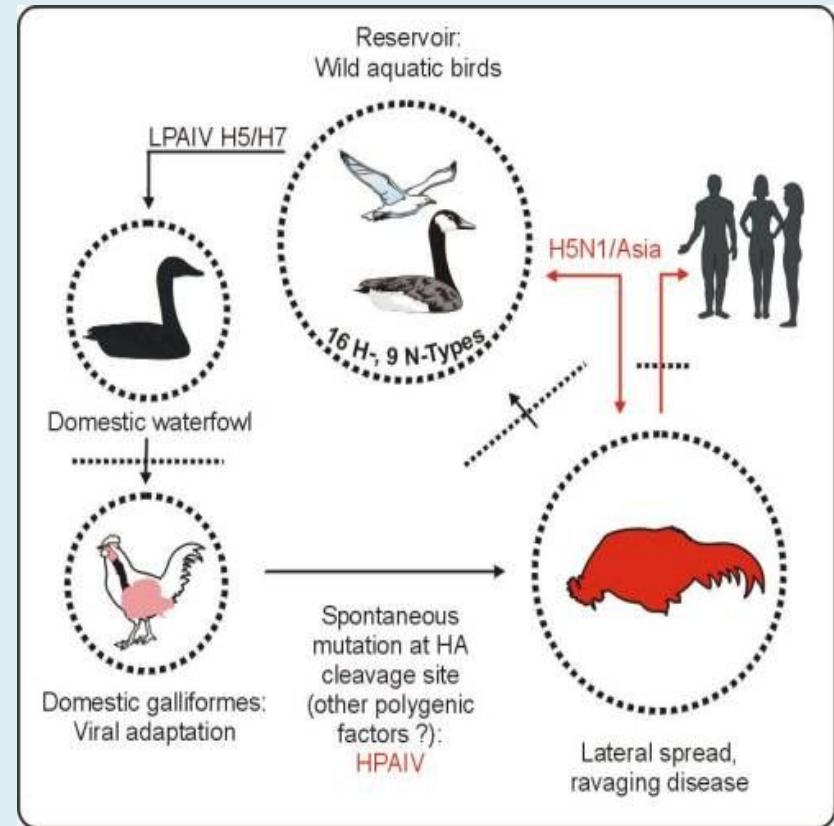


Easily spread
Rarely fatal

H5N1



Spreads slowly
Often fatal



Symptoms: There is a range of symptoms of avian influenza in humans. These can include flu-like symptoms (fever, cough, sore throat, and muscle aches), severe respiratory distress (pneumonia or difficulty breathing), and eye infections.

Hepatitis

The term is derived from the Greek *hêpar* (ἥπαρ), meaning "liver", and the suffix *-itis* (-ῖτις), meaning "inflammation"

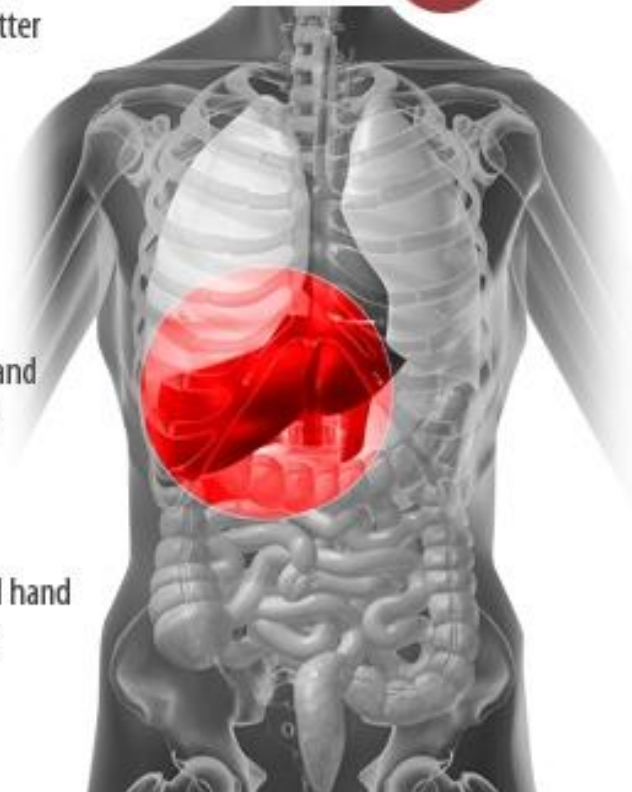
HEPATITIS **A** FACTS

- 1** Is a viral infection of the liver spread when faecal matter enters the mouth



- 2** May last several weeks and can be debilitating but most people recover completely

- 3** Preventable with careful hand washing, keeping toilets and bathrooms clean, avoiding infected water sources



SYMPTOMS INCLUDE

nausea



vomiting



SPREAD BY



direct
contact



food &
beverages



cups &
spoons

and any other objects handled by
the infected person

Hepatitis

In the US and other industrialized countries, hepatitis is most often caused by viral infection. More than five types of hepatitis virus have now been identified.

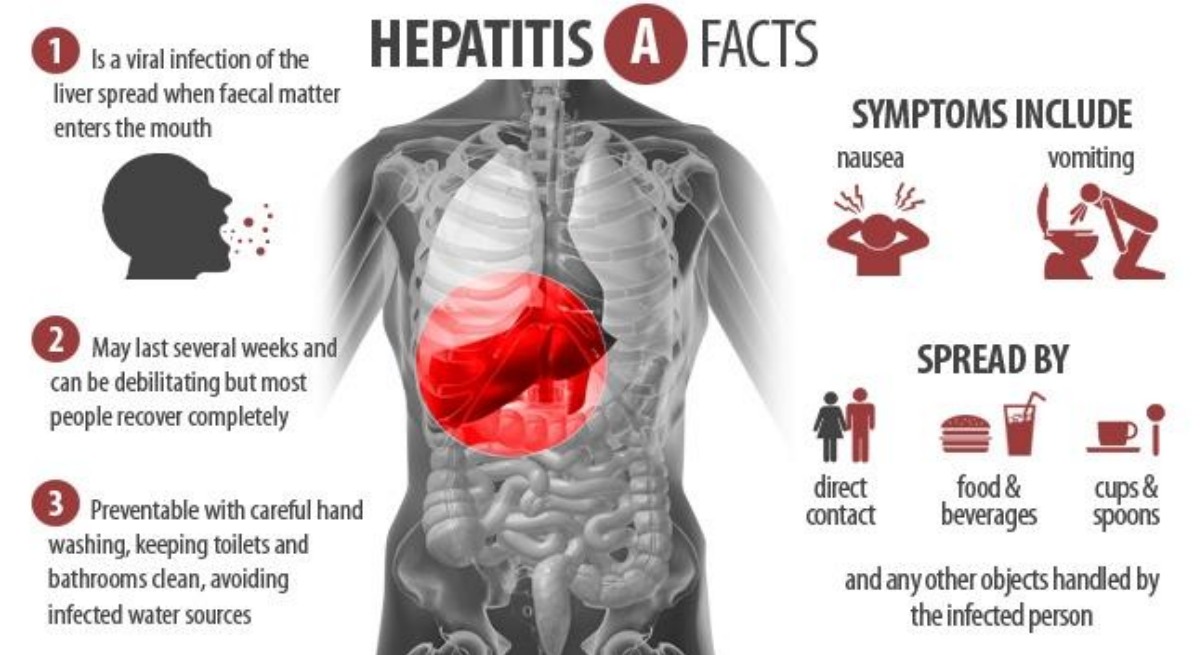
The most common is hepatitis A virus (HAV), which is spread by fecal-oral contamination.

Hepatitis B virus (HBV) may be transmitted sexually, by sharing needles used for injection, and by close interpersonal contact.

Hepatitis C is spread through blood and blood products or by close contact with an infected person.

The name hepatitis simply means «inflammation of the liver», but this disease also causes necrosis (death) of liver cells.

HEPATITIS A FACTS



1 Is a viral infection of the liver spread when faecal matter enters the mouth

2 May last several weeks and can be debilitating but most people recover completely

3 Preventable with careful hand washing, keeping toilets and bathrooms clean, avoiding infected water sources

SYMPTOMS INCLUDE

- nausea
- vomiting

SPREAD BY

- direct contact
- food & beverages
- cups & spoons

and any other objects handled by the infected person

