

Claude Monet

(1840-1926)



Self-portrait



Garden at Sainte-Adresse



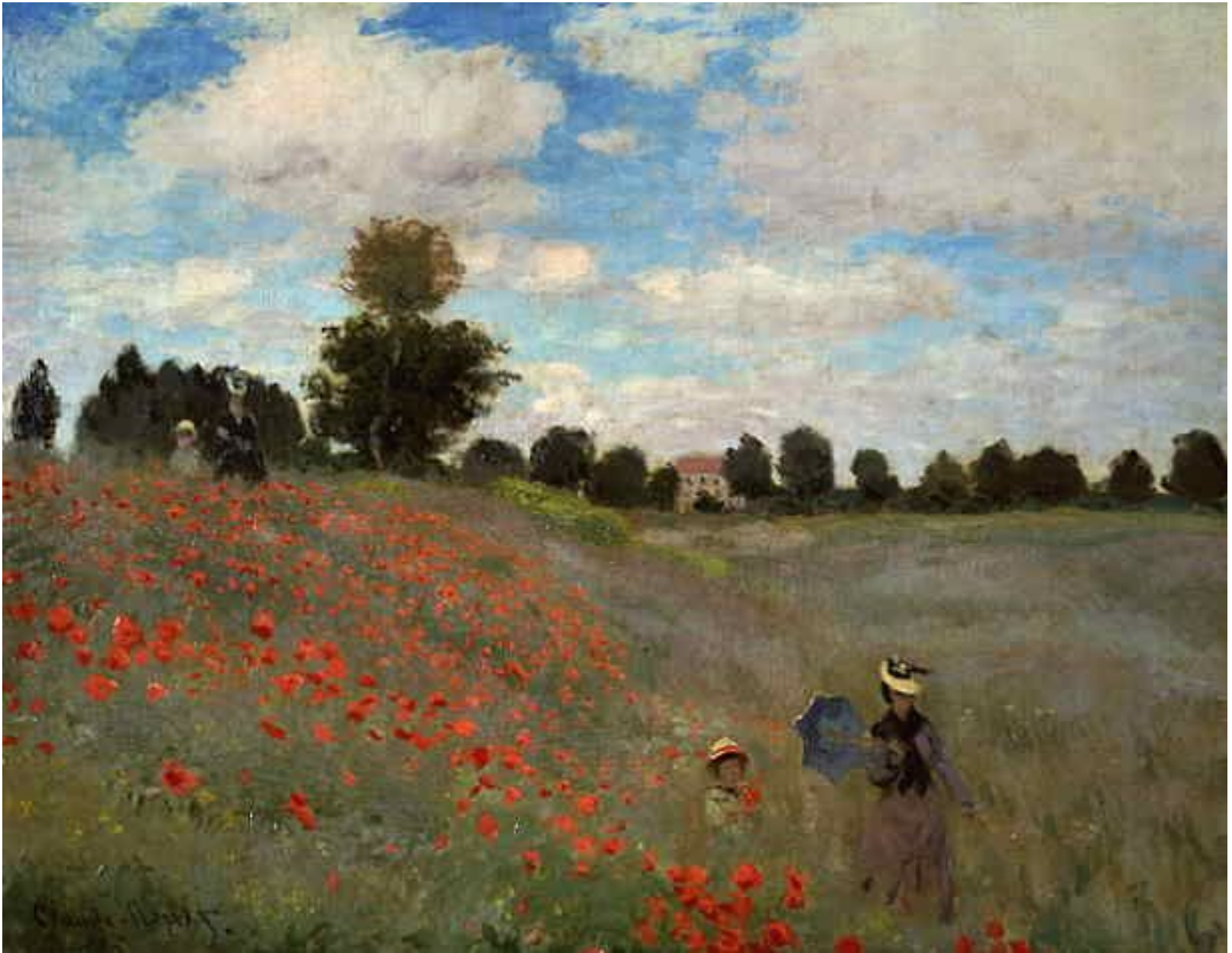
The magpie



La Grenouillère



The beach at Trouville



Coquelicots (Poppies, near Argenteuil)



Fishing boats leaving the harbor, le Havre



Saint-Lazare station

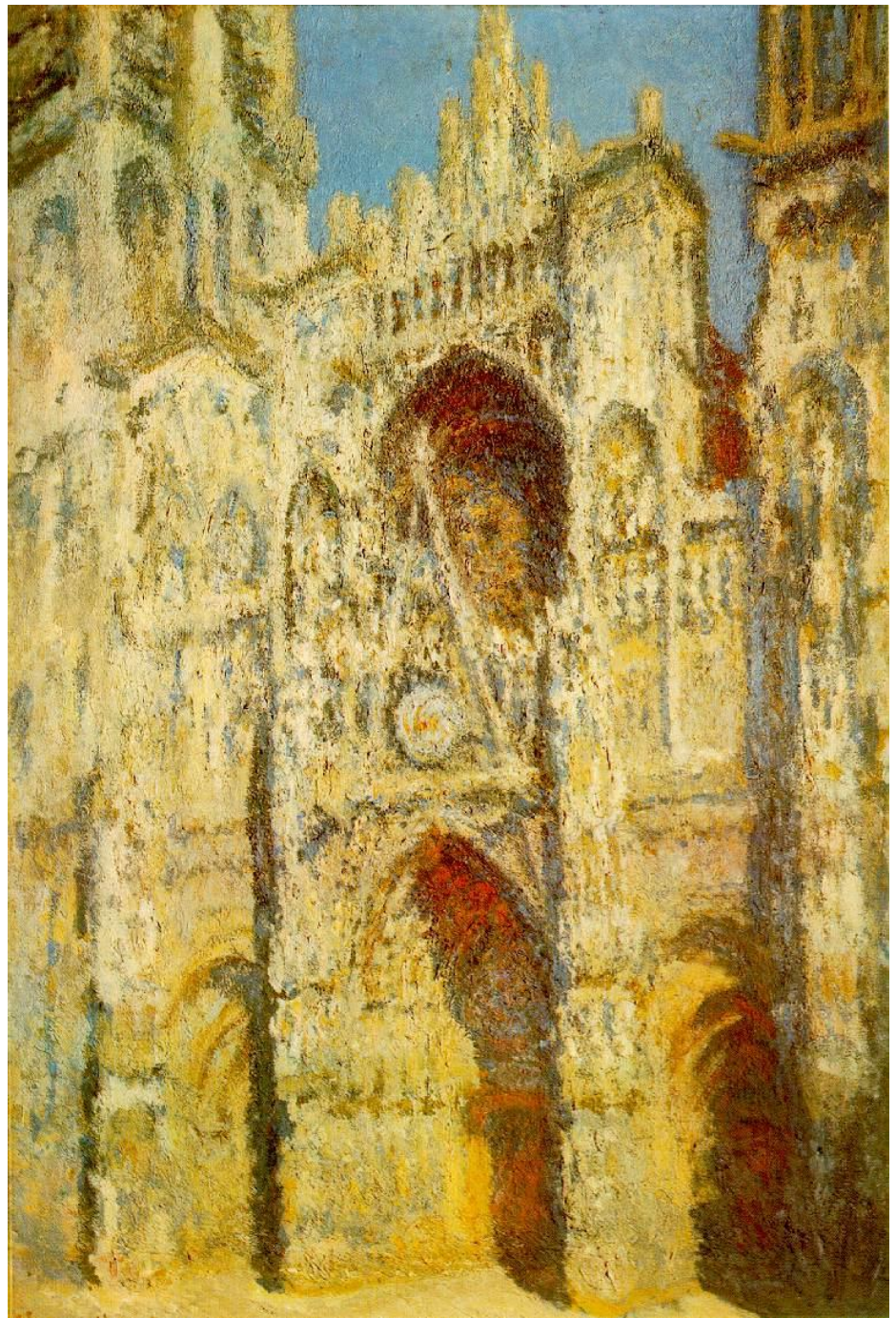
Boulevard des Capucines



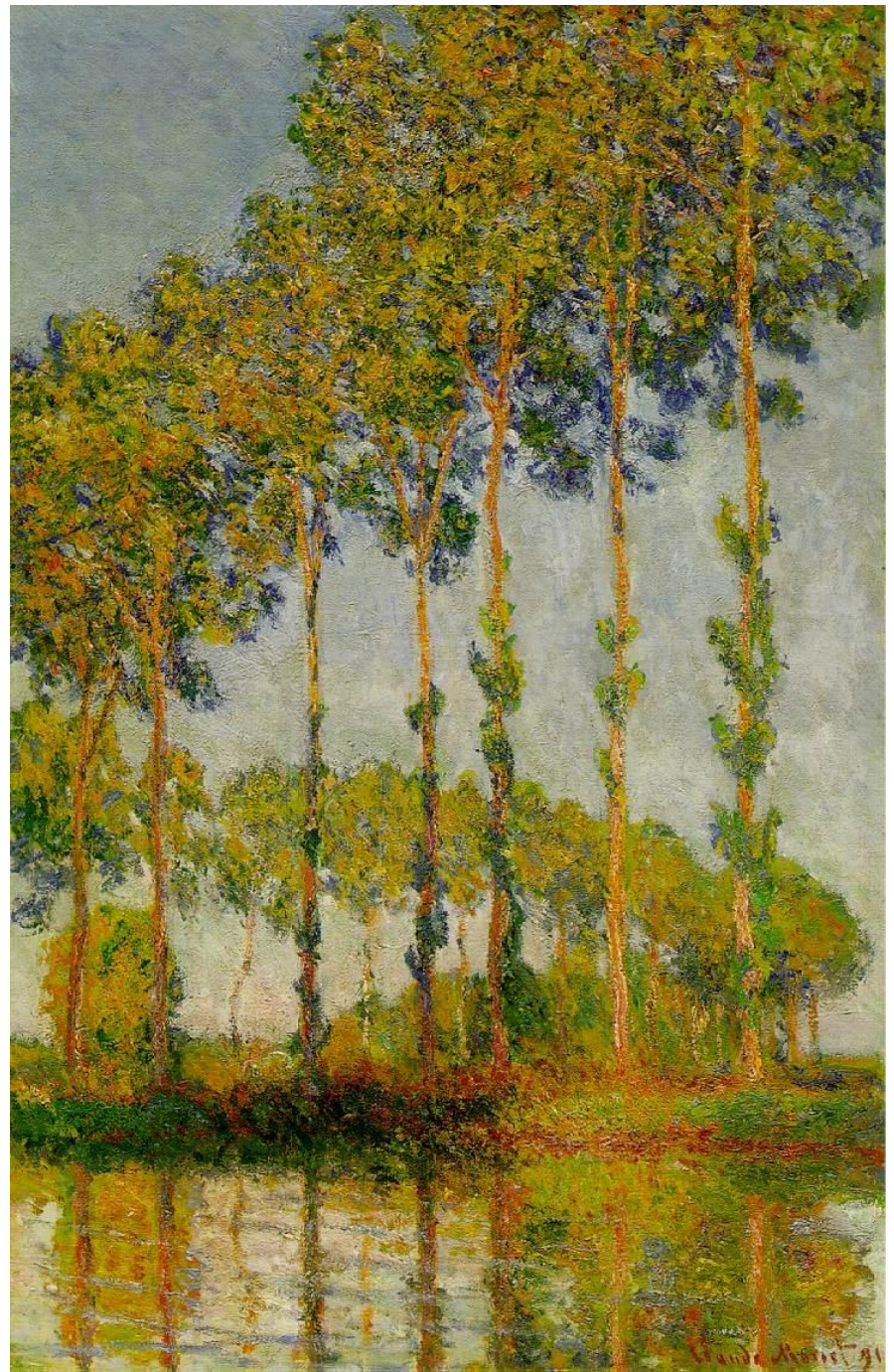


Landscape: park Monceau

La cathedral de rouen



**Poplars
along the
River Epte,
autumn**

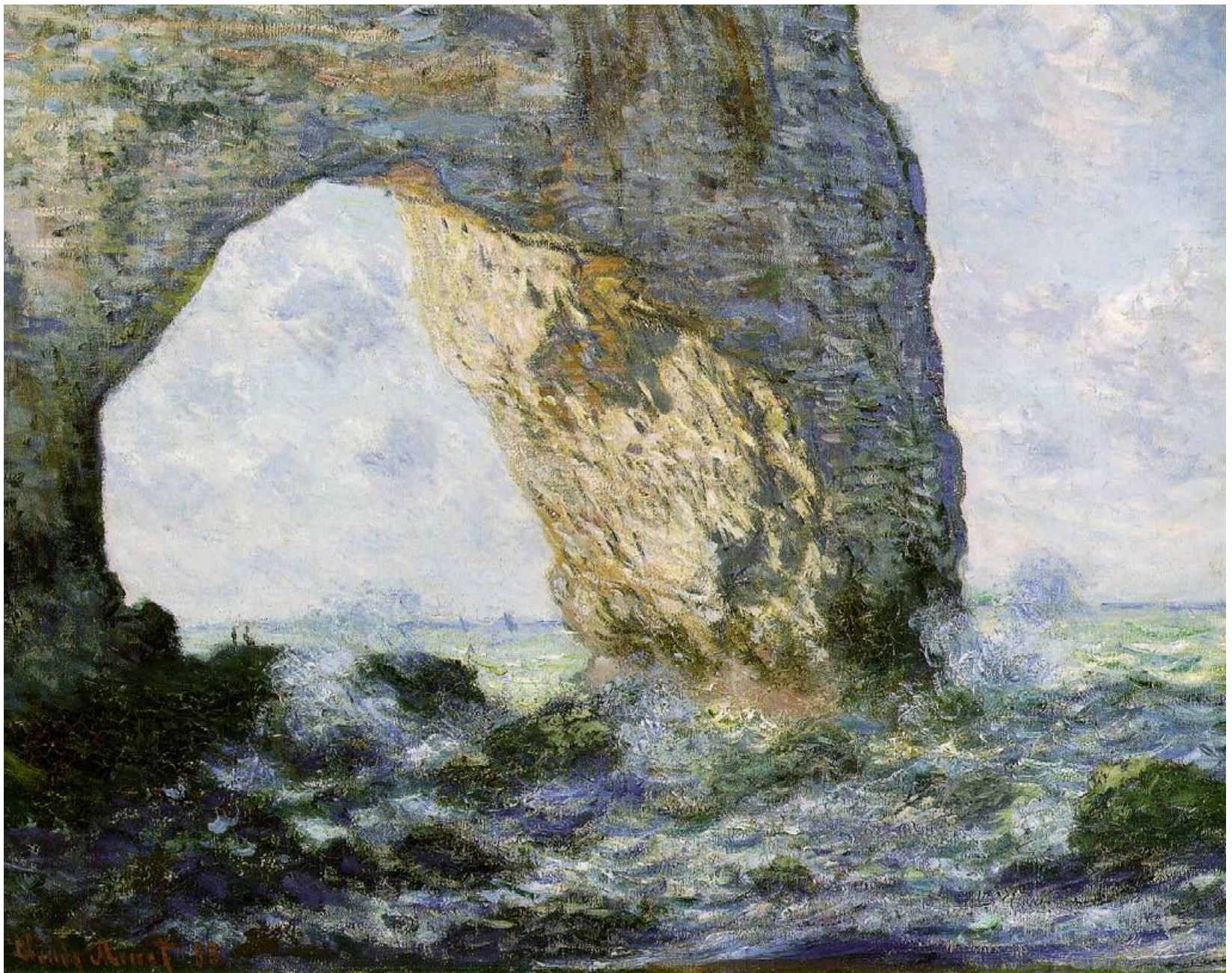




The Seine at Argenteuil



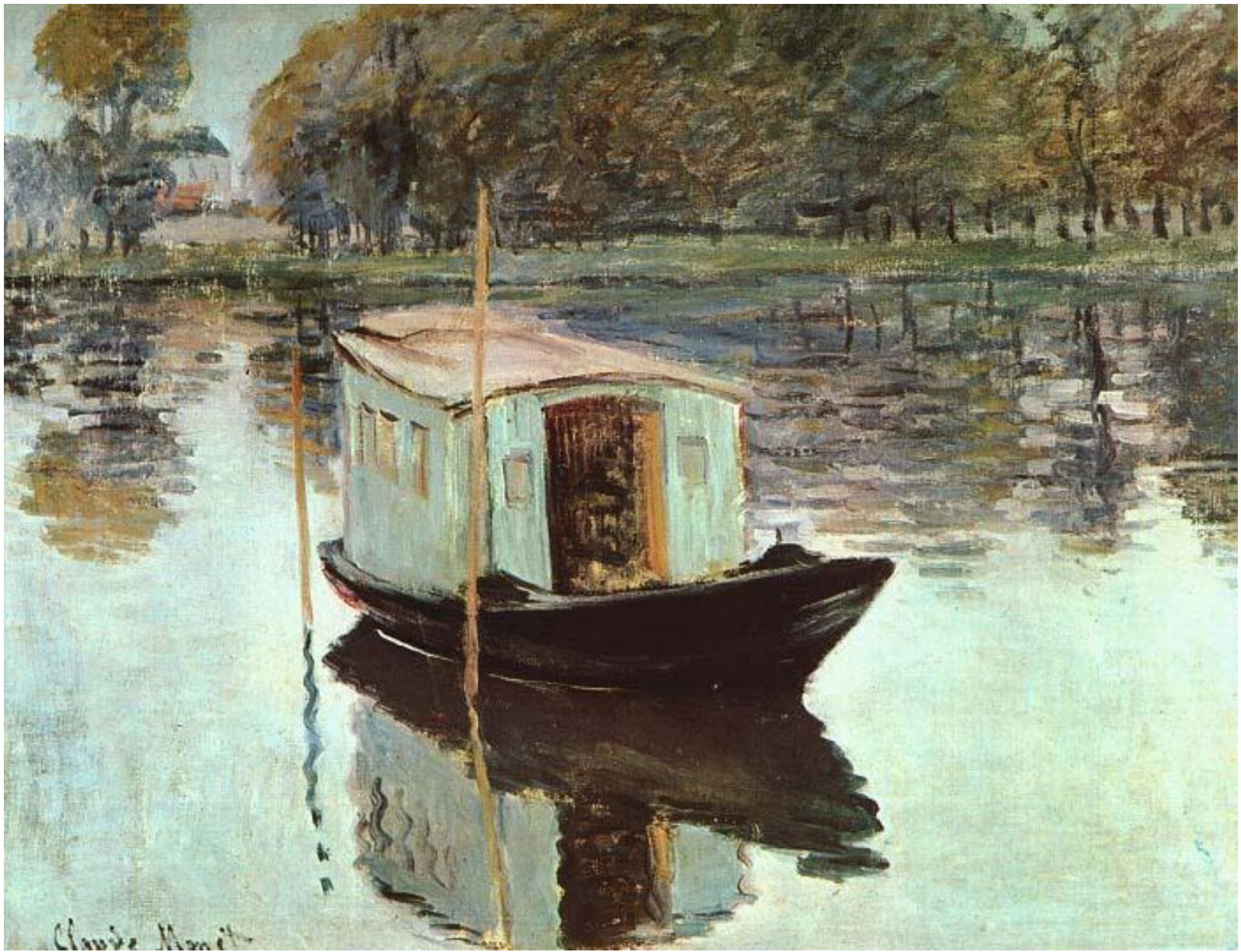
The woman at work



Rock Arch West of Etretat (The Manneport)

**The walk.
Lady
with a
parasol**





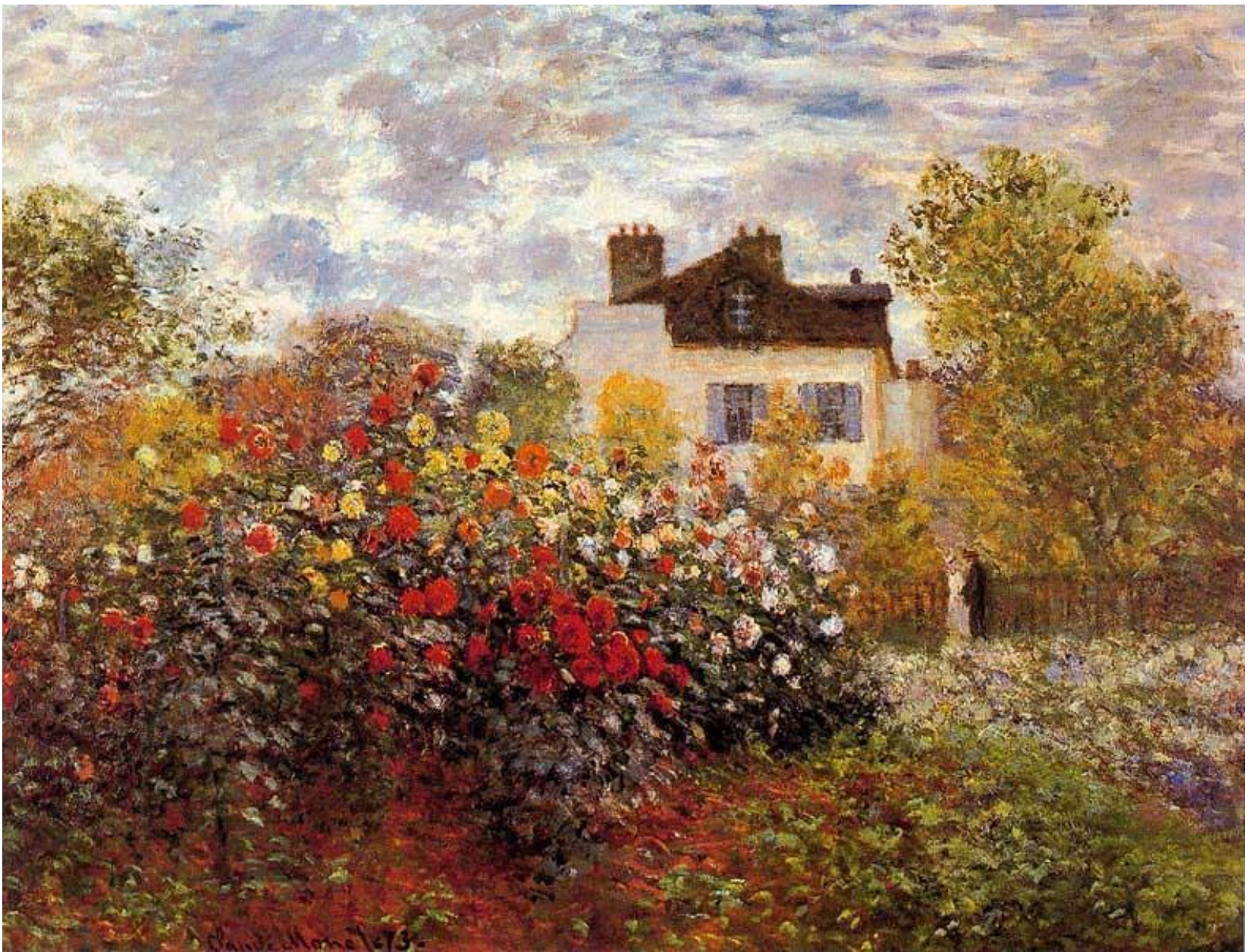
The studio boat

La Japonaise



The artist's garden at Vetheuil





The artist's garden at Argeteuil



Garden in Bordighera, impression of morning



Japanaise bridge



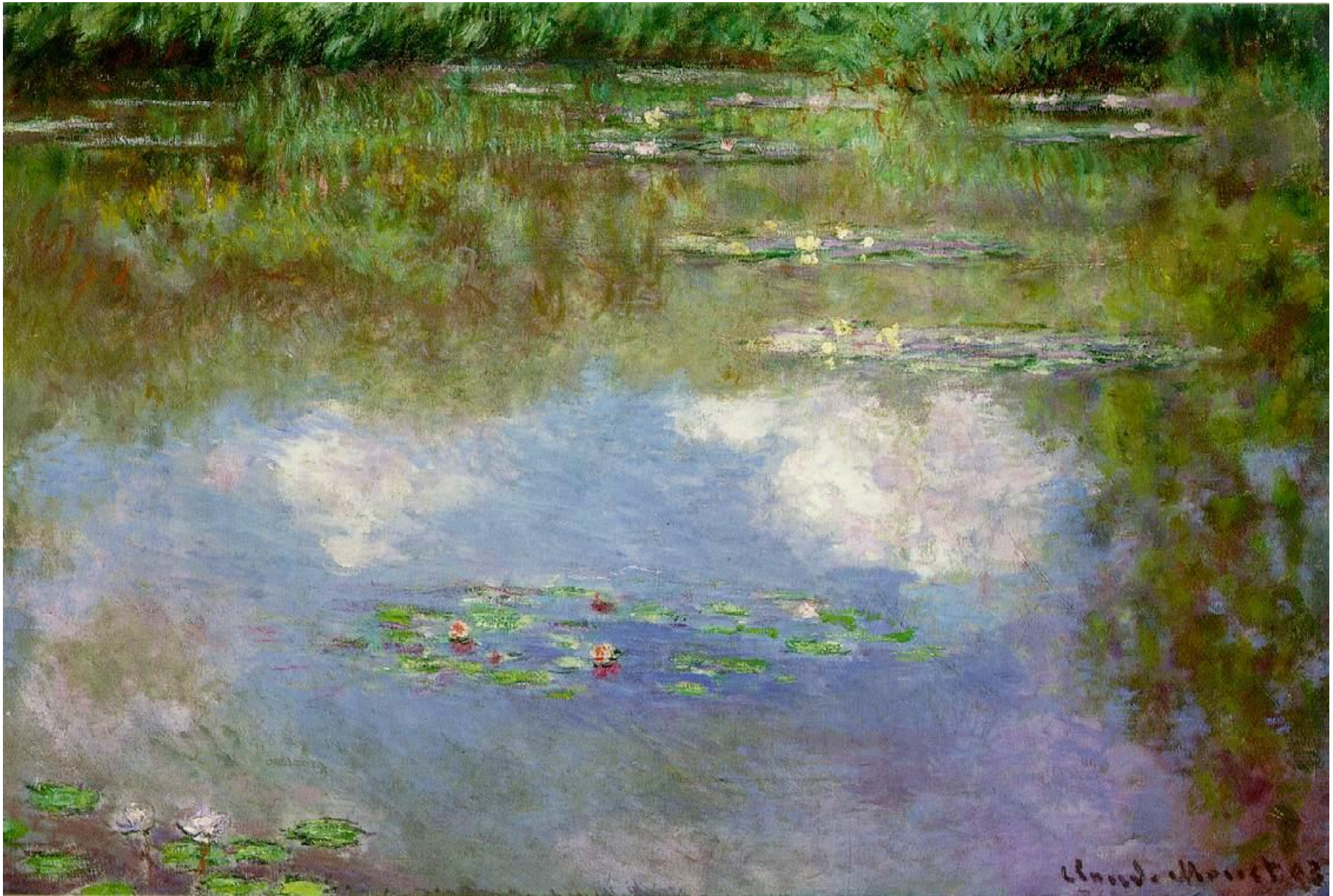
The white water lilies



Thames at Westminster



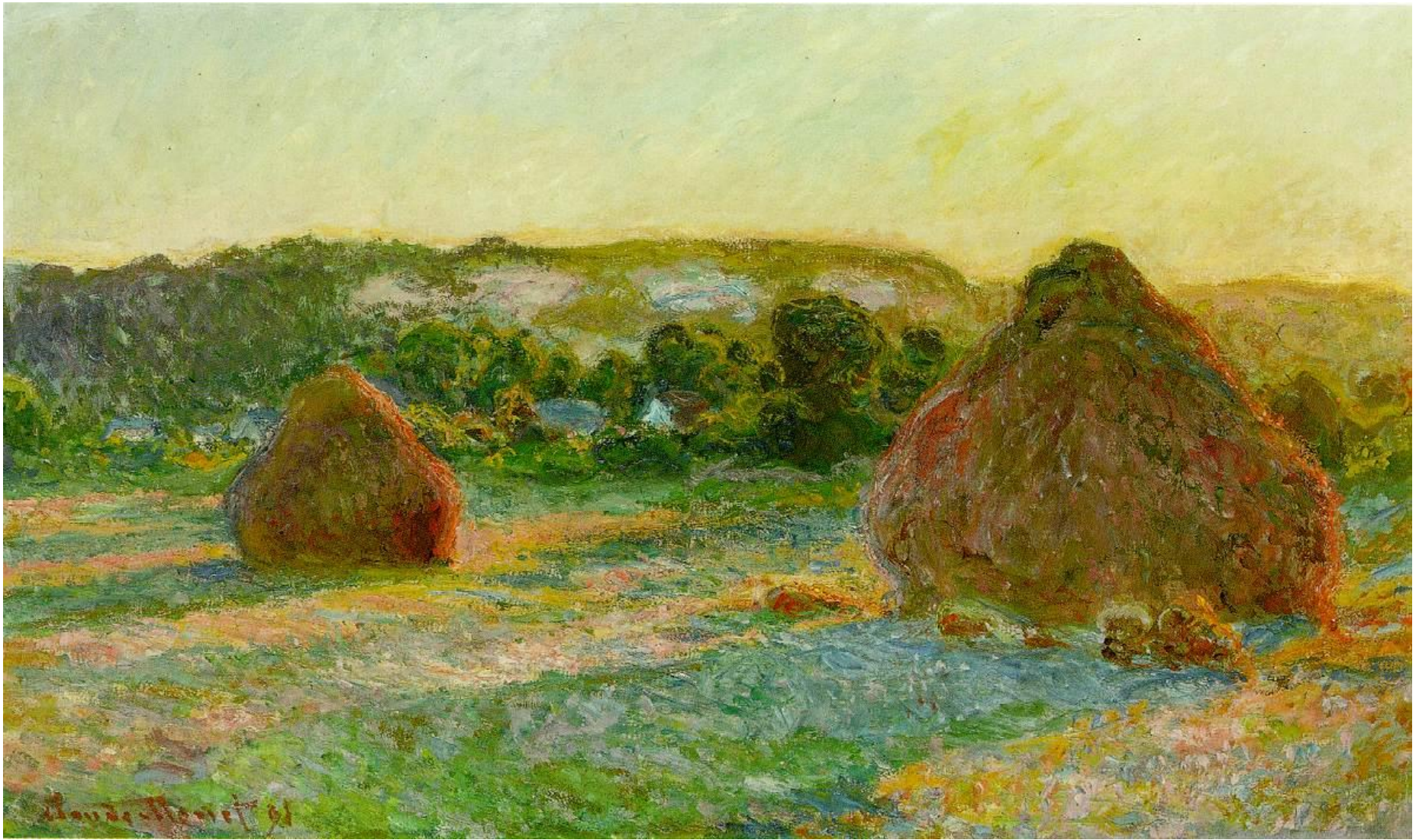
Houses of Parliament



Water lilies (The clouds)



Water lilies



Wheatstacks (The end of summer)



Autumn

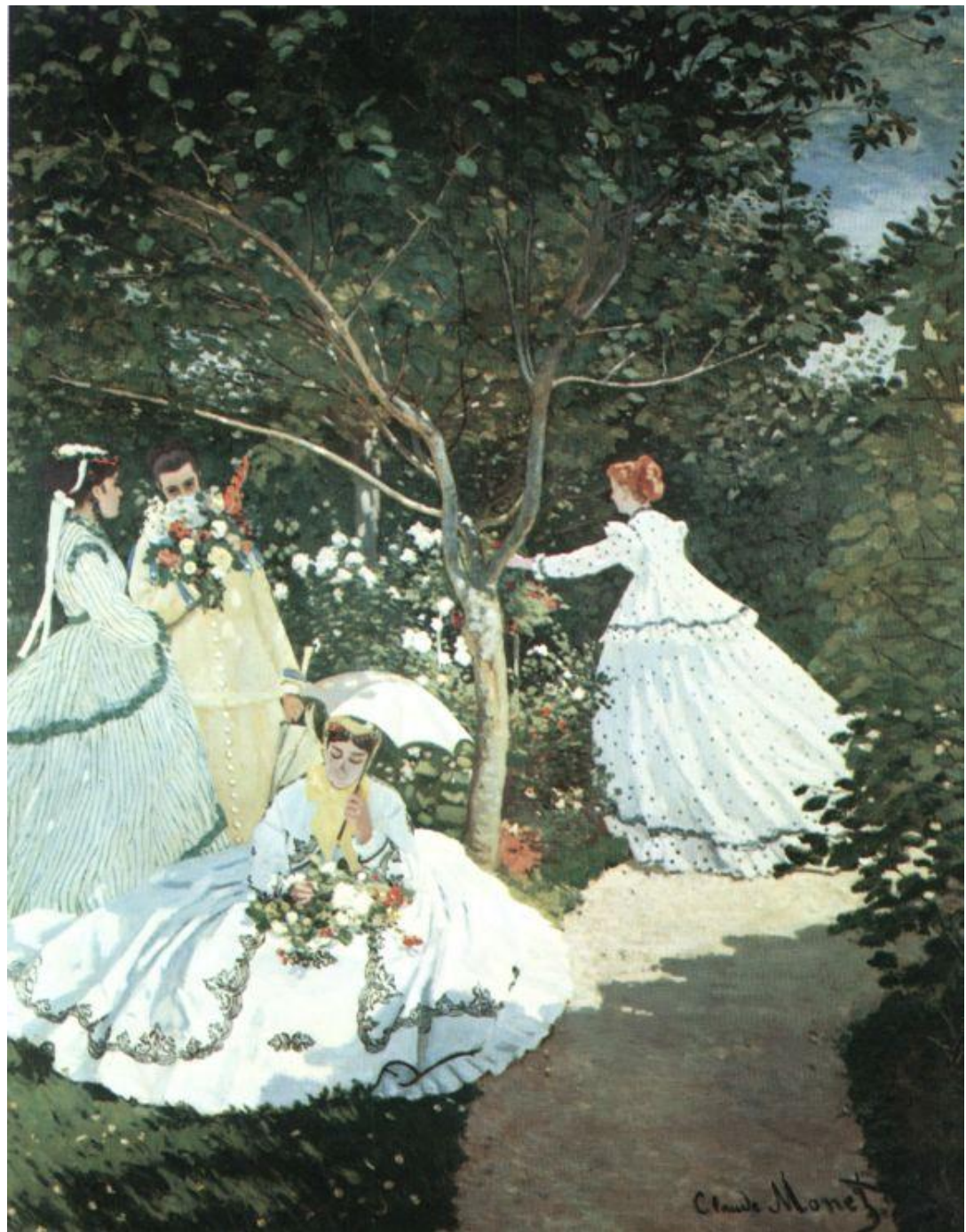


The red kerchief portrait of Camille Monet



Bathing at La Grenouillere

Women in the garden



Sunflowers





The beach at Sainte-Adresse



The Bridge at Argenteuil



The Corniche of Monaco



Impression: sunrise



Regatta at Argenteuil