

Presentation on the topic “John Constable”

On a presentation made by pupils of 10 classes:

Vika Kurash,
Olena Byzymenko



John Constable, one of the greatest landscape painters, was born in Sufford, on June 11, 1776.

He was the son of a wealthy miller. He began to take interest in landscape painting while he was at grammar school. His father did not favor art as a profession. In 1795 it went to study painting to London. In 1799 Constable entered the Royal Academy School in London.



Constable was a realist. He put into his landscape cattle, horses, the people working there. In England Constable never received the recognition that he felt he was due. The French were the first to acclaim Constable publicly. Constable may truly be considered the father of modern landscape painting.

The most notable works of Constable are “Flat ford Mill”, “The White Horse”, “The Hay Wain”, “Waterloo Bridge”, “From Whitehall stairs” and others.



“Flat ford Mill”, 1817



John Constable, *The White Horse*, 1819, Oil on canvas, 131.4 x 188.3 cm, Copyright The Frick Collection, New York

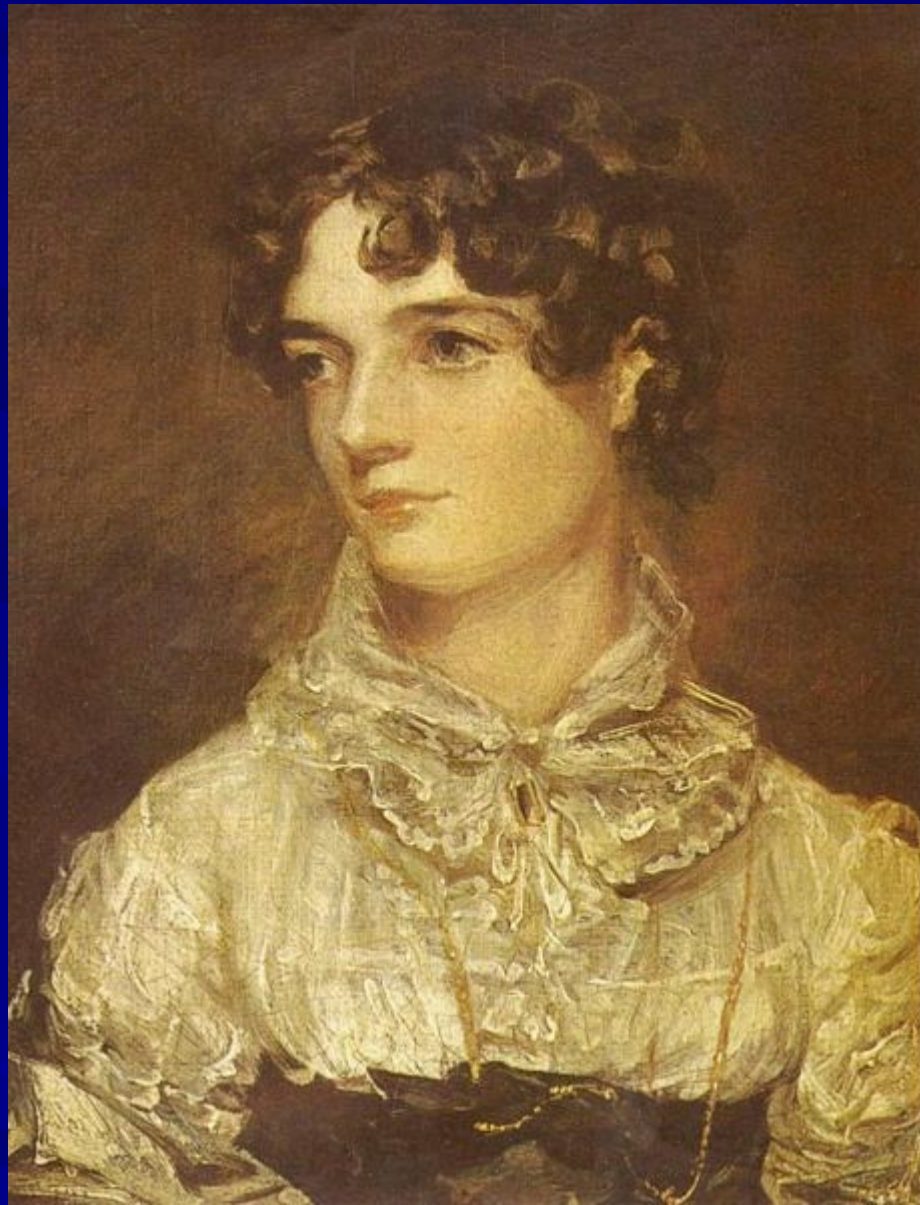
The white horse, 1819



“The Hay Wain”, 1802



“Waterloo Bridge”, 1817



“Maria Bicknell's portrait”, 1816



“View of a cathedral in Salisbury”,
1823



“Lock”, 1821



“Sea coast in Brighton”, 1824

Thank you for your
attention!!!

