

Prince Edward Island



Etymology

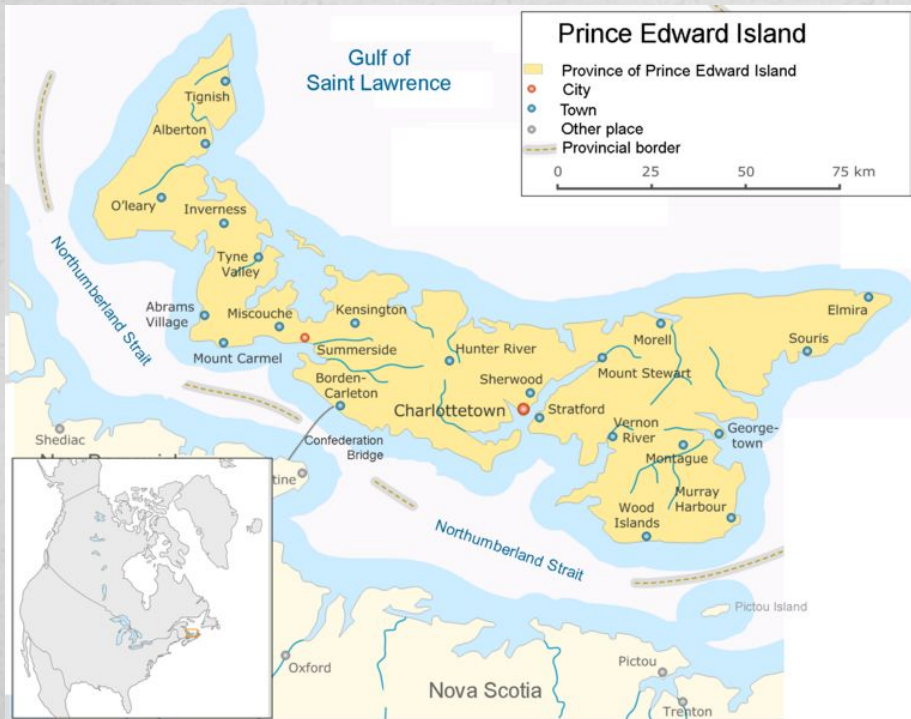
The island was named for Prince Edward, Duke of Kent and Strathearn (1767–1820), the fourth son of King George III and the father of Queen Victoria.



The Prince Edward

Geography

Prince Edward Island is located in the Gulf of St. Lawrence, west of Cape Breton Island, north of the Nova Scotia peninsula, and east of New Brunswick. Its southern shore bounds the Northumberland Strait.





The coast of Prince Edward Island around
Cavendish



The coast of Prince Edward Island around
Cavendish



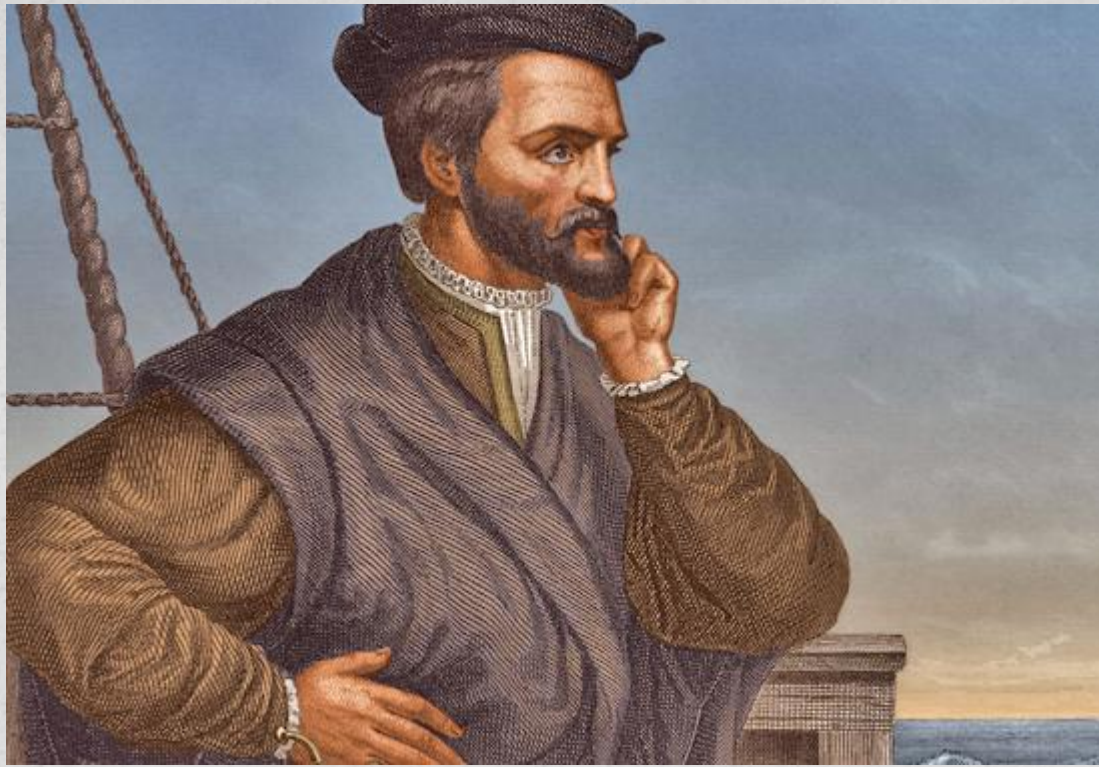
The landward side of sand dunes
in Cavendish

History

Before the influx of Europeans, the Mi'kmaq people inhabited Prince Edward Island. They named the Island *Epekwitk*, meaning "resting on the waves"; Europeans represented the pronunciation as *Abegweit*.

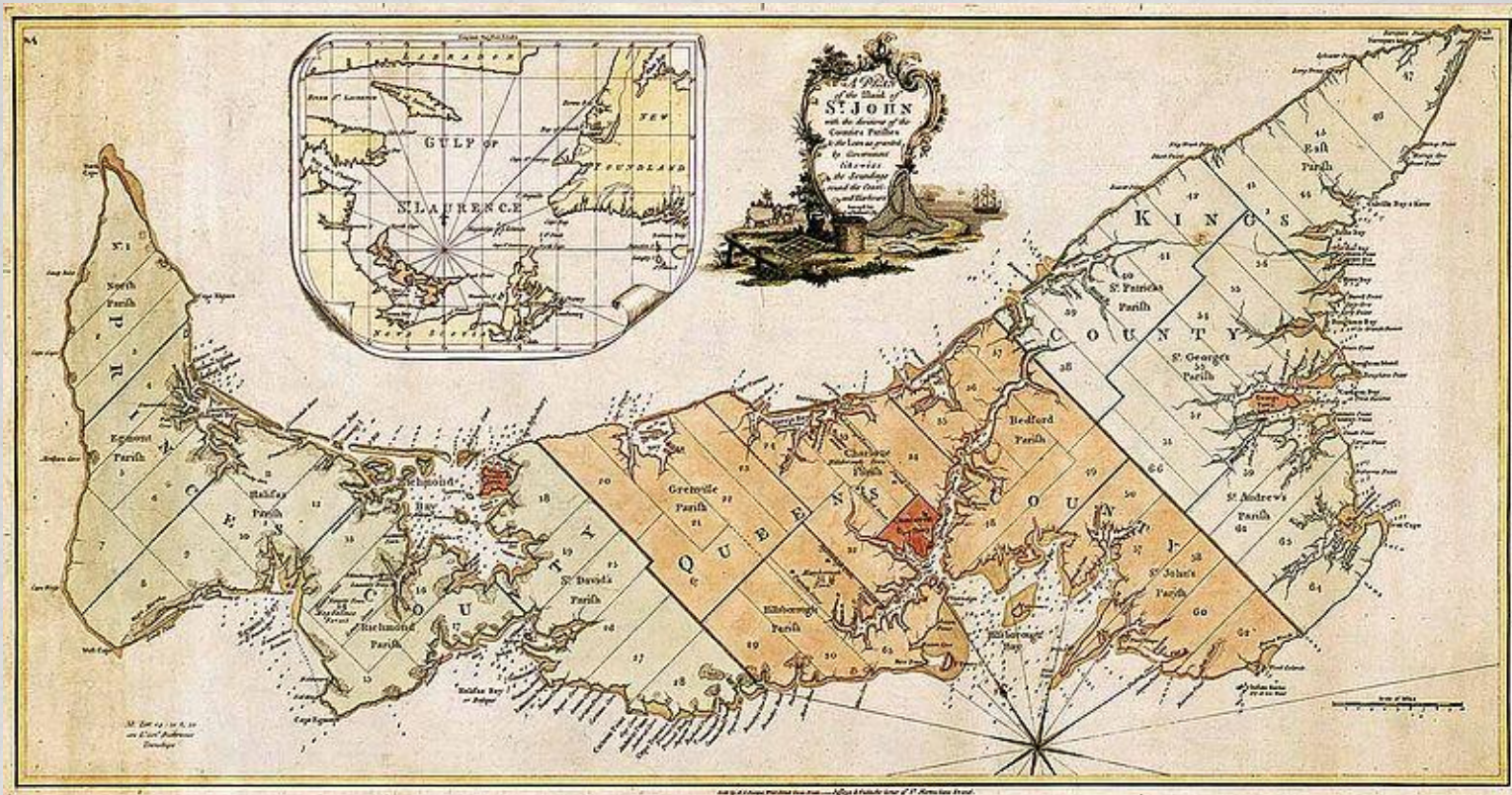


Mi'kmaq People



In 1534, Jacques Cartier was the first European to see the island.

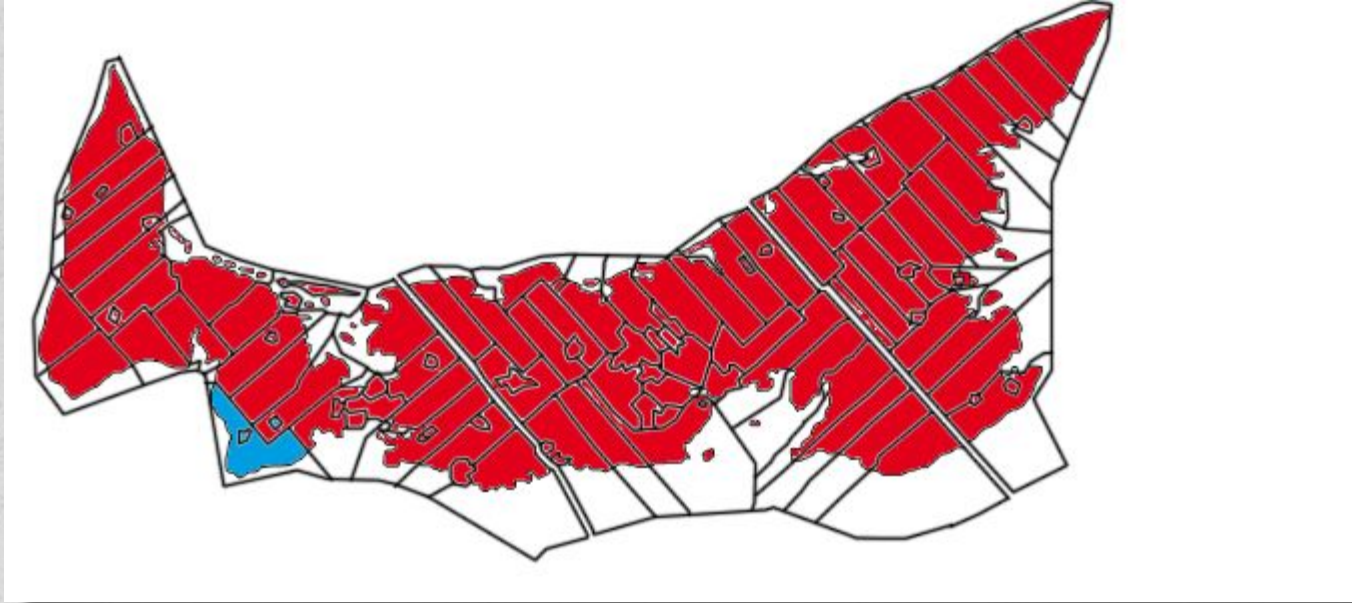
- In 1603, it was named Île St. Jean by Samuel de Champlain
- The British seized Île St. Jean in 1745 and held it for three years.
- In 1769, it was made a separate colony, with Charlottetown as capital.
- In 1864, the colonial conference that eventually led to Canadian confederation (1867) was held in Charlottetown. Prince Edward Island, however, did not join the confederation until 1873



Prince Edward Island map 1874

Demography

According to the 2001 Canadian Census, the largest ethnic group consists of people of Scottish descent (38.0%), followed by English (28.7%), Irish (27.9%), French (21.3%), German (4.0%), and Dutch (3.1%) descent.



Mother tongue in Prince Edward Island (red: English, blue: French).

Government and politics

Prince Edward Island has a high level of political representation, with four Members of Parliament, four Senators, 27 Members of the Legislative Assembly and two cities, seven towns and sixty incorporated rural communities yielding over five hundred municipal councilors and mayors

Economy

The provincial economy is dominated by the seasonal industries of agriculture, tourism, and the fishery. The province is limited in terms of heavy industry and manufacturing.



Fisheries form one of the major industries of Prince Edward Island.



Farmland on Prince Edward Island.

Education

Prince Edward Island is home to one university, the University of Prince Edward Island (UPEI), located in the city of Charlottetown.



University of Prince Edward Island

- Prince Edward Island is also home to Maritime Christian College, the only Bible college in the Maritimes
- Holland College is the provincial community college, with campuses across the province, including specialized facilities.



Holland College

Notable people



Milton Acorn



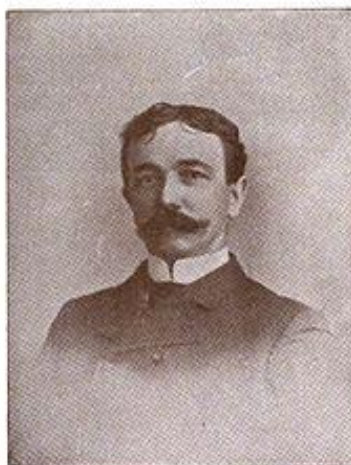
Amber Dawn MacArthur



Adam McQuaid



Brad Richards



*my best man
James Jeffrey Roche*

James Jeffrey Roche



Steve Ott

THANK YOU FOR WATCHING!

