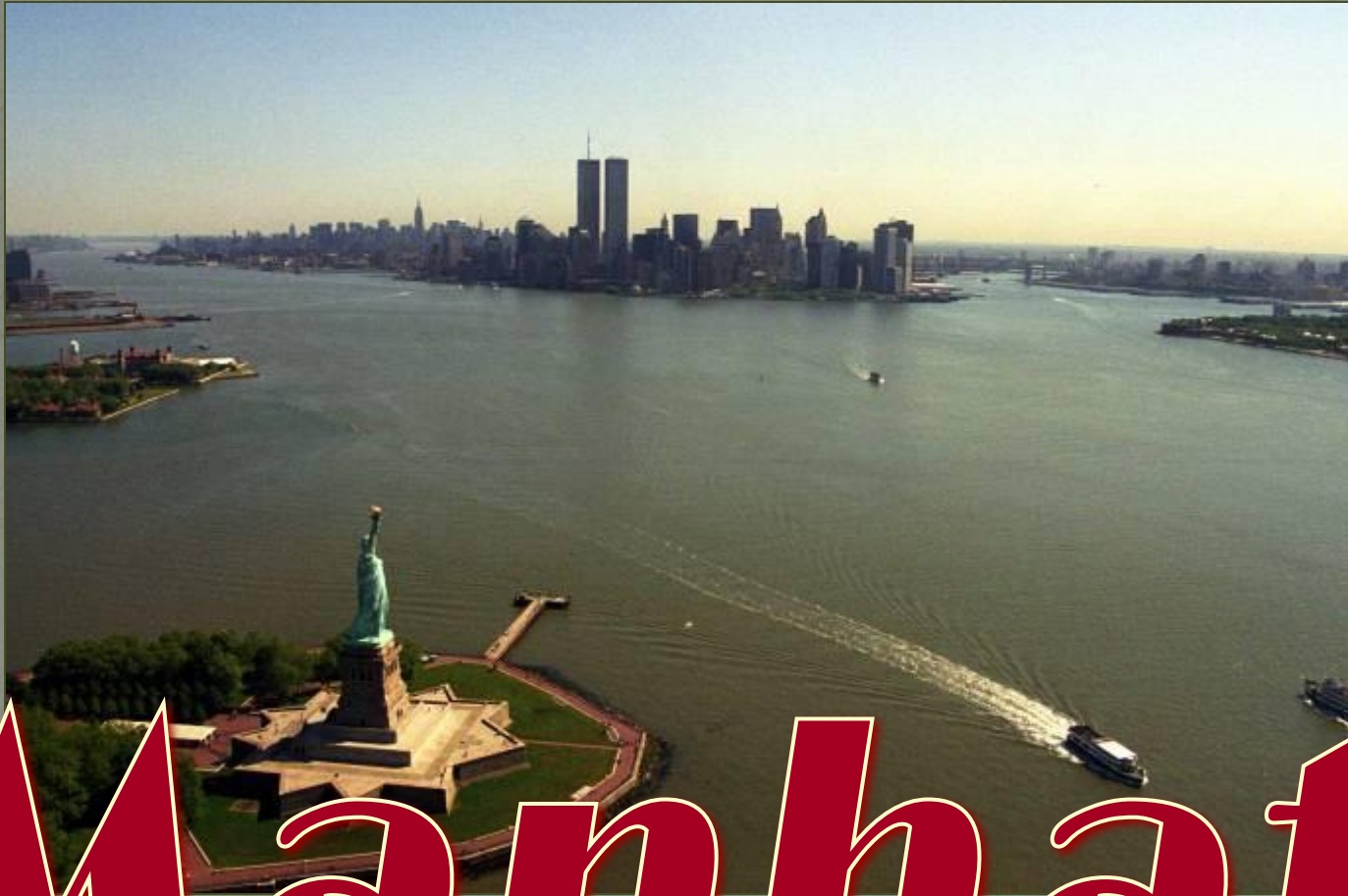


# NEW YORK CITY



*Manhattan*



New York City is a city in the southern end of the state of New York, and is the most populous city in the United States of America. New York City is a global economic center, with its business, finance, trading, law, and media organizations influential worldwide. The city is also an important cultural center, with many museums, galleries, and performance venues. Home of the United Nations, the city is a hub for international diplomacy. With over 8.2 million residents within an area of 322 square miles (830 km<sup>2</sup>), New York City has the highest population density of major cities in the United States. The New York metropolitan area, with a population of 18.8 million, ranks among the largest urban areas in the world.

Manhattan



Bronx



Staten Island



Brooklyn



Queens







New York City is comprised of five boroughs, an unusual form of government used to administer the five constituent counties that make up the city.

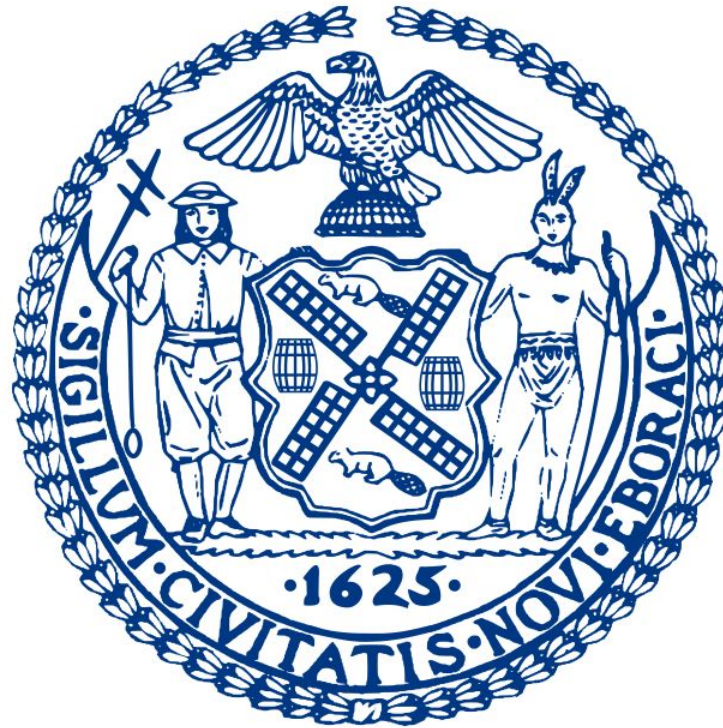
**The five boroughs:**

**1: Manhattan,**

**2: Brooklyn,**

**3: Queens,**

**4: Bronx, 5: Staten  
Island**









**Manhattan** (pop. 1,593,200) is the most densely populated borough of New York City and home to most of the city's skyscrapers. The borough contains the major business and financial centers of the city and many cultural attractions, including numerous museums, the Broadway theatre district and Madison Square Garden. Manhattan is loosely divided into **Downtown**, **Midtown**, and **Uptown** regions. Uptown Manhattan is divided by Central Park into the Upper East Side and the Upper West Side, and above the park is Harlem.





# Wall Street

**Wall Street** is the major financial centre of the U. S. and symbolizes the money market and financiers of the U.S. Wall Street was called so because of a wall which extended along the street in Dutch times. It was built about 1650 from river to river (the Hudson and the East River) to protect the small colony living south of this street from attacks by Indians. Later the wall was removed, but the name remained.





# City Hall

**New York City Hall** is the seat of the government of New York City. The building houses the office of the Mayor of New York City and the chambers of the New York City Council. The building is the oldest City Hall in the United States that still houses its original governmental functions. Constructed from 1803 to 1812, New York City Hall is a National Historic Landmark and is listed on the National Register of Historic Places.

**Governor's Room**



**Blue Room**





# World Trade Center

When the World Trade Center towers were completed in 1973 many felt them to be sterile monstrosities, even though they were the world's tallest buildings at that time. But most New Yorkers became fond of "The Twin Towers" and after the initial horror for the loss of life in the September 11, 2001 terrorist attacks there came great sadness for the loss of the buildings. The complex, located in the heart of New York City's downtown financial district, contained 1.24 million m<sup>2</sup> of office space, almost four percent of Manhattan's entire office inventory.





# Manicipal Building

The **Manhattan Municipal Building** is a 40-story building built to accommodate increased governmental space demands after the 1898 consolidation of New York City from The Five Boroughs. Standing 580 feet (177 m) tall, its highest point is the second largest statue in Manhattan. The Municipal Building is one of the largest governmental buildings in the world. Thirteen civic agencies of New York City and a public radio station are located in the building, and 28,000 New Yorkers are married inside of it each year. There are 25 floors of work space (served by 33 elevators), with an additional 15 stories in the tower.



**Arch of Constantine**



**Civic Fame**



# Washington Square Park

**Washington Square Park** is one of the best-known of New York City's 1,700 public parks. At 39,000 m<sup>2</sup>, it is a major landmark in the Manhattan neighborhood of Greenwich Village, as well as a popular meeting place and center for cultural activity. It is operated by the New York City Department of Parks and Recreation.

Most of the buildings surrounding the park now belong to New York University. The university rents the park for its graduation ceremonies, and uses the Arch as a symbol.

Caribaldi Monument





# Greenwich Village

Jefferson Market Library



**Greenwich Village** is formerly known as the "Bohemian quarters" of the literary and artistic world. Its many quaint streets, curio shops and outdoor shows maintain a continuous sightseeing appeal. Artists, writers, sculptors, composers, poets, actors make their homes in the Village. The Outdoor Art Exhibits are a colourful affair held twice a year in the Village.





# Chinatown

The **Chinatown** is an ethnic enclave with a large population of Chinese immigrants, similar to other Chinatown districts in American cities. By the 1980s it became the largest enclave of Chinese immigrants in the Western Hemisphere. By 1870, there was a Chinese population of 200. By the time the Chinese Exclusion Act of 1882 was passed, the population was up to 2,000 residents. By 1900, there were 7,000 Chinese residents, but fewer than 200 Chinese women.





# Broadway

The city's 39 largest theatres are collectively known as "**Broadway**". Broadway theatre is the most prestigious form of professional theatre in the U.S., as well as the most well known to the general public and most lucrative for the performers, technicians and others involved in putting on the shows.





# Woolworth Building

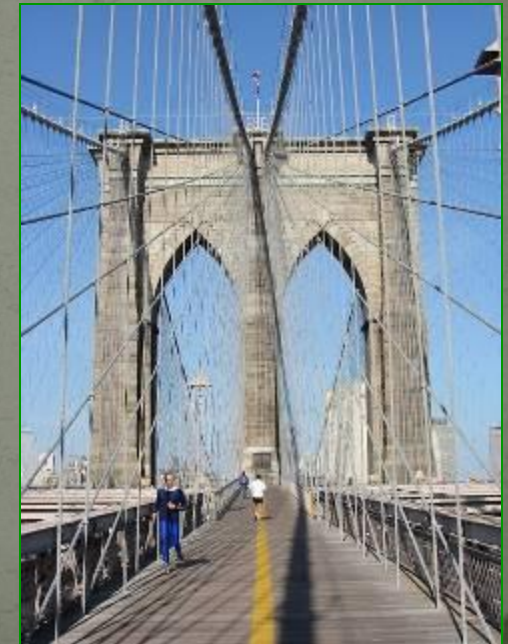
The **Woolworth Building**, at 55 stories, is one of the oldest and one of the most famous skyscrapers in New York City. With splendor and a resemblance to European Gothic cathedrals, the structure was labeled the Cathedral of Commerce. The structure has a long association with higher education, housing a number of Fordham University schools in the early 20th century. Today the building houses, among other tenants, Control Group Inc, and the New York University School of Continuing and Professional Studies' Center for Global Affairs.





# Brooklyn Bridge

The Brooklyn Bridge is one of the oldest suspension bridges in the United States, stretches 1825 m over the East River connecting the Manhattan and Brooklyn. On completion, it was the largest suspension bridge in the world and the first steel-wire suspension bridge. The bridge cost \$15.1 million to build and approximately 27 people died during its construction. A week after the opening, on May 30 1883 a rumor that the Bridge was going to break down caused a stampede which crushed and then killed twelve people.





# Pennsylvania Station

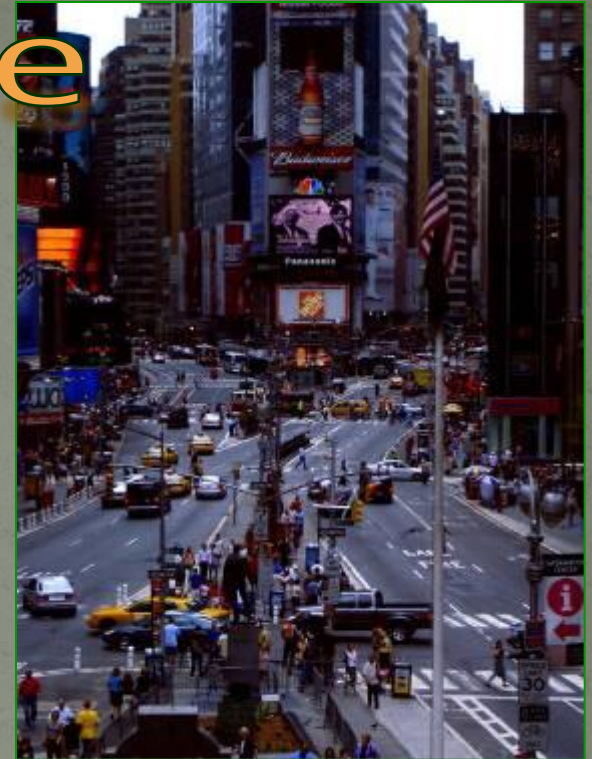
**Pennsylvania Station** is the major intercity rail station and a major commuter rail hub. The station is located in the underground levels of Pennsylvania Plaza. Penn Station is at the center of the Northeast Corridor, an electrified passenger rail line extending south to Washington, D.C. and north to Boston. The station saw 4.3 million Amtrak boardings in 2004, more than double the traffic at the next busiest station, 30th Street Station in Philadelphia.





# Times Square

**Times Square** is at the junction of Broadway and Seventh Avenue. Times Square consists of the blocks between Sixth and Eighth Avenues from east to west, and West 40th and West 53rd Streets from south to north, making up the western part of the commercial area of Midtown Manhattan. Smaller than Red Square in Moscow or Trafalgar Square in London, Times Square has nonetheless achieved the status of an iconic world landmark and has become a symbol of its home city. Times Square is principally defined by its animated, digital advertisements.





# Empire State Building

The Empire State Building rises to 381 m at the 102nd floor, and its full structural height (including broadcast antenna) reaches 443 m. The building has 85 stories of commercial and office space and an indoor and outdoor observation deck on the 86th floor. The remaining 16 stories represent the spire, which is capped by a 102nd floor observatory, and atop the spire is an antenna topped off with a lightning rod. The Empire State Building is the first building to have more than 100 floors. It has 6,500 windows, 73 elevators and there are 1,860 steps from street level to the 102nd floor. It has a total floor area of approximately 254,000 m<sup>2</sup>.







The New York Public Library

# Public Library



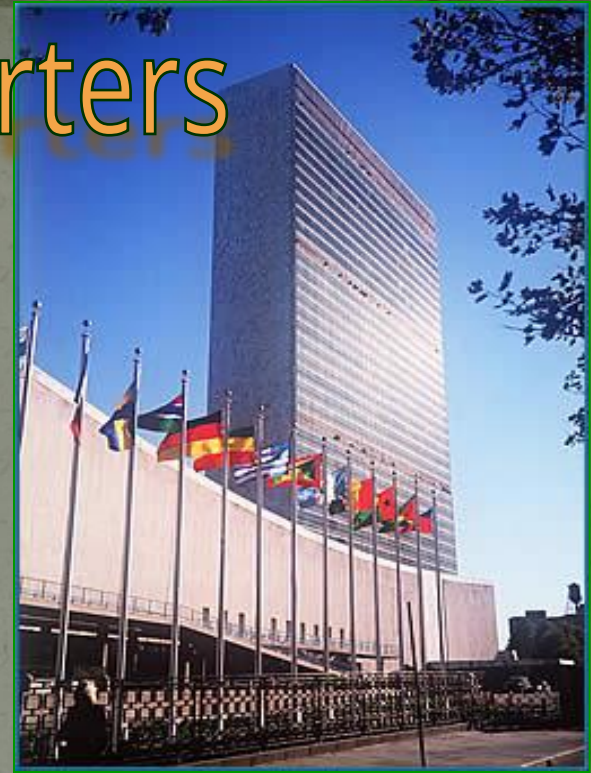
The New York Public Library (NYPL) is one of the leading public libraries of the world and is one of America's most significant research libraries. It is composed of a very large circulating public library system combined with a very large non-lending research library system. NYPL consists of 86 libraries in the Bronx, Manhattan, and Staten Island: four non-lending research libraries, four main lending libraries, a library for the blind and physically handicapped, and 77 neighborhood branch libraries. All libraries in the NYPL system may be used free of charge by all visitors.





# United Nations Headquarters

The United Nations Headquarters occupies six block area. The 39-story Secretariat Building houses offices of about 5,000 persons of different nationalities who form the administrative organ of the United Nations. The shallow-domed General Assembly is the meeting-place of the representatives of the member nations. The regular session is held annually beginning in the fall .





GE Building



# Rockefeller Center

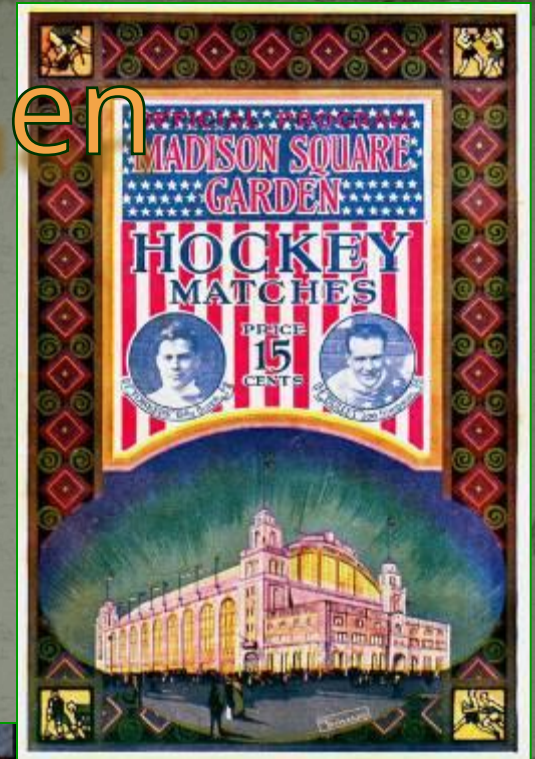
**Rockefeller Center** is "a city within a city". It is the largest private building project ever undertaken in modern times. It is a complex of 19 commercial buildings with its own restaurants, stores, theatres, post-offices. In winter its plaza is transformed from an outdoor restaurant to an ice-skating pond. Radio City Music Hall, where some of the nation's most popular movies have their first showing along with a spectacular stage show, is one of New York's greatest attractions.





# Madison Square Garden

**Madison Square Garden** has been the name of four arenas in New York City. It is also the name of the entity which owns the arena and several of the professional sports franchises which play there. There have been four incarnations of the arena. It is the largest indoor stadium in the city, home of all kinds of sports, public events and elaborate entertainments.



**Basketball court**

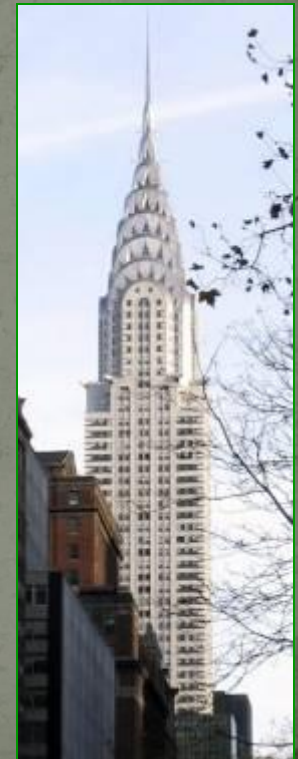


# Chrysler Building

The Chrysler Building is an Art Deco skyscraper. It has 77 stories. Standing 319 meters high, it was originally built to house the Chrysler Corporation. The spire, measuring 58.4 meters long and composed of Nirossta stainless steel was hoisted to the top of the building on October 23, 1929. The lobby is similarly elegant and a must see for tourists. When the building first opened, it contained a public viewing gallery near the top, which a few years later was changed into a restaurant. The former observation floor became a private dining room called the Cloud Club. The very top stories of the building are narrow with low sloped ceilings, useful only to hold radio broadcasting and other mechanical and electrical equipment.



Elevator





# Museum of Modern Art

The Museum of Modern Art (MoMA) is a preeminent art museum. It is regarded as the leading museum of modern art in the world. Its collection includes works of architecture and design, drawings, painting and sculpture, photography, prints and illustrated books, film, and media. MoMA's library and archives are a major resource and hold over 300,000 books, artist books, and periodicals, as well as individual files on more than 70,000 artists. The archives contain primary source material related to the history of modern and contemporary art.







# St. Patrick's Cathed

**St. Patrick's Cathedral** is the largest decorated Neo-Gothic-style Catholic cathedral in North America. It is the seat of the archbishop of the Roman Catholic Archdiocese of New York, and a parish church, located just across the street from Rockefeller Center. The eight deceased archbishops of New York, six of them Cardinals, are buried in a crypt under the former high altar, visible from the entrance to the Lady Chapel in the rear of the cathedral.





# Central Park

Central Park is a large public park (3.41 km). With about twenty-five million visitors annually, Central Park is the most visited city park in the United States, and its appearance in many movies and television shows has made it among the most famous city parks in the world. Central Park contains several artificial lakes, extensive walking tracks, two ice-skating rinks, a wildlife sanctuary, and grassy areas and playgrounds for children. The park is a popular oasis for migrating birds.





Philharmonic Hall



# Lincoln Center

The Lincoln Center for the Performing Arts, which includes Jazz at Lincoln Center, the Metropolitan Opera, the New York City Opera, the New York Philharmonic, the New York City Ballet, the Vivian Beaumont Theatre, The Juilliard School and Alice Tully Hall, is the largest performing arts center in the United States.

New York State Theater



Metropolitan Opera House





# Solomon R. Guggenheim Museum

The Solomon R. Guggenheim Museum, founded in 1937, is a modern art museum. It is the last major work of Frank Lloyd Wright, one of the world's most prominent and influential architects. From the street, the building looks approximately like a white ribbon curled into a cylindrical stack, slightly wider at the top than the bottom. Paintings are displayed along the walls of the spiral and also in viewing rooms found at stages along the way. The Guggenheim was founded to showcase avant-garde art by early modernists such as Wassily Kandinsky and Piet Mondrian.





# Museum of Natural Hist



The American Museum of Natural History has a scientific staff of more than 200, and sponsors over 100 special field expeditions each year. The Museum boasts habitat groups of African, Asian and North American mammals, the "Star of India", the largest blue sapphire in the world, an interesting illustration of the growth and development of man. The Hayden Planetarium, connected to the museum, is now part of the Rose Center for Earth and Space, housed in a glass cube containing the spherical Space Theater.



Day 117



Planetarium

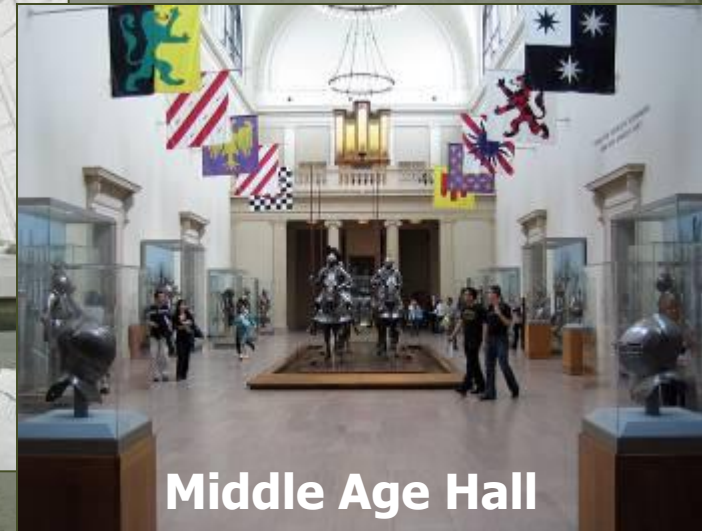


# Metropolitan Museum of Art

The Metropolitan Museum of Art is one of the world's largest and most important art museums. The main building is located on the eastern edge of Central Park. The Met's permanent collection contains more than two million works of art, divided into nineteen curatorial departments. In addition to its permanent exhibitions, the Met organizes and hosts large traveling shows throughout the year.



**Roman Statue**





# The Cloisters

The Cloisters is the branch of the Metropolitan Museum of Art dedicated to the art and architecture of the European middle ages. The Cloisters include the museum building and the adjacent 16,000 m<sup>2</sup>. The Cloisters collection contains approximately five thousand European medieval works of art, with a particular emphasis on pieces dating from the twelfth through the fifteen centuries.



Crucifixion



Cloisters-garden

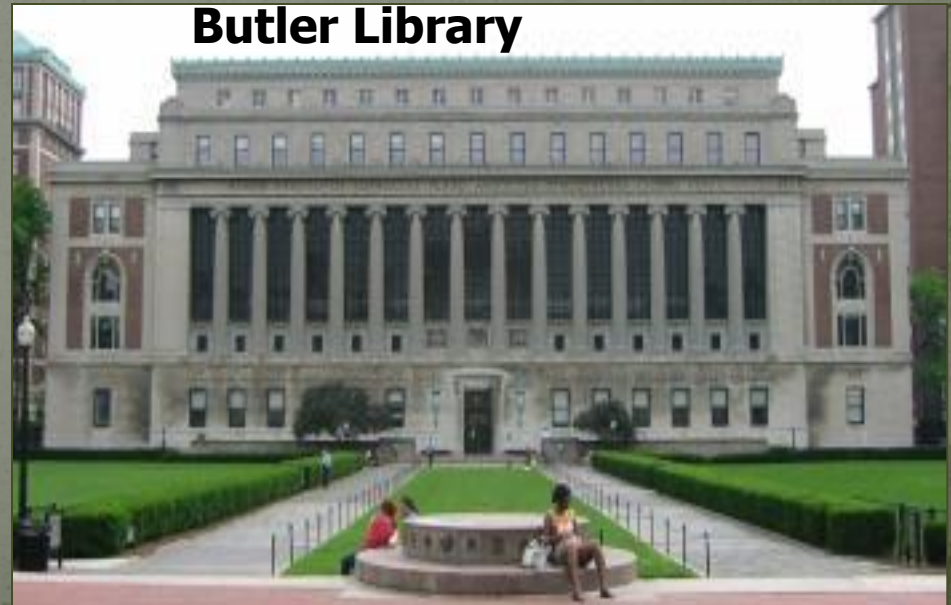






# Columbia University

**Columbia University** is a private research university in the United States. It has the most Nobel Prize affiliations of any institution in the USA. It is home to the prestigious Pulitzer Prize, which, for over a century, has rewarded outstanding achievement in journalism, literature and music. It has been the birthplace of FM radio, the first American university to offer anthropology and political science as academic disciplines, and where the foundation of modern genetics was discovered. Its Morningside Heights campus was the first North American site where the uranium atom was split.



**Butler Library**



**Thank you for watching!**

**Presentation was created  
by student form 11-B  
Michael Prysyazhnyy**

Teacher Irina Georgievna Yasinska