

A scenic landscape of a lake in Wales. The foreground shows a calm body of water reflecting the sky and the surrounding green hills. The middle ground features rolling green hills with some evergreen trees. The background is a clear blue sky with scattered white clouds. The word "Wales" is written in a large, white, cursive font across the upper half of the image.

Wales



**Which country does
Wales border on the
east side?**



England



The Capital of
Wales.

A scenic view of the Cardiff waterfront. In the foreground, a red brick promenade with black metal stanchions and chains runs along the water's edge. The water is calm, reflecting the sky and buildings. In the background, a large, ornate red brick building with a prominent clock tower stands out against a blue sky with scattered white clouds. Other buildings and a stone wall are visible along the waterfront.

Cardiff

The State system of Wales.



Parliamentary democracy

The background of the image is a close-up of a blue fabric, possibly silk or satin, with deep, flowing folds and highlights that create a sense of texture and depth. The color is a rich, slightly varied blue, with lighter areas where the fabric catches the light and darker shadows in the creases.

The official
language of Wales.

A serene night scene of a lake with a light reflecting on the water, surrounded by trees and rocks. The image has a blue tint. The text "English and Welsh" is overlaid in white, stylized font.

English and Welsh

Who is the head of
Wales?

Prince Charles (Welsh)



**Which country was
Wales united with
in 1536?**

A scenic landscape at sunset or sunrise. The sky is a gradient of soft pink and orange, with the sun visible as a bright yellow-orange orb on the horizon. In the foreground, there is a field of tall, dry grass. A wooden fence with a gate is visible in the middle ground. In the background, there are silhouettes of trees and a distant building.

England

This city is located
in the county of
Gwynedd in the north
of Wales, near the
coast of the Irish
Sea.

Bangor



**City is the capital
city for book
lovers. It's called
'Book town'.**

Heh-on-Wye



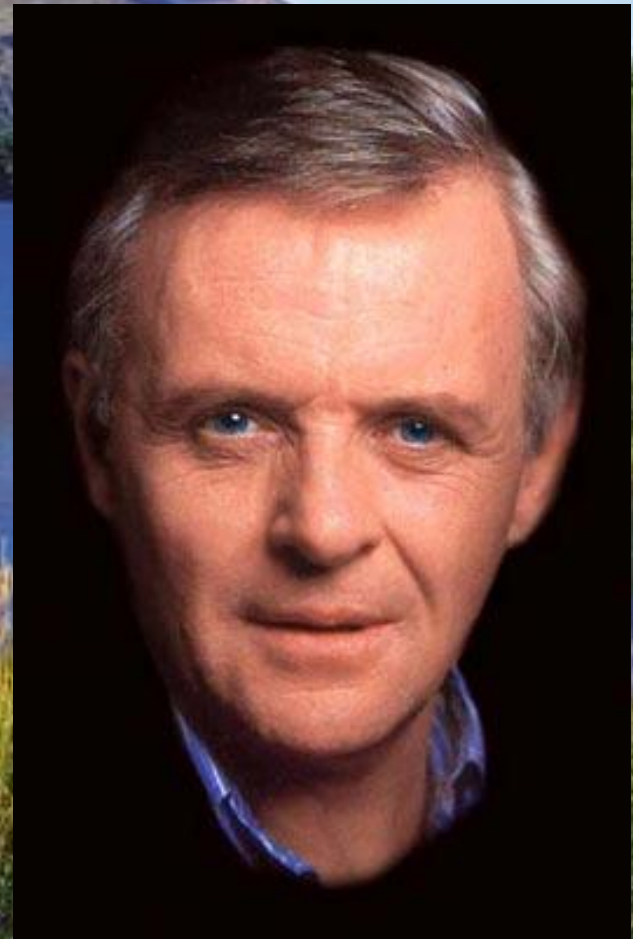
The outstanding
English footballer
midfielder.

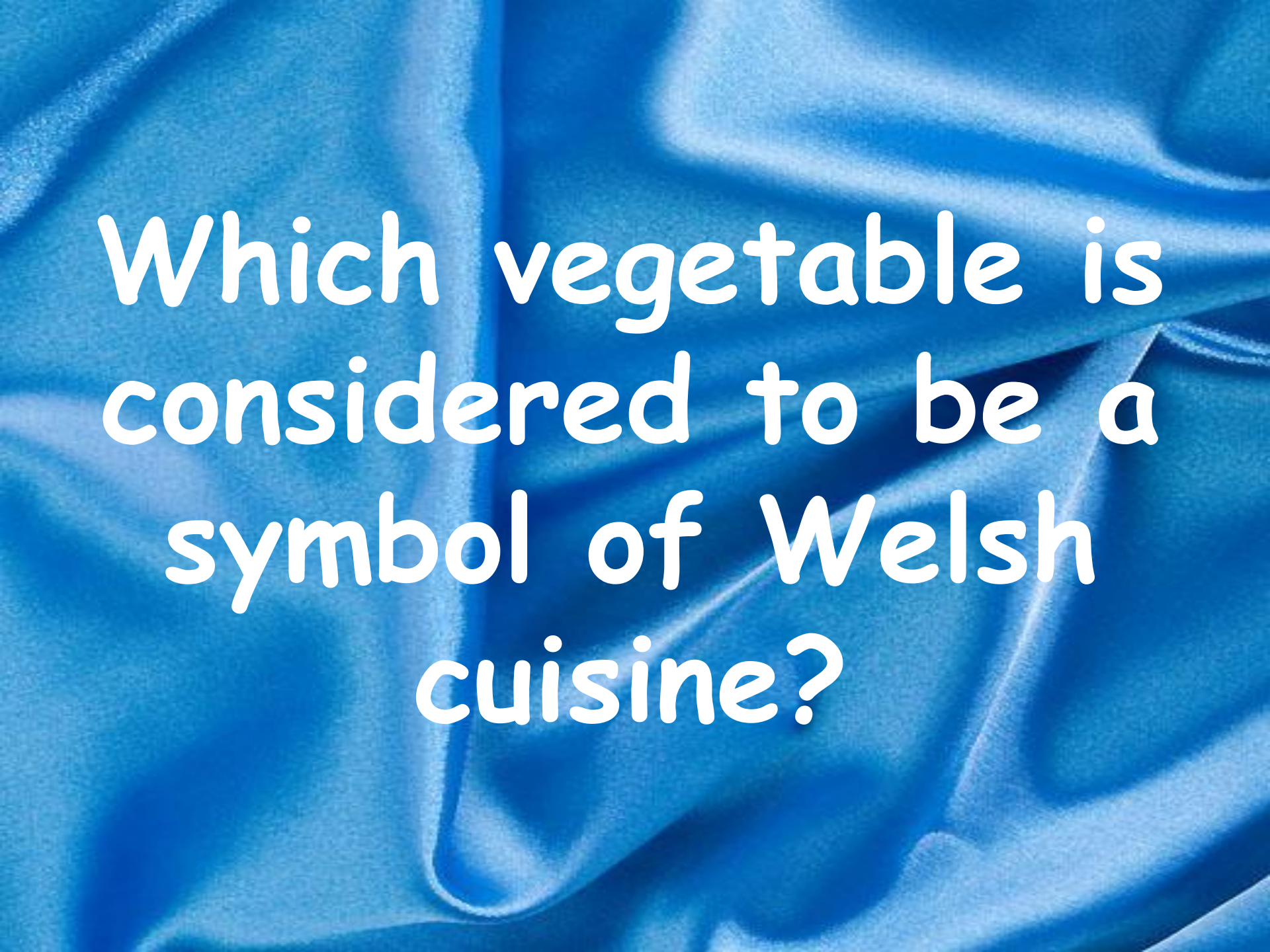
Ryan Giggs



The actor who
starred in the
movies: "The Silence
of the Lambs,"
"Hannibal," The Mask
of Zorro. "

Anthony Hopkins



The background of the image is a close-up of a blue fabric, possibly silk or satin, with deep, flowing folds and highlights that create a sense of texture and depth. The lighting is soft, emphasizing the curves and creases of the material.

Which vegetable is
considered to be a
symbol of Welsh
cuisine?



Leek

**What kind of meat
is preferred in
Wales?**

Lamb



**What is traditional
Welsh sport?**



Knapan

What are other
popular kinds of
sport in Wales?



Rugby,
football,
cricket



**The main national
symbol of Wales.**

Dragon






The largest religious
tradition Wales.



Christianity

The famous Castle
of Wales.



Castle
"defensive
ring"

The background of the image is a close-up of a blue fabric, possibly silk or satin, with deep, flowing folds and highlights that create a sense of texture and depth. The color is a rich, slightly varied blue, with lighter areas where the fabric catches the light and darker areas in the shadows of the folds.

The name of
Welsh national
park.



**Brecon
brikons**

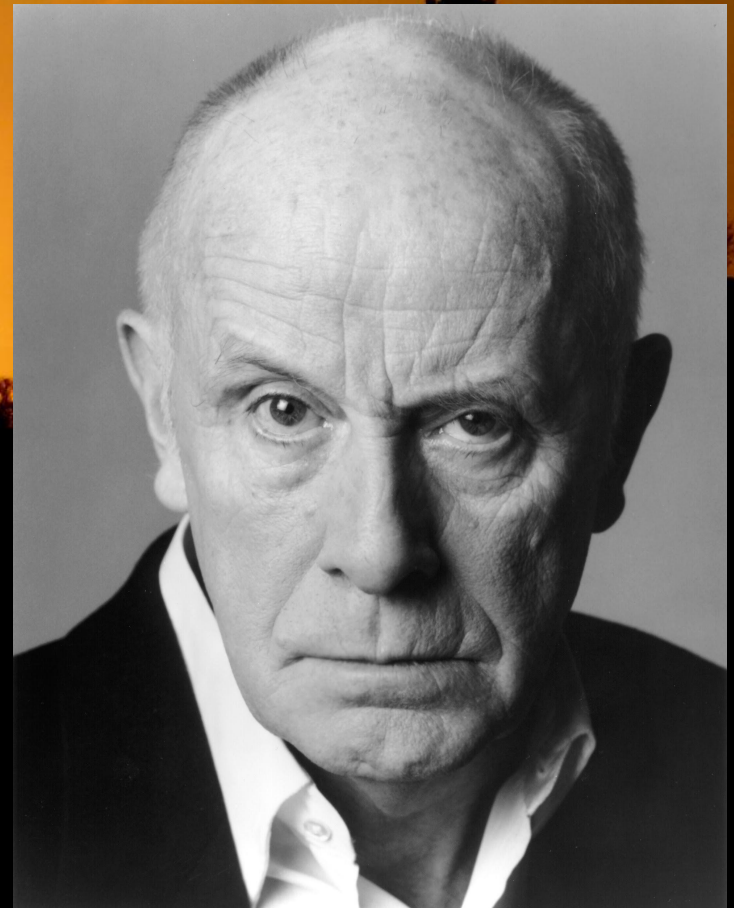
**What does the
word 'Wales'
mean?**

Songs Land

The image shows a vast, open landscape with rolling hills. The foreground and middle ground are covered in a mix of green grass and brown, rocky soil, suggesting a high-altitude or mountainous environment. The hills are rugged and steep, with some areas appearing more barren than others. In the background, more distant hills and mountains are visible under a clear, bright blue sky. The overall scene is one of natural beauty and tranquility. The text 'Songs Land' is prominently displayed in the center of the image in a large, bold, black font.

Valiysky Artist.

Richard Wilson



*Thank you for
your attention!*

