

**Garden dacha.**

# Plan:

- 1.Choosing and preparation of territory and its protection.
  - 2.Choosing of the material of paths and platforms.
  - 3.Small architectural forms.
  4. Kinds and laying– out of plants in the garden.
  - 5.Choosing plants.
  - 6.Choosing and planning of furniture in a garden.
- The conclusion.

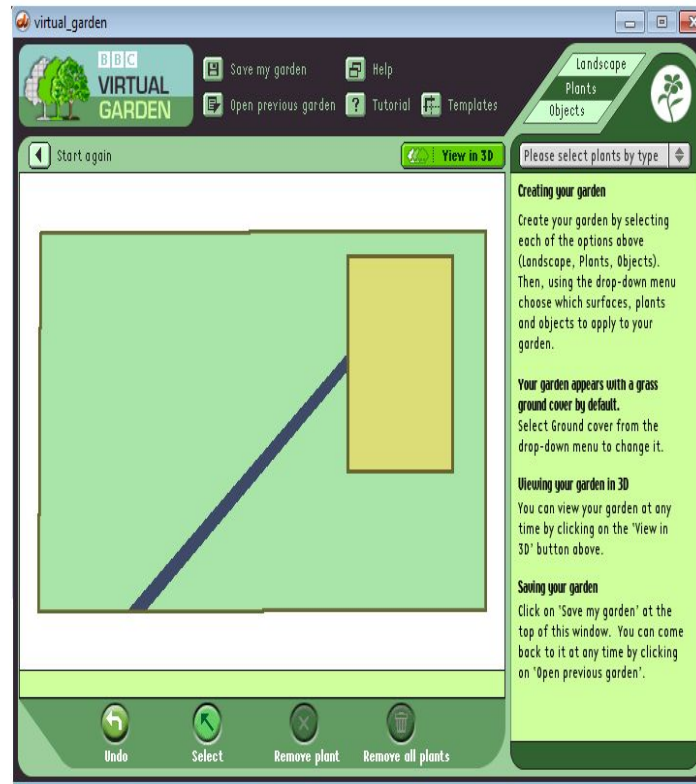
# 1.Choosing and preparation of territory and its protection.



- 1)The platform of territory looks as a rectangular.
- 2) Protection from a wooden fence.

## 2. Arrangement of paths and platforms. A choice of a material.

- 1) The platform for rest, is made from Desking (25sm).
- 2) Paths are applied from Patio ( slate).

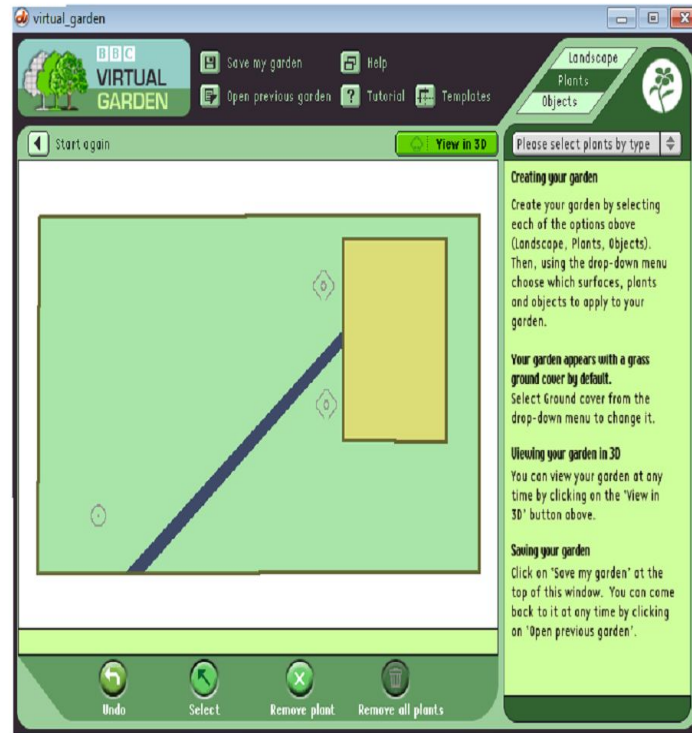




# 3.Small architectural forms.

I have chosen  
ornamental  
fountain them 2  
and spherical  
fountain.

The serve object  
for addition of  
originality of my  
garden.



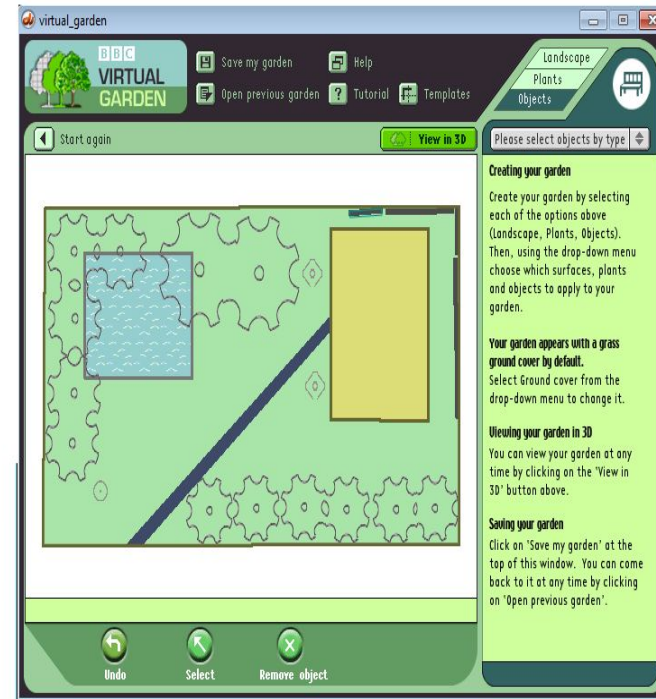


As I have added  
pool Modern  
pond.

## 4. Kinds and laying– out of plants in the garden.

Lay – out of a garden.

1)Arrangement of trees near a fence.





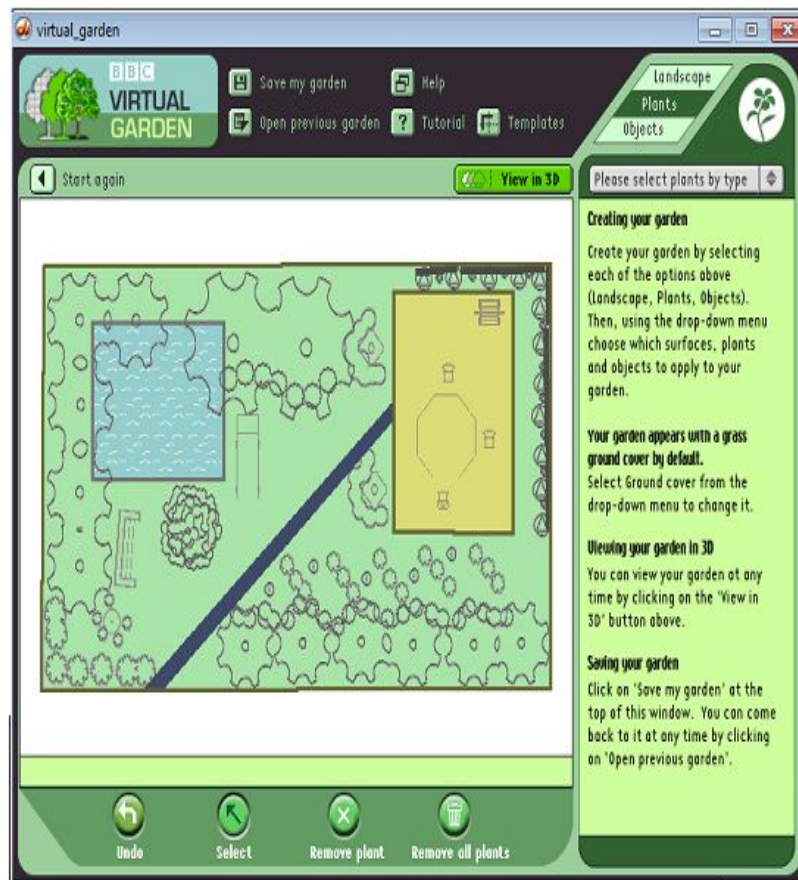
2) Arrangement of colors, near a platform for rest, near a bench and in other places, you will see.





### 3) Plants are:

- Biennials;
- Bulbs;
- Climbers;
- Deciduous plants;
- Evergreen plants;
- Ferns;
- Grosses;
- Half – handy annuals;
- Half – handy perennials;
- Hardy annuals;
- Hardy perennials;



# 5.Choosing plants.

For the garden I have chosen plants:

- 1.Osteospermum;
- 2.Nigella domascena
- 3.Tagetes erecta;
4. Labelia erinus;
- 5.Geranium «Jahnsan”s Blue”;
6. Festuca glausa;
- 7.Delphinium;
- 8.Jasminum officinale;
- 9.Rosa Galden Showers;
10. Tropaeolum majus;





# ● Osteospermum





Tagetes erecta



Labelia erinus





Geranium «Jahnsan”s Blue”



Festuca glauca





Delphinium



Jasminum officinale





Rosa Golden Showers



*Tropaeolum majus*

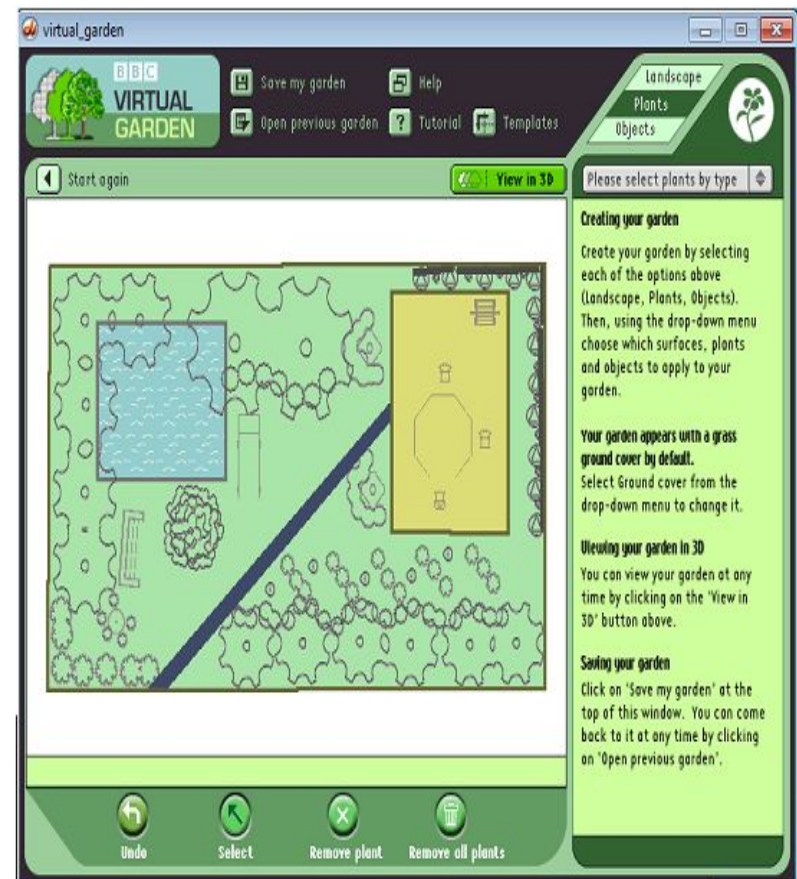




## 6.Choosing and planning of furniture in a garden.

Furniture for a garden  
I have chosen:

- 1) Bench;
- 2) Table;
- 3) Chairs.
- 4) Sunbed;
- 5) BBQ



**BBC**  
**VIRTUAL**  
**GARDEN**

Save my garden



Help



Open previous garden



Tutorial



Templates

Resize view

**Go back to plan view**

Look up

Look down

**Editing your garden**

Click on the 'Go back to plan view' button to edit your garden.

**Saving your garden**

Click on 'Save my garden' at the top of this window. You can come back to it at any time by clicking on 'Open previous garden'.

**Plant information**

View plant information by walking up to a plant and clicking on it until the plant's description appears in this panel.



**BBC**  
**VIRTUAL**  
**GARDEN**

Save my garden



Help



Open previous garden



Tutorial



Templates



Resize view

**Go back to plan view**

Look up

Look down

**Editing your garden**

Click on the 'Go back to plan view' button to edit your garden.

**Saving your garden**

Click on 'Save my garden' at the top of this window. You can come back to it at any time by clicking on 'Open previous garden'.

**Plant information**

View plant information by walking up to a plant and clicking on it until the plant's description appears in this panel.



BBC

VIRTUAL  
GARDEN

Save my garden



Help



Open previous garden



Tutorial



Templates

Resize view



Go back to plan view

**Editing your garden**

Click on the 'Go back to plan view' button to edit your garden.

**Saving your garden**

Click on 'Save my garden' at the top of this window. You can come back to it at any time by clicking on 'Open previous garden'.

**Plant information**

View plant information by walking up to a plant and clicking on it until the plant's description appears in this panel.

Look up

Look down





**BBC**  
**VIRTUAL**  
**GARDEN**

Save my garden



Help



Open previous garden



Tutorial



Templates



Resize view

**Go back to plan view**

Look up

Look down

**Editing your garden**

Click on the 'Go back to plan view' button to edit your garden.

**Saving your garden**

Click on 'Save my garden' at the top of this window. You can come back to it at any time by clicking on 'Open previous garden'.

**Plant information**

View plant information by walking up to a plant and clicking on it until the plant's description appears in this panel.





# The conclusion.

In present time this theme is very actual, because, many people buying a summer residence do not want to work on it her, and simple want to have a rest and enjoy beauty and fresh air.