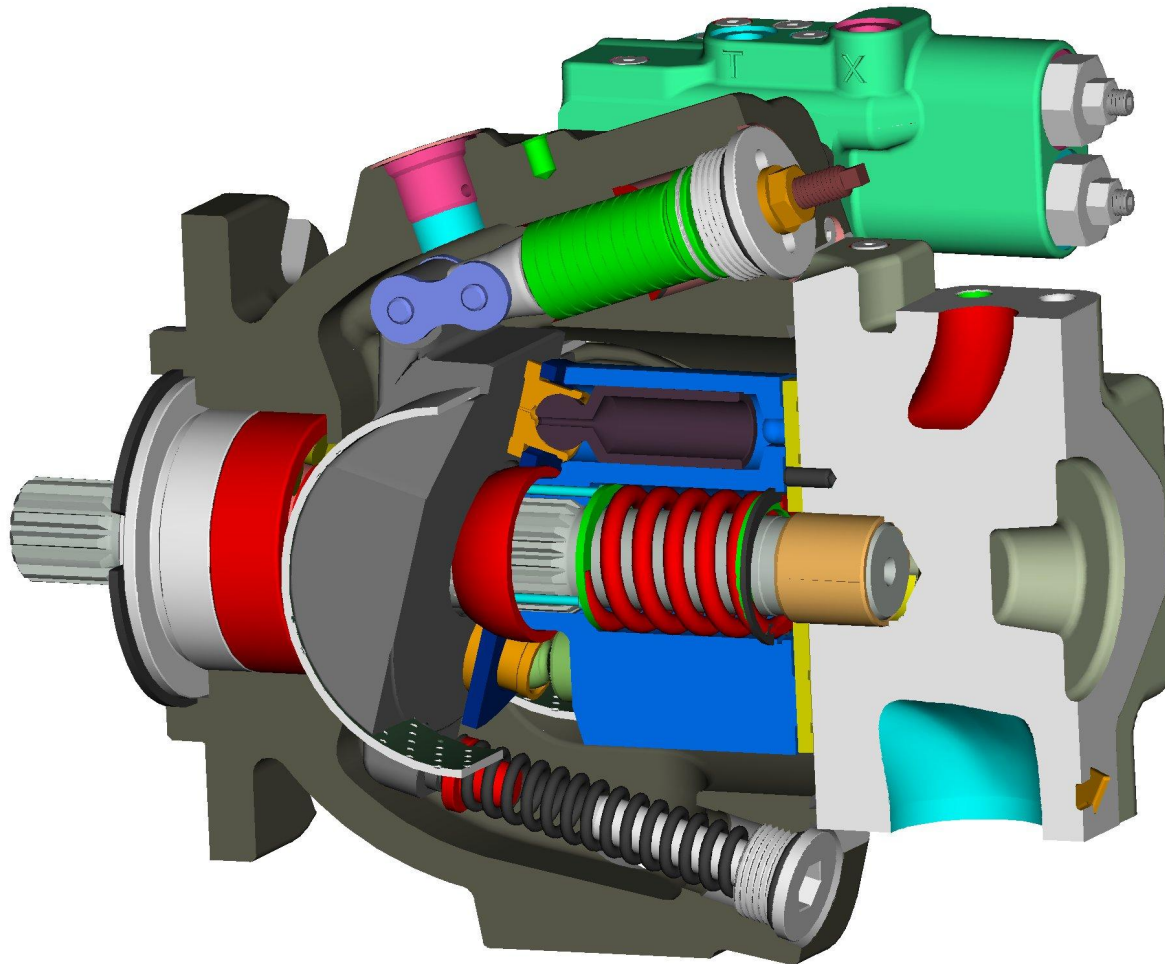

P2 and P3
Our
Variable Pump Line
for Mobile Applications

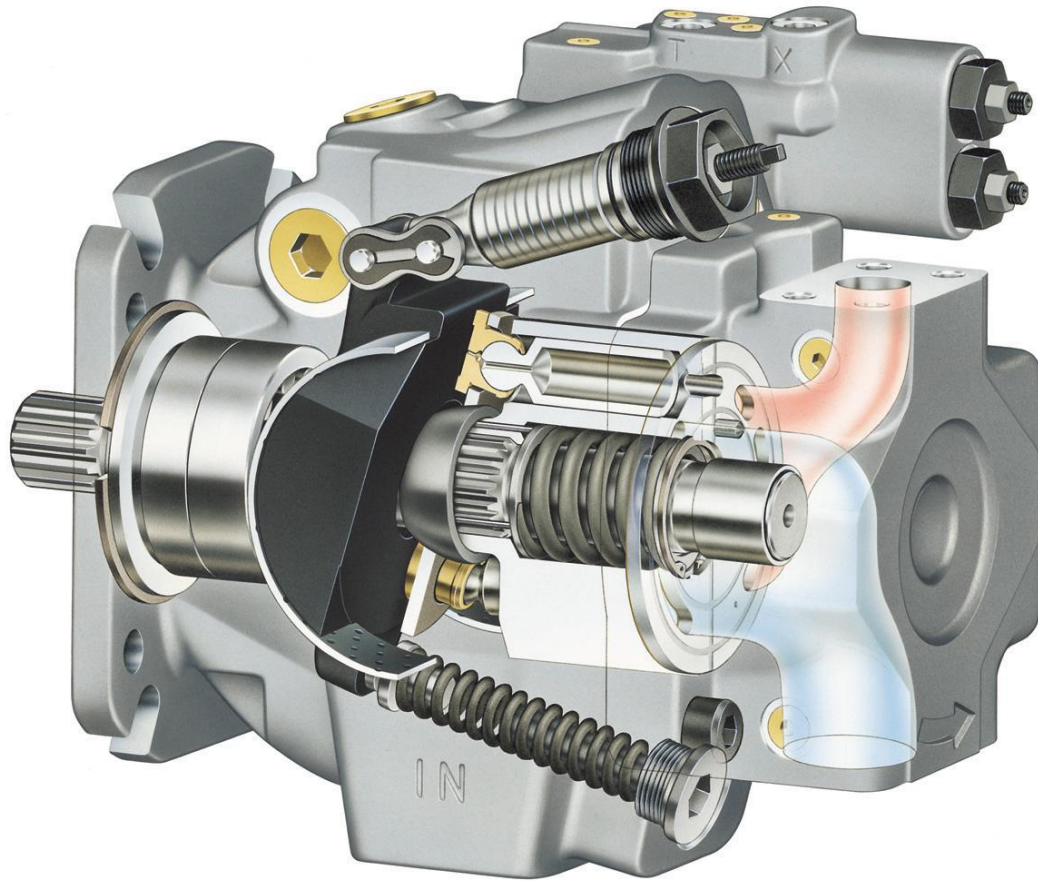


P2

P2 Standard pump



P2

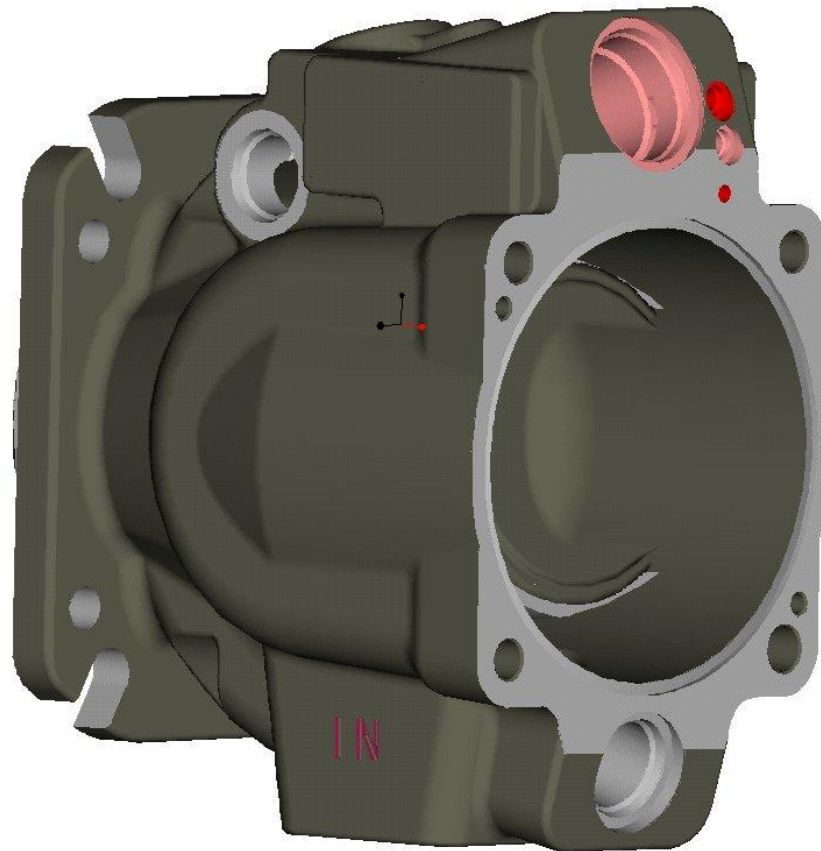


P2 Pump Family

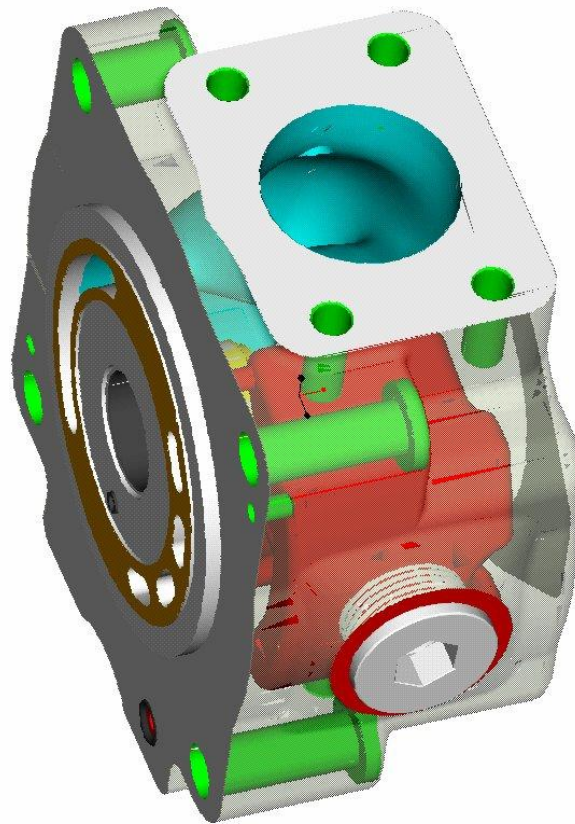


| | 60 | 75 | 105 | 145 | |
|---|----------|----------------------|-----------|-----------|---------|
| • <u>Displacement cc/rev</u> | | | | | |
| • <u>Pressure (bar) (cont./ peak)</u> | | All sizes 320 / 370 | | | |
| • <u>Self priming speed (rpm)</u> | 2800 | 2500 | 2300 | 2200 | |
| • <u>Noise Level (dB(A))</u> at 1800 rpm and 250 bar | | < 74 | < 76 | < 78 | < 80 |
| • <u>Controls</u> | | | | | |
| Load sensing w. pressure cut off | Yes | Yes | Yes | Yes | |
| Pressure/ flow / torque | Yes | Yes | Yes | Yes | |
| Pressure/ flow / torque / summation | | Yes | Yes | Yes | Yes |
| Electronic flow control | | Planned | | | |
| • <u>β10 lifetime @ max. flow and pressure</u> | | 5000 h @ max ratings | | | |
| • <u>Flange</u> | Standard | SAE C-4 | SAE C-2/4 | SAE C-2/4 | SAE D-4 |
| Optional | SAE B-2 | | | SAE C-2 | |
| • <u>Shafts (all SAE spline)</u> | Standard | C | C | C | D |
| Optional | B-B | C-C | D | C | |
| Optional | B | | | | |
| • <u>Through shaft</u> at full torque | | Yes | Yes | Yes | Yes |
| • <u>Rear ports</u> | Yes | Yes | | | |

Noise - Air borne



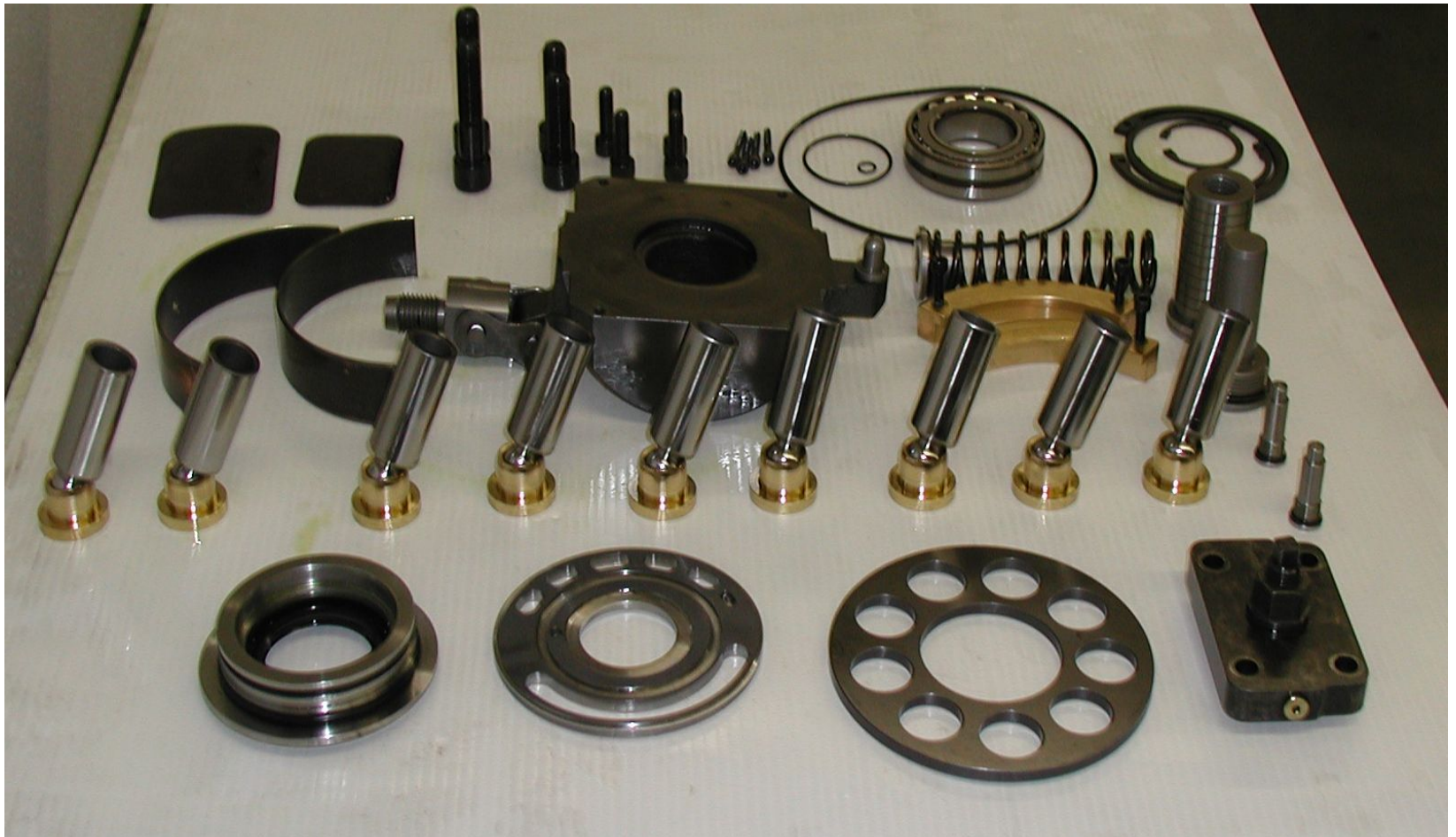
Noise - Hydraulic



Parts produced in house

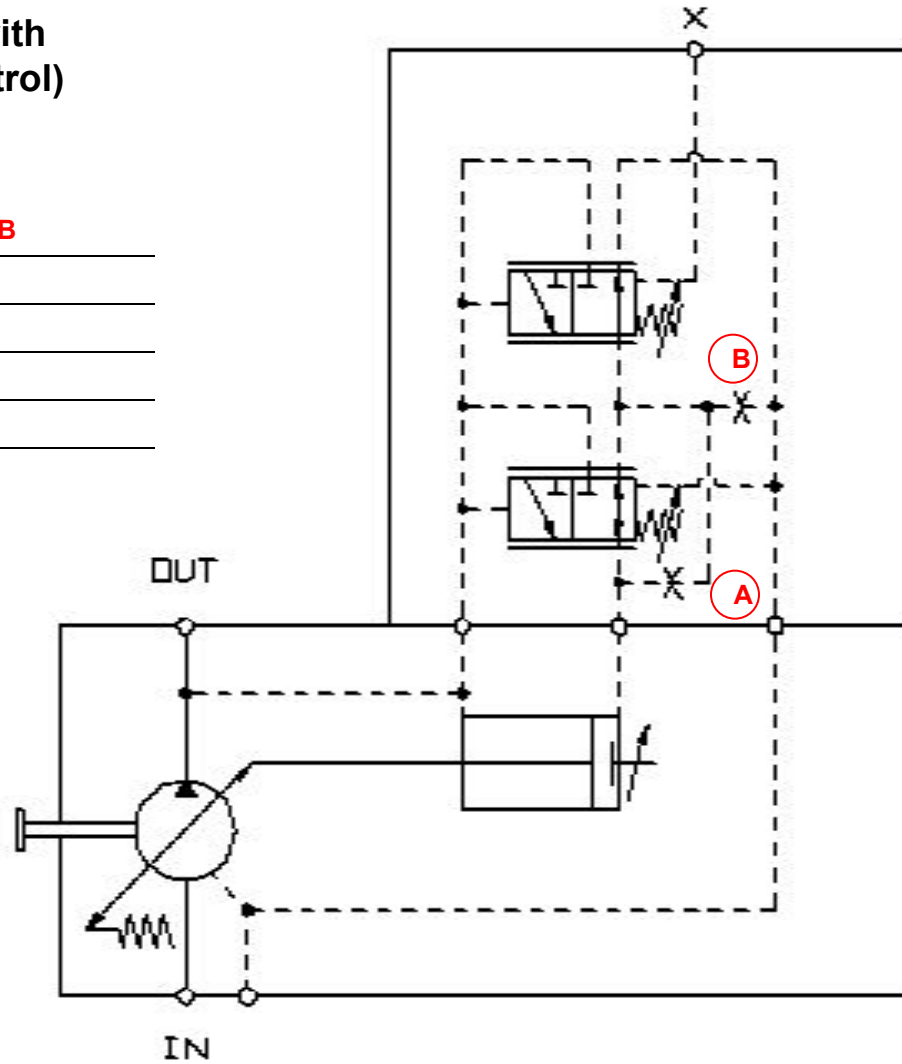


Parts from sub contractors



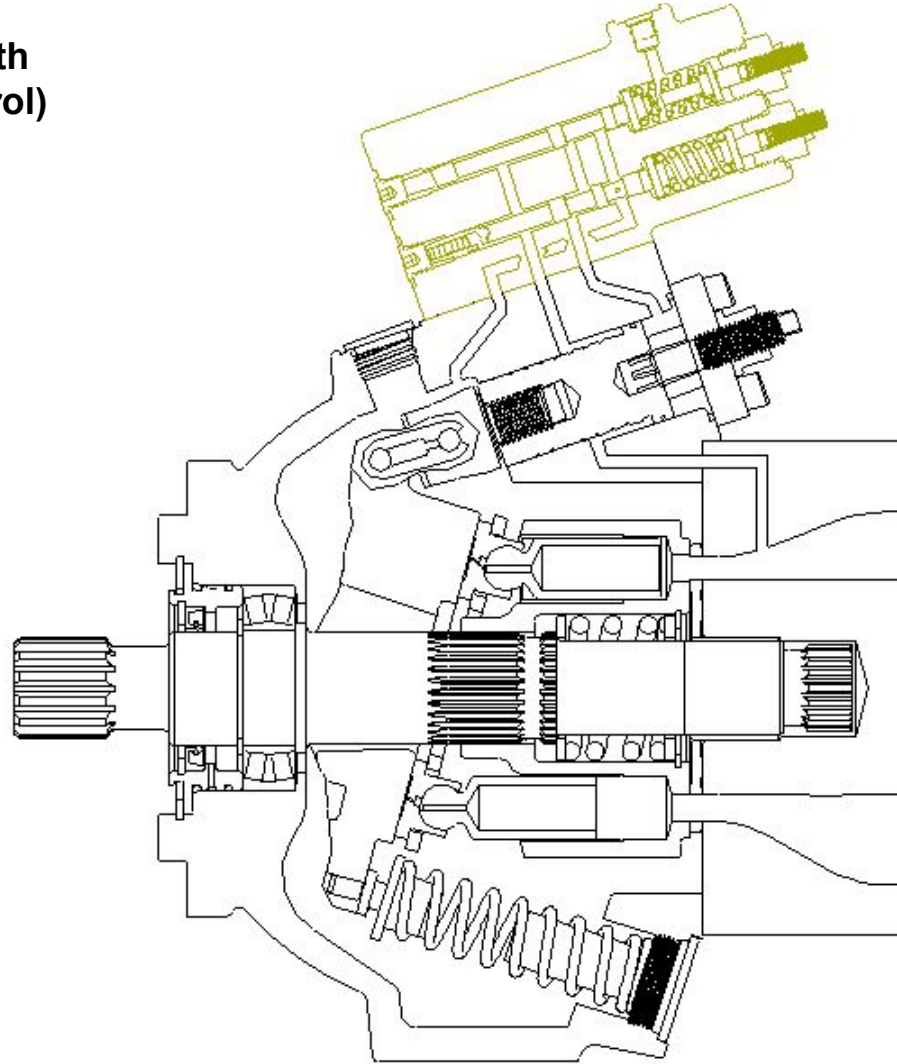
P2 - LA (Load Sensing with Maximum Pressure Control)

| Displacement | Orifice diameter (mm) | |
|--------------|-----------------------|-----|
| | A | B |
| 60 cc | 0,8 | 0,8 |
| 75 cc | 0,8 | 0,8 |
| 105 cc | 0,8 | 0,8 |
| 145 cc | 0,8 | 0,8 |

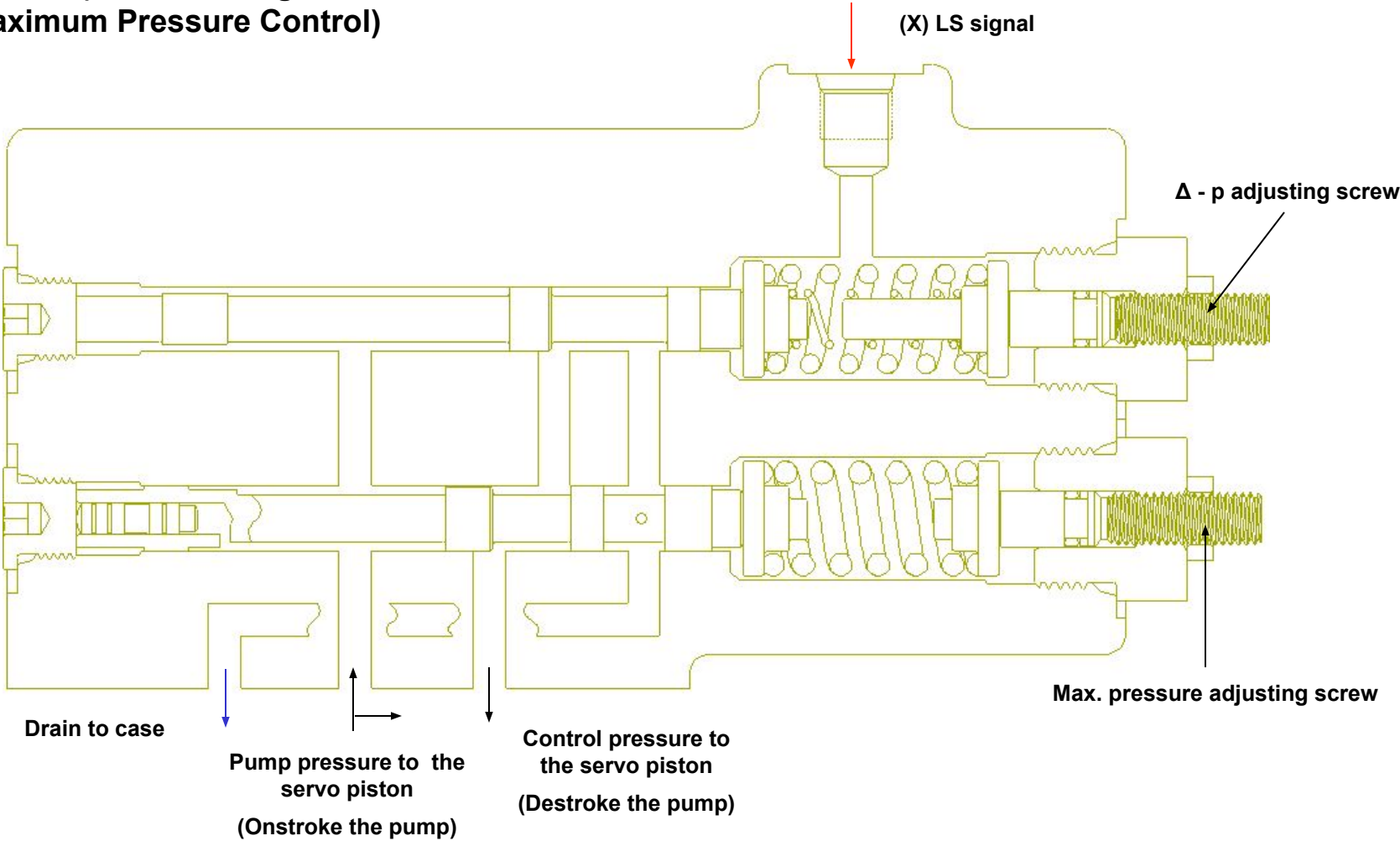


P2/P3 Presentation/ Controls

**P2 - LA (Load Sensing with
Maximum Pressure Control)**

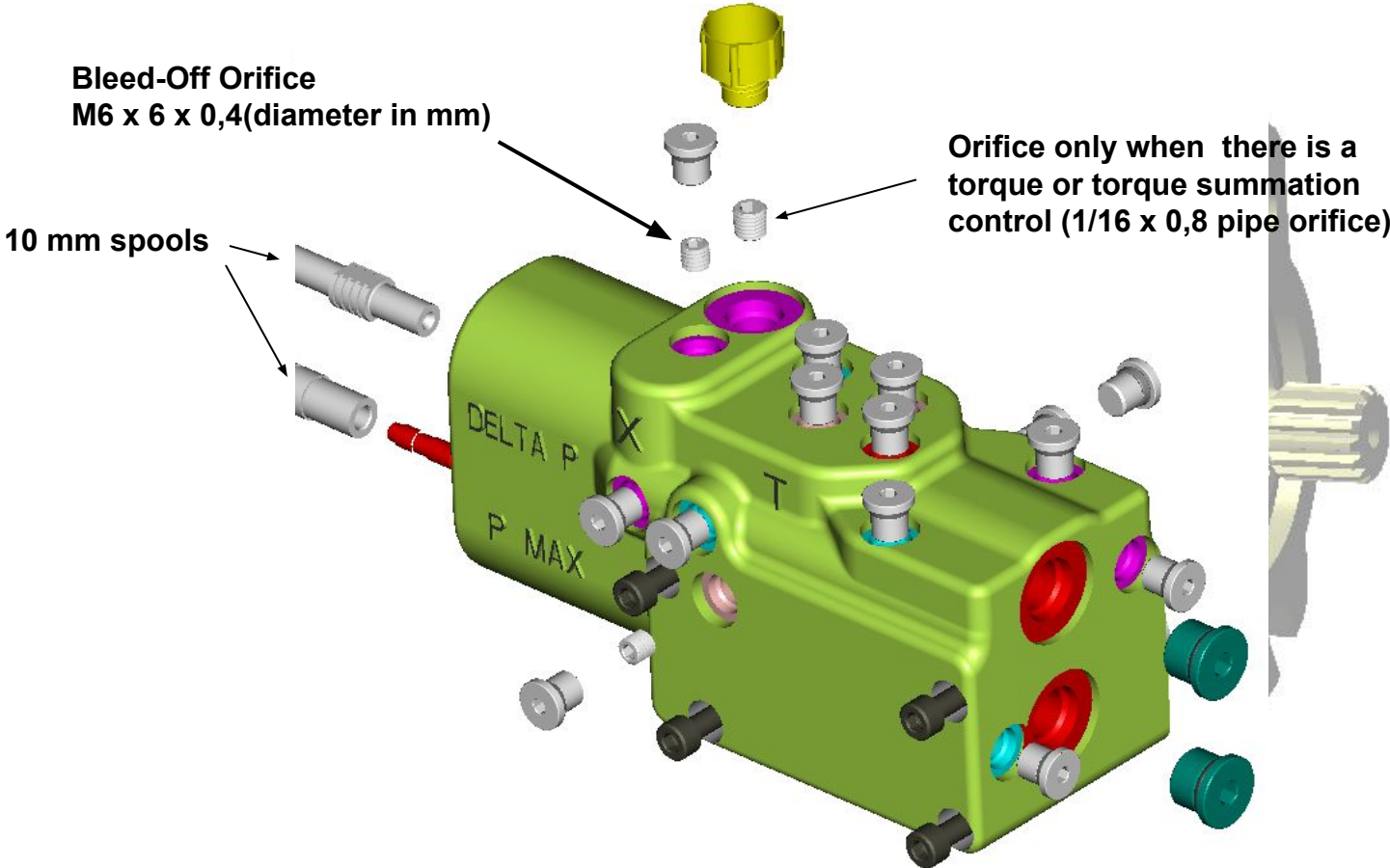


P2 - LA (Load Sensing with Maximum Pressure Control)



Location of orifices

P2/P3 - 075, -105, - 145



P2 TA, TC controls

P2 TA (20%-60%)

P2 TC (50%-90%)

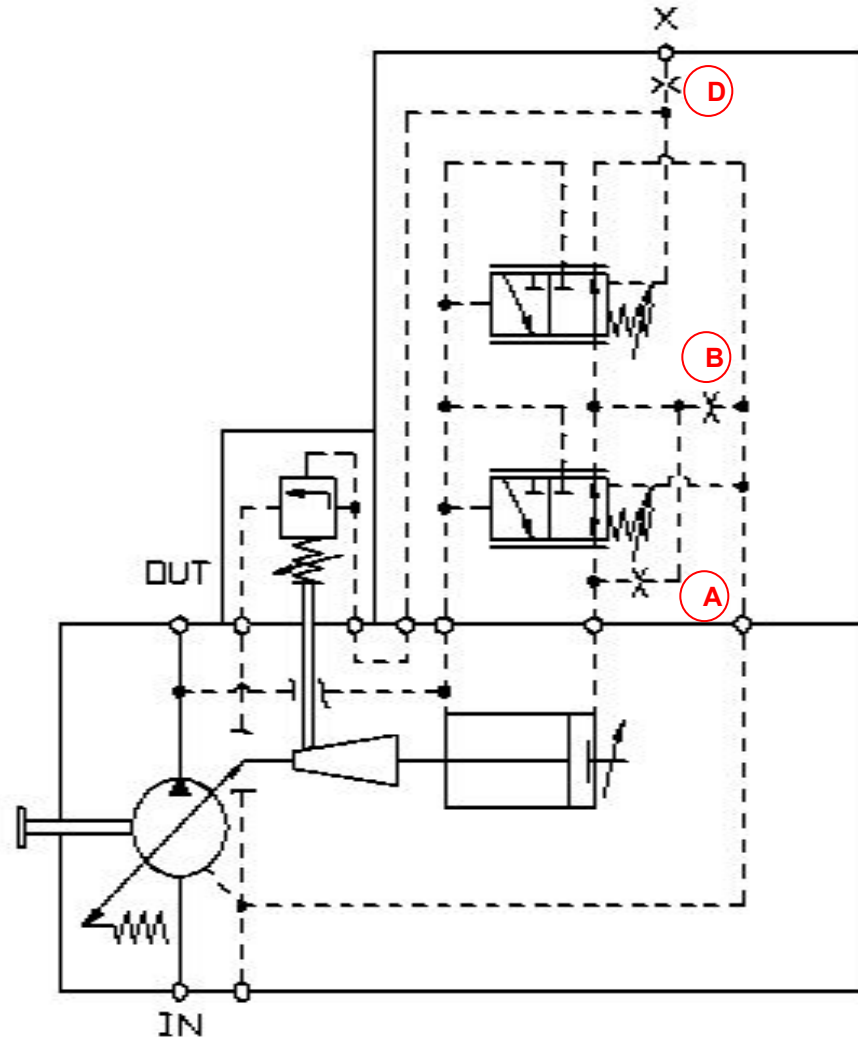
Torque

Load Sensing and

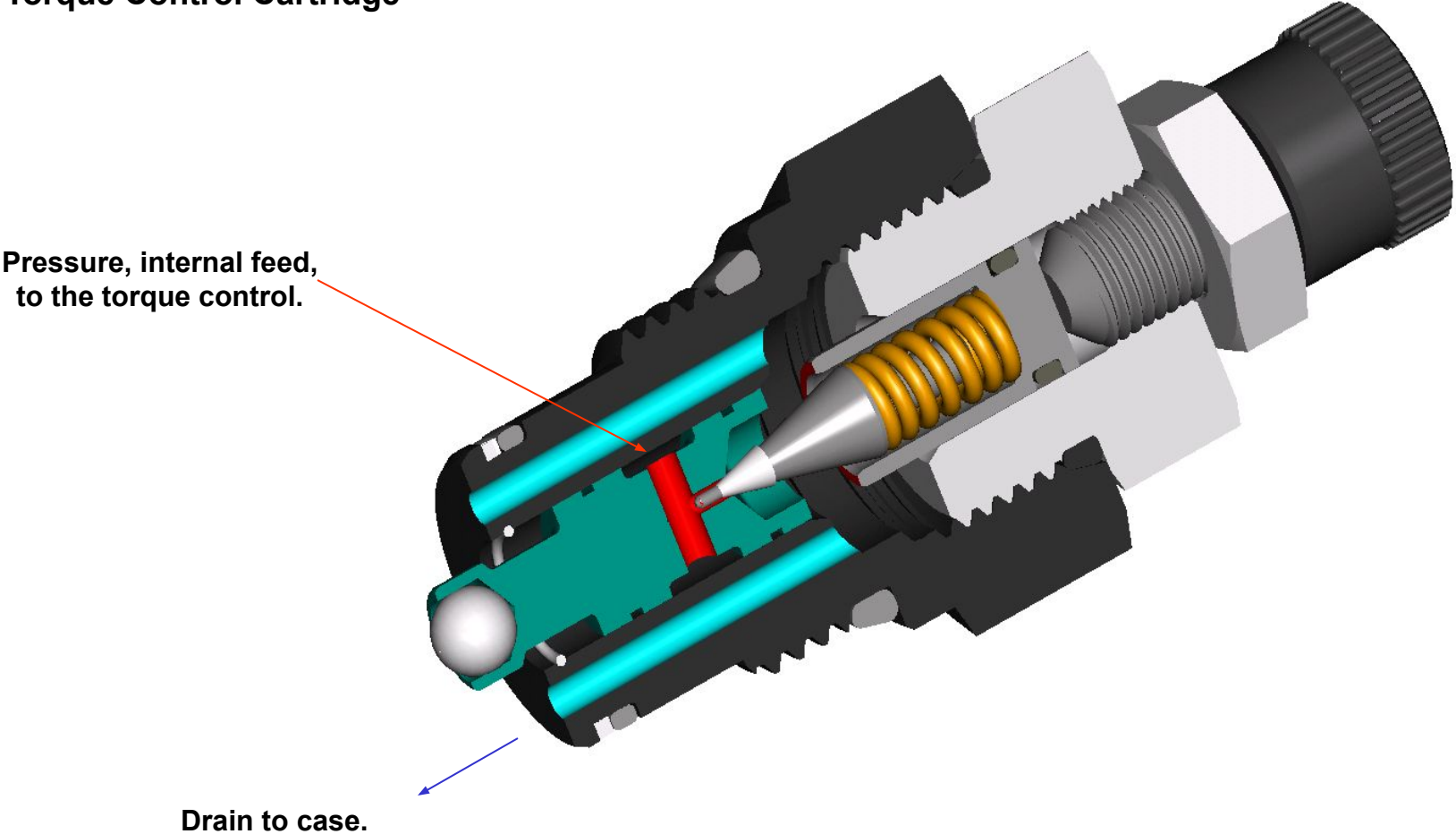
Maximum Pressure Control

Orifice diameter (mm)

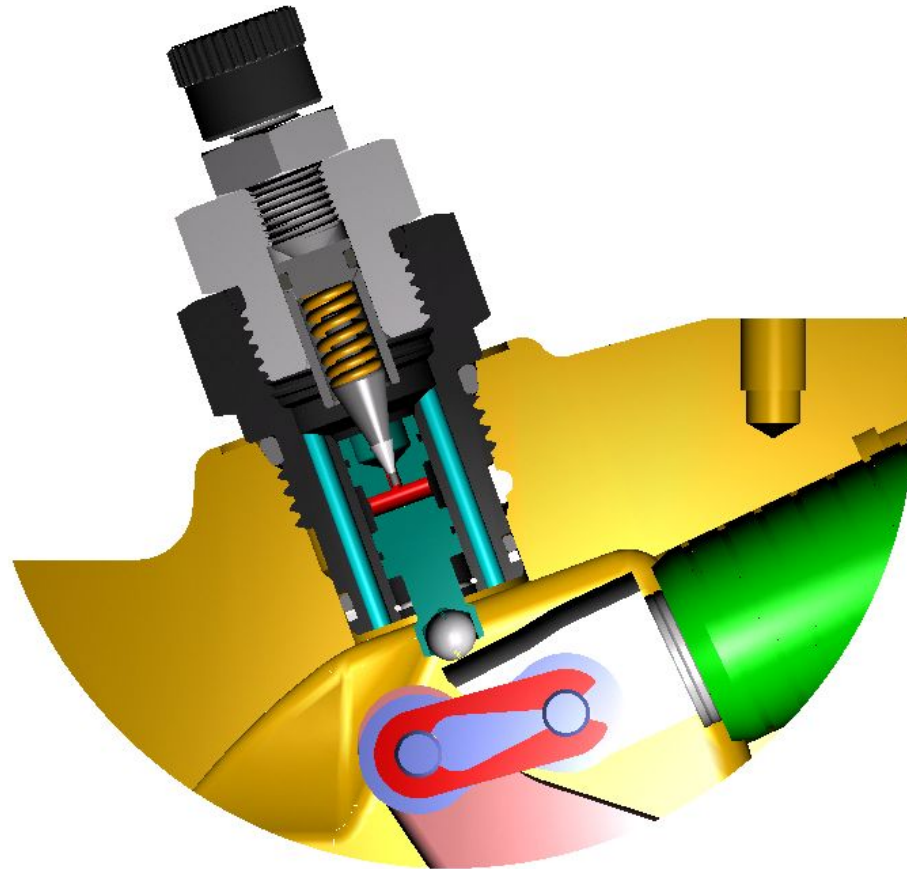
| Displacement | A | B | D |
|--------------|-----|-----|-----|
| 60 cc | 0,8 | 0,8 | 0,8 |
| 75 cc | 0,8 | 0,8 | 0,8 |
| 105 cc | 0,8 | 0,8 | 0,8 |
| 145 cc | 0,8 | 0,8 | 0,8 |



Torque Control Cartridge



Torque Control Cartridge



P2/P3 - Flexibility

| | | | | | |
|----|---|----|-----------------|---|-------------------|
| LA | A | 65 | P2-075-0806-01N | I | COMPENSATOR ASS'Y |
|----|---|----|-----------------|---|-------------------|

| | | | | | |
|----|---|----|-----------------|---|------------------|
| TC | A | 65 | P2-075-0806-11N | I | COMPENSATOR ASSY |
|----|---|----|-----------------|---|------------------|

