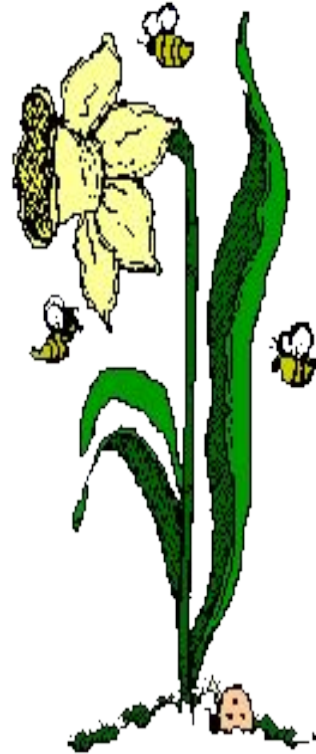


Parts of a Plant

Grade 3



The student will learn:

- To identify the basic parts of a plant

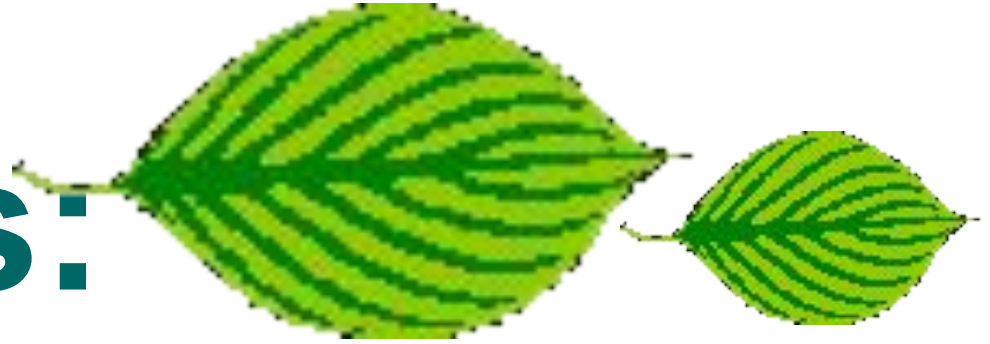


The Stem:

- holds up the plant parts above the ground.
- has tiny tubes to transport water and nutrients to the plant's parts.



Leaves:



- Make food for plants which is sugar
- Take in carbon dioxide through tiny openings in the leaves

Roots:

- Hold the plant in the ground
- Take in water and nutrients for the plant's growth



Petals:

- Are the colored part of the plant



Let's see what you learned:

- Which part of the plant holds it in the ground?

Let's see what you learned:

- Which part of the plant holds it in the ground?
- **Roots**

Let's see what you learned:

- Which part of the plant makes food for the plant?

Let's see what you learned:

- Which part of the plant makes food for the plant?
- leaves

Let's see what you learned:

- Which part of the plant holds it above the ground?

Let's see what you learned:

- Which part of the plant holds it above the ground?
- **stem**

Let's see what you learned:

- Which part of the plant is usually colored?

Let's see what you learned:

- Which part of the plant is usually colored?
- petal

For more practice go to:



- <http://www.hcs.ohio-state.edu/hcs300/glossary/glossary.htm>
- <http://classroom.jc-schools.net/sci-units/plants-animals.htm>
- <http://www.urbanext.uiuc.edu/gpe/case1/facts.html>
- <http://www.firstschoolyears.com/science/worksheets/plants/plants.html> (go to label the plant)
- <http://www.naturegrid.org.uk/plant/parts.html>
- <http://www.hhmi.org/coolscience/vegquiz/plantparts.html>

Resources:



- <http://www.hcs.ohio-state.edu/hcs300/glossary/glossary.htm>
- <http://classroom.jc-schools.net/sci-units/plants-animals.htm>
- <http://www.urbanext.uiuc.edu/gpe/case1/facts.html>
- <http://www.firstschoolyears.com/science/worksheets/plants/plants.html> (go to label the plant)
- <http://www.naturegrid.org.uk/plant/parts.html>
- <http://www.hhmi.org/coolscience/vegquiz/plantparts.html>