



The United States of America



**Among big rivers are the
Colorado and the
Missouri.**



MONTANA FWP



- Mississippi is the largest river in North America. It is called the main artery of the continent. Its importance in the economic life of the country is large and significant. Firstly it is a navigable river entering the Gulf of Mexico. There are a lot of **power stations** on the river. Its water is also used for irrigation.

Yosemite Valley



The Grand Canyon is one of the American's main tourist attractions. It is different at different times of the day, and in different seasons and weather.





How do you understand the phrase
“The UA is a big melting pot?”



The people of the United States are a mixture of different nationalities.



Branches of the American government



**The President and
his helpers**



Congress

**The Senate (100 members),
and The House of
Representatives (435
members)**

**Separation
of
power**

The Supreme Court



The US Congress

What does the word
“congress” mean?

What does the Congress do?

Where does it meet?

What are its two parts?

What do you remember about
the Senate and senators?

What do you remember about
the House of Representatives
and congressmen?



Are there any scyscrapers in Washington,D.C.?

- Washington is the residence of the President and the Congress of the USA. The White House is the President's residence, the Capitol — the seat of the American Congress. The largest and the tallest among the buildings is the Capitol with its great House of Representatives and Senate Chamber. There are no skyscrapers because no other building must be taller than the Capitol

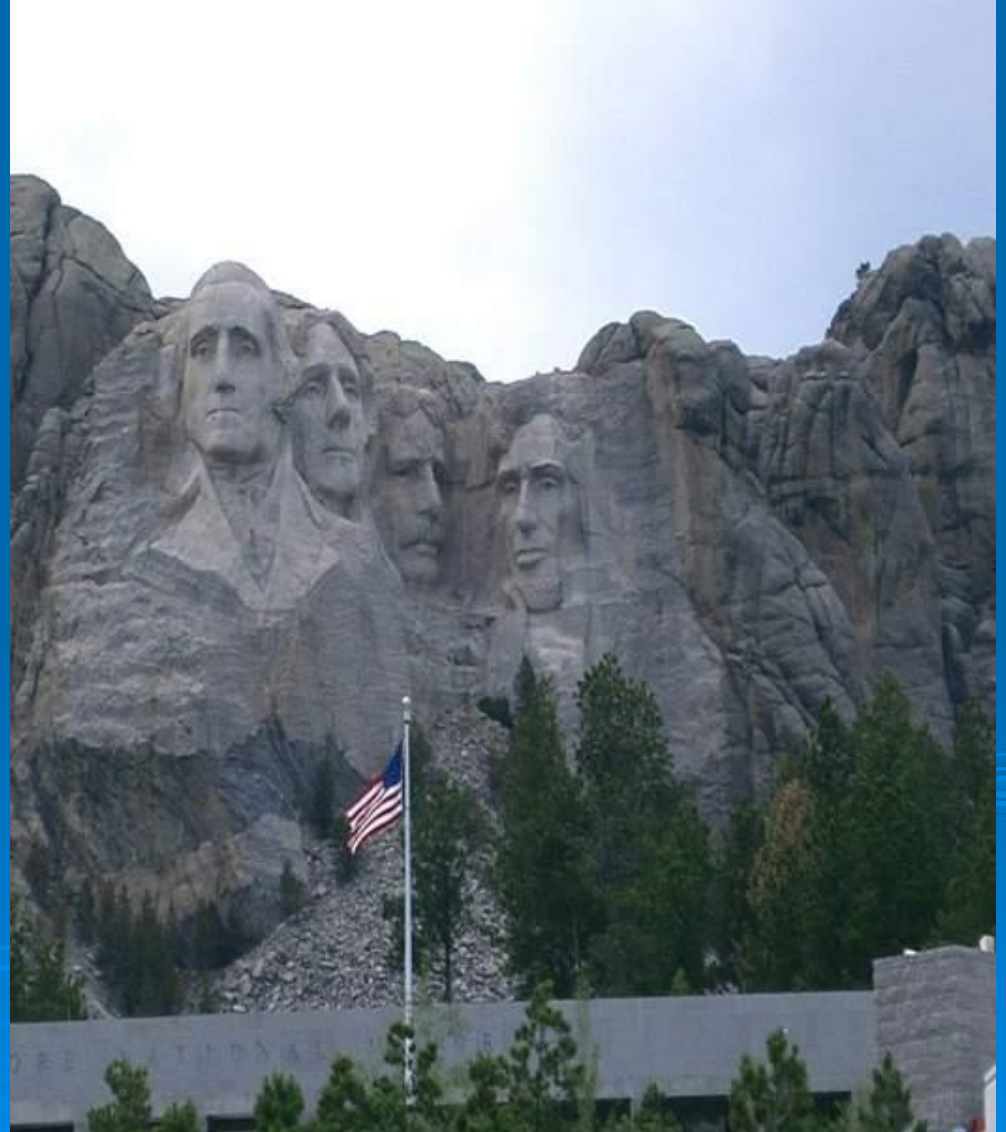
The White House is the President's residence, the Capitol — the seat of the American Congress.



- The **United States Congress** consists of two houses: the House of Representatives consists of two houses: the House of Representatives and the Senate consists of two houses: the House of Representatives and the Senate. The Congress meets in the Capitol consists of two houses: the House of Representatives and the Senate. The Congress meets in the Capitol in Washington, D.C. consists of two houses: the House of Representatives and the Senate. The Congress meets in

The US President and his helpers

- What does the President do?
- Who helps the President?
- Who can become the President?
- How long can one be the President?
- When do people vote for their President?



The Supreme Court

- What does the Supreme court do?
- How many judges are there in the Court?
- How long do the judges work in the Court?



Equal justice under law



The US Constitution

The US Constitution can be changed , can't it?

What do you call changes to American Constitution?

How many amendments to the Constitution can you name?



Choose the right version

1. The war of Independence began in ...

a) 1775

b) 1785

c) 1875

2. The war of Independence ended in

a) 1780

b) 1783

c) 1873

3. The Constitution was written in

a) New York

b) Washington

c) Philadelphia

4. The Civil war lasted for years.

a) three

b) four

c) five

5. All together there are amendments to the Constitution.

a) twenty

b) twenty-six

c) thirty-six

6. The US President's term is

a) 2 years

b) 4 years

c) 6 years

How long is the Senator's **term**?

How long is the congressman' term?

What is the US president responsible for?

What is the function of **the Cabinet of Ministers**?

Who is **Commander in Chief** of the countries armed forces?

The bottom right corner of the slide features several decorative concentric circles in a lighter shade of blue, resembling ripples in water.

George Washington

Was the **first** American president

Was born in a **planter's** family

Two private teachers **taught him to be a soldier and a**

gentleman
When a young man he learned to **ride horse, to hunt, shoot, sail and**

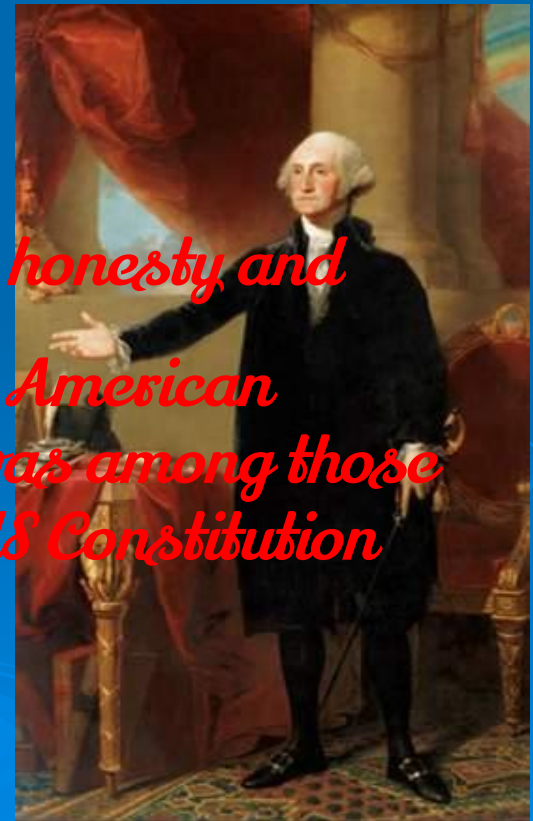
swim
Took part in the **Revolutionary War**

He was a professional **soldier**

People had a lot of respect to him for **courage, honesty and**
wisdom

People remember him
because

**he was the first American
president and was among those
who wrote the US Constitution**



Abraham Lincoln

Was the **16th** American president

Was born in a **poor** family

He had no teachers

When a young man he learned to **do well everything he did**

Took part in the **Civil** War

He was a professional **lawyer**

People had a lot of respect to him for his **honesty and courage**

People remember him
because

**he led the people through the Civil
War and made all the slaves free**



Make up questions and answer them

1. At the beginning of the 19th century women in America didn't have equal rights with men, **did they** ?
2. **Were they allowed** to speak in public or vote or study at most colleges?
3. Who decided **to meet with other women to try to change laws** ?
4. When **did women from all over the country meet** to discuss women's right?
5. What **happened** after their meeting?
6. What rights **did the women fight for** ?
7. Women in America received their rights soon after they began fighting for them, **didn't they** ?
8. What **did many women** understand?

How do you understand the phrase
“The UA is a big melting pot?”

The people of the United States are a
mixture of different nationalities.



What US state is the state of tobacco and Tarheelers?

□ Tarheelers
[ˈtɑːˌhi:l(ə)z]-(дегтярники)



□ most heavily agricultural counties are massed (сосредоточены) in the coastal plain along with a bank of northern piedmont [ˌpiːdˈmɛnt] counties (предгорными округами) on the Virginia border.

The Answer:

- **North Carolina** [ˌnɔːθkær(ə)'laɪnə] is the center of tobacco, corn, and soybean production.
- Virtually all peanut production is in the eastern part of **the state**, while tobacco, corn and soybean production spills over into the piedmont. .

What kind of sculpture is it ?
Where is it situated?



The Mount Rushmore National Memorial

- is a sculpture carved into the granite face of Mount Rushmore near Keystone, South Dakota, in the United States.
- features 60-foot (18 m) sculptures of the heads of four United States presidents features 60-foot (18 m) sculptures of the heads of four United States presidents: George Washington features 60-foot (18 m) sculptures of the heads of four United States presidents: George Washington (1732–1799), Thomas Jefferson features 60-foot (18 m) sculptures of the heads of four United States presidents: George Washington

Why were these presidents chosen?

- George Washington was chosen because he brought the nation to democracy, Thomas Jefferson because he created the Declaration of Independence, Abraham Lincoln because he put an end to slavery in the USA, and Theodore Roosevelt because he contributed to the building of the Panama canal, as well as the protection of the state and business.

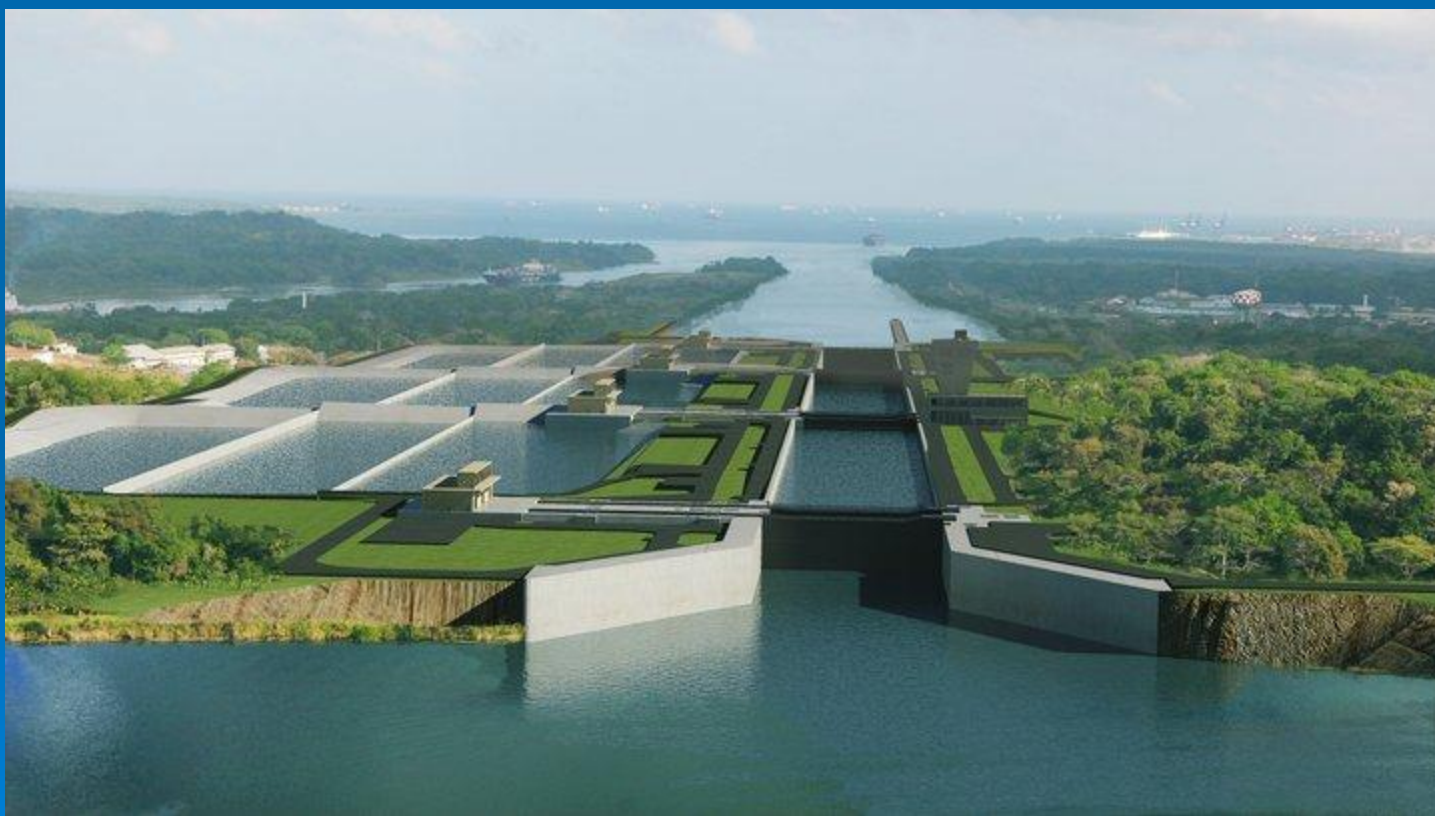
The Panama Canal is a 77-kilometre ship canal in Panama that connects the Atlantic Ocean (via the Caribbean Sea) to the Pacific Ocean.



Panama Canal

[,pænə'mɑ:kə,næl]







What kind of park is it ?



What is the name of the region where Disneyland is situated?



- In Orlando in the state of Florida in the eastern parts of the United States



and in Southern California in the city of
Anaheim



THE ANSWER:

- ❑ Disneyland is in Southern California in the city of Anaheim in.
- ❑ In 1971 Walt Disney decided to build another Disney park in Orlando in the state of Florida in the eastern parts of the United States where 75 percent of the country's population live.



- What are the most famous places to enjoy the beauty and power of wild America? 7)
What mighty rivers of the USA do you know?

The Grand Canyon is one of the American's main tourist attractions. It is different at different times of the day, and in different seasons and weather



The Colorado river formed the Grand Canyon over the million years. Slowly the river cut down through hard rock.





The canyon is one mile deep and two hundred miles long .





- **Yosemite Valley** is a glacial **valley** in **Yosemite** National Park in the western Sierra Nevada mountains of California. The **valley** is about 8 miles (13 km) long and up to a mile deep...

The **Sierra Nevada** /si'ɛrə ni'vɑ:də/ is a **mountain** range in the western United States, between the Central Valley of California and the Basin and Range.

Province .



Basin and Range Province

- The region covers much of the western United States The region covers much of the western United States, extends into northwestern Mexico The region covers much of the western United States, extends into northwestern Mexico

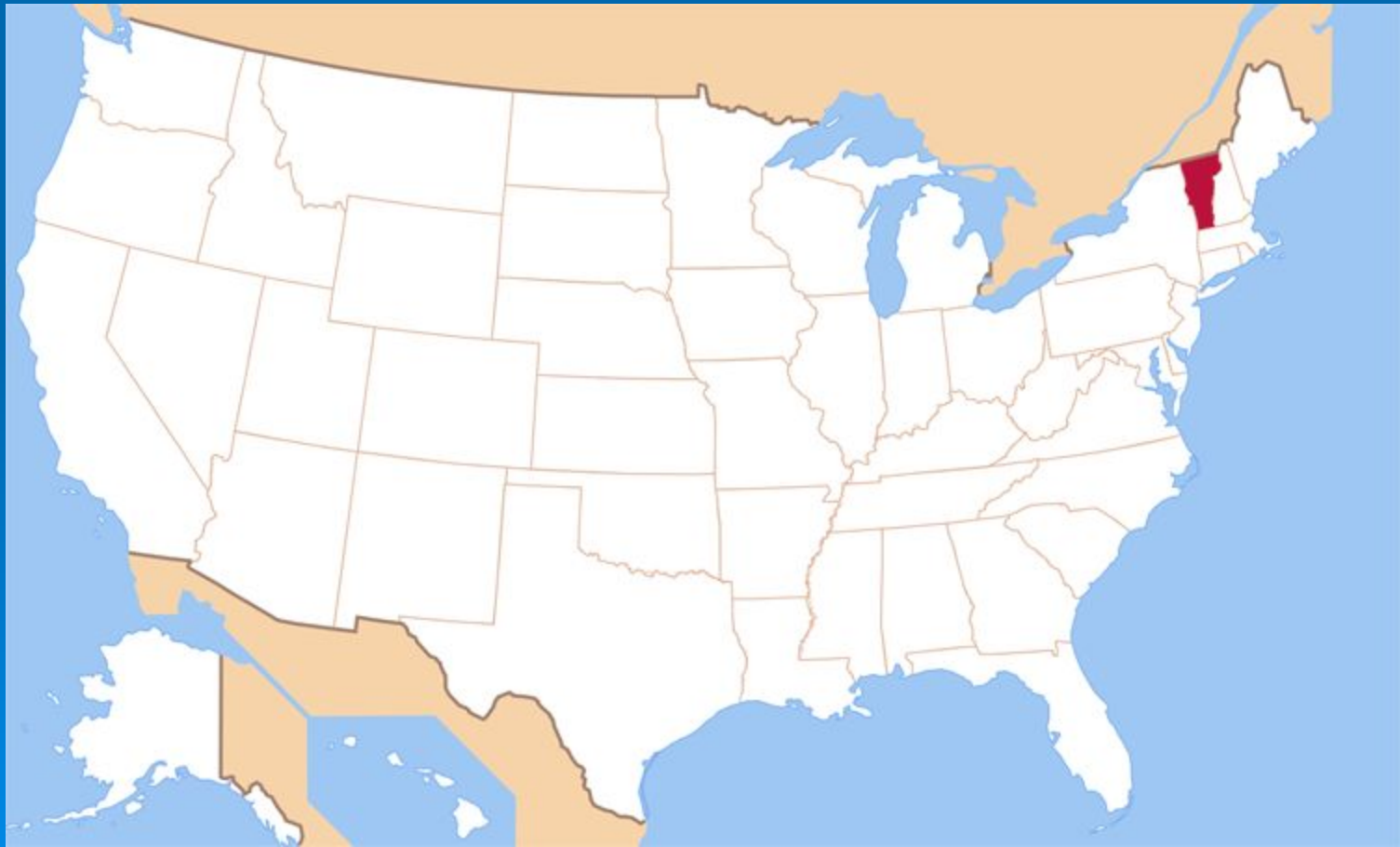


The south side of the Canyon is dry and desert country and the north side has tall forests.

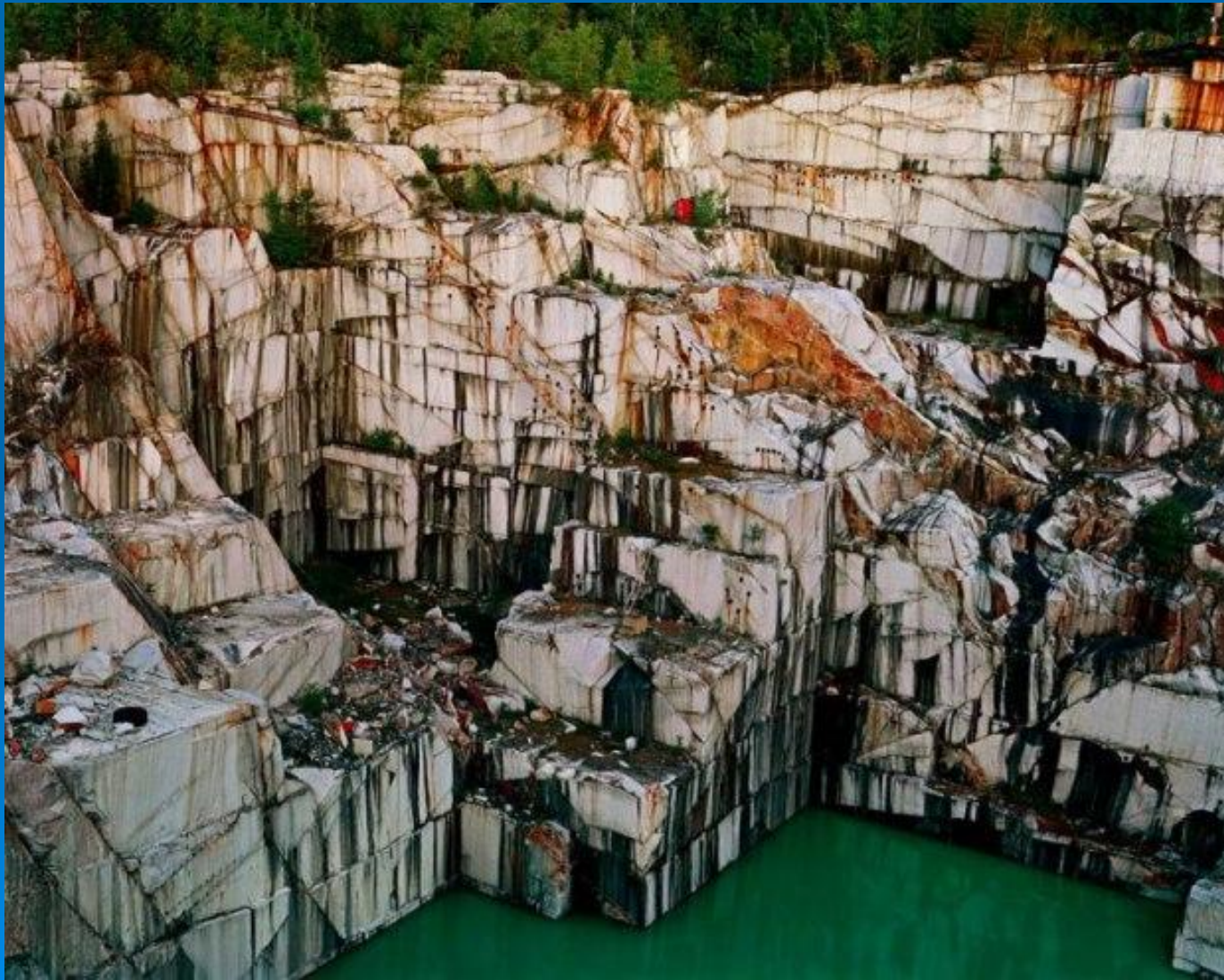


What Us State is known as the granite state?

□ Vermont



Vermont is also famous for its marble deposits [dɪ'pɒzɪt]
. White marble from Vermont has been used all over the world in
monuments and sculptures.



- Vermont is the granite['græni:t] capital of the world. The title is well deserved since its granite is known throughout the world.



- The "main" mineral wealth of Vermont is marble and granite. Near the town of Rutland are deposits [dɪ'pɒzɪts] of high quality marble and Barre is the centre of the production of granite.

Granite quarry in Barre, Vermont



□ quarry
['kwɔɹɪ]-
камено-
ломня

Vermont is the granite['grænit]
capital of the world. The title is well deserved since
its granite is known throughout the world.



THE ANSWER:

- Vermont is the self described granite['grænit] capital of the world. The title is well deserved since its granite is known throughout the world. The huge granite deposits were discovered at Millstone Hill after the War of 1812.

Vermont is also famous for its marble deposits. White marble from Vermont has been used all over the world in monuments and sculptures. Vermont's grey and green marbles are also prized.

What building is the symbol of the US military?



- **The Pentagon** is known as a symbol of the U.S.military .It is the headquarters of the United States Department of Defense of the United States Department of Defense, located in Arlington County of the United States Department of Defense, located in Arlington County, Virginia. It has five sides, five floors above ground, two basement levels, and five ring corridors per floor .

defence [dɪ'fens] – оборона, защита

military – вооруженные силы

headquarters [ˌhed'kwɔ:təz] – штаб-квартира

Pentagon ['pentəg(ə)n] – пятиугольник, concentric[kən'sentrɪk]
концентрический

- There are 5 concentric pentagons or «rings» on each floor and 10 connecting corridors that are developed in such a way that at any remote place of the building you can reach in only 7 minutes.



What famous American Bridges do you know?

- The Brooklyn bridge connects Brooklyn and Manhattan, and extends over the East River.



The Lake Pontchartrain Causeway

causeway ['kə:zweɪ] - дамба, насыпь



- Sometimes only the Causeway, is composed of two parallel ['pærəleɪ] **bridges** crossing Lake Pontchartrain in southern **Louisiana**,. The longest of the two **bridges** is 38,35 km.



The Golden Gate bridge connects Marin County with the San Francisco peninsula. The name of the bridge has nothing to do with the actual appearance of the bridge, and it is not golden but international orange in color.



□ peninsula
[pə'nɪn(t)sjələ]-
полуостров





The bridge is a two-level suspension **bridge** (висячий мост)
which crosses over the Hudson river and connects Fort Lee, New Jersey and upper Manhattan, New York.



Mackinac bridge is the third in the list of world's biggest suspension bridge, with 26,371 feet long.

suspension [sə'spen(t)](ə)n] bridge -подвесной мост



What parts of the peninsula does it join?

- It joins Michigan's upper and lower peninsulas, and crosses over the straightaways [ˌstreɪtə'weɪ] курс по прямой) of Mackinac.



nationalatlas.govTM

Where We Are

POPULATED PLACES

- 1,000,000 and over • New York
- 100,000 – 499,999 • Syracuse
- 25,000 – 99,999 • Binghamton
- 24,999 and less • Saratoga Lake
- State capital ★ Albany
- Urban areas

TRANSPORTATION

- Interstate/limited access highway
- Other principal highway
- Railroad
- Ferry

PHYSICAL FEATURES

- Streams
- Lakes
- Highest elevation in state (feet) +5544
- Other elevations (feet) +4180
- The lowest elevation in New York is sea level (Atlantic Ocean).

0 20 40 Miles
Albers equal area projection



U.S. Department of the Interior
U.S. Geological Survey



The National Atlas of the United States of America®

Map data: 2010 U.S. Census Bureau, U.S. Geological Survey, NOAA, and other sources.

What is the nickname of New York ?

- The big apple.



Which states touch New York?



The answer:

- New York is bordered by New Jersey and Pennsylvania to the south and by Connecticut, Massachusetts, and Vermont to the east. The state has a maritime border with Rhode Island. New York is bordered by New Jersey and Pennsylvania to the south and by Connecticut, Massachusetts, and Vermont to the east. The state has a maritime border with Rhode Island, as well as an

What monument is it? What does it symbolize?



- Statue of Liberty National Monument is a United States national monument Statue of Liberty National Monument is a United States national monument located in the states of New Jersey Statue of Liberty National Monument is a United States national monument located in the states of New Jersey and New York Statue of Liberty National Monument is a United States national monument located in the states of New Jersey and New York and

- The largest number of Baptists in the United States of America accounts for about 30 million believers. This is a confession, released from the environment of the English puritans. In the basis of the Baptist faith lies the principle of voluntary and consciousness with strong Christian beliefs and refusal from a sinful lifestyle.

What city in the united states has
the most people?



What is the largest art museum in the United States located in New York?

□ Metropolitan Museum of Art



classical antiquity and Ancient Egypt, paintings and sculptures from nearly all the European Its permanent collection contains more than two million works of art from classical antiquity and Ancient Egypt, paintings and sculptures from nearly all the European masters, and an extensive collection of American Its permanent collection contains



What city do the most Russians live ?

- In New York ,in Brighton Beach. Even shop signs are in Russian there.



Hollywood Boulevard ['bu:ləvə:d]



- The Los Angeles area, located to the northwest from the city centre in the state of California. Traditionally Hollywood is associated with the American film industry, because in this area there are a lot of movie studios, and it is a home to many famous actors.



What are the most popular sports in the USA?

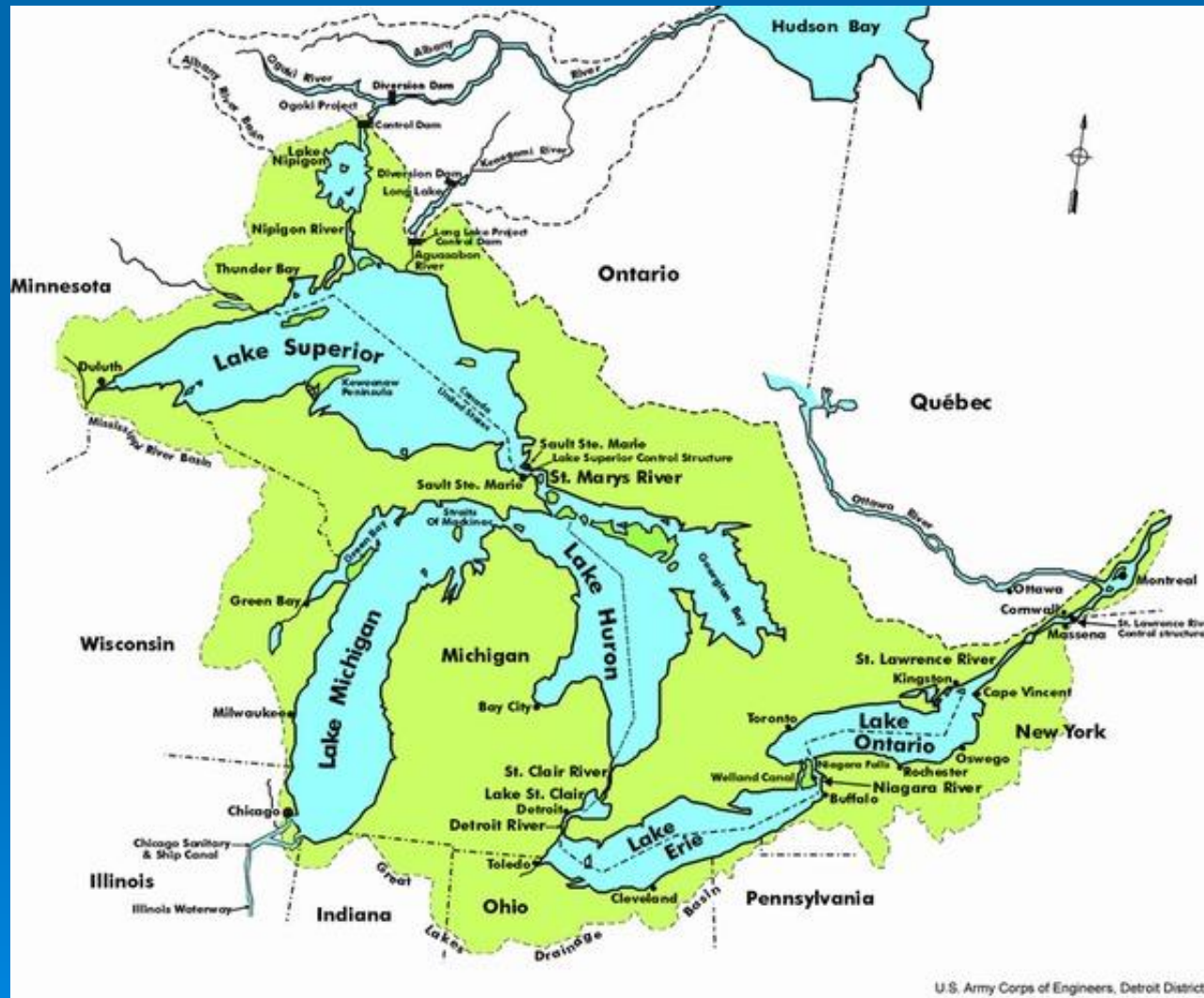
- Baseball and American Football are closely followed by Basketball in terms of sports popularity in the United States. The NBA (National Basketball Association) competitions, like the MLB and NFL, are followed not only in the United States but throughout the world.

- Ice Hockey: Ice hockey is the next in the list of most popular sports in USA. Ice hockey originated in the neighbouring country - Canada and soon gained popularity in North America. National Hockey League (NHL), the oldest international Ice Hockey competition, was founded in Northern America. In 1960, America obtained its first Gold Medal in Winter Olympics. With the introduction of artificial ice rinks, Ice-Hockey has today become a very popular pastime indoor sport.

What is the name of the professional basketball league in America?

- **The National Basketball Association (NBA) is the pre-eminent men's professional basketball league in North America.**
- **The National Football League (NFL) is the highest level of professional American football in the United States, and is considered the top professional American Football League in the world.**
- **The National Hockey League is widely considered to be the premier ['premiə] professional ice hockey league in the world.**

What state is called the state of Great Lakes?



Do you know the names of the Great Lakes?



- The Great Lakes consist of Superior The Great Lakes consist of Superior, Michigan The Great Lakes consist of Superior, Michigan, Huron The Great Lakes consist of Superior, Michigan, Huron ['hjuər(ə)n], Erie The Great Lakes consist of Superior, Michigan, Huron ['hjuər(ə)n], Erie ['ɪəri], and Ontario, they form the largest group of freshwater lakes on Earth, containing 21% of the world's surface fresh water

Where do most people live in the United States?

- Most of the people of the United States live around the edges [edʒɪz] (по краю) of the country, along the Atlantic, Pacific, Gulf of Mexico and Great Lakes shores.



What is the weather in the USA?

- The country is so large that it covers a variety of different temperatures, climate conditions and weather zones across the country. Humid subtropical climate makes up the majority.



How many people live in United States?. And what about in Russia?

- Slightly over 300,000,000

How did Pennsylvania get its nickname?

- Pennsylvania's nickname is the "**Keystone State**". It got its nickname because during colonial times, it was the keystone of the colonies.

What state is oil produced?

- The main part of oil (map) is produced in Texas (26%), Alaska (24%), Louisiana (16%), California (13%).

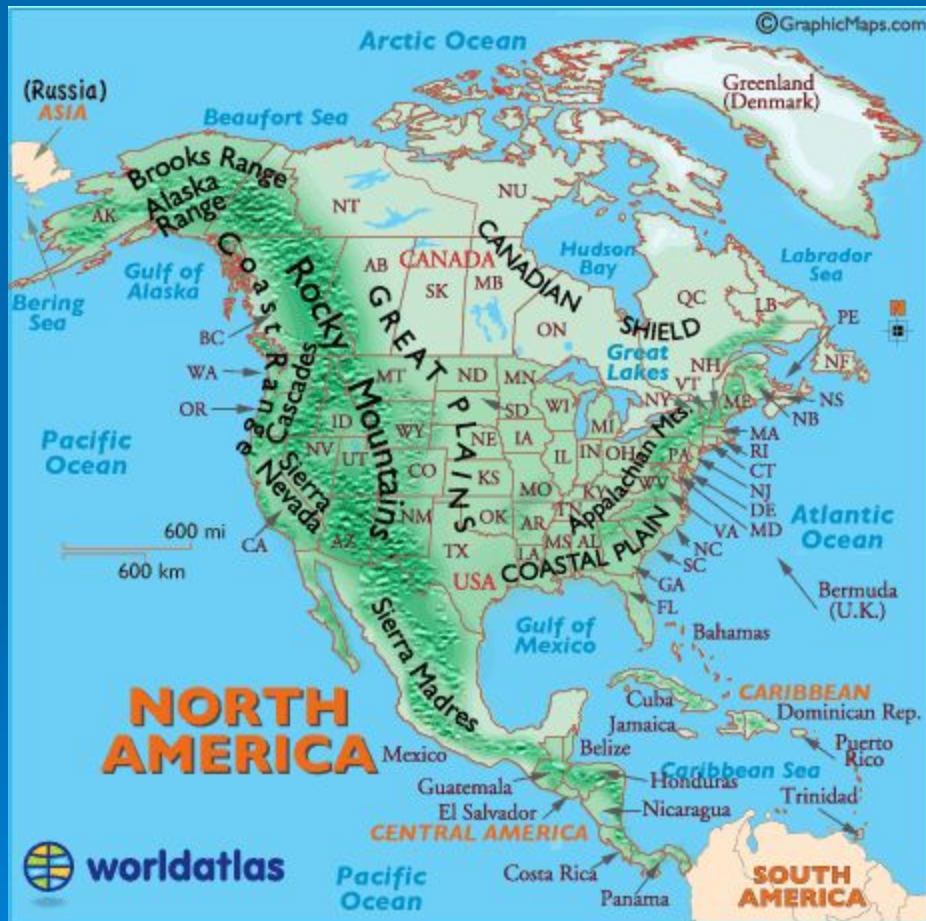
What state is surrounded by the 4th of the 5th Great Lakes?

□ Michigan





The Rockies stretch from Alaska down to the south of the country.



The Sierra Nevada

- is a mountain range in the western United States, between the Central Valley of California and the Basin and Range Province. The Sierra runs 400 miles (640 km) north-to-south, and is approximately 70 miles (110 km) across east-to-west. Notable Sierra features include Lake Tahoe.



Notable Sierra features include Lake Tahoe Notable Sierra features include Lake Tahoe, the largest alpine lake in North America

- alpine ['ælpain]- альпийское, высокогорное

Lake Tahoe is a major tourist attraction in both Nevada and California



Lake Tahoe Lake Tahoe is located along the border between California Lake Tahoe is located along the border between California



It is home to a number of ski resorts,







both Nevada and California. It is home to a number of ski resorts Lake Tahoe is a major tourist attraction in both Nevada and California. It is home to a number of ski resorts, summer outdoor recreation, and tourist attractions.



At the outlet of Lake Tahoe there is a nice

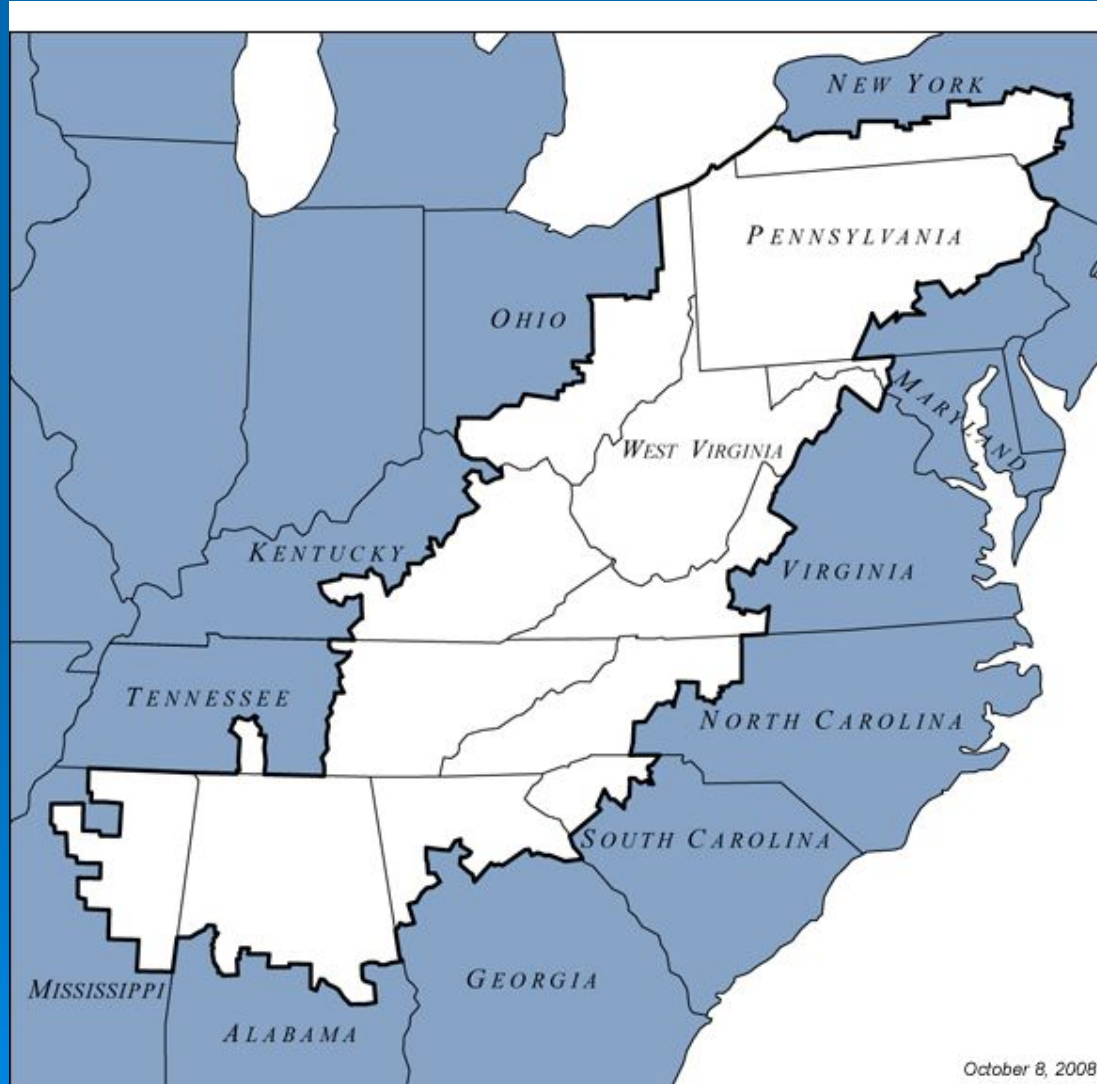
Lake Tahoe Dam



The Rockies



The Appalachian Mountains



October 8, 2008

The complex of waterfalls on the Niagara river, which separates the U.S. state of New York from the Canadian province of Ontario. Niagara falls are “the Horseshoe” waterfalls.





are located on the Niagara River, which drains Lake Erie into Lake Ontario. The Niagara Falls are located on the Niagara River, which drains Lake Erie into Lake Ontario, the combined falls form the highest flow rate with a vertical drop of water of more than 165 feet (50 m). Horseshoe

■ **Drains-** Falls is the most powerful waterfall in the world.





The Coyote Buttes is undulating slopes of sand dunes, spanning South Central Utah and North Central Arizona.



- undulating ['ʌndjələɪtɪŋ]- волнообразный
- slope [sləʊp] - склон, скат
- Buttes [bju:tɪs]- холмы с крутыми склонами (на равнине)
- Span- охватывать

The slope of the Coyote Buttes is one of the most popular natural attractions of the Colorado plateau was formed during the Jurassic period, about two hundred million years ago .



- Plateau ['plætəu] - плато, плоскогорье, плоская возвышенность
- Jurassic period [dʒu'ræsi:k] – юрский, относящийся к юрскому периоду
- coyote [kɔɪ'əuti]- ЛУГОВОЙ
ВОЛК ЛУГОВОЙ
ВОЛК, КОЙОТ

Yellowstone National Park is a national park located primarily in the U.S. state of Wyoming, although it also extends into Montana and Idaho.



- extend
[ɪk'stend]-
простира-
ться
- primarily
[praɪ'mer(ə)li]-
в основном, главным
образом
- Although
[ɔ:l'dəu]- хотя

Yellowstone National Park can boast of many natural wonders.



The real wonder of nature in the National Yellowstone Park is Grand Prismatic Spring.
In the Yellowstone Park there is almost half of the geysers exiting on the Earth.



Thanks to the Yellowstone River, tourists to the Grand Canyon of Yellowstone have three spectacular sights in the Lower, Upper and Crystal Falls



The Old Faithful Geyser is the most known and visited thermal phenomenon in the world



□ geyser
['gaɪzə],
['giːzə]-
гейзер

The Old Faithful Geyser erupts every 90-odd minutes to throw up 3,700 to 8,400 gallons of boiling water to a height ranging between 32 to 60 meters.



□ **erupt**
[ɪˈrʌpt] -
извергать

□ **gallon**
[ˈɡælən] -
(мера
жидких и
сыпучих
тел;
английски
й галлон =
4,54 л;
американс
кий = 3,78
л

Height [haɪt]-
высота

The Old Faithful Geyser has plenty of lodging and dining options for the herd of tourists that throng in the Park.



- throng [θrɒŋ] собираться толпами
- lodging ['lɒdʒɪŋ]- жилище, жильё сдаваемое в найм
- Plenty- множество
- dining options- кафе, рестораны

The Mammoth hot springs. They represent the cascades of water falling on natural terraces swirling clouds

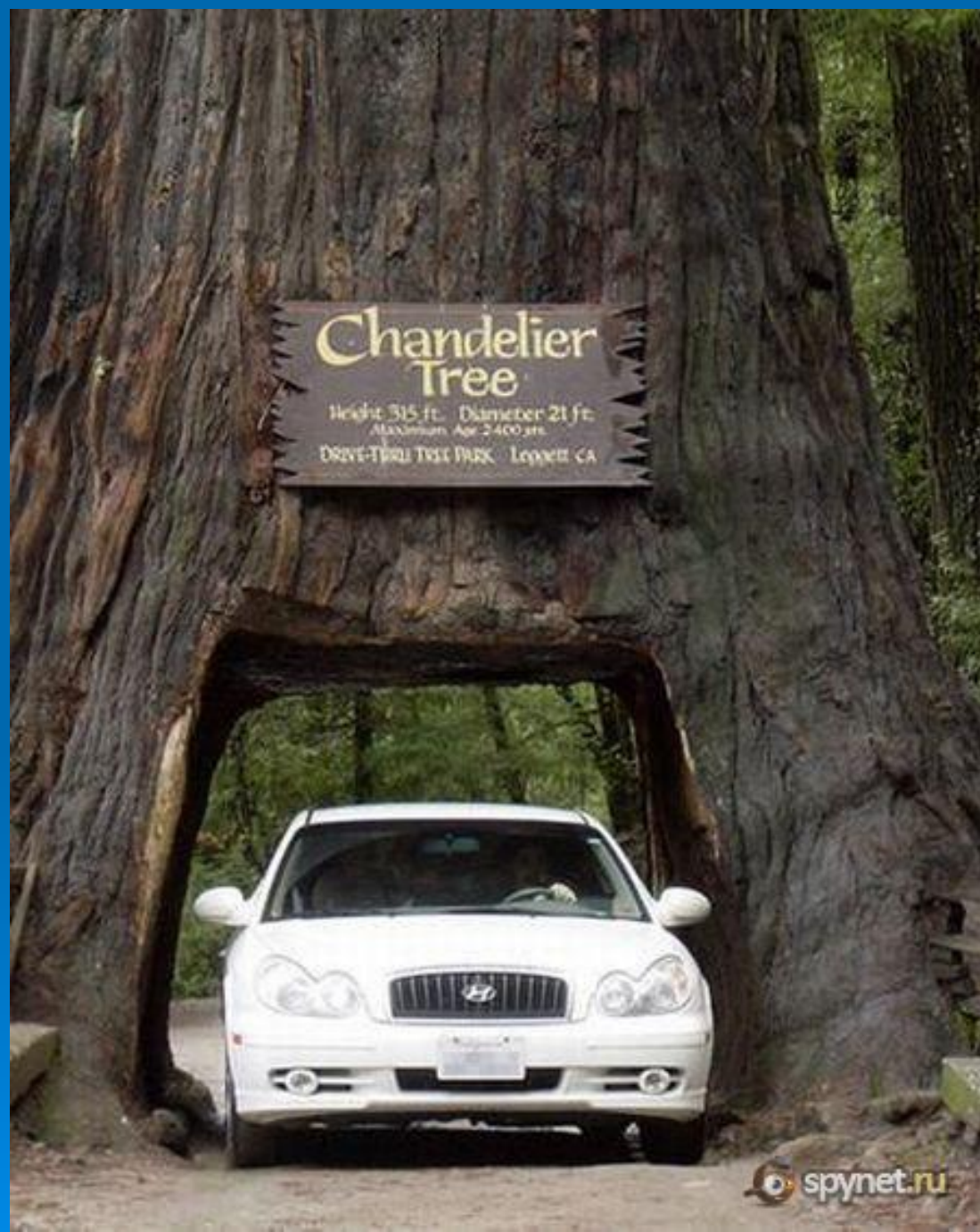


Hot springs-
горячие
источники

swirl [swɜ:l]-
кружиться,
обвивать,
обматывать

The Redwood National and State Parks (RNSP) are located in the United States The Redwood National and State Parks (RNSP) are located in the United States, along the coast of northern California





Redwood is a home to the tallest trees on Earth. Together, the National Park Service and California State Parks manage to keep these lands for the inspiration, enjoyment, and education of all people.



- It is famous for its **oaks woodlands** and **sequoia trees** . It is an **evergreen** . It is an evergreen, long-lived **tree** . It is an evergreen, long-lived tree living 1,200–1,800 years. This species includes the tallest trees living now on Earth, reaching up to 115 m in height and up to 8 m. in **diameter at breast height** breast [brest]- грудная клетка

- diameter [daɪ'æmɪtə] - диаметр
sequoia [sɪ'kwɔɪə] - секвойя



