



The Natural History Museum, London – a 21st century museum

**Ilya Lahmanov, Alukaev
Abdurahman**



The Natural History Museum, London



A scientific research institution and visitor attraction



- Founding collections 1750s
- Moved to present location 1881
- 350 research scientists and curators
- **5 million visitors per year**
- 15 million visits to our website:
- 1 million visits to our touring exhibitions

We are an international organisation

Active in over 70 countries:

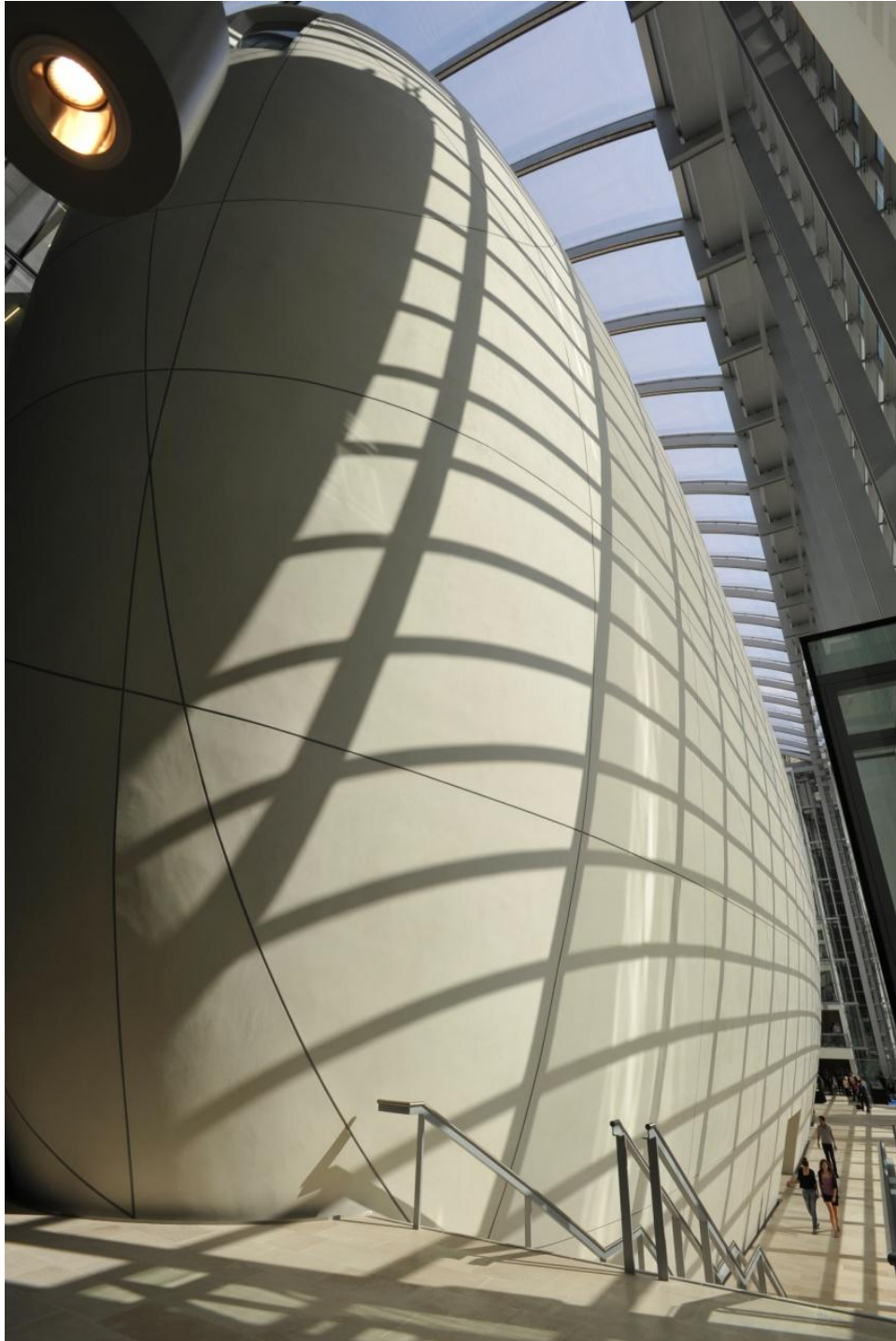
- Collections development
- Scientific research
- Capacity-building and training
- Touring exhibitions
- Consultancy projects – science research and museum development
- Networks and partnerships



Public engagement with science



The Darwin Centre



The Darwin Centre

- Reveals the collections
- Safeguards the collections
- Provides high-quality research facilities



Engaging with real scientists



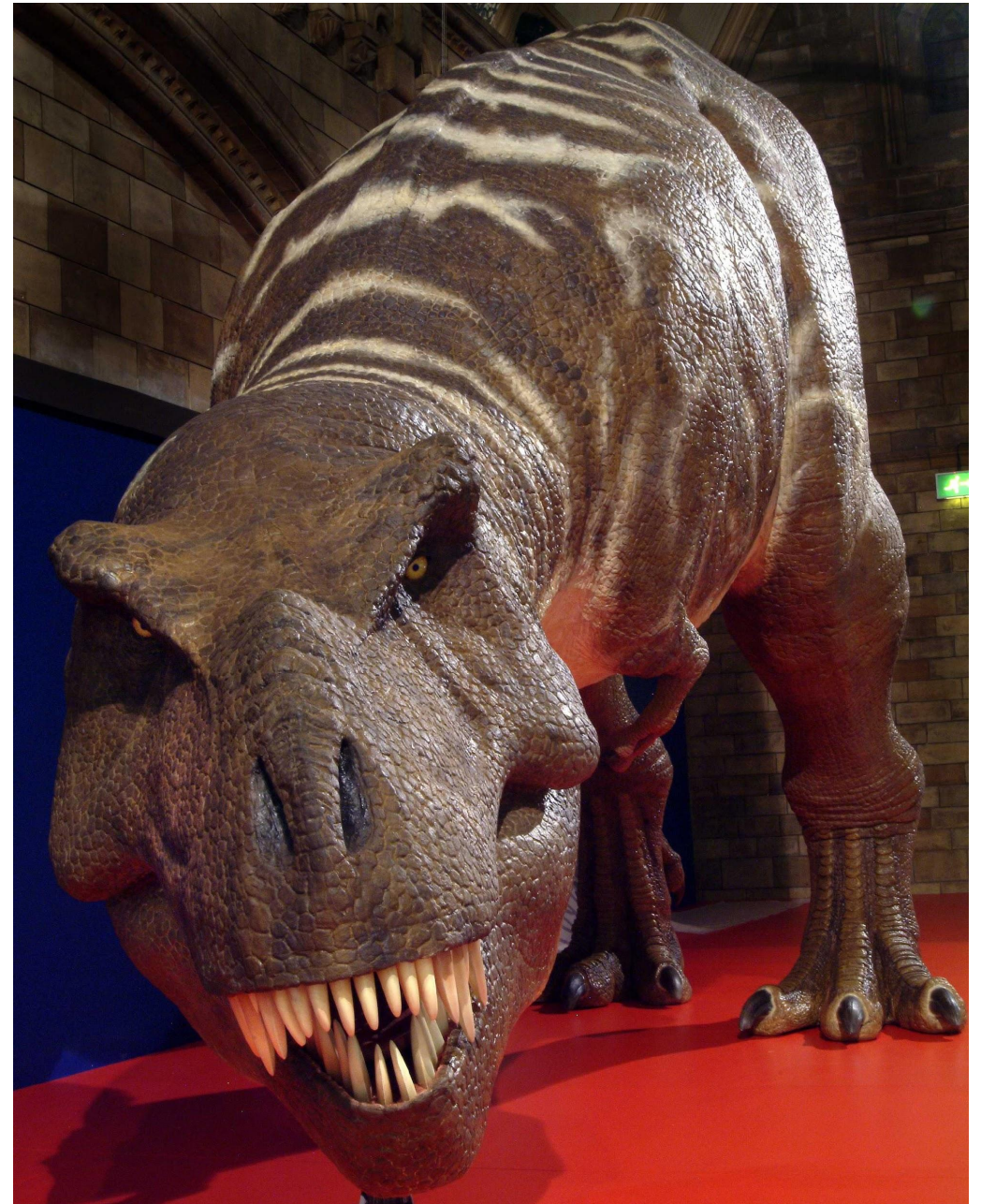
Exhibition development

We develop exhibitions and attractions around the world, using our science expertise and our experience as a world-leading visitor attraction



Touring exhibitions Touring выставки

- Portfolio of 10 blockbuster touring exhibitions
 - featuring amazing life like animatronics, stunning wildlife photography,
 - specimen-rich art science installations.



Science consultancy

The Natural History Museum is able to deliver a range of specialist consultancy, research and education services, such as:

- Analytical and imaging facilities
- Biomedical
- Coastal and marine environmental assessment
- Collections management
- Engineering geology
- Expert witness services
- Freshwater and terrestrial environment assessment
- Mining
- Petroleum







**NATURAL
HISTORY
MUSEUM**

thank you for your attention!!!