

# The history of automobile

# industry



# Stories of development of the leading automobile companies of the world.

## With that all began?...



The first mentions of a wheel were in Mesopotamia in 4th millenium BC.The Predecessor of a wheel it is possible to consider a wooden skating rink .



# ***THE HISTORY OF THE CAR***

---

The first known drawings of the car belong to Leonardo da Vinci .

In 1769 the French inventor Kjunon has tested the first sample of the car with the steam engine .

In XIX-th century stagecoaches for usual roads were constructed in England, France and were used in European countries, including Russia. B 1791 the Russian inventor Ivan Kulibinym invented a selfvelide.



Продажи новых легковых автомобилей и коммерческого транспорта в России по маркам в 1-ом полугодии 2009г							
МАРКИ		½ 2009	½ 2008	%	июнь 2009	июнь 2008	%
LADA	1	179870	322652	-44%	28851	48900	-41%
CHEVROLET	2	60157	125701	-52%	10639	21966	-52%
FORD	3	49057	97626	-50%	4554	19230	-76%
NISSAN	4	39273	77547	-49%	3874	14589	-73%
TOYOTA	5	38015	88747	-57%	5393	18300	-71%
HYUNDAI	6	37095	102814	-64%	5015	18069	-72%
RENAULT	7	36610	56590	-35%	7165	10496	-32%
KIA	8	30606	49681	-38%	5256	8558	-39%
GAZ	9	27899	69306	-60%	5062	11290	-55%
DAEWOO	10	27642	52525	-47%	4178	9856	-58%
OPEL	11	21823	53523	-59%	3248	9895	-67%
VOLKSWAGEN	12	21467	20586	4%	3292	5035	-35%
MAZDA	13	20874	38102	-45%	3581	7196	-50%
SKODA	14	19415	23950	-19%	2582	4714	-45%
MITSUBISHI	15	19343	59274	-67%	4051	12622	-68%
PEUGEOT	16	16918	20331	-17%	2648	4026	-34%
HONDA	17	14845	34926	-57%	1523	6140	-75%
YAZ	18	13251	27810	-52%	2685	4814	-44%
SUZUKI	19	8616	21344	-60%	1705	3264	-48%
BMW	20	7829	8913	-12%	1190	1753	-32%
FIAT	21	7471	11410	-35%	1355	2078	-35%
AUDI	22	7404	8660	-15%	1398	1668	-16%
CITROEN	23	6809	4901	39%	1237	939	32%
MERCEDES-BENZ	24	5117	8526	-40%	947	1812	-48%
LAND ROVER	25	4897	10459	-53%	453	1978	-77%
SUBARU	26	4716	10087	-53%	612	2053	-70%
UDK	27	4364	13762	-68%	496	2565	-81%





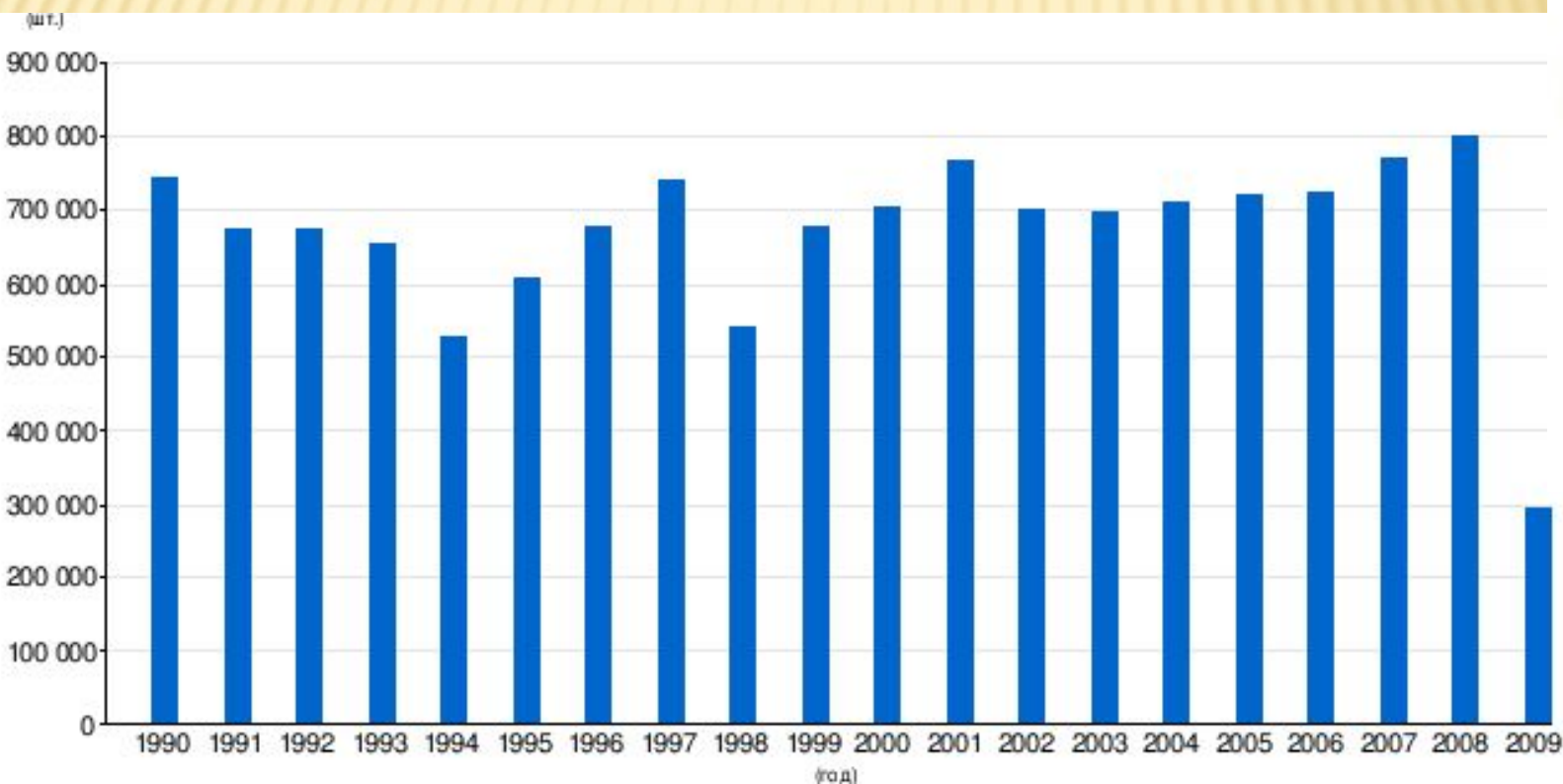
On July, 20th, 1966, after the analysis of 54 various building areas, the Central Committee of the CPSU and the Soviet government took the decision of building new large automobile factory in the city of Tolyatti. The preparation of technical design was passed to Italian automobile concern "Fiat". On January, 3rd, 1967 Central Committee VLKSM declared the building of the Volga car factory.



On March, 1st, 1970 the first 10 bodies of the future cars were given out by welding shop, and on April 19 1970 year first six cars was produced from the main conveyor of factory.



On July, 16th, 1971 the 100-thousand car with brand "VAZ" was produced. On December, 22nd, 1973 — the million car was produced. The capacity of the factory is 660 thousand cars a year.



# Автомобили АвтоВАЗа



2101

INETAUTO ru  
АВТОМОБИЛЬНЫЙ ЖУРНАЛ



2102



2103



2104





2106

AVANCE TO  
AUTOPRAU



2107



2108



2109



21099



2110



2111





2112



2113



2114



2115



Лада Приора







# AUTOMOBILE FACTORY IN GORKY



It was founded in 1932 in Nizhni Novgorod. Then the factory was named «the Nizhniy Novgorod automobile factory of the name V.M.Molotov».

The Gorki automobile factory produces:

5 % - cars,

55,6 % - lorries,

47,9 % - buses Russian cars. For a year the factory produces more than 230,000 cars,

from them – 53,4 % cargo cars,

17,2 % - buses, 26,7 % - automobile cars. An annual turn of the enterprise is more than 60 billion rbl.



ГАЗ-А





ЗИМ



ГАЗ-13 (Чайка)



ГАЗ-3102



ГАЗ-24





ГАЗ-311055



ГАЗ-310221



Волга-siber





ГАЗ-2310 Соболь



ГАЗ-2752



<http://avtotehtsennir-gaz-ya.tiu.ru/>  
ГАЗ-3302 Газель (с тентом или без тента)



ГАЗ-2752 Соболь-Комби





ГАЗ 03-30









The military technology assemble at this factory plant. The armoured troop-carriers produced by the enterprise, are better than foreign military vehicles in their characteristics.



GAZ-46



GAZ - Волк





БРДМ-1



Боевая разведывательно-дозорная машина БРДМ-2



БТР-40



БТР-60





БТР-70



БТР-80



БТР-90



ГАЗ-66





ГАЗ-33023 ГАЗель-фермер



ГАЗ-33086 Земляк



ГАЗ-3409 Бобр



ГАЗ-34039К Ирбис



ГАЗ-34039

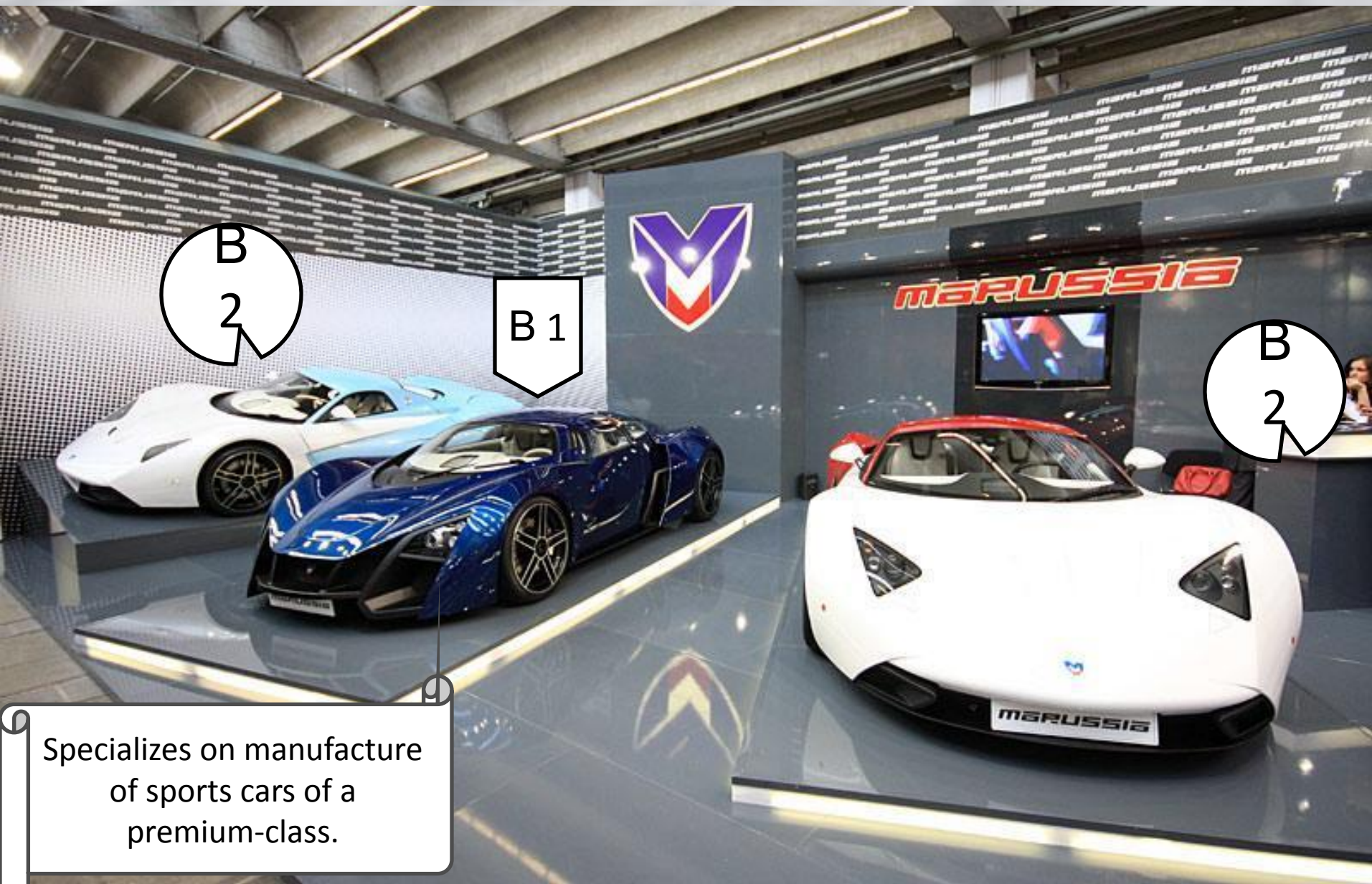


# MARUSSIA MOTORS



Company Marussia Motors is based in 2007 by Nikolay Fomenko and Efim Ostrovsky.





B  
2

B 1

B  
2

Specializes on manufacture  
of sports cars of a  
premium-class.





B 1







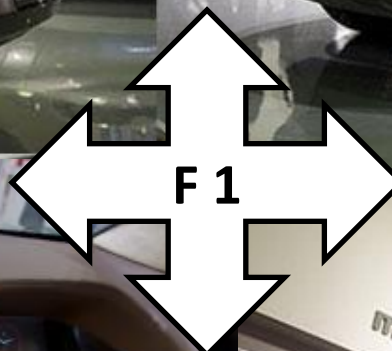




The company factory is located in Moscow, number of the personnel of the company makes nearby 300 persons.











# Chevrolet



Chevrolet Motor Car company is formed in 1911 founder of the company of General Motors / by Dzheneral Motors William Djurantom. Having ceased to operate General Motors / Dzheneral Motors, he vigorously created the new companies.



Chevrolet 6(first car)





Chevrolet Lanos



Chevrolet Aveo



Chevrolet Lacetti



Being basically the businessman, instead of the engineer, before leaving from General Motors / Dzheneral Motors Djurant of visors with itself perspective and interesting working out of the car over which improvement he has invited to work the popular racer Lui of Chevrolet who has given to the new company the well-known sonorous name.





Chevrolet Niva

autochel.ru



Chevrolet captiva



Chevrolet Cruz





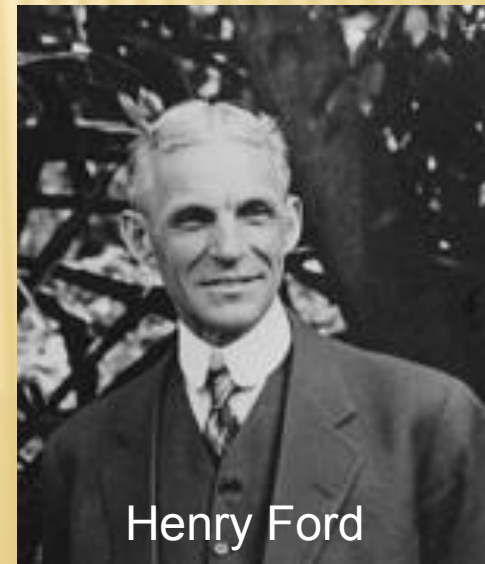
# FORD



- The company was based in 1903 by Henry Ford. Ford company has received popularity as first-ever applied the classical car assembly conveyor.
- The first model obtained a mass recognition. It was Ford Model T, produced 1908-1927.



Ford Model T



Henry Ford





ГАЗ-АА





# BMW

On december, 3<sup>d</sup>, 1896 in the city of Eisenach Henry Erhardt (Heinrich Ehrhardt) founded the factory on manufacture of cars for needs of army and, bicycles. The probably, Erhardt and let out soldier's kitchens if didn't see, what success accompanied carriages.

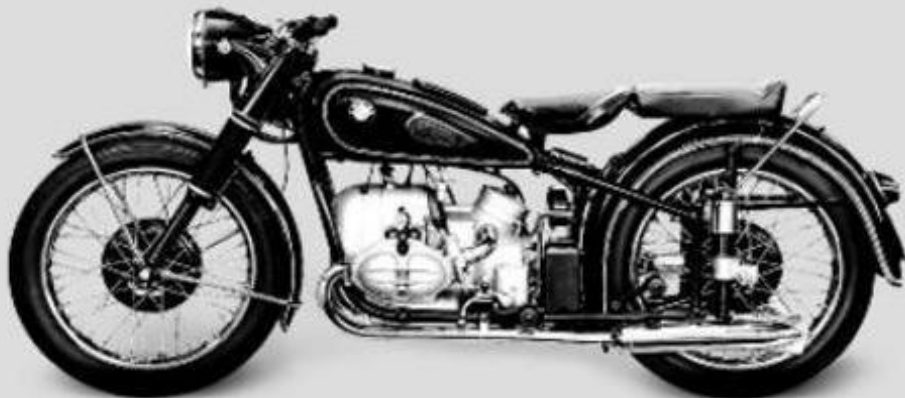


первый мотоцикл BMW — R-32



Dixi 3/15 PS





BMW R-68 самый быстрый  
мотоцикл 50-х годов



BMW 326 Cabriolet



BMW 502



BMW 328 Roadster



BMW Isetta 250

On march, sevyth, 1916 its company  
was registered under the name «Of  
Bavarian aviation factories» (BFW).





BMW 335



BMW 501



BMW 1500



BMW M1



BMW 520-первая модель с автоматической коробкой передач(1972г)





BMW 323(1975 по 1983 г)



BMW 7(с 1977г)



BMW 6 Series



BMW M3 (E-30) ,1990 г.



BMW Z1



BMW 8 Series.





BMW M5 (E34), 1992г.



BMW M3 (E-36) ,1992 г.



BMW 7 Series (E-38),1996 г.



BMW 5 Series (E-39),1996г.



BMW Z3,1997г.





BMW 3 Series (E-46).



BMW Z3 Coupe



BMW M5 (E-39)



BMW X5, 1999г.



BMW

After many years of manufacture of BMW includes: motorcycles, cars and aviation engines.





BMW M6

In 2002 concern of BMW Group has achieved record quantity of sales — 1 057 000 cars, and also it was the winner of competition «Car of the year in Russia».





# Toyota



It was founded in 1933.

The elder son Kiitiro Toyoda of the owner of the company Sakiti Tojody (Sakichi Toyoda) opened A.



Toyota Model  
AA, 1935г..



Toyota Model SA., 1947г.



Киитиро Тойода.





In 1935 the work on the first passenger car was finished. It got the name Model A1, and the first truck Model G1. The first export delivery has been made.



Toyota Land Cruiser.



Toyota Publica., 1961r.



Toyota Crown.



Toyota Corolla.





Toyota Celica.



Toyota Camry.



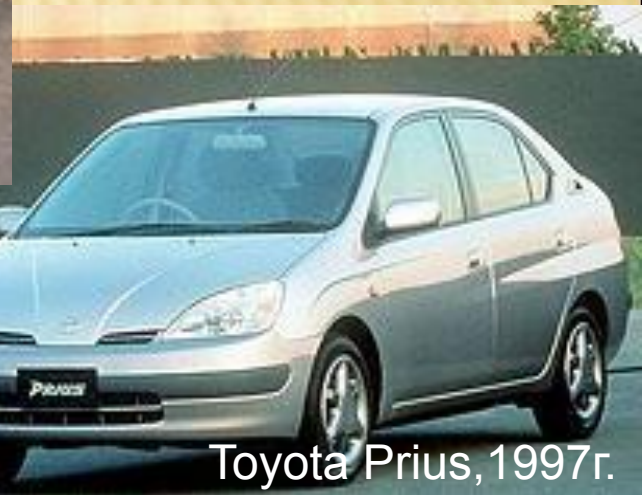
Toyota  
4Runner., 1988r.



Lexus ES250.

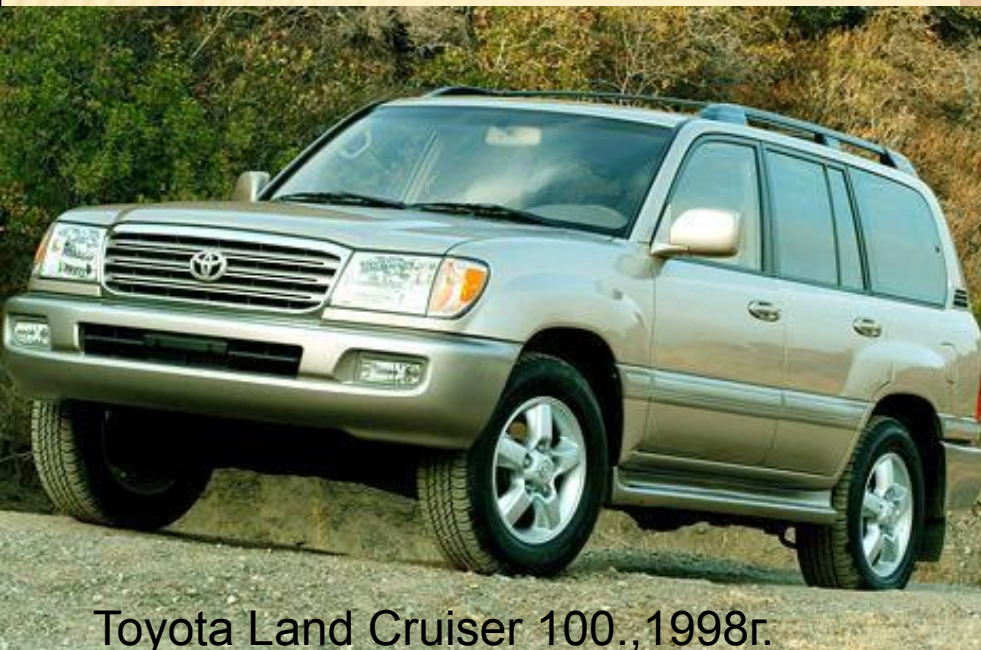


Toyota RAV4.



Toyota Prius, 1997r.





Toyota Land Cruiser 100., 1998r.



Toyota  
Avensis., 1998r.

Today Toyota is one of the largest world manufacturers of cars.



Toyota RAV4 2., 2000r.



## Сравнительная таблица первых серийных автомобилей рассматриваемых компаний

Марка и модель автомобиля	Год начала выпуска	Год окончания выпуска	Объём двигателя, см <sup>3</sup>	Кол-во л.с.	Кол-во цилиндров	Максимальная скорость, км/ч	Начальная цена	Конечная цена	Было выпущено
ВАЗ-2101	1970	1984	1198	64	4	142	5000	4000	2млн.710тыс.930
Газ А	1932	1936	3285	40	4	113	3500	2200	41917
Chevrolet Classic-Six	1911	1913	4,836	40	6	97,5	2500 долларов	2000 долларов	173 тыс.261
Ford Model T	1908	1927	2,893	22,5	4	70	825-850 долларов	350 долларов (1916-1917)	15 млн 175 тыс. 868
БМВ - Dixi 3/15 PS	1904	1929	0,750	15	4	75(105)	3200 рейхсмарок	2850 рейхсмарок	15822 тыс.
Toyota AA	1936	1943	3,389	65	6	100			1 млн.341тыс.587

