

# EMbient

"We Engineer Ambient Learning Environments"



# EMбиент: Обучение в реално време



еглед

- Дефиниране на обучение в реално време
- Налични курсове
- Предложения

# ЕМбиент: Обучение в класна стая(ILT)



ILT обучението е:

- Общо прието
- Златен стандарт
- 62% от формалното обучение

ILT обучението също е:

- Разнородно
- Несъвместимо
- Трудно за проследяване от мениджърта
- Скъпо



## EMбиент: Обучение в реално време



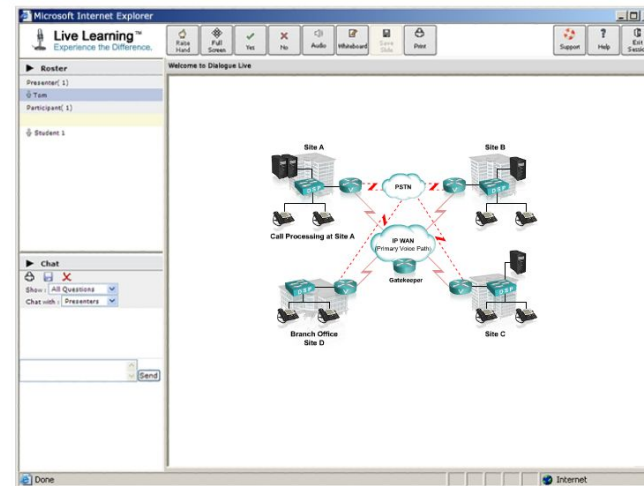
### EMбиент решение: Expert Live & Expert Encore

- Връзка с експерти по всяко време
- Функционална и удобна виртуална класна стая
- Продължаващо обучение
- Възможност за проследяване и измерване на резултатите от обучението

# EMbient: Expert Live & Expert Encore

## Expert Live

- Екипна работа
- Многократни обучения
- Високо качество
- Кратки сесии, до 3 часа



```

RouterA#show ip route
Codes: C - connected, S - static, I - IGRP, R - RIP, M - mobile, B - BGP
       D - EIGRP, EX - EIGRP external, O - OSPF, IA - OSPF inter area
       N1 - OSPF NSSA external type 1, N2 - OSPF NSSA external type 2
       E1 - EGP, S1 - IS-IS level-1, S2 - IS-IS level-2, * - candidate
       U - per-user static route, o - ODR
       T - traffic engineered route

Gateway of last resort is not set

172.16.1.0/24 is subnetted, 1 subnets
C       172.16.1.0 is directly connected, Ethernet0
C       10.0.0.0/24 is subnetted, 1 subnets
C       10.2.2.0 [1/0] via 10.1.1.2, 30:00:01, Serial1/2
C       192.168.1.0/24 is directly connected, Ethernet0
C       192.168.1.0/24 [1/0] via 10.1.1.2, 30:00:01, Serial1/2
    
```

## Expert Encore

- 24x7 Достъп до Експерти
- Съдържание въздействащо върху възприятията на участниците
- Проследяване & Справки

# EMbient: Допълнителни Материали

## Installing and Upgrading

**Overview**

One of the first steps in deploying Exchange Server 2003 is installing it. In this module, you will examine the steps you must take to install Exchange Server 2003. You will discover the ways you can prepare the Windows Server operating system and Active Directory to support Exchange Server 2003. In some cases, you will not be installing Exchange Server for the first time in your organization. In this module, you will also introduce you to the process for upgrading from Exchange Server 2000. You will also see the new features Exchange Server 2003 offers: Manage and Active Directory Users and Computers.

**Objectives**

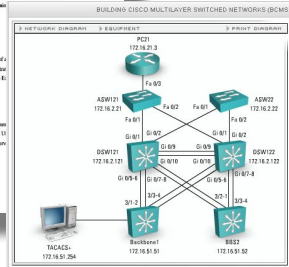
Upon completing this module, you will be able to:

- Install Exchange Server 2003
- Describe how to install Exchange Server 2003 as part of a Windows Server operating system and Active Directory to support Exchange Server 2003.
- Identify and access the Exchange Server 2003 administration console.
- Describe how to upgrade from Exchange 2000 Server to E1.

**Outline**

The module contains the following topics:

- Installing Exchange Server 2003
- Installing Exchange Server 2003 as a Clustered Database
- Installing and Using Exchange Management Tools and UI
- Upgrading from Exchange 2000 Server to Exchange Server



Exchange 2003 is available in two editions:

**Exchange 2003 Standard Edition** is designed to meet the messaging and collaboration needs of small and medium-size corporations. Exchange 2003 Standard Edition includes:

- Exchange 2003.
- The flexibility to be configured as a Microsoft Office Outlook Web Access front-end server.
- 16-gigabyte (GB) data storage maximum.
- Recovery Storage Group.

**classnotes**  
Session 1 of 6

**Michelle Plumb**  
Instructor

**Basic Configs - Distribution**

You need to configure a distribution layer switch with a basic configuration in order to establish network connectivity. You also need to ensure that you have the ability to perform in-band management of your distribution layer device. In this lab, you are connected to the console port of a new and non-configured Catalyst 3550. You must configure the switch with a hostname, properly configure an IP address, provide passwords, and ensure ports are properly configured.

**Objectives:**

- Configure a distribution layer switch for in-band management.
- Configure a distribution layer switch for basic network connectivity.

**LAUNCH LAB**

- Лабораторни упражнения
- Практически тестове
- Менторинг
- Помощ за всеки един участник

THOMSON NETWORKS PRACTICE TEST

10.2.2.224 Host A  
10.1.1.224 Host B  
10.2.2.124 Host D  
10.1.1.124 Host C

Questions 5 of 66

The following outbound access list has been applied to E0 on Router A. Identify the hosts that could access host A.

access-list 75 permit 172.16.1.1

A. Host B  
 B. Host C  
 C. Host D  
 D. You can't access it from any hosts

Mentor Now | Cisco

MESSAGE HISTORY

- Mentor Now**  
Welcome to Mentor Now! We are here to help you with questions related to your course, 24 hours a day, 7 days a week.
- Message - Expert**  
Thank you for asking us, how may I assist you?

YOUR MESSAGE

SEND MESSAGE

## EMбиент: Expert Live & Expert Encore - Обобщение

### Expert Live

- Многократни сесии във виртуалната класна стая
- Достъп до записаните сесии
- Online Наръчник
- Лабораторни упражнения
- Практически тестове
- Менторинг



### Expert Encore

- Многократни сесии във виртуалната класна стая
- Достъп до записаните сесии
- Online Наръчник
- Лабораторни упражнения
- Практически тестове
- Менторинг

A decorative graphic consisting of overlapping yellow, red, and blue squares with a black crosshair.

# EMбиент: Обучения

---

## Cisco Systems

Associate & Professional certifications supported: Routing & Switching, Security, Voice, Wireless

## Microsoft Technical

MCSE/A 2000 & 2003, Exchange 2003, MCTS SQL Server 2005, Desktop Support

## CompTIA

A+, Network+, Security+, Project+

## (ISC)2

CISSP, SSCP

## Project Management

PMP, CAPM, Superior Project Management



A decorative graphic on the left side of the slide consists of overlapping yellow, red, and blue squares with a black crosshair.

# EMbient: Предложения

---

Гъвкави бизнес условия:

- Индивидуални класов (На Място)
- Достъп до всички курсове (B2B ценообразуване)
- Гъвкави схеми на плащане



Благодаря за вниманието

Екипът на 

Контакти:

София 1784 България, Цариградско шосе  
7км

Хай Тех Парк Изот, офис 214/215

Тел: + 359 2 971 8383

Факс: + 359 2 971 8398

[info@embient.eu](mailto:info@embient.eu)

