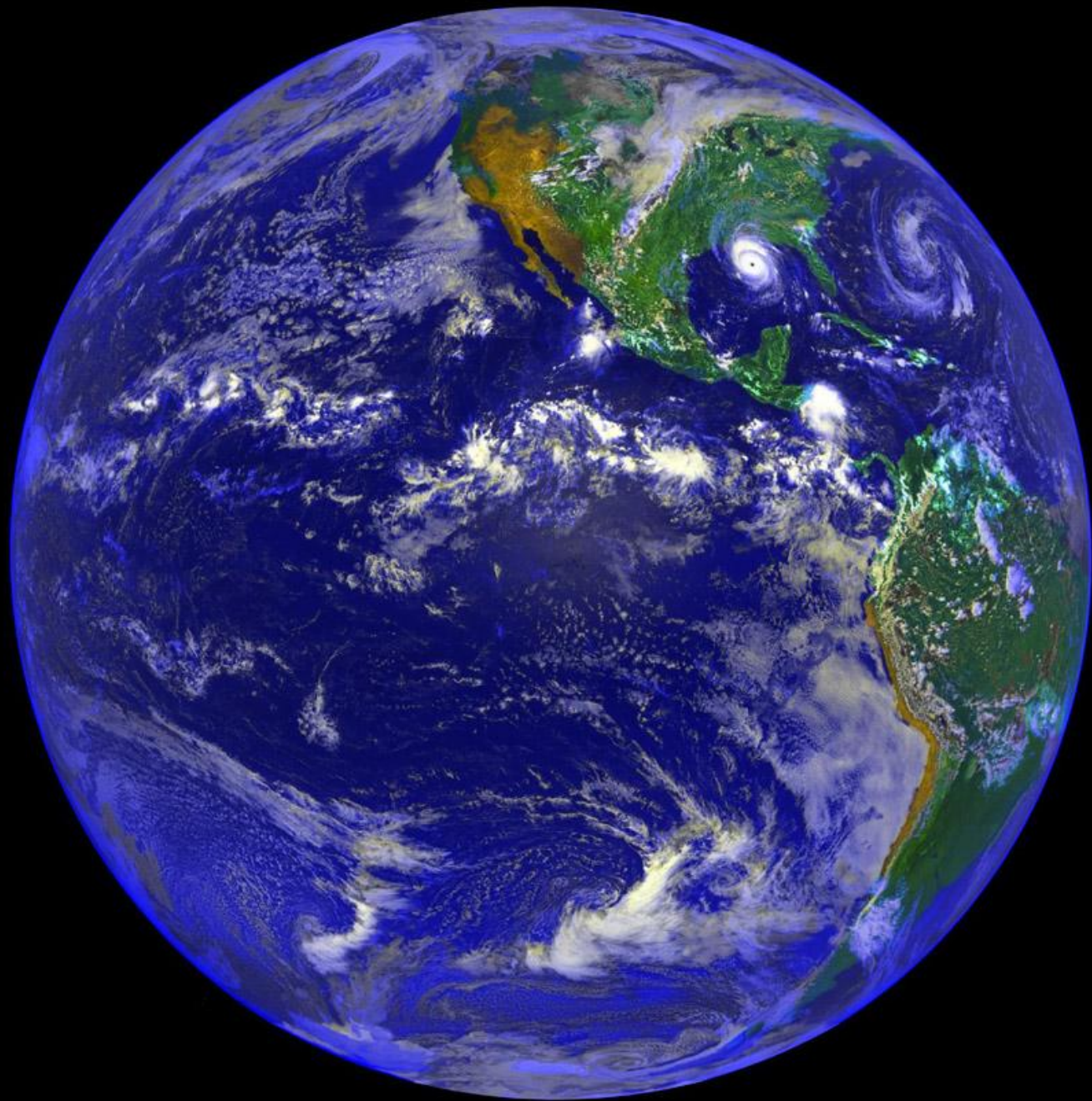




**Живая и Мертвая  
вода —  
миф или  
реальность?**



HI

The image features the letters 'HI' in a light blue, bubbly, rounded font. Below the letters is a wavy, blue line that resembles a splash or a stylized underline. The background is white and filled with numerous small, light blue bubbles of varying sizes, scattered around the text.

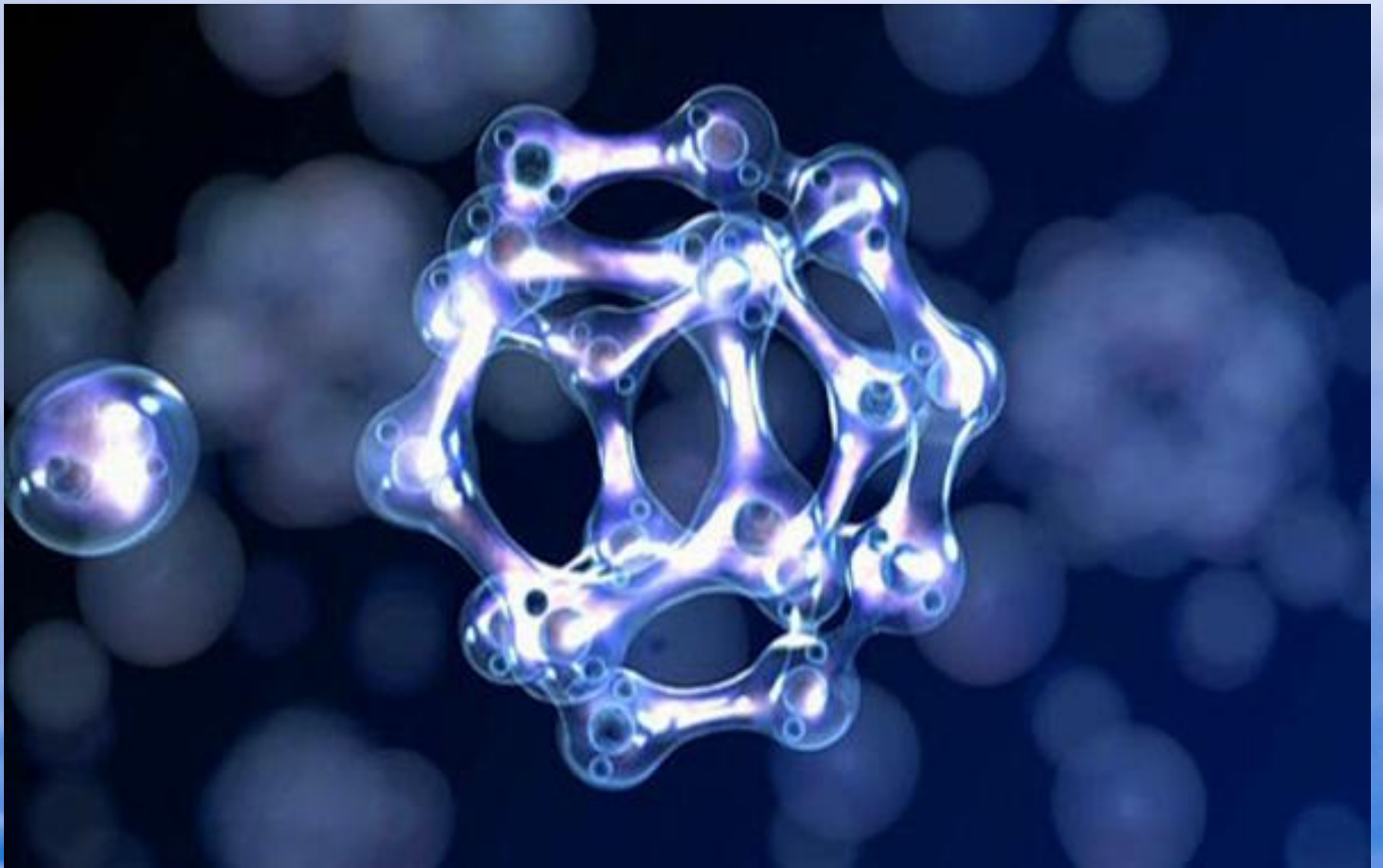


С.А. Ахмедов 1993

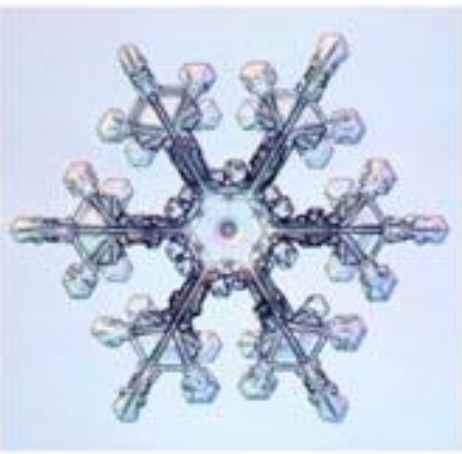
ЖИВЕТ И МЕРЕТ БОГА

# Агрегатные состояния воды





Кластер





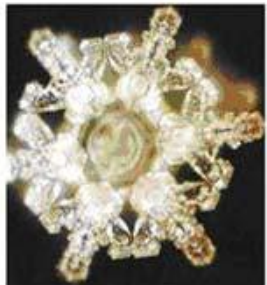
Лебединое озеро



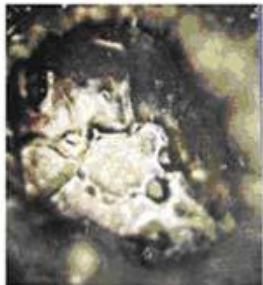
Аве Мария



Хэви - металл



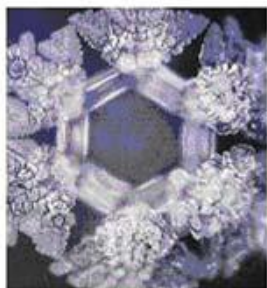
Горный источник



Водохранилище



После молитвы



Солнце



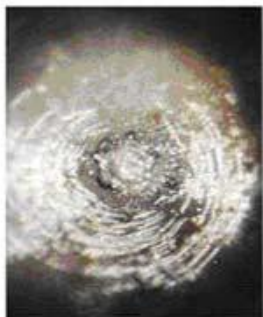
Фото дельфина



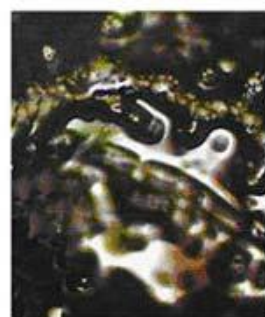
Мобильный телефон



Спасибо



Ты дурак

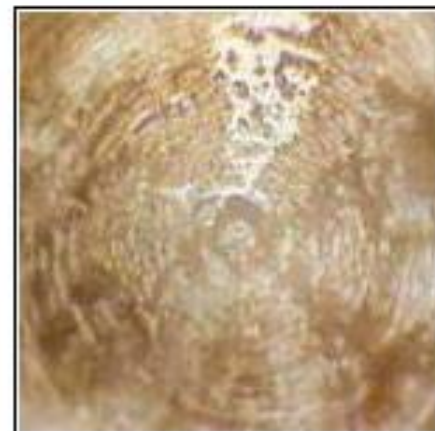
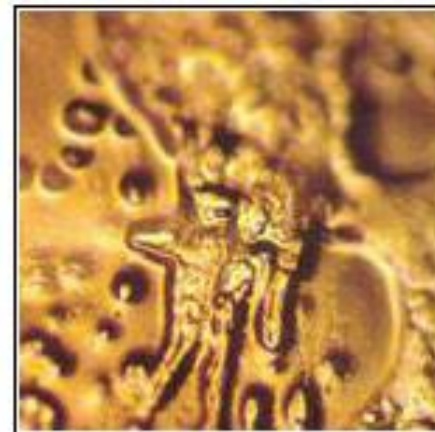


Дьявол

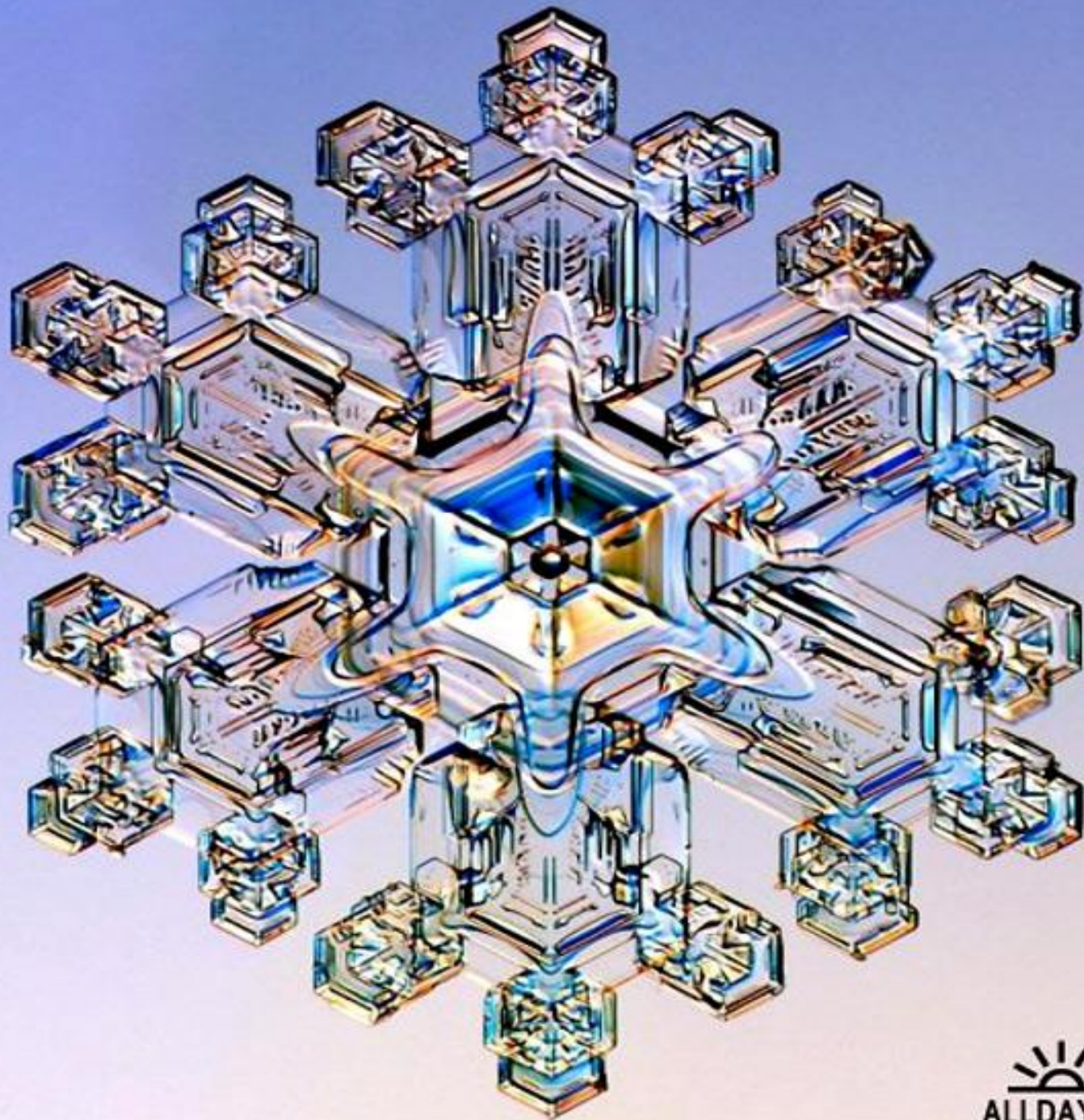
## Живая вода



## Мертвая вода













Микроволновая пена



Бетховен, симфония №6



The image features a stylized map of Russia, rendered in a glowing, ethereal style. The map is composed of intricate, white, vein-like patterns that define the geographical shape of the country. These patterns are set against a dark, almost black background, which is accented with soft, out-of-focus blue and white light spots, creating a sense of depth and atmosphere. The overall aesthetic is reminiscent of a digital or scientific visualization, possibly representing data or energy flow across the landmass.

тяжелый рок







спасибо