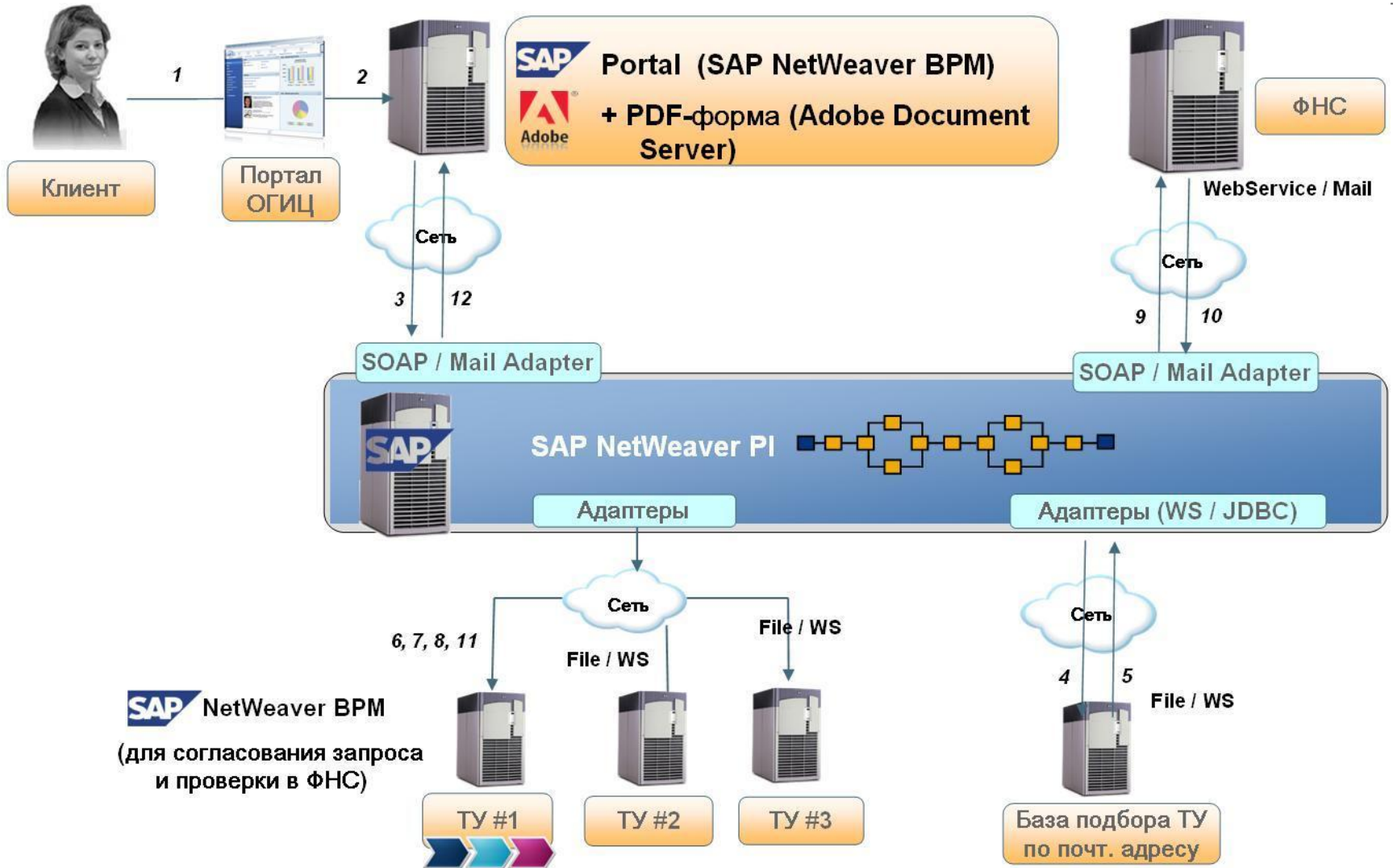


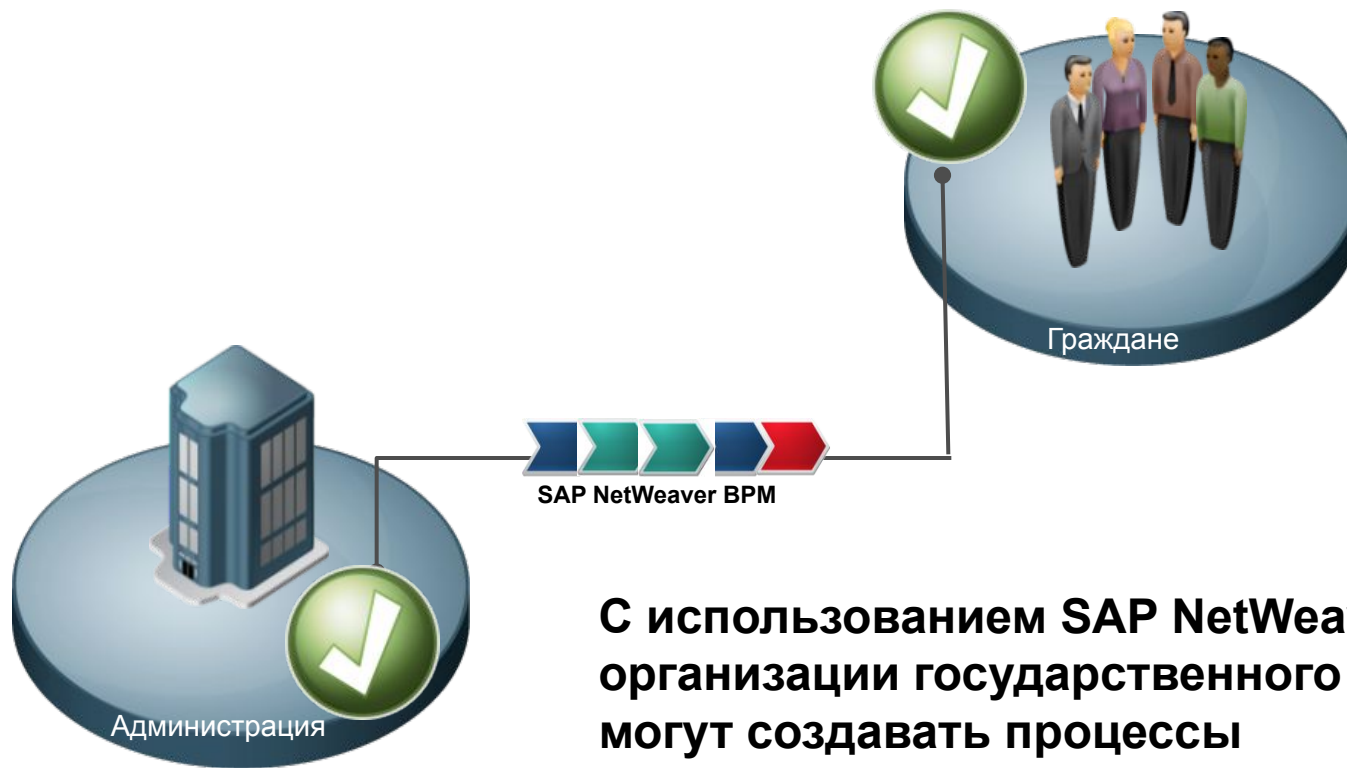
Организация межведомственного взаимодействия по оказанию услуг населению

28 октября 2011 г.

Пример системного ландшафта (SAP PI + SAP BPM) для запроса лицензий через ОГИЦ:



Наладьте взаимодействие с помощью SAP NetWeaver BPM



С использованием SAP NetWeaver BPM организации государственного сектора могут создавать процессы

- С четко определенной и прозрачной структурой
- Автоматизированной обработкой заявок
- С использованием бизнес правил для формирования бизнес логики процессов

Композиция бизнес-процессов SAP NetWeaver Business Process Management

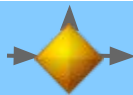


Визуальный редактор (процессов)

WebUI для конечного пользователя

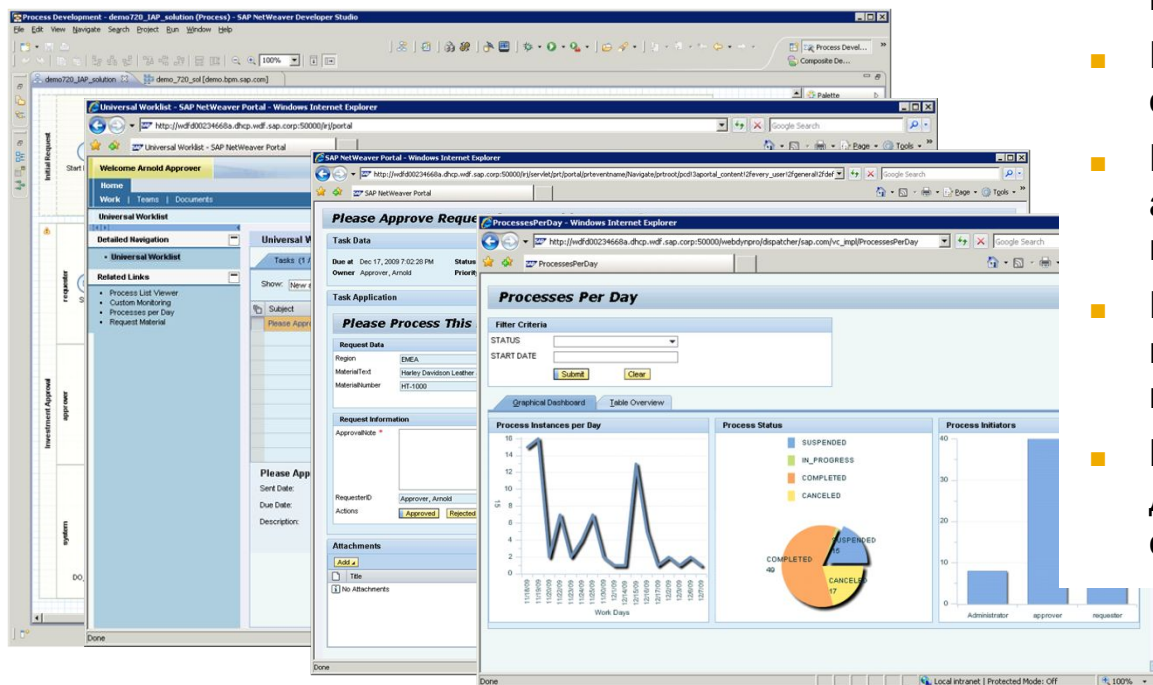


Сервер исполнения (процессов)



Прямой переход от бизнес-модели к исполняемому процессу

- Моделирование и выполнение композитного бизнес-процесса, поддержка бизнес-правил
- Наглядный графический редактор основанный на нотации BPMN
- Комбинирование пользовательских и автоматических действий в одной модели
- Поддержка основных процессных понятий (workflow, событие, задача, правило, контекст, роль, UI)
- Возможности мониторинга и анализа для определения возможностей оптимизации бизнес-процессов



Ключевые особенности SAP Netweaver BPM

Гибкие аналитические возможности

The image displays the SAP Netweaver BPM development environment. On the left, a 'Web Dynpro Explorer' shows a project tree for 'Investment Approval'. The main workspace shows a process diagram with steps like 'Purchase Requester', 'Purchase Manager', and 'Supplier'. A 'Process Content' dialog is open, showing a list of process content attributes: 'DO_PurchaseRequestType', 'DO_PurchaseOrderItemCategory', and 'DO_SelectedProductType'. Below the process diagram, a 'Collect Reporting Data' dialog is visible.

Overlaid on the right are two analytical dashboards:

Processes Per Day

Filter Criteria: STATUS (dropdown), START DATE (input field), Buttons: Submit, Clear.

Graphical Dashboard: Table Overview.

Process Instances per Day: Line chart showing instances from 07:00 to 10:00. Y-axis ranges from 0 to 24.

Process Status: Pie chart showing counts: IN_PROGRESS (21), COMPLETED (24), CANCELED (25).

Process Indicators: Bar chart showing counts for Administrator, Approver, Reporter, and Requestor. Y-axis ranges from 0 to 32.

SAP - Business Analyst Review

Peer and SIC code analysis

"Peer best" analysis

	SIC 3674	Worst	Itelo	Best	Competitor 2
Revenue Growth (1 yr)		001%	008%	016%	
CoGS (% of Revenue)	Competitor 1	057%	023%	023%	Itelo
SGA (% of Revenue)	Itelo	044%	044%	011%	Competitor 1
Op Income % (Reported)	Competitor 1	014%	033%	038%	Competitor 2

Revenue Growth (1 yr) progress bar: 001% to 016% (008% mark).

CoGS (% of Revenue) progress bar: 023% to 057% (023% mark).

SGA (% of Revenue) progress bar: 011% to 044% (044% mark).

Op Income % (Reported) progress bar: 014% to 038% (033% mark).

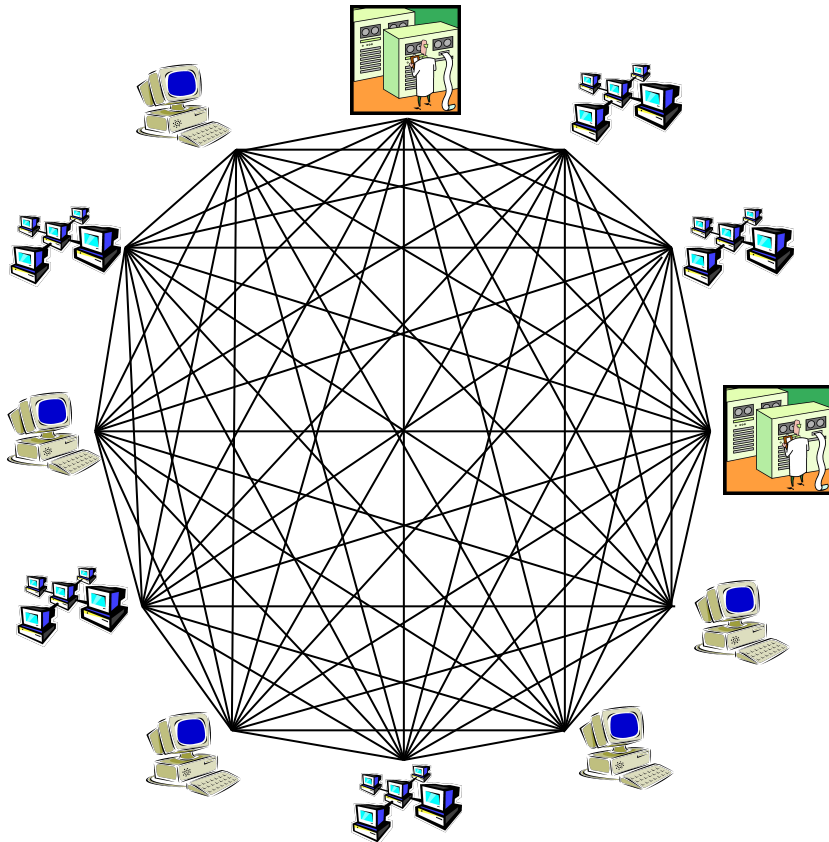
External Comparison: Bar chart showing Revenue Growth (1 yr) for SIC 3674, Itelo, and Competitor 2. Y-axis ranges from 000 to 000.

- Возможность построения отчетности по бизнес данным процесса, а также параметрам выполнения процесса (время, сроки, участники)

- Возможность включения диаграмм

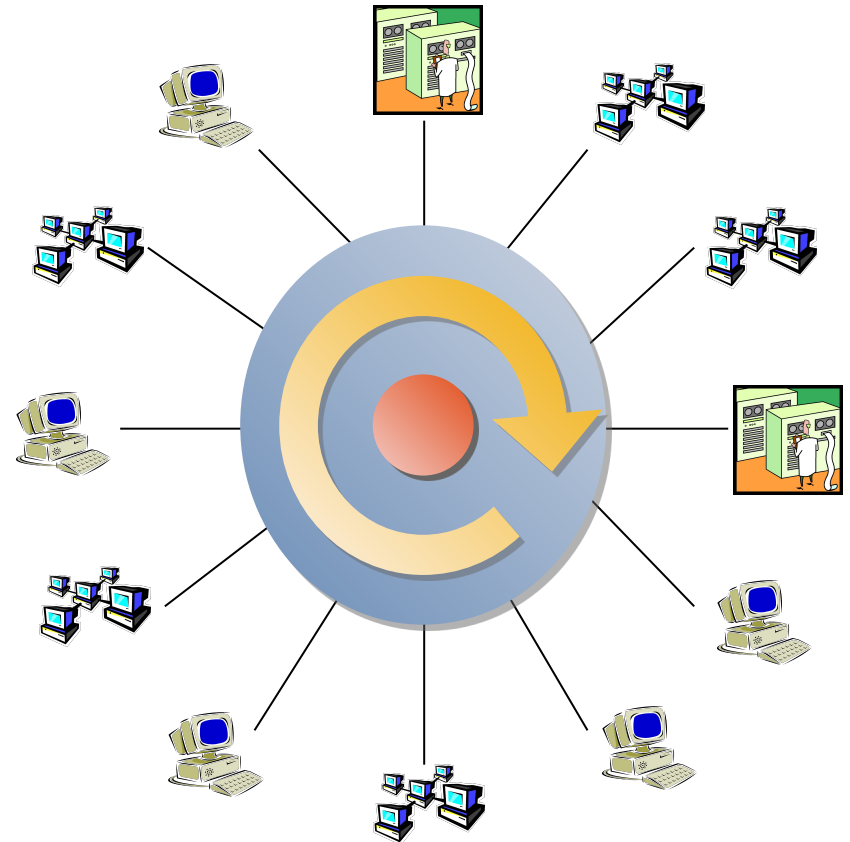
Интеграция с SAP NetWeaver. «Минус сложность.»

“Точка -Точка”



66

SAP Process Integration



12

Количество
интерфейсов

Интеграция с SAP NetWeaver. «Плюс возможность.»

XI/PI Content

- ✓ Готовые интеграционные пакеты
- ✓ Готовые сценарии и интерфейсы

ссBPM/BAM

- ✓ Business Process Management
- ✓ Business Activity Monitoring

- ✓ Универсальный и понятный язык описания интерфейсов
- ✓ Богатый инструментарий разработчика

XI Integration Builder

XI Adapter Engine / JCA

- ✓ Адаптеры SAP/non-SAP
- ✓ Открытая архитектура адаптеров

- ✓ Мониторинг всех интеграционных процессов в одной точке

XI Runtime Workbench

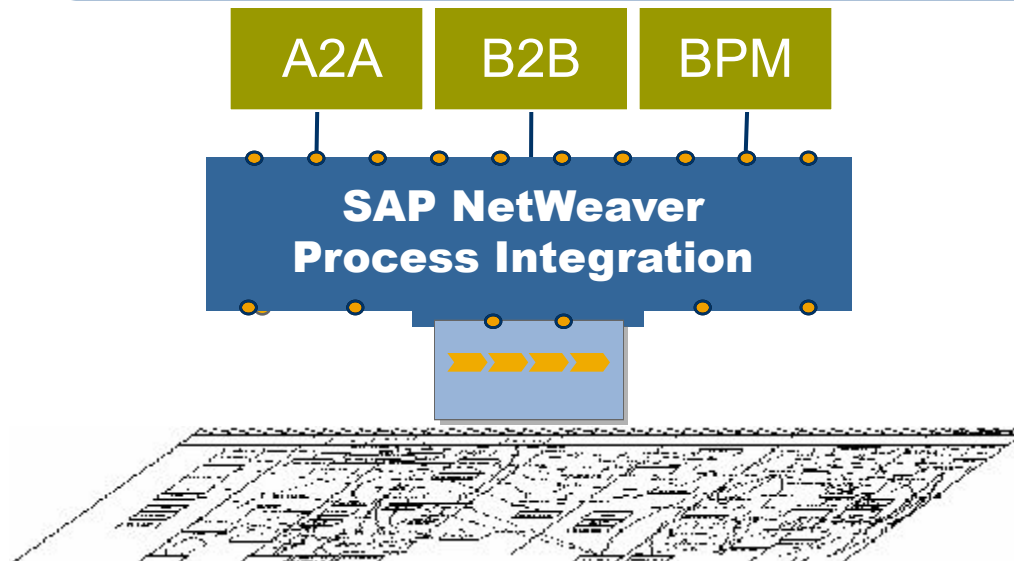
Интеграция = SAP NetWeaver

Для любых сценариев

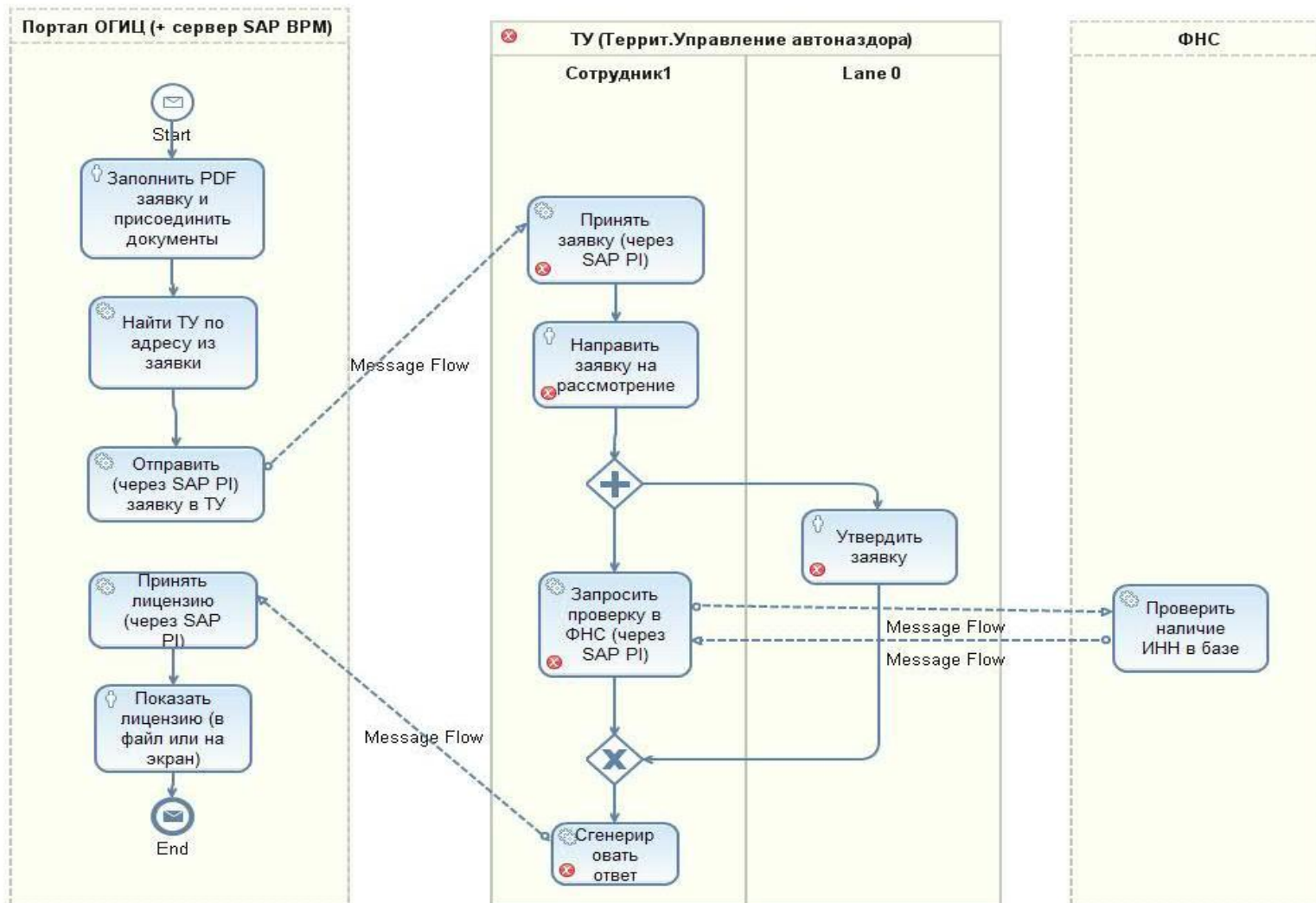
- ✓ Уменьшает стоимость поддержки
- ✓ Прозрачность процессов

Для любых систем

- ✓ Интеграция SAP & Non-SAP
- ✓ Использует открытые стандарты



Модель для исполнения на стороне ТУ (средствами SAP NetWeaver BPM)



Модель для исполнения на стороне ОГИЦ (средствами SAP NetWeaver PI)

Упорядоченные потоки данных:

- Прием данных от ОГИЦ (сервера “SAP NW BPM”)
- Передача данных в ТУ
- Передача запроса с “ИНН” в систему ФНС
- Получение ответа от ФНС
- Передача ответа в ОГИЦ (или по E-Mail клиенту)

No part of this publication may be reproduced or transmitted in any form or for any purpose without the express permission of SAP AG. The information contained herein may be changed without prior notice.

Some software products marketed by SAP AG and its distributors contain proprietary software components of other software vendors.

Microsoft, Windows, Excel, Outlook, and PowerPoint are registered trademarks of Microsoft Corporation.

IBM, DB2, DB2 Universal Database, System i, System i5, System p, System p5, System x, System z, System z10, System z9, z10, z9, iSeries, pSeries, xSeries, zSeries, eServer, z/VM, z/OS, i5/OS, S/390, OS/390, OS/400, AS/400, S/390 Parallel Enterprise Server, PowerVM, Power Architecture, POWER6+, POWER6, POWER5+, POWER5, POWER, OpenPower, PowerPC, BatchPipes, BladeCenter, System Storage, GPFS, HACMP, RETAIN, DB2 Connect, RACF, Redbooks, OS/2, Parallel Sysplex, MVS/ESA, AIX, Intelligent Miner, WebSphere, Netfinity, Tivoli and Informix are trademarks or registered trademarks of IBM Corporation.

Linux is the registered trademark of Linus Torvalds in the U.S. and other countries.

Adobe, the Adobe logo, Acrobat, PostScript, and Reader are either trademarks or registered trademarks of Adobe Systems Incorporated in the United States and/or other countries.

Oracle is a registered trademark of Oracle Corporation.

UNIX, X/Open, OSF/1, and Motif are registered trademarks of the Open Group.

Citrix, ICA, Program Neighborhood, MetaFrame, WinFrame, VideoFrame, and MultiWin are trademarks or registered trademarks of Citrix Systems, Inc.

HTML, XML, XHTML and W3C are trademarks or registered trademarks of W3C®, World Wide Web Consortium, Massachusetts Institute of Technology.

Java is a registered trademark of Sun Microsystems, Inc.

JavaScript is a registered trademark of Sun Microsystems, Inc., used under license for technology invented and implemented by Netscape.

SAP, R/3, SAP NetWeaver, Duet, PartnerEdge, ByDesign, SAP BusinessObjects Explorer, StreamWork, and other SAP products and services mentioned herein as well as their respective logos are trademarks or registered trademarks of SAP AG in Germany and other countries.

Business Objects and the Business Objects logo, BusinessObjects, Crystal Reports, Crystal Decisions, Web Intelligence, Xcelsius, and other Business Objects products and services mentioned herein as well as their respective logos are trademarks or registered trademarks of Business Objects Software Ltd. Business Objects is an SAP company.

Sybase and Adaptive Server, iAnywhere, Sybase 365, SQL Anywhere, and other Sybase products and services mentioned herein as well as their respective logos are trademarks or registered trademarks of Sybase, Inc. Sybase is an SAP company.

All other product and service names mentioned are the trademarks of their respective companies. Data contained in this document serves informational purposes only. National product specifications may vary.

The information in this document is proprietary to SAP. No part of this document may be reproduced, copied, or transmitted in any form or for any purpose without the express prior written permission of SAP AG.

This document is a preliminary version and not subject to your license agreement or any other agreement with SAP. This document contains only intended strategies, developments, and functionalities of the SAP® product and is not intended to be binding upon SAP to any particular course of business, product strategy, and/or development. Please note that this document is subject to change and may be changed by SAP at any time without notice.

SAP assumes no responsibility for errors or omissions in this document. SAP does not warrant the accuracy or completeness of the information, text, graphics, links, or other items contained within this material. This document is provided without a warranty of any kind, either express or implied, including but not limited to the implied warranties of merchantability, fitness for a particular purpose, or non-infringement.

SAP shall have no liability for damages of any kind including without limitation direct, special, indirect, or consequential damages that may result from the use of these materials. This limitation shall not apply in cases of intent or gross negligence.

The statutory liability for personal injury and defective products is not affected. SAP has no control over the information that you may access through the use of hot links contained in these materials and does not endorse your use of third-party Web pages nor provide any warranty whatsoever relating to third-party Web pages.