



Current Position

- Functionality
- Current Position** ←
- Vehicle Routes +
- Event List +
- SMS List +
- Reports +
- Vehicle Maintenance +
- Configuration
- Vehicle List +
- P.O.I. List +
- Event Config +
- User Config +

Search Vehicle

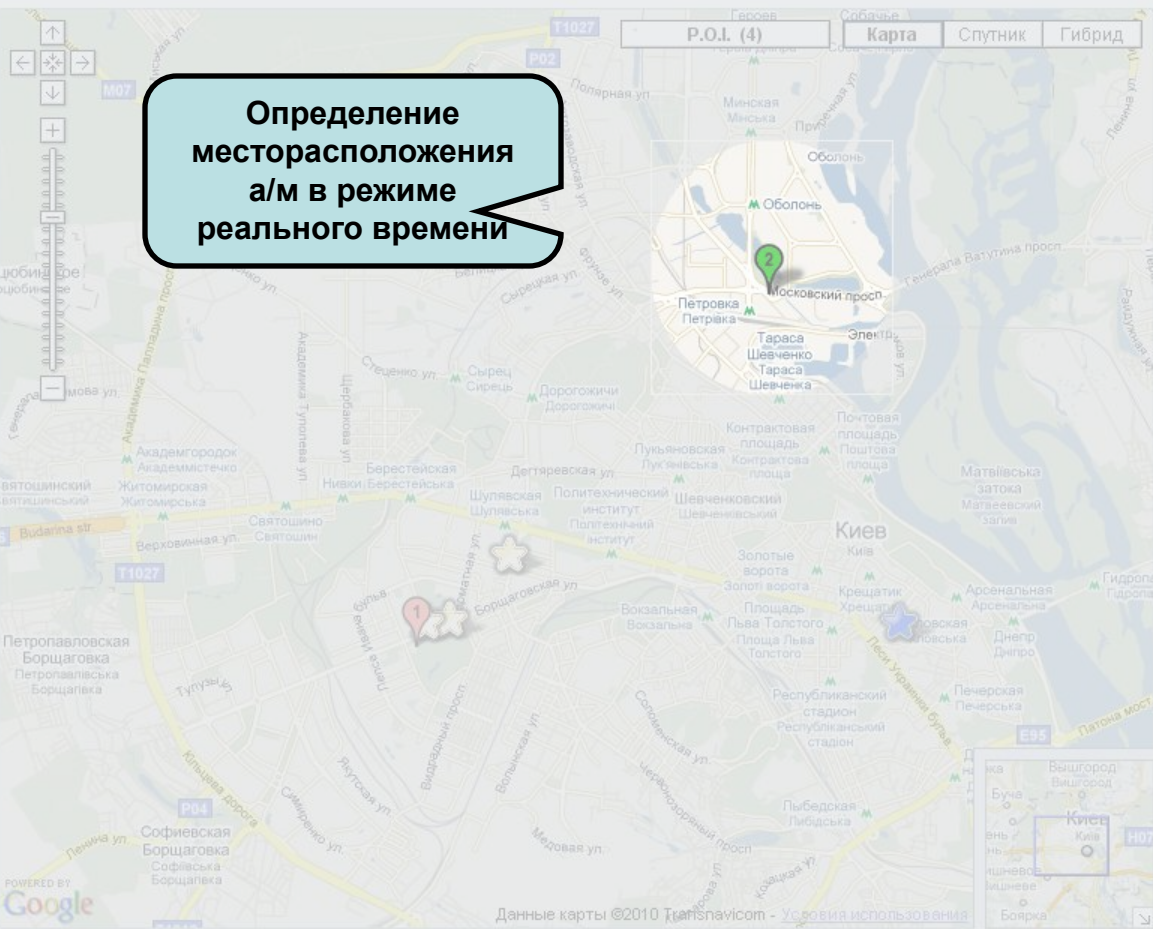
Name, plate, phone number

Search

Search Vehicles [Search Address](#) [Search by P.O.I.](#) [Full Screen](#)

Vehicle name, plate, phone driver...

Search Show All [Only vehicles with events](#)



Vehicle list

- Peugeot**
 - Plate: AA2408AI
 - State: **In Motion**
 - [Route](#) | [Events](#)¹ | [Sms](#)⁰
- Volvo**
 - Plate: AA5811BE
 - State: **Standing with engine off**
 - [Route](#) | [Events](#)⁰ | [Sms](#)⁰

Page 1 of 1

Suggestion

Click on markers to enter specific vehicle functions

Filter the P.O.I. using the P.O.I. control on the Map.

БЕЛПАРАД
 Мы дорожим вашим временем
 Авто Флит Ассистанс

Functionality

Current Position

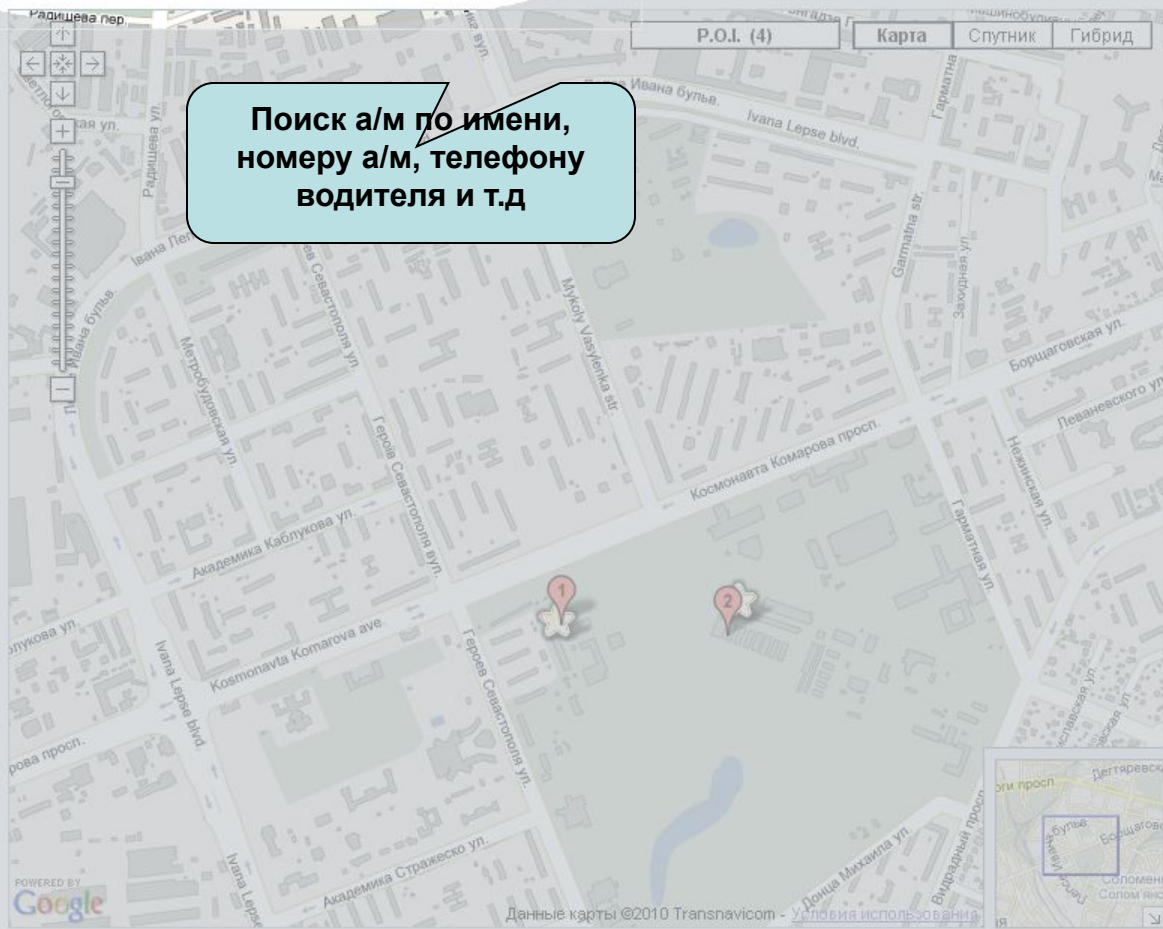
Search Vehicles [Search Address](#) [Search by P.O.I.](#) [Full Screen](#)

Vehicle name, plate, phone driver...

[Only vehicles with events](#)

- Current Position ←
- Vehicle Routes ←
- Event List ←
- SMS List ←
- Reports ←
- Vehicle Maintenance ←
- Configuration
- Vehicle List ←
- P.O.I. List ←
- Event Config ←
- User Config ←
- Search Vehicle

Поиск а/м по имени, номеру а/м, телефону водителя и т.д



Vehicle list

Peugeot ●
 Plate: AA240BAI
 State: Standing with engine off
[Route](#) | [Events](#)³ | [Sms](#)⁰

Volvo ●
 Plate: AA5811BE
 State: Standing with engine off
[Route](#) | [Events](#)² | [Sms](#)⁰

<< Page 1 of 1 >>

Suggestion

Click on markers to enter specific vehicle functions

Filter the P.O.I. using the P.O.I. control on the Map.



Current Position

- Functionality
- Current Position** ←
- Vehicle Routes ←
- Event List ←
- SMS List ←
- Reports ←
- Vehicle Maintenance ←
- Configuration
- Vehicle List ←
- P.O.I. List ←
- Event Config ←
- User Config ←

Search Vehicles [Search Address](#) [Search by P.O.I.](#) [Full Screen](#)

Vehicle name, plate, phone driver...

[Show All](#) [Only vehicles with events](#)

Peugeot (AA2408AI)

Driver Phone: +380971029084

14-05-2010 14:42: Ucraina, Kiev
4, Marshala Tymoshenko str.

In Motion to 11.0 km/h

- [Show Route](#)
- [Get route directions](#)
- [Add P.O.I. here](#)

Map controls: P.O.I. (4), Карта, Спутник, Гибрид

Нажав на а/м, Вы получаете доступ к основным функциям

Vehicle list

Peugeot

Plate: AA2408AI
State: **In Motion**

[Route](#) | [Events](#)¹ | [Sms](#)⁰

<< Page 1 of 1 >>

Suggestion

Click on markers to enter specific vehicle functions

Filter the P.O.I. using the P.O.I. control on the Map.



- Functionality
- Current Position** ←
- Vehicle Routes ←
- Event List ←
- SMS List ←
- Reports ←
- Vehicle Maintenance ←
- Configuration
- Vehicle List ←
- P.O.I.
- Event C
- User C

Current Position

Search Vehicles [Search Address](#) [Search by P.O.I.](#) [Full Screen](#)

Vehicle name, plate, phone driver...

Search [Show All](#) [Only vehicles with events](#)

Send Message to Peugeot (AA2408AI)

Driver Phone: +380971029084

Необходимо заехать к Клиенту1 и забрать документы.

Send Mess.

- [SHOW ROUTE](#)
- [Get route directions](#)
- [Add P.O.I. here](#)

Отправка текстового сообщения водителю

Vehicle list

Peugeot

Plate: AA2408AI
State: In Motion
[Route](#) | [Events](#)¹ | [Sms](#)⁰

<< Page 1 of 1 >>

Suggestion

Click on markers to enter specific vehicle functions

Filter the P.O.I. using the P.O.I. control on the Map.

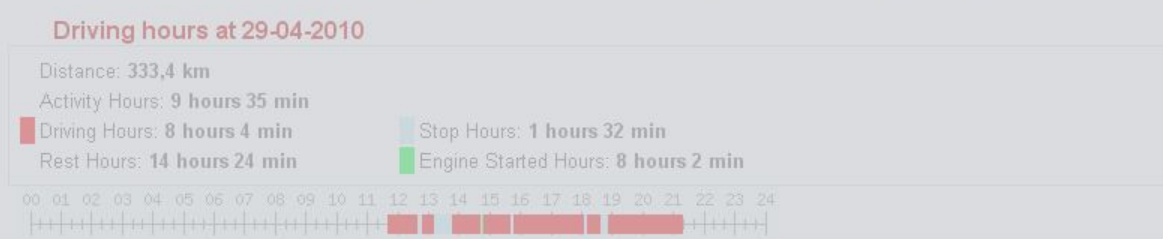
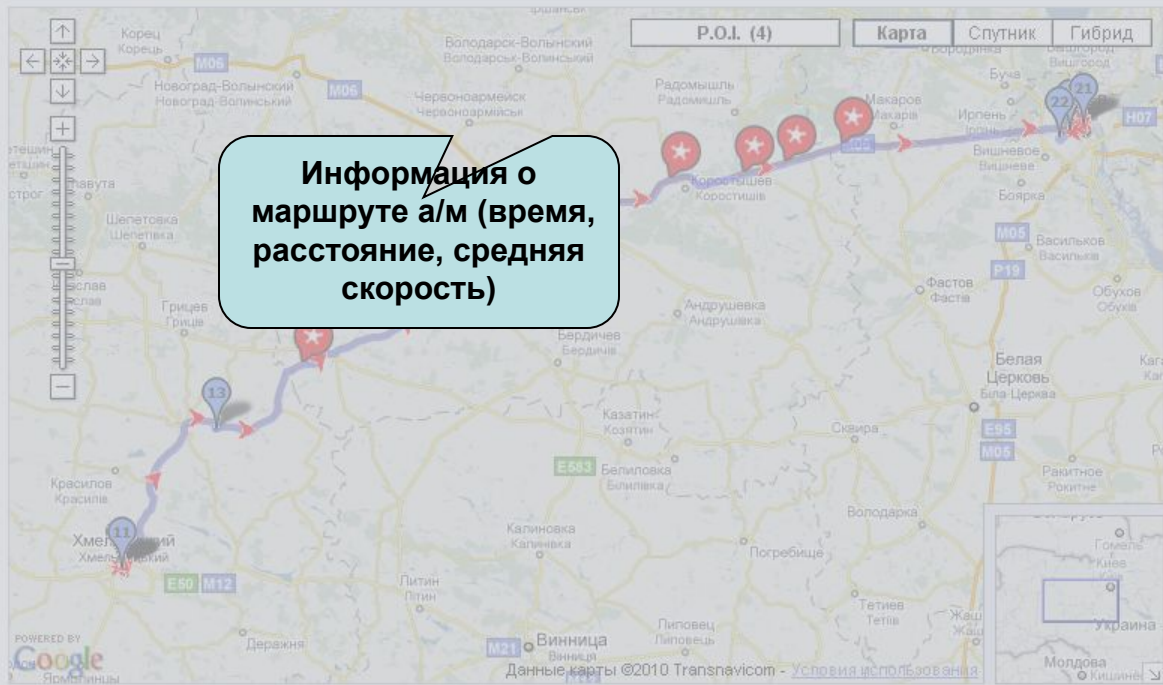


Volvo: Route

Shown: From 29-04-2010 to 29-04-2010
 Driving hours: **8 hours 4 min**
 Distance covered: **333,4 km**
 Average speed: **41,3 km/h**

- Functionality
- Current Position
- Vehicle Routes
- Event List
- SMS List
- Reports
- Vehicle Maintenance
- Configuration
- Vehicle List
- P.O.I. List
- Event Config
- User Config

Choose a Vehicle
Volvo



Vehicle Details

Volvo
 Plate: AA5811BE
 Driver Phone: +380964856775

[Messages of this vehicle](#)
[Route of this vehicle](#)
[Events of this vehicle](#)
[Events configuration](#)
[Device Status](#)

Route Details

- From 11:41 to 11:58
 Duration: 0 hours 17 min
 Dist: 1,9 km - Average: 6,8 km/h
[Show Route](#) - [Show All](#)
- From 11:58 to 12:20
 Duration: 0 hours 22 min
 Dist: 0,0 km - Average: 0,1 km/h
[Show Route](#) - [Show All](#)
- From 12:22 to 12:37
 Duration: 0 hours 15 min
 Dist: 0,0 km - Average: 0,0 km/h
[Show Route](#) - [Show All](#)
- From 12:48 to 13:10
 Duration: 0 hours 22 min
 Dist: 0,0 km - Average: 0,0 km/h
[Show Route](#) - [Show All](#)

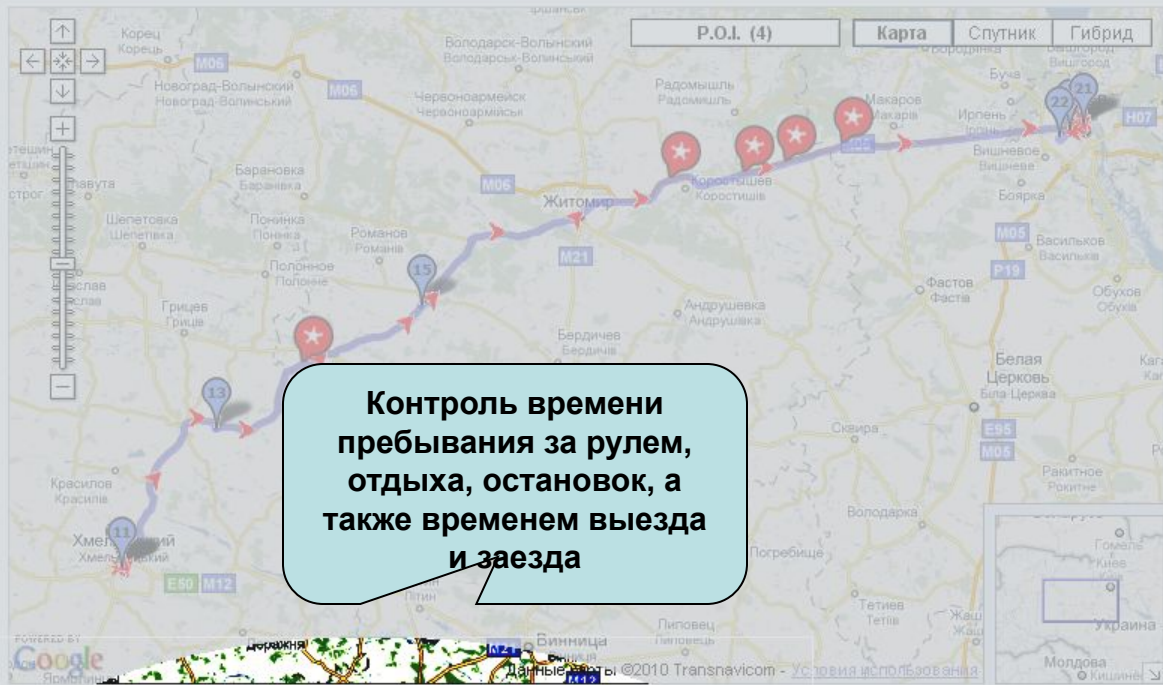
Search Data

Day:
 29-04-2010
[Multi-day search](#)

- WebFleet
- Current Position
- Vehicle Routes
- Event List
- SMS List
- Reports
- Vehicle Maintenance
- Configuration
- Vehicle List
- P.O.I. List
- Event Config
- User Config
- Choose a Vehicle
- Volvo

http://belparad.webfleet.it/app/index.php?pageName=DetailTracing&package=VehicleDetails&id=20572

Average speed: 41,3 km/h



Контроль времени пребывания за рулем, отдыха, остановок, а также временем выезда и заезда

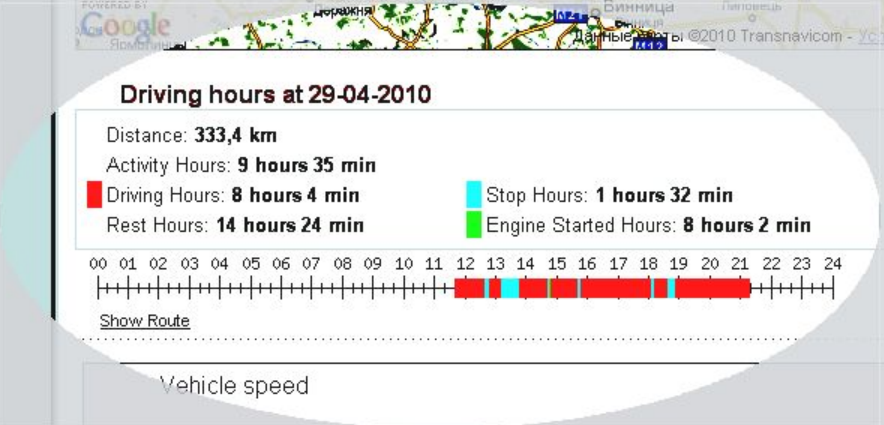


Plate: AA5811BE
Driver Phone: +380964856775

- Messages of this vehicle
- Route of this vehicle
- Events of this vehicle
- Events configuration
- Device Status

Route Details

- 1 From 11:41 to 11:58
Duration: 0 hours 17 min
Dist: 1,9 km - Average: 6,8 km/h
[Show Route](#) - [Show All](#)
- 2 From 11:58 to 12:20
Duration: 0 hours 22 min
Dist: 0,0 km - Average: 0,1 km/h
[Show Route](#) - [Show All](#)
- 3 From 12:22 to 12:37
Duration: 0 hours 15 min
Dist: 0,0 km - Average: 0,0 km/h
[Show Route](#) - [Show All](#)
- 4 From 12:48 to 13:10
Duration: 0 hours 22 min
Dist: 0,0 km - Average: 0,0 km/h
[Show Route](#) - [Show All](#)

Search Data

Day: 29-04-2010
[Multi-day search](#)



Volvo: Route

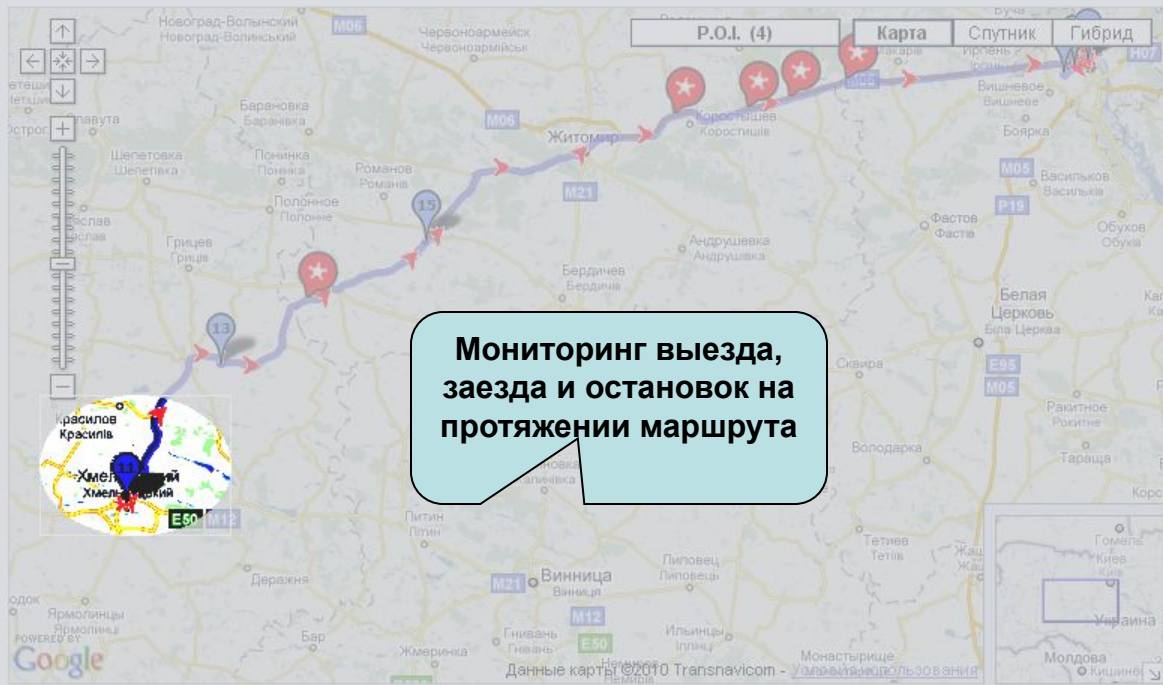
Shown: From 29-04-2010 to 29-04-2010

Driving hours: **8 hours 4 min**
Distance covered: **333,4 km**
Average speed: **41,3 km/h**

- Functionality
- Current Position
- Vehicle Routes**
- Event List
- SMS List
- Reports
- Vehicle Maintenance
- Configuration
- Vehicle List
- P.O.I. List
- Event Config
- User Config

Choose a Vehicle

Volvo



**Мониторинг выезда,
заезда и остановок на
протяжении маршрута**

Driving hours at 29-04-2010



Vehicle Details

Volvo
Plate: AA5811BE
Driver Phone: +380964856775

[Messages of this vehicle](#)
[Route of this vehicle](#)
[Events of this vehicle](#)
[Events configuration](#)
[Device Status](#)

Route Details

- From 11:41 to 11:58
Duration: 0 hours 17 min
Dist: 1,9 km - Average: 6,8 km/h
[Show Route](#) - [Show All](#)
- From 11:58 to 12:20
Duration: 0 hours 22 min
Dist: 0,0 km - Average: 0,1 km/h
[Show Route](#) - [Show All](#)
- From 12:22 to 12:37
Duration: 0 hours 15 min
Dist: 0,0 km - Average: 0,0 km/h
[Show Route](#) - [Show All](#)
- From 12:48 to 13:10
Duration: 0 hours 22 min
Dist: 0,0 km - Average: 0,0 km/h
[Show Route](#) - [Show All](#)

Search Data

Day: 29-04-2010

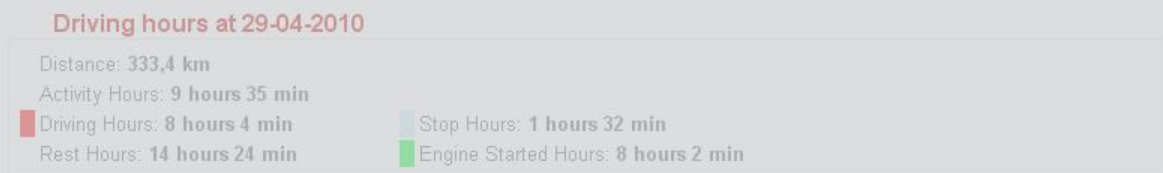
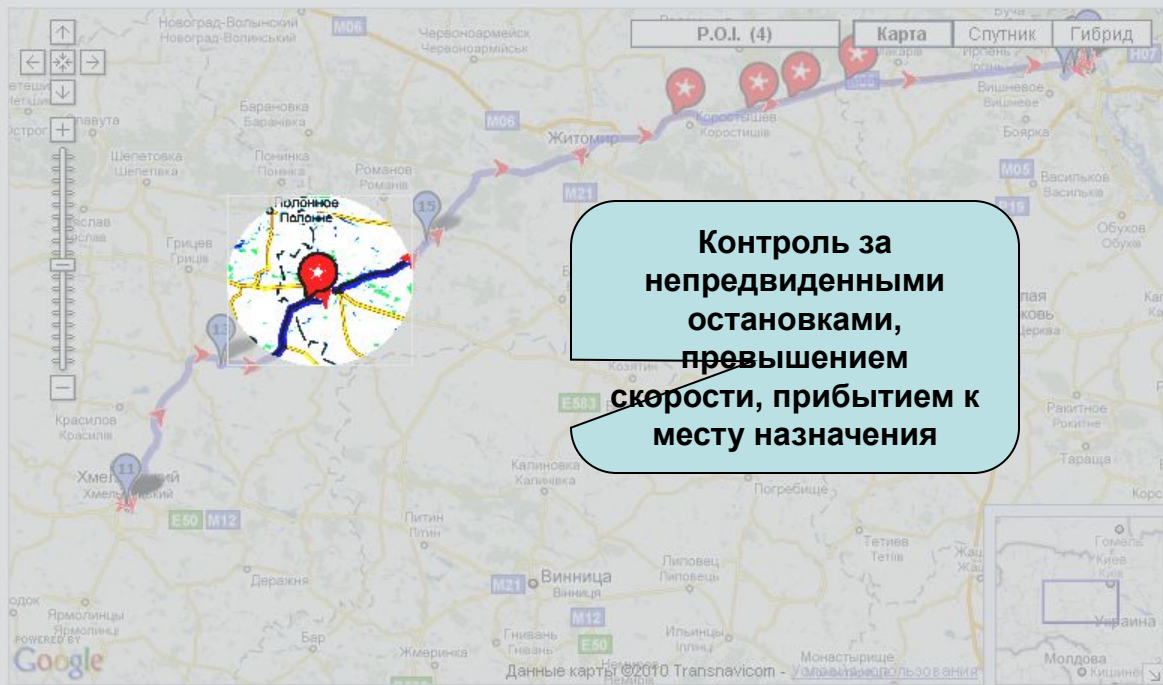
[Multi-day search](#)



Volvo: Route

Shown: From 29-04-2010 to 29-04-2010
 Driving hours: **8 hours 4 min**
 Distance covered: **333,4 km**
 Average speed: **41,3 km/h**

- Functionality
- Current Position
- Vehicle Routes**
- Event List
- SMS List
- Reports
- Vehicle Maintenance
- Configuration
- Vehicle List
- P.O.I. List
- Event Config
- User Config



Vehicle Details

Volvo
 Plate: AA5811BE
 Driver Phone: +380964856775

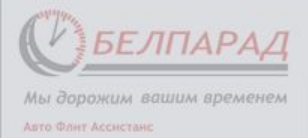
- Messages of this vehicle
- Route of this vehicle
- Events of this vehicle
- Events configuration
- Device Status

Route Details

- From 11:41 to 11:58
 Duration: 0 hours 17 min
 Dist: 1,9 km - Average: 6,8 km/h
[Show Route](#) - [Show All](#)
- From 11:58 to 12:20
 Duration: 0 hours 22 min
 Dist: 0,0 km - Average: 0,1 km/h
[Show Route](#) - [Show All](#)
- From 12:22 to 12:37
 Duration: 0 hours 15 min
 Dist: 0,0 km - Average: 0,0 km/h
[Show Route](#) - [Show All](#)
- From 12:48 to 13:10
 Duration: 0 hours 22 min
 Dist: 0,0 km - Average: 0,0 km/h
[Show Route](#) - [Show All](#)

Search Data

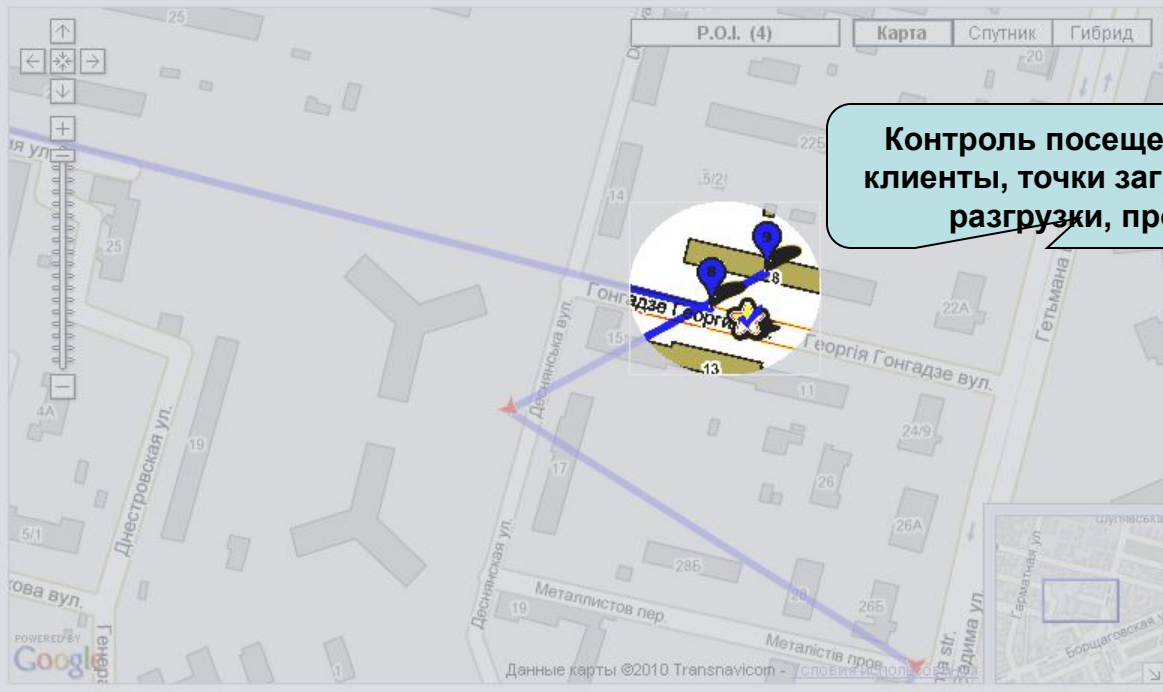
Day: 29-04-2010
[Multi-day search](#)



Volvo: Route

Shown: From 12-05-2010 to 12-05-2010
 Driving hours: **0 hours 32 min**
 Distance covered: **13,9 km**
 Average speed: **25,7 km/h**

- Functionality
- Current Position
- Vehicle Routes**
- Event List
- SMS List
- Reports
- Vehicle Maintenance
- Configuration
- Vehicle List
- P.O.I. List
- Event Config
- User Config
- Choose a Vehicle
- Volvo



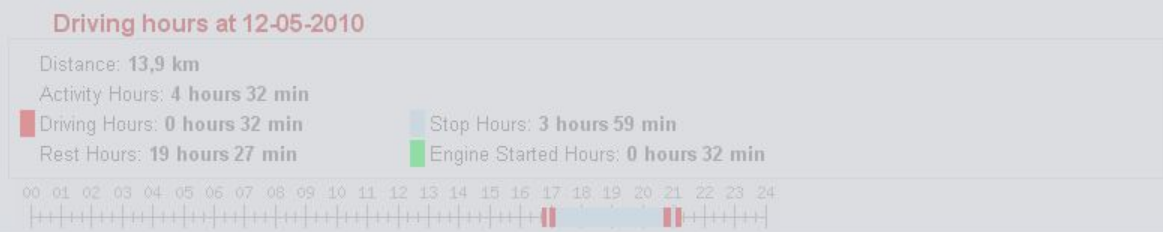
Контроль посещений POI:
 клиенты, точки загрузки или разгрузки, прочее

Vehicle Details

Volvo
 Plate: AA5811BE
 Driver Phone: +380964856775

- Messages of this vehicle
- Route of this vehicle
- Events of this vehicle
- Location

- 1 From 16:43 to 16:49
Duration: 0 hours 6 min
Dist: 1,7 km - Average: 17,0 km/h
- 2 From 16:59 to 17:08
Duration: 0 hours 9 min
Dist: 3,7 km - Average: 26,1 km/h
- 3 From 20:43 to 20:45
Duration: 0 hours 2 min
Dist: 0,3 km - Average: 8,4 km/h
- 4 From 20:46 to 20:53
Duration: 0 hours 7 min
Dist: 5,2 km - Average: 45,8 km/h



Search Data

Day: 16-05-2010
 Multi-day search



Peugeot: Event configuration

- Functionality
 - Current Position
 - Vehicle Routes
 - Event List
 - SMS List
 - Reports
 - Vehicle Maintenance
- Configuration
 - Vehicle List
 - P.O.I. List
 - Event Config**
 - User Config
- Choose a Vehicle
 - Peugeot

Add new event:

Area Event

Warning once a vehicle enters or exits a user defined area.

Polygonal Area Event

Warning once a vehicle enters or exits a user defined polygonal area.

Vehicle Stop

Warning once a vehicle has been stopped for more than a specified time period.

Antitheft

Warning when vehicle moves out of a specified time band.

Maximum Speed

Warning when vehicle exceeds a specified speed limit.

Stop near P.O.I.

Warning once a vehicle has been stopped for more than a specified time period near one of the P.O.I.s configured

Digital Input Notification

Warning when the device receives a digital input

Digital Input 1 (Cyan Cable)

Warning when the connected device is being acti

Digital Input 2 (Gray Cable)

Warning when the connected device is being acti

Engine Idling

Warning when the vehicle is been stopped with en

События : получение предупреждений и уведомлений

Stop of 15 minutes P.O.I.

Vehicle Stop for more than 15 minutes within 200 m from a specified area. an email will be sent to pavlenkop@volicable.com if event occurs.

[Delete Event](#)

Dacha_Area

Vehicle exited 2 km from a specified area. an email will be sent to pavlenkop@volicable.com if event occurs.

[Delete Event](#)

Vehicle Details

Peugeot

Plate: AA2408AI
Driver Phone: +380971029084

- [Messages of this vehicle](#)
- [Route of this vehicle](#)
- [Events of this vehicle](#)
- [Events configuration](#)
- [Device Status](#)

- Functionality
 - Current Position
 - Vehicle Routes
 - Event List
 - SMS List
 - Reports
 - Vehicle Maintenance
- Configuration
 - Vehicle List
 - P.O.I. List
 - Event Config
 - User Config
- Choose a Vehicle
 - Peugeot

Area Event

Warning once a vehicle enters or exits a user defined area.

Polygonal Area Event

Warning once a vehicle enters or exits a user defined polygonal area.

Vehicle Stop

Warning once a vehicle has been stopped for more than a specified time period.

Antitheft

Warning when vehicle moves out of a specified time band.

Maximum Speed

Warning when vehicle exceeds a specified speed limit.

Stop near P.O.I.

Warning once a vehicle has been stopped for more than a specified time period near one of the P.O.I.s configured

Digital Input Notification

Warning when the device receives a digital input

Digital Input 1 (Cyan Cable)

Warning when the device receives a digital input

Warning when the device receives a digital input

Warning when the device receives a digital input

Warning when the device receives a digital input

Warning when the device receives a digital input

Warning when the device receives a digital input

Warning when the device receives a digital input

Warning when the device receives a digital input

Warning when the device receives a digital input

Warning when the device receives a digital input

Warning when the device receives a digital input

Warning when the device receives a digital input

Warning when the device receives a digital input

Warning when the device receives a digital input

Warning when the device receives a digital input

Warning when the device receives a digital input

Warning when the device receives a digital input

Warning when the device receives a digital input

Warning when the device receives a digital input

Warning when the device receives a digital input

Warning when the device receives a digital input

Warning when the device receives a digital input

Warning when the device receives a digital input

Warning when the device receives a digital input

Warning when the device receives a digital input

Warning when the device receives a digital input

Warning when the device receives a digital input

Warning when the device receives a digital input

Warning when the device receives a digital input

Warning when the device receives a digital input

Warning when the device receives a digital input

Warning when the device receives a digital input

Warning when the device receives a digital input

Warning when the device receives a digital input

Warning when the device receives a digital input

Peugeot

Plate: AA2408AI

Driver Phone: +380971029084

[Messages of this vehicle](#)

[Route of this vehicle](#)

[Events of this vehicle](#)

[Events configuration](#)

[Device Status](#)

Уведомление о посещении клиента

Customer # 1
Vehicle entered 5 km from a specified area.
[Delete Event](#)

Stop of 90 minutes
Vehicle Stop for more than 90 minutes.
[Delete Event](#)

Vehicle movement From 20:30 To 06:00
Vehicle movement within a specified time band from 20:30 to 06:00 during days:
Monday, Tuesday, Wednesday, Thursday, Friday, Saturday, Sunday.
[Delete Event](#)

Warning on speed greater than 90 Km/h.
Warning on speed greater than 90 Km/h.
[Delete Event](#)

- Functionality
 - Current Position
 - Vehicle Routes
 - Event List
 - SMS List
 - Reports
 - Vehicle Maintenance
- Configuration
 - Vehicle List
 - P.O.I. List
 - Event Config
 - User Config
- Choose a Vehicle
 - Peugeot

- Area Event**
Warning once a vehicle enters or exits a user defined area.
- Polygonal Area Event**
Warning once a vehicle enters or exits a user defined polygonal area.
- Vehicle Stop**
Warning once a vehicle has been stopped for more than a specified time period.
- Antitheft**
Warning when vehicle moves out of a specified time band.
- Maximum Speed**
Warning when vehicle exceeds a specified speed limit.
- Stop near P.O.I.**
Warning once a vehicle has been stopped for more than a specified time period near one of the P.O.I.s configured
- Digital Input Notification**
Warning when the device receives a digital input
- Digital Input 1 (Cyan Cable)**
Warning when the connected device is being activated and deactivated
- Digital Input 2 (Gray Cable)**
Warning when the connected device is being activated and deactivated with engine on

Peugeot
Plate: AA2408AI
Driver Phone: +380971029084

[Messages of this vehicle](#)
[Route of this vehicle](#)
[Events of this vehicle](#)
[Events configuration](#)
[Device Status](#)

Предупреждение о непредвиденной остановке

Stop of 90 minutes
Vehicle Stop for more than 90 minutes.
[Delete Event](#)

- Customer # 1**
Vehicle entered 5 km from a specified area.
[Delete Event](#)
- Vehicle movement From 20:30 To 06:00**
Vehicle movement within a specified time band from 20:30 to 06:00 during days: Monday, Tuesday, Wednesday, Thursday, Friday, Saturday, Sunday.
[Delete Event](#)
- Warning on speed greater than 90 Km/h.**
Warning on speed greater than 90 Km/h.
[Delete Event](#)

- Functionality
 - Current Position
 - Vehicle Routes
 - Event List
 - SMS List
 - Reports
 - Vehicle Maintenance
- Configuration
 - Vehicle List
 - P.O.I. List
 - Event Config
 - User Config
- Choose a Vehicle
 - Peugeot

Area Event

Warning once a vehicle enters or exits a user defined area.

Polygonal Area Event

Warning once a vehicle enters or exits a user defined polygonal area.

Vehicle Stop

Warning once a vehicle has been stopped for more than a specified time period.

Antitheft

Warning when vehicle moves out of a specified time band.

Maximum Speed

Warning when vehicle exceeds a specified speed limit.

Stop near P.O.I.

Warning once a vehicle has been stopped for more than a specified time period near one of the P.O.I.s configured

Digital Input Notification

Warning when the device receives a digital input

Digital Input 1 (Cyan Cable)

Warning when the connected device is being activated and deactivated

Digital Input 2 (Gray Cable)

Warning when the connected device is being activated and deactivated

Engine Idling

Warning when the vehicle is been stopped with engine on

Peugeot

Plate: AA2408AI
Driver Phone: +380971029084

- [Messages of this vehicle](#)
- [Route of this vehicle](#)
- [Events of this vehicle](#)
- [Events configuration](#)
- [Device Status](#)

Предупреждение об использовании а/м в неустановленное время

Customer # 1

Vehicle entered 5 km from a specified area.

[Delete Event](#)

Stop of 90 minutes

Vehicle Stop for more than 90 minutes.

[Delete Event](#)

Vehicle movement From 20:30 To 06:00

Vehicle movement within a specified time band from 20:30 to 06:00 during days: Monday, Tuesday, Wednesday, Thursday, Friday, Saturday, Sunday.

[Delete Event](#)

Warning on speed greater than 90 Km/h.

Warning on speed greater than 90 Km/h.

[Delete Event](#)

- Functionality
 - Current Position
 - Vehicle Routes
 - Event List
 - SMS List
 - Reports
 - Vehicle Maintenance
- Configuration
 - Vehicle List
 - P.O.I. List
 - Event Config
 - User Config
- Choose a Vehicle
 - Peugeot

Area Event

Warning once a vehicle enters or exits a user defined area.

Polygonal Area Event

Warning once a vehicle enters or exits a user defined polygonal area.

Vehicle Stop

Warning once a vehicle has been stopped for more than a specified time period.

Antitheft

Warning when vehicle moves out of a specified time band.

Maximum Speed

Warning when vehicle exceeds a specified speed limit.

Stop near P.O.I.

Warning once a vehicle has been stopped for more than a specified time period near one of the P.O.I.s configured

Digital Input Notification

Warning when the device receives a digital input

Digital Input 1 (Cyan Cable)

Warning when the connected device is being activated and deactivated

Digital Input 2 (Gray Cable)

Warning when the connected device is being activated and deactivated

Engine Idling

Warning when the vehicle is been stopped with engine on

Peugeot

Plate: AA2408AI

Driver Phone: +380971029084

[Messages of this vehicle](#)

[Route of this vehicle](#)

[Events of this vehicle](#)

[Events configuration](#)

[Device Status](#)

Customer # 1

Vehicle entered 5 km from a spe

[Delete Event](#)

Stop of 90 minutes

Vehicle Stop for more than 90 m

[Delete Event](#)

Vehicle movement From 20:30 To 06:00

Vehicle movement within a specified time band from 20:30 to 06:00 during days:

Monday, Tuesday, Wednesday, Thursday, Friday, Saturday, Sunday.

[Delete Event](#)

Warning on speed greater than 90 Km/h.

Warning on speed greater than 90 Km/h.

[Delete Event](#)

Уведомление о превышении установленного лимита скорости

Warning on speed greater than 90 Km/h.

- Vehicle Routes
- Event List
- SMS List
- Reports
- Vehicle Maintenance
- Configuration
 - Vehicle List
 - P.O.I. List
 - Event Config
 - User Config
- Choose a Vehicle
 - Peugeot

Warning once a vehicle enters or exits a user defined polygonal area.

Vehicle Stop
Warning once a vehicle has been stopped for more than a specified time period.

Antitheft
Warning when vehicle moves out of a specified time band.

Maximum Speed
Warning when vehicle exceeds a specified speed limit.

Stop near P.O.I.
Warning once a vehicle has been stopped for more than a specified time period near one of the P.O.I.s configured

Digital Input Notification
Warning when the device receives a digital input

Digital Input 1 (Cyan Cable)
Warning when the connected device is being activated and deactivated

Digital Input 2 (Gray Cable)
Warning when the connected device is being activated and deactivated

Engine Idling
Warning when the vehicle is been stopped with engine on

- Messages of this vehicle
- Route of this vehicle
- Events of this vehicle
- Events configuration
- Device Status

- Customer # 1**
Vehicle entered 5 km from a specified area.
[Delete Event](#)
- Stop of 90 minutes**
Vehicle Stop for more than 90 minutes.
[Delete Event](#)
- Vehicle movement From 20:30**
Vehicle movement within a specified time
Monday, Tuesday, Wednesday, Thursday, Friday
[Delete Event](#)
- Warning on speed greater than 90 Km/h.**
Warning on speed greater than 90 Km/h.
[Delete Event](#)
- Stop with engine idle of 15 minutes**
Warning if the vehicle will be stopped with engine idle for at least 15 minutes.
[Delete Event](#)

Уведомление о работе двигателя в «холостом» режиме

Stop with engine idle of 15 minutes

Vehicle Maintenance +

Configuration

Vehicle List +

P.O.I. List +

Event Config ←

User Config +

Choose a Vehicle
Peugeot ▾

Maximum Speed

Warning when vehicle exceeds a specified speed limit.

Stop near P.O.I.

Warning once a vehicle has been stopped for more than a specified time period near one of the P.O.I.s configured

Digital Input Notification

Warning when the device receives a digital input

Digital Input 1 (Cyan Cable)

Warning when the connected device is being activated

Digital Input 2 (Gray Cable)

Warning when the connected device is being activated and deactivated

Engine Idling

Warning when the vehicle is been stopped with engine on

Отправка уведомлений на мобильный телефон или по электронной почте

- Send an SMS to:
- Send an Email to:
(Multiple email addresses must be comma separated)

Add Event

Customer # 1

Vehicle entered 5 km from a specified area.

[Delete Event](#)

Stop of 90 minutes

Vehicle Stop for more than 90 minutes.

[Delete Event](#)

Vehicle movement From 20:30 To 06:00

Vehicle movement within a specified time band from 20:30 to 06:00 during days:

Monday, Tuesday, Wednesday, Thursday, Friday, Saturday, Sunday.

[Delete Event](#)

Warning on speed greater than 90 Km/h.

Warning on speed greater than 90 Km/h.

[Delete Event](#)

Stop with engine idle of 15 minutes

Warning if the vehicle will be stopped with engine idle for at least 15 minutes.

[Delete Event](#)

Point of Interest list (P.O.I.)

Welcome pavlenkop@voliacable.com English

- Functionality
- Current Position
- Vehicle Routes
- Event List
- SMS List
- Reports
- Vehicle Maintenance
- Configuration
- Vehicle List
- P.O.I. List**
- Event Config
- User Config

Add P.O.I.

[Export to Excel](#)

Select a point on the map:



**Определение точек
особого интереса
(клиенты, поставщики,
АЗС, СТО, партнеры)**

P.O.I. Name:
 Not generate events within meters from selected area
 P.O.I. Category:

- Select...
- Suppliers
- Customers**
- Home

Search

Name...

[Show All](#)

Add category

STEP1: Category's Name

STEP2: Markers Color

[Manage Categories](#)

Suggestion

In order to edit P.O.I. parameters, click on the pencil icon close to the string you want to modify

Suggestion

To add a new P.O.I. category you can use the form 'Add category'. To change an existing P.O.I. category you can click 'Manage Categories'.

Garag

Latitude: 50.4374258
 Longitude: 30.4268147
 P.O.I. Category: None
 Address: 1?10, ?????????? ?????????? ??????, Kiev, Ucraina
 Not generate events nearby: No
[Show P.O.I.](#) | [Delete P.O.I.](#)

Dacha



Reports

Route Reports Report P.O.I.

General Route Report

[Filter View](#) | [Export table in Excel format](#)

From Date: 09-05-2010
 To Date: 15-05-2010
 Vehicles: Peugeot, Volvo
 Report Type: Daily Report, Detailed Report, Synthetical Report
 Update Report

Общий посуточный отчет по всему парку

[Show results on map](#)

Date	Vehicle	Start time	End time	Activity Hours	Driving Hours	Stop Hours	Rest Hours	Engine Started Hours	Distance covered
10-05-2010	Volvo	18:39	21:57	03:18	00:30	02:48	20:41	00:29	19.14 Km
10-05-2010	Peugeot	12:47	19:38	06:51	01:04	05:46	17:08	01:04	39.28 Km
11-05-2010	Peugeot	13:45	19:56	06:10	01:42	04:29	17:49	01:41	33.14 Km
12-05-2010	Volvo	16:43	21:15	04:32	00:32	03:59	19:27	00:32	13.95 Km
13-05-2010	Peugeot	13:08	20:46	07:38	02:27	05:11	16:21	02:27	52.76 Km
14-05-2010	Peugeot	14:18	19:18	04:59	01:22	03:37	19:00	01:22	38.40 Km
15-05-2010	Volvo	18:53	21:58	03:04	00:47	02:17	20:55	00:47	9.63 Km
15-05-2010	Peugeot	12:24	21:39	09:15	01:30	07:44	14:44	01:30	40.55 Km
TOTALS:				45:47	09:54	35:51	146:05	09:52	246.85 Km

- Functionality
- Current Position
- Vehicle Routes
- Event List
- SMS List
- Reports**
- Vehicle Maintenance
- Configuration
- Vehicle List
- P.O.I. List
- Event Config
- User Config
- Search Vehicle



Reports

Route Reports Report P.O.I.

General Route Report

[Filter View](#) | [Export table in Excel format](#)

From Date: 09-05-2010
 To Date: 15-05-2010
 Vehicles: Peugeot, Volvo
 Report Type: Daily Report, Detailed Report, Synthetical Report
 Update Report

Экспорт всех отчетов в EXEL

[Show results on map](#)

Date	Vehicle	Activity Hours	Driving Hours	Stop Hours	Rest Hours	Engine Started Hours	Distance covered
09-05-2010 / 15-05-2010	Volvo	10:54	01:49	09:04	61:03	01:48	42.72 Km
09-05-2010 / 15-05-2010	Peugeot	34:53	08:05	26:47	85:02	08:04	204.13 Km
TOTALS:		45:47	09:54	35:51	146:05	09:52	246.85 Km

- Functionality
- Current Position
- Vehicle Routes
- Event List
- SMS List
- Reports**
- Vehicle Maintenance
- Configuration
- Vehicle List
- P.O.I. List
- Event Config
- User Config
- Search Vehicle



Reports

Route Reports **Report P.O.I.**

Report P.O.I.

[Filter View](#) | [Export table in Excel format](#)

From Date:

To Date:

Vehicles:

P.O.I. Name:

Детальный отчет по всем посещениям P.O.I.

Date	Vehicle	hours	minutes	P.O.I. Visited
15-05-2010	Peugeot	0	28	Home
15-05-2010	Volvo	2	8	Parents home
15-05-2010	Peugeot	6	15	Dacha
15-05-2010	Volvo	69	38	Home
15-05-2010	Peugeot	17	10	Garag
14-05-2010	Peugeot	18	21	Garag
13-05-2010	Peugeot	0	58	Home
13-05-2010	Peugeot	41	13	Garag
12-05-2010	Volvo	0	17	Parents home
12-05-2010	Volvo	3	40	Home
12-05-2010	Volvo	42	45	Home
11-05-2010	Peugeot	1	11	Garag
11-05-2010	Peugeot	1	21	Home
11-05-2010	Peugeot	18	11	Garag
10-05-2010	Volvo	45	2	Home
10-05-2010	Peugeot	4	57	Dacha
10-05-2010	Peugeot	41	52	Garag
TOTALS:		315 hours	27 minutes	

- Functionality
- Current Position
- Vehicle Routes
- Event List
- SMS List
- Reports**
- Vehicle Maintenance
- Configuration
- Vehicle List
- P.O.I. List**
- Event Config
- User Config
- Search Vehicle
- Name, plate, phone number...
- Search



User Config

Search Search
[Show All](#) [Delete expired users](#)

Add User
Email address:
Password:

pavlenkop@voliacable.com
 Vehicle Assigned: All vehicles
 Valid on: Always valid
 Default Language: English
 User type: Account: Main
[Change password](#) | [Change TimeZone](#)

anna@briteam.com
 Vehicle Assigned: 0 Vehicles
 Valid on: Always valid
 Default Language: English
 User type: Account: Secondary
 Grant access to: Position Route Device Statuses Events SMS List Reports Vehicle Maintenance Vehicle list
 Poi List Event configuration
[Change password](#) | [Delete](#) | [Assign vehicles](#) | [Change validity period](#) | [Send a notification email](#)

lovsyanko@selena-ukraine.com.ua
 Vehicle Assigned: 0 Vehicles
 Valid on: Always valid
 Default Language: English
 User type: Account: ...
 Grant access to: Po... Po...
[Change password](#) | [Delete](#) | [Ass...](#)

- Functionality
- Current Position
- Vehicle Routes
- Event List
- SMS List
- Reports
- Vehicle Maintenance
- Configuration
- Vehicle List
- P.O.I. List
- Event Config
- User Config**
- Search Vehicle

У Вас есть возможность предоставления доступа своим клиентам, подразделениям, удаленным филиалам и т.д. Права доступа назначаются Вами.

Спасибо за внимание!