



Features OLAP ModelKit

OLAP ModelKit

is a powerful and high-performance OLAP component specially designed to help you reduce your development time and costs while building effective decision support systems.


Data Sources

Supports all .NET data sources


 → IEnumerable

 → ICustomTypeDescriptor

 → IList

 → IList

 → IListSource

 → Custom objects

Data Processing

- **Powerful Wizard for cubes creation is available both at design-time and runtime**
- **Powerful expression language and a convenient expression editor**
 - Create cross reports of any complexity depending on the data-source information.
 - Group any data by a range of values using the special functions provided within the expression language
- **High Data Processing Speed**
- **Allows saving all parameters in XML file**

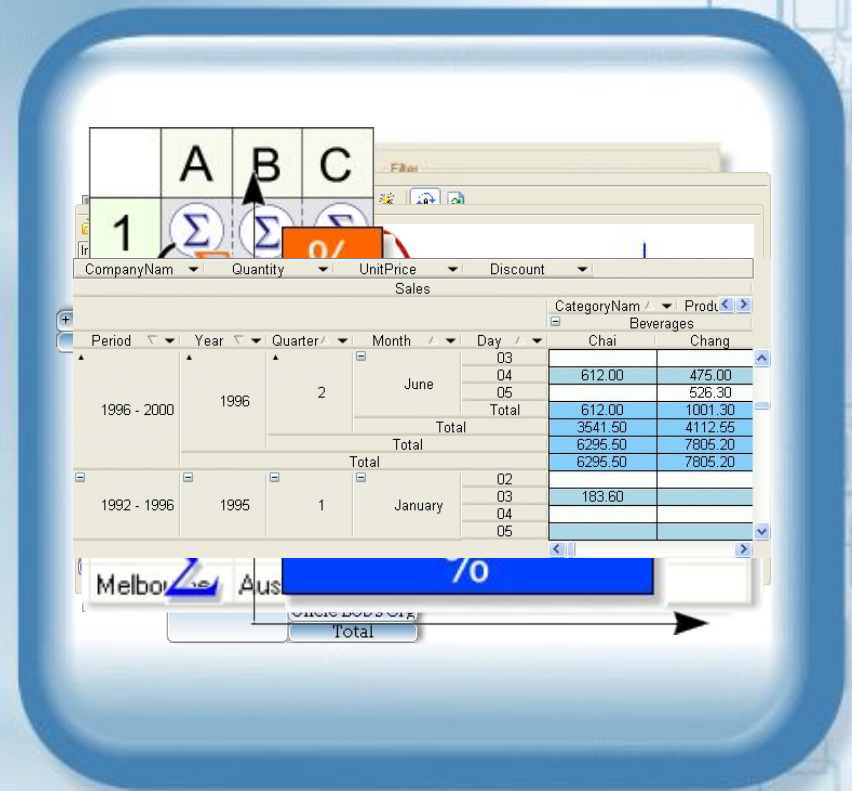


Data Processing

Various manipulations with data:

- Dynamic data sorting and filtering by assigned or arbitrary conditions
- Interactive grouping of values
- Drilling down, rolling up
- Dimensional pivoting
- Creation of ranged dimensions, etc
- Source data editing
- Graphic and percentage data output

It is possible to create unlimited number of dimensions



Data Processing

Various aggregate functions:

- Minimum, maximum, and average values
- Standard deviation and estimate of standard deviation
- Variance and estimate of variance
- Median
- Skewness
- Kurtosis

Custom aggregate functions, etc

	A	B	C
1	Σ	Σ	Σ
2	Σ	Σ	Σ
3	Σ	Σ	Σ

sum *avg*
max
min

Data Visualization

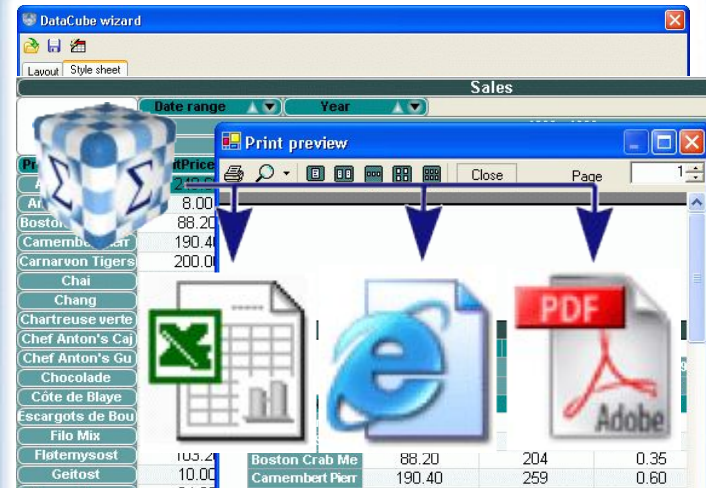
Supports the following appearance styles:

- XP
- Office
- Smooth
- Professional
- Custom Styles

Inactive fields						
Sales						
			Country /	City /		
			USA			
			Total	Total		
Categ /	ProductNa /	Qu	Su	Unit	Qu	Su
Seafood	Ikura			979,60	742	1,6%
	Inlagd Sill			554,80	805	1,1%
	Jack's New En	981	0,7%	432,10	981	0,7%
	Konbu			230,40	891	0,4%
	Nord-Ost Matje			776,58	612	1,1%
	Röd Kaviar			201,00	293	0,3%
	Røgede sild			129,20	508	0,3%
	Spegesild			300,00	548	0,5%
Total		2084	2,1%	6290,78	7681	10,5%
Total		6828	9,5%	56500,	51317	100,0%

Data Visualization

- Appearance properties including styles can be changed both at design-time and at runtime
- Ability to present data with the help of any third-party components, especially chart components. Full compatibility with the Chart ModelKit
- Preview and print ability at any time
- Interactive grid for preview with drag-and-drop support
- Export to
 - HTML
 - Excel
 - PDF



General

- Contains only 100% .NET managed code. Compatible with VS 2003/2005 and .NET Framework 1.1/2.0
- Full source code in C# and unit tests
- Easy to localize
- Royalty-free run-time
- Flexible licensing and affordable pricing
- Qualified free technical support
- Fully functional trial version is available



Create feature-rich decision support systems with the OLAP ModelKit!

