



ПРИМЕНЕНИЕ ГИС ТЕХНОЛОГИЙ В SIWARE

**Беспрозванных А.В.
Зав. лабораторией комплексной
автоматизации**

Реализованные технологии на базе C*i*Ware

- *система управления климатическими данными для организаций Росгидромета;*
- *система сбора, обработки, представления оперативных данных;*
- *система обслуживания внешних потребителей оперативными данными;*
- *система ведения каталога сетевых подразделений Росгидромета;*
- *формирование архивов оперативной информации по метеорологии, океанографии, судовой метеорологии, климату и аэрологии;*
- *формирование бюллетеня температурного режима.*

Система внедрена в 22 организациях.

Перечень стандартов используемых в ГИС технологиях CliWare

- Web Coverage Service (WCS);
- Web Feature Service (WFS);
- Web Map Service (WMS);
- Catalogue Service (CSW).

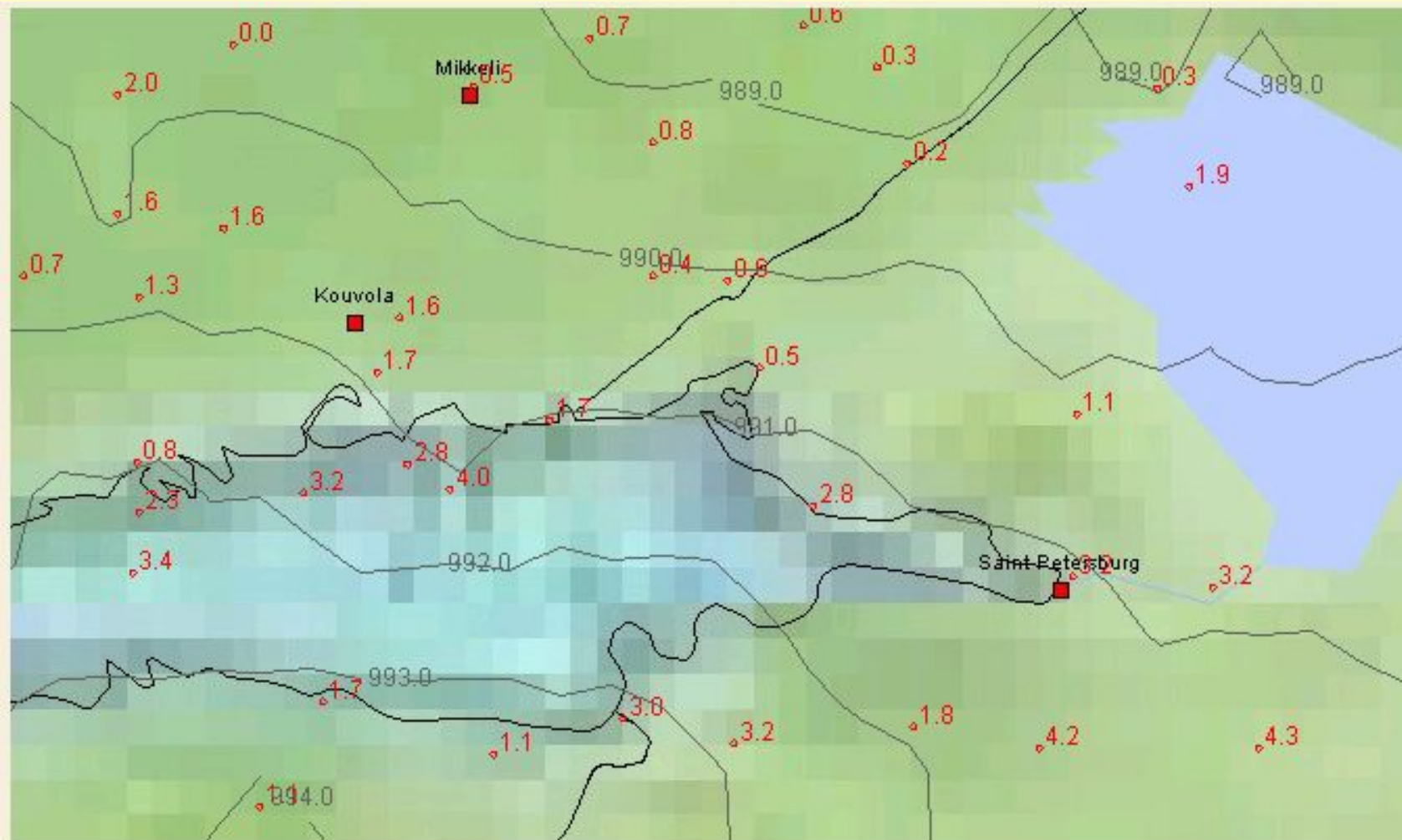
Web Coverage Service (WCS)



Web Feature Service (WFS); GML документ

- ▣ `<gml:featureMember>`
- ▣ `<cr:gis_vol9a fid="gis_vol9a.29570.0">`
- ▣ `<cr:regionid>2</cr:regionid>`
- ▣ `<cr:regionname>ASIA</cr:regionname>`
- ▣ `<cr:countryarea>RUSSIAN FEDERATION (IN ASIA)</cr:countryarea>`
- ▣ `<cr:countrycode>2010</cr:countrycode>`
- ▣ `<cr:stationid>1340</cr:stationid>`
- ▣ `<cr:indexnbr>29570</cr:indexnbr>`
- ▣ `<cr:indexsubnbr>0</cr:indexsubnbr>`
- ▣ `<cr:station_nm>KRASNOJARSK OPYTNOE POLE</cr:station_nm>`
- ▣ `<cr:lat>56.30</cr:lat>`
- ▣ `<cr:lon>92.75</cr:lon>`
- ▣ `<cr:hp>276</cr:hp>`
- ▣ `<cr:geom>`
- ▣ `<gml:Point srsName="http://www.opengis.net/gml/srs/epsg.xml#4326">`
- ▣ `<gml:coordinates xmlns:gml="http://www.opengis.net/gml" decimal="." cs="," ts="">`
- ▣ `92.75,56.3`
- ▣ `</gml:coordinates>`
- ▣ `</gml:Point>`
- ▣ `</cr:geom>`
- ▣ `</cr:gis_vol9a>`
- ▣ `</gml:featureMember>`

Карта, сформированная службой WMS



Поиск метаданных с использованием стандартов CSW

Portal DCPC, Obninsk
Data and Products Collection Centre,
WMO Information System (Russian Segment)

Home | Registration | Metadata | Data | Administration | Documents

▼ Metadata | ▼ Language | Help | Logout

Simple search page

Simple search

Free text:

Coordinates:

Region:

Карта | Спутник

Данные карты ©2011 Geocentre Consulting, Tele Atlas - Условия использования

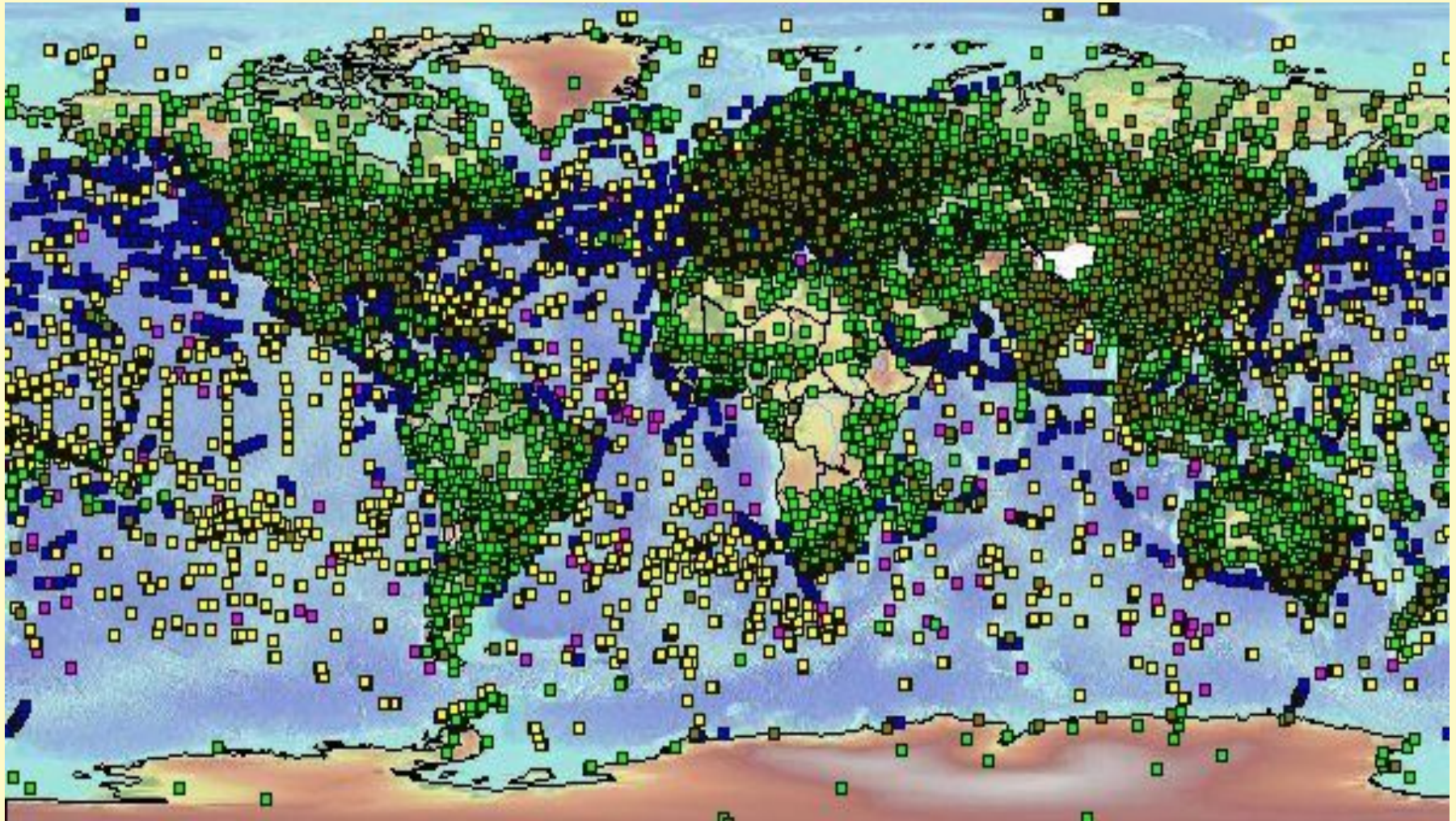
Metadata

<input type="checkbox"/>	Title	CreateDate	ChangeDate	Category	Acti
<input type="checkbox"/>	SMRS20 collection of SYNOP reports available from RUMS (MOSCOW) at 00, 06, 12 and 18 UTC	2011-10-13 13:15	2011-10-13 13:15	series	
<input type="checkbox"/>	SMRS17 collection of SYNOP reports available from RUMS (MOSCOW) at 00, 06, 12 and 18 UTC	2011-10-13 13:15	2011-10-13 13:15	series	
<input type="checkbox"/>	SMRS16 collection of SYNOP reports available from RUMS (MOSCOW) at 00, 06, 12 and 18 UTC	2011-10-13 13:15	2011-10-13 13:15	series	
<input type="checkbox"/>	SMRS15 collection of SYNOP reports available from RUMS (MOSCOW) at 00, 06, 12 and 18 UTC	2011-10-13 13:15	2011-10-13 13:15	series	
<input type="checkbox"/>	SMRS14 collection of SYNOP reports available from RUMS (MOSCOW) at 00, 06, 12 and 18 UTC	2011-10-13 13:16	2011-10-13 13:16	series	

Перечень пакетов, используемых CliWare

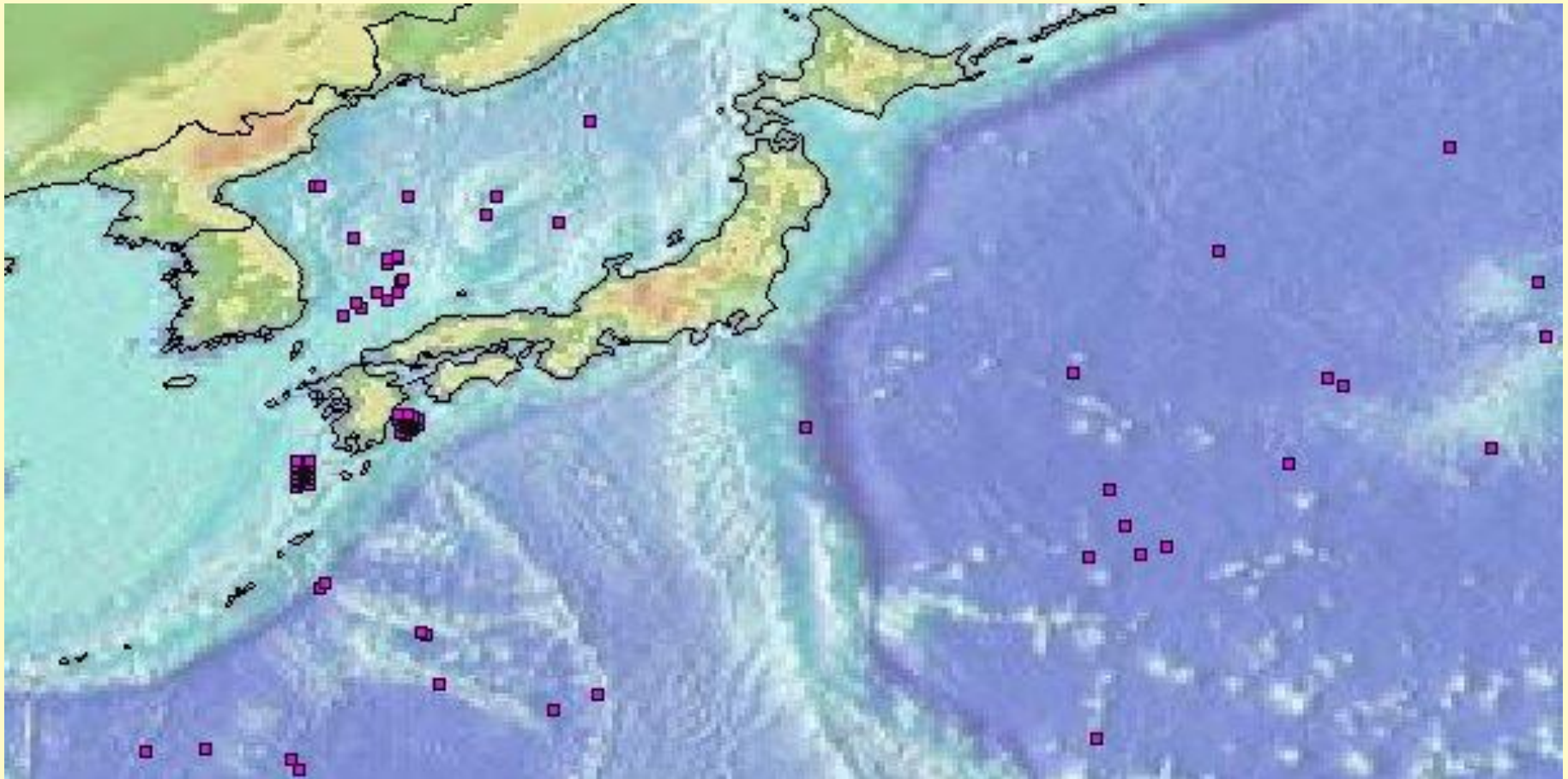
- Deegree (Open Source)
- Geoserver (Open Source)
- GeoNetwork (Open Source)
- Bentley – планируется

Пакет deegree. Сбор данных за сутки



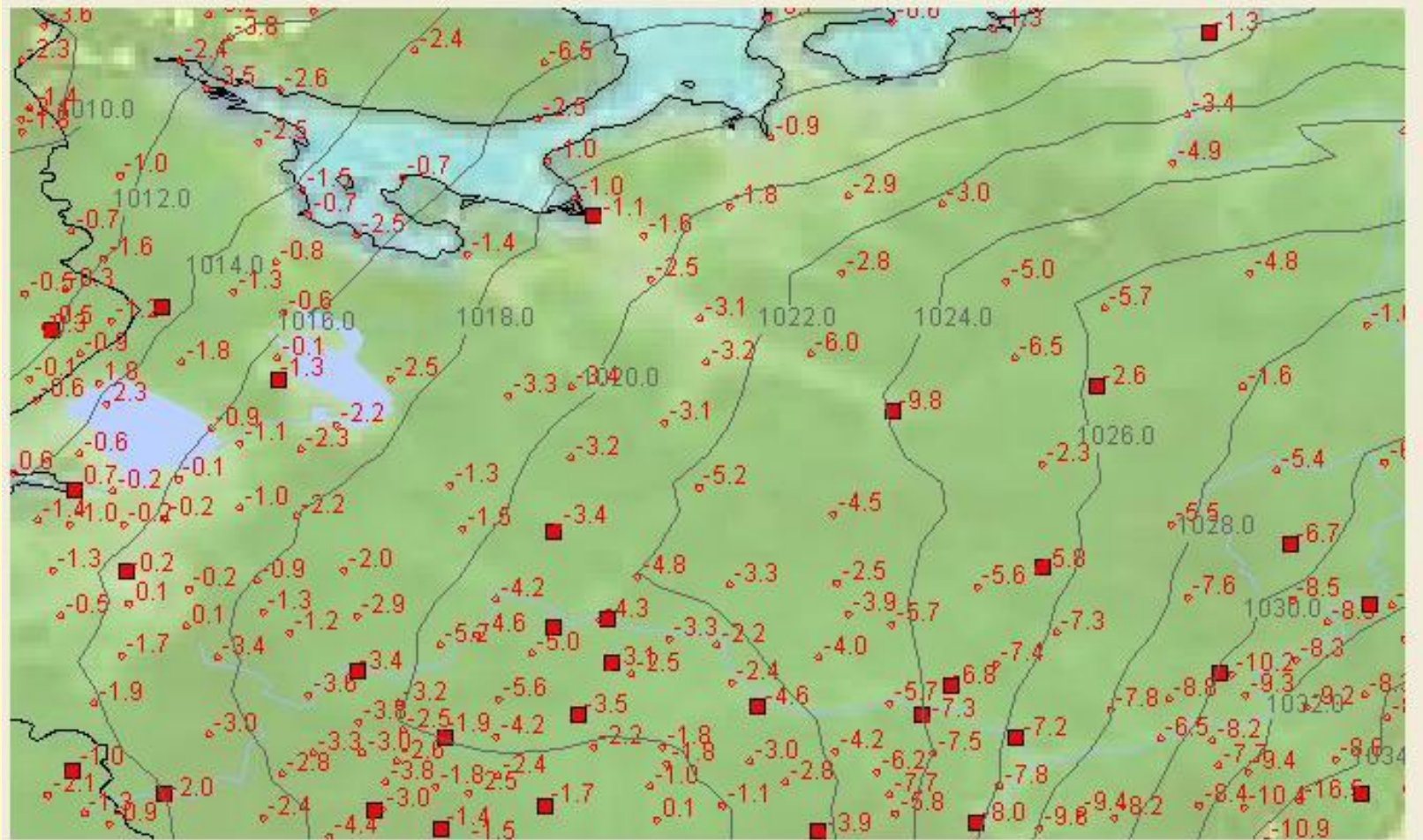
Пакет deegree.

Карта глубоководных наблюдений в Тихом океане



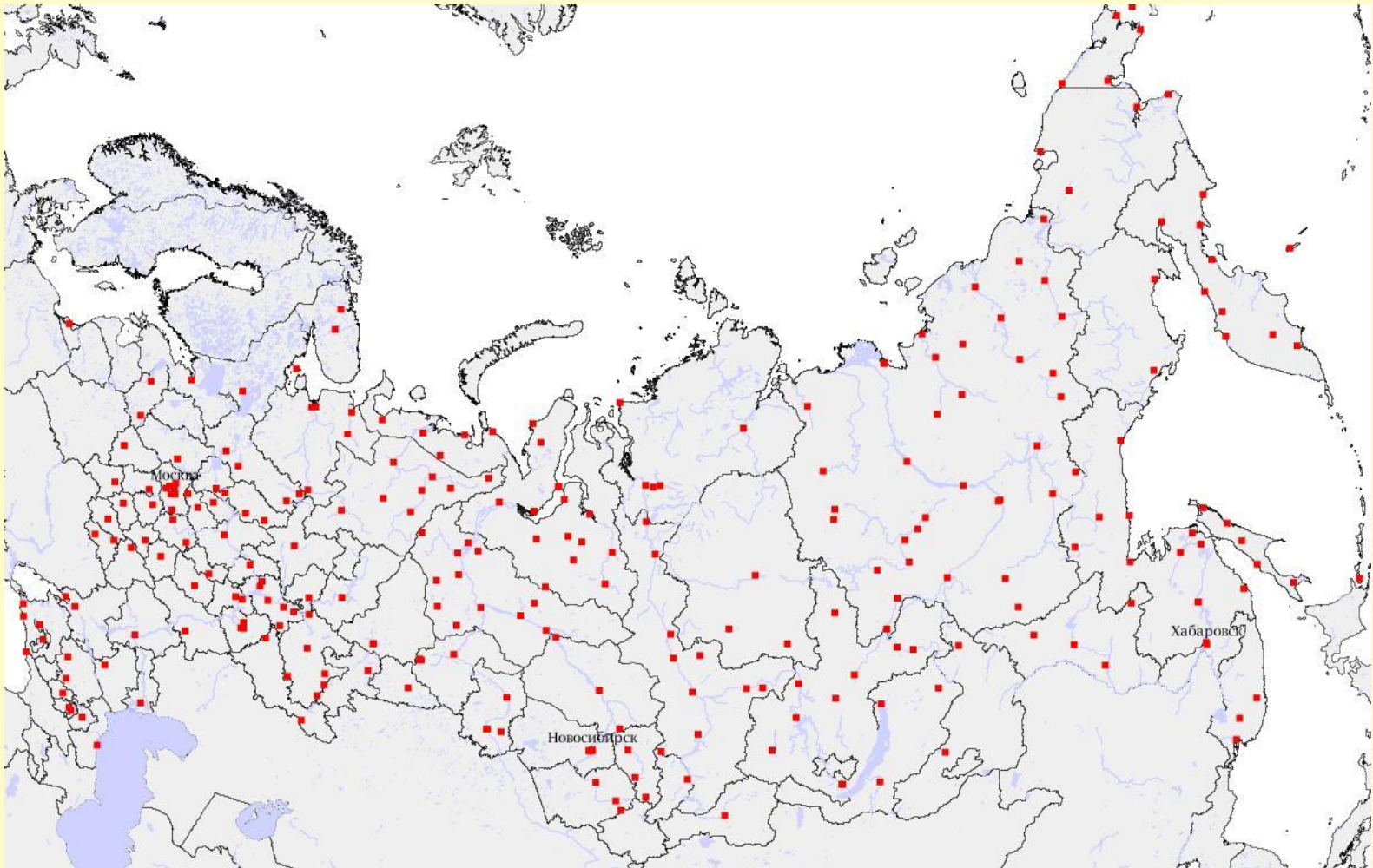
Пакет deegree.

Карта данных наблюдений

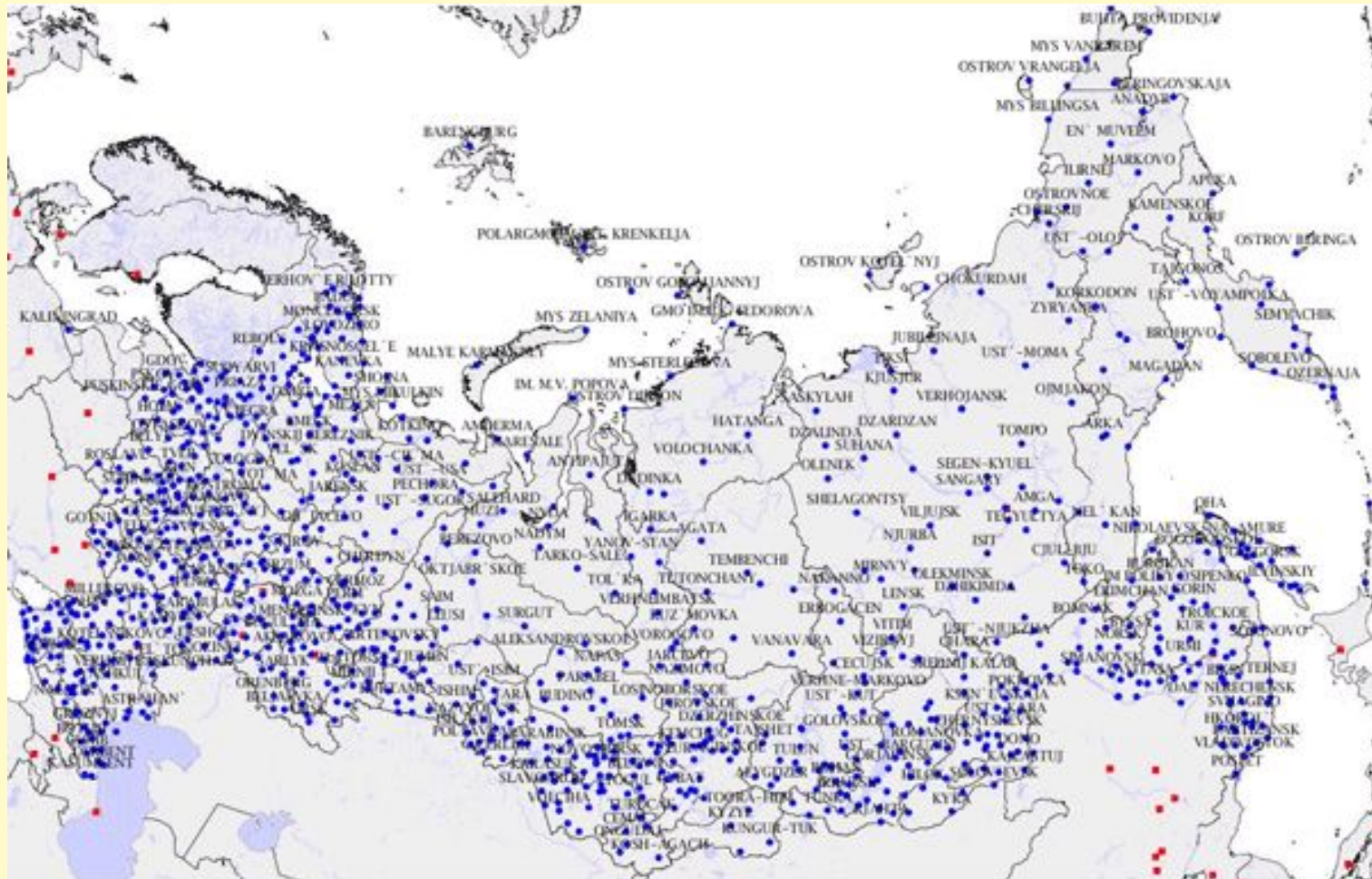


Пакет GeoServer.

Аэропорты РФ. Полярная проекция



Пакет GeoServer. Метеорологические станции. Полярная проекция.



Пакет GeoNetwork. Стандарт CSW.

WIS portal - DCPC Obninsk - Mozilla Firefox

portal.dpcp.meteo.ru/pages/meta_upld.html

WMO Information System (Russian Segment)

Home Registration Metadata Data Administration Documents

Federal Service and Monitoring for Hydrometeorology Environment

Home Contact us Links About Help English Username Password Login

WHAT?

WHERE?

Search Reset Advanced Options

Applications
Audio/Video
Case studies, best practices
Conference proceedings
Datasets
Directories
Interactive resources
Maps & graphics
Other information resources
Photo

GeoRSS

- HHUC92 GRIB bulletin available from RUMS (MOSCOW) at 00 and 12 UTC
- HVSC92 GRIB bulletin available from RUMS (MOSCOW) at 00 and 12 UTC
- HTUG85 GRIB bulletin available from RUMS (MOSCOW) at 00 and 12 UTC
- HUSK25 GRIB bulletin available from RUMS (MOSCOW) at 00 and 12 UTC
- HVTC30 GRIB bulletin available from RUMS

Show map

Sort by relevance

SMRS20 COLLECTION OF SYNOP REPORTS AVAILABLE FROM RUMS (MOSCOW) AT 00, 06, 12 AND 18 UTC

Abstract: ---- The bulletin collects SYNOP reports: FM 12 (SYNOP, Report of surface observation from a fixed land station). (Refer to WMO No.306 - Manual on Codes for the definition of WMO international code...

Keywords: atmospheric conditions, 23226, 23701, 28909

Metadata

Identification info

Title	SMRS20 collection of SYNOP reports available from RUMS (MOSCOW) at 00, 06, 12 and 18 UTC
Date	2007-01-01
Date type	Publication: Date identifies when the resource was issued
Title	WMO Information System (WIS)
Date	WMO Information System (WIS)

Code: urn:x-wmo:bulletin:int.wmo.wis::SMRS20RUMS

Presentation form: **Digital document:** Digital representation of a primarily textual item (can contain illustrations also)

Abstract: ---- The bulletin collects SYNOP reports: FM 12 (SYNOP, Report of surface observation from a fixed land station).

(Refer to WMO No.306 - Manual on Codes for the definition of WMO international codes)

Спасибо за внимание!