

Как поступить на магистратуру МРА, находясь в КР

Адилет-Султан Мейманалиев, МРА/ID

adilet-sultan@post.harvard.edu

4 декабря 2010 года

Путеводитель

Мотивация

Подготовка

Подача
документов

Master of Public Administration – профессиональная степень в области управления, анализа, разработки и реализации политики в государственном секторе

- Кто я?
- Видение
- Зачем?

- Изучение
- Финансы
- План

- Он-лайн

Мотивация

КТО В?

Видение

Зачем?

НОСТЬ
ПОСВЯ
ТИТЬ

2-4

года

ЖИЗНИ

УЧЕБЕ

СТРОИ

ЛЕНИИ

НОСТЬ

КАРЬЕ

ВЗЯТЬ

ГОДА

ОБЪЕЗДА

ГДЕ

ТЕЛЕС

ХОЧЕТ

ЛЮБИТ

СА

ЖИТЬ/

РАБОТ

ЧТО/КА

АТЬ
К В

ДЕЛА

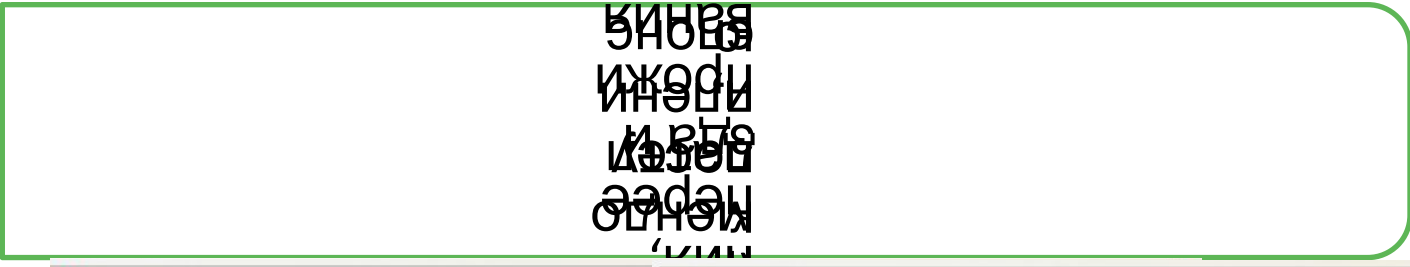
Ю

Хоро

ом,

эфт

Подготовка



Имя •
 ФИО
 ИЖОДИ
 ИЭДИ
 ИЭДИ
 ИЭДИ
 ИЭДИ
 ИЭДИ

FAQ for Prospective Applicants

http://www.hks.harvard.edu/degrees/admissions/apply

Latest Headlines | Yahoo! Mail (adlet) | http://www.h

WEB SEARCH

Harvard Kennedy School - Appli...

HARVARD Kennedy
 JOHN F. KENNEDY SCHOOL OF GOVERNMENT

About Us

Home > D

APPLYING TO HKS

- + Online Application
- + Application Deadlines
- + Frequently Asked Questions

Welcome from our Dean

Harvard Kennedy School is about an abiding commitment to advancing the public interest.

MORE ▶

Why Harvard Kennedy School?

Find out why Harvard Kennedy School provides a unique experience and

For a list of frequently asked admissions questions, please refer to the main Admissions website's sections on [Applying to HKS](#) and [FAQs](#). Topics specific to MPA/ID applicants are addressed below.

What are the academic prerequisites for the program? How much quantitative preparation is required?

The MPA/ID program has prerequisite courses so that students will be adequately prepared for the rigor of the core curriculum. The prerequisite coursework ensures that the whole class shares a common foundation of quantitative and economic skills so that the class can cover more sophisticated material than would otherwise be possible.

Apply The prerequisite course requirements are one university level course in each of the following:

- Microeconomics
- Macroeconomics
- Multivariable calculus (usually the third course in a university-level calculus sequence)

Statistics and linear algebra are also desirable, although not required.

One semester introductory courses that cover both microeconomics and macroeconomics do not prepare students adequately for the advanced economics courses in the MPA/ID core, and thus do not fulfill the academic prerequisite. Multivariable calculus is not the same as multivariate statistics, which does not fulfill the requirement. CFA

se.ac.uk/study/graduate/taughtProgrammes2011/MPA/Home.aspx

Yahoo! Mail (adlet) | http://www.hks.harv...

WEB SEARCH

LSE website | Staff & students | Library | Academic d

THE LONDON SCHOOL OF ECONOMICS AND POLITICAL SCIENCE ■

A-Z site index | Contact | Maps | J

Study | Life at LSE | Alumni | Research and expertise | Business and consultancy | News and media | Publ even

MPA Programme

The MPA is an interdisciplinary degree devised to meet the needs of government departments and public agencies in many countries for highly skilled and professional policy-makers. It also meets the needs of people working with governments but in the private sector, for instance in consultancy, public-private partnerships, public affairs, media non-governmental organisations and interest groups.

The degree is taught over 21 months; year one is a complete academic year and year two lasts from October to June. It brings together LSE's unrivalled expertise in the social sciences with individual and group working experience of public sector problems, policies and management.

There are five MPA streams:

- [MPA Public and Economic Policy Structure](#)
- [MPA Public Policy and Management Structure](#)
- [MPA International Development Structure](#)
- [MPA European Public and Economic Policy Structure](#)
- [MPA Public and Social Policy Structure](#) (from 2011/2012)

In addition to the core training common to all MPAs, each student undertakes further compulsory courses depending on which stream they are enrolled on.

The LSE MPA offers the following benefits:

- Equips talented students with professional skills and knowledge to undertake and advise on public policy-making and implementation in a wide range of contexts.

ramme

Objectives

ibuting to MPA Core Courses

ramme Structure

Degrees

r Asked Questions

Capstone Project

profiles

destinations

ful links

Подготовка

Criteria for Admission to the MPA/ID Program

The MPA/ID Program is a rigorous economics-centered program designed to prepare development practitioners. When evaluating an application, the Admissions Committee looks for:

→ Strong academic record, including good grades in economics and mathematics courses.

→ Required prerequisite courses, including at least one university-level course each in microeconomics and macroeconomics, and three university-level courses in calculus, which must include multivariable calculus. Statistics and linear algebra are desirable, but not required.

→ Demonstrated commitment to the field of international development and compelling evidence of professional potential in the field. While work experience is not an absolute requirement, development work often serves to demonstrate this commitment.

→ Strong recommendations from academic and professional recommenders who know you well and can comment on the qualities needed for this program.

→ Competitive GRE or GMAT quantitative section score. In general, candidates who score in the top 80th percentile and above on the GRE or GMAT quantitative section are most competitive for admission.

→ For applicants whose native language is not English, evidence of fluency in English as demonstrated by a minimum TOEFL score.

Please note that simply meeting the criteria above does not guarantee admission. The MPA/ID Program receives many more applications from candidates than can be admitted. All aspects of each application are carefully considered, and offers of admission are made to the strongest candidates.

The MPA/ID application includes several essays. The suggested length for all essays is 500-750 words.

1. The Admissions Committee is interested in your academic, professional and personal development. A copy of your resume or CV is sufficient, including the following information: employment held—including titles of jobs, start/end dates, responsibilities, salary (please include any gaps in employment history); academic degrees, achievements and honors; volunteer, public service, political work you have done; recent leadership experiences and awards; extracurricular activities and interests.
2. If you have any concerns about your prior academic background, or if you believe the Admissions Committee may have concerns, please give a brief explanation of your performance in college, or your standardized test scores (750 word limit).
3. Discuss your decision to choose international development as your professional career. Also, explain how developing your analytic skills relates to your career in development (750 word limit).
4. Describe an event or experience in which you exercised a significant decision-making, management, or leadership role (750 word limit).
5. Describe a public policy or public management problem related to international development and analyze a range of solutions (750 word limit).
6. At least one college level course in microeconomics, macroeconomics and multivariable calculus must be completed before enrollment. Statistics and linear algebra are desirable, but not required. Explain how you have met these requirements, or how you propose to meet them before enrolling in September. Please include descriptions of mathematics courses you have taken that covered calculus and multivariable calculus, as well as descriptions of any courses whose titles do not clearly indicate the content (e.g. Mathematics II or Advanced Mathematics). Official descriptions copied from your college's course catalogue or on-line course catalogue are preferred.

Подготовка

Изучение

ИЖОДП
И ВИН
енуво
ИТСО
ИИОТС •

Ю
ИНЭП
ПОСТУ
К

Please refer to the instructions included with the online application for complete details on application requirements. In general, a completed application includes:

- a submitted online application,
- payment of the \$100 application fee,
- essays,
- three letters of recommendation,
- official academic transcripts, and
- **standardized tests**: GRE, GMAT, TOEFL (requirements vary; see online application instructions for details).

[Click Here to Apply](#)

Admissions documents must be submitted online by the **deadline**. Applications may not be reviewed if all materials have not been submitted Harvard Kennedy School's Office of Admissions by the application deadline.

International Student Budget

The figures below are the costs of attendance for the 2010-2011 academic year at Harvard Kennedy School. Tuition and fees are subject to change without notice.

Financial Certification Budget for MPP, MPA2, MPA/ID, and PhD Programs

Tuition	\$39,041
Activity Fee	\$175
Emergency On-Campus Health Services Fee	\$1,166
Health/Hospital Insurance (BC/BS)	\$1,788
Total Tuition and Fees	\$42,170
Estimated Living Expenses (9 months)	\$19,377
Estimated Cost for Arrival/Relocation/Personal/Travel	\$4,786
Books and Supplies	\$1,948
Total Indirect Costs	\$26,111
Total Funds Required for Financial Certification (Student Only)	\$68,281

Подготовка

ИЖОДИ
И БИН
ЭНУЭ
ИТСО
ИНОО

ЭИНЭНУЭИ

- payment of the \$100 application fee,
- official academic transcripts, and
- **standardized tests: GRE, GMAT, TOEFL**

Оплата
кредитной
карточкой

ИЭНЭНИФ

- **GRE \$190**
- Подготовка
<http://ets.org/gre/general/prepare>

- **GMAT \$250**
- Подготовка
<http://www.gmac.com/gmac/thegmat/testtakersupport/>

- **TOEFL \$150-225**
- Подготовка
<http://www.ets.org/toefl/ibt/prepare/>

НАГЦ

Тест-центры

- Национальный ИТ Центр, пр. Чуй 265а, Бишкек 720071
- ул. Байсеитова 40/1, г.Алматы 050013

Ресурные центры Фонда-Сороса Кыргызстан

ХДОЭН
Б

Подготовка

ИЖОДИ
И БИН
енхүү
ИТСО
Иидо •

Изнээн

- payment of the \$100 application fee,
- official academic transcripts, and
- **standardized tests: GRE, GMAT, TOEFL**

Финанс

Tuition	\$39,041
Activity Fee	\$175
Emergency On-Campus Health Services Fee	\$1,166
Health/Hospital Insurance (BC/BS)	\$1,788
Total Tuition and Fees	\$42,170

План

Estimated Living Expenses (9 months)	\$19,377
Estimated Cost for Arrival/Relocation/Personal/Travel	\$4,786
Books and Supplies	\$1,948
Total Indirect Costs	\$26,111
Total Funds Required for Financial Certification (Student Only)	\$68,281

Подготовка

- Университет,
 - Рекомендация
 - Подготовка к
 - Эссе – 2-12 нед
 - Спонсоры – 3
- (<http://content.k>)
предпринимател

Application Deadlines

Program:	Online Submission Completed by 5:00 pm EST on:	Notification by:
MPP, MPA/ID, MPA2, PhD in Public Policy and Nondegree	December 3, 2010	March 31, 2011
MC/MPA and MC/MPA Edward S. Mason Program	December 3, 2010	April 30, 2011

И
ошо знающие Вас,

, НБКР,

December 3,
2010

applications and be admitted by each school.

План

и

и

и

и

и

и

и

и

и

и

Подача документов

- Он-лайн – <https://apply.embark.com/Grad/Harvard/KSG/10/>

- 1. Сперва поступить
- 2. Финансы после

Урррааа!!!

Ищем спонсора

Да

Магистратура МРА

Нет

Мотивация

Подготовка

Подача документов



Вопросы

