

Visual Studio Team System

Sergiy Baydachnyy
Developer Evangelist
Microsoft

Success?

2
0
0
4
0
0



Source: The Standish Group International, *Extreme Chaos*, The Standish Group International, Inc., 2000



Average cost overrun:
45%

Time overrun:
63%

Functionality delivered on average:
67%

Standish Group

Team of peers



Visual Studio 2005

“Продуктивность”

Hobbyists

Students

Enthusiasts

Novices

Web Professionals

Visual Basic 6 Devs

Part-Timers

Solo Professionals

Consultants

Project Managers

Testers

Architects

Enterprise Devs

Microsoft
Visual Web Developer
Express Edition

Microsoft
Visual Basic
Express Edition

Microsoft
Visual C++
Express Edition

Microsoft
Visual C#
Express Edition

Microsoft
Visual J#
Express Edition

Microsoft
Visual Studio 2005
Professional Edition

Microsoft
Visual Studio 2005
Standard Edition

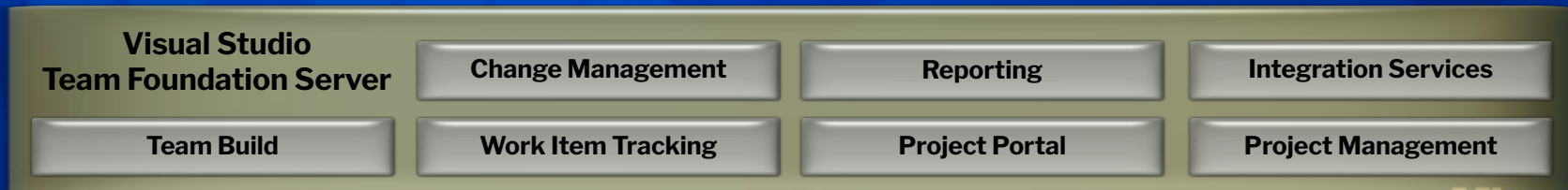
Microsoft
Visual Studio 2005
Team System

Microsoft

Visual Studio Team System

Process and Architecture
Guidance

Visual Studio Industry
Partners



Demo

Тестирование, профилирование и
покрытие кода



Team Foundation Server

- Project Templates
- Version Control
- Work Item Tracking
- Team Portal
- Team Foundation Build
- Team Reporting
- Project Management
- Team Explorer

Шаблоны: MSF Agile, CMMI

Встроенная методология разработки ПО

- Поддержка быстрого (Agile) и детального (CMMI) процессов.
- Настройка проекта
- Каждый проект может иметь свой шаблон
- Поддержка шаблонов от сторонних компаний и партнеров

Project Portal

Overview Roles Work Items Index Glossary

Concepts
Cycles and Iterations
Principles

Visual Studio Team System 2005

Process Guidance

Microsoft Solutions Framework (MSF) Agile is the process guidance for the current Team Project. This page introduces key concepts.

Team System

Team System provides tools that you can use to enact the MSF guidance.

Users and Groups

Team members log in as Users. Users belong to Groups, which enforce security privileges, and can be used to implement Roles.

Work Item Database and Metric Warehouse

Everything planned or tracked for the Team Project is managed in a database. Those records are called work items. They can track the state of activities or tasks within them.

Roles

Team members assume one or more Roles.

Work Streams and Activities

Roles do activities, which are grouped in Work Streams. Activities may produce certain Work Products and may require Work Products in certain states before they can be performed.

Work Products

Work Products are the documents, spreadsheets, project plans, source code, and other intangible output from the activities.

Source Control and Project Portal

Team Foundation Source Control stores some of the Work Products, such as source code and text. The rest, such as documents, spreadsheets, and project plans are stored on the Project Portal. Spreadsheets and Project Plans may be linked to the Work Item Database.

Legal stuff : More legal : Blah blah blah

Demo

Изменение шаблона



Work Items

Work Item – общий термин для объекта информации в процессе разработки ПО. Примеры: Баг, Рабочее задание, SLA, Спецификация, Сценарий

- Встроен IDE
- Настраиваемый, может включать любую необходимую компании информацию
- Настраиваемый поток оборота, состояния, и нотификации
- Включает шаблоны процессов, т.е. разные проекты могут следовать общей методологии

The screenshot displays a web-based interface for tracking work items. The window title is 'Task 49' and the browser tabs include 'All Tasks [Results]', 'frmMain.cs', 'frmMain.cs [Design]', 'Program.cs', 'ResultList.cs', 'ResultList.cs [Design]', and 'frmMain.resx'. The main content area is titled 'Task 49 : Create Vision Statement'.

Title: Create Vision Statement **Type:** Analysis

Classification:

- Area path:** KenTest
- Iteration path:** KenTest\Iteration 0

Status:

- Assigned to:** (empty)
- Blocked:** No
- Priority:** 3
- State:** Closed
- Severity:** Low
- Reason:** Complete and Does Not Require Review/Test
- Triage:** Pending

Description | **History** | **Links** | **Attachments** | **Details**

History:

- 12/20/2005 10:19:50 AM Edited (Active to Closed) by
Show Changed Fields
- 12/8/2005 1:21:25 PM Edited (Proposed to Active) by
Show Changed Fields
- 12/5/2005 1:56:29 PM Created by
Show Changed Fields

Microsoft Excel - All Items.xls

Title	Kind	State	Priority
Instore pickup: Customers should be able to pickup their online orders in a retail store.	Requirement	Active	1
Store locator: The website should provide the store locator functionality.	Requirement	Active	1
Store search: Customers can locate a store by City, State, Zip Code	Requirement	Active	1
Store Map: The website should assist the customer with map and driving directions to the store of their choice	Requirement	Active	1
Store inventory: Customers should be able to check inventory by store or a store within a specified radius.	Requirement	Active	1
Hold inventory: The website should allow customers to reserve inventory for 4 days	Requirement	Active	1
Confirmation: Customers should be notified upon the completion of the sale	Requirement	Active	1

Присваивание ресурсам work items через Microsoft Project

Создание work items в Microsoft Excel

Microsoft Project - All Items.mpp

Work Item ID	State	Task Name	Duration	Finish	Resource Names
1	Active	Development	3 days	Wed 4/28/04	Art Benson(6%)
2	Active	Design instore pickup, store locator and inventory services	2 days	Tue 4/27/04	Art Benson
3	Active	Identify implementation tasks for new services	1 day	Wed 4/28/04	Art Benson
4	Active	Testing	13 days	Mon 5/17/04	Renee Davis(6%)
5	Active	Scenario Tests	10 days	Wed 5/12/04	Renee Davis
6	Active	Test Instore pickup: Customers should be able to pickup their online orders in a retail st	3 days	Mon 5/3/04	Renee Davis
7	Active	Test Store locator: The website should provide the store locator functionality.	1 day	Tue 5/4/04	Renee Davis
8	Active	Test Store search: Customers can locate a store by City, State, Zip Code	1 day	Wed 5/5/04	Renee Davis
9	Active	Test Store Map: The website should assist the customer with map and driving directio	1 day	Thu 5/6/04	Renee Davis
10	Active	Test Store inventory: Customers should be able to check inventory by store or a store	1 day	Fri 5/7/04	Renee Davis

Microsoft Development Environment

Portfolio Explorer

Adventure Works

Cross Projects

My Favorites

Tour Package Services v2.0

Tour Package Services v2.1

Work Item Queries

Public Queries

Active Items

All Items

My Active ...

My Items

All Bugs ...

All My Bug...

Private Queries

Advanced Query

Result Options

ID	Status	Priority	Title	Kind
xxxxxx	Active	1	Instore pickup: Customers should be able to pick...	Requirement
xxxxxx	Active	1	Store locator: The website should provide the st...	Requirement
xxxxxx	Active	1	Store Search: Customers can locate a store by ...	Requirement
xxxxxx	Active	2	Store Map: The website should assist the custo...	Requirement
xxxxxx	Active	1	Store Inventory: Customer with map and driv...	Requirement
xxxxxx	Active	2	Hold Inventory: The website should allow custom...	Requirement
xxxxxx	Active	2	Confirmation: Customers should be notified up...	Requirement

Query Results: 7 results found

State: Active

Reason: New

Assigned To: JacquiAckerman

Kind: Requirement

Description: Instore pickup: Customers should be able to pickup their online orders in a retail store per contract number 999.

Opened by JacquiA (Task 55559)

Donec posere dui eu erat lobortis commodo. Nunc sit amet purus quis tellus venen et ante. Nulla feugiat ante ut augus. Nunc egestas turpis vel nulla.

Center comment

Ready

Microsoft Developme...

2:54 PM

Work items в Visual Studio

Microsoft Excel - PhaseView

Title	Phase	Iteration	Status	Reason	Priority	Process	Docs	Reports
Activate	Plan	It	Open	Resolution Confirmed	1	PG	Guidance	
Identify & Assign Team Resources	Plan	It	Closed	Resolution Confirmed	1	PG	Project Structure	
Validate objectives	Plan	It	Closed	Resolution Confirmed	1	PG	Vision Scope	
Gather requirements	Plan	It	Closed	Resolution Confirmed	1	PG	Requirements	Reqmnts By
Analyze	Plan	It	Closed	Resolution Confirmed	1	PG	Solution Concept	Scenarios
Create usage scenarios	Plan	It	Closed	Resolution Confirmed	1	PG	Usage Scenarios	
Build use cases	Plan	It	Closed	Resolution Confirmed	1	PG		
Document Solution Concept	Plan	It	Closed	Resolution Confirmed	1	PG		
Create architecture and design	Plan	It	Resolved	Fixed	1	PG		
Design Instore pickup, store locator and inventory services	Plan	It	Resolved	Fixed	1	PG		
Specify Features	Plan	It	Resolved	Fixed	1	PG	Feature Specifications	Prioritized Milestone
Estimate Schedule and Costs	Plan	It	Resolved	Fixed	1	PG		
Code Features	Implement	It	Resolved	Fixed	1	PG		Workload
Implement Business Logic for Find Store	Implement	It	Resolved	Fixed	1	PG		
Unit Test Features	Implement	It	Resolved	Fixed	1	PG		Stress Test Code
Refactor Features	Implement	It	Resolved	Fixed	1	PG		
Test	Implement	It	Resolved	Fixed	1	PG		
Write Test cases	Implement	It	Resolved	Fixed	1	PG		Workload
Complete Test Passes (all other in-depth tests)	Implement	It	Resolved	Fixed	1	PG		Daily Build
Run Load Test on Lab Configuration	Implement	It	Resolved	Fixed	1	PG		
Resolve Bugs	Implement	It	Resolved	Fixed	1	PG		Resolved
Stabilize	Implement	It	Resolved	Fixed	1	PG		
Perform Integration Testing	Implement	It	Resolved	Fixed	1	PG	Build Convergence	ZBB Trend
Reach ZBB	Implement	It	Resolved	Fixed	1	PG		
Final Customer Acceptance Test	Implement	It	Active		1	PG		
Release	Deploy	It	Active		1	PG		
Identify Release candidates	Deploy	It	Active		1	PG		
Release to Production	Deploy	It	Active		1	PG	Release Signoff Form	
Transition	Deploy	It	Active		1	PG		
Complete final documentation	Deploy	It	Active		1	PG		
Transfer to operations	Deploy	It	Active		1	PG		
Closeout	Deploy	It	Active		1	PG		
Obtain customer approval	Deploy	It	Active		1	PG		
Post Project Review	Deploy	It	Active		1	PG		Post Project Analysis

Plan / Implement / Deploy / All Phases

Состояние проекта в Microsoft Excel или Microsoft Project

Work Item Type Definition

- Name
- Description
- Fields
- Work Flow
- Field Rules
- Form
- Global Lists
- Transition Actions

```
<WITD application="my editor" version="1.0">
  <WORKITEMTYPE name="Custom Code Defect">
    <FIELDS>
      <FIELD name="Severity" refname="Custom.Severity"
type="Integer">
        <HELPTEXT>How severe the code defect is</HELPTEXT>
        <REQUIRED />
      </FIELD>
    </FIELDS>
    <WORKFLOW>
      <STATES>
        <STATE value="Active" />
      </STATES>
      <TRANSITIONS>
        <TRANSITION from="" to="Active">
          <REASONS>
            <DEFAULTREASON value="New" />
          </REASONS>
        </TRANSITION>
      </TRANSITIONS>
    </WORKFLOW>
    <FORM>
      <Layout>
        <Control Type="FieldControl" FieldName="Custom.Severity"
Label="Severity" LabelPosition="Left" />
      </Layout>
    </FORM>
  </WORKITEMTYPE>
</WITD>
```

Управление проектом: Прогнозирование

- Задачи из плана проекта связаны с Work Items
 - РМ получает извещение при изменении статуса WI
 - РМ управляет WI через Project
- Анализ данных вместо сбора данных
 - РМ может уделять больше времени работе над проектом и принимать стратегические решения
- TFS встроен в инструменты используемые вами и вашей командой
 - Visual Studio, Office, Project & SharePoint
 - Уменьшает риск – идентифицирует проблемы в более ранней стадии
- Улучшает процесс коммуникаций между членами команды разработчиков, менеджментом

Team Foundation – Версионный Контроль

Новая система контроля

- Построена с нуля
- 3-tier ASP.NET веб-служба
- SQL Server 2005 для данных

Новые функции

- Интегрированный check-in
- Shelving
- Обзорщик системы ВК
- И т.д....

Построен для бизнеса

- Поддержка географически-распределенных команд
- Безопасность, Надежность, Расширяемость

Поддержка свойств ВК

Checkin «атома»

Интеграция Work Item

Checkin политики

Shelving

Delta хранения файлов

Delta хранения бинарных
файлов

Поддержка файлов >4GB

Поддержка распр. команд

Да

Нет



Поддержка свойств ВК

Email o Checkin

Да

Нет



Поддержка других ОС



Расширяемость Diff Tool



Shared Checkout



Интеграция с VS 2003



Расширяемость keyword



Pinning & Sharing



Shadow Folders



Shelvesets

- Коллекция pending изменений, комментариев и связанных с ними work items
- Примеры
 - Бэкап (Backup)
`tf shelve /i MyWork`
 - Временно убрать изменения, чтобы работать над другой проблемой
`tf shelve /i MyWork /move`
 - Проверка кода дистанционно (Remote code reviews)
`tf unshelve CoolStuff;joe`
 - Координация изменений и билды
`tf unshelve CoolStuff;joe`

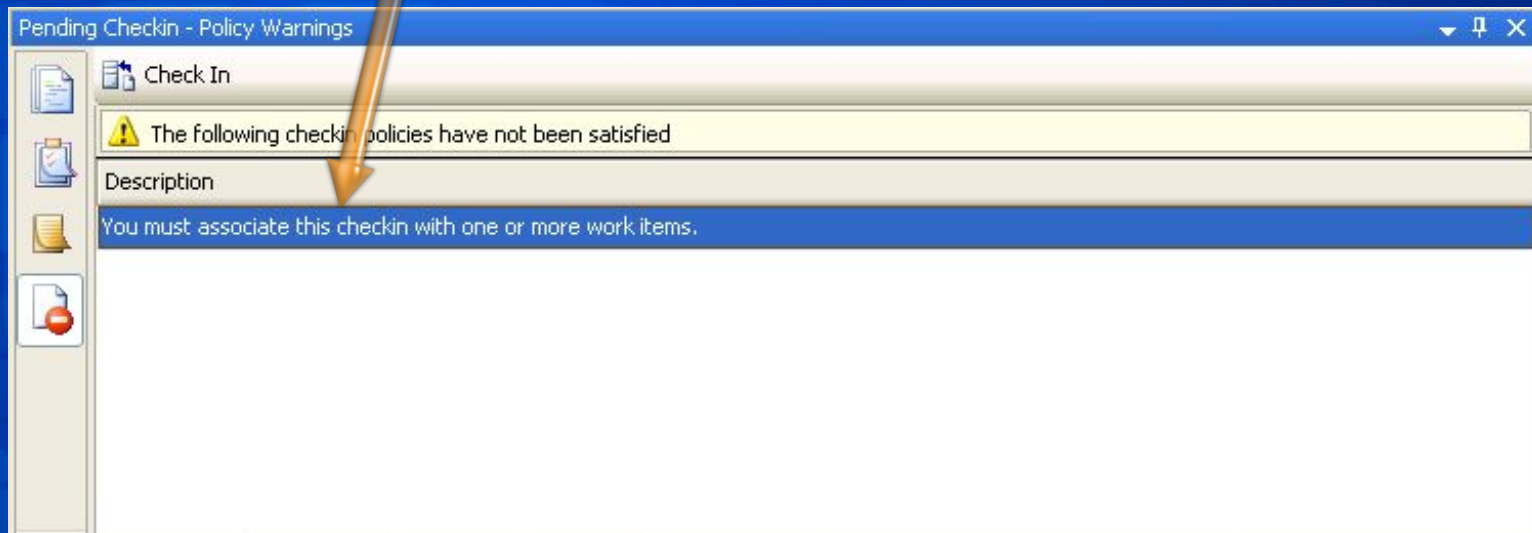
Политики для Check-in

- Ограничения на изменения
- 3 политики входят в поставку
 - Связанные Work items
 - Успех тестов для Check-in
 - Успех Статического анализа
- Расширяемость через нашу модель плагинов
 - Напиши свою политику!

Управление изменениями

Политика Work item check-in

У каждого check-in'a
должен быть
связанный WI



Управление изменениями

Политика Work item check-in

Ассоциация work items с изменениями ИСХОДНИКОВ

Переход состояния work items

Type	Id	Title	Status	Checkin Action
<input type="checkbox"/> Bug	216	perf improvements	Active	
<input checked="" type="checkbox"/> Bug	218	AddToCart: Perf does not meet 15 second requirement.	Active	Resolve
<input type="checkbox"/> Bug	221	Build failure in build test - ecutts otb3_050331.00001	Active	
<input type="checkbox"/> Bug	224	Build failure in build MainBuild_050401.00003	Active	
<input type="checkbox"/> Bug	725	Build failure in build MainBuild_050406.00001	Active	

Управление изменениями

Политика Work item check-in

The screenshot displays the Microsoft Visual Studio interface. The main window shows a bug report for 'Bug 218' with the title 'AddToCart: Perf does not meet 15 second requirement.' The bug is in an 'Unchanged' state. The 'Classification' section shows the area as '\I3Walkthrough\Project Structure' and the iteration as '\I3Walkthrough\Project Iteration'. The 'Status' section shows it is assigned to 'dougn', has a priority of '2', and is in an 'Active' state with a 'Resolution Denied' reason. Below this, there are tabs for 'Summary', 'Links', 'File Attachments', and 'Details'. The 'Links' tab is active, showing a table of links:

Link Type	Description	Comments
Source Code File	Latest version of \$/I3Walkthrough/AdventureWorks-branch/Adven...	Project to make this cha...
Fixed in Changeset	Changeset 37	source control changes...

An arrow points from the 'Fixed in Changeset' link to a secondary window titled 'Details for Changeset #37 - Source Files'. This window shows the details of the changeset, including a comment: 'Implemented the caching code.' Below the comment is a table of source files:

Name	Change	Folder
WebService1.cs	edit	\$/I3Walkthrough/Adventure...

At the bottom of the changeset details window, it shows 'Changeset #: 37', 'Created On: 3/31/2005 17:15:14', and 'By User: NORTHAMERICA\dougn'. There are 'Save Changes' and 'Cancel' buttons at the bottom right of this window. Another arrow points from the 'Fixed in Changeset' link to the 'Fixed in Changeset' link in the table above.

Позже легко просмотреть
изменения исходников из
WI

Аудит WI

Requirement 10508 : Developer creates an account and SSK system verifies email

Title: Type:

Classification

Area path:

Iteration path:

Status

Assigned to: Blocked:

Priority: State:

Triage: Reason:

Committed:

Description | Analysis | Subject Matter Experts | History | Links | Attachments | Details

History:

1/5/2006 11:23:06 AM Edited by Juan Perez (Personify Design)

Show Changed Fields

Field	Old Value	New Value
Rev	4	5
Triage	Pending	Triaged

1/5/2006 11:21:38 AM Edited by Juan Perez (Personify Design)

Show Changed Fields

Field	Old Value	New Value
Rev	3	4
Description	Upon arriving to SharwareStarterKit.com, Jeff (the C++ Developer) reads the home page and realizes that he needs an account. He clicks on the 'Create Account' button which takes him to a form where he can provide his information and complete the form by clicking the 'Create User' button. A message is provided that the provided email will be verified before the user can continue to use the system.	Upon arriving to SharwareStarterKit.com, Jeff (the C++ Developer) reads the home page and realizes that he needs an account. He clicks on the 'Create Account' button which takes him to a form where he can provide his information and complete the form by clicking the 'Complete' button. A message is provided that the provided email will be verified before the user can continue to use the system. If the user doesn't verify his/her email in 3 days, the account is automatically deleted during a daily database cleanup.

1/5/2006 11:20:30 AM Edited by Juan Perez (Personify Design)

Show Changed Fields

Field	Old Value	New Value
Rev	2	3
Priority	2	1

1/5/2006 10:12:53 AM Edited by Juan Perez (Personify Design)

Show Changed Fields

1/5/2006 9:57:29 AM Created by Juan Perez (Personify Design)

Show Changed Fields

Все задачи, исходники, тесты – как на ладони

Поддержка больших компаний

Разработка в удаленной среде, и т.д.

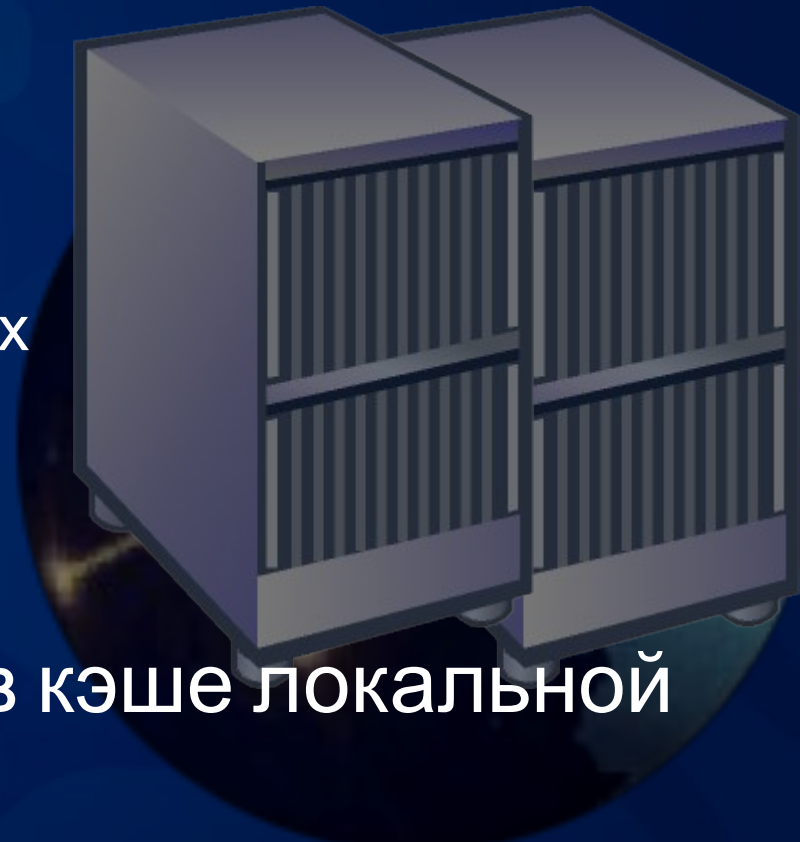
Дизайн для Интернета:
Протоколы HTTP &
HTTPS

Оптимизация для латентных
и медленных сетей

Кэш-прокси:

содержание файлов в кэше локальной
сети

Хорошо подходит для региональных
офисов



Переход на TFS с VSS

- VSSConverter – миграционная программа
- Импортирует репозитарий VSS в TFS
- Командная строка
- Легко мигрирует большинство VSS репозитариев
 - VSS Shared - копируются
 - VSS Pinned – копируются и метятся как “PINNED” в TFS

Автоматизация Билда



- Цель: простота
 - Повторяемые билды
 - Проекты VS строятся «напрямую»
 - Билды по расписанию или по требованию
 - Отчет о билде
- Базируется на MSBuild
- 100% автоматизированное решение, легко конфигурировать и использовать
- Билд от начала и до конца
- 100% расширяемое за счет механизмов расширения MSBuild (создание собственных «build tasks» и логгеров)

Шаги Автоматиз. Билда

1

Build
инициируетс
я с сервера

Создается
build ID

Документ.
среда build'а

Синхрониза
ция
исходников
и INSTR.

2

Компиляция
и анализ

Исполнение
Тестов

Обновить
work items

3

посчитать
покрытие
кода

Посчитать
code churn
(изменения)

Публикация
отчета о
билде

Публикация
билда

История Билда

Builds

Report Generated: 1/19/2006 10:13:51 AM by REDMOND\tompat; Last Warehouse Update: 1/19/2006 9:49:52 AM

What are the details for the builds?

Build Name	Flavor	Platform	Build Quality	% Tests Passed	% Code Coverage	% Code Churn
Debugx86_20060118.25	Debug	x86	Unexamined	78.205 %	6.294 %	0.976 %
Debugx86_20060118.24	Debug	x86	Unexamined	85.897 %	5.994 %	3.068 %
Debugx86_20060118.23	Debug	x86				
Debugx86_20060118.22	Debug	x86				

Build Debugx86_20060118.25

Summary

✓ Successfully Completed

Build name:	Debugx86_20060118.25
Team project:	CMMI_0118
Type:	Debugx86
Build machine:	REPORTCHOW
Started on:	1/18/2006 7:30:43 PM
Completed on:	1/18/2006 7:31:32 PM
Quality:	Unexamined
Work items opened:	Not available
Log:	\\reportchow\TFRobotDrops\Debugx86_20060118.25\BuildLog.txt

Build steps

✓ Successfully Completed

Build Step	Completed On
Initializing build	1/18/2006 7:30:49 PM
Getting sources	1/18/2006 7:31:12 PM
Compiling sources	1/18/2006 7:31:14 PM
Compiling TFRobotUnitTestSampleSolution.sln for x86/Debug	1/18/2006 7:31:13 PM
Compiling TFRobotApplication.csproj	1/18/2006 7:31:13 PM
Compiling TFRobotTest.csproj	1/18/2006 7:31:13 PM
Generating list of changesets and updating work items	1/18/2006 7:31:32 PM
Copying binaries to drop location	1/18/2006 7:31:32 PM
Copying log files to drop location	1/18/2006 7:31:32 PM
Successfully Completed	1/18/2006 7:31:32 PM

Result details for x86/Debug

0 Errors, 0 warnings, 61/64 tests passed, 6

Associated changesets

ID	Checked In By
1765	REDMOND\tompat
1766	REDMOND\tompat

Отчет о билде

Build Nightly_20060119.2

Summary

Build name:	Nightly_20060119.2
Team project:	Teamlook
Type:	Nightly
Build machine:	PERSONIF-IHITS3
Started on:	1/19/2006 5:46:35 PM
Completed on:	1/19/2006 5:47:38 PM
Quality:	Unexamined
Work items opened:	Not available
Log:	\\personif-ihits3\ffrobotdrops\Nightly_20060119.2\BuildLog.txt

Failed

Build steps

Build Step	Completed On
Initializing build	1/19/2006 5:46:41 PM
Getting sources	1/19/2006 5:46:43 PM
Compiling sources	1/19/2006 5:46:55 PM
Compiling TeamlookPro.sln for Any CPU/Release	1/19/2006 5:46:55 PM
Compiling Teamlook.csproj	1/19/2006 5:46:49 PM
Compiling SetupHelper.csproj	1/19/2006 5:46:52 PM
Compiling Build Verification Tests.csproj	1/19/2006 5:46:54 PM
Generating list of changesets and updating work items	1/19/2006 5:47:01 PM
Running tests	1/19/2006 5:47:37 PM
Running tests for Any CPU/Release	1/19/2006 5:47:36 PM
Copying binaries to drop location	1/19/2006 5:47:37 PM
Copying log files to drop location	1/19/2006 5:47:37 PM
Failed	1/19/2006 5:47:37 PM

Failed

Result details for Any CPU/Release

0 Errors, 12 warnings, 5/434 tests passed, 31 ([Release.txt](#))

Associated changesets

ID	Checked In By	Comments
31	REDMOND\w-jperez	Created team project folder \$/Teamlook via the Team Project Creation Wizard
32	REDMOND\w-jperez	Initial Checkin
33	REDMOND\w-jperez	Added tests
34	REDMOND\w-jperez	Created via Build Type creation wizard
35	REDMOND\w-jperez	Created via Build Type creation wizard
36	REDMOND\w-jperez	Adding PD Trace. Removing Setup Project
37	REDMOND\w-jperez	Adding Microsoft.TeamFoundation.WorkItemTracking.Controls to the project so that
38	REDMOND\w-jperez	Checking in a bunch of new unit tests
39	REDMOND\w-jperez	Fixing bugs and closing out tasks

Associated work items

ID	Title	State
2353	Create Personas	Closed
2473	Create more tests for the Query Managment area	Closed
2474	Work Item type not showing correctly when converting email to Work Item	Resolved
2475	Teamlook seems to hang Outlook on Startup	Resolved
2476	Need new images for Teamlook reports form	Closed
2477	Adding multiple servers to Teamlook causes exception	Resolved

Note: All dates and times are shown in Pacific Standard Time (GMT -08:00:00).

Provided by: [Microsoft Visual Studio® 2005 Team System.](#)

Результаты VVT как часть процесса билда

Кто что зачекинил?

Авто-рилиз: почему так было сделано

Портал Проекта

Способ коммуникаций между членами команды и метод распространения/хранения документов о проекте. Легкий доступ к состоянию проекта для тех, кто не принимает прямого участия в процессе разработки ПО

- Документы могут быть посланы через WWW, а не только через клиента
- Консолидированные отчеты
- Связи с другими группами разработчиков, бизнес-пользователями, начальством, клиентами и т. д.

Home - Tour Package Services v2.1 - Microsoft Internet Explorer

Address: http://adventureworks/sites/tourpackageservicesv2_1/default.aspx

Home Documents and Lists Create Site Settings Help

Tour Package Services v2.1
Home

Modify Shared Page

Documents
Project Management
Development
Test
Templates
Guidance
Reports
Work Items
Queries
Information Resources

Announcements

TPS v2.1 now ready for design! NEW 2/4/2004 5:18 PM
by Jesse Lim
Requirements defined and work scheduled for v2.1. Design ready to start. See http://adventureworks/tourpackageservices_v2_1/Project%20Management/Requirements/Requirements.xls for further details.

▣ Add new announcement

Project Schedule

February 2004

Sun	Mon	Tue	Wed	Thur	Fri	Sat
1	2	3	4	5	6	7
8	9	10	11	12	13	14
Iteration 1						
I1 Design Due			I1 Code Complete			
15	16	17	18	19	20	21
Iteration 1						

Links

- DirectX 9.0b Redistributable for Software Developers
- Microsoft XML Parser (MSXML) 3.0 Service Pack 4 (SP4)
- MSXML 4.0 Service Pack 2 (Microsoft XML Core Services)
- Windows Script 5.6 for Windows 2000 and XP
- DirectX 9.0 Software Development Kit with DirectX 9.0b Runtime

▣ Add new link

Project Management

Type Name Modified By

- Project Vision Document I new Amy Hagstrom
- Project Plans Frank Brisse
- Lifecycle Frank Brisse
- Requirements Frank Brisse
- Scenarios Frank Brisse
- Features Frank Brisse
- Others Frank Brisse

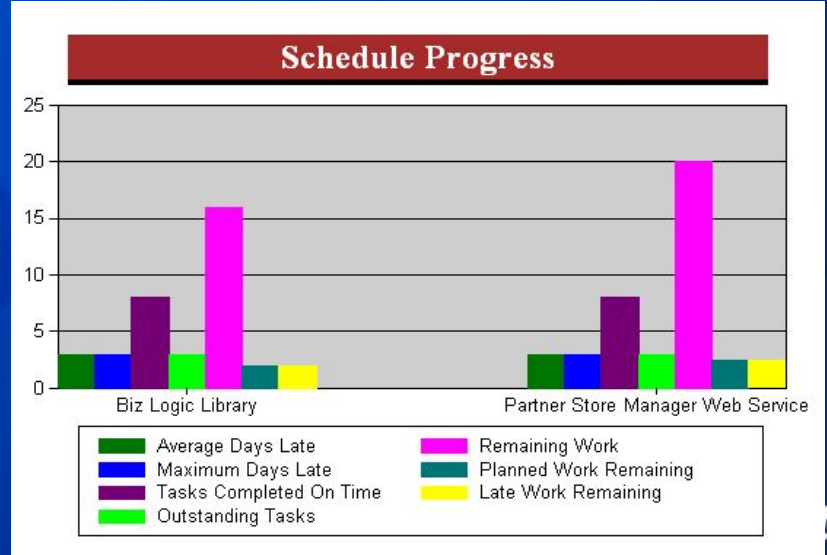
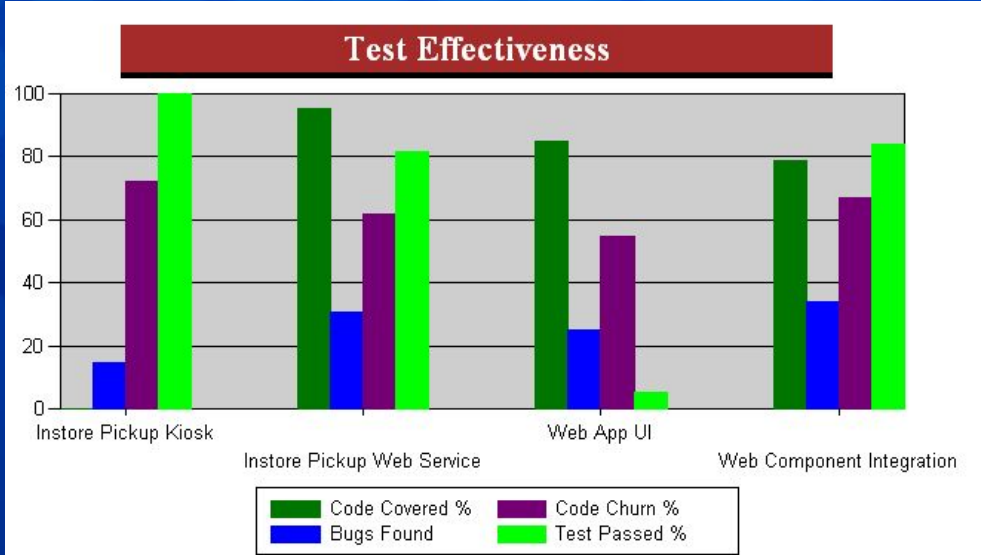
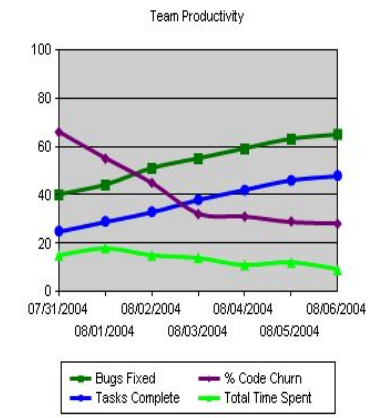
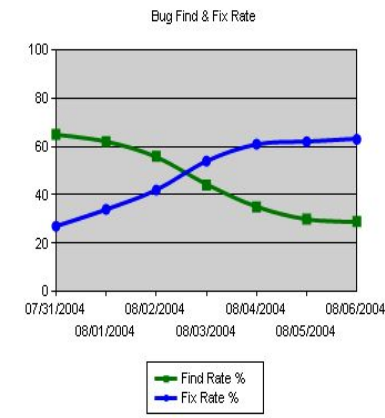
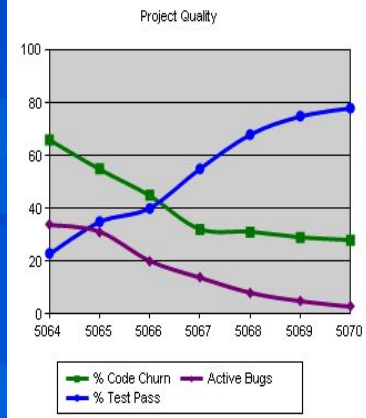
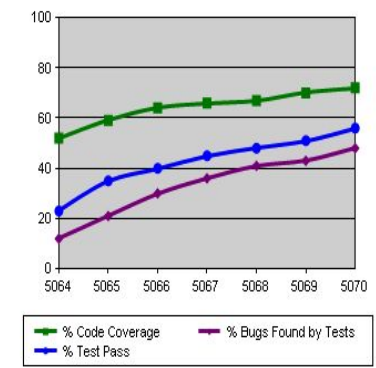
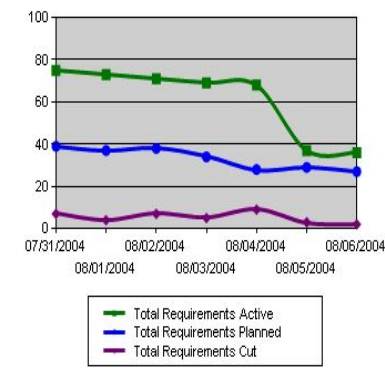
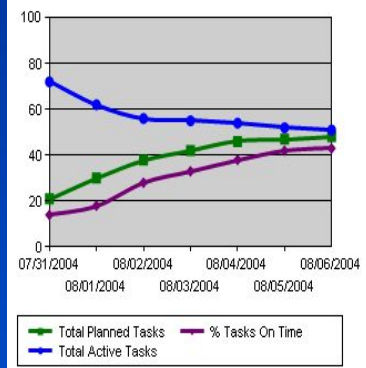
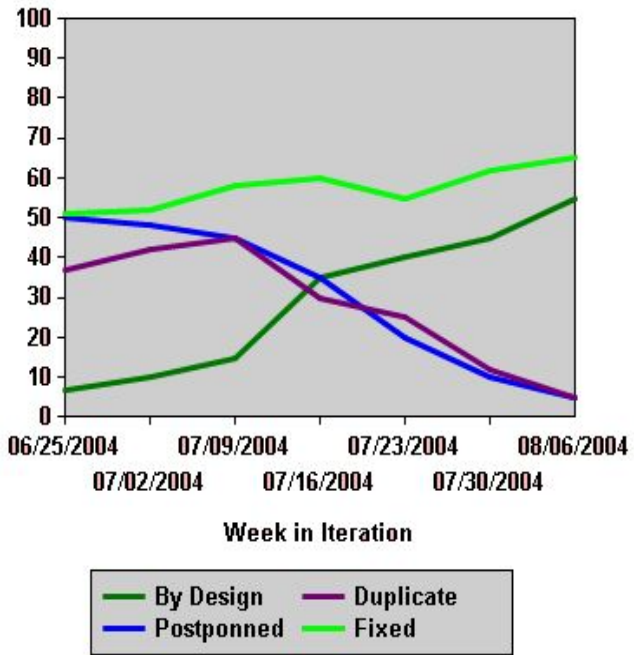
▣ Add new document

start Microsoft Developme... Information Resource... Trusted sites 2:54 PM

Польза для «непрограммистов»

- Отчеты (графические и текстовые) о состоянии проекта
- Механизм отчетов базируется на SQL Server 2005 Reporting Services
- Полностью заполненный информацией Data Warehouse и многомерный куб с поддержкой пивотных таблиц и запросов
- Интерфейс для работы через WWW

Отчеты

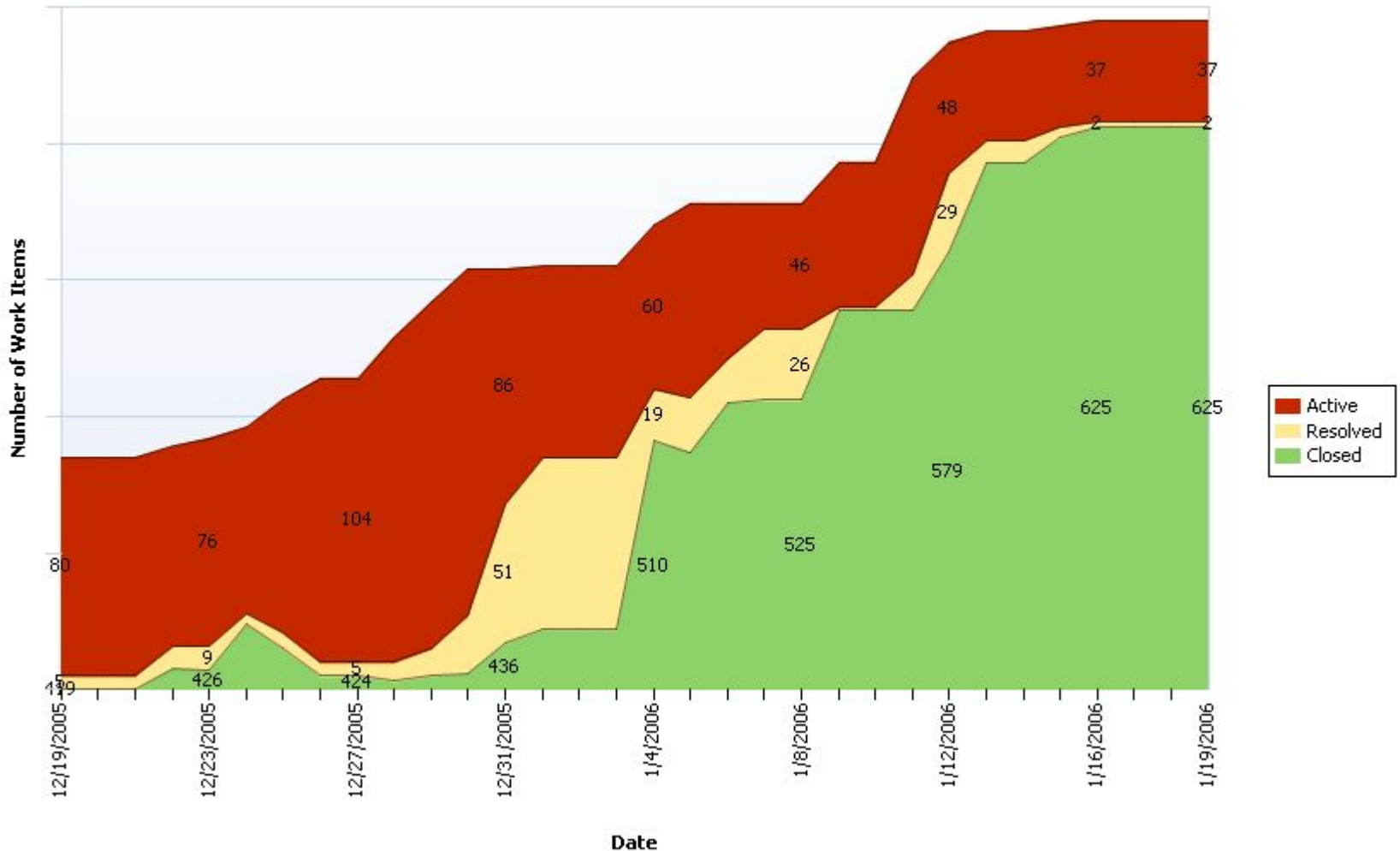


Незаконченная работа

Remaining Work

Report Generated: 1/19/2006 10:32:48 AM by REDMOND\tompat; Last Warehouse Update: 1/19/2006 9:49:52 AM

How much work is left and when will it be done?

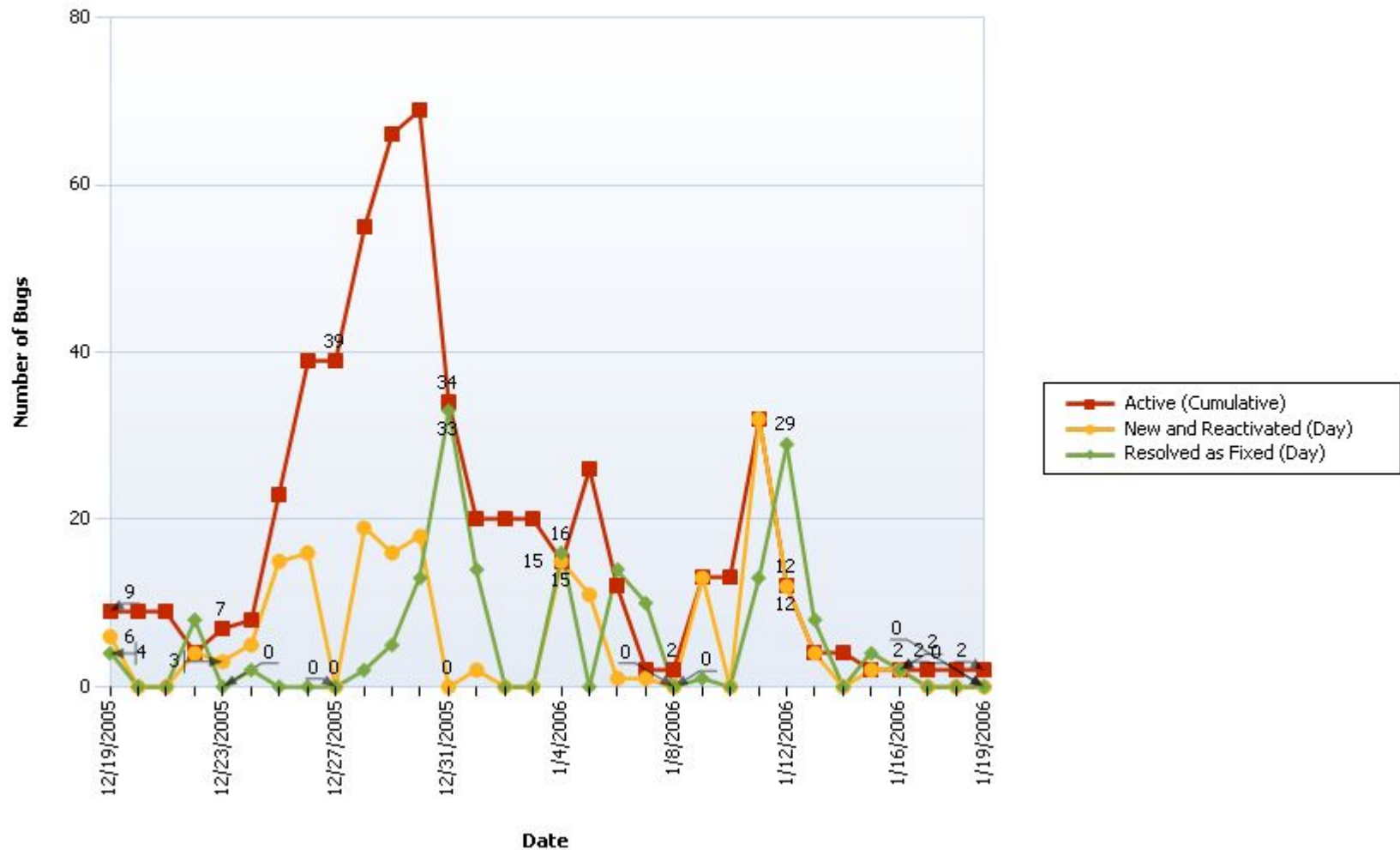


Баги

Bug Rates

Report Generated: 1/19/2006 10:08:04 AM by REDMOND\topat; Last Warehouse Update: 1/19/2006 9:49:52 AM

How effectively are we finding, fixing and closing bugs?

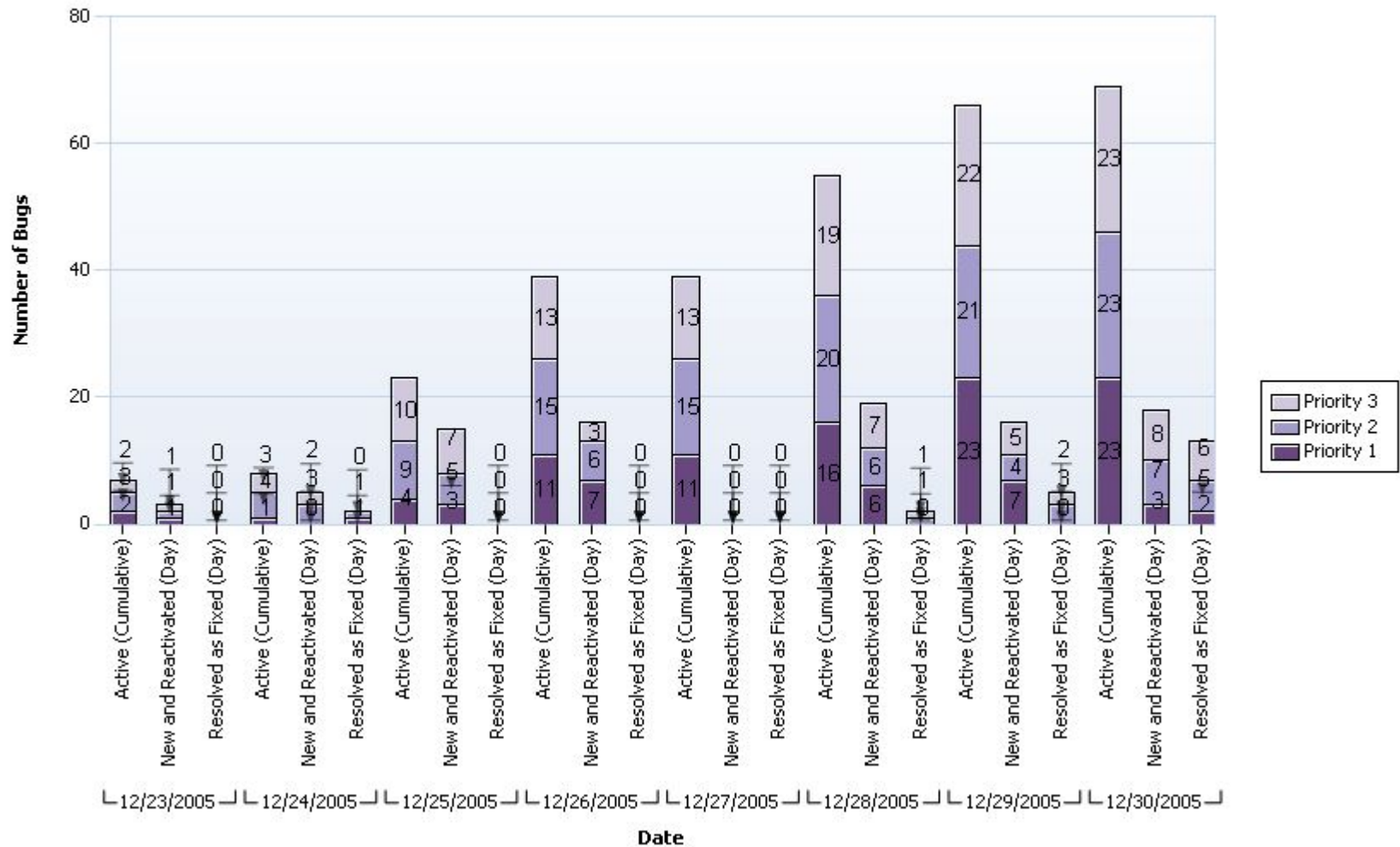


Баги по приоритету

Bugs by Priority

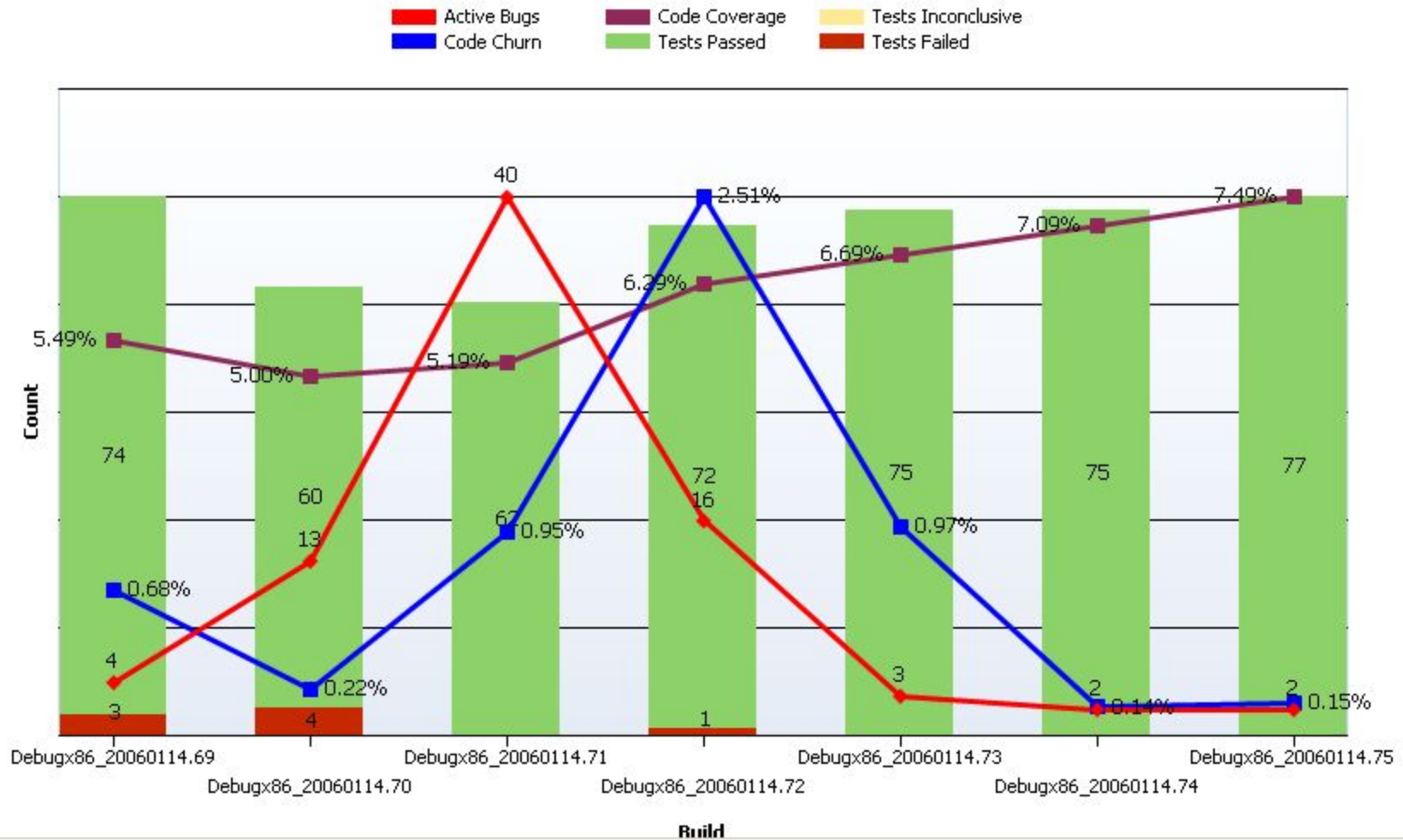
Report Generated: 1/19/2006 10:10:27 AM by REDMOND\{tompat; Last Warehouse Update: 1/19/2006 9:49:52 AM

Are we finding and triaging the right bugs?



Индикаторы Качества

What is the quality of the software?



Планирование внедрения

Группа	TFS Конфиг	Модель Сервера	CPU	Память	Диски
100	Single Server	Dell PowerEdge 1850	1 x 3.4Ghz	1GB	1 x 10k rpm SCSI
200	Single Server	Dell PowerEdge 1850	1 x 3.4Ghz	2GB	1 x 10k rpm SCSI
400	Single Server	Dell PowerEdge 1850	2 x 3.4Ghz	2GB	1 x 10k rpm SCSI
800	Dual Server	HP Proliant DL580 G2	AT: 1 x 2.8Ghz DT: 2 x 2.7Ghz	AT: 1GB DT: 4GB	12 x 15k SCSI Raid 0
2000	Dual Server	HP Proliant DL580 G2	AT: 1 x 2.8Ghz DT: 4 x 2.7Ghz	AT: 1GB DT: 16GB	12 x 15k SCSI Raid 0
3500	Dual Server	Dell PowerEdge 1850 Unisys ES7000/600	AT: 2 x 2.8Ghz DT: 8 x 2.8Ghz	AT: 4GB DT: 32GB	XIOtech SAN (2TB, RAID 10)

Source: <http://blogs.msdn.com/bharry/archive/2006/01/04/509314.aspx>

Questions



Sergiy.Baydachnyy@microsoft.com

Microsoft[®]

Your potential. Our passion.[™]

© 2007 Microsoft Corporation. All rights reserved.
This presentation is for informational purposes only. Microsoft makes no warranties, express or implied, in this summary.

Microsoft