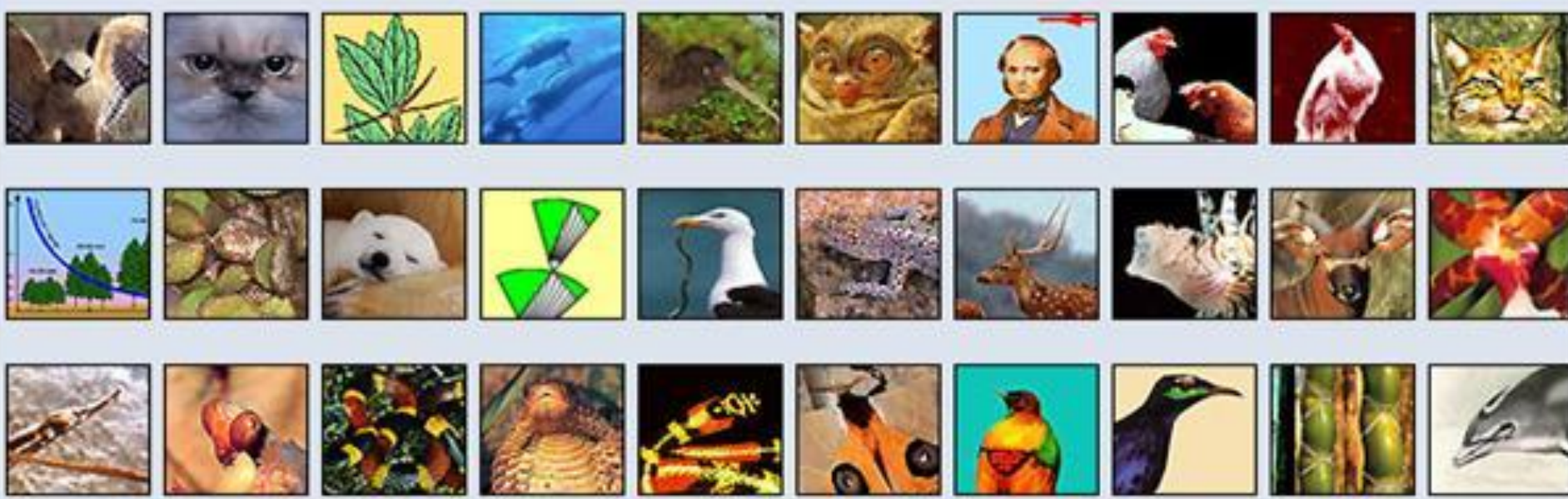
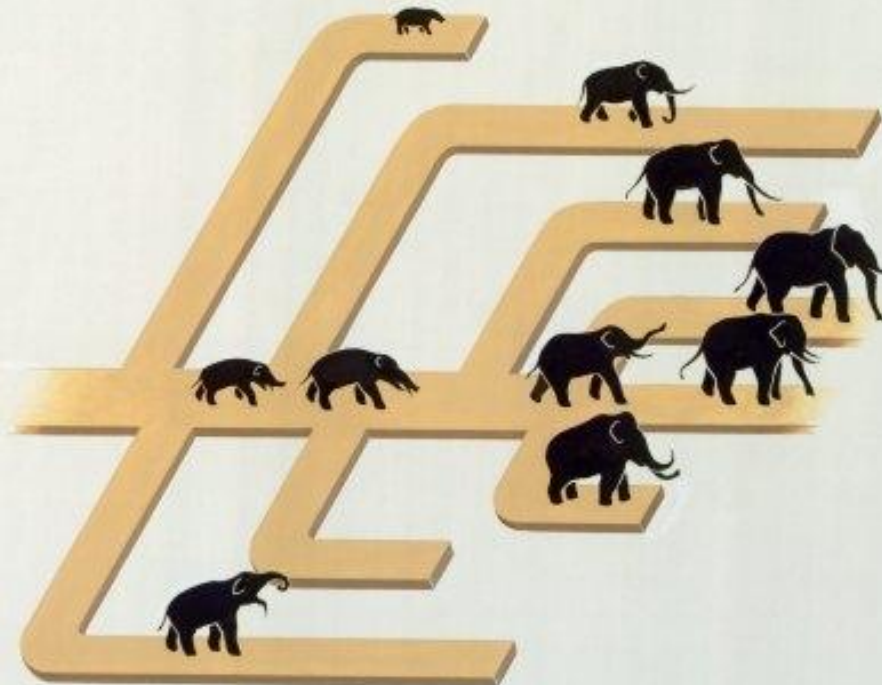




# РАЗВИТИЕ БИОЛОГИИ В ДОДАРВИНОВСКИЙ ПЕРИОД



**Эволюция – историческое необратимое и направленное развитие живой природы, сопровождающееся образованием новых видов и прогрессивным усложнением форм жизни.**

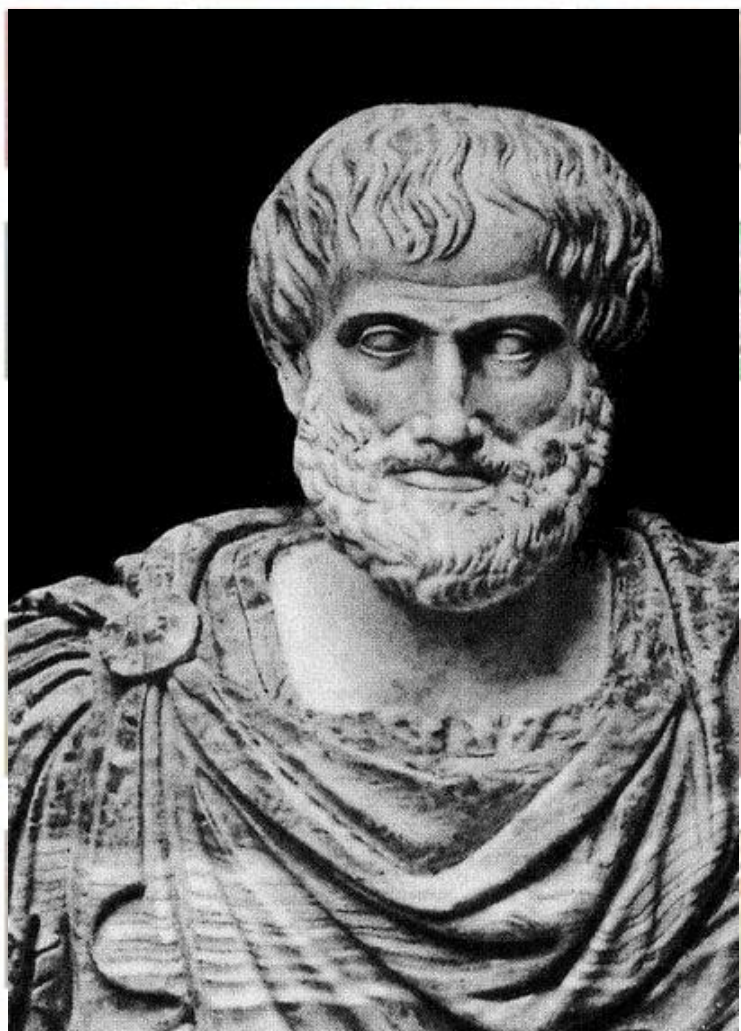


**Результатом эволюции является все многообразие живых организмов на Земле.**



# Аристотель

(384 – 322 гг. до н.э.)





КАРЛ  
ЛИННЕЙ



Философия  
ботаники

CAROLI LINNÆ  
EQUITIS DE STELLA POLARI,  
ARCHIATRI REGIS, MED. & BOYAN. PROFESS.  
ACAD. UPSAL. HOLMENS. PETROPOL. BEROL.  
LOND. MONSPEL. TOLOS. FLORENT. SO

**SYSTEMA  
NATURÆ**

PER  
REGNA TRIA NATURÆ,  
SECUNDUM  
CLASSES, ORDINES,  
GENERA, SPECIES,  
CUM  
CHARACTERIBUS, DIFFERENTIIS,  
SYNONYMIS, LOCIS.

TOMUS I.

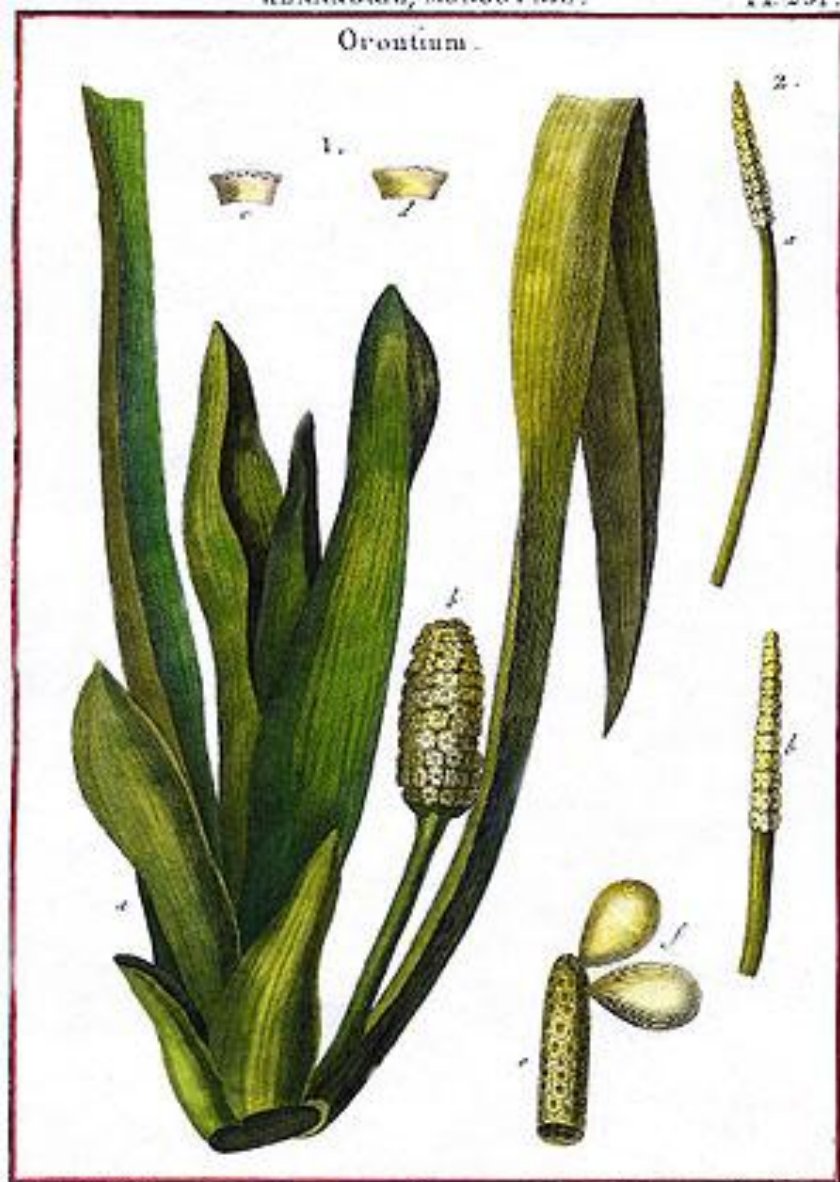
EDITIO DECIMA, REFORMATA.

Cum Privilegio Sæc Ræ Mæis Sveciæ.

HOLMIÆ,  
IMPENSIS DIRECT. LAURENTII SALVII,  
1758.



Orontium.

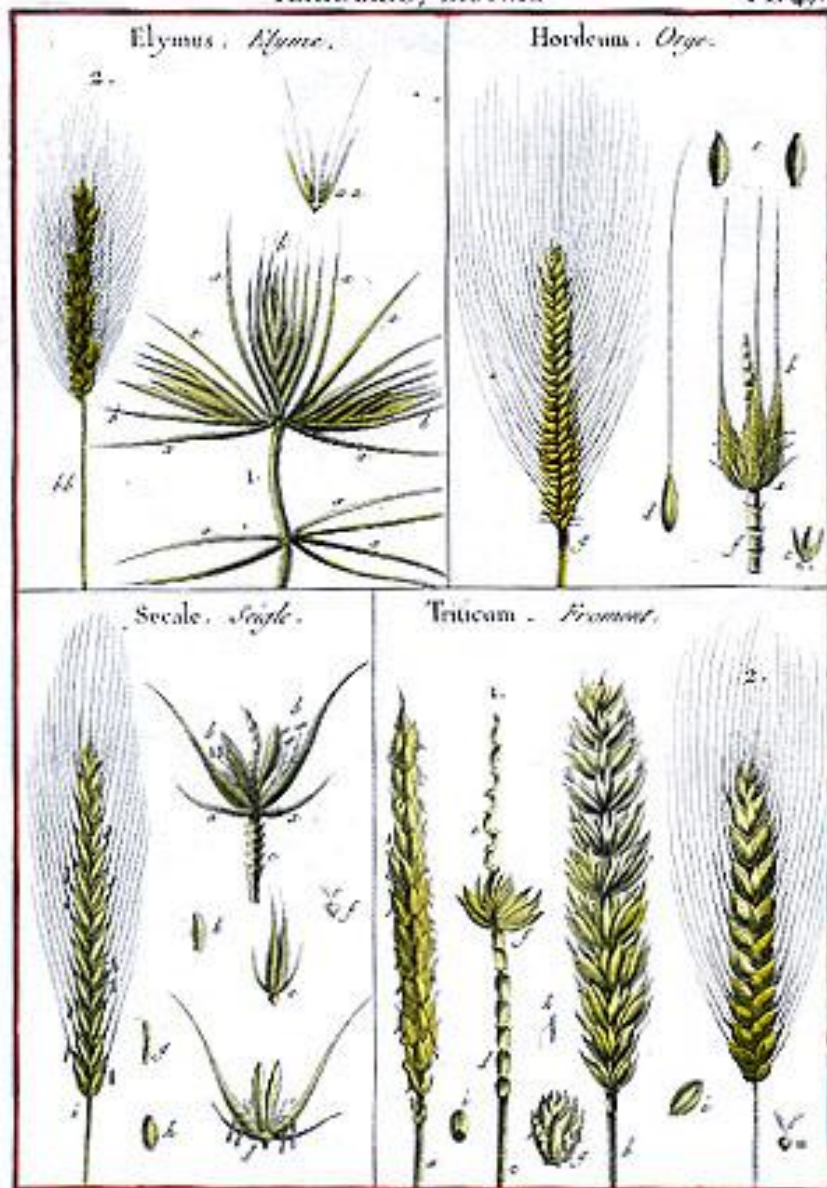


J. B. de Saxe del.

Bonard fecit.

Elymus. Avoine.

Hordeum. Orge.



J. B. de Saxe del.

Bonard fecit.

HEXANDRIE ; MONOGYNIE.

Pl. 257.

Hillia.



Coutarea.



HISTOIRE NATURELLE, Botanique.

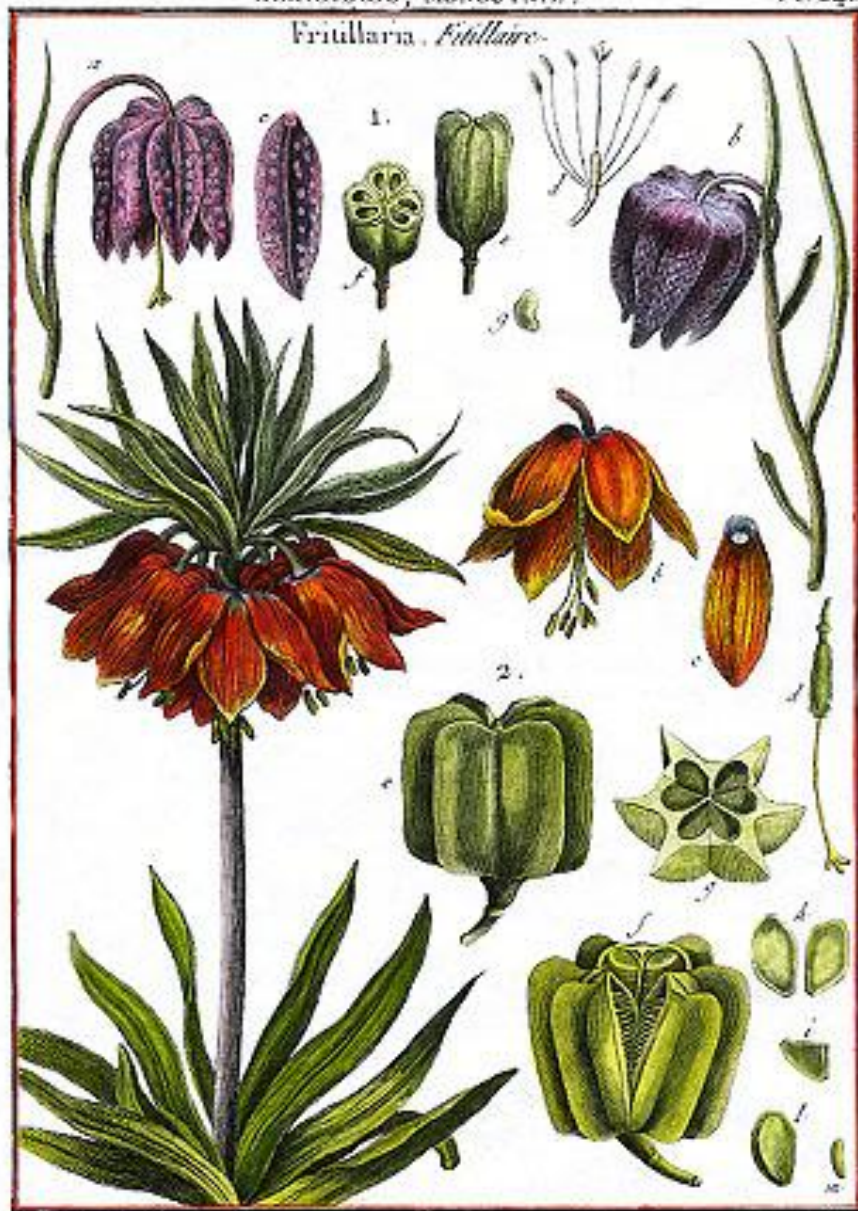
DÉCANDRIE ; MONOGYNIE.

Pl. 358.

Ekebergia. Ekeberg.



HISTOIRE NATURELLE, Botanique.

*Fritillaria, Fritillaire.*

F. Goussier del.

Bernard Bonnet

*Tropaeolum, Capucine.*

M. J. Poncelet del.

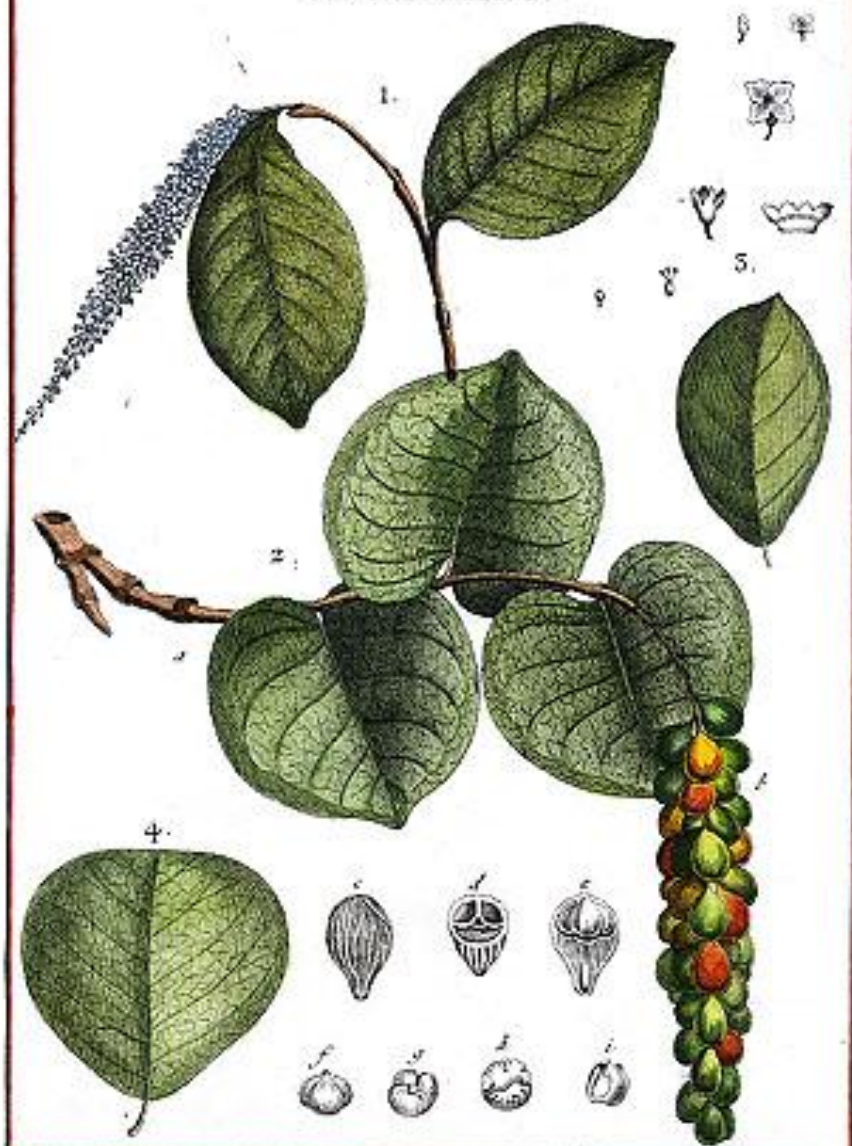
Bernard Bonnet.



*Gladiolus . Clavus .*

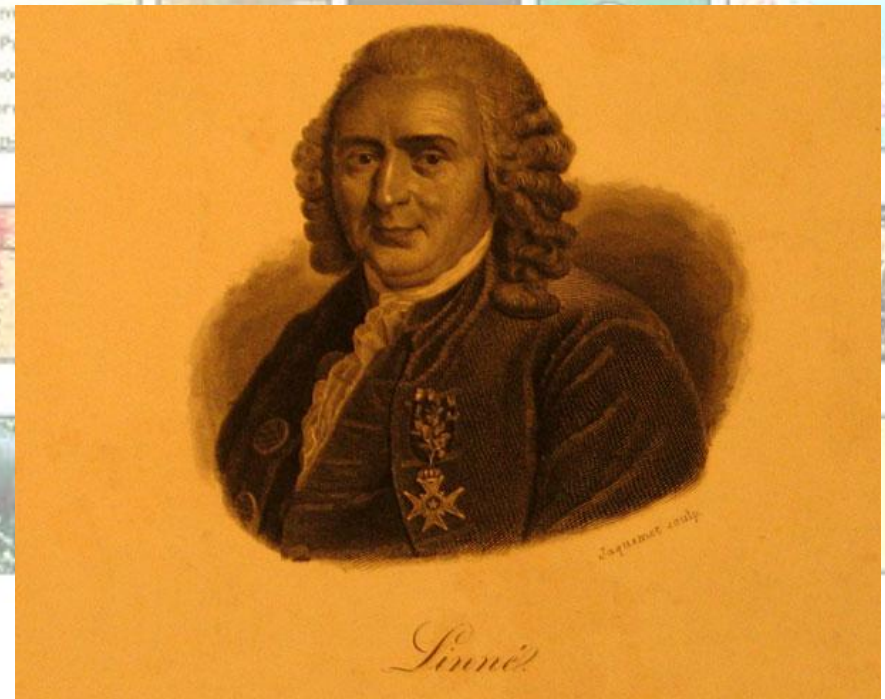


*Coccoloba . Raisin .*





LINNAEUS IN HIS LAPPLAND DRESS.  
As he appeared when he left Uppsala in 1732.



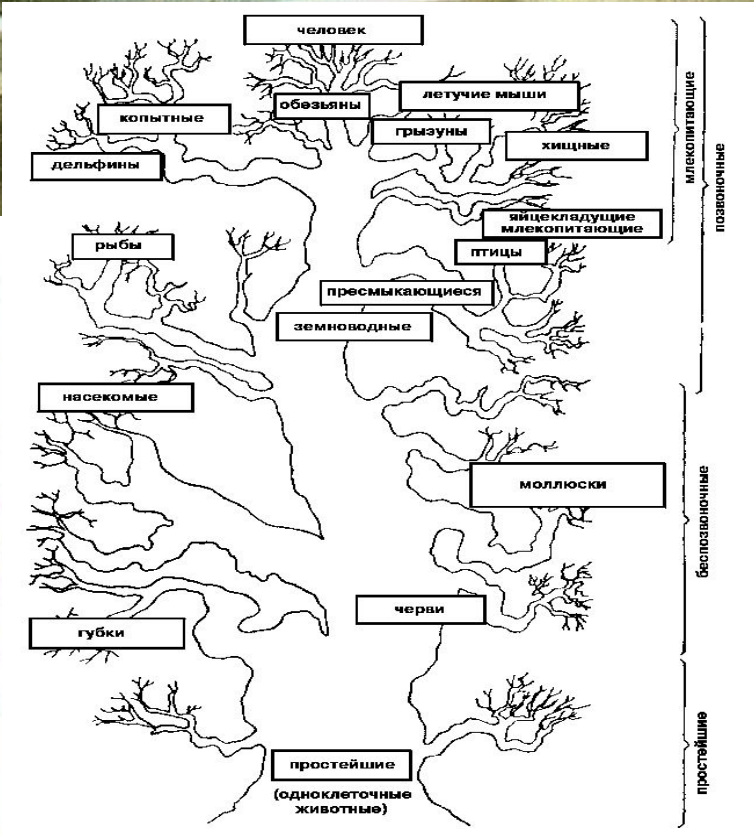
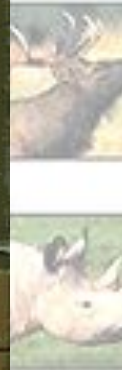
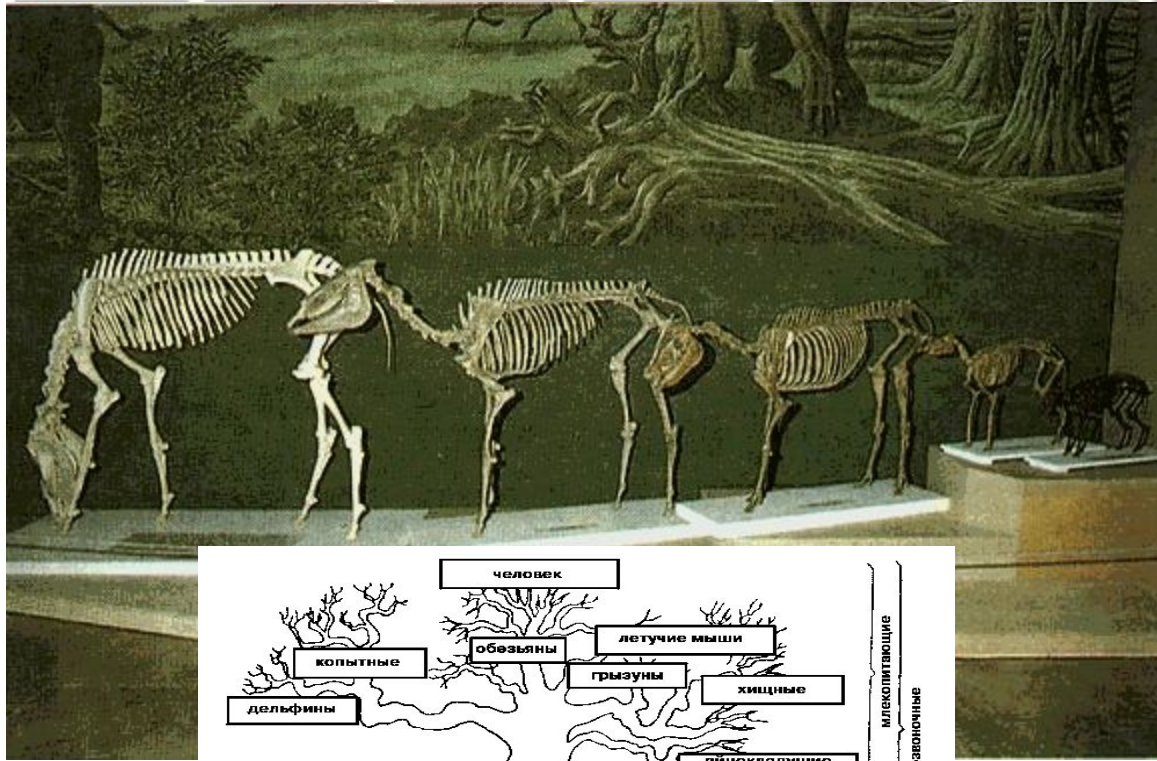
Linnaeus



# Жан Батист Ламарк

(1744 – 1829)





**БИОЛОГИЯ**

