

The background of the slide is a close-up photograph of several vibrant red maple leaves. The leaves are in various stages of fall, with some showing a mix of red and orange. They are set against a soft, out-of-focus green background, likely other foliage. The lighting is bright, highlighting the intricate vein structure of the leaves.

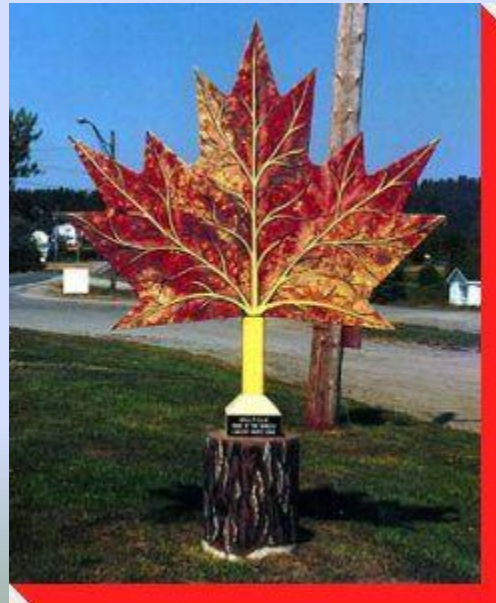
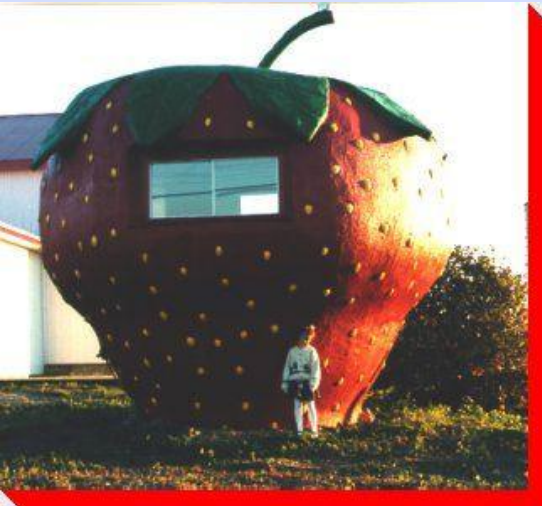
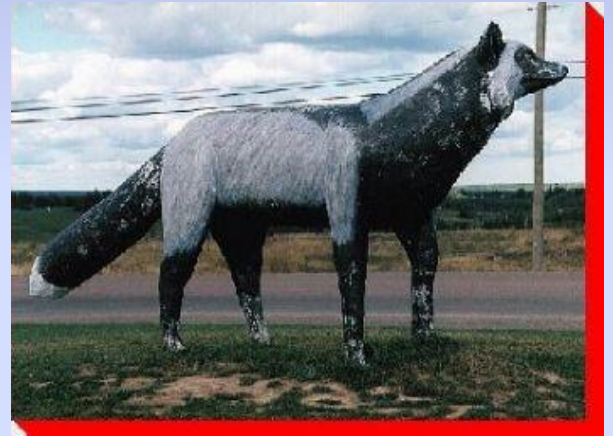
Canadian Tourist Attractions

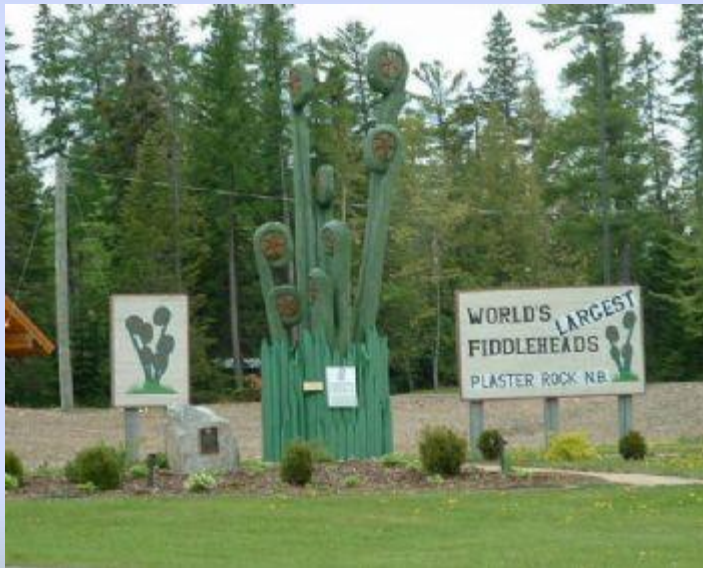
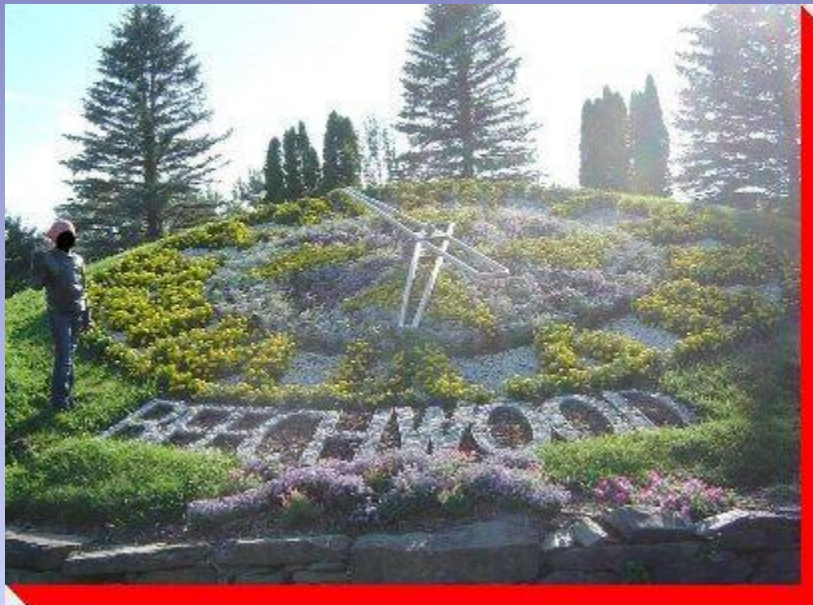
8Q and 8N Student collaboration
Featuring work from Jack S, Brandon C,
Alisha L, Olivia T, Lesley B, Laura A,
Mahala M, and Marci

World's largest

Here in the mighty Atlantic province of N.B we are home to many wonderful attractions, in our province of New Brunswick we have several of the largest objects on the planet. These range from the giant axe of Nackawic to the longest covered bridge, in Hartland. We also have the largest maple leaf, which is one of our lesser structures.

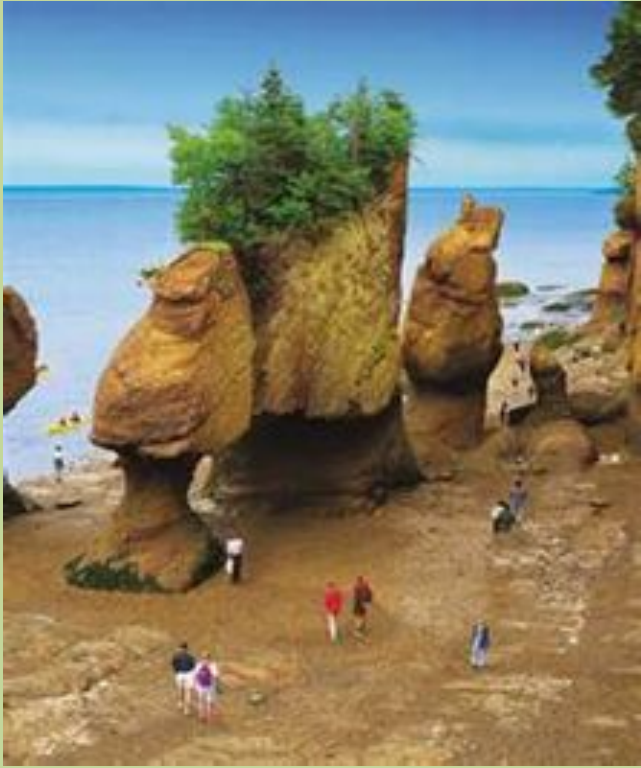






New Brunswick Tourism





The Hopewell Rocks

The Hopewell Rocks are rock formations which have been eroded at their base over time by the ocean, causing intricate formations. These unusual rocks are located in Hopewell Cape, near Moncton.

Rising beautifully at the western side of the province, near Chaleur Bay, the Appalachians are a world of their own, frozen in time, filled with natural beauty. You'll be in shock by just how untouched it is. You can canoe the wonderful lakes and rivers that surround the mountains, or hike the pristine trails that take you to inspiring lookouts .



Appalachian range

Fundy National Park

Fundy National Park was New Brunswick's first national park, created in 1948. It has hiking trails covering 120 kilometers of unspoiled land. There is even a chance to create coastal art. It makes for the perfect family vacation destination.

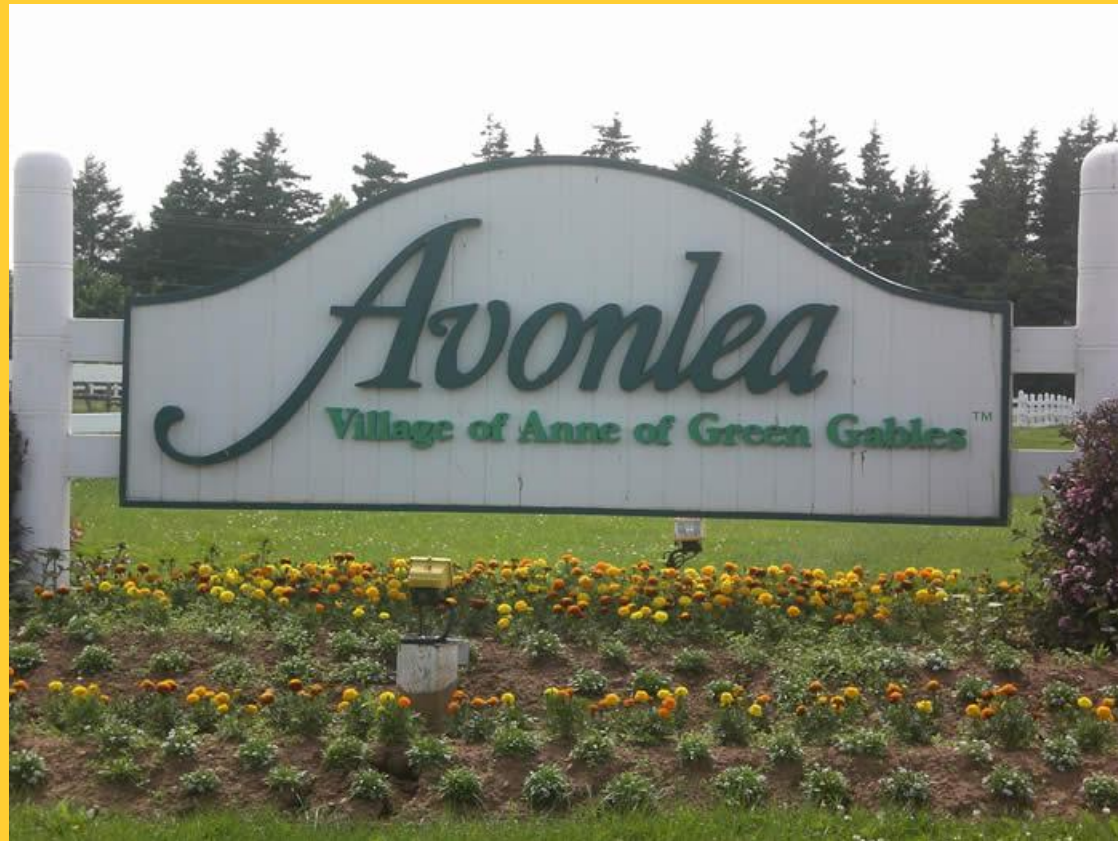


Parlee Beach

This beach includes sugar-white sand and the warmest waters in Canada, plus tons of recreational activities and plenty of lively Acadian spirit. It also boasts the World's Largest Lobster, in sculpture form of course. Families come from all over to enjoy the beautiful waters.



Avonlea Village



Traditional music kitchen parties, Square and step dancing lessons, Horse and wagon rides, Barn yard animals and pig race, Kids craft studio, Games and activities, school like 1908, Puppet and music shows

St. Andrews



The establishment of Saint Andrews began in 1140. By the 19th century, the town began to expand beyond the original medieval boundaries with streets of new houses and town villas being built. It was founded in 1783 and became an incorporated town in 1903.