

# How to find the perfect tool

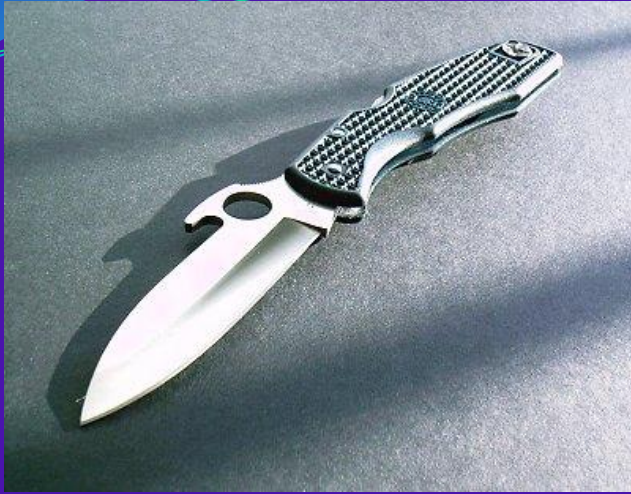
## Survival or multi-tool?



**What are their differences?**

**A multi -tool has got...**





**KNIFE BLADE**



**SAW**



**BOTTLE OPENER**



**CAN OPENER**



**HAMMER**



**PLIERS**

**A survival tool has got...**





**KNIFE BLADE**



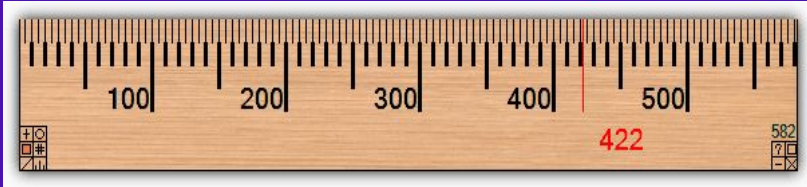
**SCREWDRIVER**



**BOTTLE OPENER**



**CAN OPENER**



**RULER**



**PICK**

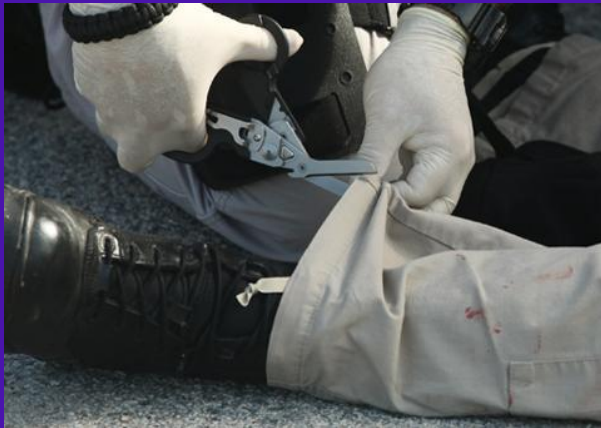


**WRENCH**



**SCISSORS**

# What can you do with these tools?





# New multi-tools

