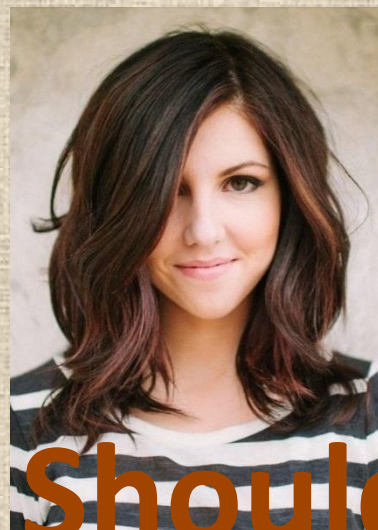


# Appearance

## Vocabulary

# HAIR



**loose**

**Shoulder-length**



**ponytail**



**plait**



**braids**



# HAIR



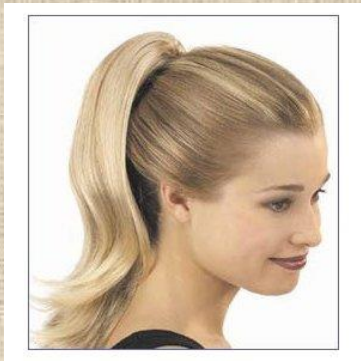
straight



curly



wavy



fair



dark



red

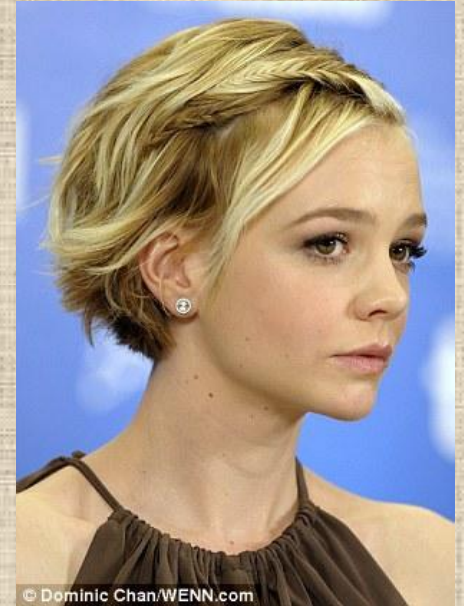


bald

# NOSE



**straight**



**turned-up**



**pointed**



# EYEBROWS

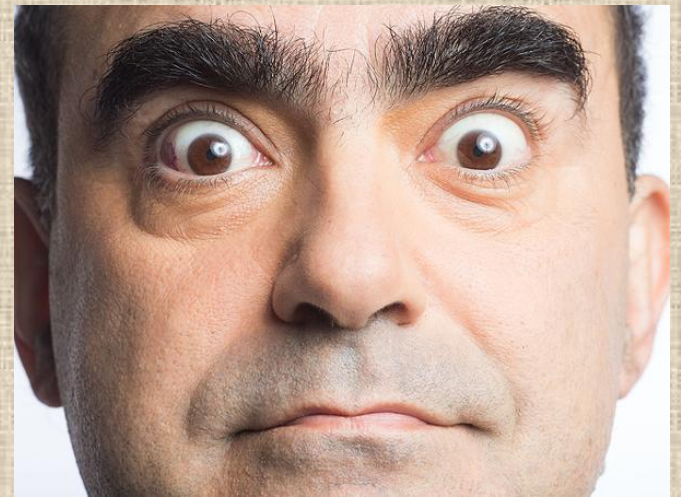
**thin**



**thick**



**bushy**





**narrow**

**EYES**

**round**



**eyelashes**



**almond-  
shaped**

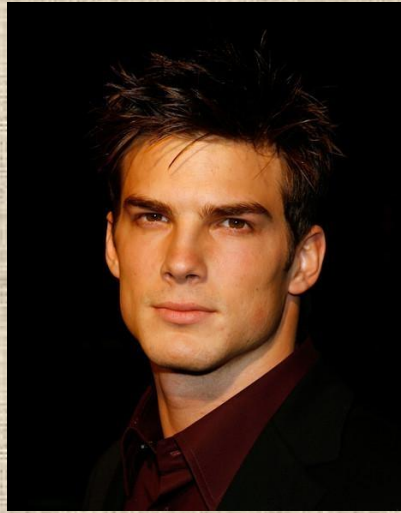




# CHIN



**round**



**square**



**with a dimple**

**moustache**

**beard**





**+ plump**

**stout**

**thin**

**slim**

**skinny**