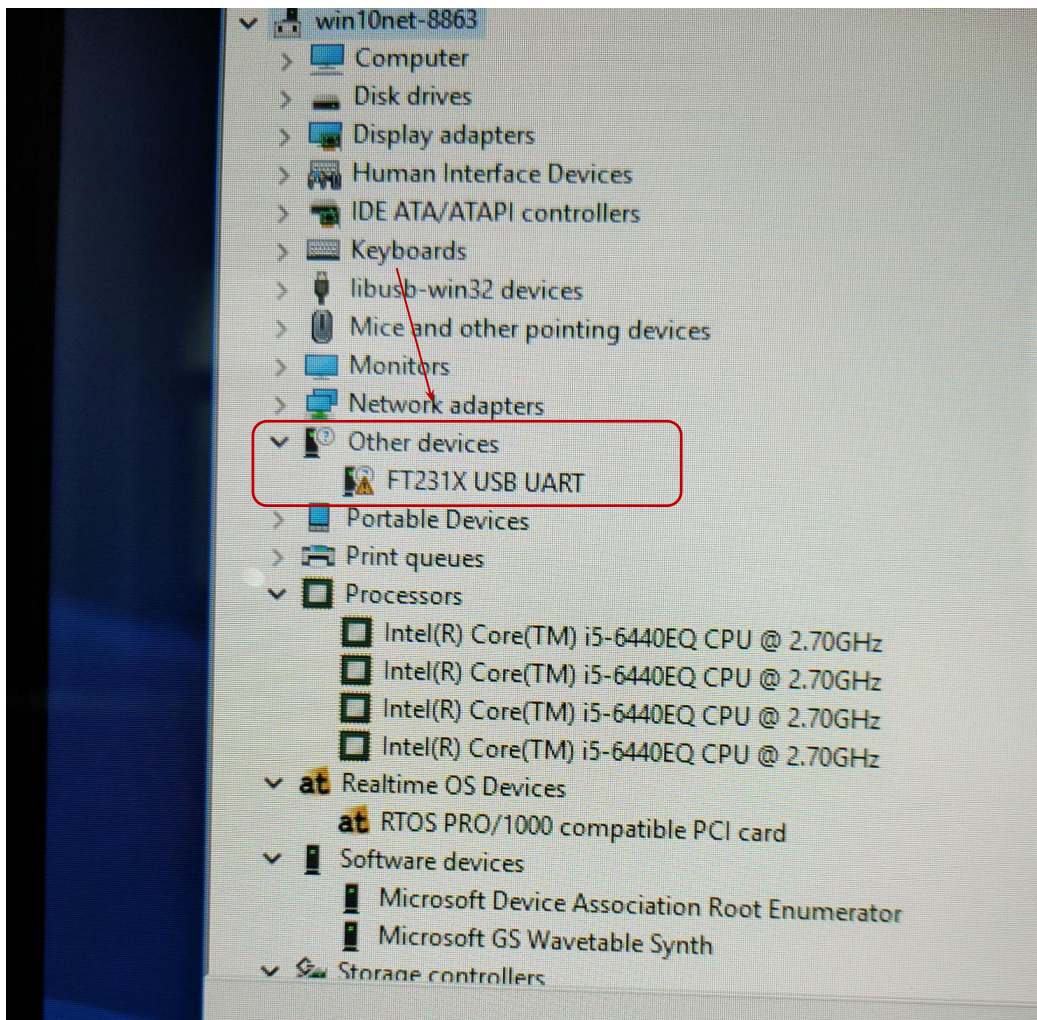


1_锐科激光器注册码解锁 与失败操作步骤

一般情况下，有红光没激光，激光器上的报警灯没有亮，在这种情况下，打开激光器监控软件，看锁定时间是否到期

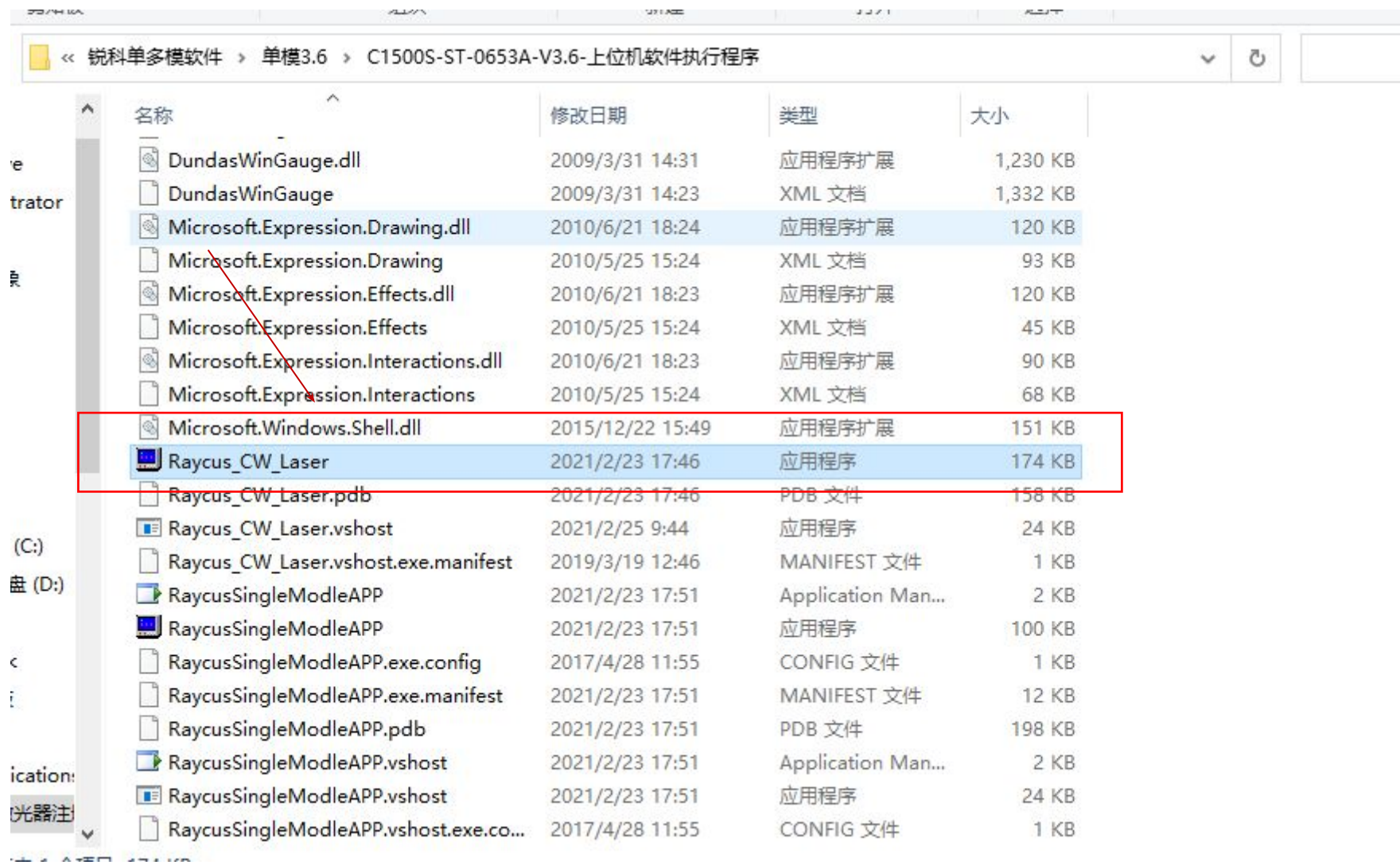
步骤一：连好激光器的RS232到电脑USB上，如果第一次连，在电脑的设备管理器中，如1-1图中出现感叹号，RS232就需要驱动安装



步骤二：安装RS232转USB驱动程序，路径如下



步骤三：单模打开，路径



Serial Port:

English

- SysInfo
- Emission
- Laser Status
- Laser monitor
- System Set
- LaserPower Set
- Protect Enable
- Read AlarmRecord

System Time Set
Time: Y M D H M S

MCU ID:

Secret Key:

8bytes Password:

Factory reset Passw:

Factory Mode
2000 Y 00 M 00 D

Dynamic Cc:

Raycus License:

License Time:

IP
ADDRESS:
MASK:
GATEWAY:

Timed Lock
Locked Time: Y M D

Laser SN:

8bytes Lock Password:

Encrypted License:

PowerOnTime(S):

EmissionTime(S):

Slow Rise & Slow Fall
RiseTime(ms): FallTime(ms):

通过连接正确串口，读取激光器信息，读取锁机时间，如是下图所示就是永久的，不用解。如不是请对比中国时间，确定是否需要解。如需要解，请联系我们

Timed Lock
Locked Time
2000 Y 0 M 0 D

正确步骤如下

The screenshot shows the 'SingleMode Fiber Laser Application V3.6' software interface. At the top, there are fields for 'Serial' (step 1), 'Get Port' (step 2), 'Open Port' (step 3), and 'Close Port'. Below this is a menu bar with options like 'SysInfo', 'Emission', 'Laser Status', 'Laser monitor', 'System Set', 'LaserPower Set', 'Protect Enable' (step 4), and 'Read AlarmRecord'. The main area contains various configuration sections: 'MCU ID', 'Secret Key', 'Read SN', '8bytes Password' (with value 1122334455667788), 'Check Password', 'Set New Password', 'System Time Set' (with Y, M, D, H, M, S fields), 'Get Computer Time', 'Get Laser Time', 'Set Laser Time', 'Factory reset Passw', 'Factory reset', 'Factory Mode' (with 2000 Y, 00 M, 00 D), 'Set to User Mode', 'Dynamic Cc', 'Get License Code' (step 8), 'IP' (with ADDRESS, MASK, GATEWAY fields and Set/Get buttons), 'Raycus License' (step 7), 'Check License', 'License Time', 'Get License Time', 'Timed Lock' (with Locked Time fields: 2000 Y, 0 M, 0 D), 'Laser SN' (with value 12345678, step 10), 'Read SN' (step 9), 'Set Password' (step 5), 'Read Locked Time', '8bytes Lock Password', 'Encrypted License', 'PowerOnTime(S)', 'EmissionTime(S)', 'Set New PowerOn Time', 'Clear Poweron Time', 'Get License', 'Set Locked Time', 'Slow Rise & Slow Fall' (with RiseTime and FallTime fields and Get/Set buttons). At the bottom left, it says 'Program is running'.

把下图中字母和数字不要破折号填入7处，点击8处

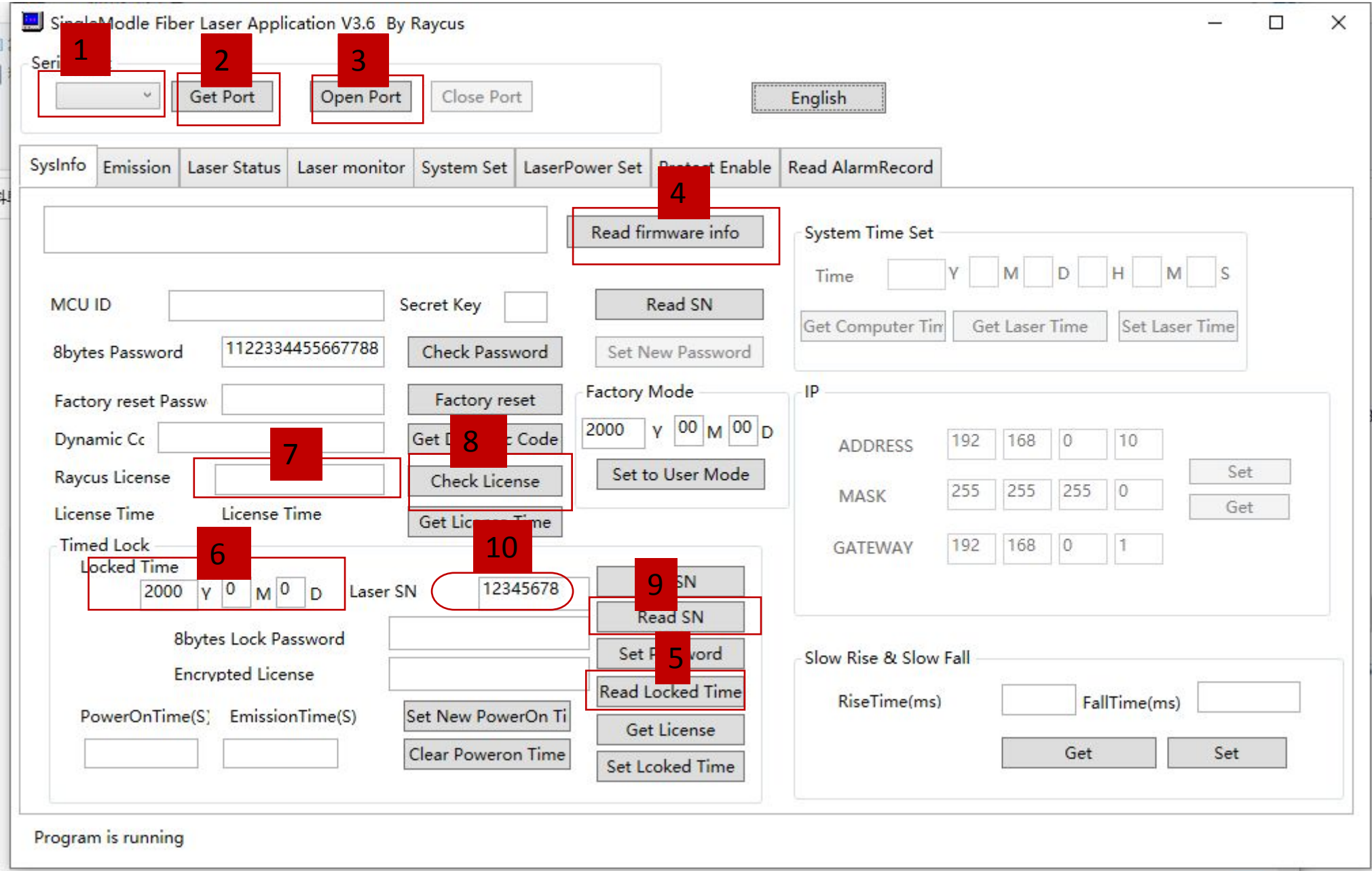
日期: 2000-00-00

无限期

发送

返回 FC07-CDAF-A671-FE1D

如果注册失败，点击9，把10处读到的数字反馈给我们



多模路径如下

多模解锁软件 > C3kW~15kW-ST-V2.5_上位机应用程序20210224 > 3~15KW上位机客户版2.5

名称	修改日期	类型	大小
DundasWinGauge.dll	2009/3/31 14:31	应用程序扩展	1,230 KB
DundasWinGauge	2009/3/31 14:23	XML 文档	1,332 KB
Raycus_CW_Laser.vshost	2017/9/20 9:41	应用程序	24 KB
Raycus_CW_Laser.vshost.exe.config	2016/12/8 10:44	CONFIG 文件	1 KB
Raycus_CW_Laser.vshost.exe.manifest	2013/3/18 17:00	MANIFEST 文件	1 KB
Raycus_CW_Laser_Debug	2021/2/25 10:35	应用程序	205 KB
Raycus_CW_Laser_Debug.exe.config	2016/12/8 10:44	CONFIG 文件	1 KB
Raycus_CW_Laser_Debug.pdb	2021/2/25 10:35	PDB 文件	194 KB
Raycus_CW_Laser_Debug.vshost	2021/3/2 9:24	应用程序	23 KB
Raycus_CW_Laser_Debug.vshost.exe.c...	2016/12/8 10:44	CONFIG 文件	1 KB
Raycus_CW_Laser_Debug.vshost.exe....	2015/10/22 9:54	MANIFEST 文件	1 KB

COM Setting

COM Setting controls including a dropdown menu, a blue "Get COM" button, and "OPEN" and "CLOSE" buttons.

Software ver

Software version control including a dropdown menu and a "VersionSet" button.

Resistance settir

Resistance setting control including a dropdown menu and "Set" and "Read" buttons.

Humidity/Dev

Humidity/Dev control including a dropdown menu and "Set" and "Read" buttons.

Language

Language selection controls with radio buttons for "简体中文" and "English".

QD Set Param	Power Correction	AD and Morniring Setting	Protection Enable	Alarm Data
System Info	Beam Control	Laser Status	Emission Monitoring	Laser Setting

Empty text input field for system information.

Info Acquisition

Time Setting

Time Y M D H M S

PCTime LaserTime LaserTime Setting

Serial No Key No Serial No Acquisition

8 bytes password Password Checking New Password Setting

Reset to Original Reset

Laser Dynamic Code Get dynamic code

出厂模式

年 月 日

Factory model

Laser registration Year Month Day Get registration time

Laser Registration Issue of registration key

Usage Duration

TimeLimit Y M D Laser Serial Compute locked

8 Bytes Term Code Lock

Locking Keyword Serial No Setting

Serial No Acquisition

Term Code Setting

TimeLimit Acquisition

把下图中字母和数字不要破折号填入1处，点击2处

日期: 2000-00-00

无限期

发送

返回 FC07-CDAF-A671-FE1D

如果注册失败，请点击1处，把读到的信息反馈给我们

