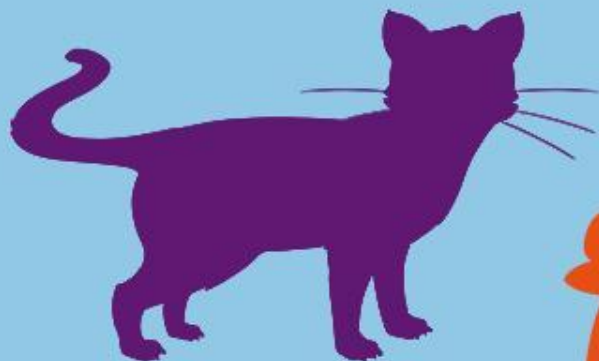
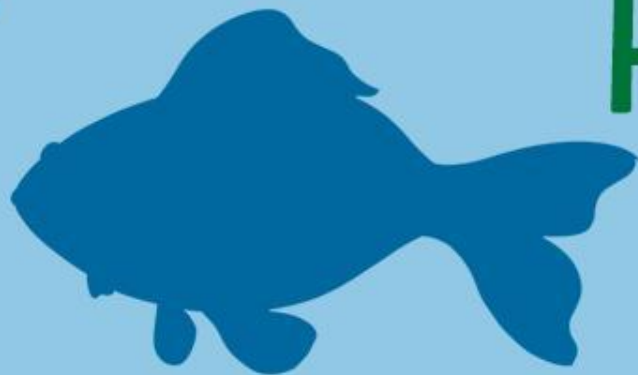


What Am I?

Pets



twinkl

What Am I?

Can you follow the clues to work out which pet is being described?



Click on the paw prints to reveal each clue!

Start



What Am I?



I have four legs.



I like to go for walks.



I bark.



What am I?

I am a dog!



Click to
reveal
the answer.

Previous

Next

What Am I?



I have long hair.



I have hooves.



I gallop.



What am I?

I am a
horse!



Click to
reveal
the answer.

Previous

Next

What Am I?



I move very slowly.



I eat fruits and vegetables.



I have a hard shell.



What am I?

I am a
tortoise!



Click to
reveal
the answer.

Previous

Next

What Am I?



I have whiskers.



I have sharp claws.

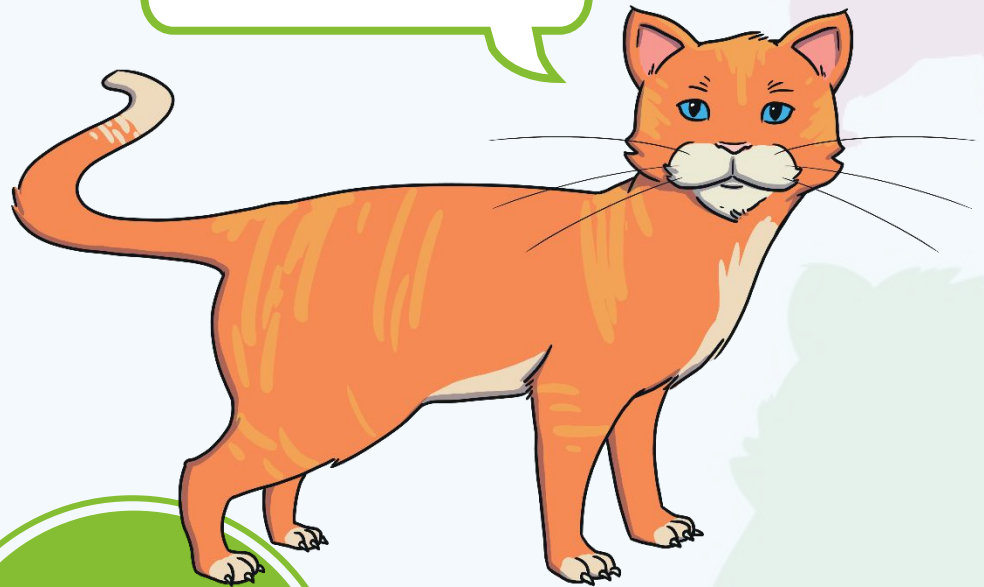


I purr.



What am I?

I am a cat!



Click to
reveal
the answer.

Previous

Next

What Am I?



I have scales.



I have fins.

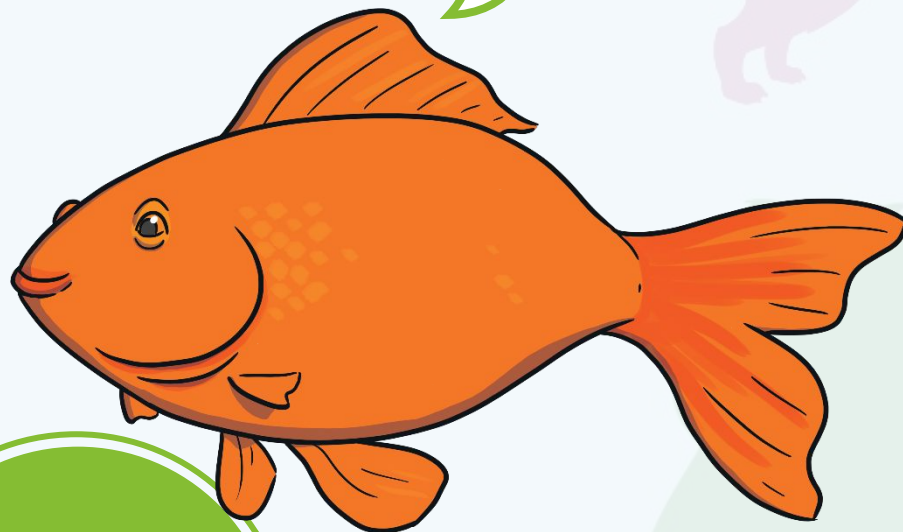


I live in water.



What am I?

I am a
goldfish!



Click to
reveal
the answer.

Previous

Next

What Am I?



I have a long tail.



I am very fast.

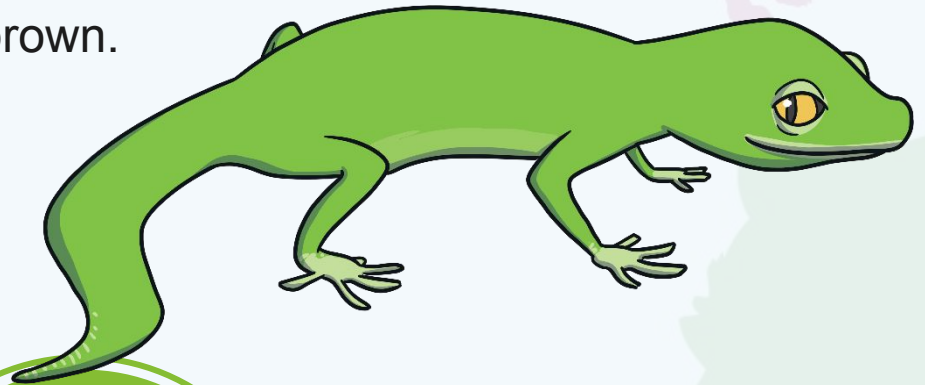


I am usually green or brown.



What am I?

I am a
lizard!



Click to
reveal
the answer.

Previous

Next

What Am I?



I can be very colourful.



I can talk.



I have wings.



What am I?

I am a
parrot!



Click to
reveal
the answer.

Previous

Next

What Am I?



I squeak.



I eat hay.

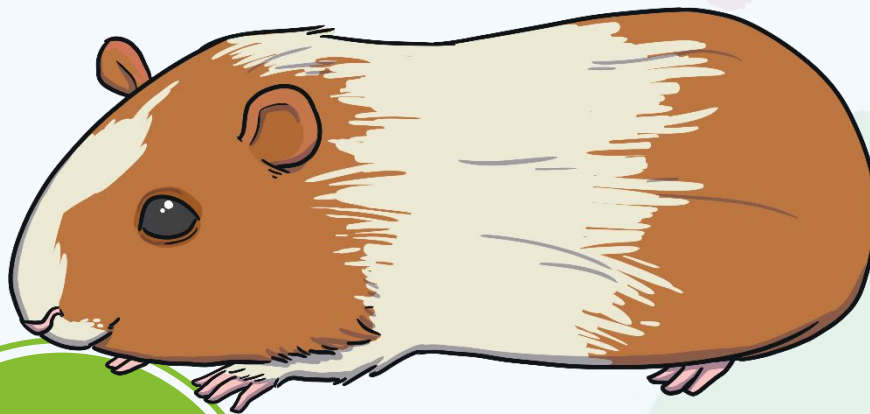


I live in a hutch.



What am I?

I am a
guinea pig!



Click to
reveal
the answer.

Previous

Next

What Am I?



I have a long tongue.



I have no legs.

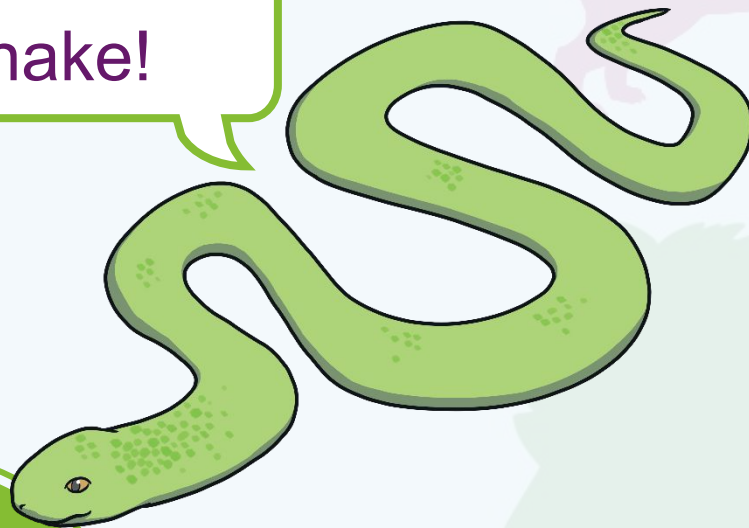


I have scales.



What am I?

I am a
snake!



Click to
reveal
the answer.

Previous

Next

What Am I?



I have big ears.



I eat carrots.

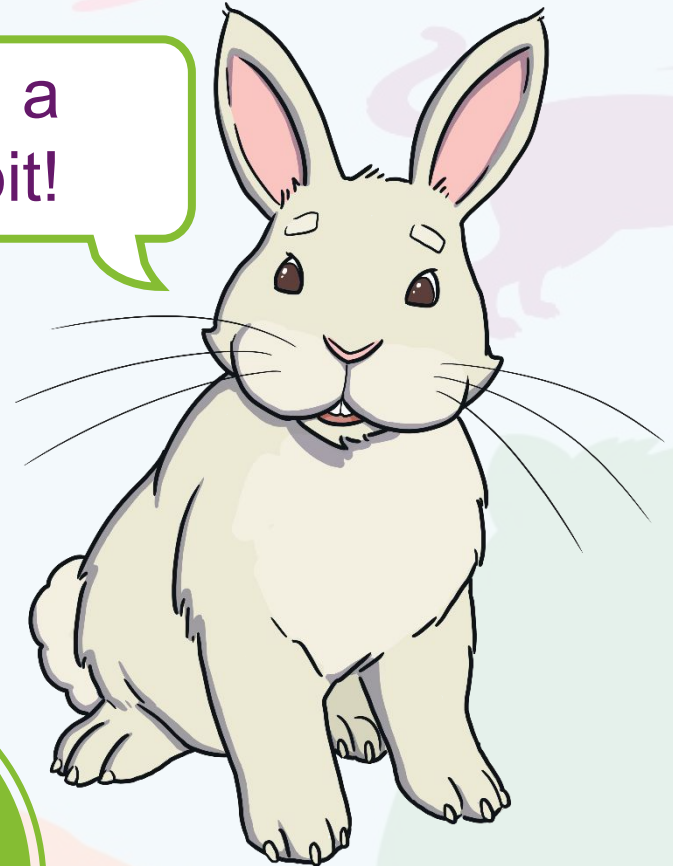


I have a fluffy tail.



What am I?

I am a
rabbit!



Click to
reveal
the answer.

Previous

End



twinkl