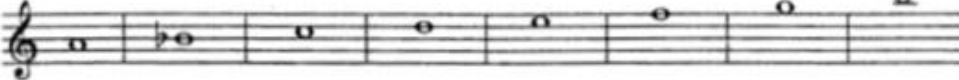


Си ♭ До Ре Ми Фа Соль Си



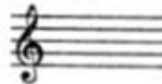
A a B b C c D d E e F f G g H h
[а] [бэ] [цэ] [дэ] [е] [эф] [гэ] [ха]

Мажор = *dur*
Минор = *moll*

Диез = *is*
Бемоль = *es*

Знаки в тональностях

До мажор C - dur
ля минор a - moll



Фа мажор F - dur
ре минор d - moll



1



Соль мажор G - dur
ми минор e - moll

Си ♭ мажор B - dur
соль минор g - moll



2



Ре мажор D - dur
си минор h - moll

Ми ♭ мажор Es - dur
до минор c - moll

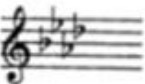


3

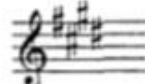


Ля мажор A - dur
фа ♯ минор fis - moll

Ля ♭ мажор As - dur
фа минор f - moll

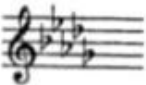


4



Ми мажор E - dur
до ♯ минор cis - moll

Ре ♭ мажор Des - dur
си ♭ минор b - moll

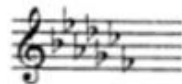


5

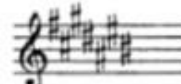


Си мажор C - dur
соль ♯ минор gis - moll

Порядок написания бемолей



Порядок написания диезов



65.

Musical notation for exercise 65, written in G major (one sharp) and 2/4 time. The piece consists of eight measures. The notes are: G4 (quarter), A4 (quarter), B4 (quarter), C5 (quarter), B4 (quarter), A4 (quarter), G4 (quarter), and F#4 (quarter). Four blue rectangular boxes are placed over the notes in measures 1, 3, 5, and 8.



Allegretto

Ф. Шуберт. Весенний сон.

а)



Moderato

Ф. Шуберт. Любопытство.

б)



Ни звезды - ни цветочек не спрашиваю я

данному образцу.

G - dur

Musical notation for G major triads in various positions on a single staff. The key signature has one sharp (F#). The notation shows four measures, each containing a triad and its inversion. The triads are labeled below the staff: D₇ T, D₅ T, D₃ T, and D₂ T₆. The notes are connected by curved lines to show their movement between positions.

A - dur

An empty musical staff with four measures, intended for practicing A major triads in various positions. The staff is currently blank.

1. Соедините разноцветными стрелочками данные аккорды и соответствующие им схемы строения.

The image shows a musical staff with seven chords. Below the staff are seven boxes containing interval patterns. The chords and their corresponding patterns are as follows:

Chord	Interval Pattern
$\text{C}^{\flat} \text{ major}$	$\text{б.3} + \text{ч.4}$
$\text{C}^{\sharp} \text{ major}$	$\text{б.3} + \text{м.3}$
$\text{D}^{\flat} \text{ major}$	$\text{б.3} + \text{б.3}$
$\text{D}^{\sharp} \text{ major}$	$\text{ч.4} + \text{б.3}$
$\text{E}^{\sharp} \text{ major}$	$\text{м.3} + \text{м.3}$
$\text{F}^{\flat} \text{ major}$	$\text{м.3} + \text{б.3}$
$\text{F}^{\sharp} \text{ major}$	$\text{м.3} + \text{ч.4}$

The interval patterns in the boxes are: $\text{б.3} + \text{ч.4}$, $\text{б.3} + \text{м.3}$, $\text{б.3} + \text{б.3}$, $\text{ч.4} + \text{б.3}$, $\text{м.3} + \text{м.3}$, $\text{м.3} + \text{б.3}$, and $\text{ч.4} + \text{м.3}$.