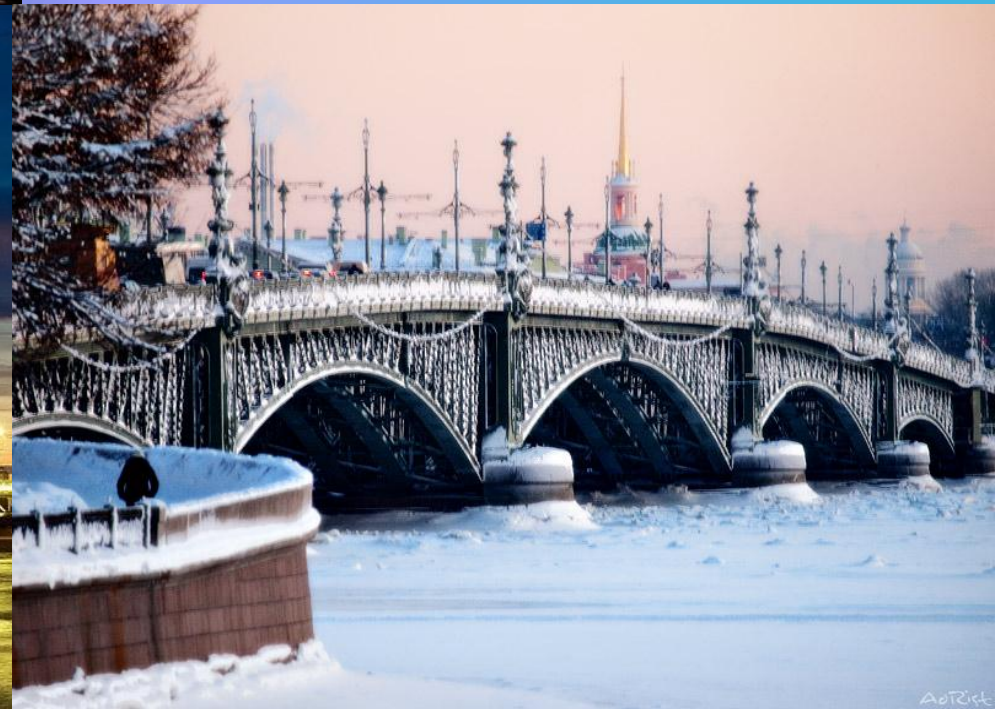


Bridges through Neva river



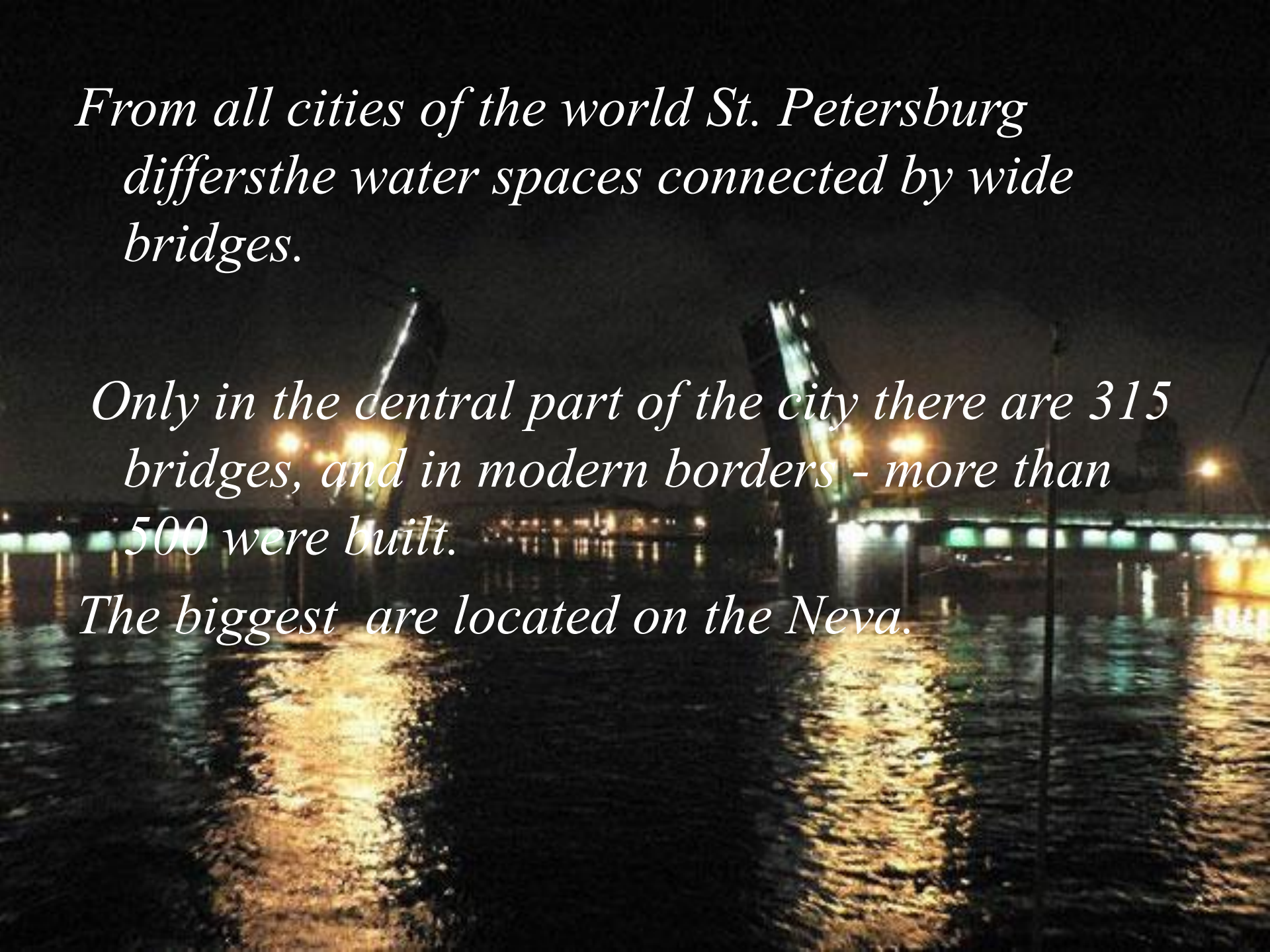
During our excursion we will talk about the construction and shape of three bridges through the Neva : the Blagoveshchensky Bridge, the Dvortsovy Bridge and the Troitsky Bridge.



*From all cities of the world St. Petersburg
differs the water spaces connected by wide
bridges.*

*Only in the central part of the city there are 315
bridges, and in modern borders - more than
500 were built.*

The biggest are located on the Neva.



The Blagoveshchensky Bridge



The Blagoveshchensky Bridge is located in the bottom of current of the Big Neva, and that bridge is really unique. The Blagoveshchensky bridge is the first constant bridge through the Neva.

The construction of the bridge lasted from 1843 to 1850. The project of the constant bridge through Neva was developed by talented engineer S.V.Kerbedz.



Its handrail with images in each link of a sink and a trident – a symbol of the sea became an openwork frame of the bridge.



The project of a lattice was created by architect A.P.Bryullov.

In the middle of the 19th century the bridge received the name from the church, which was nearby .



*The bridge before
reconstruction*



*The bridge after
reconstruction
(2007)*

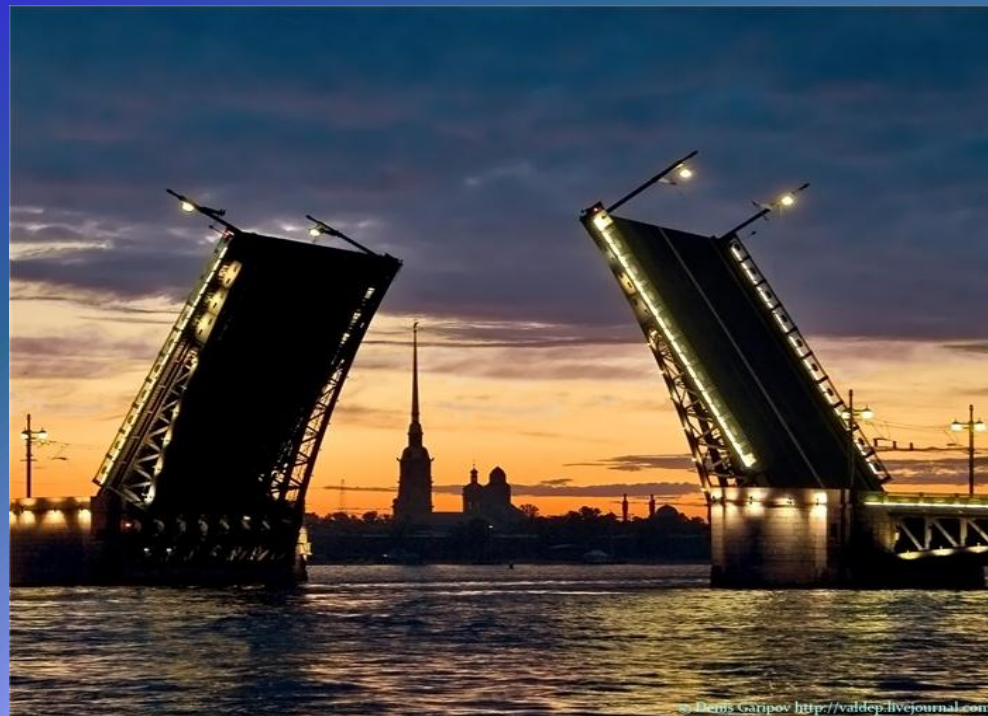
The Dvortsovy Bridge

The Dvortsovy Bridge through the Neva connected the Admiralty and the University embankments.



It was named Dvortsovy, thanks to the Winter palace which is in close proximity.

*Construction began in 1912
according to A.P.Pshenitsky's
project.*



*In bridge design L.N.Benoa,
R.F.Melzer,
M. M.Peretyatkovich.
took an active
part*



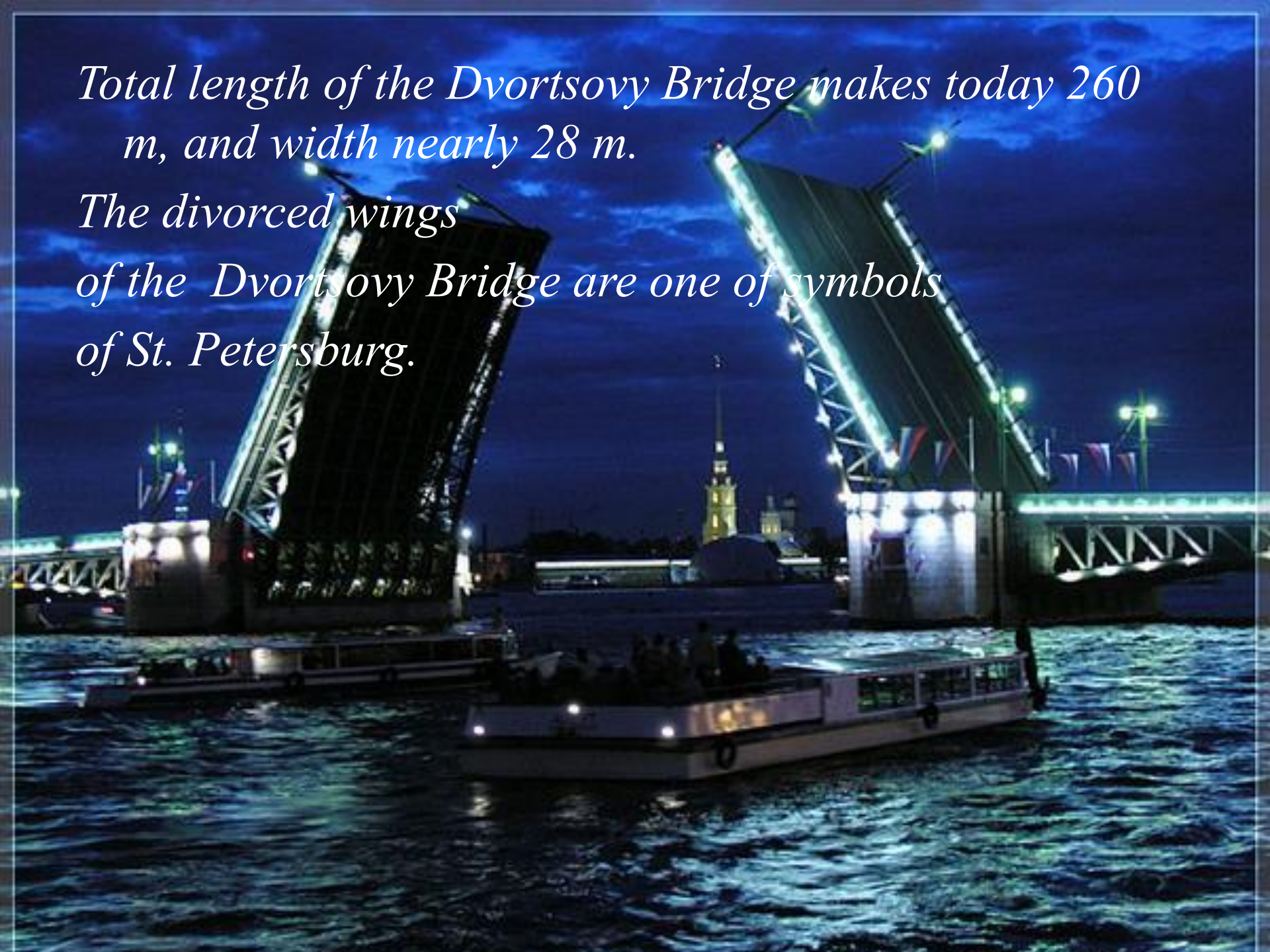
The Dvortsovy Bridge appeared the most difficult from the engineering point of view among all bridges through the Neva.

There were interruptions in financing because in August, 1914 World War I began.

As a result construction of Dvortsovy Bridge was carried out by the slowed-down rates. Movement on the Dvortsovy Bridge was opened only in 1916.

Total length of the Dvortsovy Bridge makes today 260 m, and width nearly 28 m.

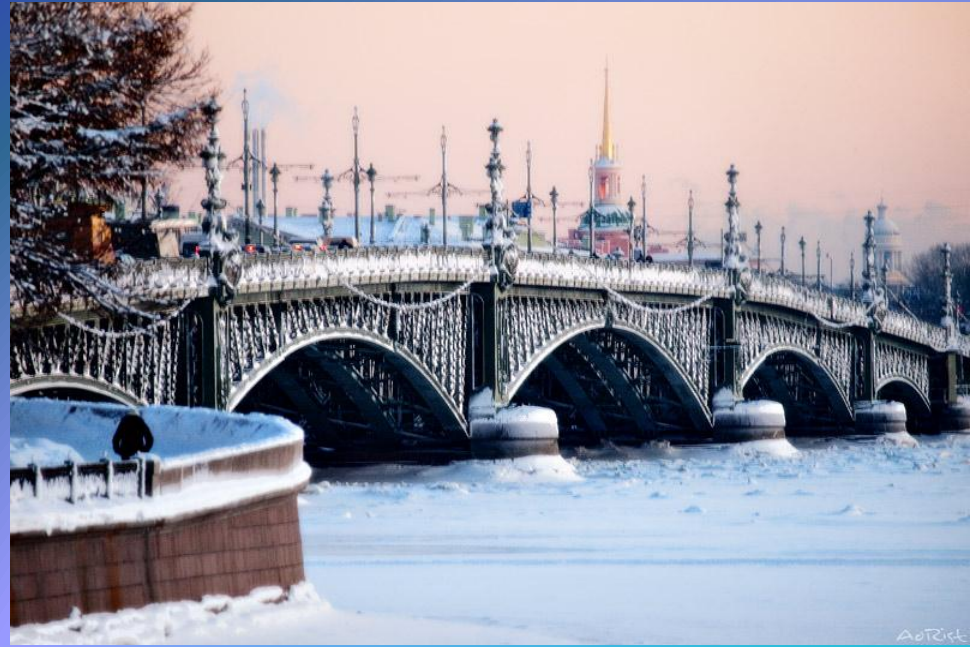
The divorced wings of the Dvortsovy Bridge are one of symbols of St. Petersburg.



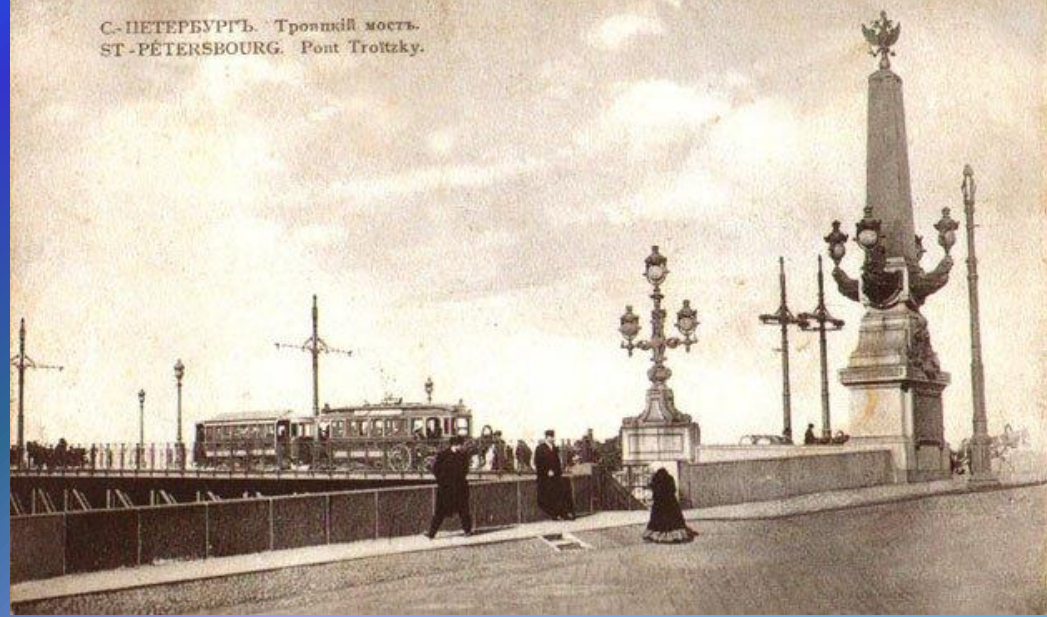
The Troitsky Bridge

The Troitsky Bridge connects the central part of St. Petersburg and the Petrogradskay part. At once at the bridge, to the Petrogradskskay part, the known Museum of history of St . Petersburg

"The Peter and Paul Fortress". The Troitsky Bridge by right settles down it is considered one of the most beautiful bridges of St. Petersburg. Openwork registration of the bridge connects majestic imperial style and severity of engineering standards. Separate art value to the Troitsky Bridge is given by lattices, gracefully unique with metal arch farms of flights of a crossing.



С.-ПЕТЕРБУРГЪ. Троицкий мостъ.
ST-PETERSBOURG. Pont Troitzky.



The bridge became the third constant bridge through the Neva in St.Petersburg.

On a day of celebration of the 200th anniversary of St.Petersburg Troitsky Bridge was opened. . Competition on the best project was held. The project of French architect Eysel won in that competition . Construction of the bridge was entrusted the French firm "Batinyol".

*the Troitsky
Bridge
received the name
from the Troitsky
cathedral.*



*Before creation of the Alexander
Nevsky Bridge the Troitsky Bridge was considered
as the longest in the city.*

.

Interesting facts about the Troitsky Bridge

- The Soviet pilot Valery Tchkalov made the impudent flight under the Troitsky Bridge. Later, in 1940, for the biographic movie "Valery Tchkalov" pilot Evgeny Borichenko repeated flight under the bridge six times.*



- *During the Great Patriotic War the Troitsky Bridge was exposed more than once to aim bombing, however practically didn't suffer.*

In 2001-2002 serious reconstruction of the bridge carried out during which initial elements of a decor were restored - autocracy symbols were returned on the bridge: two-headed eagles and crowns.





The end

