



POSITIVE

**SLOW**

медленный

COMPARATIVE

adj + ER

**SLOWER**

медленнее

SUPERLATIVE

**THE SLOWEST**

the + adj + EST

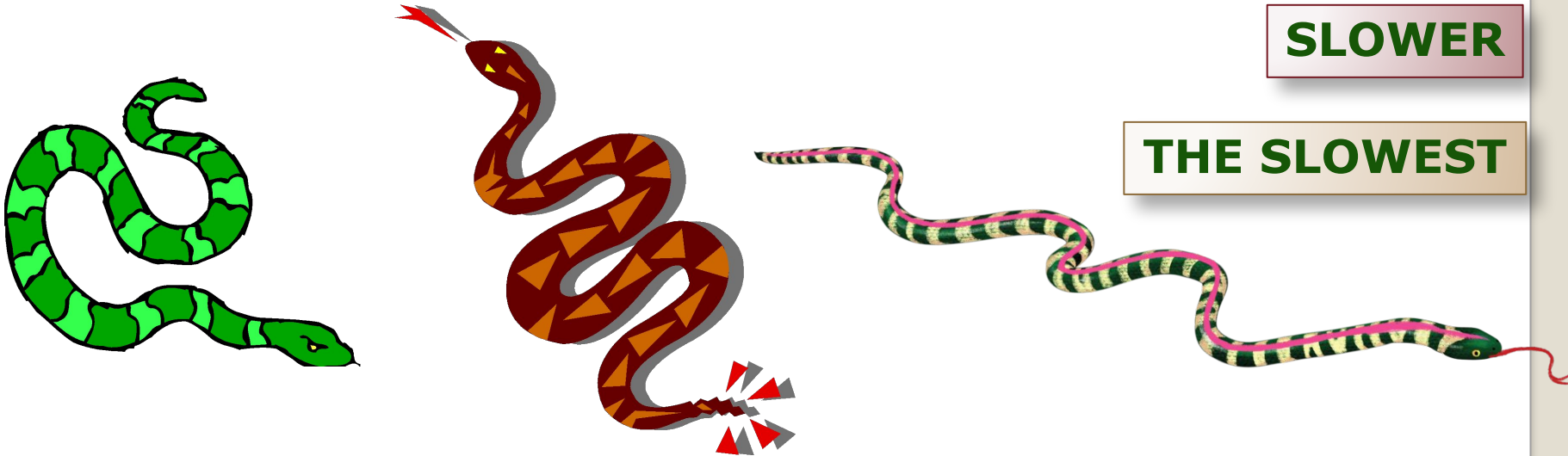
самый

медленный

**SLOW**

**SLOWER**

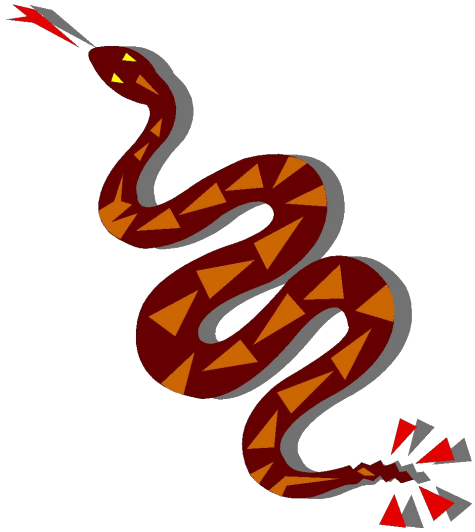
**THE SLOWEST**



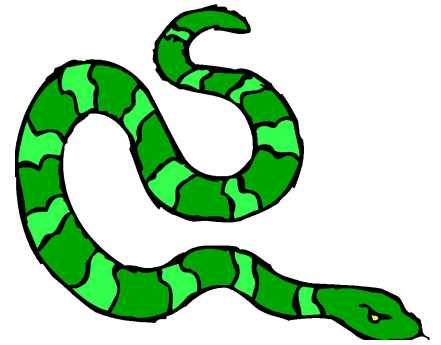
The green snake is long.

The brown snake is LONGER

The pink snake is THE LONGEST.



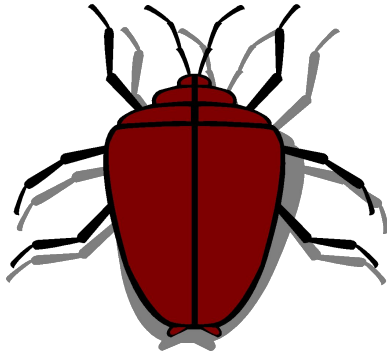
THAN  
ЧЕМ



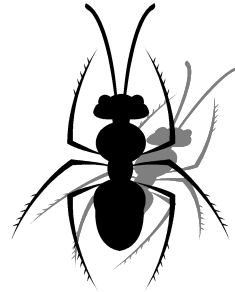
The green snake is long.

The brown snake is LONGER THAN  
the green snake.

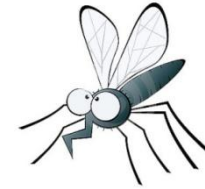
small



smaller



the smallest



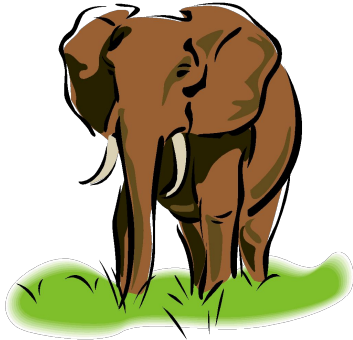
The beetle is small.

The ant is SMALLER **THAN** the beetle.

COMPARATIVE  
adj + ER

The gnat is THE SMALLEST.

SUPERLATIVE  
the + adj + EST



ELEPHANT



dog



horse

The elephant is fast.

The dog is fastER **THAN** the elephant.

The horse is the fastest.



1

The first house is high.



2

The second house is highER **THAN** the first house.



3

The third house is higher **THAN** the second house.

The third house is **THE** highEST.

**Compare these girls:**

Marry,  
7

Ann,  
6

Betty,  
5

**old – older –  
young – younger –  
the oldest  
the youngest**



1. Ann is **older**... than Betty.
2. Ann is **younger**... than Marry.
3. Betty is **younger**... than Ann.
4. Marry is **the oldest** of all.
5. Betty is **the youngest** of all.



**Thanks for  
your attention!**