

# Дорожная разметка

1 — горизонтальная,

2 — вертикальная,

Горизонтальная разметка имеет белый цвет (основная), оранжевый (временная), желтый

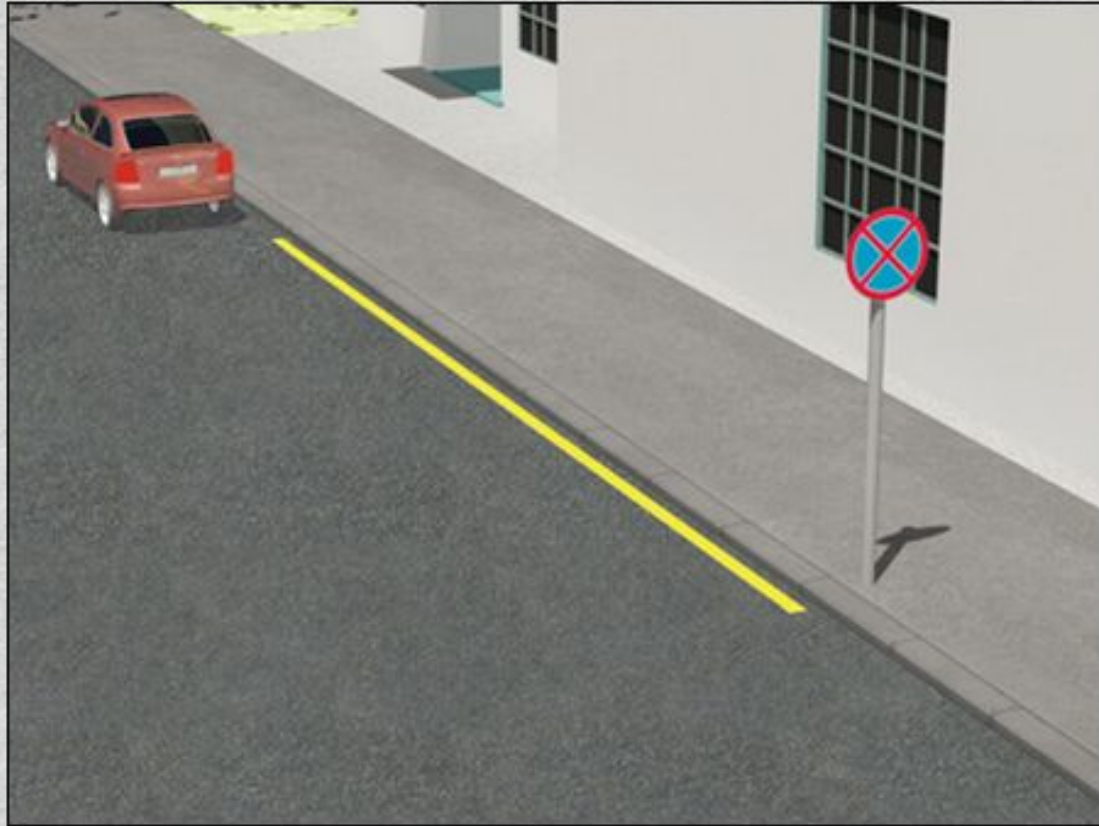








1.4

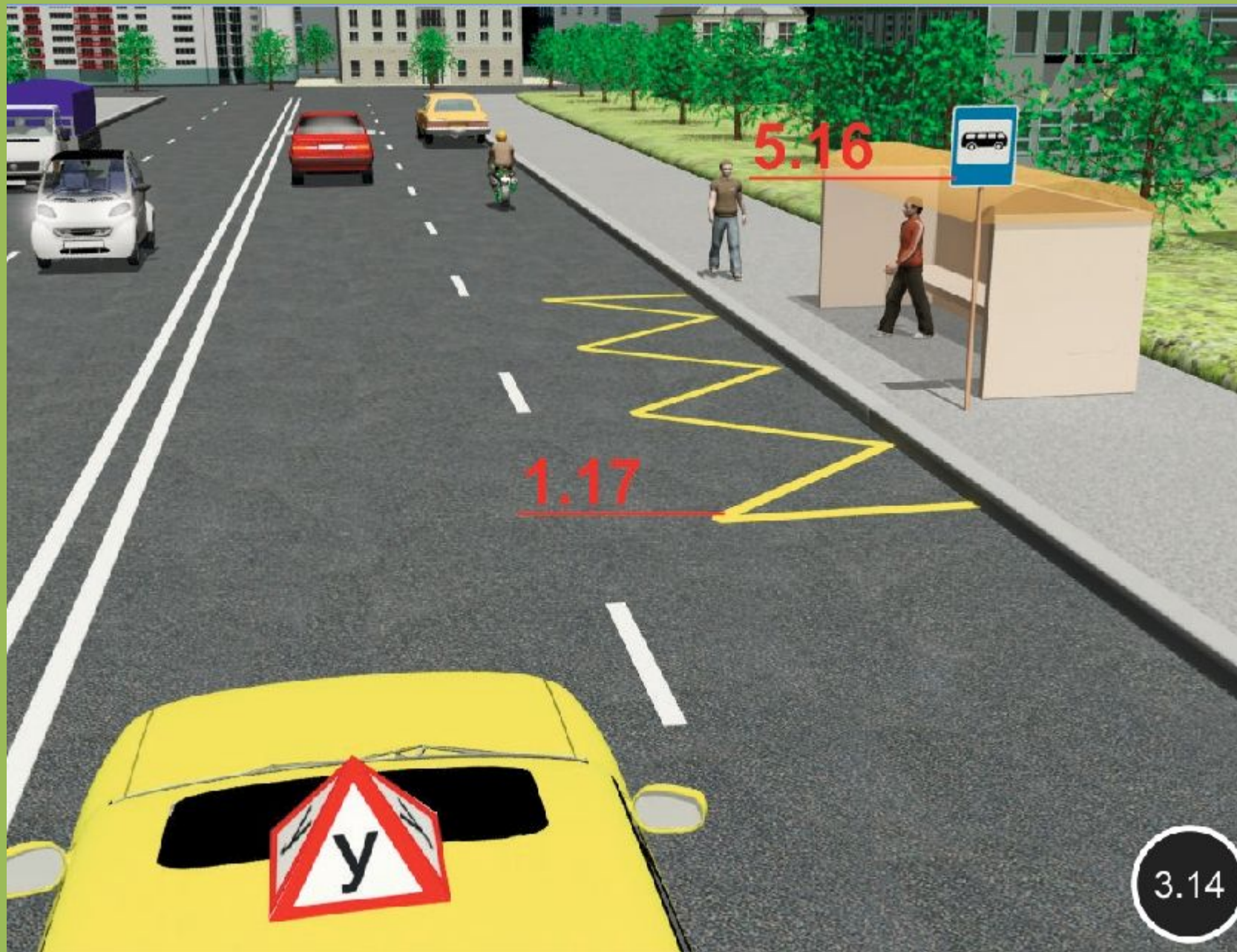












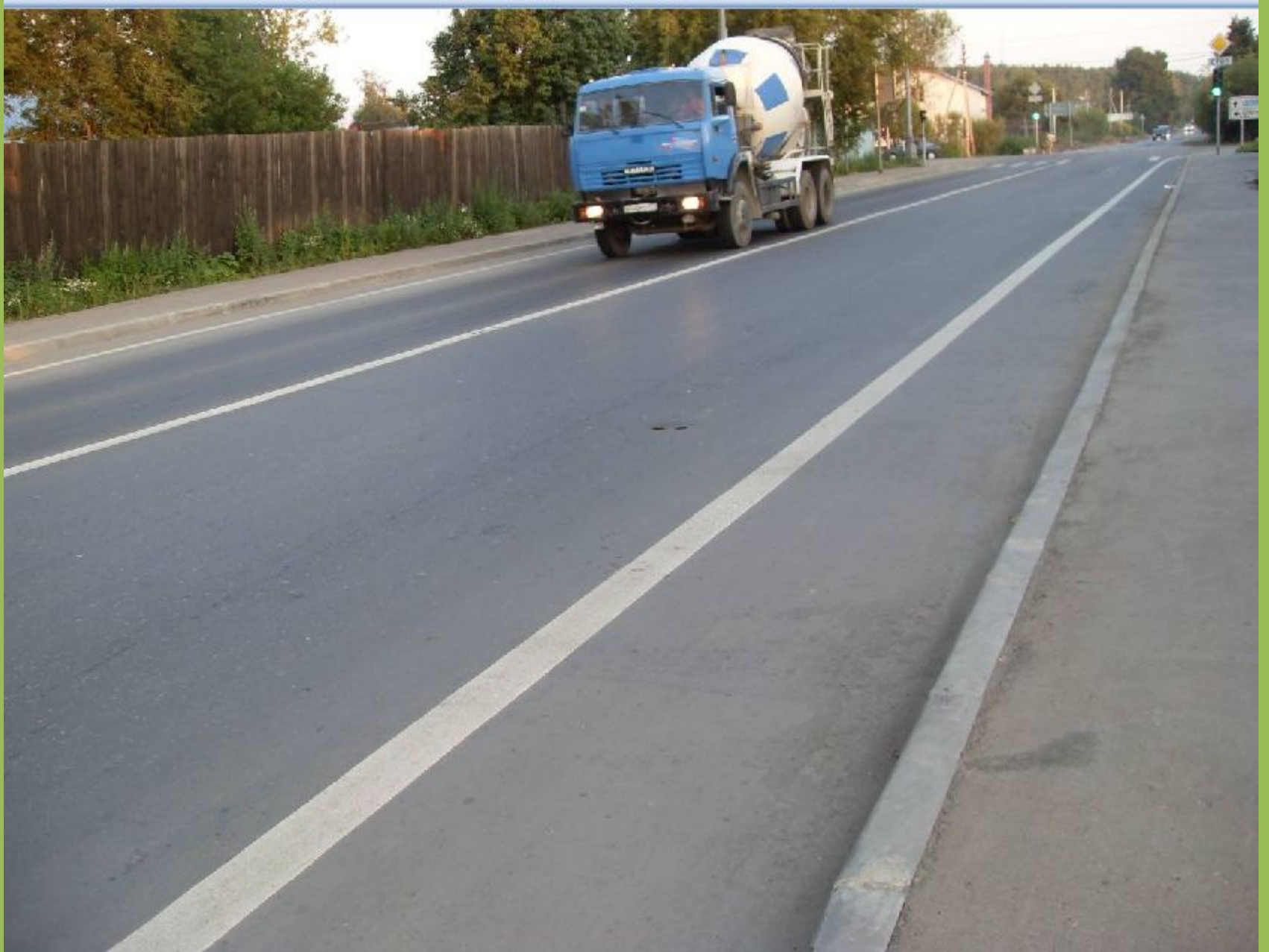
3.14





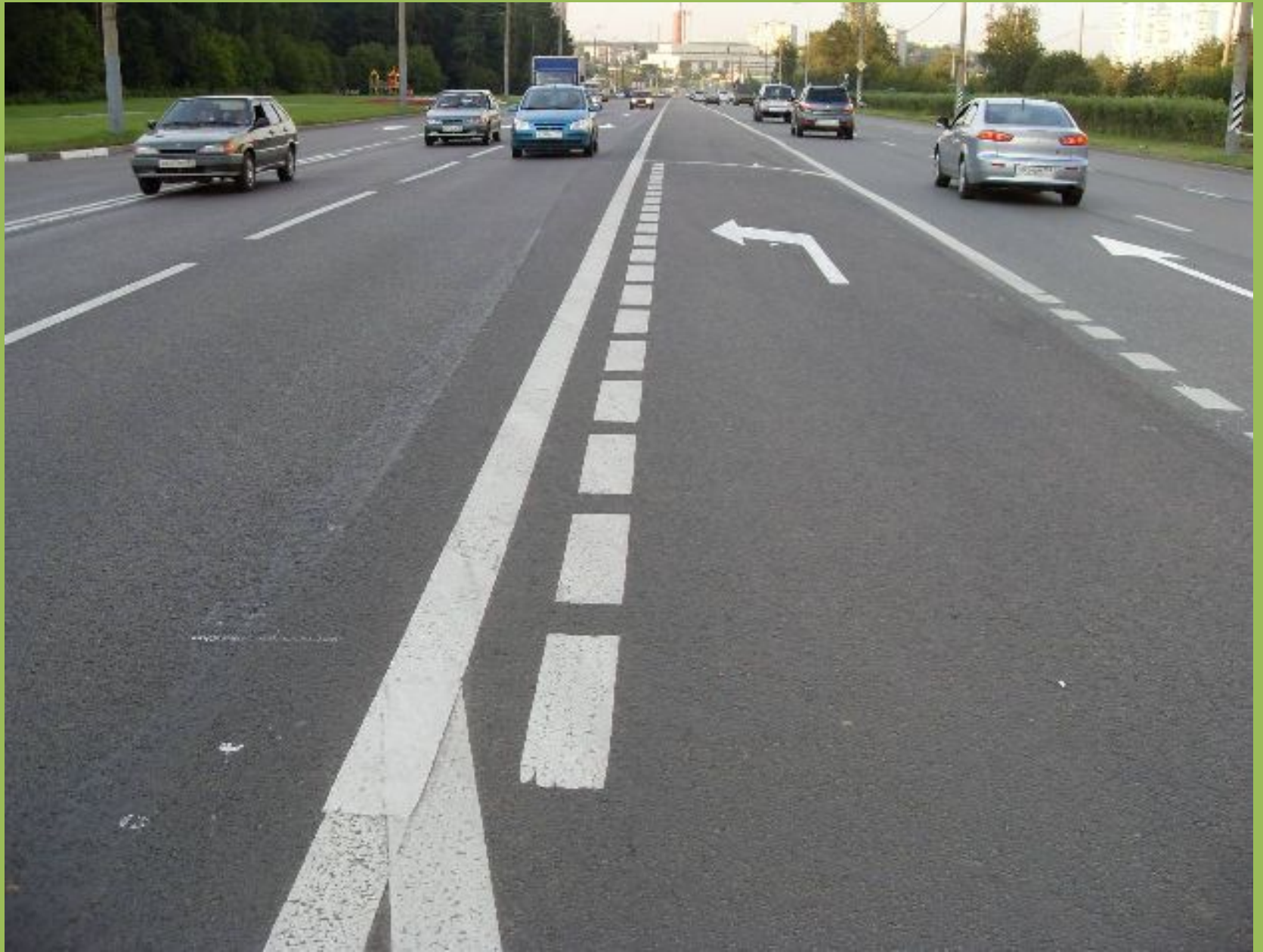


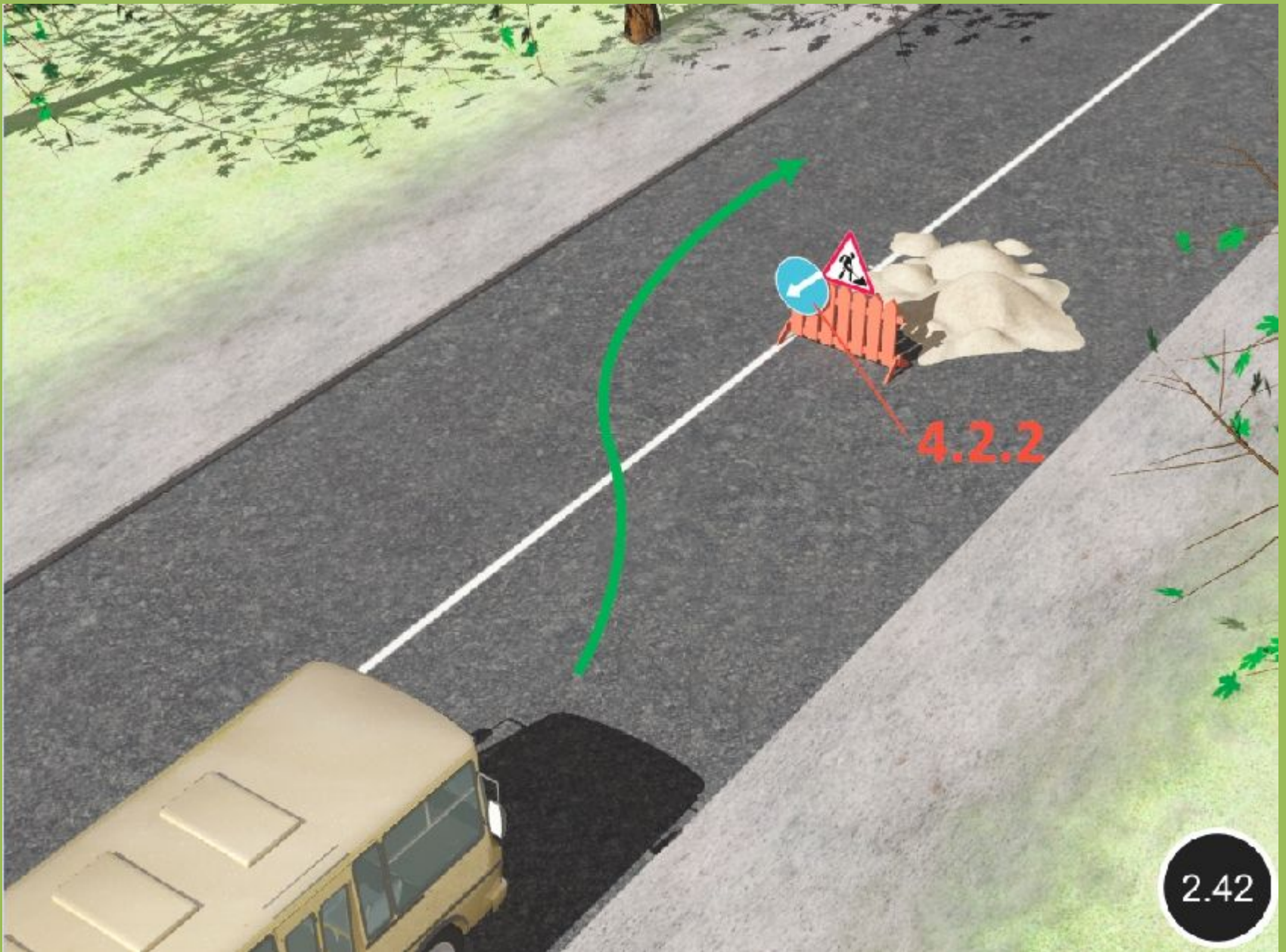


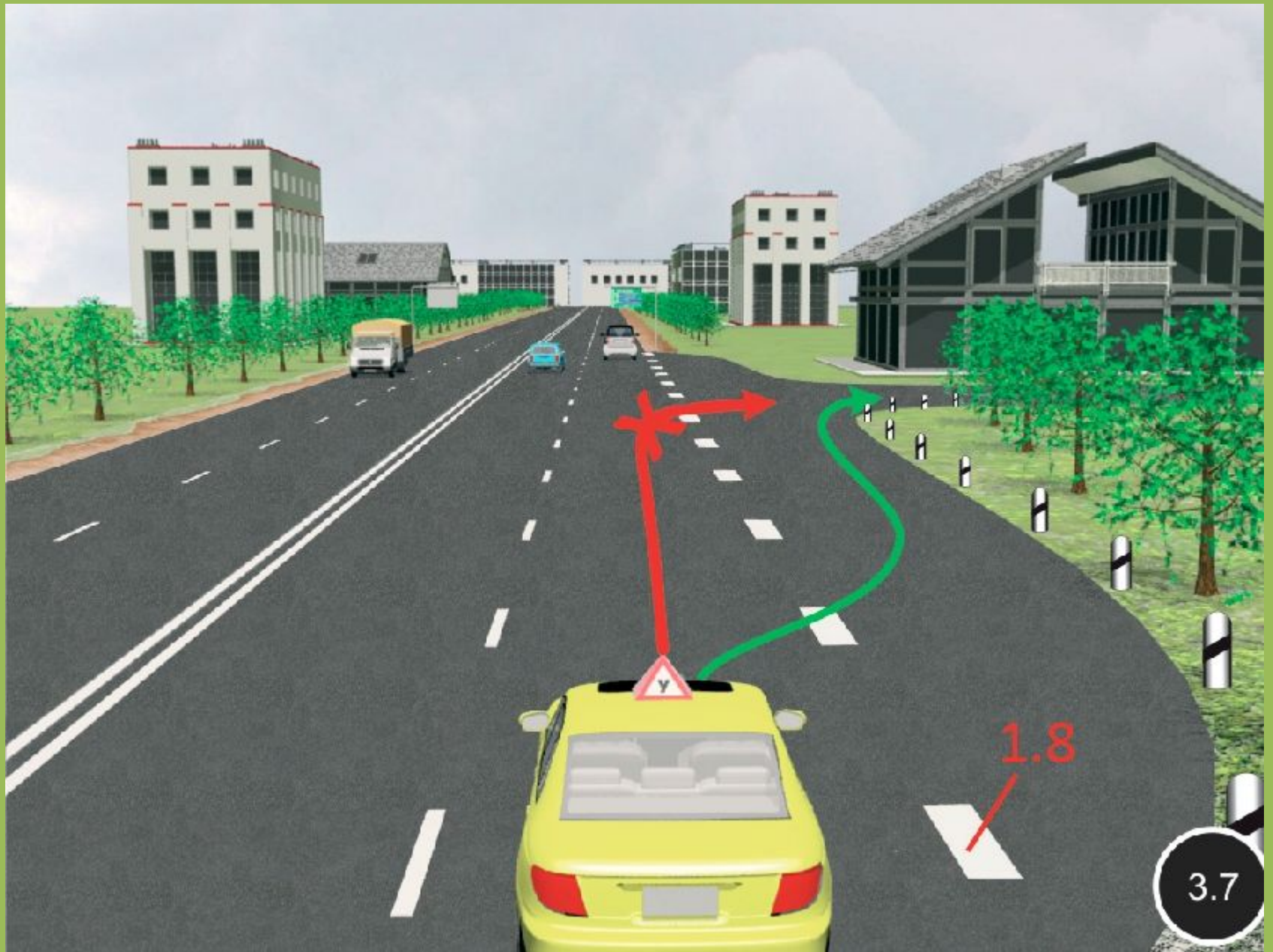




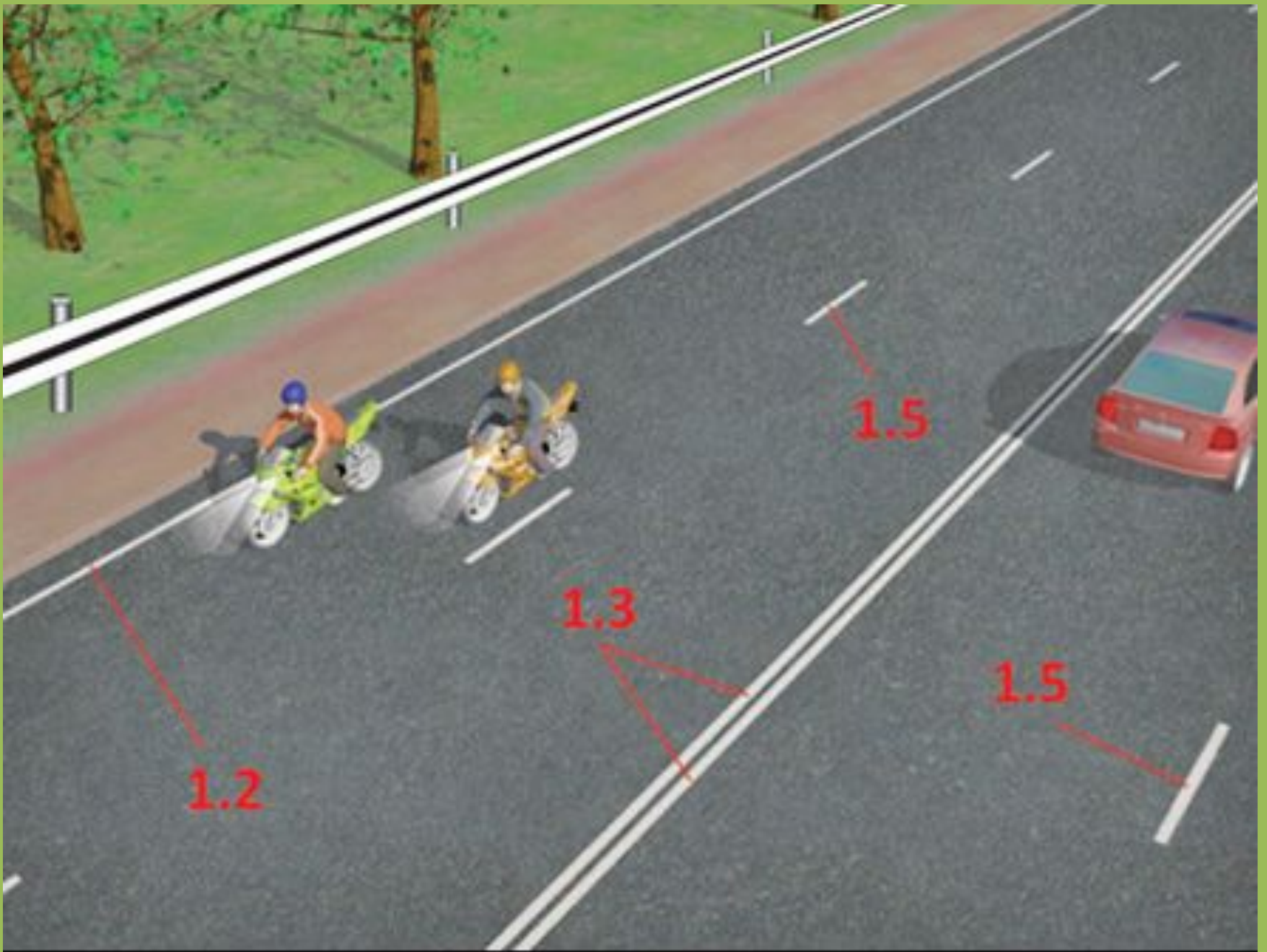


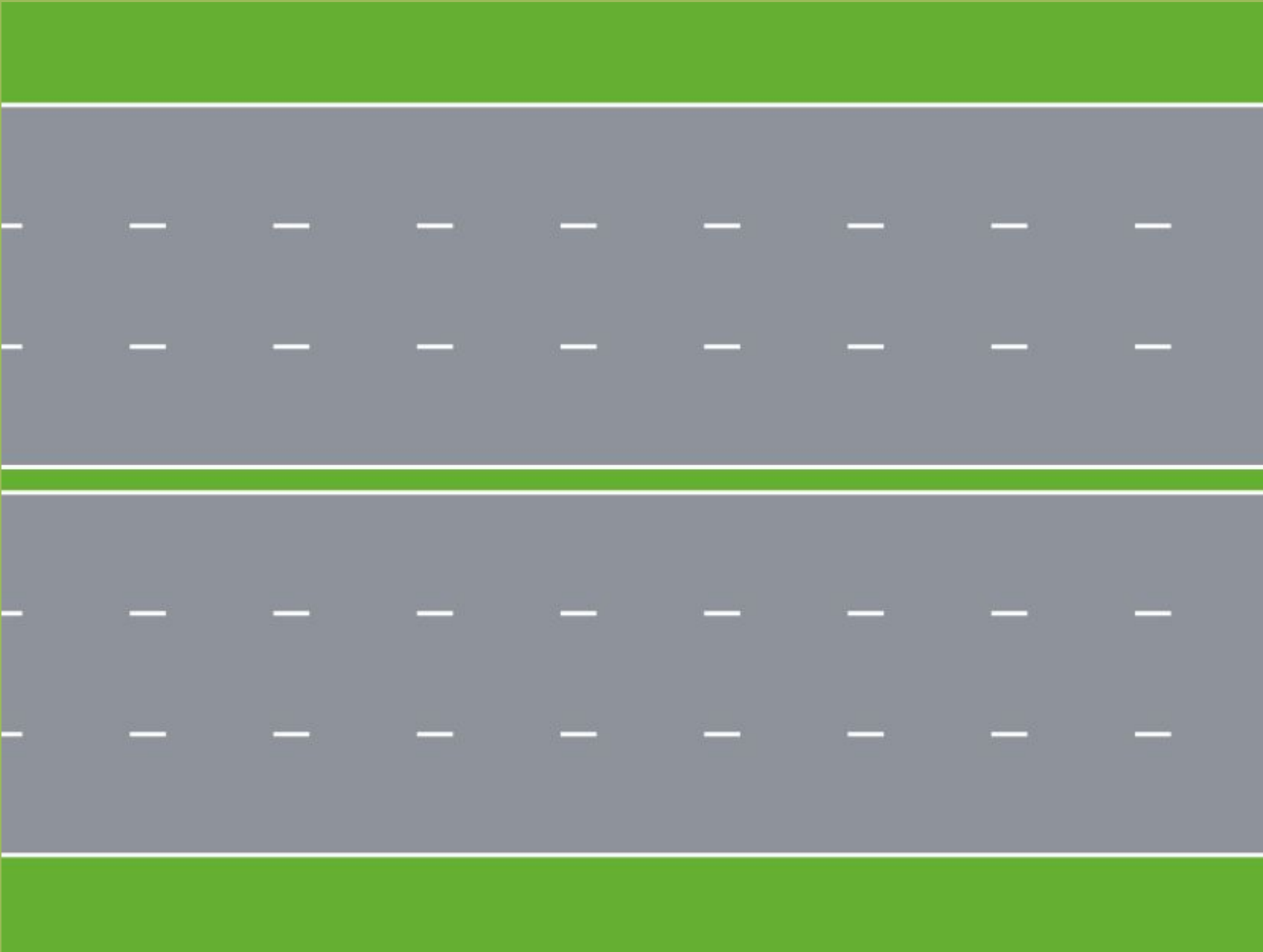


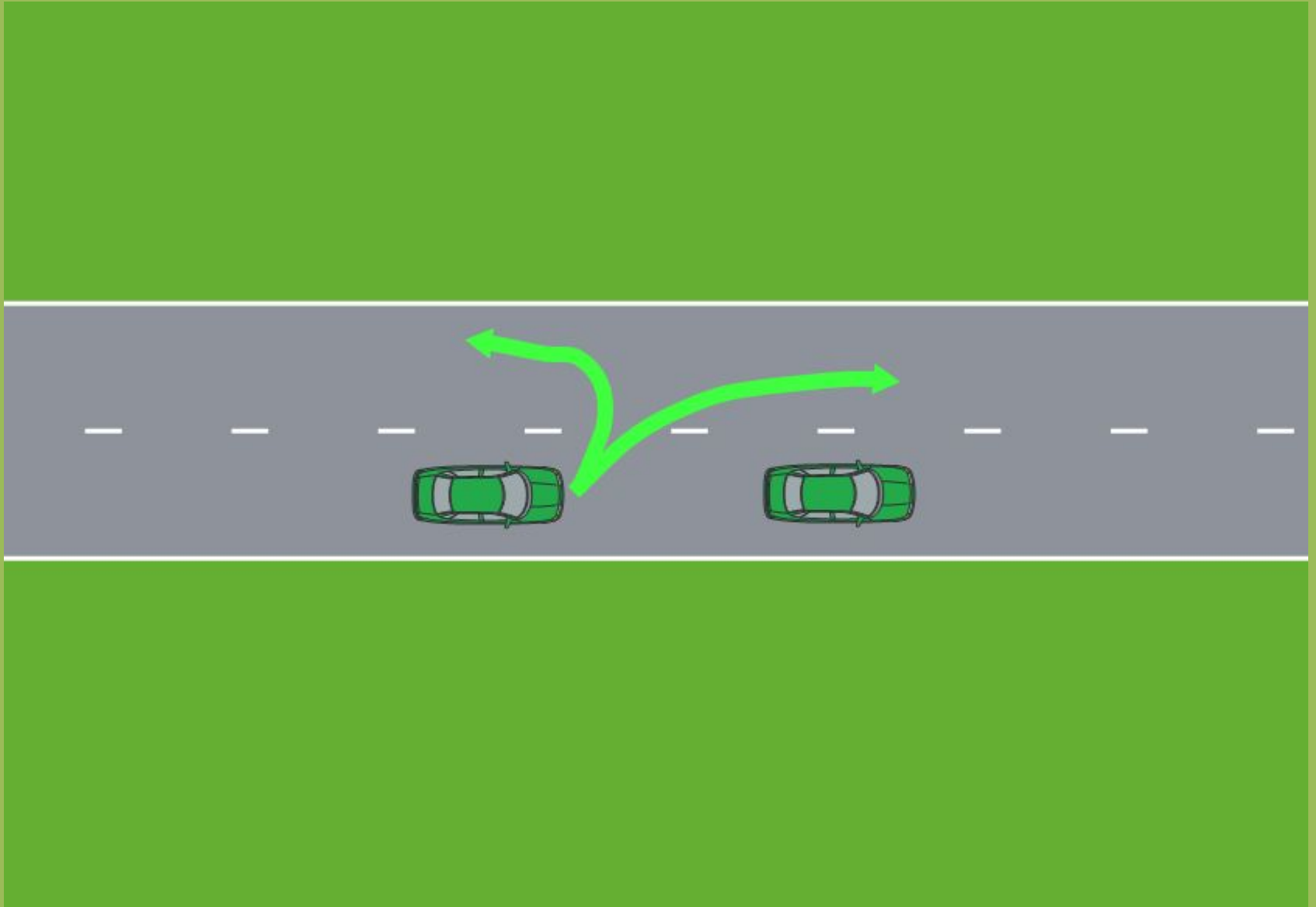






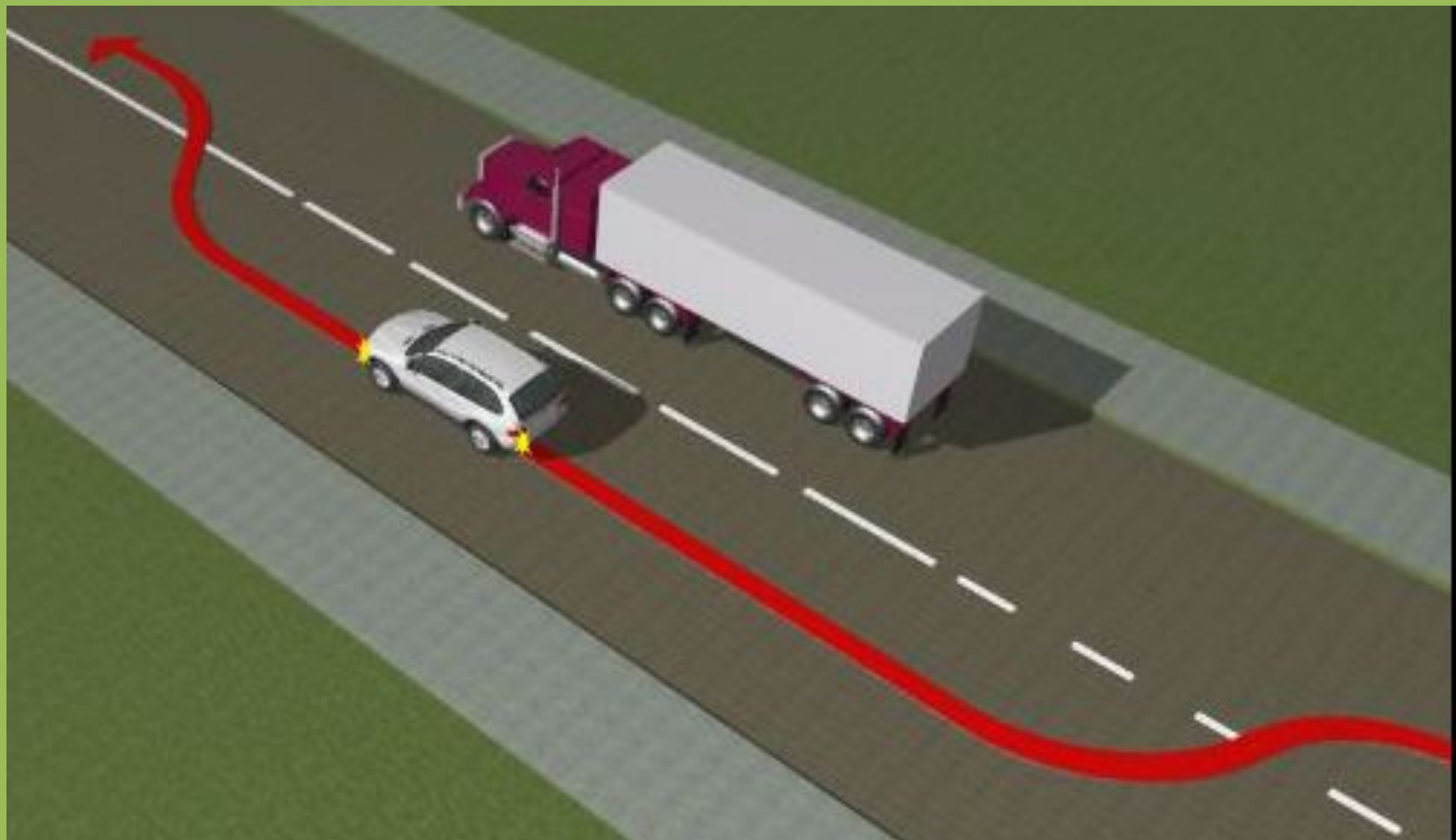


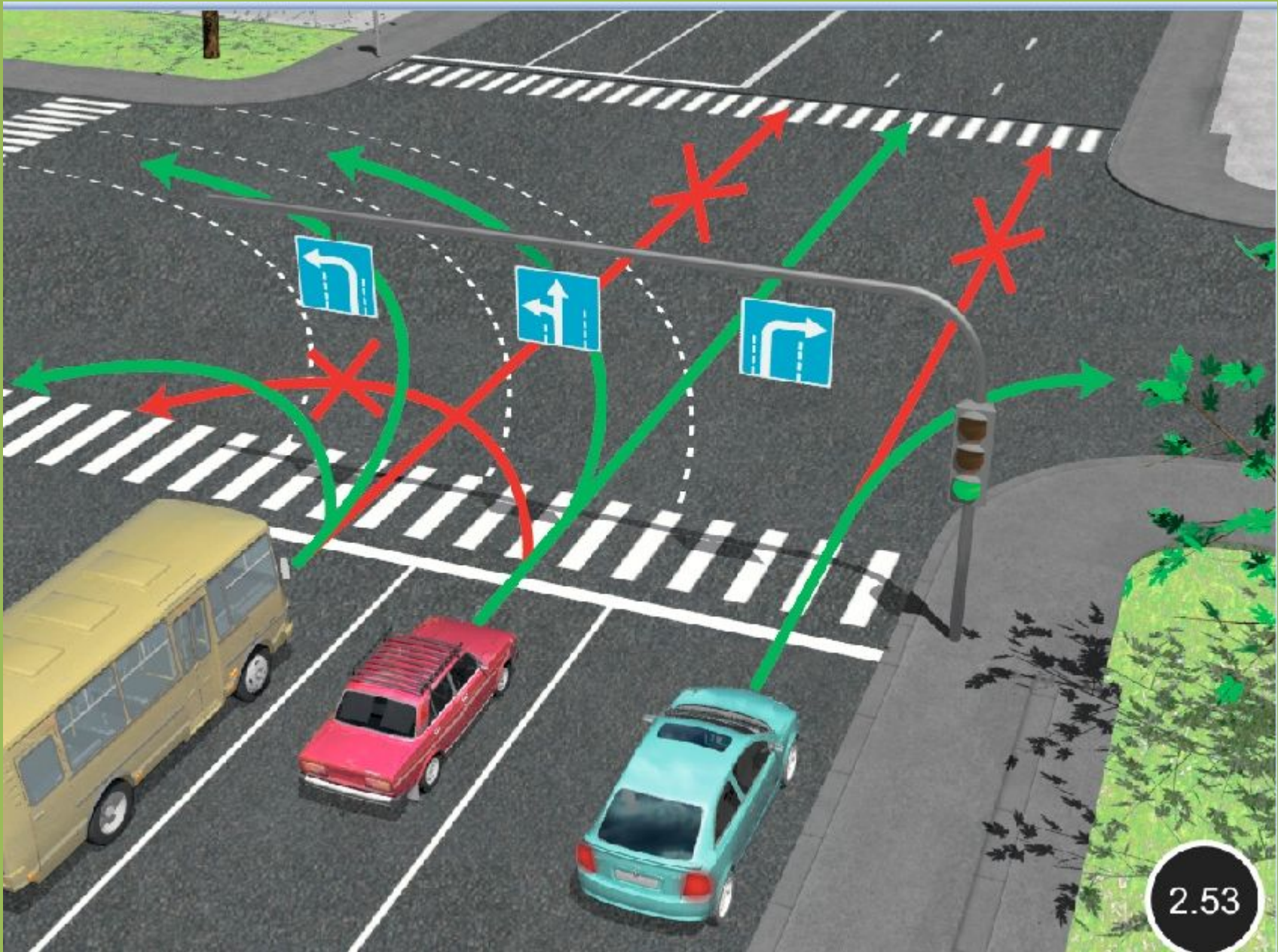






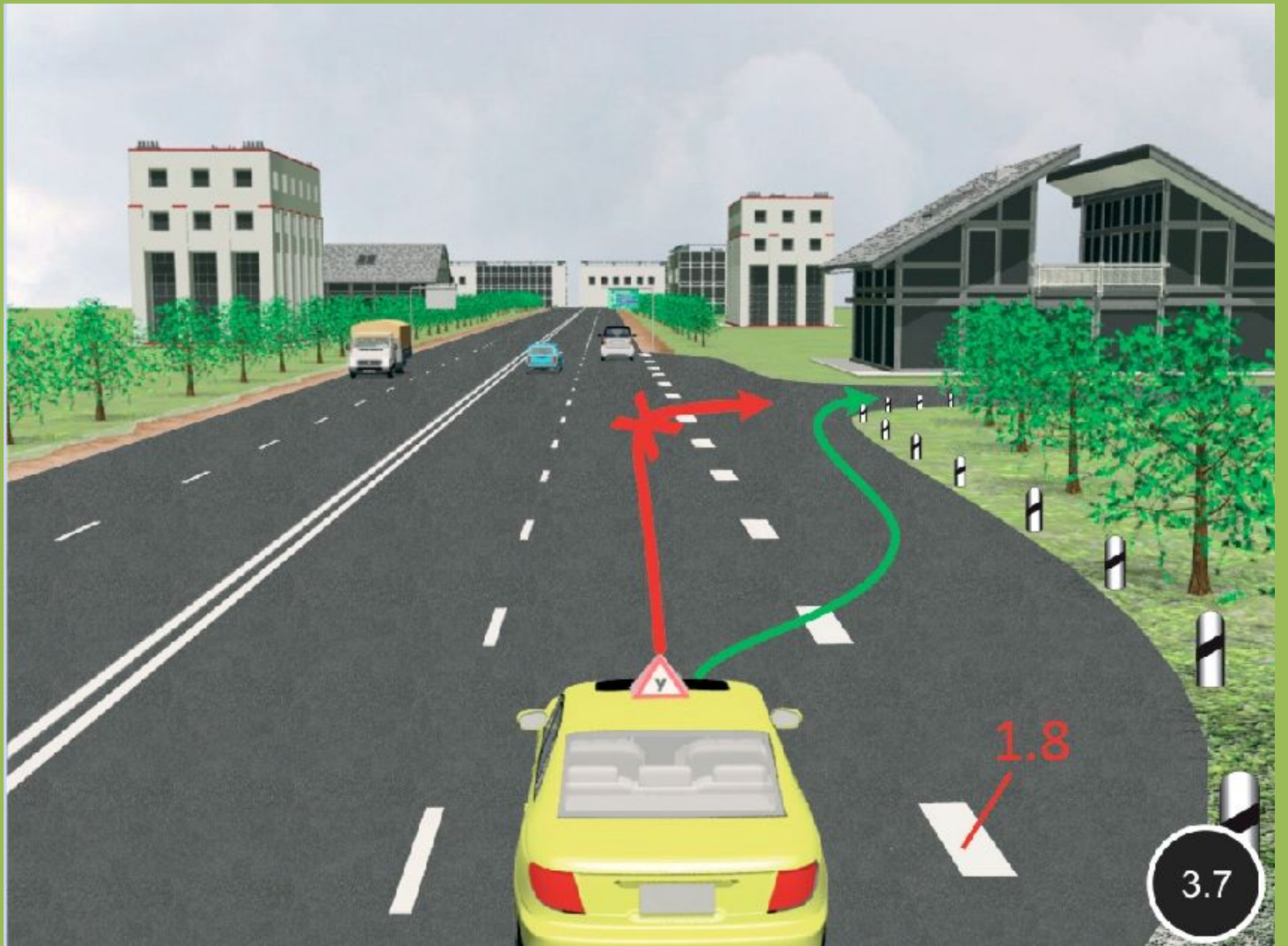


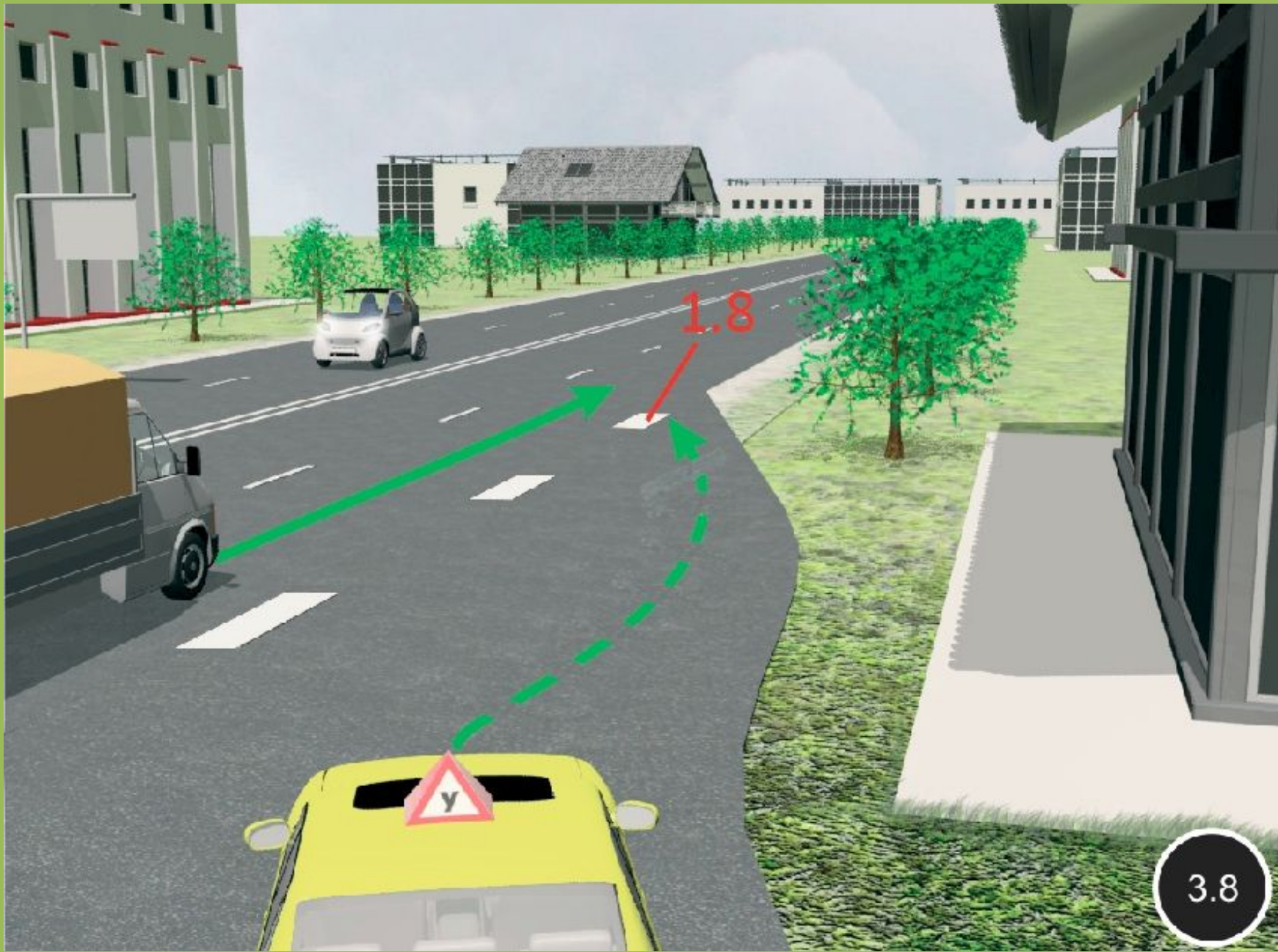


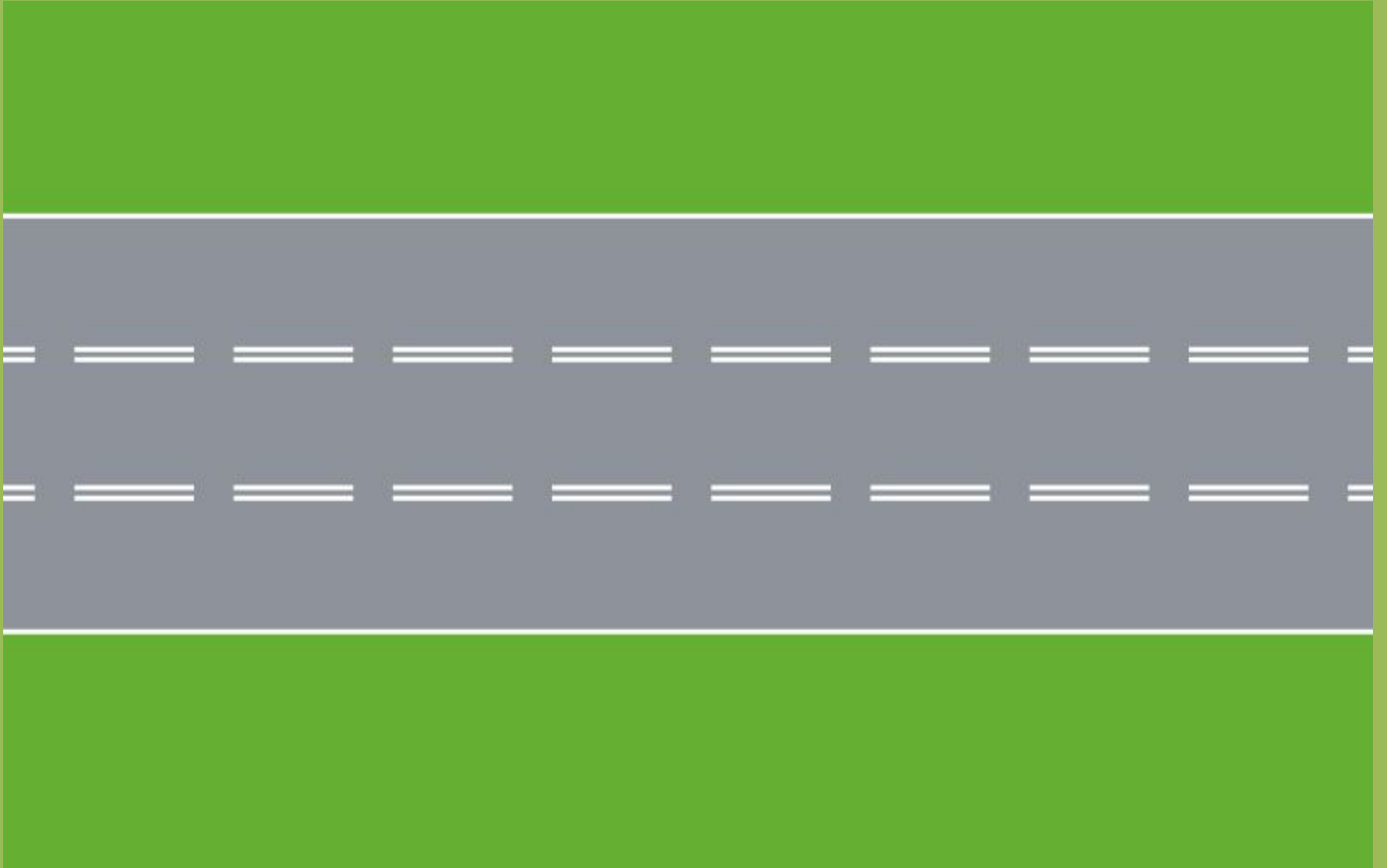










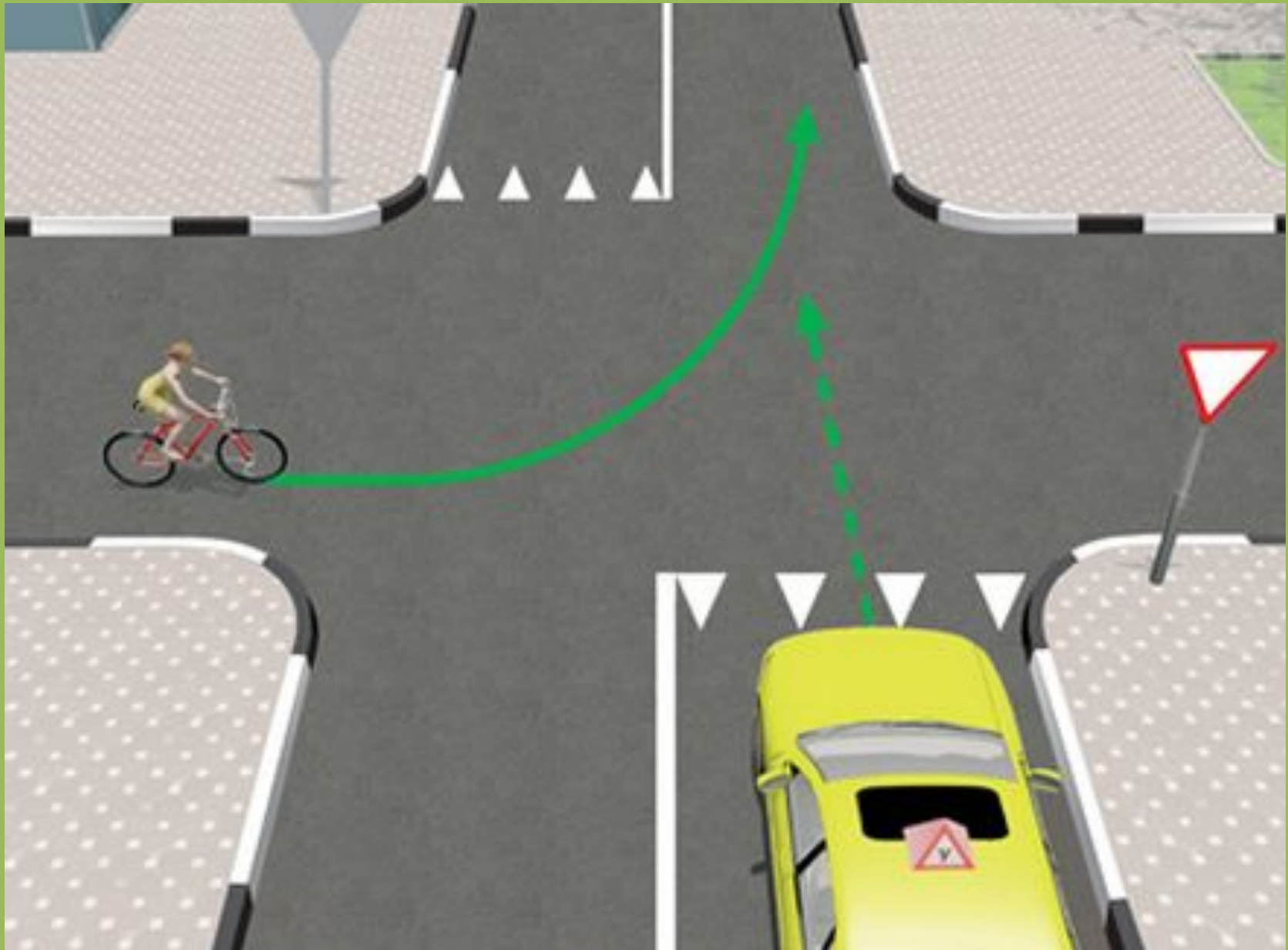






























**M 27**

**A-141**

**1P 242**

**E8**

Знак 1.20.2



1.24.1



Знак 3.24



1.24.2



Знак 8.17

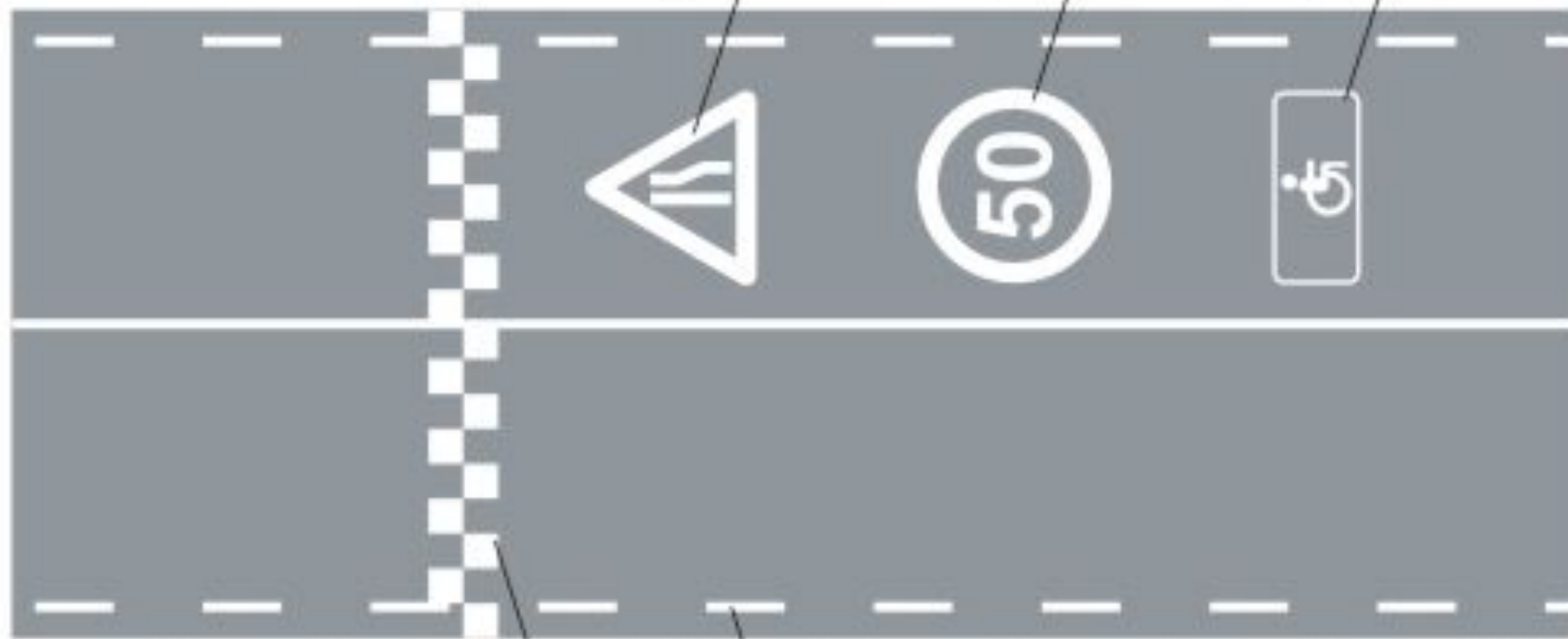


1.24.3



1.25

1.2.2





# Разметка 1.24.3

инвалид







