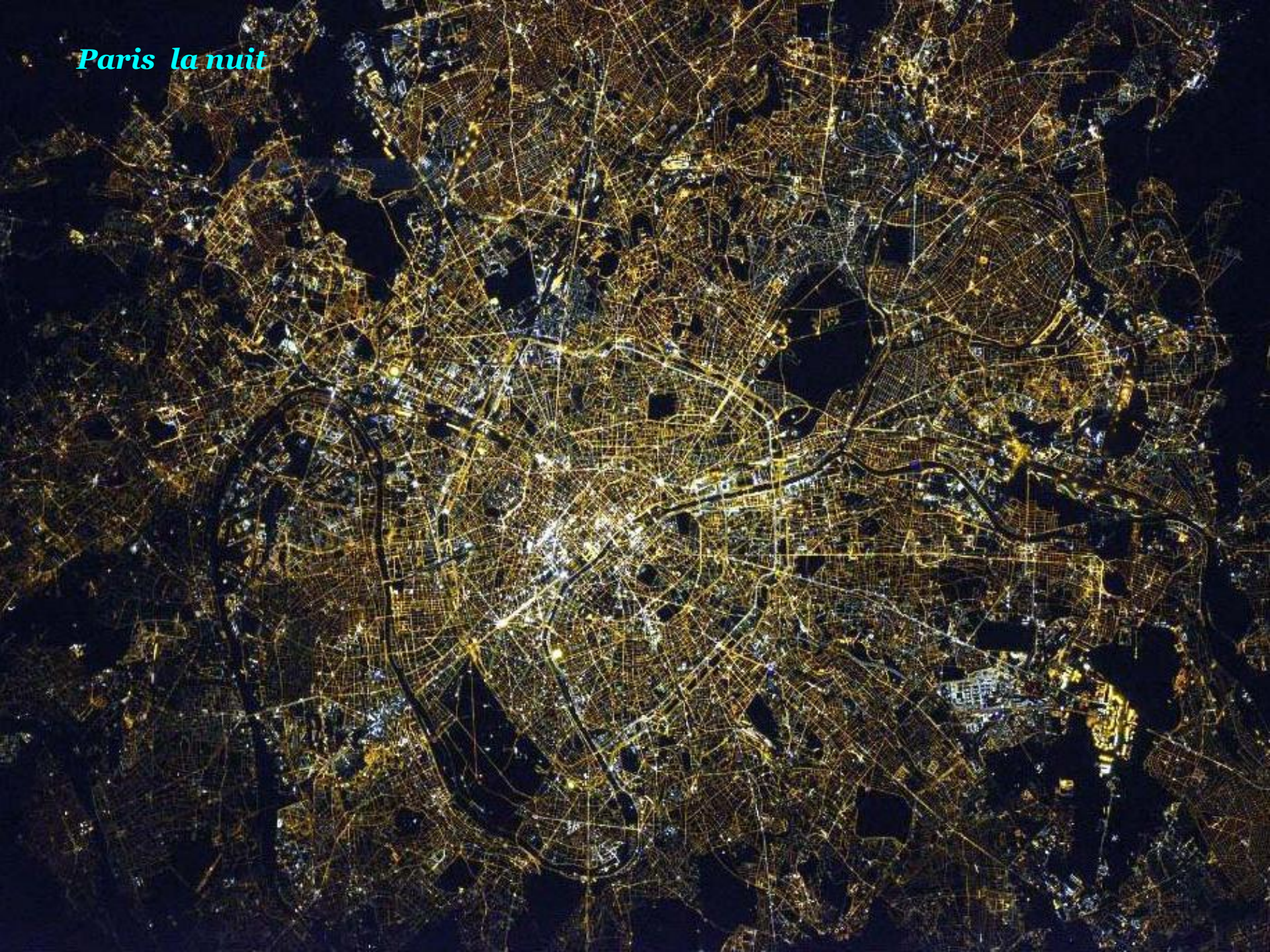






Thomas Pesquet

Paris la nuit





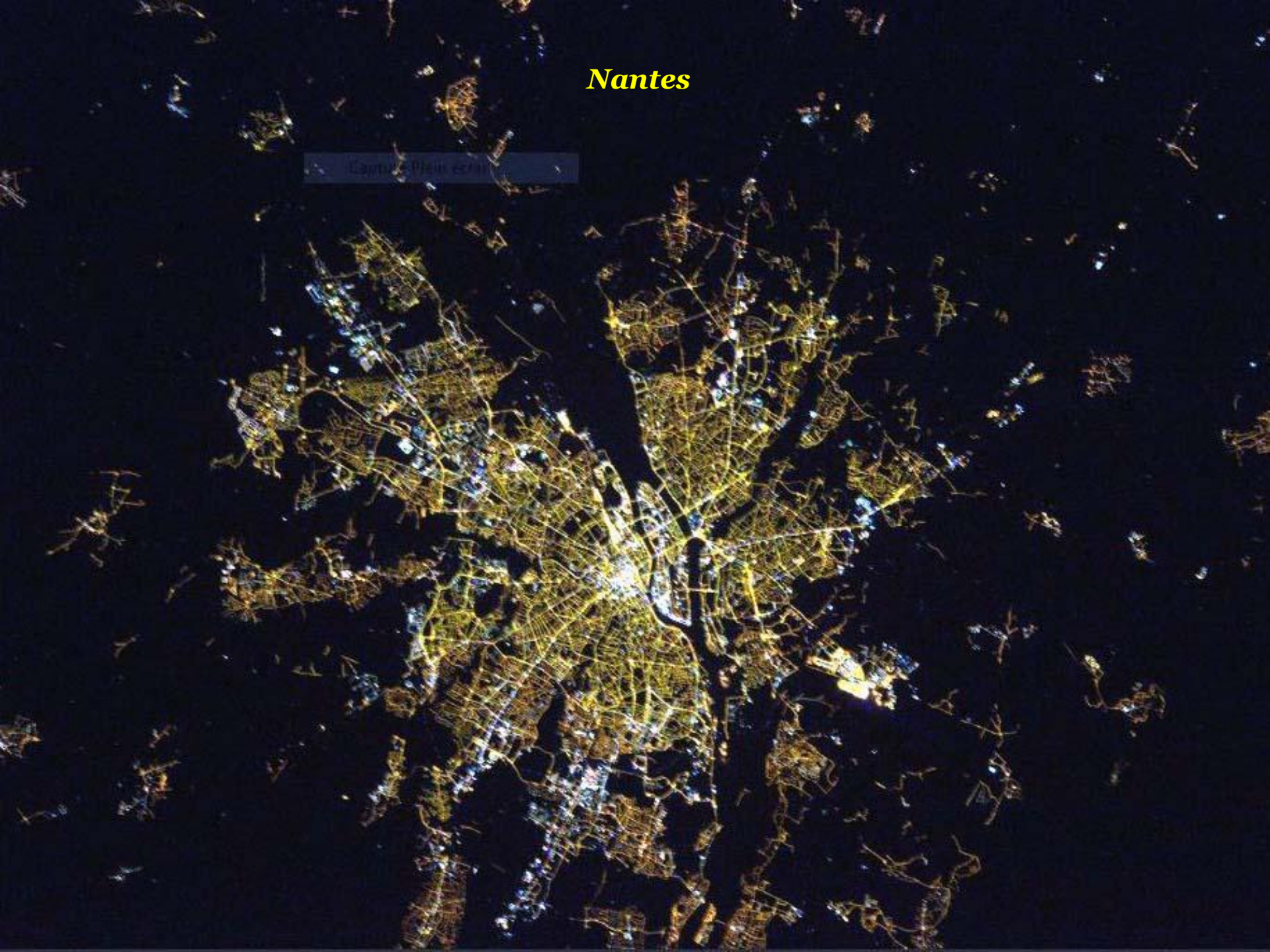
Lyon



Bordeaux

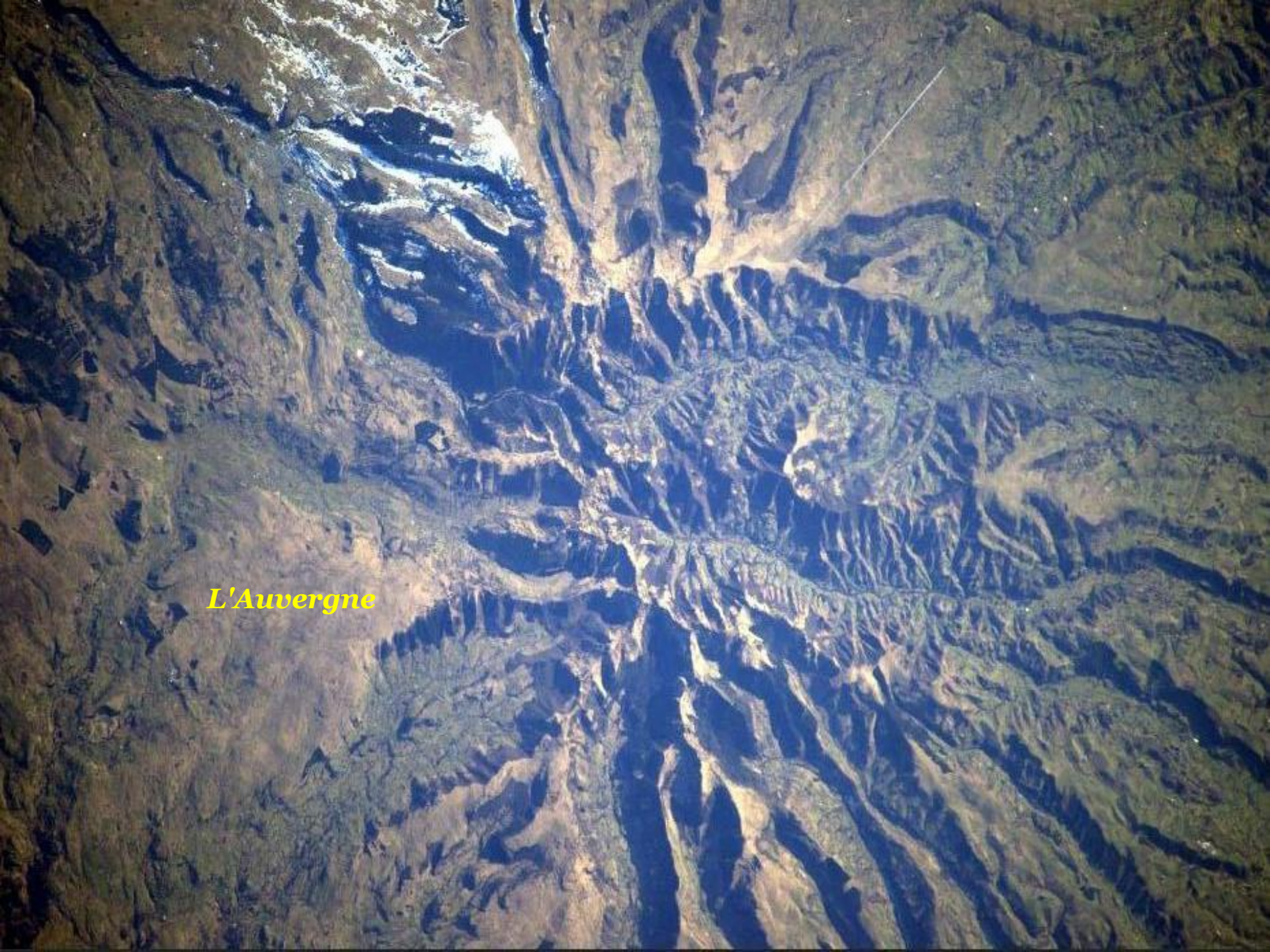
Nantes

Camille Henin 2011



Montpellier





L'Auvergne



Mont Blanc

Les Alpes



Cannes





L'Île Rousse

Hendaye



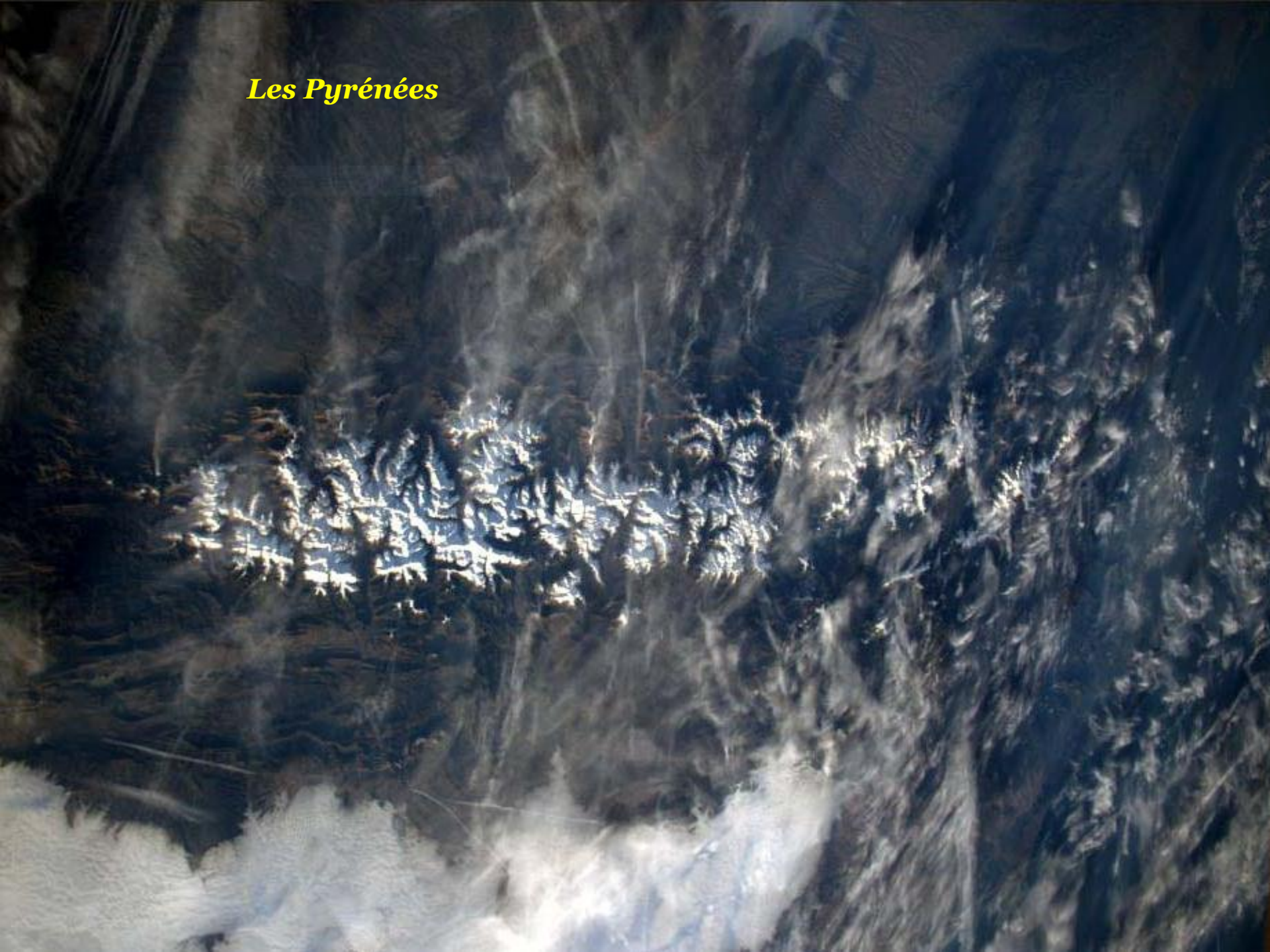


Saint Jean de Luz

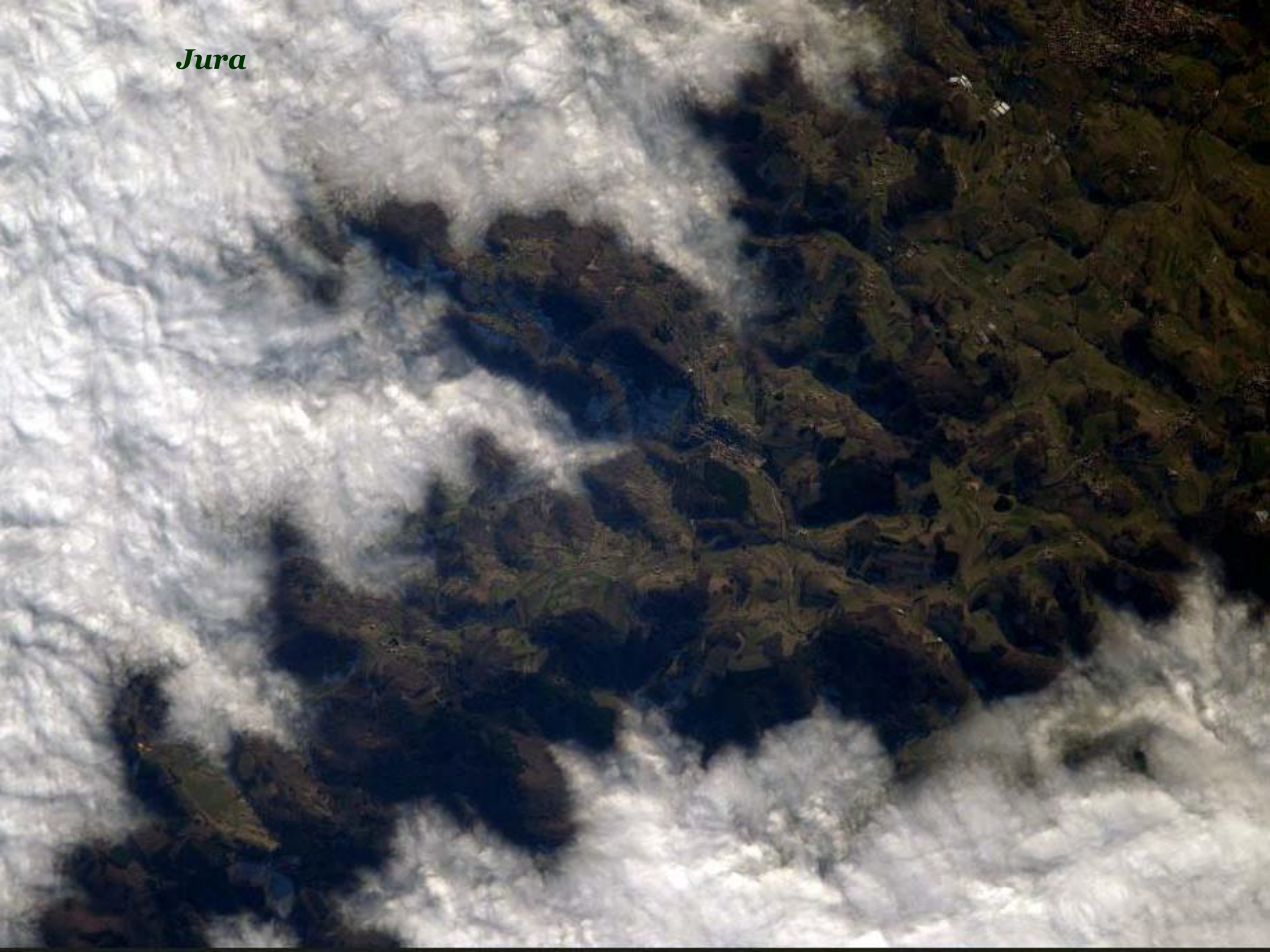


Lac du Mont Cenis

Les Pyrénées



Jura



Capture Plein écran

La Bretagne

An aerial night photograph of Brittany, France, showing a dense network of lights across the region. The lights are concentrated in the central and eastern parts of the peninsula, with a prominent bright cluster in the center. The surrounding areas are dark, with some scattered lights visible along the coastlines and in the interior. The overall scene is a vast expanse of light points against a dark background.



Port Navalo

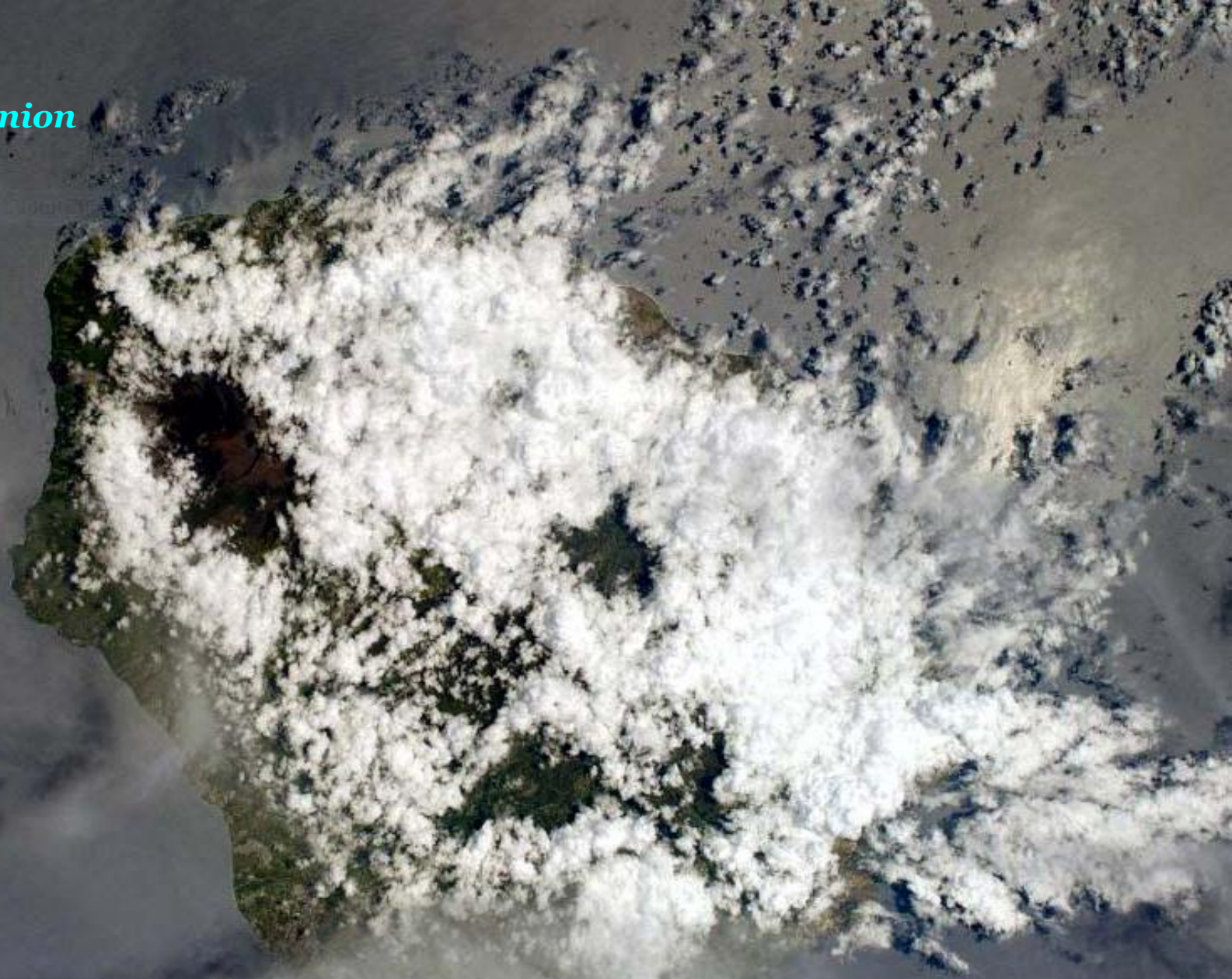


Dieppe

Guadeloupe

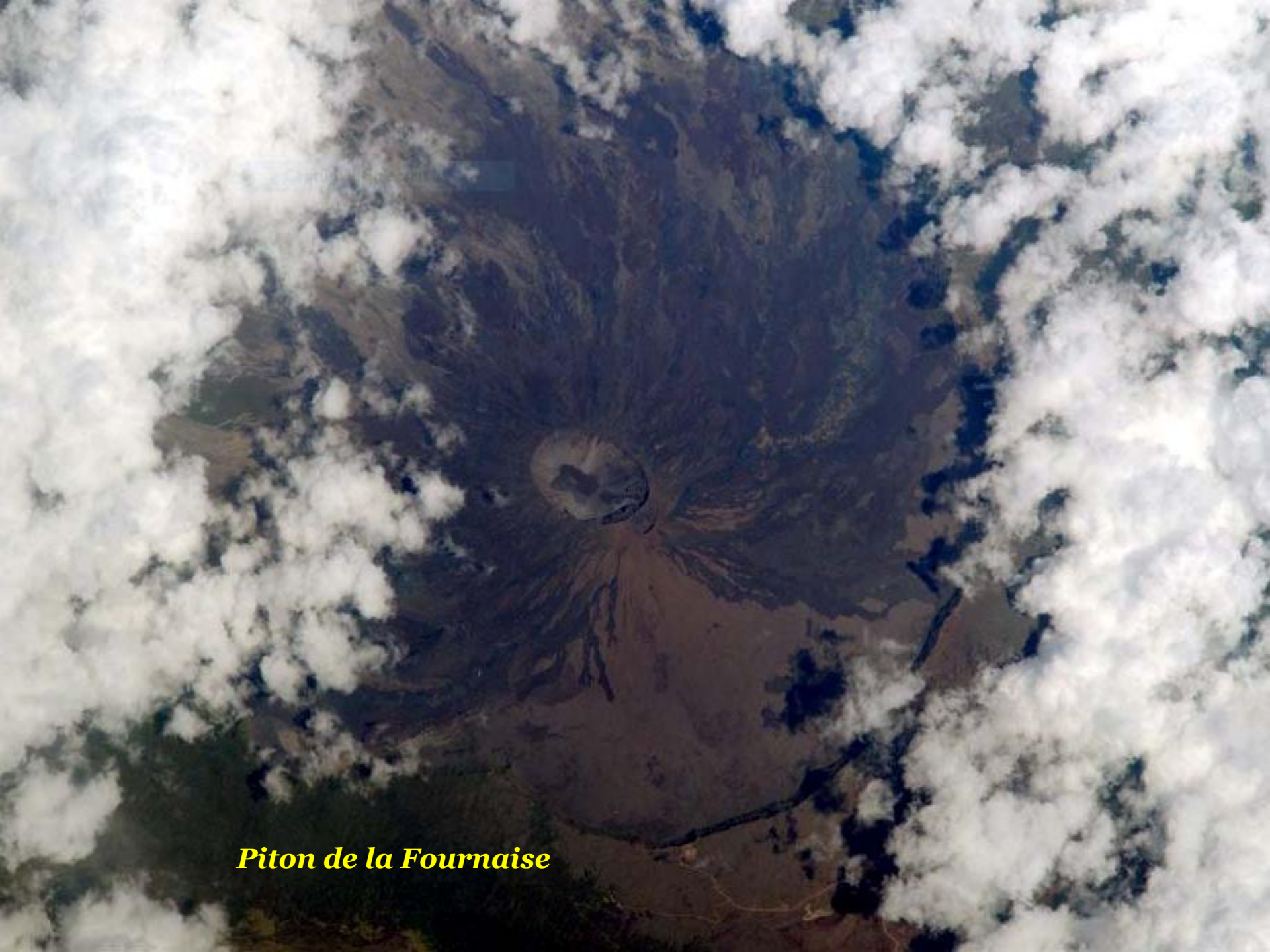


La Réunion





La Réunion

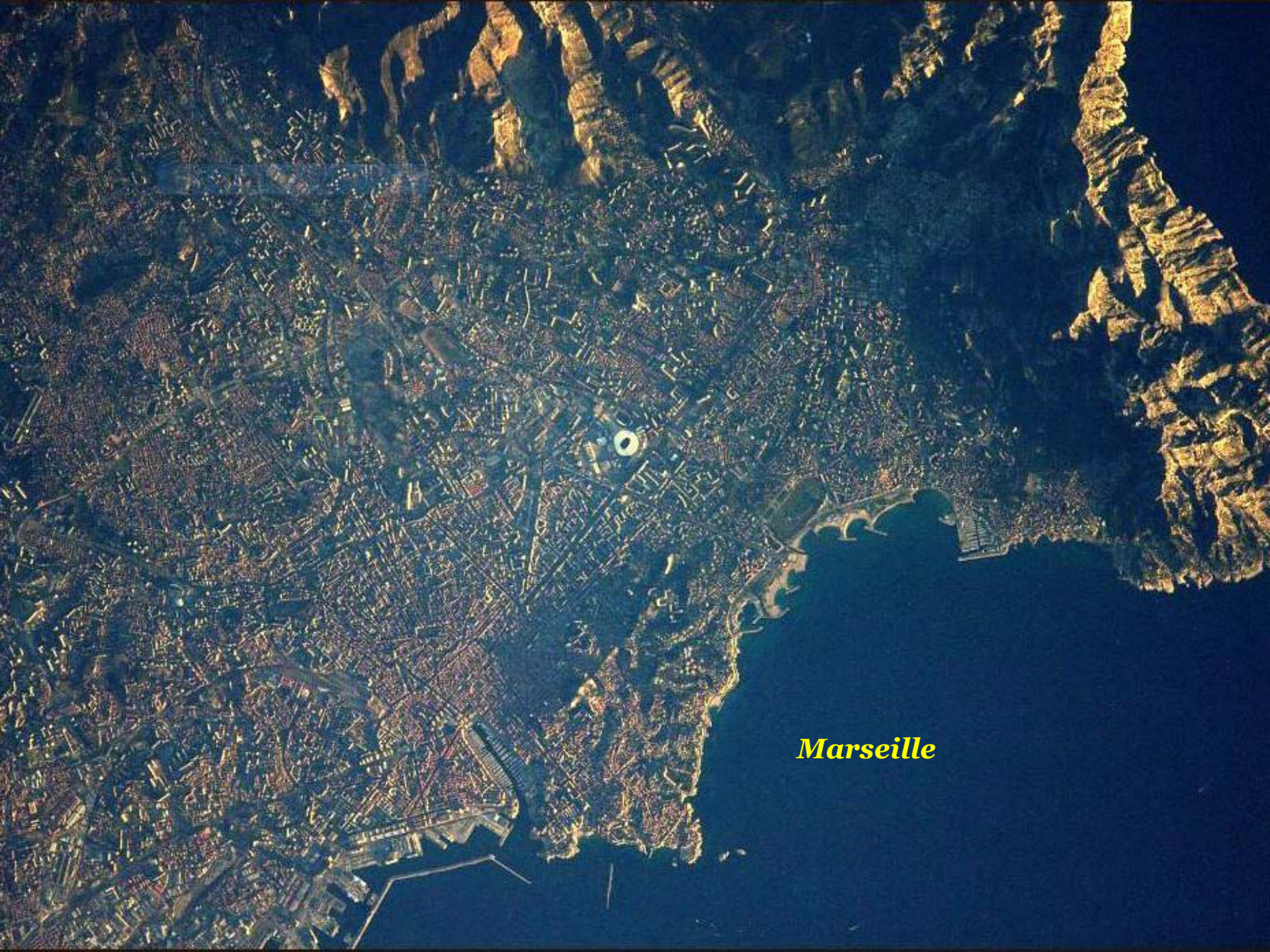


Piton de la Fournaise

Nice

Capture Plein écran





Marseille



La Rochelle

Rome



Venise

Capture Plan 10



Naples



Le Vésuve



Barcelone





Madrid

Lisbonne



Budapest





Campagne Anglaise

Seychelles

Capitane Plain (left)



Berlin





Genève

An aerial photograph of a lush green landscape. A large body of water is visible on the left side, and a river flows through the center of the land. The terrain is covered in dense green vegetation, with some brownish patches indicating different types of land or water. The sky is visible at the top, showing some white clouds.

Et soudain l'horizon s'ouvrit sur le pays de Thomas !

Et oui ! On fait le tour du monde en moins de 80 minutes



Merci Thomas et Internet, J.A. L