

HELP TO SAVE THE PRINCESS

By Artem Morozov

START



YOU CAN SEE A BRIDGE

Go over the bridge

Swim across the river



This is my bridge!
Answer my question to
go further!



go further

THE DRAGON'S QUESTION

*It's very big. It's grey. It has got 4 legs
and a long trunk. It lives in Africa. It
is afraid of mice.*



check

an elephant

go further

YOU CAN SEE A HOUSE

Go into the house

Pass by the house



go further

THE QUESTION OF THE WITCH

It is orange and black. It has got sharp teeth. It likes eating meat. It is dangerous. It looks like a big cat.



check

a tiger

go further

A BIRD HAS A PROBLEM

Help the bird

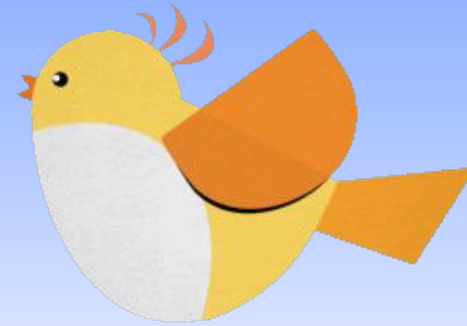
Pass by the tree



go further

WHAT DID THE BIRD GIVE YOU?

It's also a bird, but it can't fly. It lives in water and eats a lot of fish. It likes when it's cold.



check

a penguin

go further

YOU CAN SEE A CAVE

Go into the cave

Hide behind the rocks



I am hungry!

This is my cave! To go further answer my question!

go further

THE BEAR'S QUESTION

It's also a bear, but it's not brown. It's black and white. It likes bamboo. It lives in China. What is this?



check

a panda

go further

YOU CAN SEE A LAKE

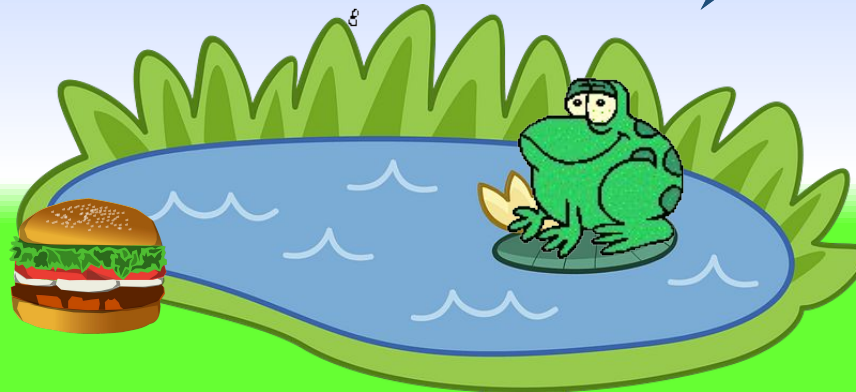
Give it a burger

Talk to the frog



Hello! Can you help
me, please?

I can! But you must
answer my question.



the question

THE FROG'S QUESTION

It's green. It looks like a lizard, but it hasn't got any legs. It has got a long tongue and sharp teeth.

Q



check

a snake

go further

YOU CAN SEE A HORSE

Catch the horse

Give it some sugar



Thank you! I love
Bye-bye! Lose 1 coin!

go further

WHAT DID THE HORSE GIVE YOU?

It lives on a farm. It can be brown, black or white. It's a big animal. It eats grass and gives people milk.



check

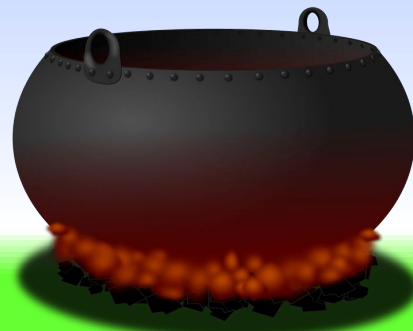
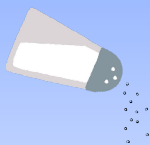
a cow

go further

YOU CAN SEE A CAULDRON

Add some salt

Eat from the cauldron



I like salt! Thank you!
Take 1 coin!

go further

THE TROLL'S QUESTION

It's orange. It has got a long fluffy tail. It eats mice and other small animals. It's very clever and sly.



check

a fox

go further

YOU CAN SEE A FOREST

Hide behind the trees

Pass by the forest



It's my forest! To go further answer my question!

I am hungry!



the question

THE WOLF'S QUESTION

It has got 4 legs and a tail. It looks like me, but it lives in people's houses. It likes eating meat too. It can bark!



check

a dog

go further

YOU CAN SEE A CASTLE

Climb the wall

Go into the castle



the question

THE KNIGHT'S QUESTION

It has got 4 legs and a tail. It has got long hair on its head. People often ride it. It usually lives on a farm. What is it?



check

tea

go further

YOU CAN SEE THE KING

Talk to the king

Give him an apple



I lo

You can marry her. But
you must answer my
question!



the question

THE KING'S QUESTION

It is brown. It has got 2 hands and 2 legs. It can climb very well. It loves bananas. It lives in Africa. What is it?



check

chocolate

leave the castle

WELL DONE!

