



Medical academy named after S.i.
Georgivsky Of vernadsky CFU

**Nosogeography, endemic species,
areas to settle in india**

Student - prajapat Anil Kumar

Group - 192 b

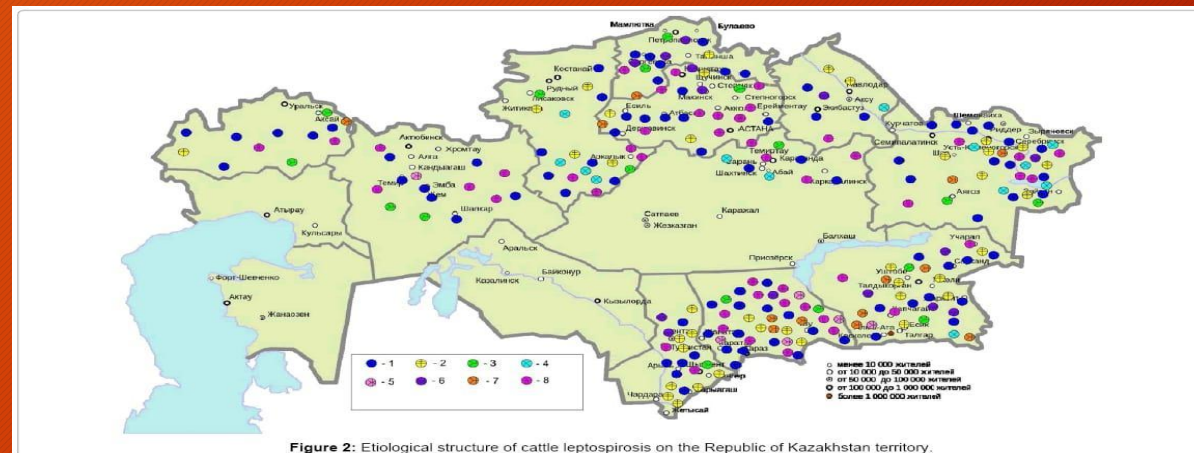
Teacher - phd svetlana smirnova

What is nosogeography ?

- The study of the geographical causes and distribution of diseases.

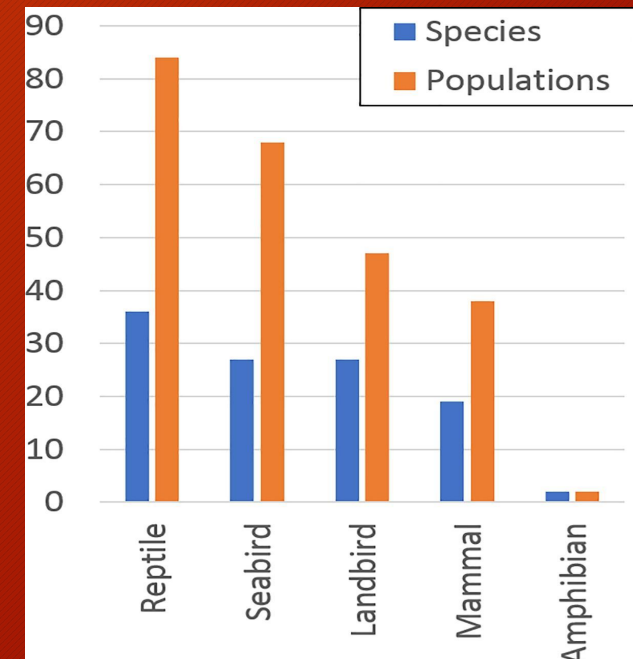
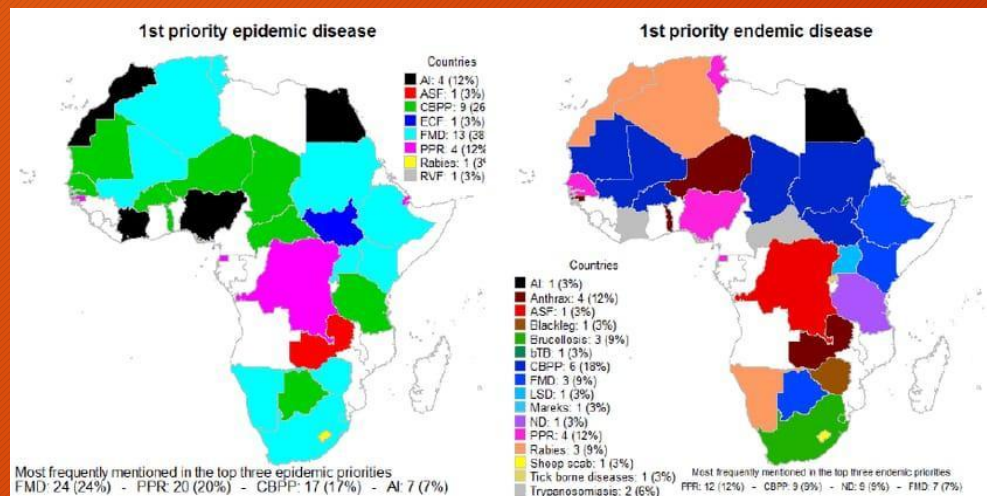
Nosogeography

- **Geographical causes:** Geographic isolation is primary cause for species endemism.
- When an animal or plant species is said to be endemic to a certain location, it means that the said species is unique to that place, appearing nowhere else on the planet. Geographic isolation is a primary cause for species endemism. Changes in the climate due to the atmospheric changes in earth. Changes in the availability of adaptations for species.



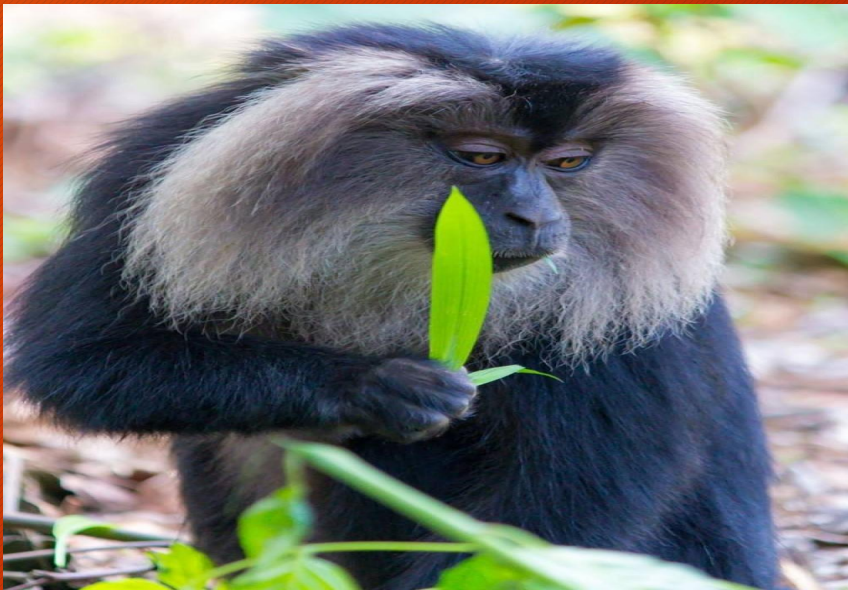
Nosogeography

- **Distribution of disease: Endemic.** A disease that exists in a certain region or population. Epidemic. A widespread occurrence of a disease that attacks many species at the same time and can spread through one or multiple communities.



Endemic species

- Endemic species are plants and animals that exist only in one geographic region. Species can be endemic to large or small areas of the earth: some are endemic to a particular continent, some to part of a continent, and others to a single island.



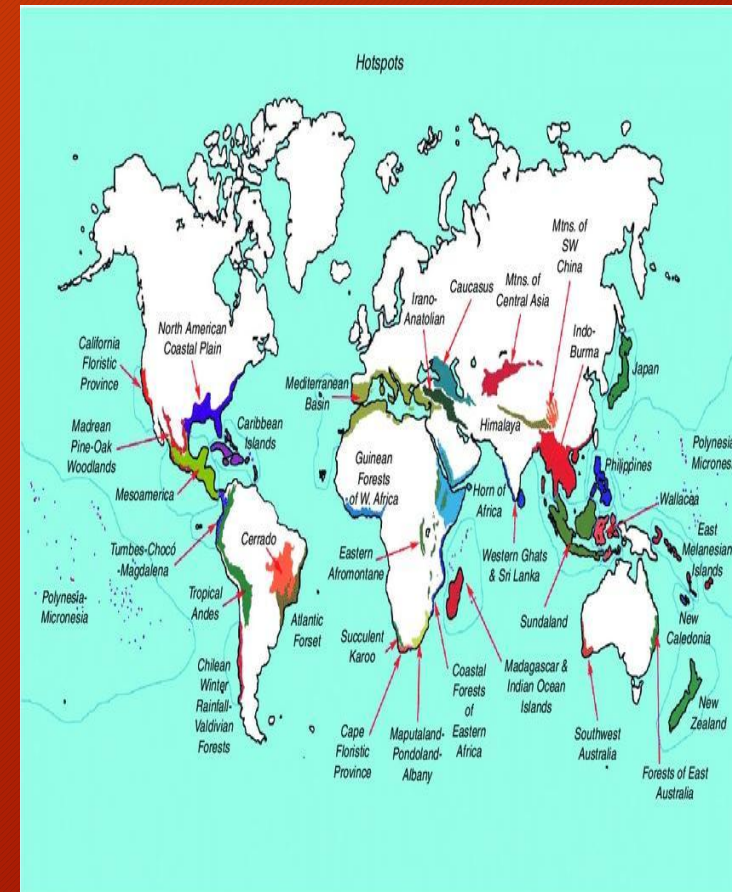
Endemic

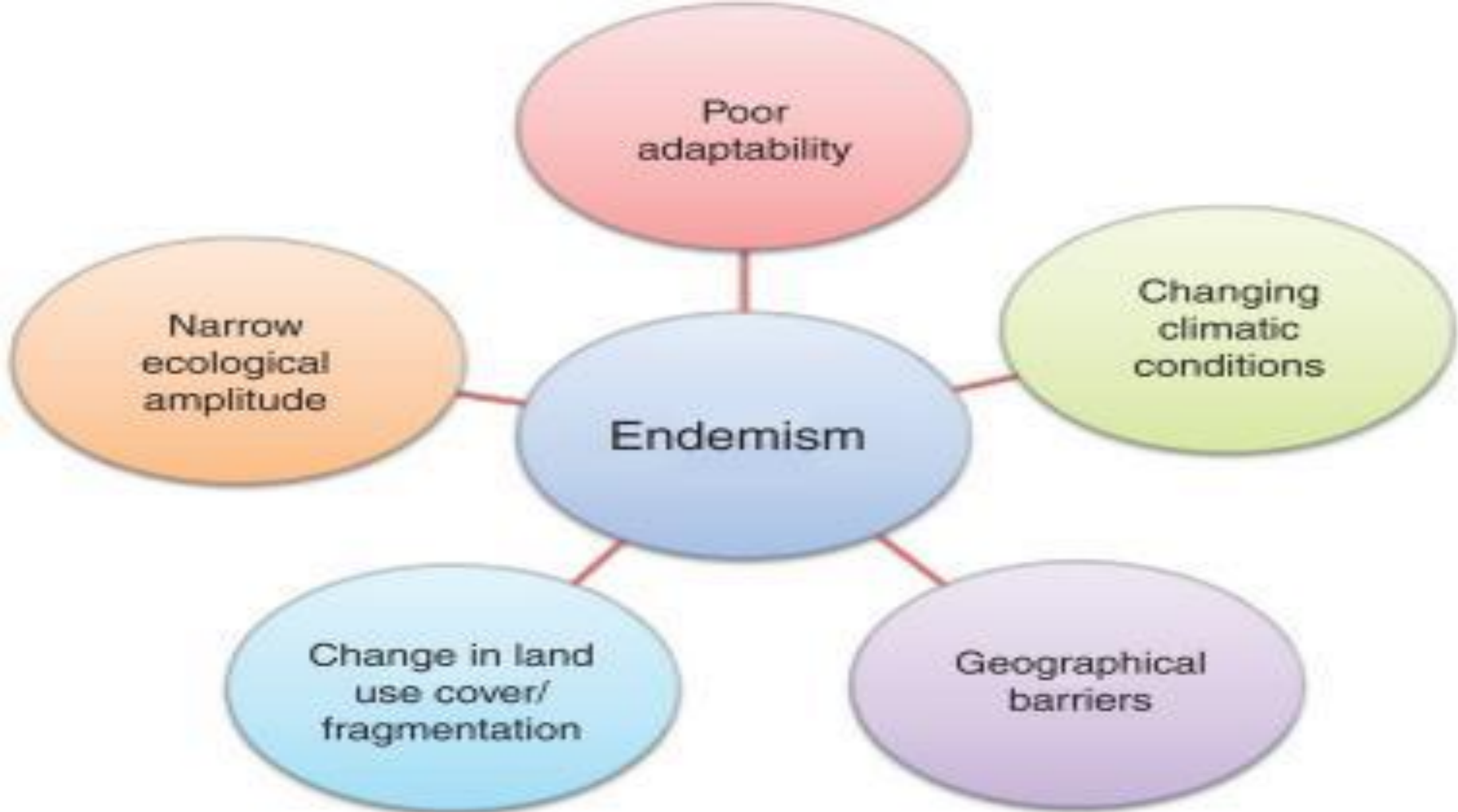
- Endemic species are plants and animals that exist only in one geographic region. Species can be endemic to large or small areas of the earth: some are endemic to a particular continent, some to part of a continent, and others to a single island. For example, kangaroos are originally endemic to Australia and are found nowhere else in the world.



Endemism

- Endemism is the ecological state of a species being unique to a defined geographic location, such as an island, nation, country or other defined zone, or habitat type; organisms that are indigenous to a place are not endemic to it if they are also found elsewhere. For example, the orange-breasted sunbird is exclusively found in the fynbos vegetation zone of southwestern South Africa and the glacier bear is endemic to Southeast Alaska. An alternative term for a species that is endemic is precinctive, which applies to species (and other taxonomic levels) that are restricted to a defined geographical area.





Causes of endemism

- Animals and plants can become endemic in two common ways. Some grow in a particular place, adapting to the local environment and continuing to live within the limits of that environment. This type of endemism is identified as autochthonous or native to the place where it is found.
Changes in the Climatic conditions and geographical barriers
Narrow ecological amplitude and poor adaptability of species.



Some endemic species of India

- Asiatic lion
- Sangai deer
- Lion tailed macaque
- Kashmir stag
- Nilgiri tahr
- Purple frog
- Pygmy hog
- Namdaha flying squirrel
- Anaimalai gliding frog
- Malabar civet
- Nilgiri blue robin
- Bronze back vine snake

Endemic species in India



Tiger



Dhole (Indian wild dog)



Snow leopard is an endangered species found along the Himalayas



Golden Langur



Black Buck



Asiatic lion



Amigos



Indian Rhinoceros

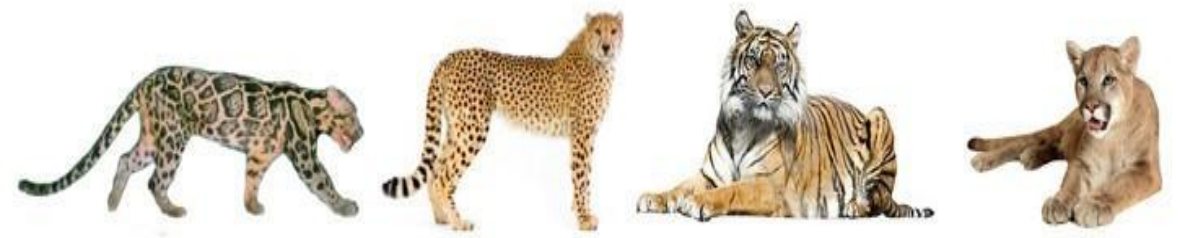
Gibbon



Black Buck



Endemic Animals

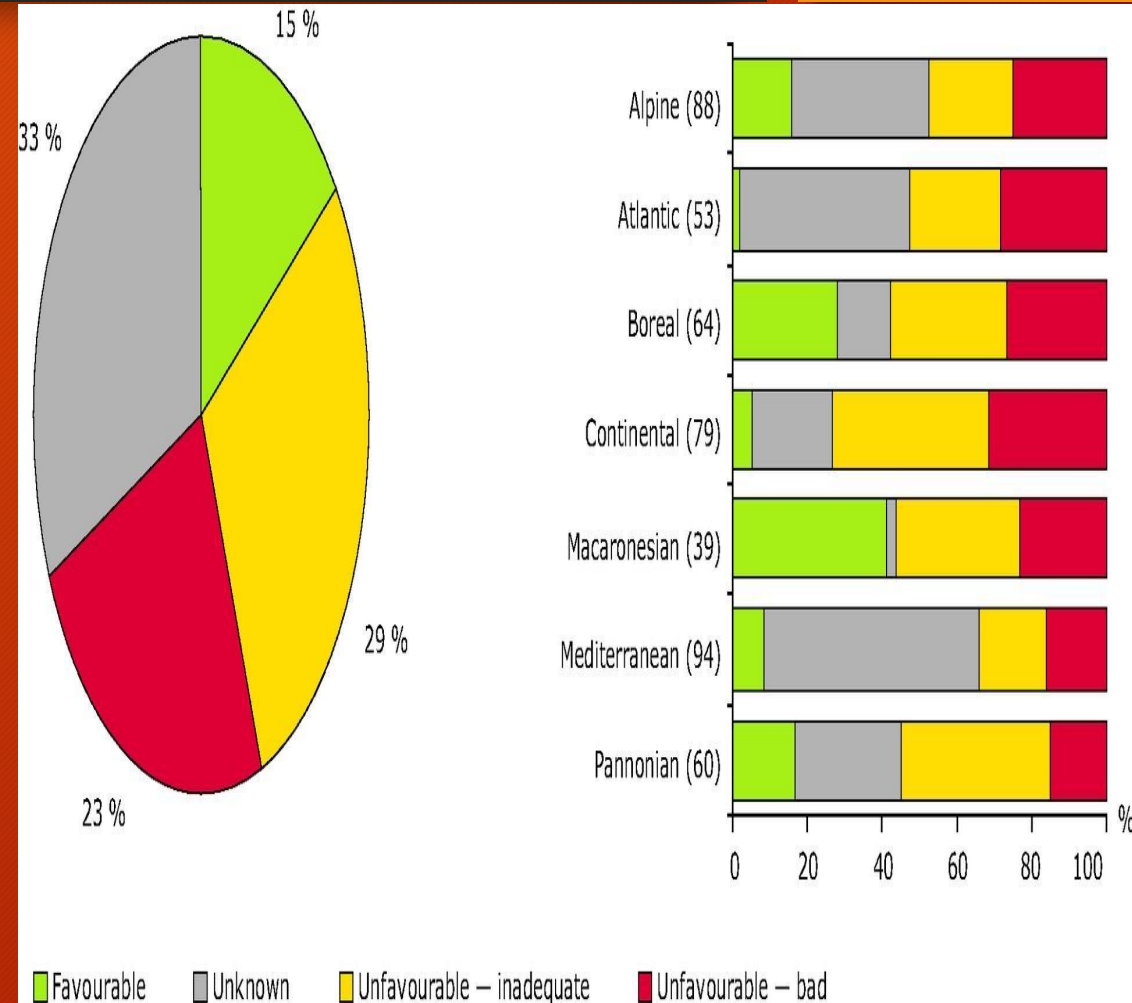


Big Cats: Predators under Threat



Endemic species conversation

- Endemic species are often the most vulnerable to anthropogenic (man-made) threats due to their unique evolutionary history and relatively low population size. So there are many hotspots in india to reserve and protect these species for the future.



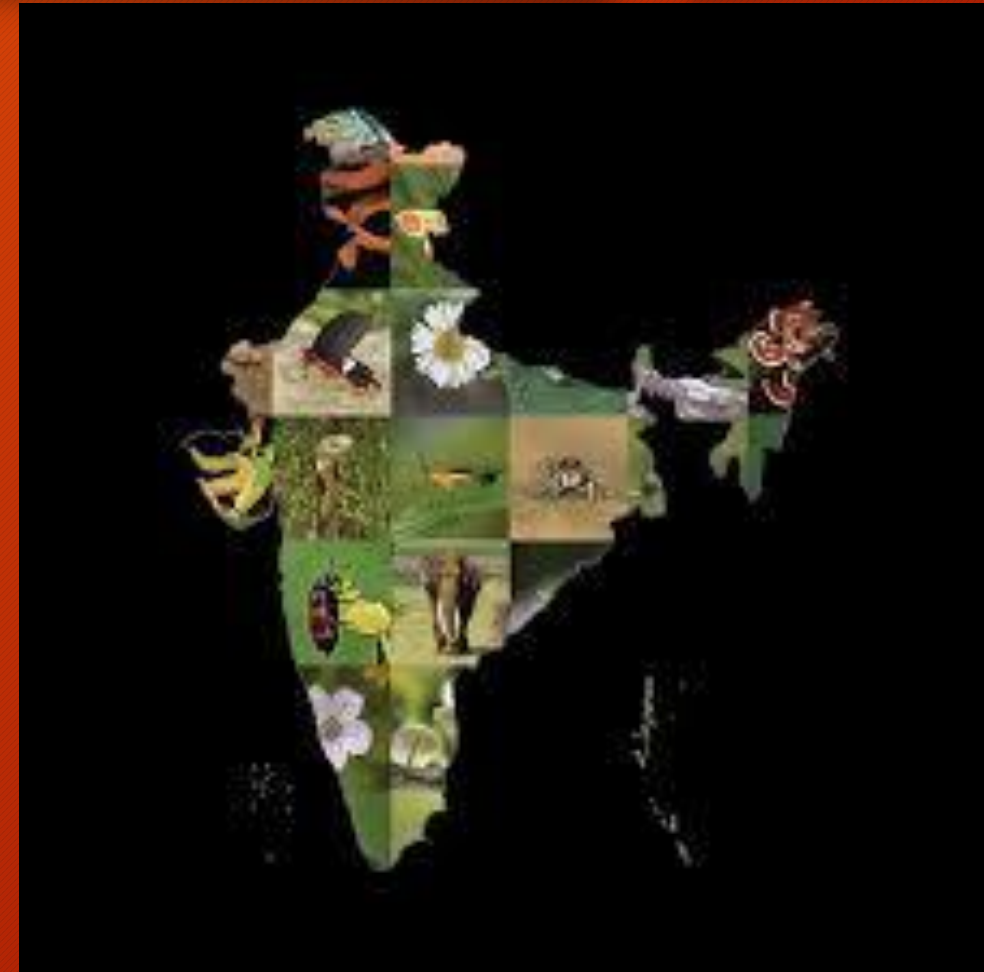
Importance of Endemic species

- An endemic species are important because they are in the habitats restricted to a particular area due to climate change, urban development or other occurrences. Endemic species are often endangered, so it is important to save the species.



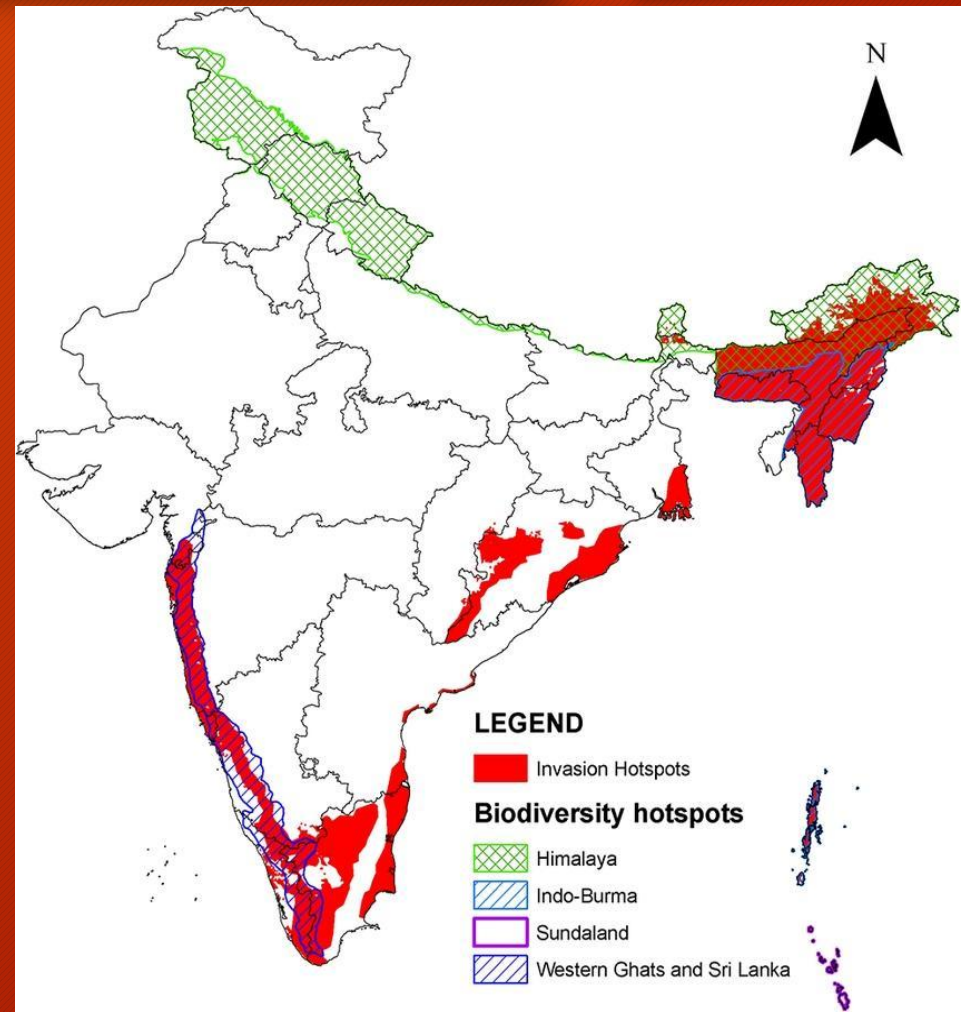
Areas to settle in india: Hotspots

- Biodiversity hotspot is a biogeographic region that is both a significant reservoir of biodiversity and is threatened with destruction. The term biodiversity hotspot specifically refers to 25 biologically rich areas around the world that have lost at least 70 percent of their original habitat.



Hotspots in india

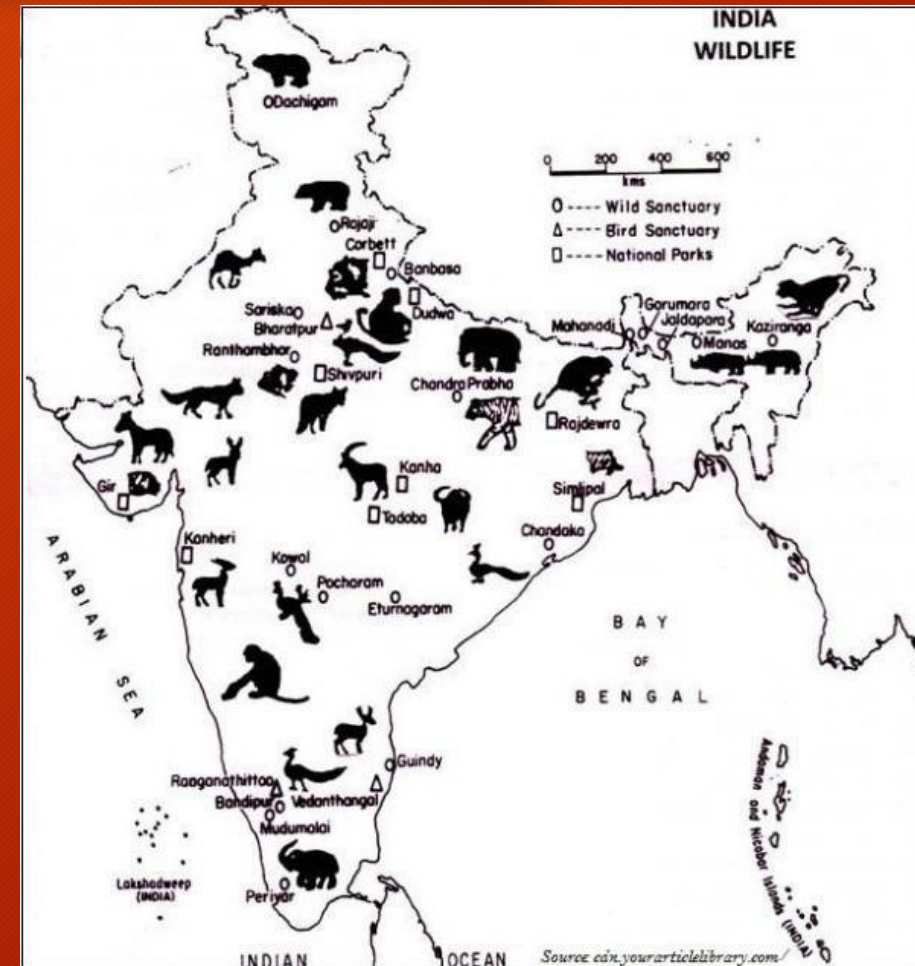
- India hosts 4 biodiversity hotspots: the Himalayas, the Western Ghats, the Indo-Burma region and the Sundaland (Includes Nicobar group of Islands). These hotspots have numerous endemic species. UNESCO recognized one of the global biodiversity hotspots in India, Western Ghats are completely covered by dense Rain forests. These ghats are the homelands to around 77% of the amphibians and 62% of the reptiles.





Importance of biological hotspot

- Biodiversity hotspots are a method to identify regions of the world where attention is needed to address biodiversity loss and to guide investments in conservation. Biodiversity is the major part of life on Earth, faces a crisis of historic proportions. Every minute organism and plant or a big mammal or tree plays an important role in the ecosystem. These biodiversity hotspots are the home to thousands of such endemic organisms, plants, and vegetation. Thus, have a huge impact on the ecosystem and biosphere.

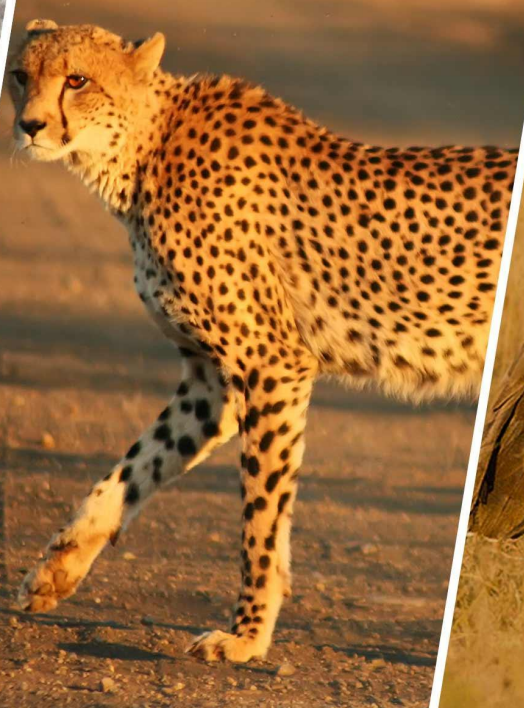
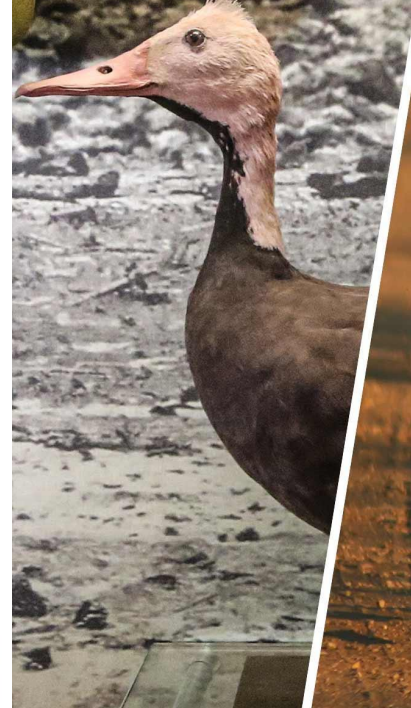


ENDEMIC BIRD DAY

9TH MAY



eBird



Reference

• <https://youtu.be/R0NdFvRqZ10>

<https://youtu.be/Ff3FXDFRsHk>

<https://youtu.be/9kGcyl0C-es>

<https://youtu.be/U49ztYfEn78>



Thank you for your attention

