



RACE TRACK OPERATIONS

Name | DD.MM.YYYY

GATES

Double Gate

Single Gate

Pylons 2

Pylons 1

4 x 1000 KG Flipper Delta

4 x 500 KG Flipper Delta

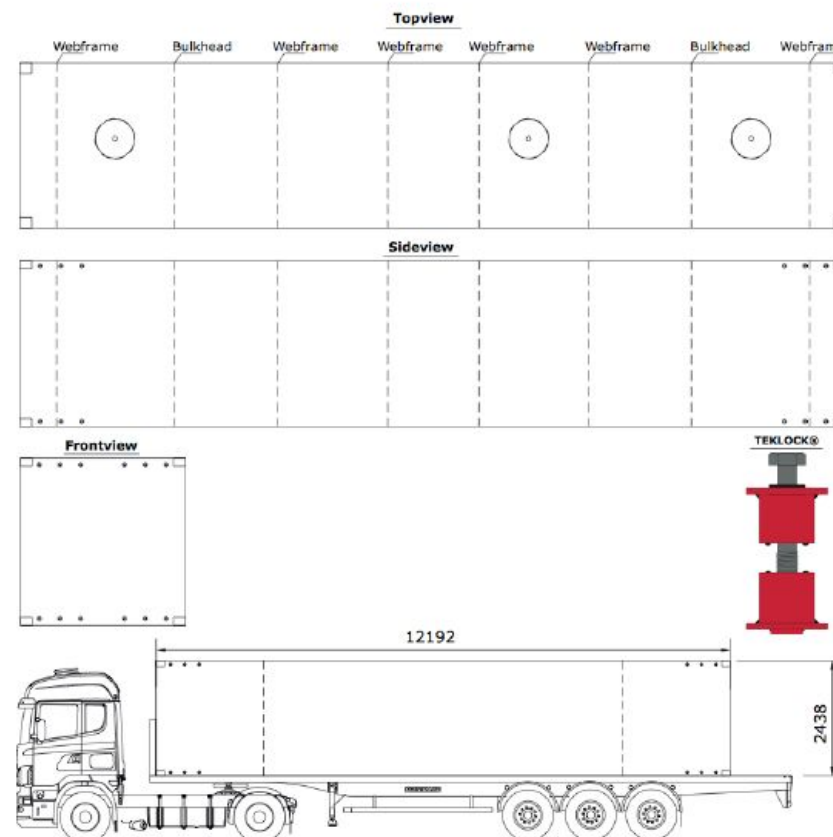


SINGLE GATES

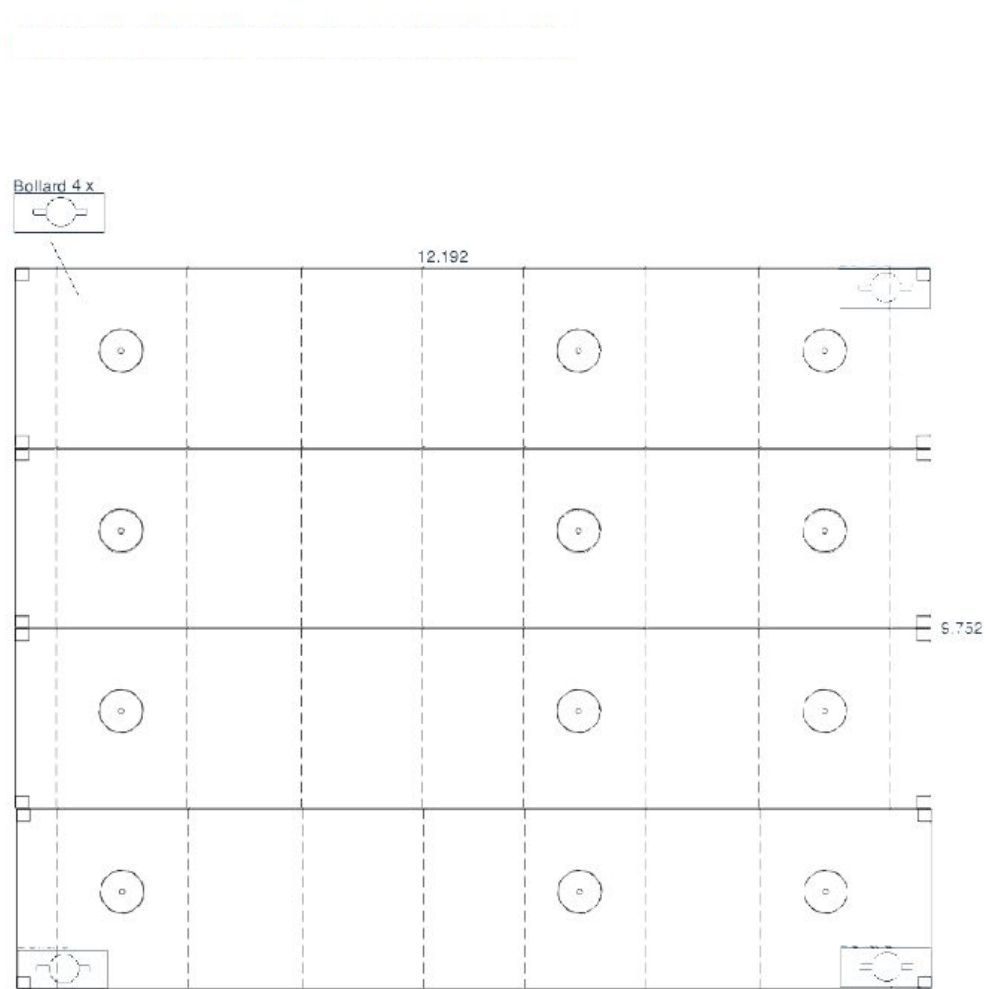
Minimum barge requirements Single Gates
On an open sea location or coastal race location

40 ft Connectable Container Pontoon

Length O.A.	12.192 m.
Width	2.438 m.
Depth	2.438 m.
Class	Bureau VERITAS Inland waters Coastal waters
Draught empty	0,45 m.
Deckload	6 T./ M2.



SINGLE GATES



DOUBLE GATES

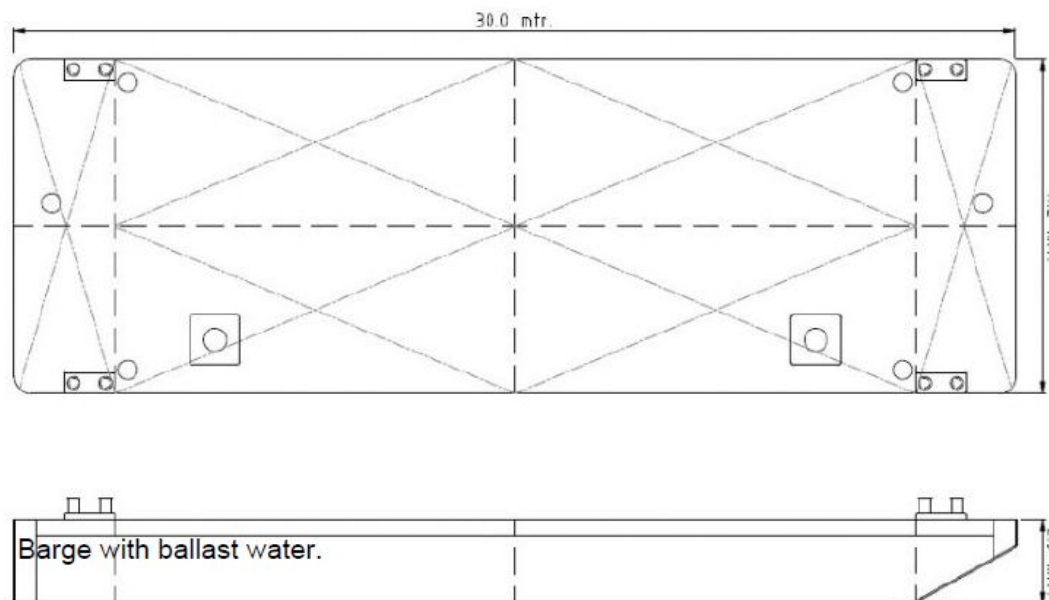
Minimum barge requirements Double Gates
On an open sea location or coastal race location

Flattop Barge

Length O.A.
Width
Depth
Class

Draught empty
Deckload

Min. 26 m. - Max. 40 m.
Min. 8 m. - Max. 11 m.
Min. 2,05 m. - Max 2,5 m.
Bureau VERITAS
Coastal waters
0,5 m.
5 T./ M2.



DOUBLE GATES



TUG BOAT

Minimum requirements Tug Boat.

The tugboat we will use to bring the Airgate in position after the placement of 2 anchors.
We need the Tug the whole period due to safety. In case of bad weather we need to remove the track.
The tug should be an offshore tug but not too big, It should be able to push the barge in position.

L.O.A.
Bollard pull
Class
Push bow

20 m. – 30 m.
up to 10 T.
B.V. Coastal waters
Yes



SMALL BOATS

Requirements Small boats

The small boats have to be Ridged inflatable boats
We do use them as Airgate boat, Rescue boat or Shuttle

Minimum length
Minimum horsepower
Driver
Boat

8 Meters
175 HP
English speaking
needs to be in good condition.



ANCHOR HANDLING VESSEL

Requirements Anchor Handling Vessel

The anchor handling vessel needs to be an MPV
Including crane and min. 1 anchor handling winch.

Type of vessel

Class

Trading area

Min. Dimensions

Total output main engines

Bow thruster

Bollard pull approximately

Free running speed

Towing/anchor handling winch

Hydraulic crane

Multi purpose vessel (MPV)

Bureau Veritas

Coastal navigation

25,0 x 9,9 x 3,5 m

1566 kW

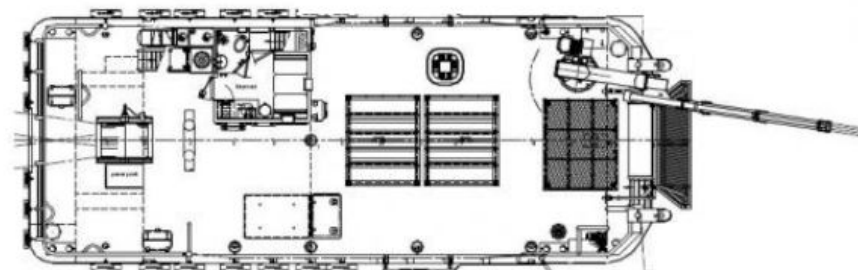
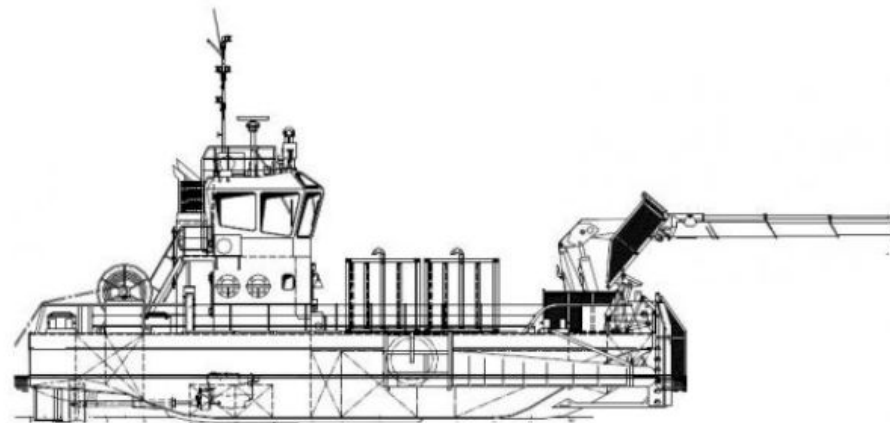
358 kW, 360 degrees

28 ton

10 knots

2x 45 ton CT

200 tm.



ANCHOR HANDLING VESSEL



BARGES

As there is no final track at the moment we cannot make an accurate list on how much barges we require. We estimate the following;

Required Barges Red Bull Air Race

Double Gates	6 pcs.	min. 18 days on location	TBD.
Single gate	3 pcs.	min. 18 days on location	TBD.
Work-barge (same as double gate)	1 pcs.	min. 18 days on location	TBD.

Required Vessels Red Bull Air Race

Tugboat	1 pc.	min. 16 days on location	TBD.
MPV	1 pc.	min. 18 days on location	TBD.

Required Anchors Red Bull Air Race

Not Required

Required small Boats Red Bull Air Race

Ridgit inflatable boats	3 pcs.	min. 13 days on location	TBD.
Shuttle boats	2 pc.	min. 6 days on location	TBD.

ADDITIONAL REQUIREMENTS

Additional requirements Red Bull Air Race

1. Shelter area during whole period in case of bad weather.
2. Transport of equipment to and back.
3. Shipyard or area to moor the barges and vessels during setup and overnight.
4. 24 hour standby during whole period from the MPV and Tugboat. (Weather and race track repositioning)